



Latvian Geospatial
Information Agency

Analyses and ideas of Struve Geodetic Arc points landscape in Latvia

Coordinating Committee Meeting of the Struve Geodetic Arc- Tallinn, Estonia 7 of
September year 2016

Head of Geodetic Division
Ivars Liepins



Latvian Geospatial
Information Agency

Contents

*All pictures by Landscape Architecture
study program in Faculty of Environment
and civil Engineering at Latvia University
of Agriculture*



Latvian Geospatial
Information Agency

In year 2015 Latvian Geospatial information agency finished inspection of all 16 Struve Arc Points in Latvia. After that Agency began cooperation with Landscape Architecture study program in Faculty of Environment and civil Engineering at Latvia University of Agriculture.

Aim was to bring landscape architecture knowledge and Struve Geodetic Arc.

5 groups of 5 student in each two weeks were working and creating ideas and concepts of landscape architecture for 16 sites.

Using Agency inspection information and other information about Struve Geodetic Arc



Latvian Geospatial
Information Agency

I group

Design concept is triangle which is used in all elements and can be utilize in each municipalities

2 catalogues.

Classificatory of point placement in landscape (practical information about point localization in field and character of them)

Classificatory of environment objects and utilities elements (guidelines for commodity of place)



Latvian Geospatial
Information Agency

Attēls



Ortofoto



Piezīmes

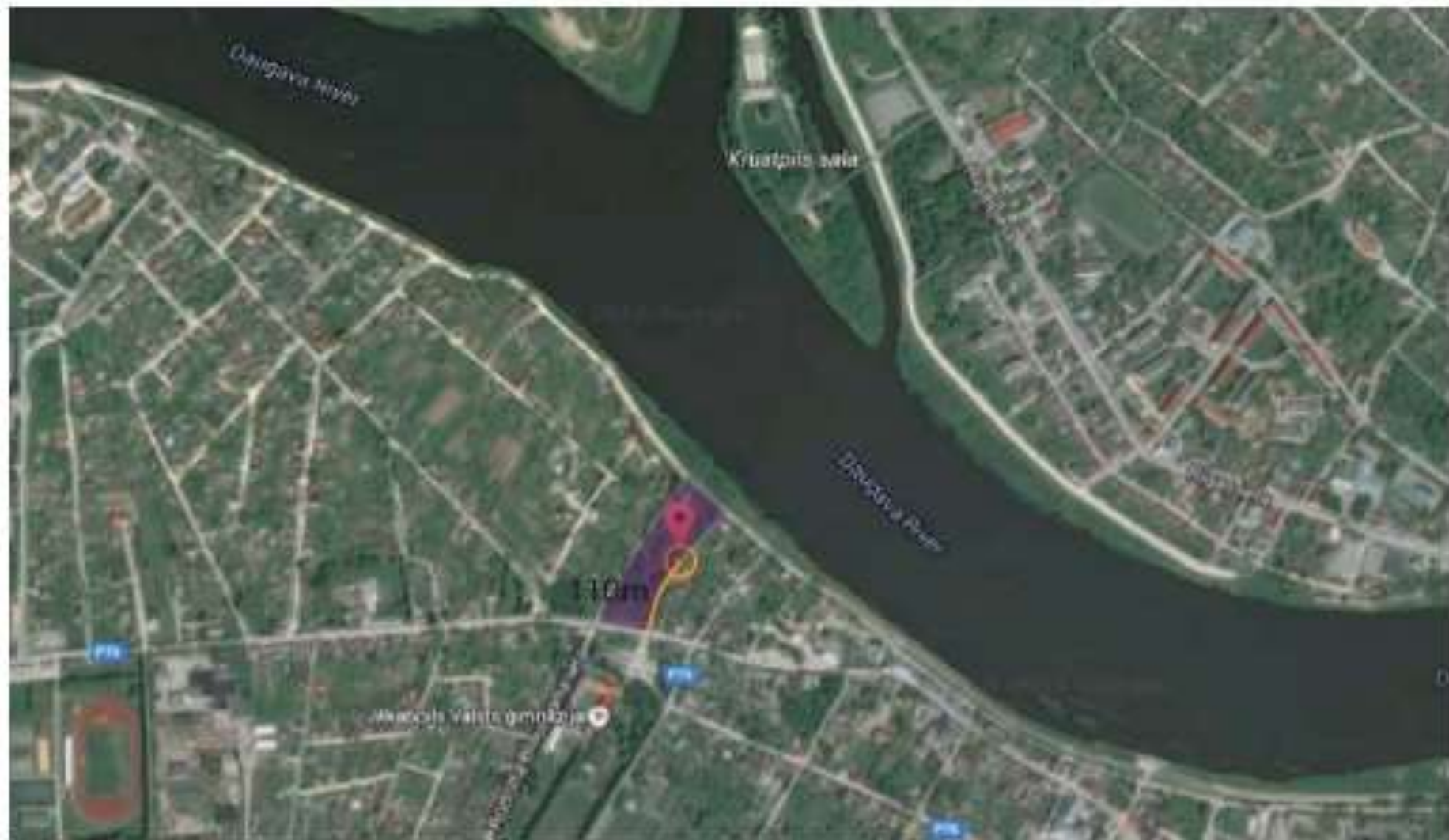
Nebija iespējams ienest tornī leņķu mērītāju ienest tornī, tāpēc novērojumi tikai veikti zem teltīm blakus baznīcai, instrumenta pozīcija tika saistīta ar torņa centru. Instrumentam uz zemes bija labāks pamats, nekā tornī iespējams. Torņa augstums no dažādiem datiem 24-28 metri.



pa pļavas ceļu aptuveni 500 metri uz paugura virsotni.

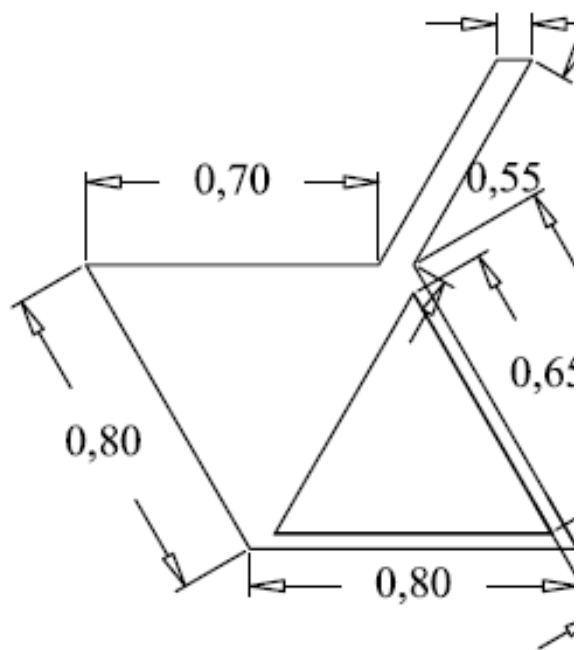
Signāls atrodas ar Palzmar (Palsmane) mācītāju (draudzi) saistītā kalnā aptuveni vienu versti no mācītāja dzīvokļa. Tas ir pirmais sava veida, bet ļoti liela izmēra.

JĒKABPILS



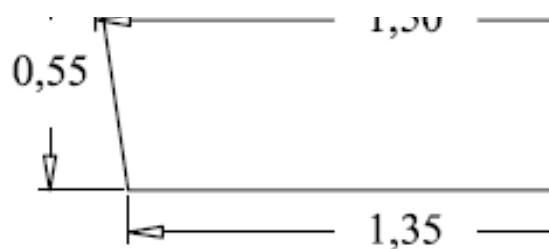
— GRANTS CEĻA SEGUMS
PARKA TERITORĪJA

PUNKTS ATRODAS JĒKABPILS PILSĒTAS
TERITORĪJA



● Paredzētie elementi un objekti

● Objekti, kas izvietojami pēc vajadzības



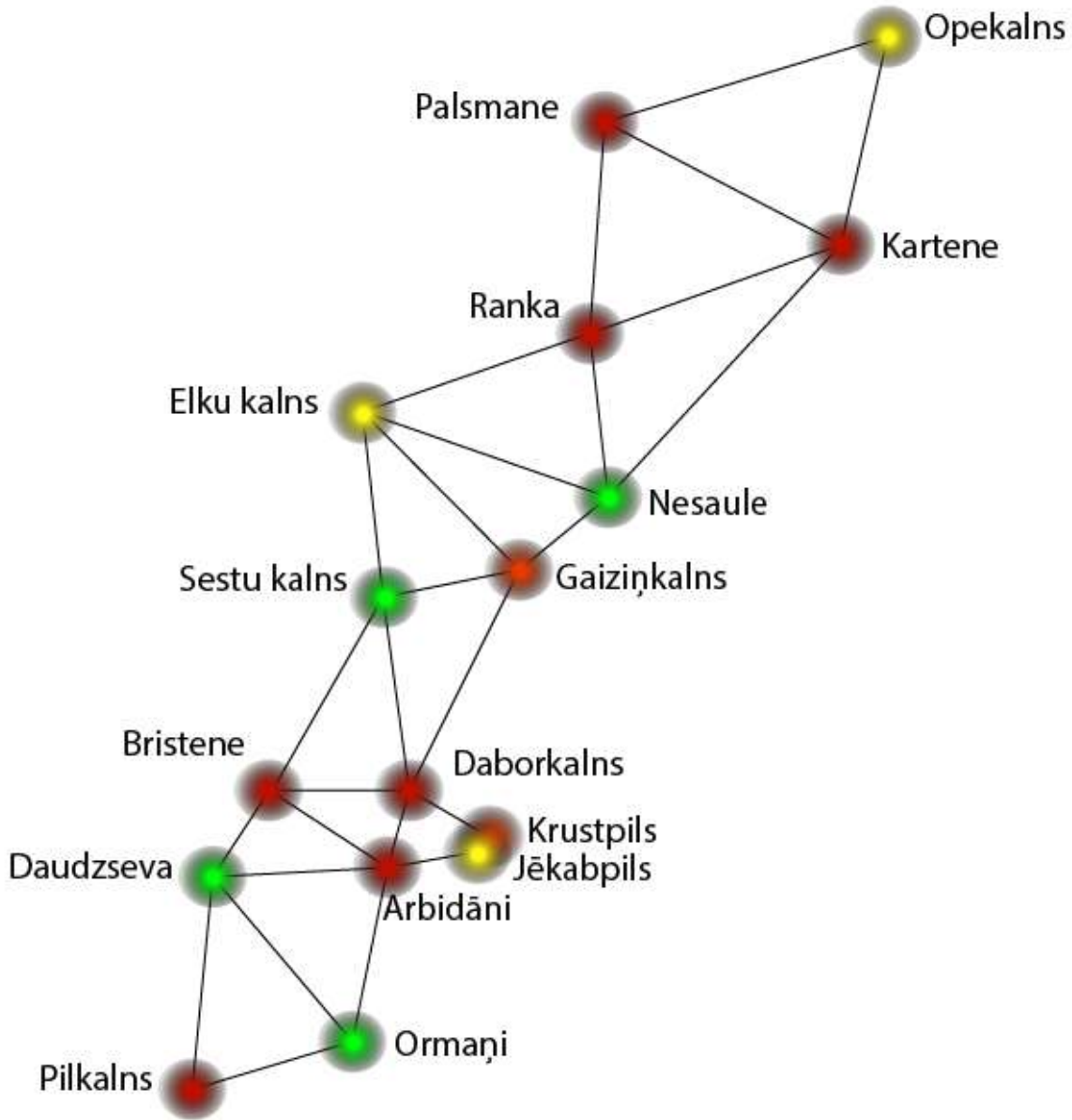
	STR-A	STR-R	STR-S1	STR-S2	STR-P	STR-U	STR-O	STR-I	STR-N1	STR-N2	STR-W	STR-T	STR-L
OPEKALS	●	●			●	●		●				●	●
PALSMANE	●	●	●			●	●	●	●		●	●	●
KĀRTENE	●	●			●	●		●		●	●	●	●
RANKA	●	●		●	●	●		●	●		●	●	●
ELKU KALNS		●				●		●				●	●
NESAULE	●	●	●		●	●	●	●		●	●	●	●
GAIZIŅKALNS	●			●		●	●	●			●	●	●
SESTU KALNS	●	●			●	●		●	●		●	●	●
DABORKALNS	●	●	●			●	●	●			●	●	●
BRISTENE	●	●			●	●		●			●	●	●
KRUSTPILS	●	●											
JĒKABPILS	●		●			●	●						
ARBIDĀNI	●	●			●	●		●		●	●	●	●
DAUDZSEVA	●	●			●	●		●			●	●	●
ORMAŅI	●	●	●			●		●			●	●	●
PILSKALNS	●	●			●	●	●	●		●	●	●	●



Latvian Geospatial
Information Agency

II group

Design concept three activities see, guess and imprint



guess and imprint



SEE



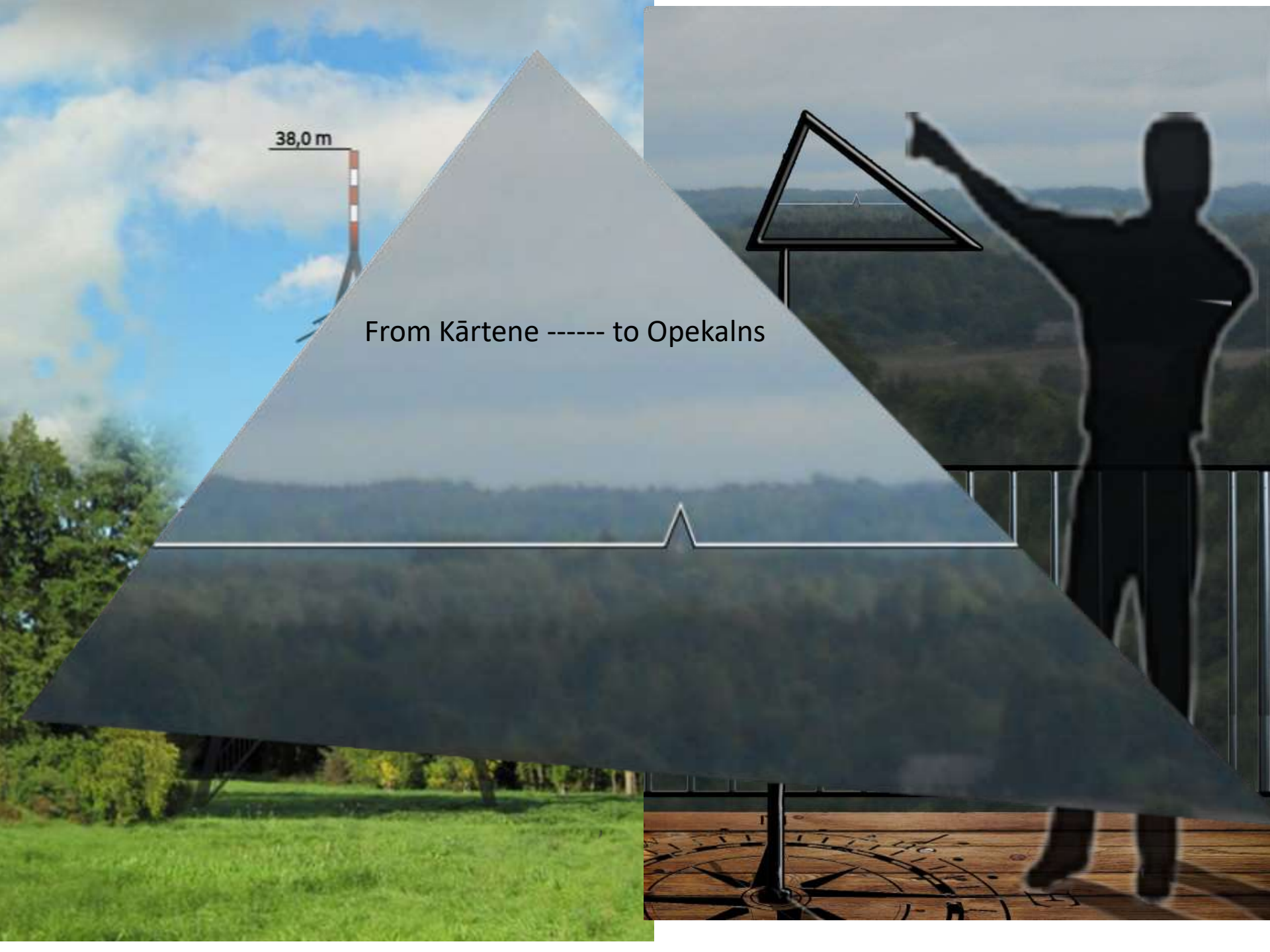
GUESS



IMPRINT

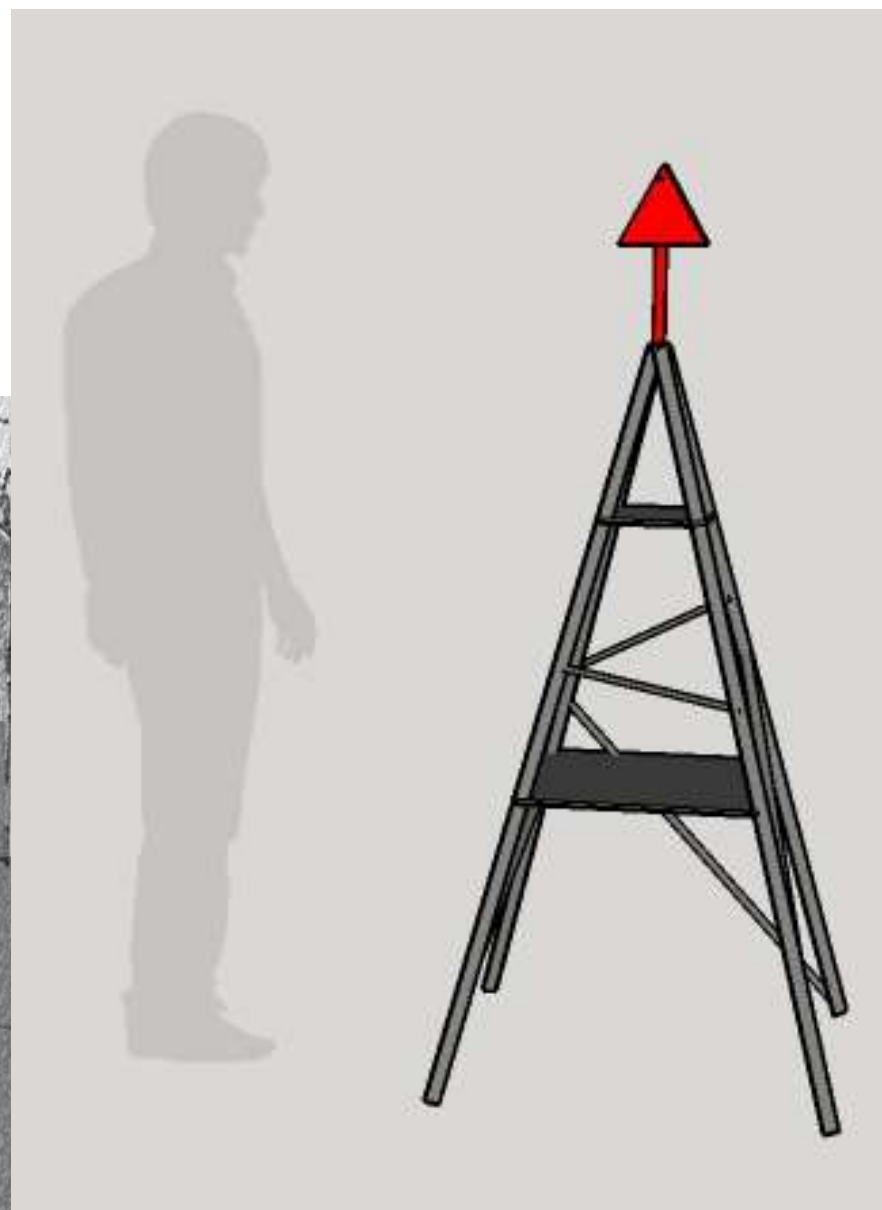
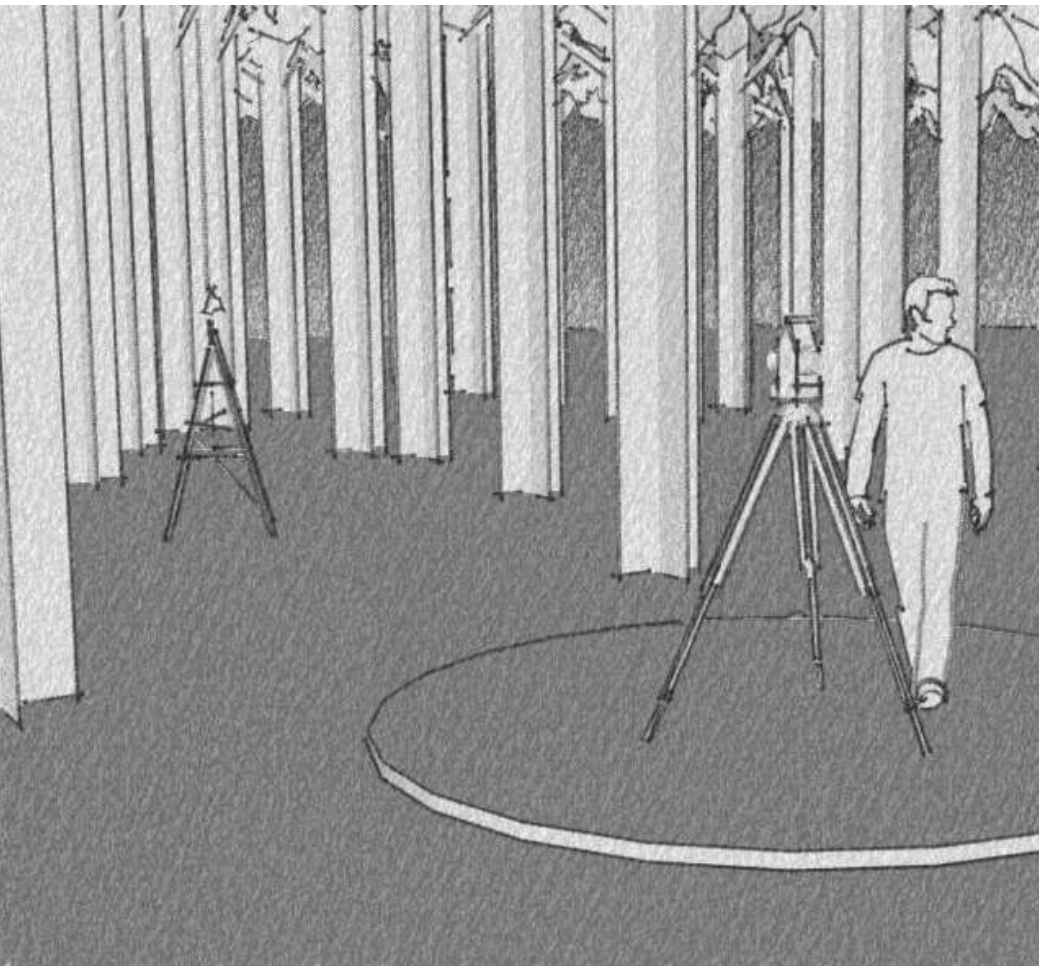
38,0 m

From Kārtene ----- to Opekālns





Latvian Geospatial
Information Agency



10 50
km



2,5 m

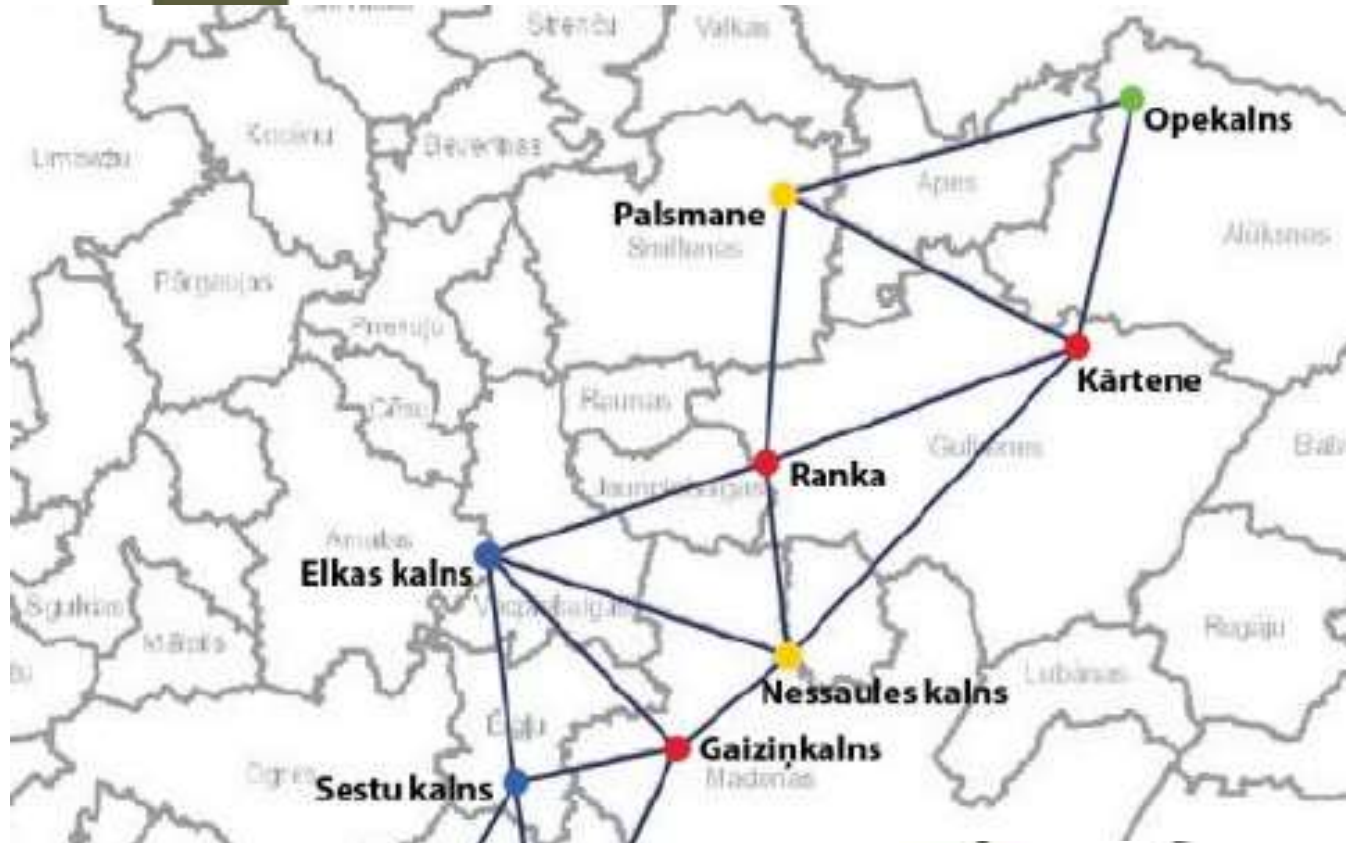
Pīkalns
390 m



Latvian Geospatial
Information Agency

III group

Design concept information near historical monuments,
places for view towers, information signs near places
with free access and natural territory with information



- Informatīvas norādes pie kultūrvēsturiskiem pieminekļiem
- Piedāvātās vietas skatu torņu izbūvei
- Informatīvas norādes pie vieglas piekļuves vietām
- Dabiskas teritorijas ar informatīvām norādēm ar attālumu līdz punktam





A u t o r a v e i d o t a v i z u a



Latvian Geospatial
Information Agency

IV group

Design concept different construction of information stands and pathway. Some places with view towers.

● 2.5 m augsta metāla konstrukcija, bruģēts laukums un soliņi

● 2.5 m augsta metāla konstrukcija, grants iesegums, soliņi

● 1, 5 m augsta metāla konstrukcija, zemes taciņa

● Skatu tornis, informācijas stendi, soliņi



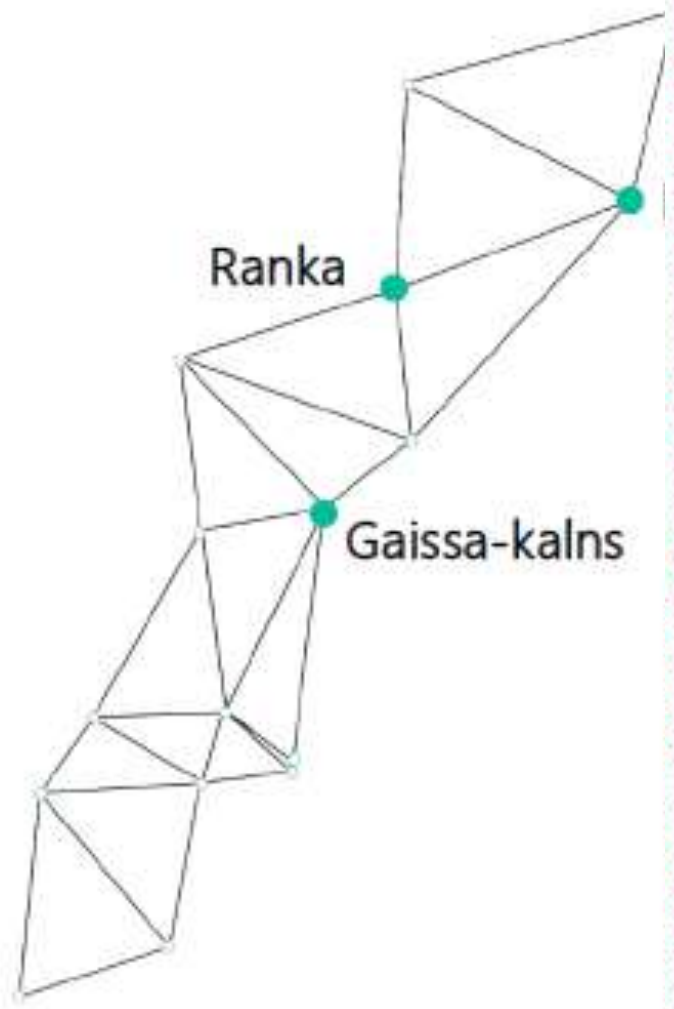




Latvian Geospatial
Information Agency

V group

Design concept Struve game.







Latvian Geospatial
Information Agency

Tānan!

Kūsimused!