



# INSPIRE in Member States: obligation or opportunity?

Integration of location in e-Gov processes

Danny Vandembroucke

# Outline

- INSPIRE in the Member States: where are we ?
- INSPIRE as an obligation or an opportunity ?
- Uptake of INSPIRE in work processes
- The (changed) role of NMCAAs

# Outline

- **INSPIRE in the Member States: where are we ?**
- INSPIRE as an obligation or an opportunity ?
- Uptake of INSPIRE in work processes
- The (changed) role of NMCAAs

# INSPIRE in the Member States



INSPIRE GEOPORTAL

Enhancing access to European spatial data

86.222 spatial data sets  
1.313 data series  
44.108 network services

EUROPEAN COMMISSION > INSPIRE > INSPIRE GEOPORTAL

What's new

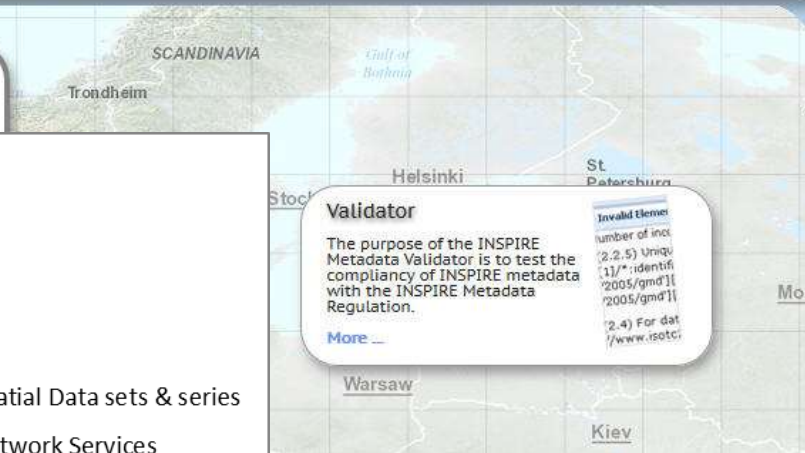
## Welcome to the INSPIRE geoportal

The INSPIRE Directive requires the Commission to establish a community geo-portal and the Member States shall provide access to their infrastructures through the geo-portal as well as through any access points they themselves decide to operate.

[More...](#)

## Discovery / Viewer

Search, discover and

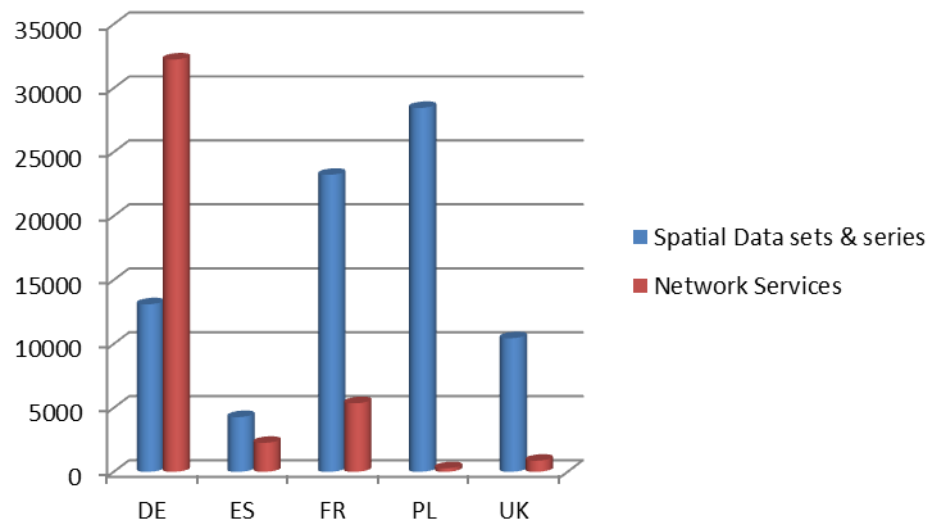


### Validator

The purpose of the INSPIRE Metadata Validator is to test the compliance of INSPIRE metadata with the INSPIRE Metadata Regulation.

[More ...](#)

```
Invalid element  
number of incl  
(2.2.5) Uniqu  
(1/*:identifi  
2005/gmd"||  
2005/gmd"||  
(2.4) For dat  
/www.iso.c
```



KU LEUVEN

SPATIAL APPLICATIONS DIVISION

# INSPIRE in the Member States

- And we know there is even more ...

Layers catalogue

Group

Art

Royal Belgian Institute of Natural Sciences

You may:

- ▶  Fisheries
- ▶  Nature conservation (MPA)
- ▼  Energy, cables and pipelines

Area for renewable energy (wind farms)

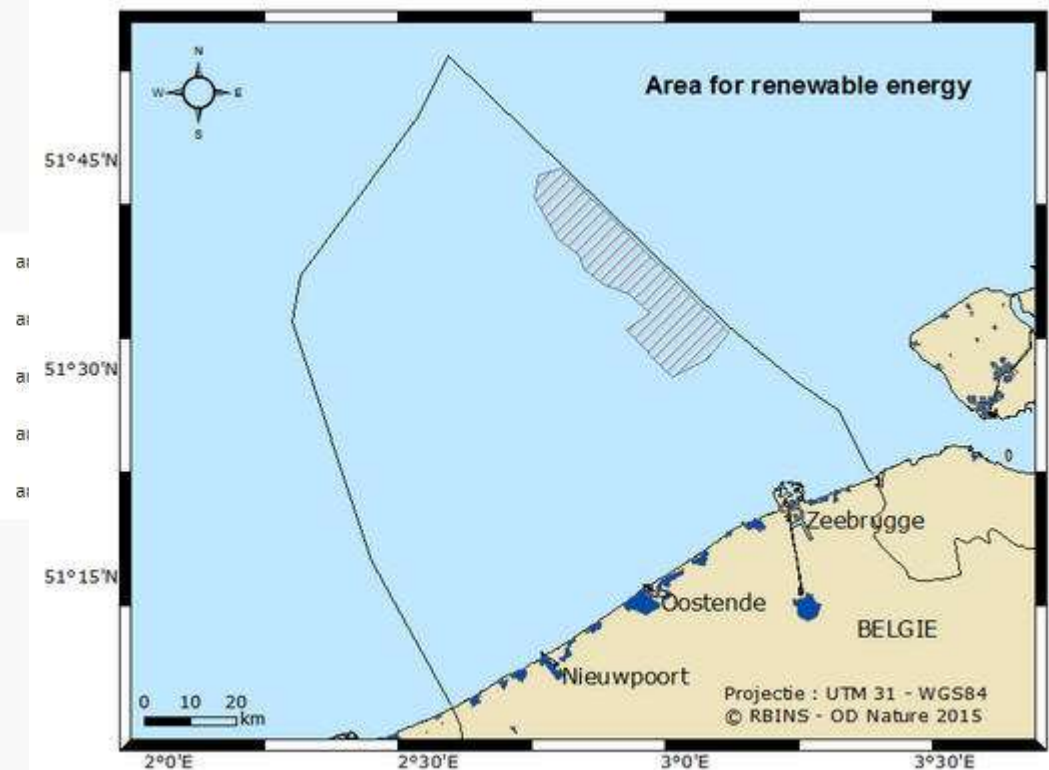
Plug at sea

Energy atoll 1

Energy atoll 2

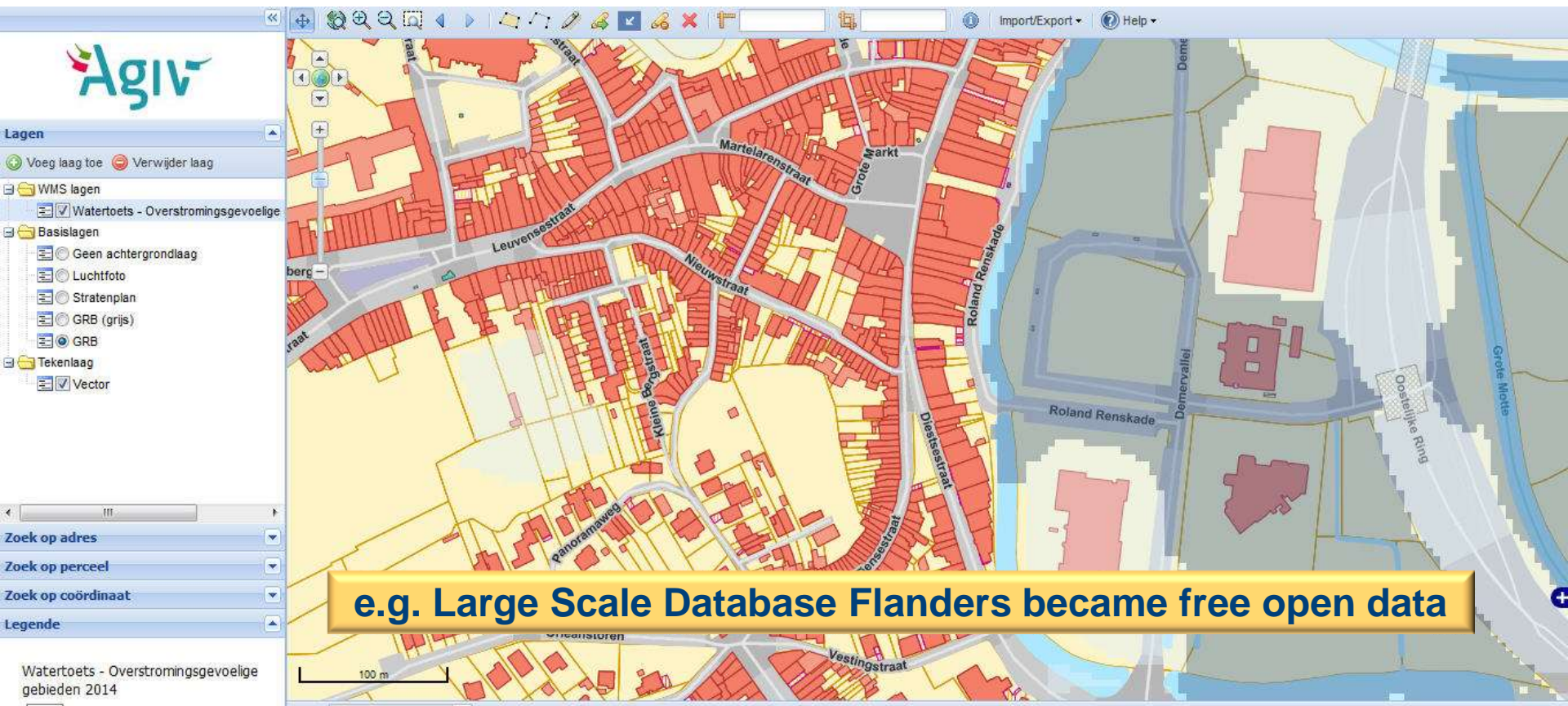
Pipelines and cables corridor

- ▶  Shipping, ports and dredging
- ▶  Aquaculture
- ▶  Sand and gravel exploitation
- ▶  Coastal protection



# INSPIRE in the Member States

- Public access and sharing are improving ...
  - Simplified procedures and harmonized licenses
  - More stakeholder groups become part of the SDIs



# INSPIRE in the Member States

- Indirect impacts of INSPIRE become visible
  - INSPIRE as a way of working
    - E.g. Renewed interest in spatial data modelling <> ad hoc modelling
  - INSPIRE cooperation across borders and sectors
    - Bi- and multilateral projects (e.g. The Nordic INSPIRE network)
  - INSPIRE starts supporting new applications
    - Public works, emergency, environment, health ...
  - INSPIRE is inspiring others
    - Other communities (e.g. Transport – ITS)
    - Other countries (Balkan, China, Latin-America)

# INSPIRE in the Member States

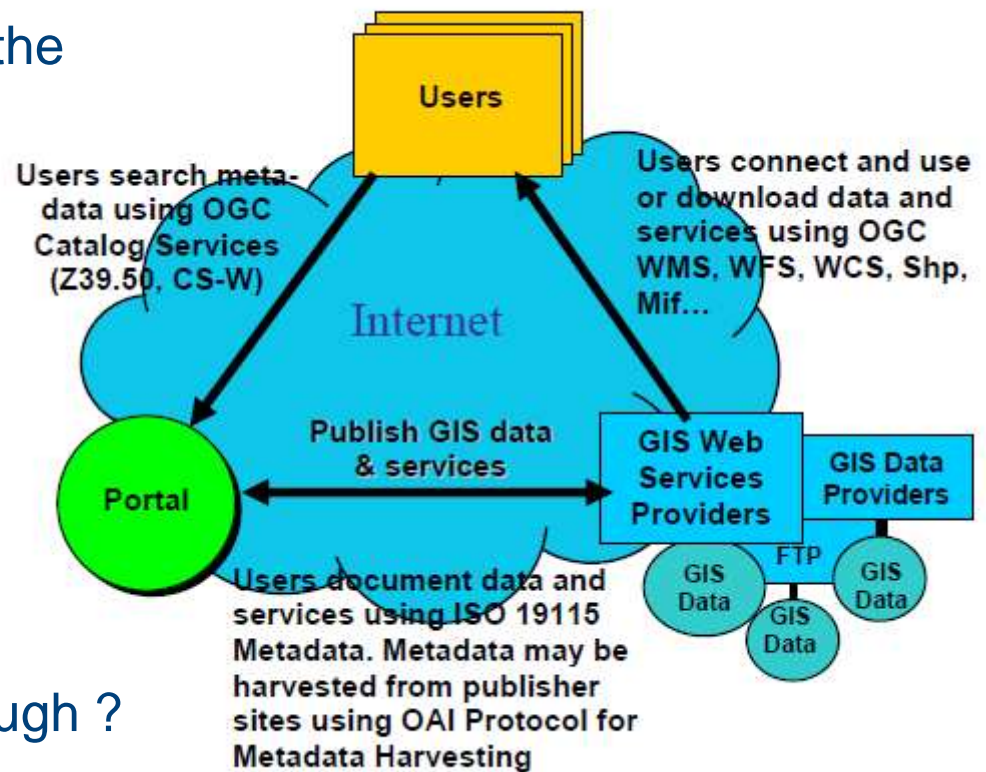
- In summary:
  - Much is already available ...
  - ... more is to be done ...
    - E.g. transforming datasets into INSPIRE conformant data sets
    - E.g. Improving access (view and download)
  - ... work is clearly in progress





# INSPIRE in the Member States

- But what with the usage?
  - Major mechanism to use the infrastructure
    - Search-Find-Bind



☞ That is good, but is it enough ?

# Outline

- INSPIRE in the Member States: where are we ?
- **INSPIRE as an obligation or an opportunity ?**
- Uptake of INSPIRE in work processes
- The (changed) role of NMCAAs

# INSPIRE: obligation or opportunity ?

- For sure, INSPIRE is a legal obligation
  - INSPIRE components should conform the rules
    - If not, the infrastructure will not work in a cross-border and cross-sector context
- But INSPIRE is also an opportunity
  - If stakeholders do go beyond the legal obligations
    - E.g. The development of view services with harmonized portrayal beyond the IR



**KU LEUVEN**

SPATIAL APPLICATIONS DIVISION

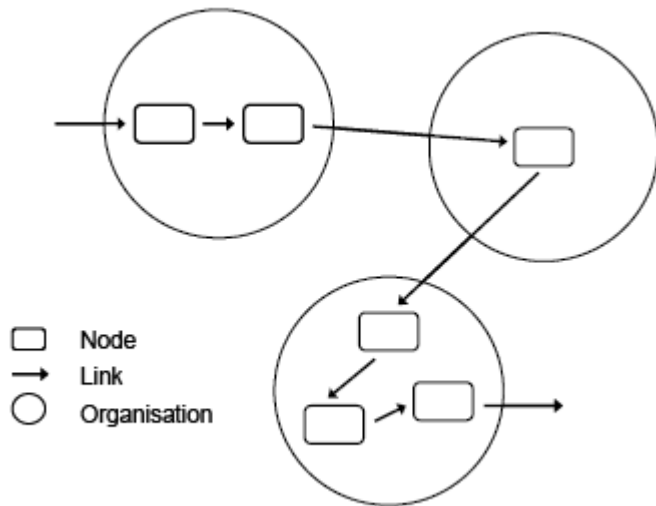
# INSPIRE: obligation or opportunity ?

- In order to make INSPIRE an opportunity, it should become more useful
  - Going beyond the Search-Find-Bind paradigm
  - Embedding INSPIRE components in Governmental work processes
    - E.g. At certain point the most successful Spanish View Service was a WMTS showing the cadastral parcels
    - It was embedded in many applications in governmental business processes (> 150 million annual requests) but could not be found in the catalogue at that time !

# Outline

- INSPIRE in the Member States: where we are ?
- INSPIRE as an obligation or an opportunity ?
- Uptake of INSPIRE in work processes
- The (changed) role of NMCAAs

# INSPIRE in work processes

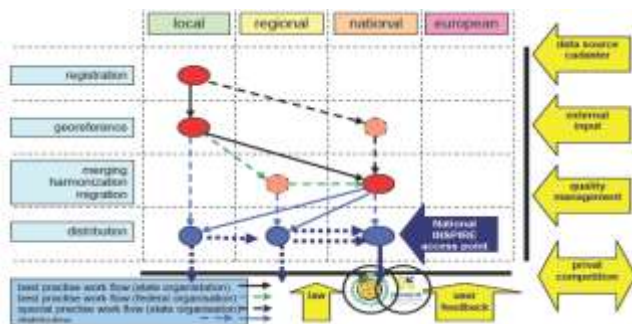


- What are work processes?
  - They consist usually of many G2G, G2B and G2C interactions
  - They involve many organisations and individuals
  - They often involve multiple levels of authority
  - They are more and more cross-border
  - They increasingly connect to other processes in other sectors

# INSPIRE in work processes

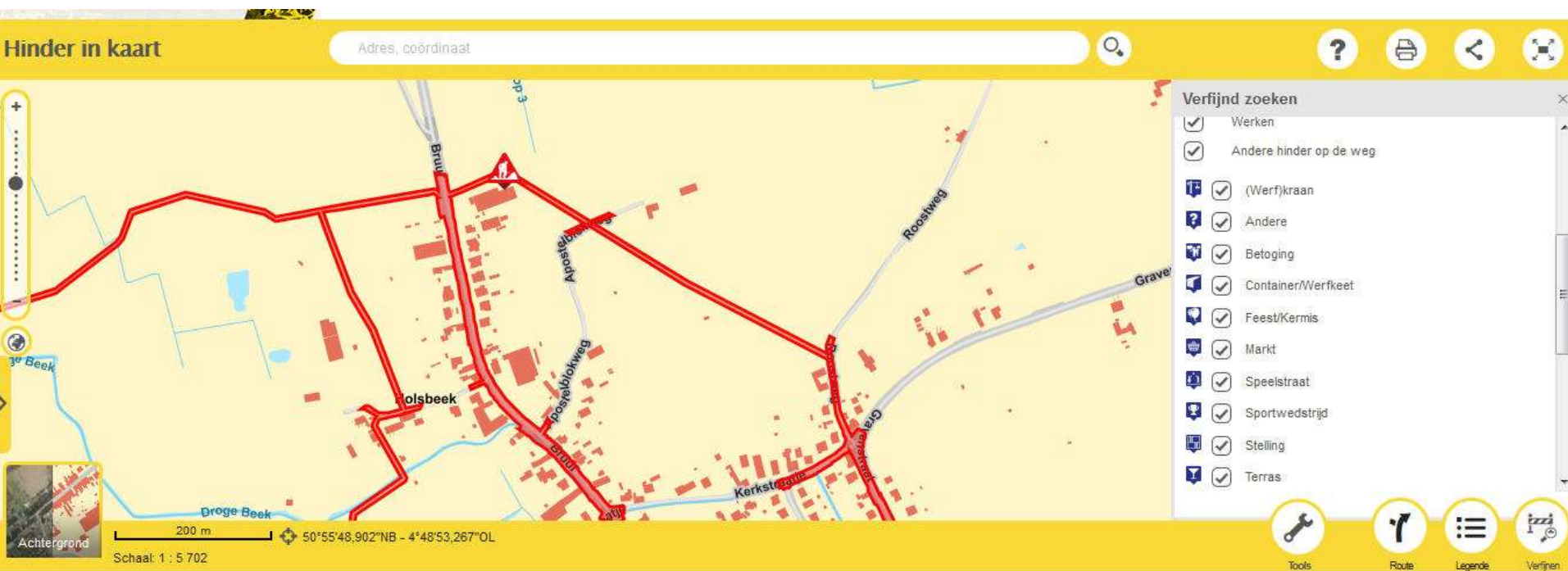


- Examples of work processes
  - Obtaining a building permit
  - Maintaining an address register
  - Declaring set-aside land under the CAP
  - Assessing the impact of a planned TEN-T project on a region and on the environment
  - Moving to another place and changing a citizens address
  - Delineating flood areas to provide “space for water”
  - Choosing a location for a new industrial plant



# INSPIRE in work processes

- Example of the use of INSPIRE components in a process
  - Locating events such as public works, demonstrations ...
  - Very successful but ... integration with the overall process should be improved
    - E.g. Companies carrying out works should be guided on using the app at the right moments in the process





# INSPIRE in work processes

- Sub-optimal use of location information and INSPIRE
  - Example: Monitoring Animal Transport
    - Related to the Health and Consumer Protection Policy Domain
    - Animal Health and Animal Welfare
      - on the farm
      - during transport
      - at time of slaughter or killing
    - Regulation (EC) No 1/2005 on the protection of animals during transport

☞ TRACES system

New outbreak

Dispatch date time \*: 15/09/2008 02:19

Country \*: BELGIUM

Disease \*: 09 B.T. (BLUETONGUE)

Reference number \*: 3006 /

Outbreak type \*: PRIMARY

Affected region \*: 0000 REGION D'ULWELLES-CAP

Type/Subtype: Select one

General information | Dates and animals | Free text | Related region

Control measure: AREA VAC  
PR1 SALV+  
[New outbreak](#)

Disease origin: Select one

Related outbreak: /

Location		x*	y*	z*
Latitude				
Longitude				

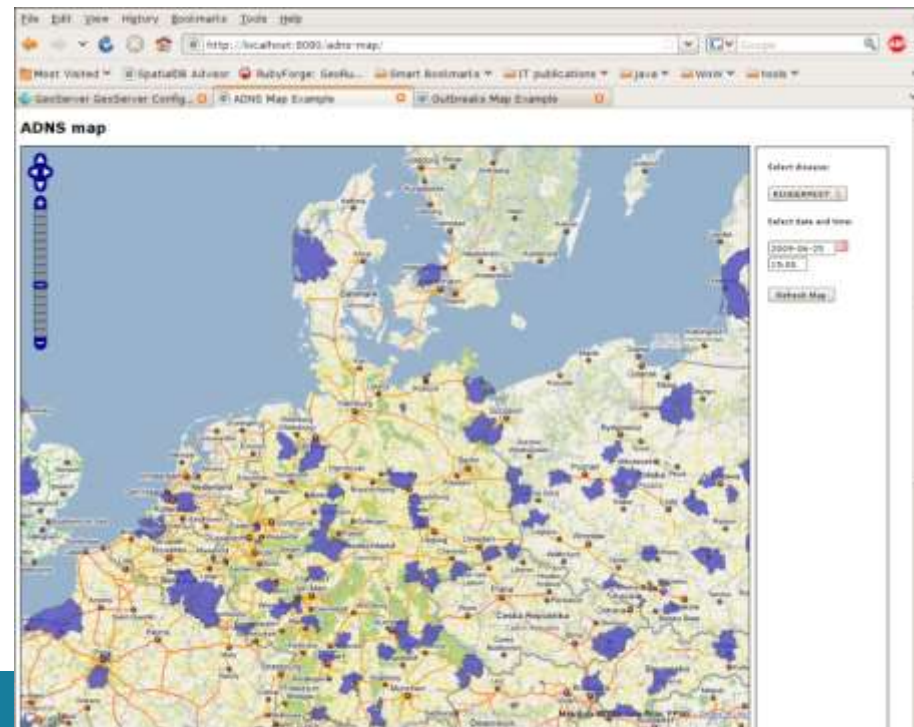
\* Mandatory data

Save

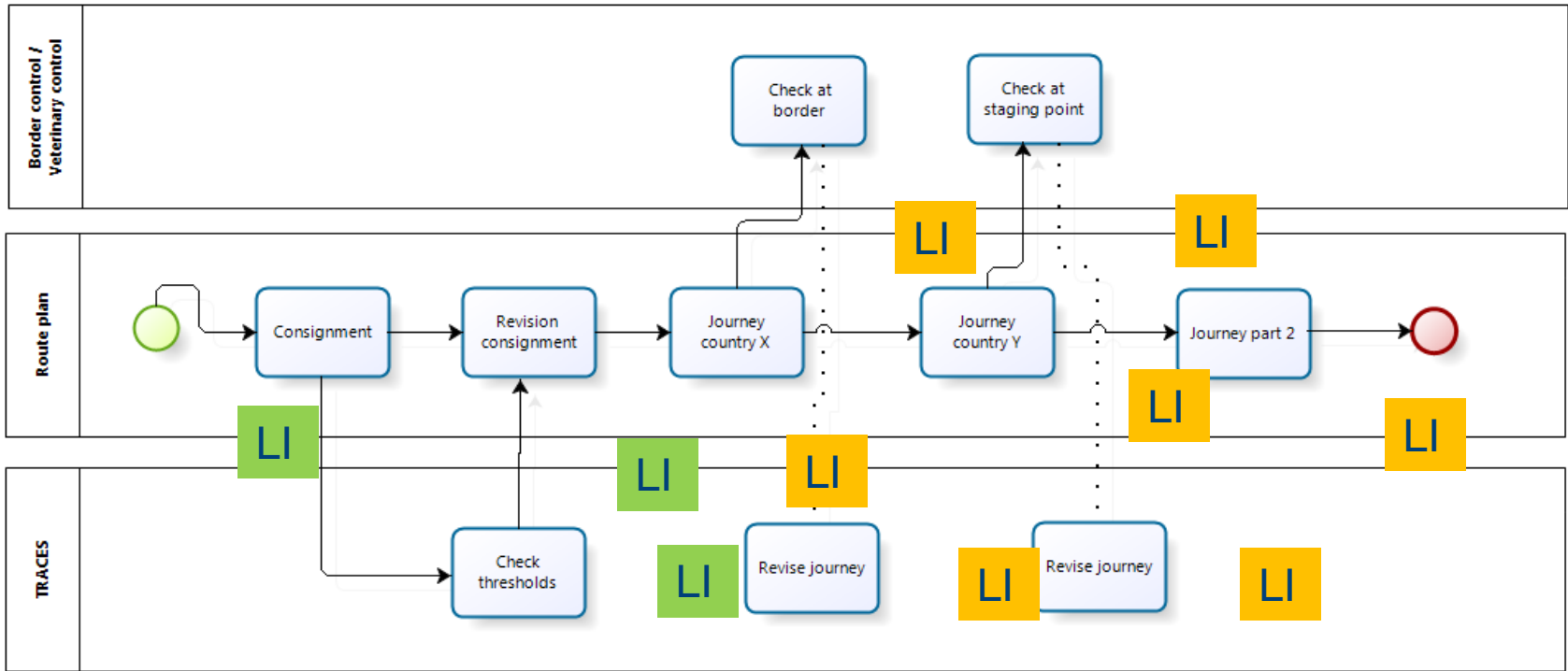
# INSPIRE in work processes

- Monitoring transport can become very complex
  - Travel time is estimated, reality can be different
  - Extending travel time can change the route
    - 8 hours and 19/24/29 hours thresholds
  - Other events can influence the route plan
    - E.g. Outbreak animal disease
    - Still a separate system

Location information  
and INSPIRE services  
Could help supporting  
The process



# INSPIRE in work processes



LI = location information

- Powered by

Animal Disease Notification Process



# INSPIRE in work processes

- Location information is currently used (TRACES) at the moment of defining the consignment
  - Transporter
  - European Commission (control)
  - Checks on vehicles via satellite, use of GPS (being implemented)
- Location information could also be used at several other points in the process
  - By border control / customs
  - By veterinarian bodies
  - By staging point managers (~ animal hotels)
  - By ADNS managers
- Currently no INSPIRE services used

# Outline

- INSPIRE in the Member States: where are we ?
- INSPIRE as an obligation or an opportunity ?
- Uptake of INSPIRE in work processes
- The (changed) role of NMCA's

# The (changed) role of NMCA

- NMCA play a key-role in implementing INSPIRE
  - Many of the themes are the responsibility of the NMCA
    - Prepare INSPIRE conformant datasets and network services
    - Prepare and maintain metadata for data and services
  - This role is going further
    - Providing the good example: be the first and provide reference implementations
    - Help resolving the cross-border challenge
    - Key expertise in high quality portrayal for WMS/WMTS
  - ELF is an important asset from that perspective

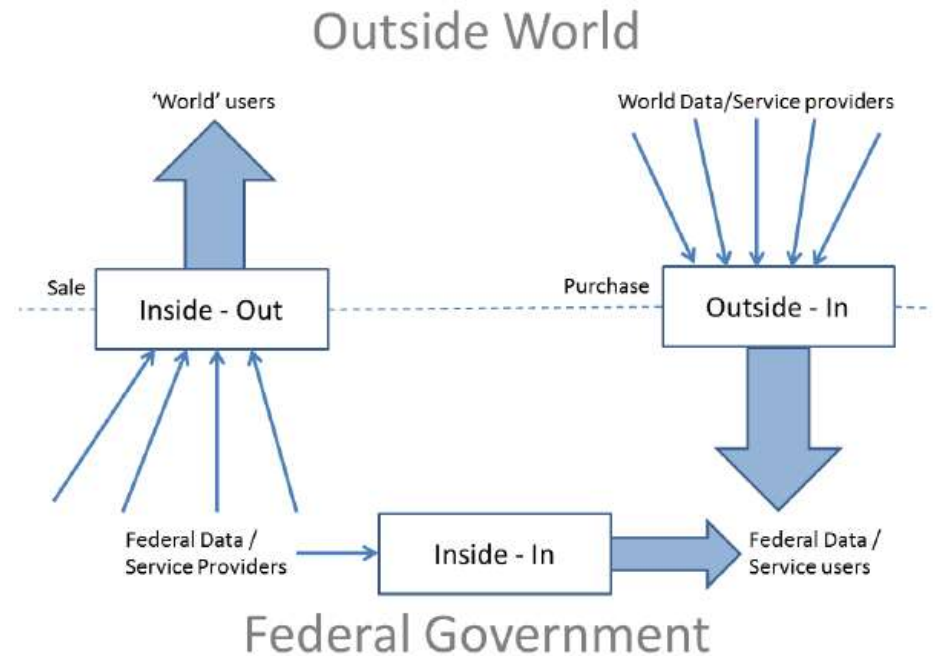


# The (changed) role of NMCA

- NMCA should think and go beyond INSPIRE
  - Not only matching the minimum requirements
    - Extending data models to match specific community requirements
    - Many (user) views on the same data
    - Simplify sharing and re-use arrangements
  - Think from the user communities perspectives



# The (changed) role of NMCA



- **NMCA as geo-brokers**

- Supporting and coordinating role towards other stakeholders
  - Data transformation – organisations are struggling !
  - Central role in conformity checking
  - Transfer of know-how
- This requires new business models





# The (changed) role of NMCA

- Follow a dynamic and innovative approach
  - Several mechanisms are available
    - Involvement in European projects (H2020, ICT-PSP, ...)
    - Setting-up an innovative ICT eco-system: including testbeds, experiments
    - Follow and be involved in the standardisation process



**The sandbox approach**

**KU LEUVEN**

SPATIAL APPLICATIONS DIVISION

**Thank you!**  
**Questions?**

<http://www.sadl.kuleuven.be/>



[danny.vandenbroucke@SADL.kuleuven.be](mailto:danny.vandenbroucke@SADL.kuleuven.be)