



The **Council** of European Geodetic Surveyors
Comité de Liaison des Géomètres Européens

CLGE Working for a Profession



“Tradition meets Innovation”

CVC 2017

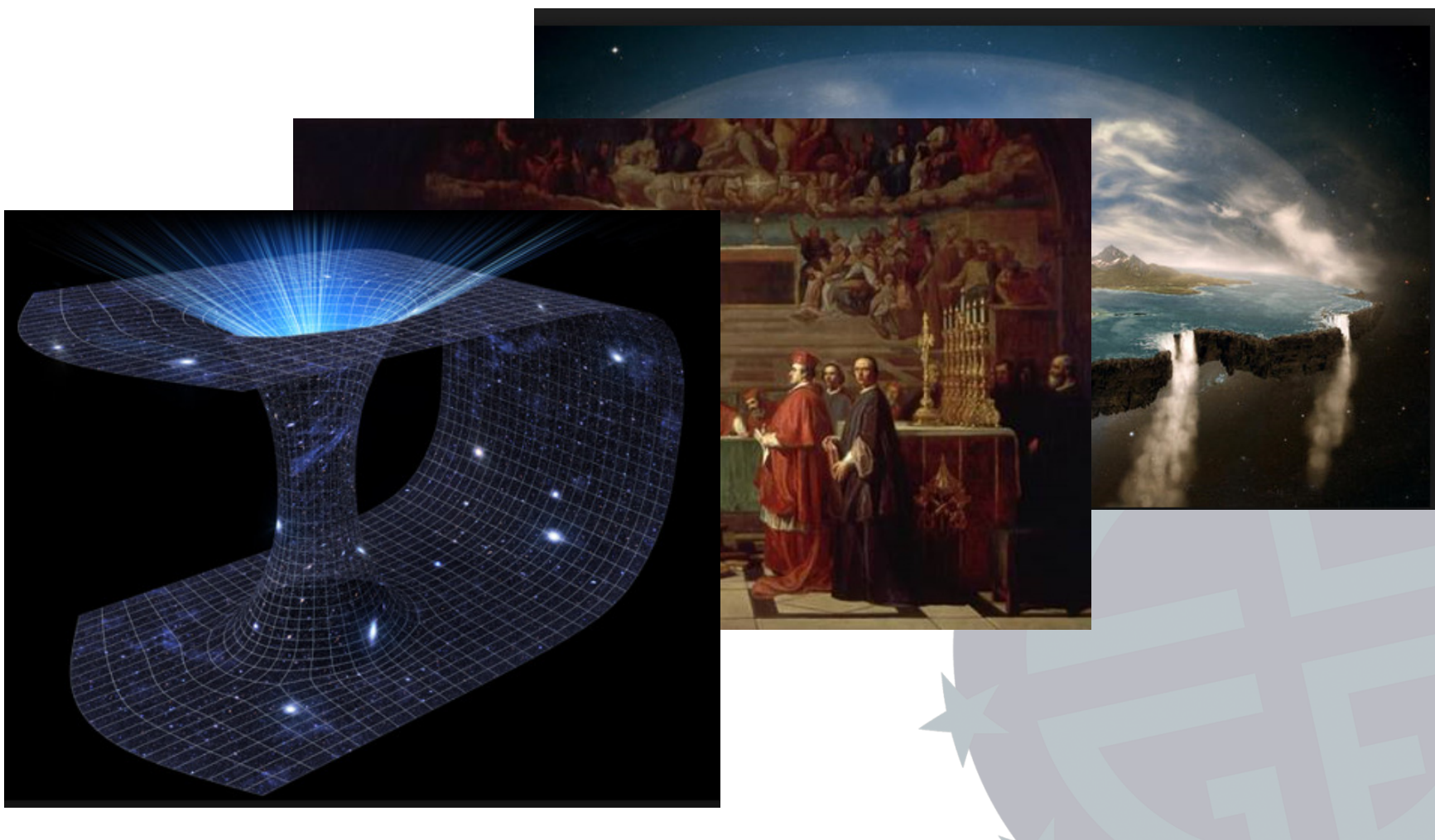
Joint CLGE, ELRA, EuroGeographics, FIG, EULIS, PCC, and UNECE WPLA Conference

Vienna, Austria 5-6 October 2017



The **Council** of European Geodetic Surveyors
Comité de Liaison des Géomètres Européens

Changing world





The **Council** of European Geodetic Surveyors
Comité de Liaison des Géomètres Européens

Changing world





The surveyor yesterday and today

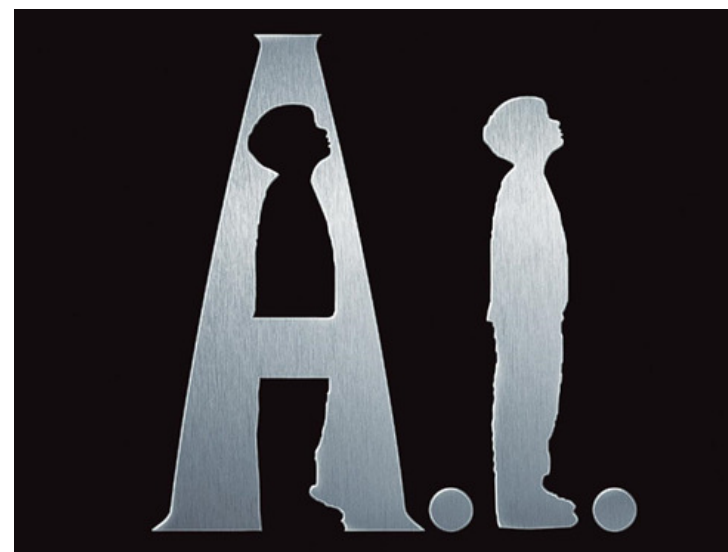
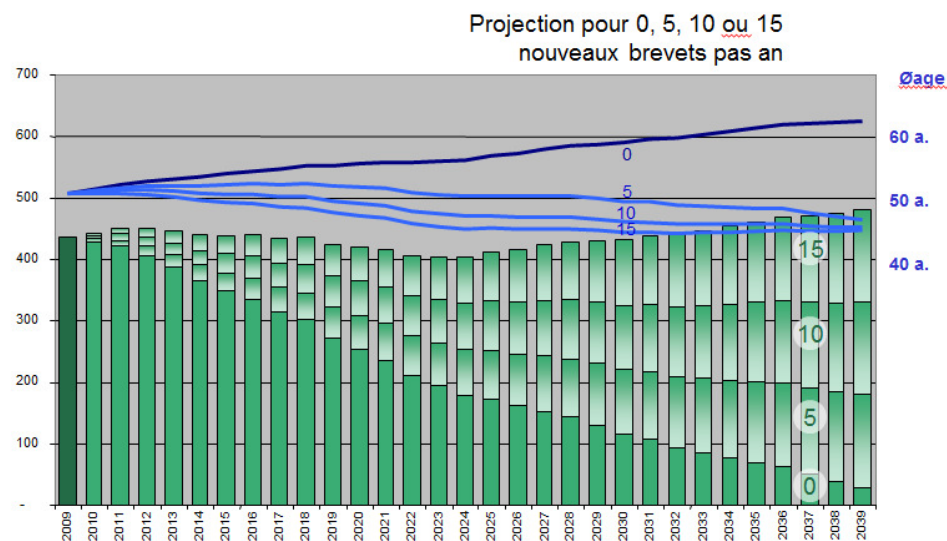
- The technology and the society make us evolve

The pressure of technological development is driving social change





The surveyor tomorrow?





The (r)evolution of data

- Linked data
- Internet of things
- Open data
- Big Data
- Data mining





The (r)evolution of ID

- Is it really the future?





The (r)evolution of mapping

- Towards a new dynamic dimension of the maps
- Virtual reality

The parcel as the
nucleus of every real
representation





The (r)evolution of communication

- Towards a new mobility...

Could we live without our smartphone ?





The (r)evolution of cadastre

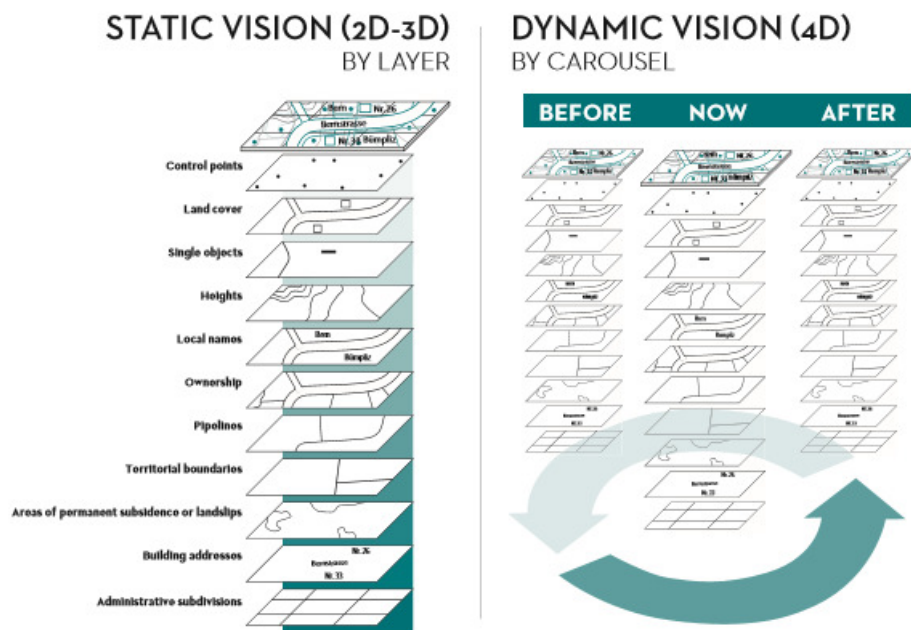
- Augmented reality

Apps will be the basis of all land representations, including those in the cadastre





The (r)evolution of cadastre



**Numerous political
decisions depend on
official data**

The principle of legal independance

Legal Topics:

Resource exploitation
Collective land rights
Water protection
Traditional rights
Environmental protection
Land use planning
Land property
Topography
Natural resources
Natural land objects

Legal Object Boundaries: Rightful Claimants:

Chartered company
Corporation
Society
Tribe, Clan
Society
Society
Private Land Owners
Society
Society
Society



The (r)evolution of citizen

- The augmented citizen...

Citizens as the nation's number one surveyors !





The (r)evolution of citizen

- Crowdsourcing

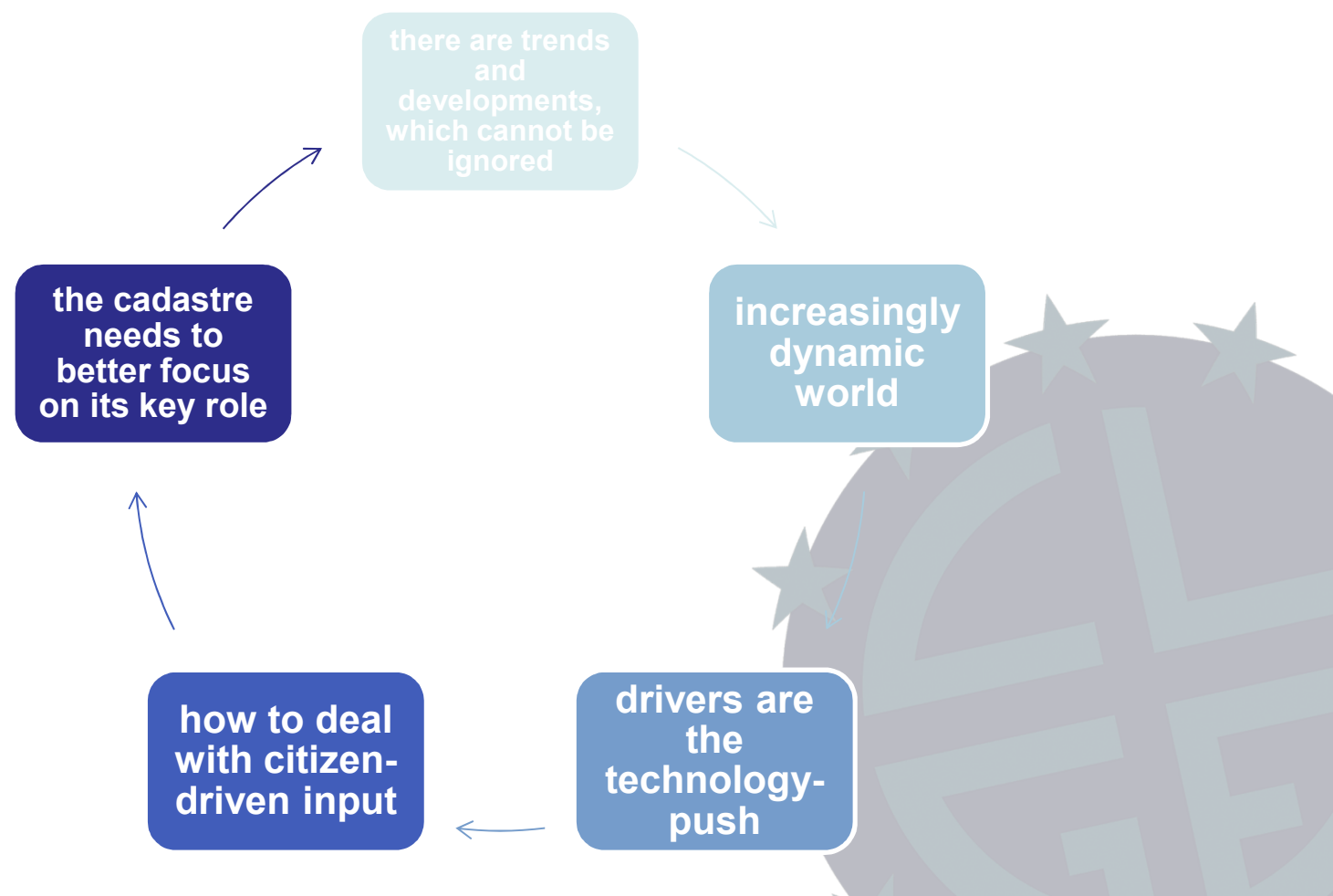
The legitimate often prevails
over the legal

The territory is the map





Where are we going?





Where are we going?

- Crowdsourcing...where are the limits?
- Can new technologies like blockchains replace the legal system?
- Will the cadaster be always in the center of the GI?

