

# How ICGC is adapting metadata to INSPIRE requirements

Joel Plana



**ICGC**  
Institut  
Cartogràfic i Geològic  
de Catalunya



**Generalitat  
de Catalunya**

# How ICGC is adapting metadata to INSPIRE requirements

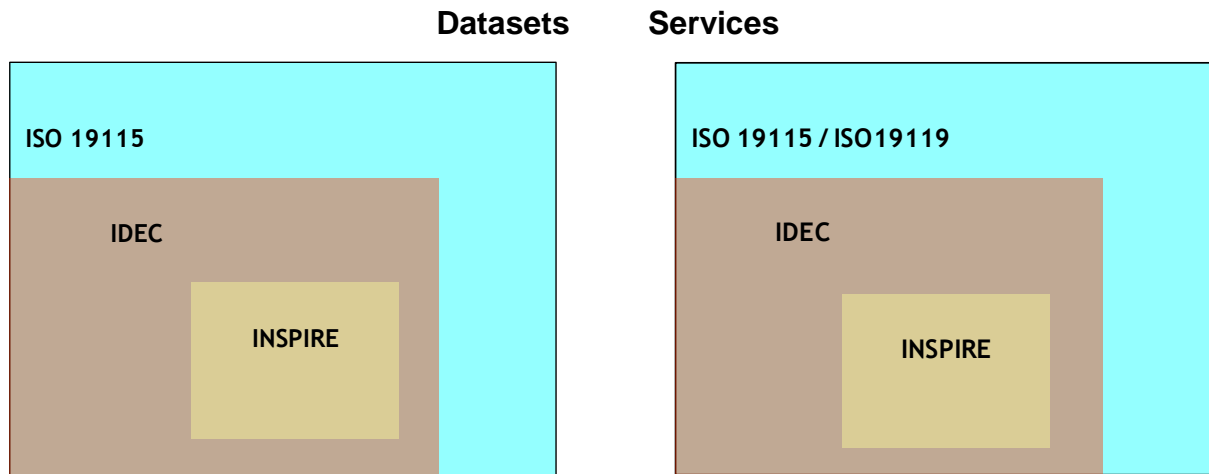
## Index

- **State of art of ICGC metadata**
- **Workflow to adapt metadata to INSPIRE requirements**
- **Analysis of results**
- **About INSPIRE validator**
- **Conclusions**

# How ICGC is adapting metadata to INSPIRE requirements

state of art of ICGC metadata

ICGC / IDEC metadata environment at conceptual level



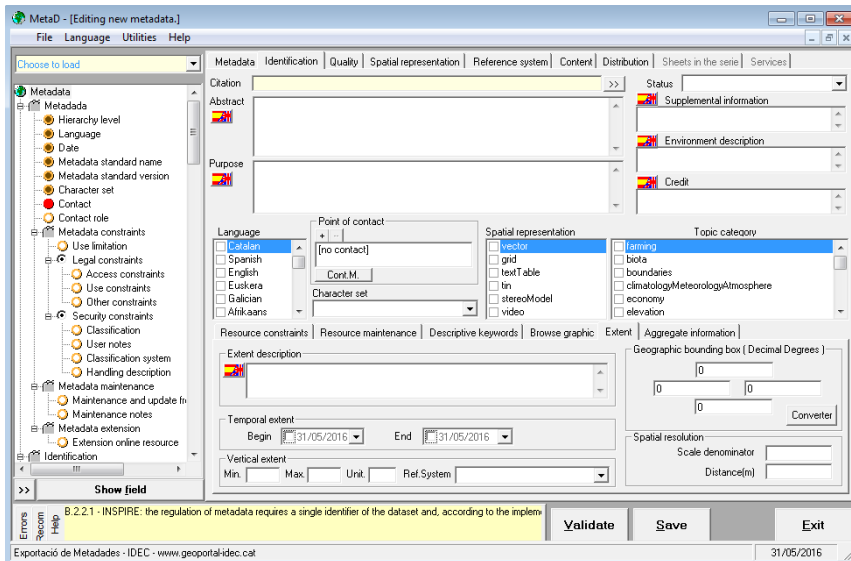
# How ICGC is adapting metadata to INSPIRE requirements

state of art of ICGC metadata

ICGC current tool to generate metadata



## MetaD



**2002 Innovative and pioneer  
in National context**

Created in 2002

Desktop tool

Proprietary code application

Does not take account some INSPIRE  
requirement

**2016 Currently outdated  
Needs to be rethought**

# How ICGC is adapting metadata to INSPIRE requirements

state of art of ICGC metadata

ICGC / IDEC migration to a new tool to generate and manage metadata



## Geonetwork tecnologia

Free and open source (FOSS)

Implementation scheduled for the last quarter of 2016

Cataloging (and editing) application

Web tool:

Easily upgradeable with new requirements

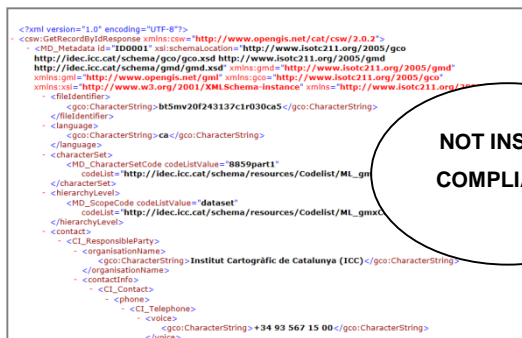
Improving the flow of metadata publication

# How ICGC is adapting metadata to INSPIRE requirements

state of art of ICGC metadata

## ICGC Transition Phase

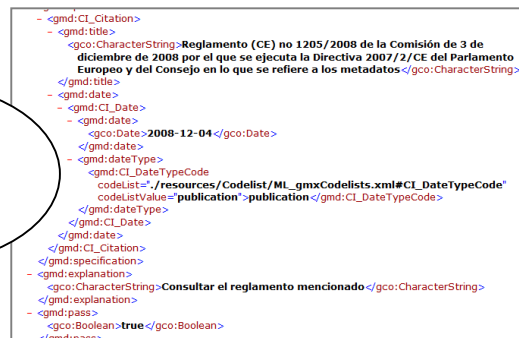
Two  
simulta  
neous  
proces  
ses



NOT INSPIRE  
COMPLIANCE



INSPIRE  
COMPLIANCE



# How ICGC is adapting metadata to INSPIRE requirements

state of art of ICGC metadata

Analysis of ICGC metadata vs. INSPIRE requirements: INSPIRE Metadata Validator

ICGC Metadata initial situation

Datasets

BT-5M

Average degree of conformity of INSPIRE Metadata: 64.71%

Services

WMS CT1M

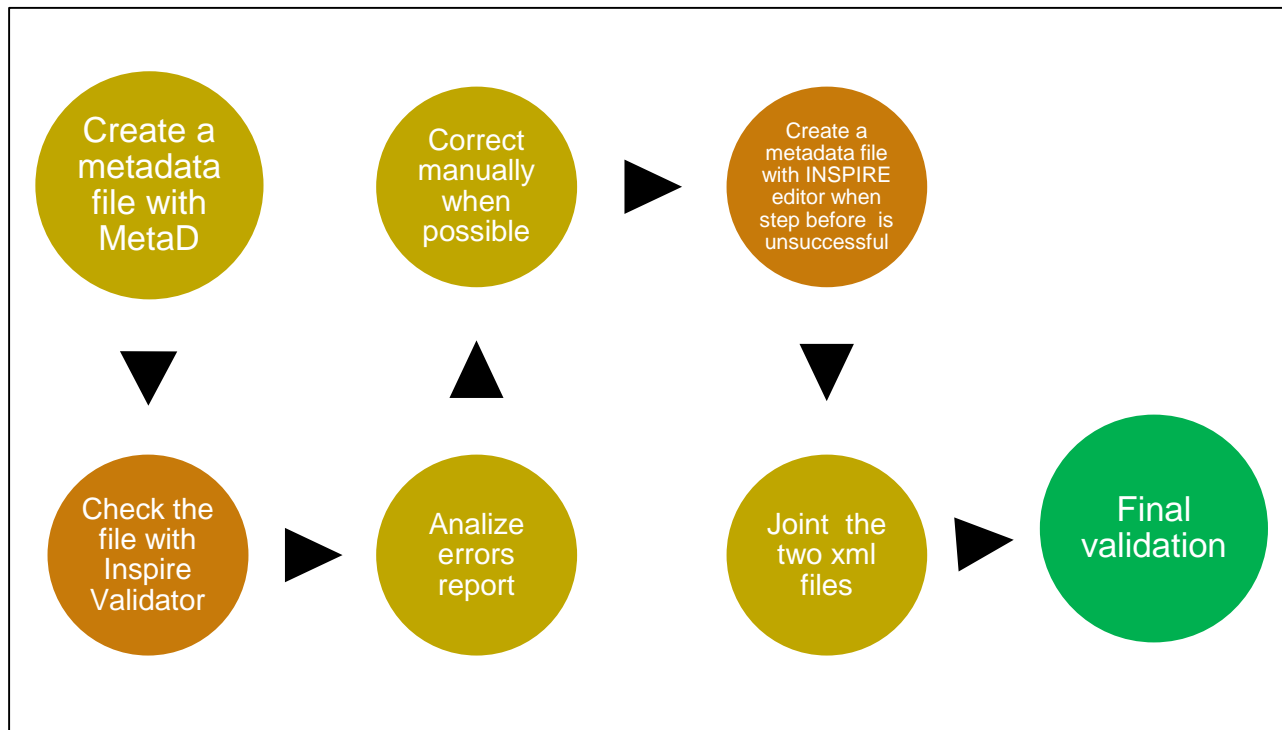
Average degree of conformity of INSPIRE Metadata: 78.57%



GOAL : 100% of conformity

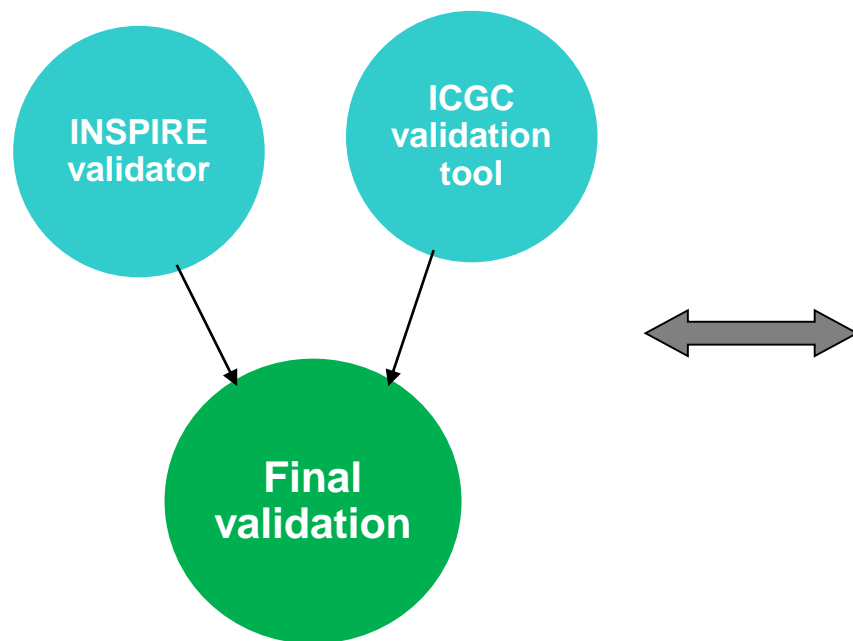
# How ICGC is adapting metadata to INSPIRE requirements

## Workflow to adapt metadata to INSPIRE requirements

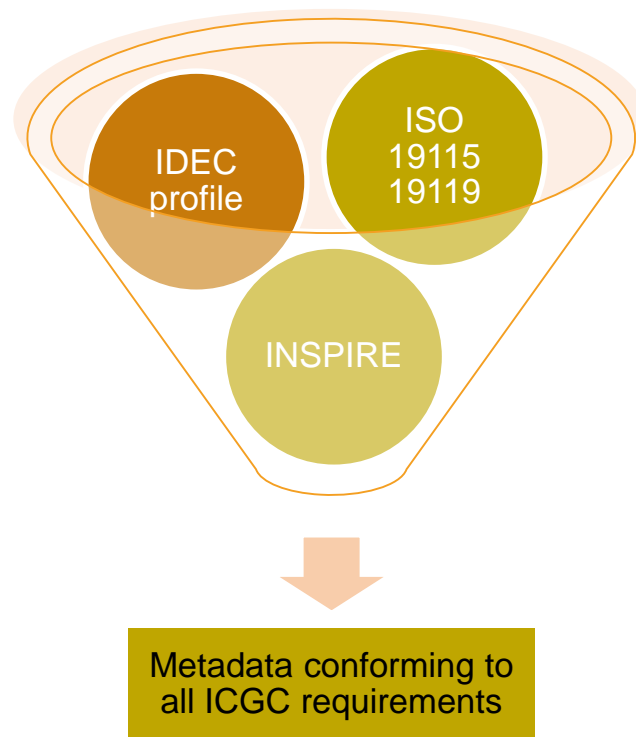




## How ICGC is adapting metadata to INSPIRE requirements



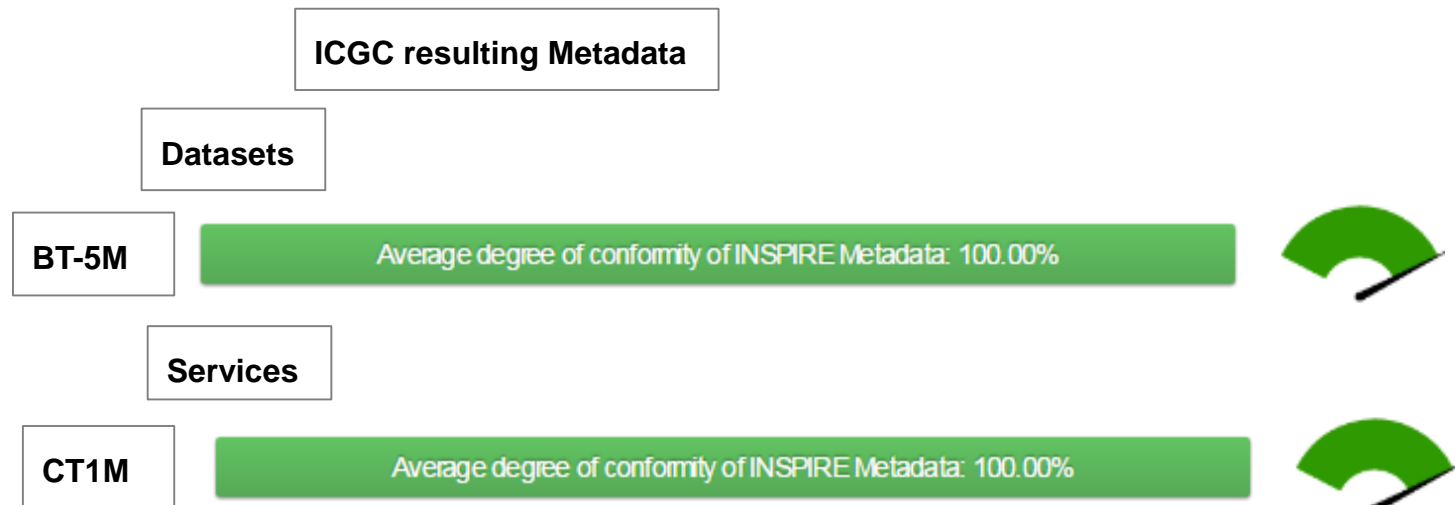
### Workflow to adapt metadata to INSPIRE requirements



# How ICGC is adapting metadata to INSPIRE requirements

## Analysis of results

### Analysis of ICGC metadata vs. INSPIRE requirements: INSPIRE Metadata Validator



# How ICGC is adapting metadata to INSPIRE requirements

## Analysis of results

The highest degree of conformity of ICGC Metadata in Catalan = 88%

ICGC original metadata

Average degree of conformity of INSPIRE Metadata: 88.24%



- The metadata element "Metadata Language" is missing, empty or incomplete but it is required. Hint: ""

*Relevant documentation:*

- See *INSPIRE Metadata Implementing Rules: Technical Guidelines based on EN ISO 19115 and EN ISO 19119 (Version 1.3)*
- See *Commission Regulation (EC) No 1205/2008 of 3 December 2008 implementing Directive 2007/2/EC of the European Parliament and of the Council as regards metadata*

*Expert documentation*

- *UML Requirement Diagram*

At the moment no problem because MetaD generate 3 language versions (different files): cat, spa, eng.

Spanish & english version

Average degree of conformity of INSPIRE Metadata: 100.00%



In the future Geonetwork will generate 1 file in Catalan with 2 pt.locale (spa, eng), so...

# How ICGC is adapting metadata to INSPIRE requirements

## About INSPIRE validator

### **INSPIRE validator:**

**It is an useful tool: simple and easy.**

**Determine at the moment the degree of conformity with INSPIRE requirements.**

**Identify and document the errors.**

**The descriptions of errors are sometimes not clear enough ... but are improving.**

**...**

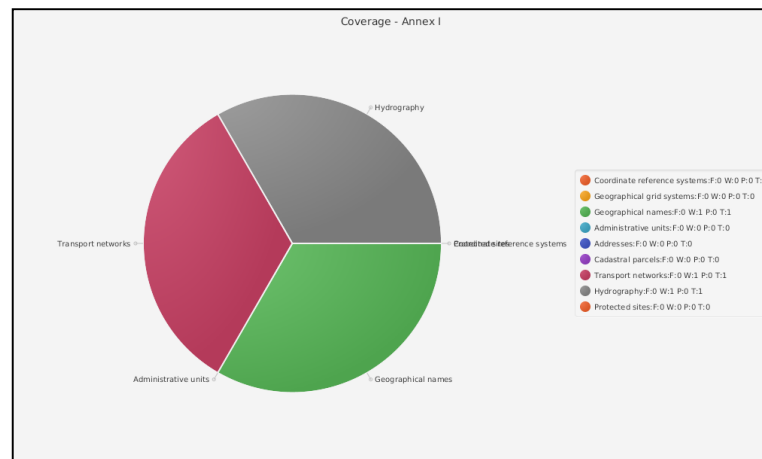
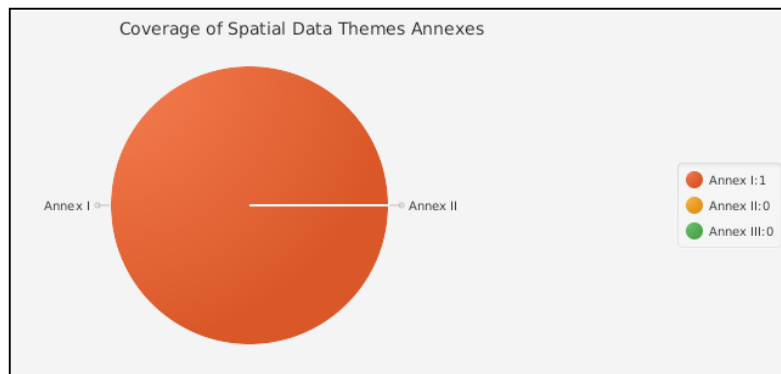
# How ICGC is adapting metadata to INSPIRE requirements

## About INSPIRE validator

### INSPIRE validator:

Recently the validator provides graphical information about the content of the metadata and the documented DATA...

- Thematic coverage of the data



# How ICGC is adapting metadata to INSPIRE requirements

## About INSPIRE validator

### INSPIRE validator:

Also recently it has changed the level of tolerance of some items.

- For example Reference system (presence and domain).



## How ICGC is adapting metadata to INSPIRE requirements

### Conclusions

#### ***ICGC view:***

The fact of having an outdated metadata editor – MetaD – which does not take into account the INSPIRE requirements, forces organizations to edit the metadata files manually. Migration to GeoNetwork is understood by ICGC / IDEC as a nice opportunity to overcome such problems and developing a completely new metadata edition / validation environment.

## How ICGC is adapting metadata to INSPIRE requirements

### Conclusions

#### ***INSPIRE Validator view:***

This is a very valuable tool because determines the degree of conformity with INSPIRE requirements and identify and document the errors. However, the descriptions of the errors are sometimes not clear enough... but are improving. It would be recommendable to add examples showing how to correct the errors detected and keep updated the warning about the changes of the validator tool.



## How ICGC is adapting metadata to INSPIRE requirements

### Conclusions

#### ***INSPIRE Editor view:***

This is a very valuable tool to generate an appropriate XML file for INSPIRE purposes. It would be recommended that the editor allow to document optional metadata fields, which are not present at the moment (e.g. CRS to which data sets are referenced).

## How ICGC is adapting metadata to INSPIRE requirements

**Institut Cartogràfic i Geològic de Catalunya**

Parc de Montjuïc,  
E-08038 Barcelona

41°22'12" N, 2°09'20" E (ETRS89)

 [www.icgc.cat](http://www.icgc.cat)

 [icgc@icgc.cat](mailto:icgc@icgc.cat)

 [twitter.com/ICGCat](https://twitter.com/ICGCat)

 [facebook.com/ICGCat](https://facebook.com/ICGCat)

Tel. (+34) 93 567 15 00

Fax (+34) 93 567 15 67

