

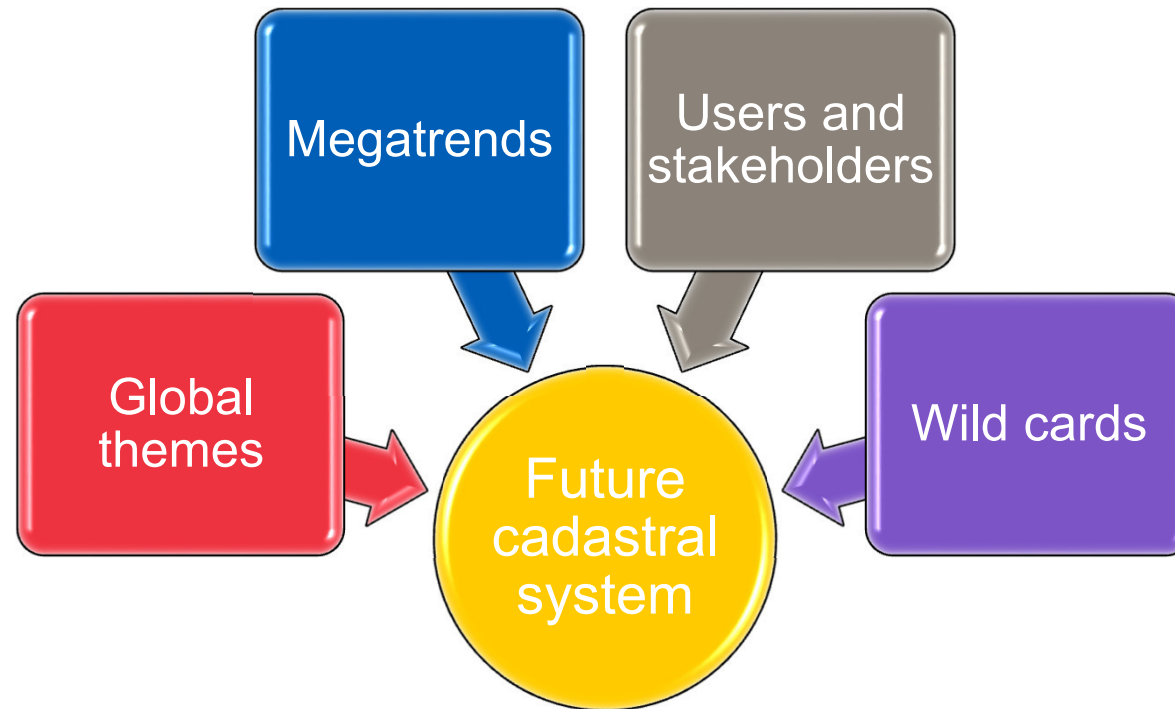


Cadaastre 2035 – research project

*Dr. Kirsikka Riekkinen, Aalto University, Finland
M.Sc. Pauliina Krigsholm, National Land Survey of Finland*

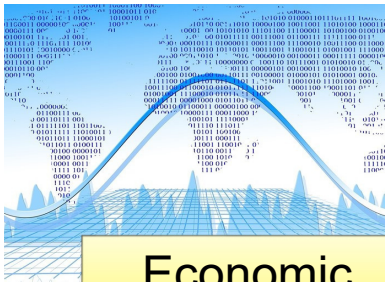
Common Vision conference in Vienna, October 5th to 6th, 2017

The aspects of the research

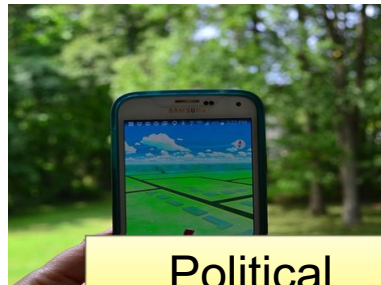


Megatrends

A1



Economic



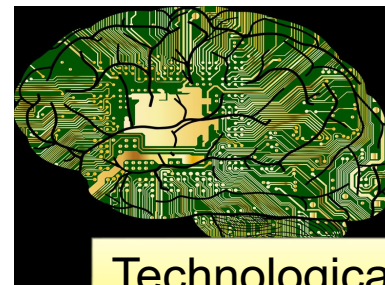
Political



Environmental

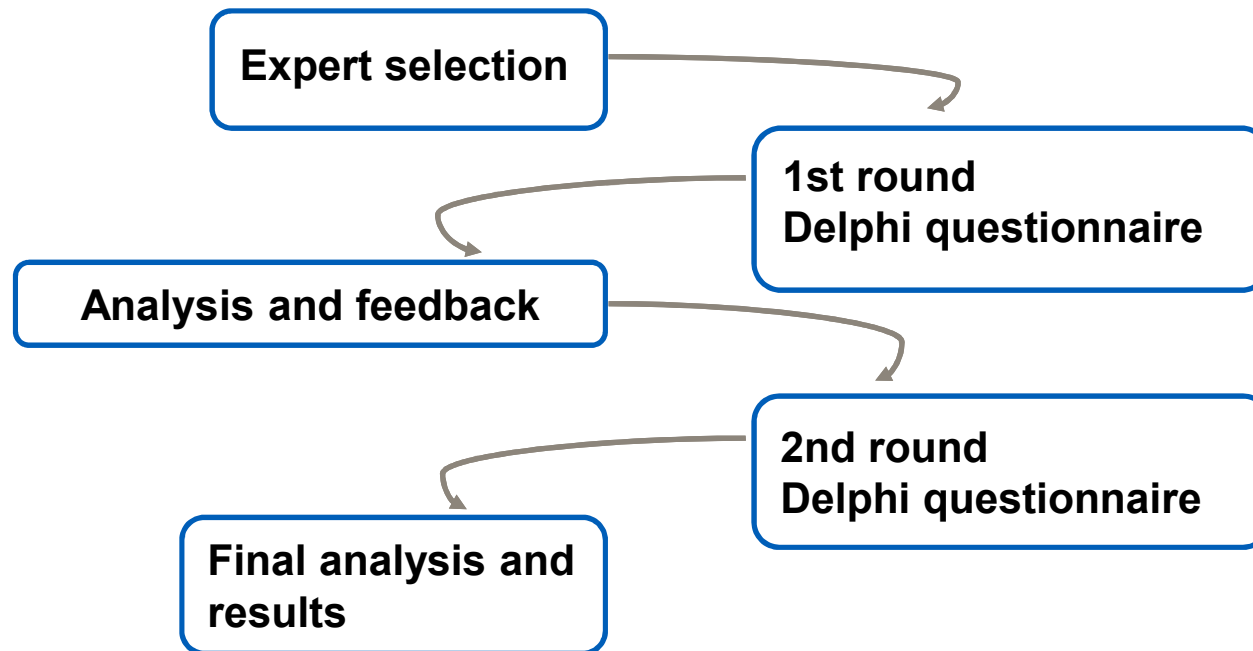


Social

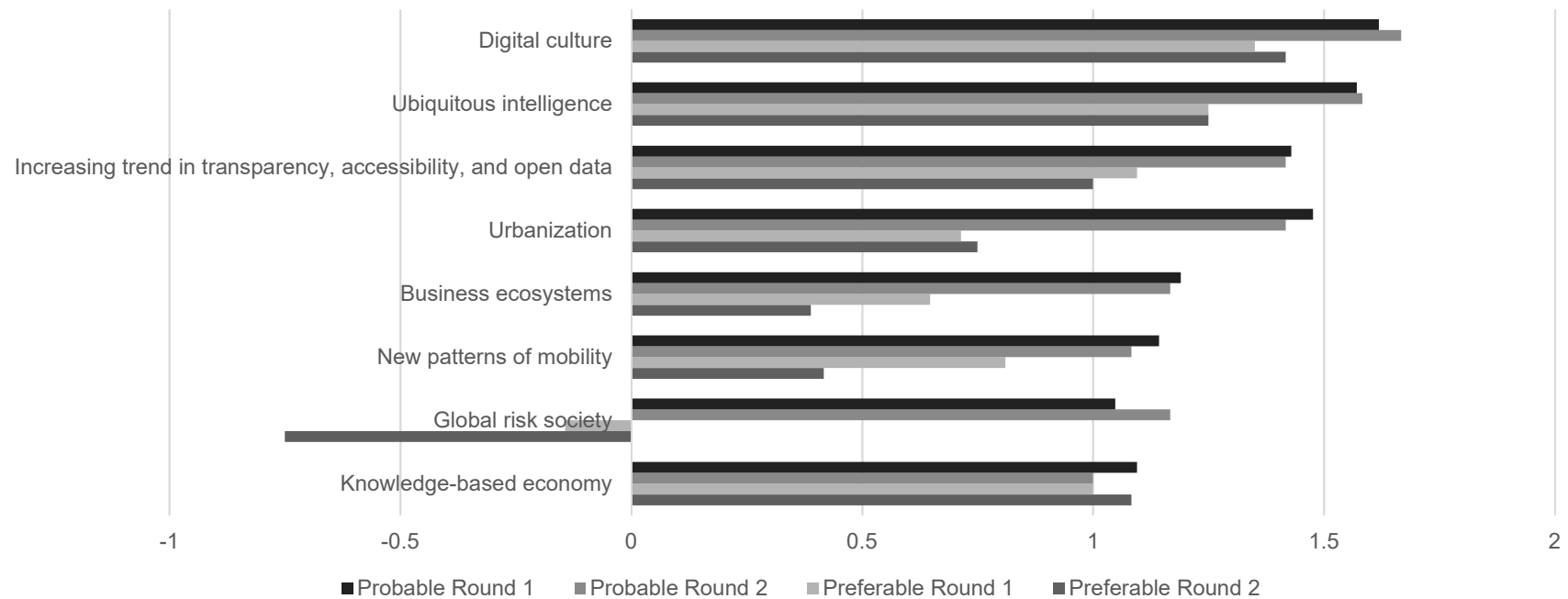


Technological

The study design



Results



Results

Megatrend	Anticipated impacts
Digital culture	More convenient use and exchange of information
Ubiquitous intelligence	Better and faster public services
Increasing trend towards transparency, accessibility and open data	New forms of public services; Interfaces with other public data sources; 'Parallel' cadastres should become unnecessary
Urbanization	Building and planning information as part of the cadastre; True 3D; Higher volume (more real property units)
Business ecosystems	New innovations; Shared processes and new forms of collaboration
New patterns of mobility	Smart transportation as part of cadastral data collection; International standards and harmonization of cadastral data; Fully coordinate-based cadastre
Global risk society	Cybersecurity threats; Privacy protection and possible conflicts with open data
Knowledge-based economy	Crowdsourcing/ voluntary geographic information; Cadastre as a source material for new innovations

Conclusions

- Most of the megatrends examined in this study were seen more as opportunities than as threats for the Finnish cadastral system
- Finnish experts view the development of the cadastral system as a technology-driven process
- Many panellists mentioned a need to rethink the role of cadastral system
 - *A call for further discussions?*
- Results help guiding the future research to right direction

Publications

Krigsholm, P., Zavialova, S., Riekkinen, K., Ståhle, P., Viitanen, K. 2017. Understanding the future of the Finnish cadastral system – A Delphi study. Land Use Policy (68) 133-140.

Riekkinen, K., Toivonen, S., Krigsholm, P., Hiironen, J., Kolis, K. 2016. Future themes in the operational environment of the Finnish cadastral system. Land Use Policy (57), 702-708.

Contacts:

kirsikka.riekkinen@aalto.fi
pauliina.krigsholm@nls.fi

