

# *Collaborative Approaches for Bringing Together Land Development and Land Administration*

Actual case: Highway extension  
between Luterbach and Härkingen

Lilian Zihlmann  
Sofies-Emac AG, Zurich, Switzerland

[lilian.zihlmann@sofiesgroup.com](mailto:lilian.zihlmann@sofiesgroup.com)

# Why do we need collaborative approaches?

**→ Spatial conflicts through multiple land-use demands with complex interactions triggered by several large scale infrastructure projects**

# Context

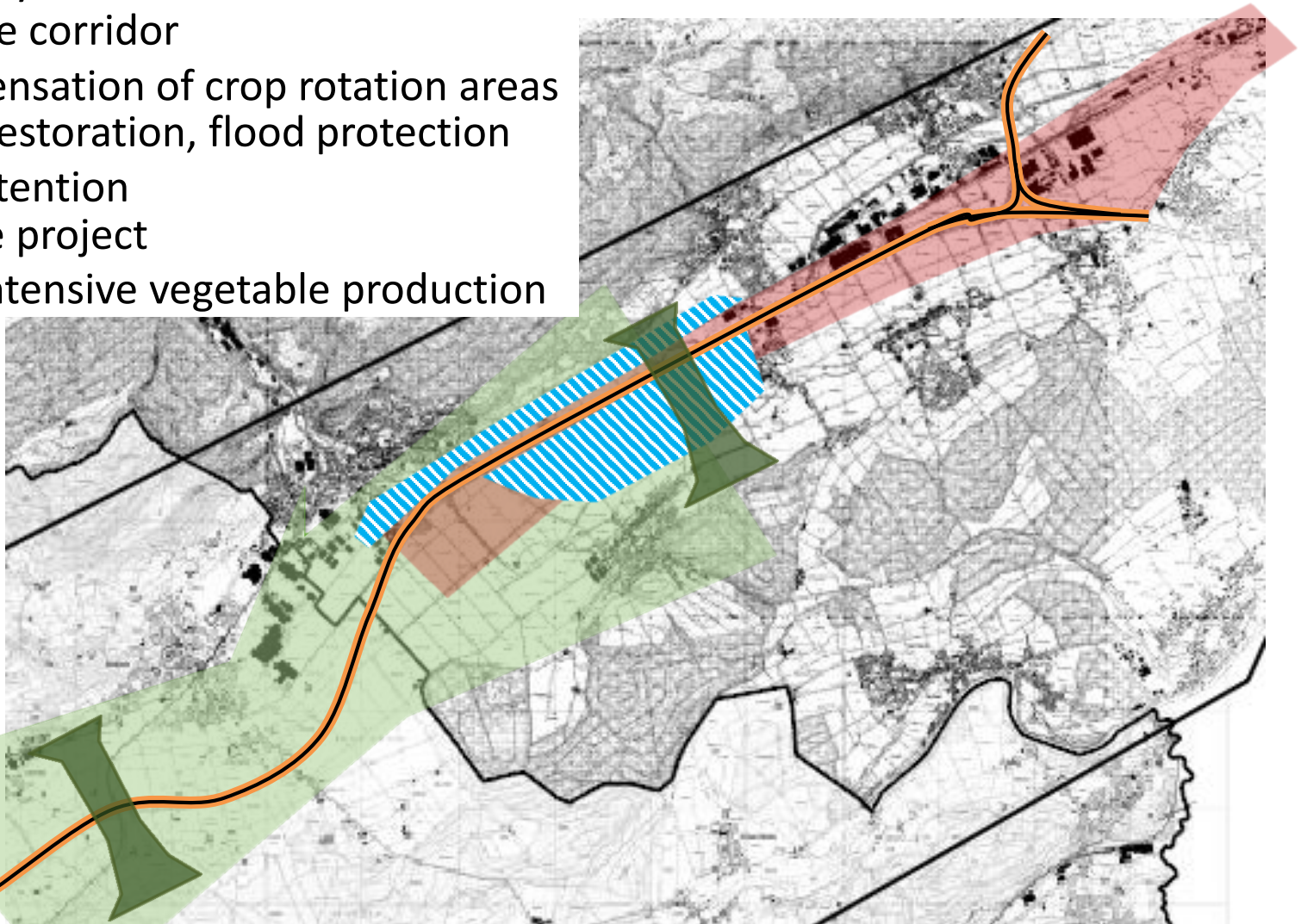


Source: Google Maps

- Swiss Plateau (Mittelland)
- Industrial zones, logistic centers
- European highway transit routes
- Development of settlement areas is restricted
- High intensive agricultural production

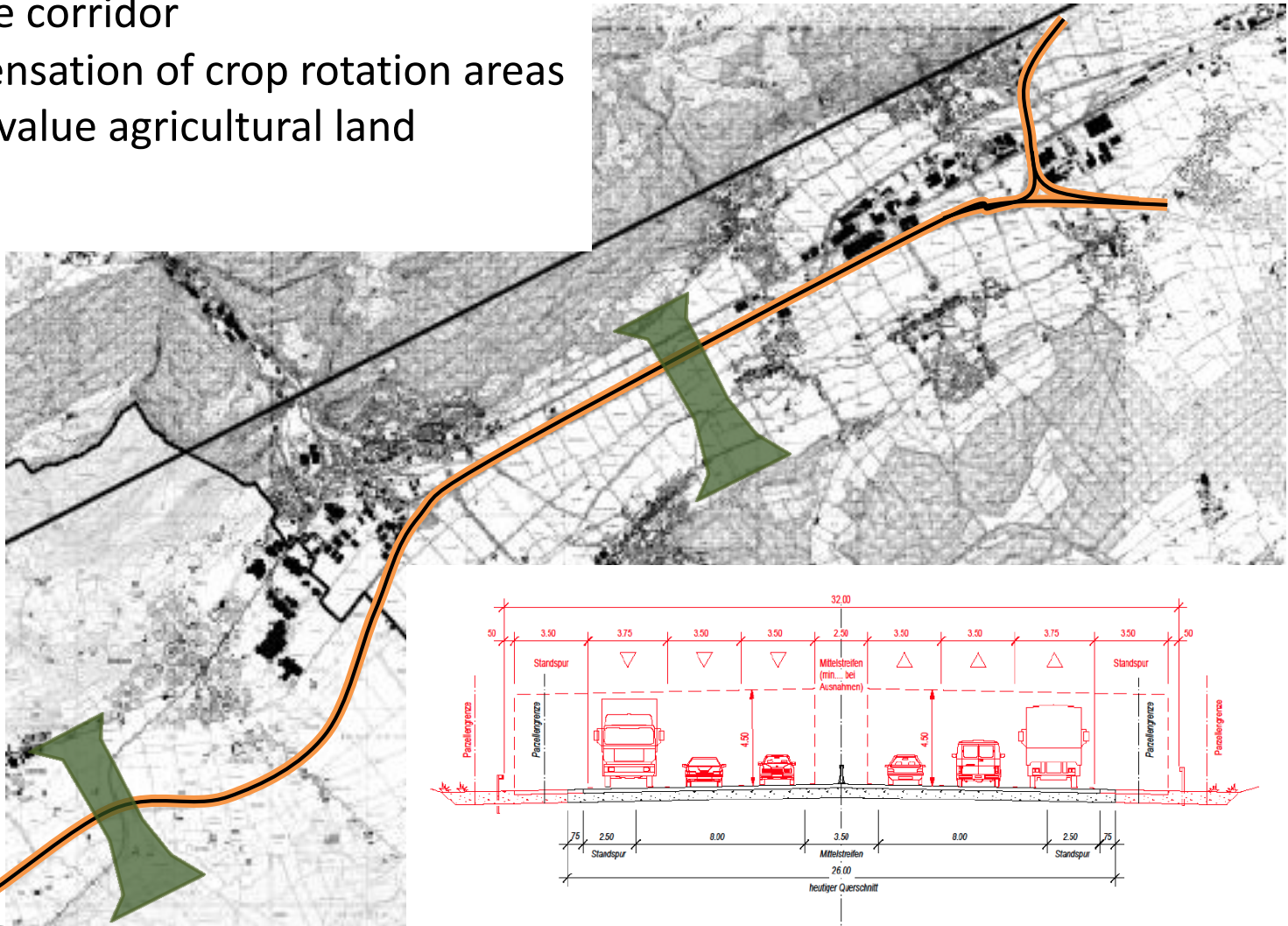
# Multiple and high land-use pressure

- Highway extension
- Wildlife corridor
- Compensation of crop rotation areas
- River restoration, flood protection and retention
- Nitrate project
- High intensive vegetable production



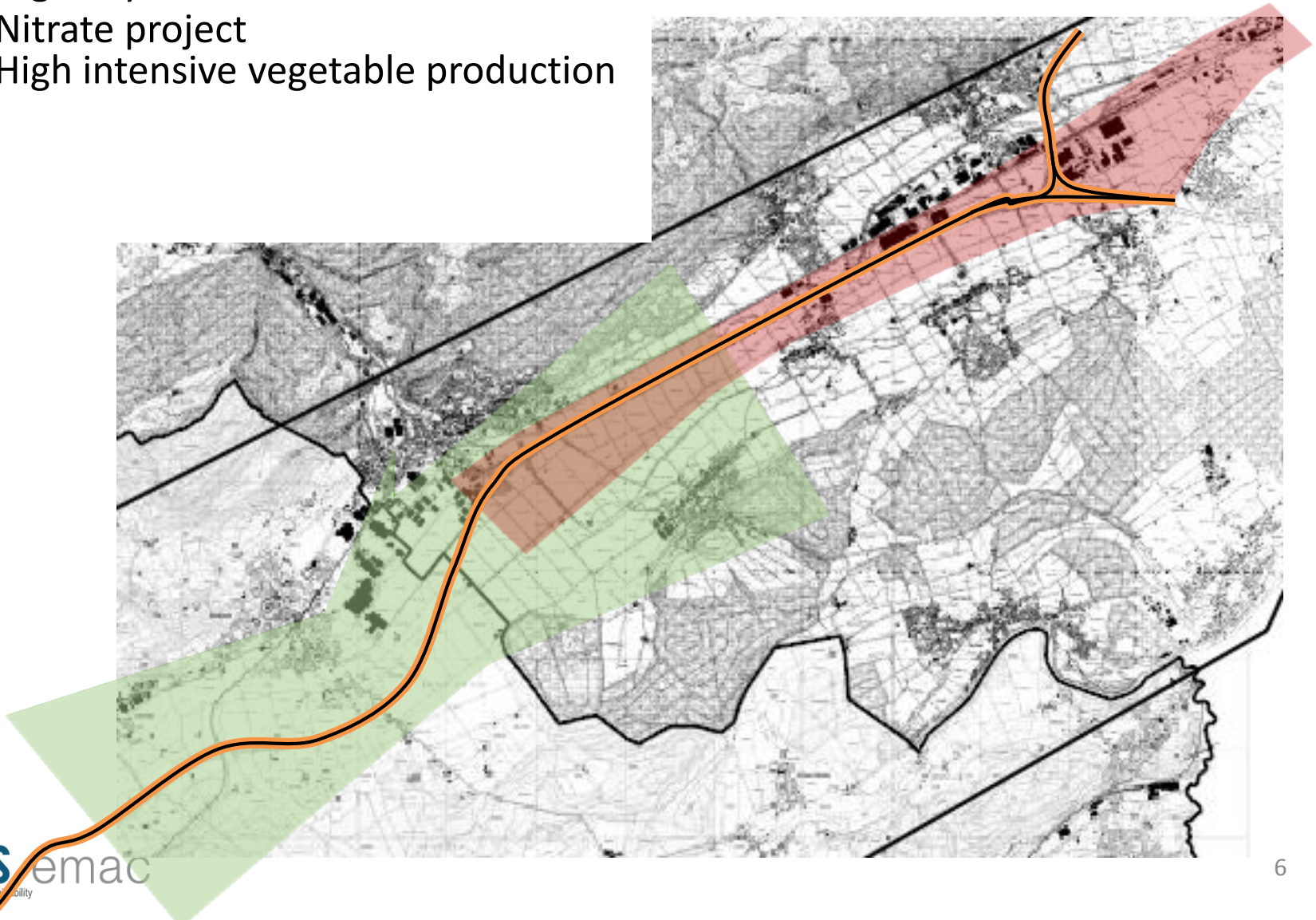
# Multiple and high land-use pressure

- Highway extension from 4 to 6 lanes
- Wildlife corridor
- Compensation of crop rotation areas = high value agricultural land



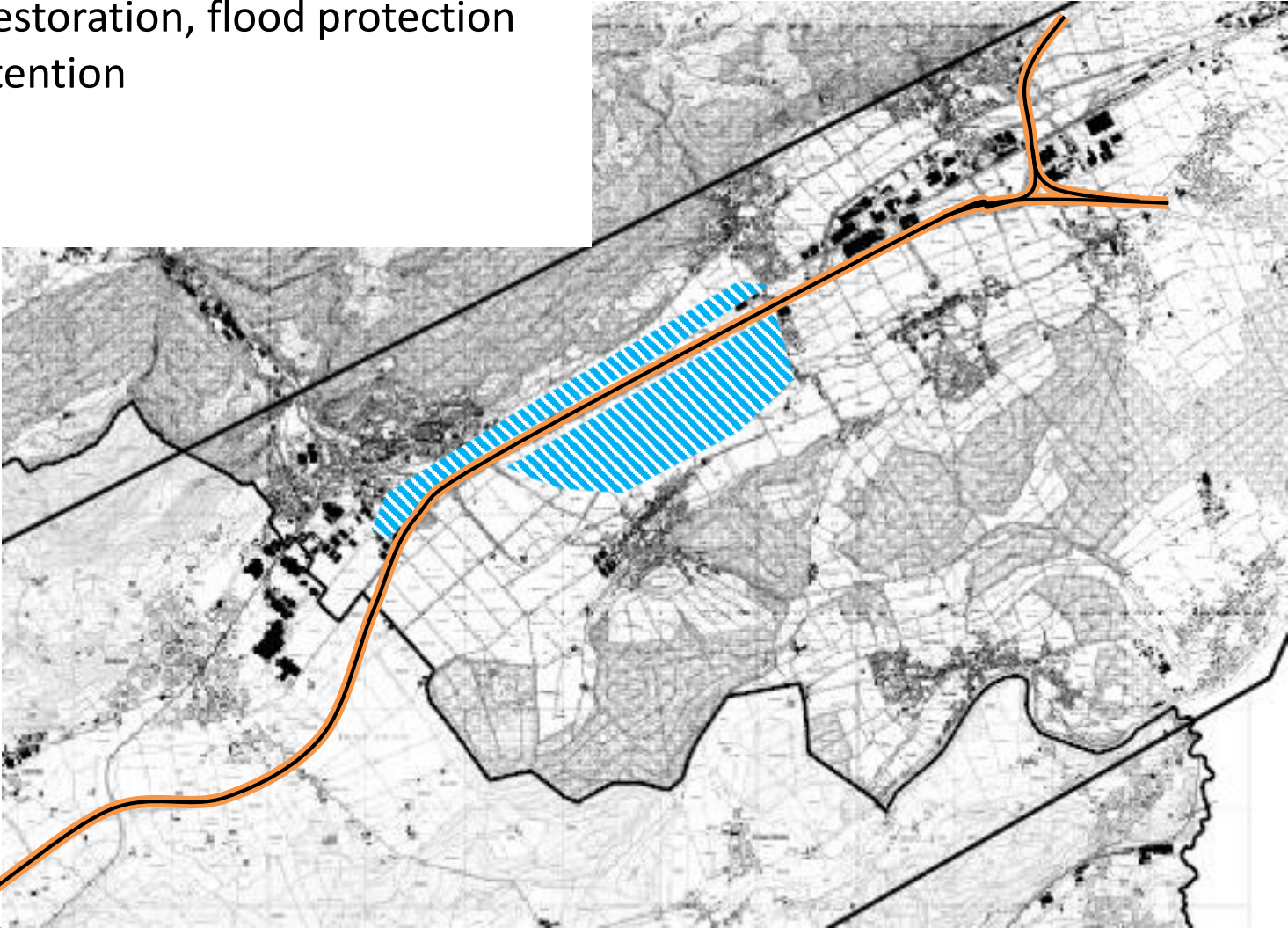
# Multiple and high land-use pressure

- Highway extension
- Nitrate project
- High intensive vegetable production



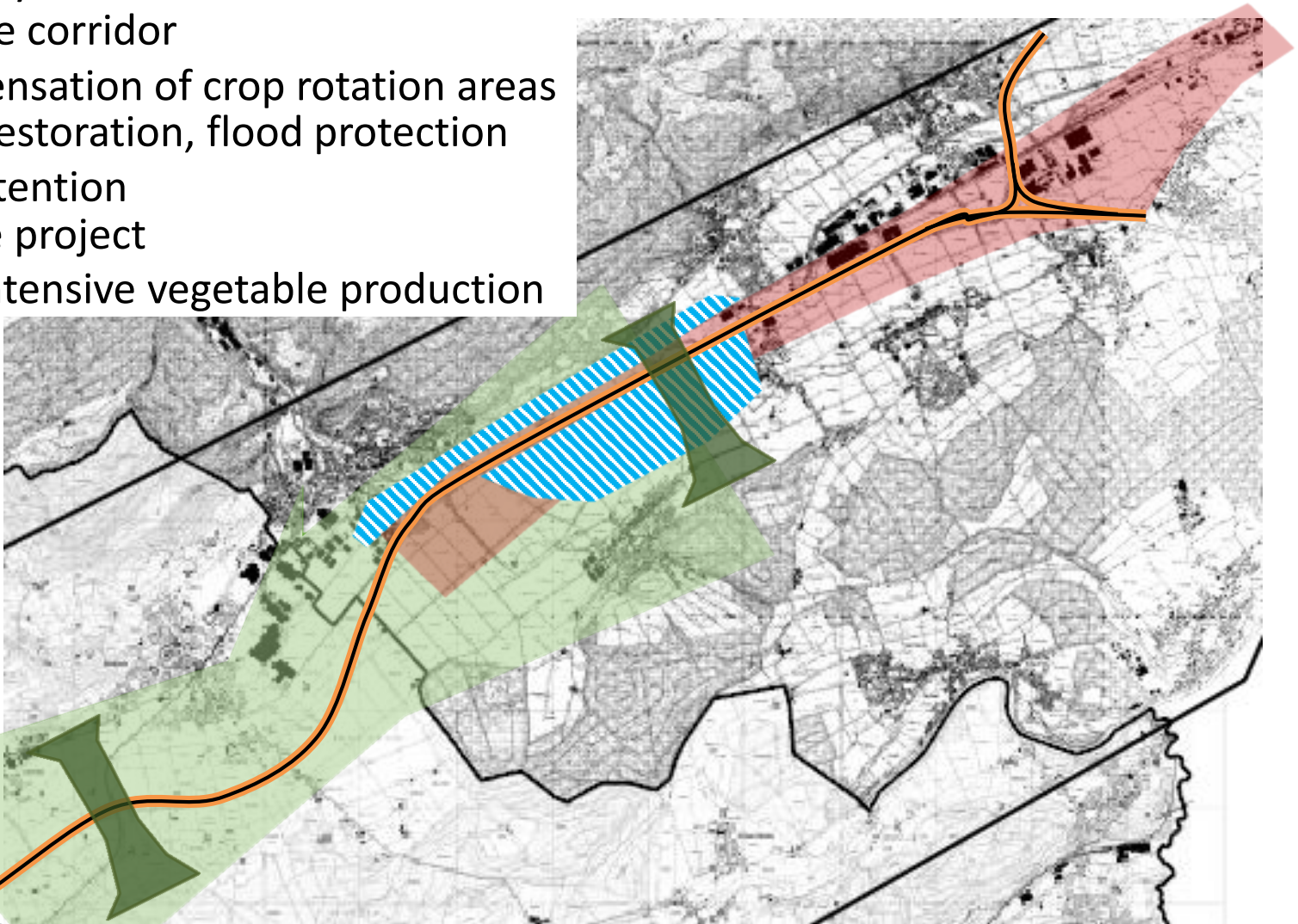
# Multiple and high land-use pressure

- Highway extension
- River restoration, flood protection and retention



# Multiple and high land-use pressure

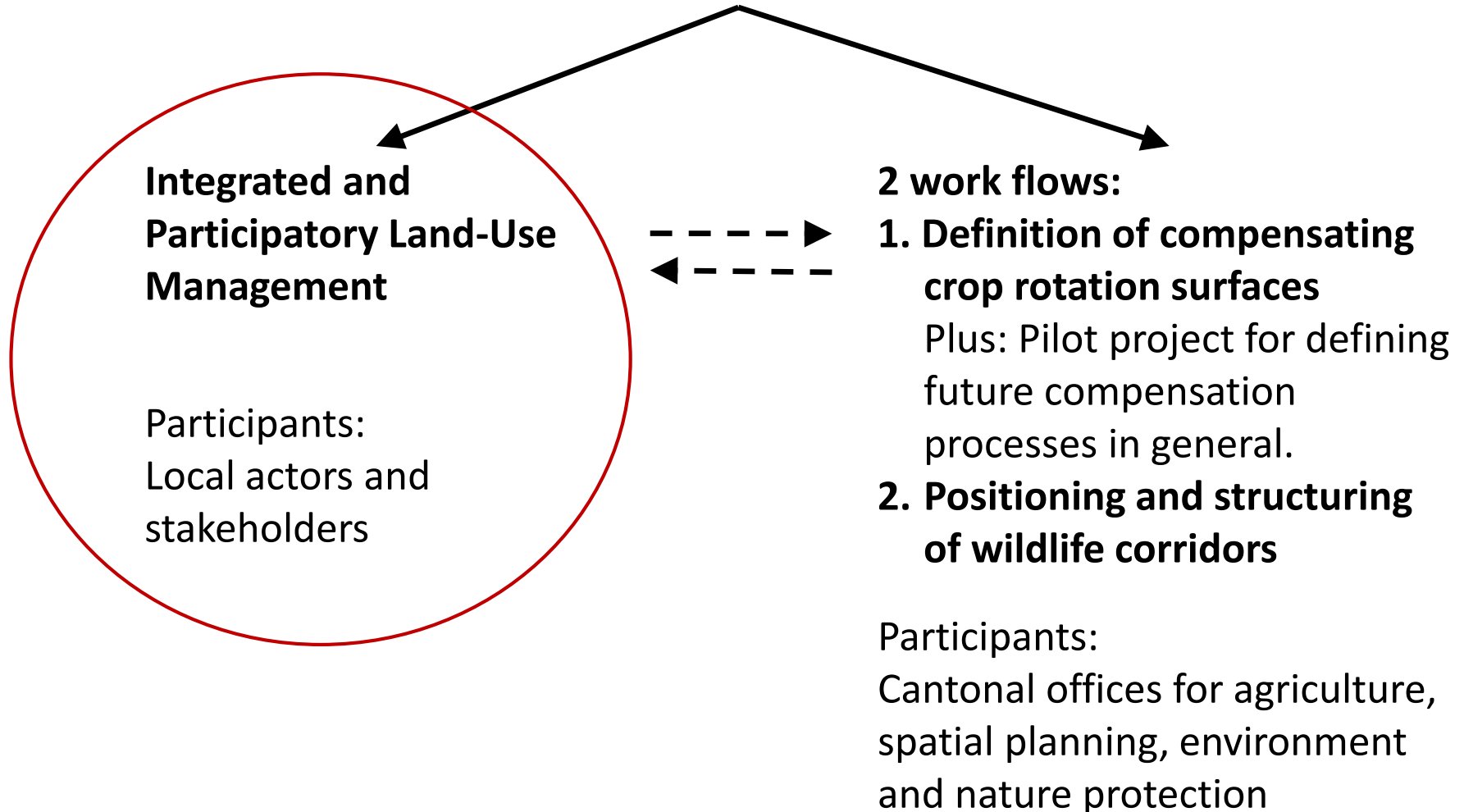
- Highway extension
- Wildlife corridor
- Compensation of crop rotation areas
- River restoration, flood protection and retention
- Nitrate project
- High intensive vegetable production





# How did we realize this collaborative approach?

## 2 combined approaches



# The Tool: Guideline for Integrated Participatory Land-Use Management

## Landwirtschaftliche Planung

Position und Entwicklung der Landwirtschaft im Zusammenhang mit raumrelevanten Vorhaben



## Wegleitung Landwirtschaftliche Planung

Position und Entwicklung der Landwirtschaft im Zusammenhang mit raumrelevanten Vorhaben



**German:** Landwirtschaftliche Planung

**English:** Integrated and Participatory Land-Use Management (IPLM)

**What it is:** A guideline for participatory planning, decision making and conflict resolution process

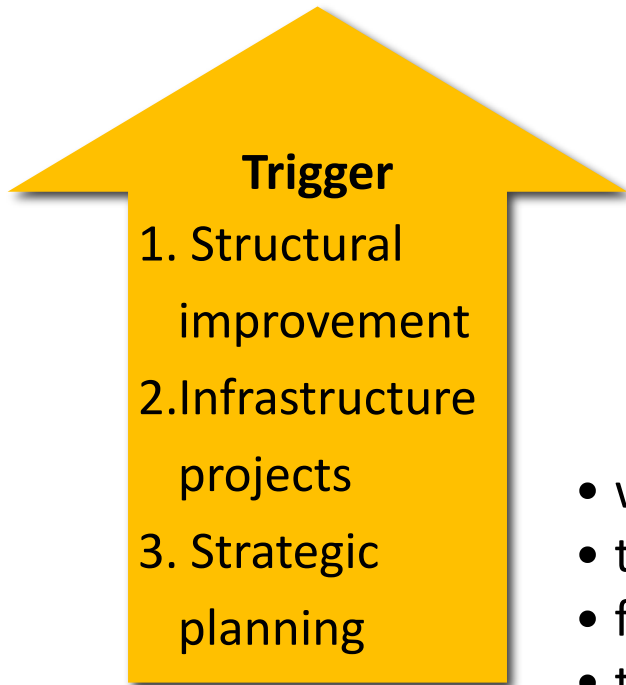
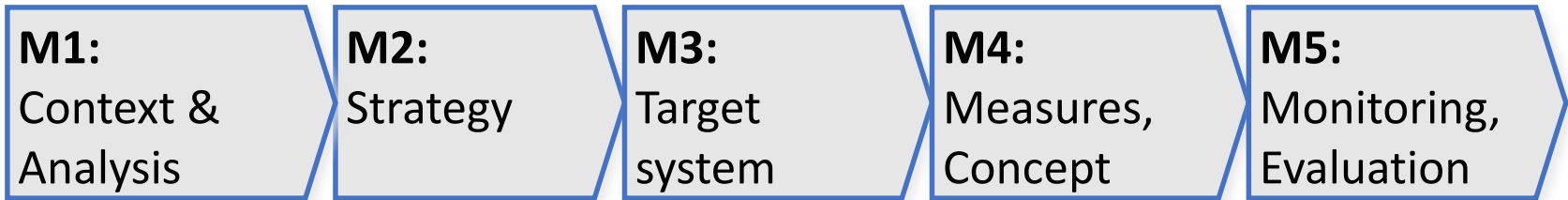
# Integrated and Participatory Land-Use Management (IPLM)



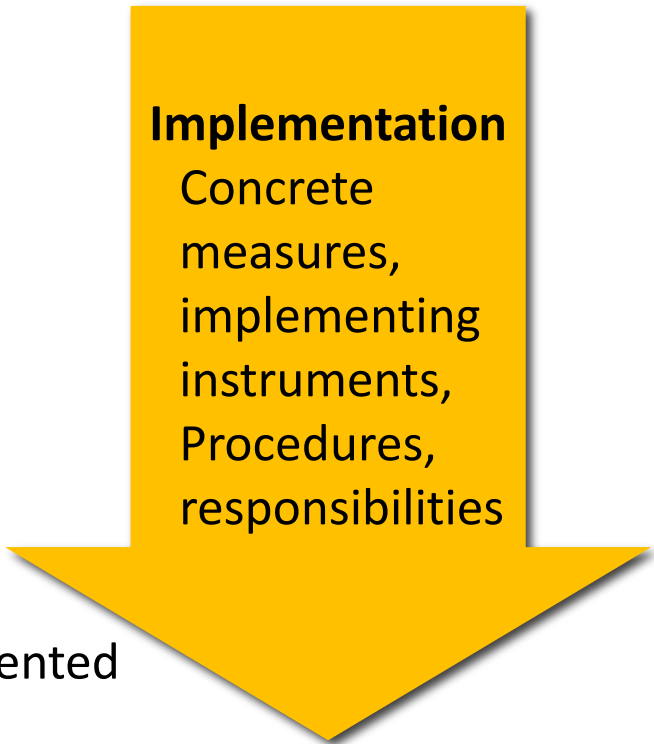
**Participatory planning is a core element!**



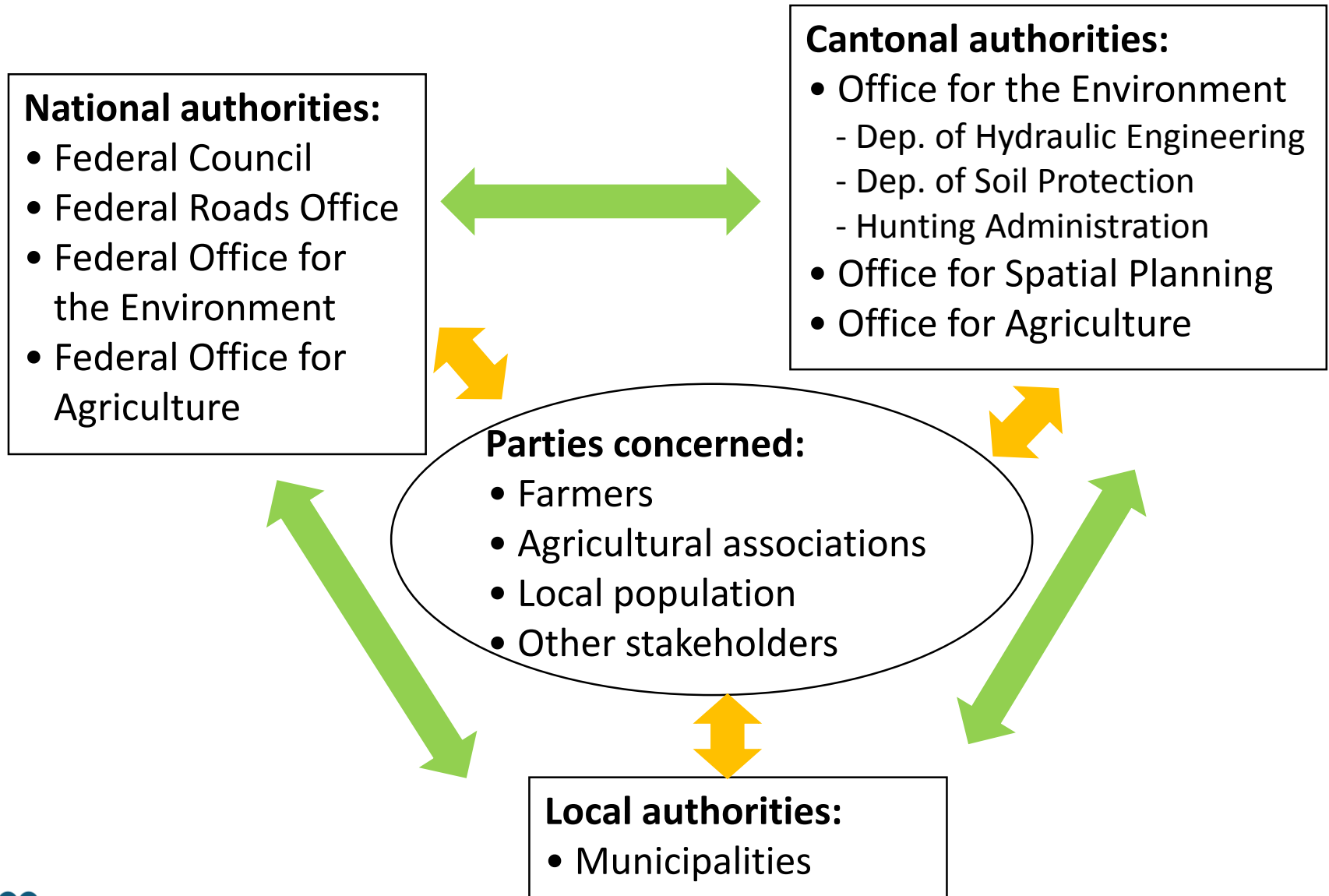
# Integrated and Participatory Land-Use Management (IPLM)



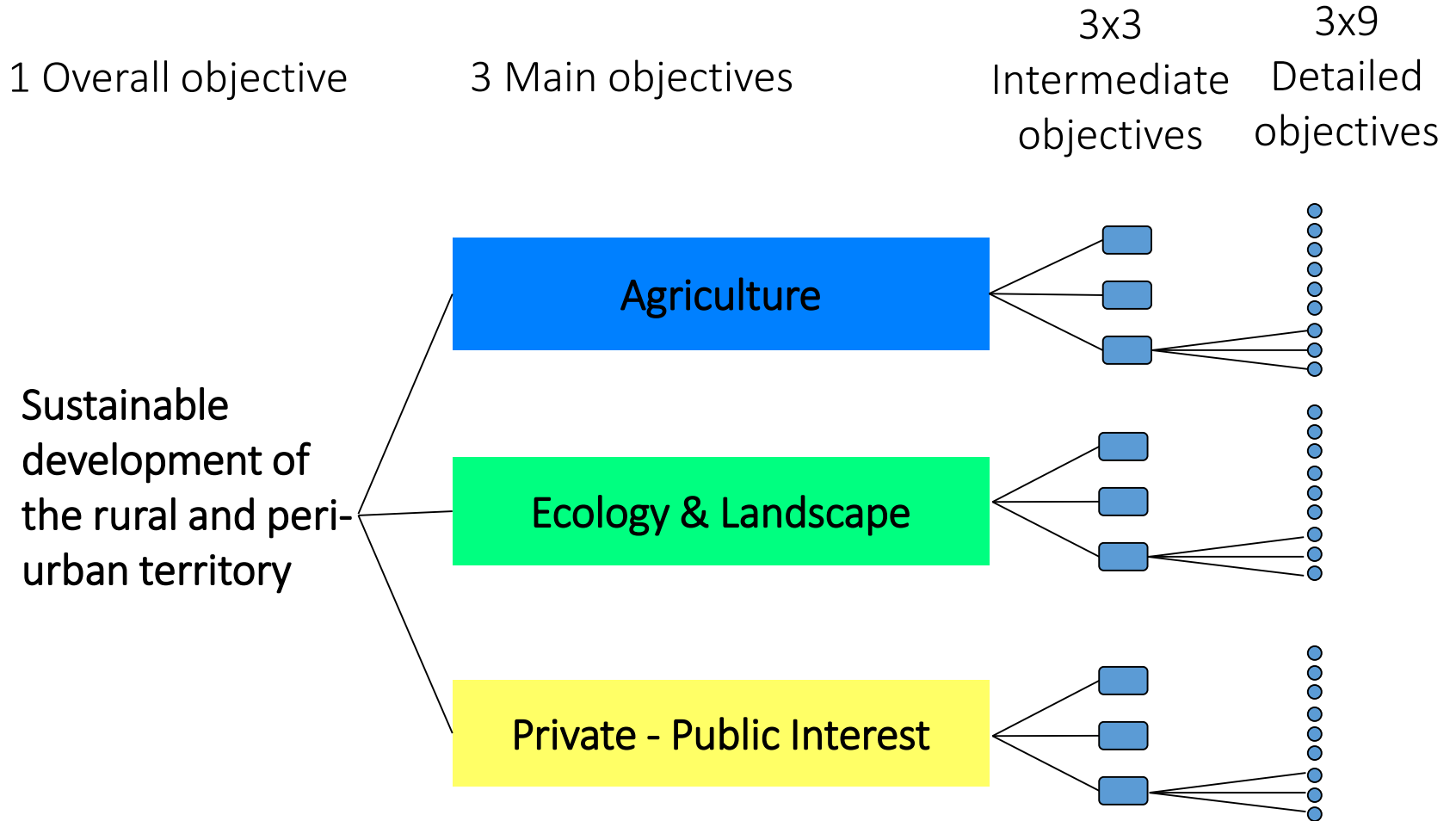
- well structured
- transparent
- flexible
- target and action-oriented



# Module 1: Context and Stakeholder Analysis



# Module 3: Target System and Target Weighting

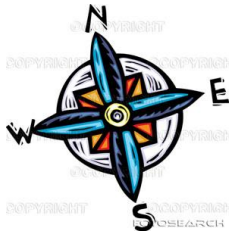


# What can be understood as the results of an IPLM?



... a **participatory planning and decision making process**

*... includes all the relevant actors and stakeholders*



... a **navigation tool for future orientation and development**

*... to better position and develop rural and also peri-urban areas*



... a tool to stimulate **innovation**

*... to recognize and mobilize present potential for future development*



... a **toolkit for preparing and implementing concrete measures**

*... to ensure that concrete projects are realized with the best suitable instruments*

# 3 Ongoing and interacting work streams

**Extensions: Compensation of crop rotation areas and ensure wildlife corridors**

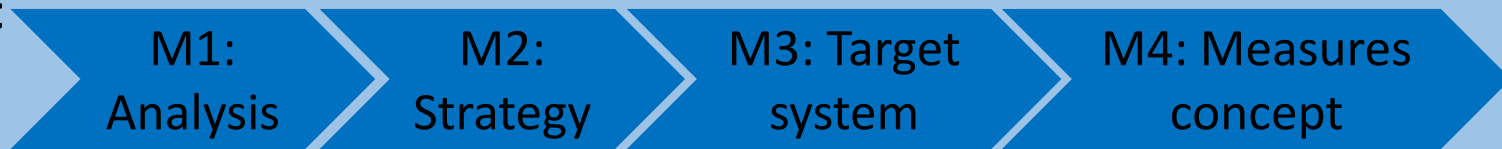


**Participatory Planning Process: Highway extension main project**



Coordination through advisory and monitoring group

**Participatory Planning Process: Hydraulic Engineering & Nitrate reduction project**



QIII / 2016

QIV / 2016

QI / 2017

QII / 2017

QIII / 2017

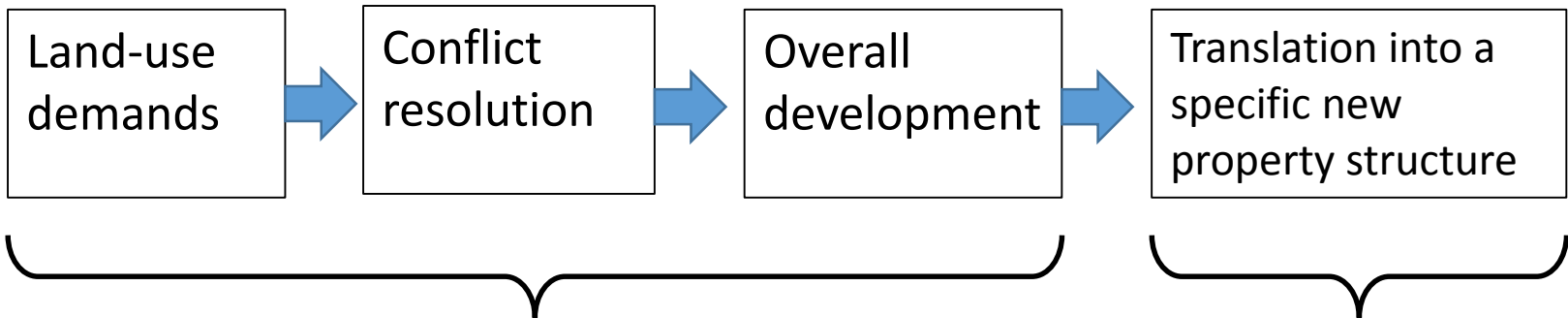
QIV / 2017

QI / 2018

QII / 2018



# Process from land-use demand to land administration



**Collaborative approach to develop land**  
through taking into account:

- Infrastructure project
- River training
- Groundwater protection
- Agriculture
- Ecological network
- Landscape protection

**Land administration**

- Integrated Land Consolidation
- Regional Development Projects
- Agricultural Adjustment Programs

Thank you for your  
attention!

