



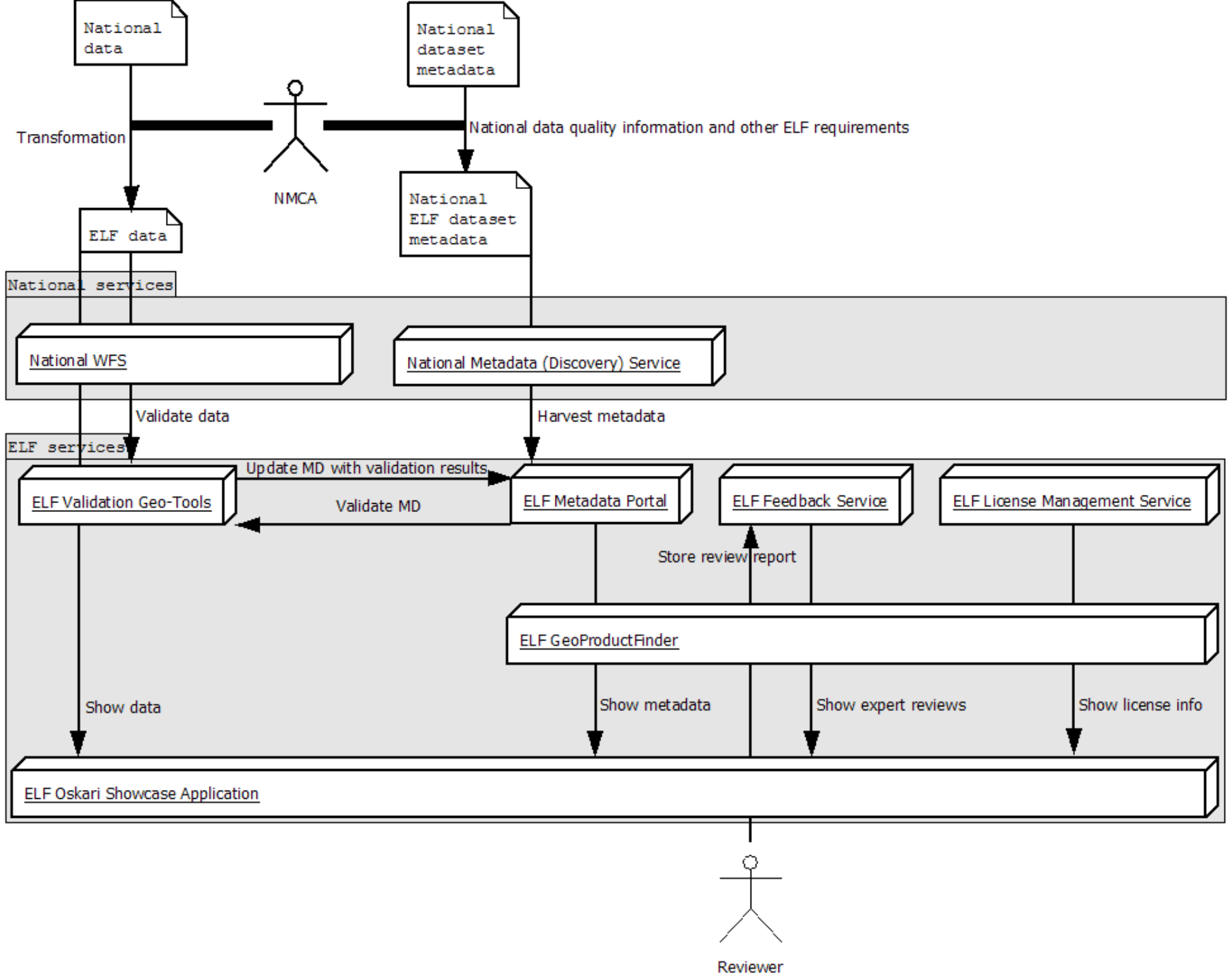
Quality information representation in ELF Geo Product Finder

Kai Koistinen

National Land Survey of Finland

ELF Geo Product Finder

- Main purpose of the Geo Product Finder application is to provide a user friendly interface to **find, compare** and **access** ELF data
- Data quality information is important in the process of finding and choosing datasets for user's purposes -> data quality has to be measured and reported and then represented to the GPF user





- SEARCH
- MAP LAYERS
- SELECTED LAYERS **1**
- MY DATA
- CREATE MAP
- MAP LEGENDS
- MAP USER GUIDE

Navigation icons: Home, Back, Forward, Search, Hand, WMS, WFS, Location pin, Link, Print, Share

Username

Password

Log in

English
[Change language](#)



Map navigation controls: Compass, Zoom in (+), Zoom out (-), Scale bar

N:	10730616
E:	-3805563

500 km
500 mi



- SEARCH
- MAP LAYERS
- SELECTED LAYERS 1
- MY DATA
- CREATE MAP
- MAP LEGENDS
- MAP USER GUIDE



Username

Password

Log in

English
[Change language](#)

Search

Places **Metadata Search**

Search metadata for datasets, dataset series or services.

Type the search term

Search

[Show search options](#)



N: 7805218
E: -3834915



- SEARCH
- MAP LAYERS
- SELECTED LAYERS 1
- MY DATA
- CREATE MAP
- MAP LEGENDS
- MAP USER GUIDE



Username

Password

Log in

English
[Change language](#)

Search

Places **Metadata Search**

Search metadata for datasets, dataset series or services.

[Show search options](#)



N: 7805218
E: -3834915



Search

SEARCH

MAP LAYERS

SELECTED LAYERS 1

MY DATA

CREATE MAP

MAP LEGENDS

MAP USER GUIDE



Username

Password

Log in

Places

Metadata Search

Search metadata for datasets, dataset series or services.

Type the search term

Search

[Hide search options](#)

Resource type

Dataset

Resource name

* No selection *

Responsible party

* No selection *

Keyword

* No selection *

Topic category

* No selection *

Metadata language

* No selection *

Resource language

* No selection *



N: 584671
E: -6574418



English
[Change language](#)

[Terms of Use](#) [Copyright](#)



- SEARCH
- MAP LAYERS
- SELECTED LAYERS 1
- MY DATA
- CREATE MAP
- MAP LEGENDS
- MAP USER GUIDE



Username
Password
Log in

English
[Change language](#)

Search

Places **Metadata Search**

Search metadata for datasets, dataset series or services.

geographical names

[Hide search options](#)

Resource type Dataset

Resource name * No selection *

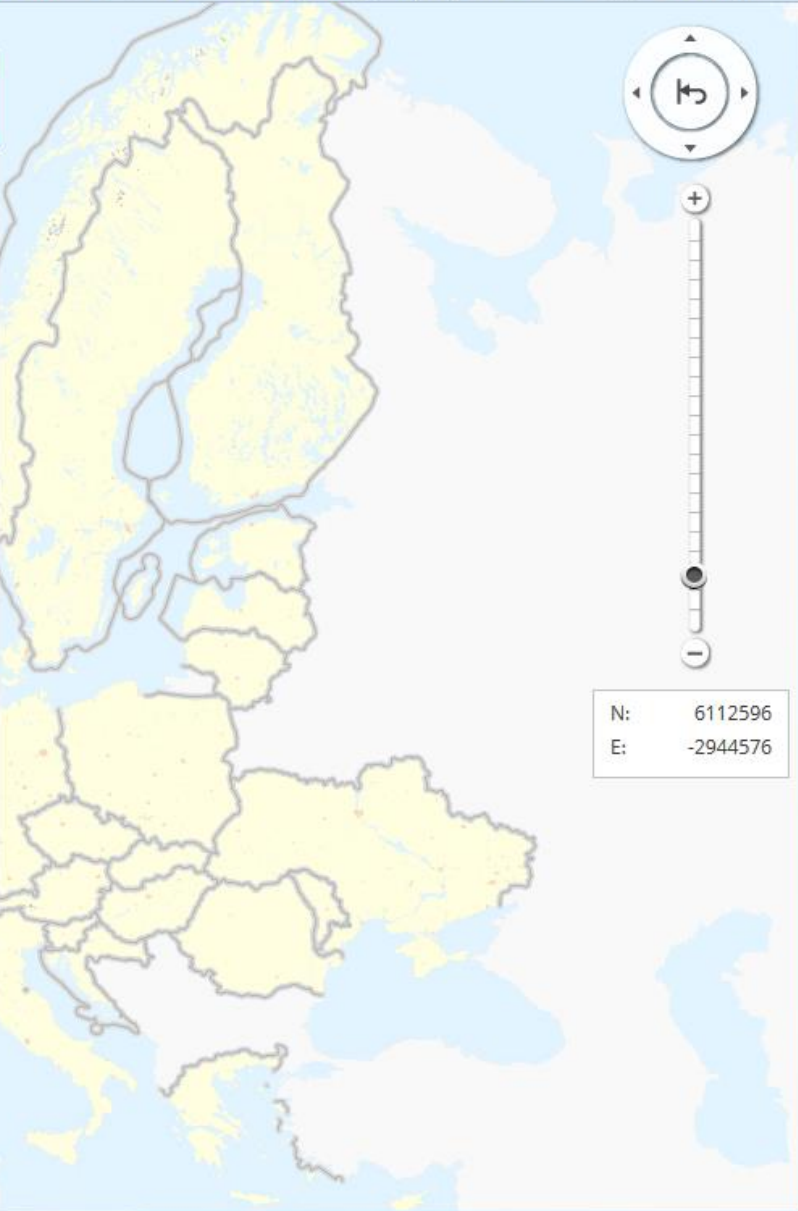
Responsible party * No selection *

Keyword * No selection *

Topic category * No selection *

Metadata language * No selection *

Resource language * No selection *





Search

- SEARCH
- MAP LAYERS
- SELECTED LAYERS 1
- MY DATA
- CREATE MAP
- MAP LEGENDS
- MAP USER GUIDE

Places Metadata Search

Search Results [Edit search options](#)

- Name**
- ELF Regional, EuroGeographics *(updated 2014-01-13)* ★★★★★ (21) [i](#) [x](#)
 - AU.AdministrativeBoundary [Show this map layer on the map.](#)
 - TN.RoadTransportNetwork.RoadLink [Show this map layer on the map.](#)
 - TN.RailTransportNetwork.RailwayLink [Show this map layer on the map.](#)
 - Geographic names, National Land Survey of Finland ★★★★★ (19) [i](#) [x](#)
 - GN Geographical Names - nls.fi [Show this map layer on the map.](#)

Navigation icons: Home, Back, Forward, Search, Hand, Layers, Full Screen, Print, Location, Link

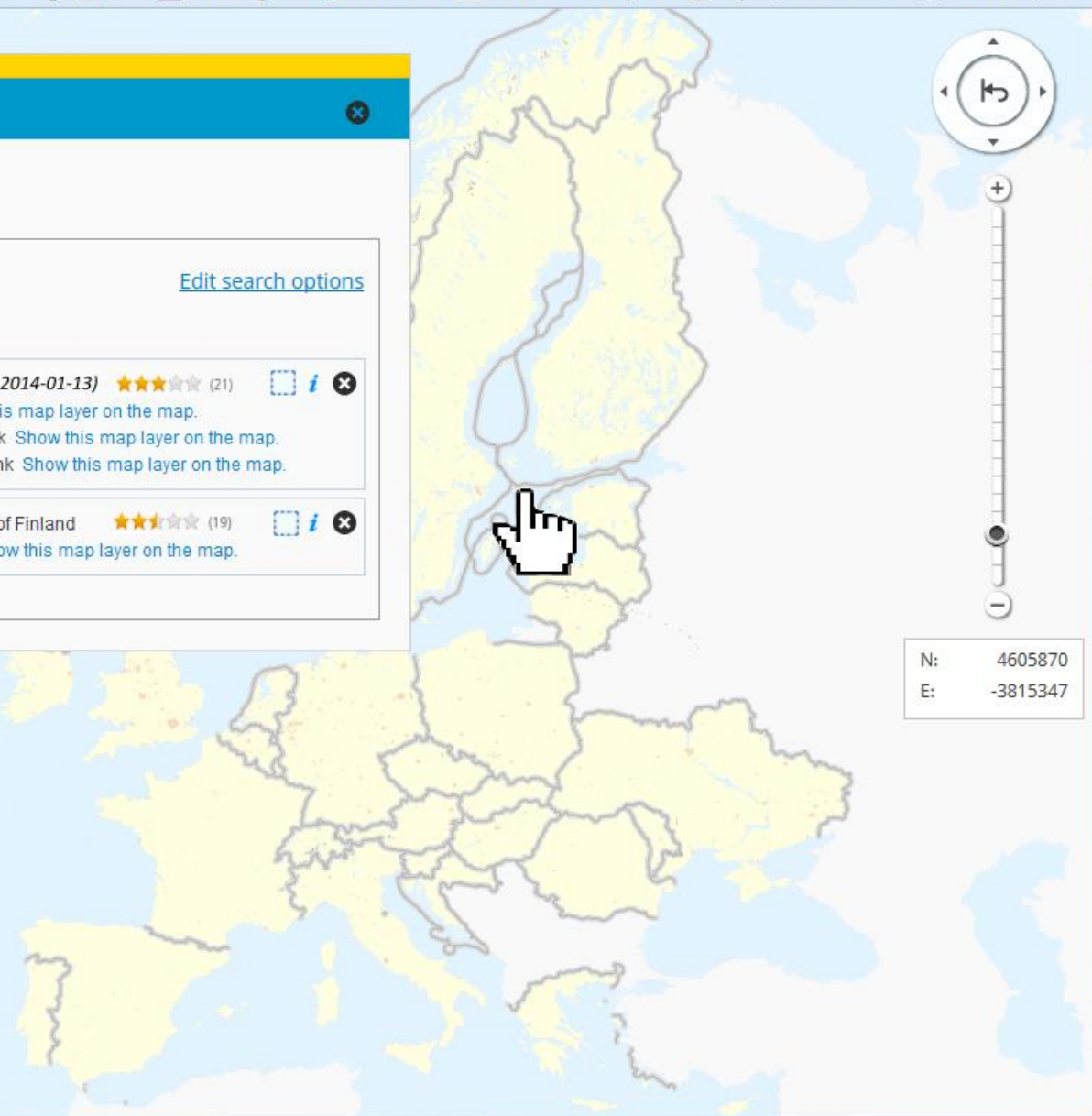
Username

Password

English [Change language](#)



[Terms of Use](#) [Copyright](#)



Map navigation controls: Compass, Zoom in (+), Zoom out (-), Scale bar

Coordinates: N: 4605870, E: -3815347



- SEARCH
- MAP LAYERS
- SELECTED LAYERS 1
- MY DATA
- CREATE MAP
- MAP LEGENDS
- MAP USER GUIDE



Username

Password

English
[Change language](#)

Search

Places **Metadata Search**

Search Results [Edit search options](#)

Name

ELF Regional, EuroGeographics *(updated 2014-01-13)* ★★★★★ (21) [i](#)

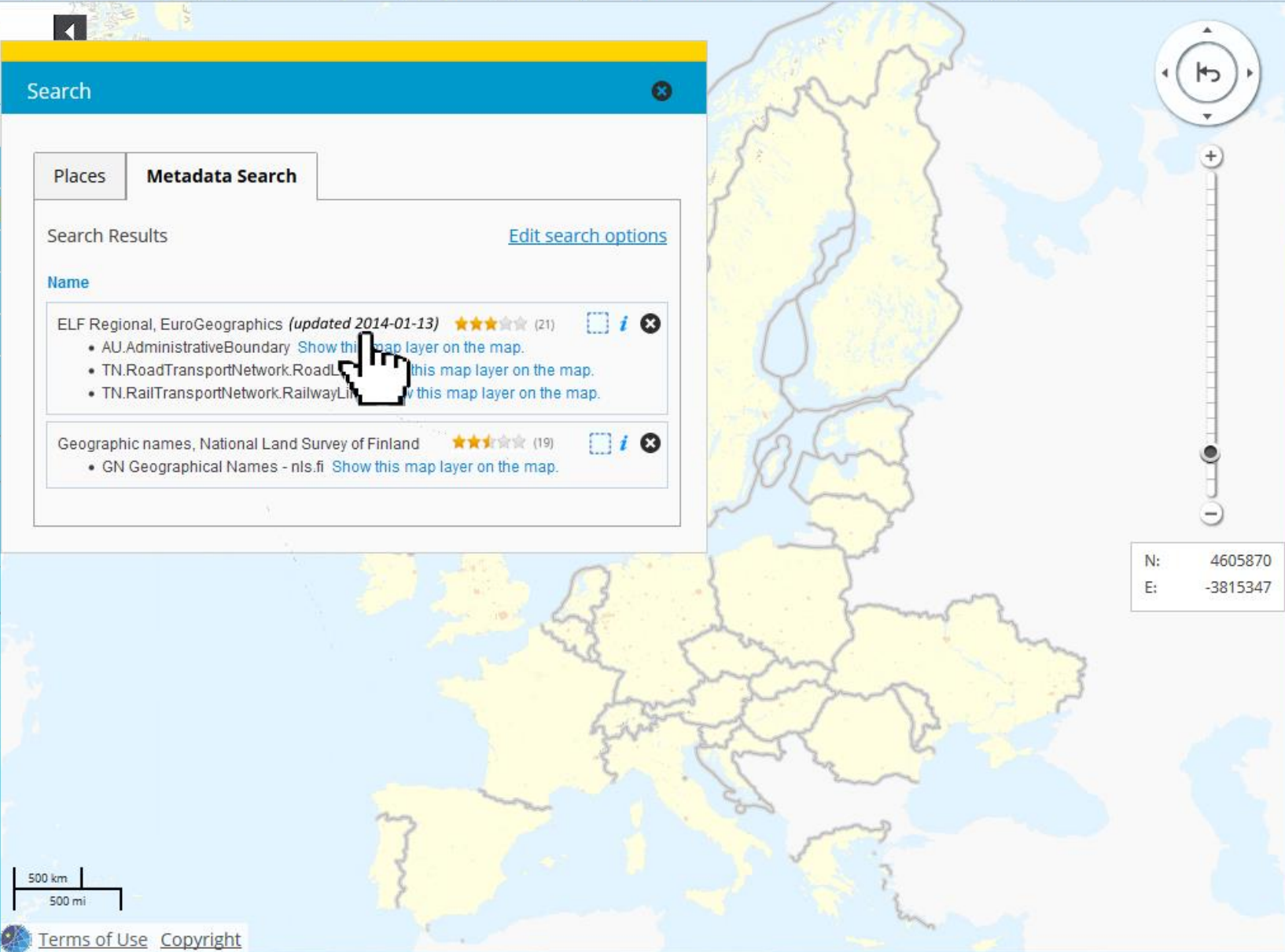
- AU.AdministrativeBoundary [Show this map layer on the map.](#)
- TN.RoadTransportNetwork.RoadLine [Show this map layer on the map.](#)
- TN.RailTransportNetwork.RailwayLine [Show this map layer on the map.](#)

Geographic names, National Land Survey of Finland ★★★★★ (19) [i](#)

- GN Geographical Names - nls.fi [Show this map layer on the map.](#)



N: 4605870
E: -3815347





Search

- SEARCH
- MAP LAYERS
- SELECTED LAYERS 1
- MY DATA
- CREATE MAP
- MAP LEGENDS
- MAP USER GUIDE

Places Metadata Search

Search Results [Edit search options](#)

- Name**
- ELF Regional, EuroGeographics *(updated 2014-01-13)* ★★★★★ (21) [i](#) [x](#)
 - AU.AdministrativeBoundary [Show this map layer on the map.](#)
 - TN.RoadTransportNetwork.RoadLink [Show this map layer on the map.](#)
 - TN.RailTransportNetwork.RailwayLink [Show this map layer on the map.](#)
 - Geographic names, National Land Survey of Finland ★★★★★ (19) [i](#) [x](#)
 - GN Geographical Names - nls.fi [Show this map layer on the map.](#)

Navigation icons: Home, Back, Forward, Search, Hand, Layers, Full Screen, Print, Location, Link

Username

Password

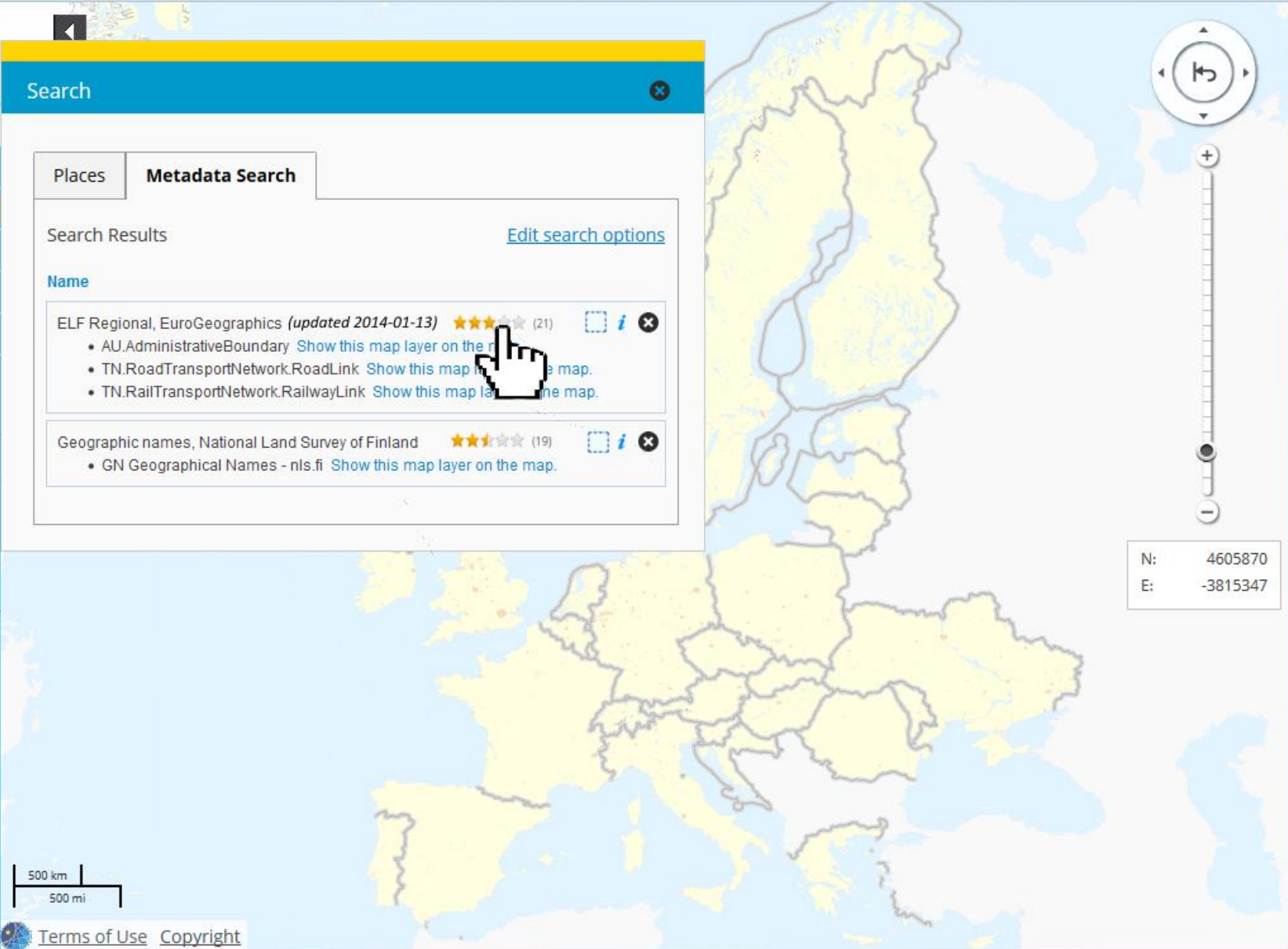
English [Change language](#)



[Terms of Use](#) [Copyright](#)

Map navigation controls: Compass, Zoom in (+), Zoom out (-), Scale bar

Coordinates: N: 4605870, E: -3815347





- SEARCH
- MAP LAYERS
- SELECTED LAYERS **1**
- MY DATA
- CREATE MAP
- MAP LEGENDS
- MAP USER GUIDE



Username

Password

Log in

English
Change language

Search

Places Metadata Search

Search Results [Edit search options](#)

- Name**
- ELF Regional, EuroGeographics *(updated 2014-01-13)* ★★★★★ (21)
 - AU.AdministrativeBoundary [Show this map layer on the map.](#)
 - TN.RoadTransportNetwork.RoadLink [Show this map layer on the map.](#)
 - TN.RailTransportNetwork.RailwayLink [Show this map layer on the map.](#)
 - Geographic names, National Land Survey of Finland ★★★★★ (19)
 - GN Geographical Names - nls.fi [Show this map layer on the map.](#)



User Feedback: ELF Regional

Subject:

Rating score:
★★★★★

Rating justification:

User Role:
Basic User

Comment:

DomainURN:
 +

Add the relevant scientific domains and themes

Tags:





Search

- SEARCH
- MAP LAYERS
- SELECTED LAYERS **1**
- MY DATA
- CREATE MAP
- MAP LEGENDS
- MAP USER GUIDE

Places Metadata Search

Search Results [Edit search options](#)

- Name**
- ELF Regional, EuroGeographics *(updated 2014-01-13)* ★★★★★ (21)
 - AU.AdministrativeBoundary [Show this map layer on the map.](#)
 - TN.RoadTransportNetwork.RoadLink [Show this map layer on the map.](#)
 - TN.RailTransportNetwork.RailwayLink [Show this map layer on the map.](#)
 - Geographic names, National Land Survey of Finland ★★★★★ (19)
 - GN Geographical Names - nls.fi [Show this map layer on the map.](#)

Navigation icons: Home, Back, Forward, Search, Hand, Layers, Full Screen, Print, Location, Link

Username

Password

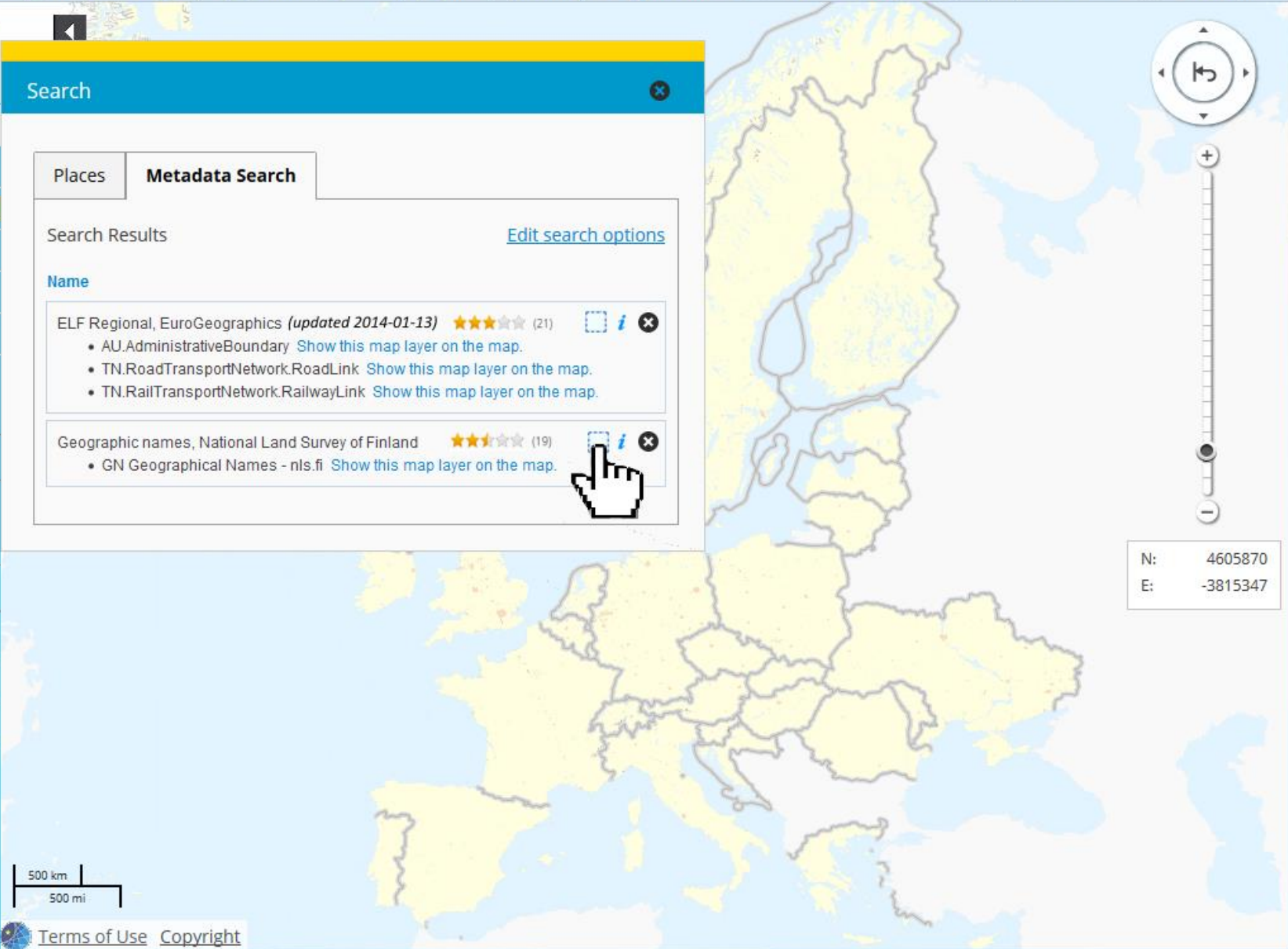
English [Change language](#)



[Terms of Use](#) [Copyright](#)

Map navigation controls: Compass, Zoom in (+), Zoom out (-), Scale bar

Coordinates: N: 4605870, E: -3815347





Search

- SEARCH
- MAP LAYERS
- SELECTED LAYERS 1
- MY DATA
- CREATE MAP
- MAP LEGENDS
- MAP USER GUIDE

Places Metadata Search

Search Results

[Edit search options](#)

Name

- ELF Regional, EuroGeographics *(updated 2014-01-13)* ★★★★★ (21) ☐ i ✕
 - AU.AdministrativeBoundary [Show this map layer on the map.](#)
 - TN.RoadTransportNetwork.RoadLink [Show this map layer on the map.](#)
 - TN.RailTransportNetwork.RailwayLink [Show this map layer on the map.](#)
- Geographic names, National Land Survey of Finland ★★★★★ (19) ☐ i ✕
 - GN.Geographical Names - nls.fi [Show this map layer on the map.](#)

Navigation icons: Home, Back, Forward, Search, Hand, Layers, Full Screen, Print, Share, Link

Username

Password

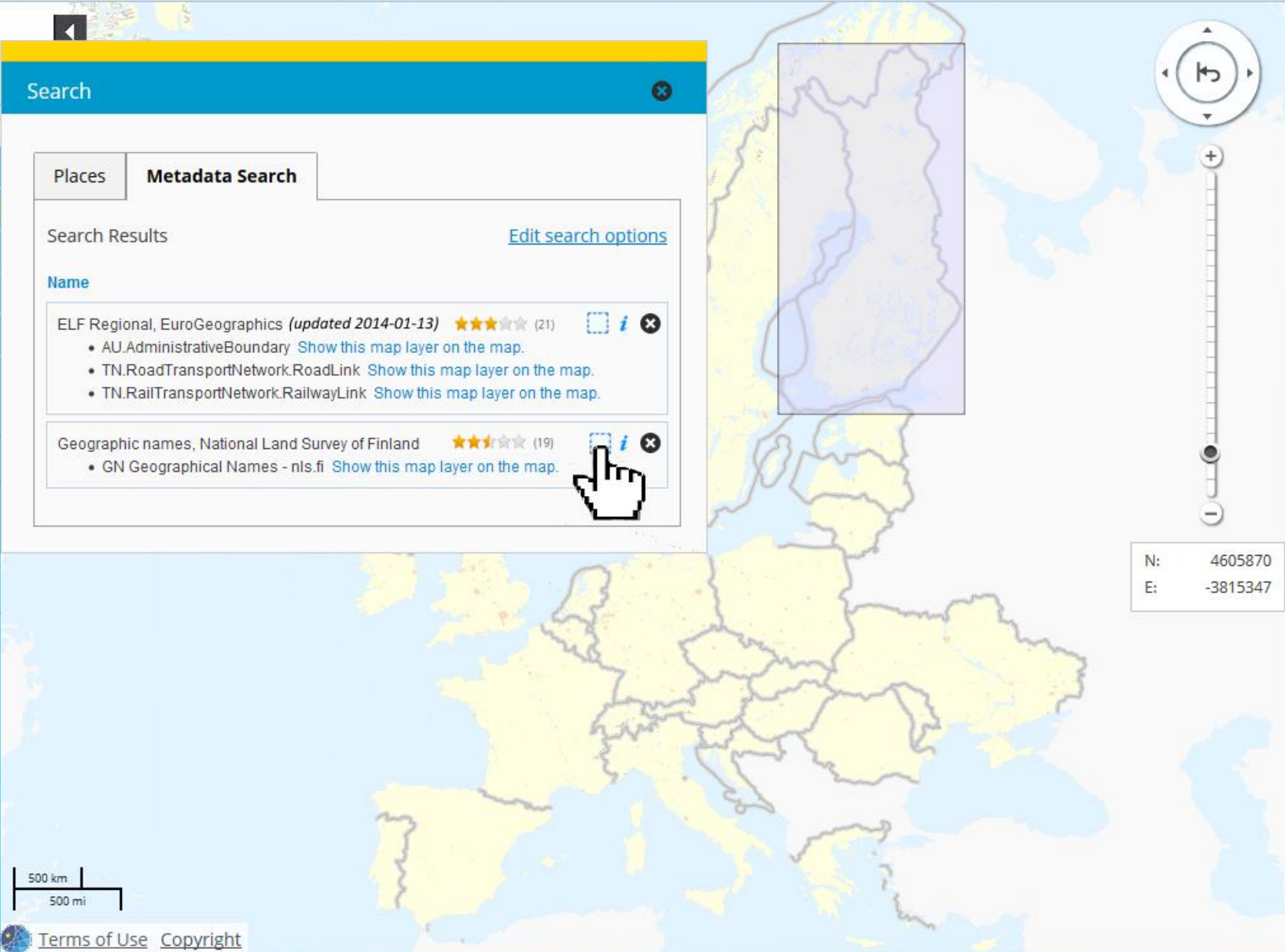
English [Change language](#)



[Terms of Use](#) [Copyright](#)

Map navigation controls: Compass, Zoom in (+), Zoom out (-), Scale bar

Coordinates: N: 4605870, E: -3815347





Search

- SEARCH
- MAP LAYERS
- SELECTED LAYERS 1
- MY DATA
- CREATE MAP
- MAP LEGENDS
- MAP USER GUIDE

Places Metadata Search

Search Results

[Edit search options](#)

Name

- ELF Regional, EuroGeographics *(updated 2014-01-13)* ★★★★★ (21) [i](#) [x](#)
 - AU.AdministrativeBoundary [Show this map layer on the map.](#)
 - TN.RoadTransportNetwork.RoadLink [Show this map layer on the map.](#)
 - TN.RailTransportNetwork.RailwayLink [Show this map layer on the map.](#)
- Geographic names, National Land Survey of Finland ★★★★★ (19) [i](#) [x](#)
 - GN Geographical Names - nls.fi [Show this map layer on the map.](#)



Navigation icons: Home, Back, Forward, Search, Hand, Print, Full Screen, Location, Link

Username

Password

English [Change language](#)



[Terms of Use](#) [Copyright](#)

Map navigation controls: Compass, Zoom in (+), Zoom out (-), Scale bar

Coordinates: N: 4605870, E: -3815347





- SEARCH
- MAP LAYERS
- SELECTED LAYERS 1
- MY DATA
- CREATE MAP
- MAP LEGENDS
- MAP USER GUIDE



Username

Password

Log in

Search

Metadata

Geographic names

Basic information ISO 19115 metadata Inspire metadata Quality Feedback

[ISO 19139 XML file](#) [Printout](#)

GEOGRAPHIC NAMES

ABSTRACT TEXT (DATA)

The geographic names products comprise of place name products and map name products.

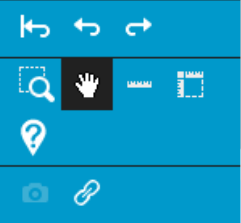
The place name dataset comprises approximately 800 000 natural and cultural names whose spelling has been checked by the Institute for the Languages of Finland. In addition to the correct spelling of place names, the dataset provides the following particulars: the language in which the place name has been written (Finnish, Swedish, North Saami, Inari Saami or Skolt Saami), the status of the language of the name in the municipality in which the place is located and the type of place the name refers to. The location of the place is given as coordinates that indicate the midpoint of the place (in case of rivers, the coordinates point to the mouth of the river). In case of a place name dataset, each place and its name or names appear only once.

The map name dataset is comprised of the place names selected for different map products and the information for their cartographic presentation. In addition to the data available in the place name dataset, the map name dataset includes the location of the place name on map, its direction and its typographical information, such as typeface and type size. In case of map names, the name of a particular





- SEARCH
- MAP LAYERS
- SELECTED LAYERS 1
- MY DATA
- CREATE MAP
- MAP LEGENDS
- MAP USER GUIDE



Username

Password

Log in

Search

Metadata

Geographic names

Basic information | ISO 19115 metadata | Inspire metadata | **Quality** | Feedback

[ISO 19139 XML file](#) [Printout](#)

GEOGRAPHIC NAMES

LINEAGE STATEMENT

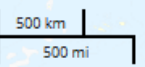
The geographic names products are based on the place names of Basic map that have been checked by the Institute for the Languages of Finland.

DATE

2000-01-01 (Creation)

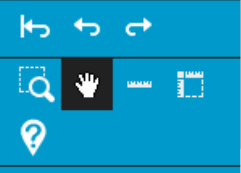
CONFORMANCE

Information product specification: Elevation, COMMISSION REGULATION (EU) No 1089/2010





- SEARCH
- MAP LAYERS
- SELECTED LAYERS 1
- MY DATA
- CREATE MAP
- MAP LEGENDS
- MAP USER GUIDE



Username

Password

Log in

Search

Metadata

Geographic names

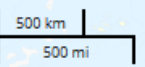
Basic information ISO 19115 metadata Inspire metadata Quality Feedback [ISO 19139 XML file](#) [Printout](#)

GEOGRAPHIC NAMES

FEEDBACK TITLE 1
★☆☆☆☆
Comments...

FEEDBACK TITLE 2
★☆☆☆☆
Comments...

FEEDBACK TITLE 3
★☆☆☆☆
Comments...





Thanks for your attention!