

An aerial photograph of a forest with a central lake. The forest is in autumn, with trees showing yellow, orange, and green foliage. A white geometric overlay, consisting of a network of lines forming various polygons, is superimposed on the right side of the image, extending from the top right corner towards the center. The lake is a deep blue color.

Users of Pan-European Data

Abigail Page
Product Development Manager
EuroGeographics Head Office

Agenda -

- About EuroGeographics
- The need for pan-European authoritative Data
- Introduction to EuroGeographics' Data Products and Services
- Developing a User centred Approach
- Conclusions

The voice of European National Mapping, Cadastral & Land Registry Authorities

63 
members

46 
countries

from the whole of geographical Europe

Members invest over

€1.5B 
each year in the
development of
geo-information

Relied on by
European
Commission
Businesses
& Citizens



Share best practice
through
expert
knowledge
exchange
networks

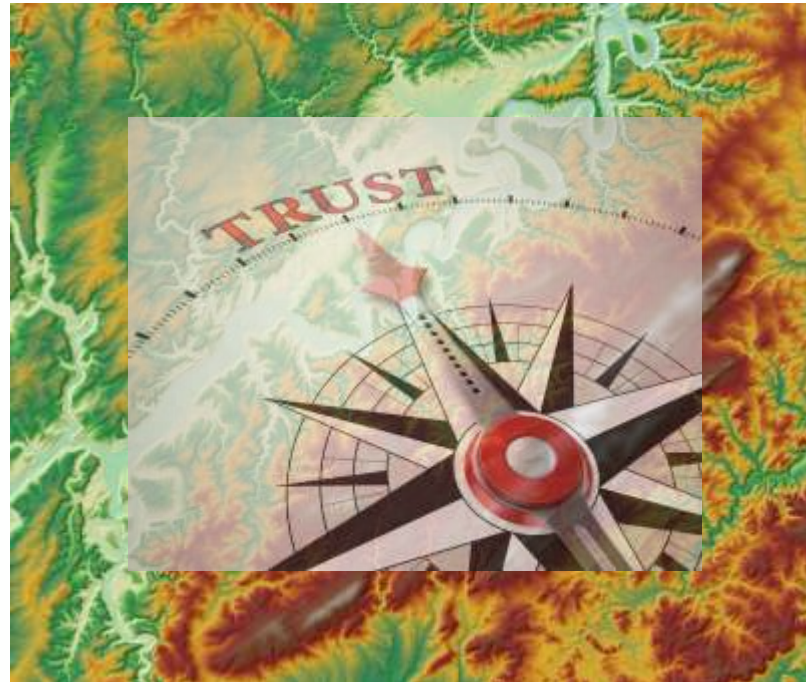


66,000
people and
over are
employed by
EuroGeographics members



Our vision

A society empowered by the use of our members' authoritative geospatial services



Facilitating access to your data

OpenELS | HOME ABOUT PRODUCTS EVENTS LATEST HELP/DESK

OPEN EUROPEAN LOCATION SERVICES

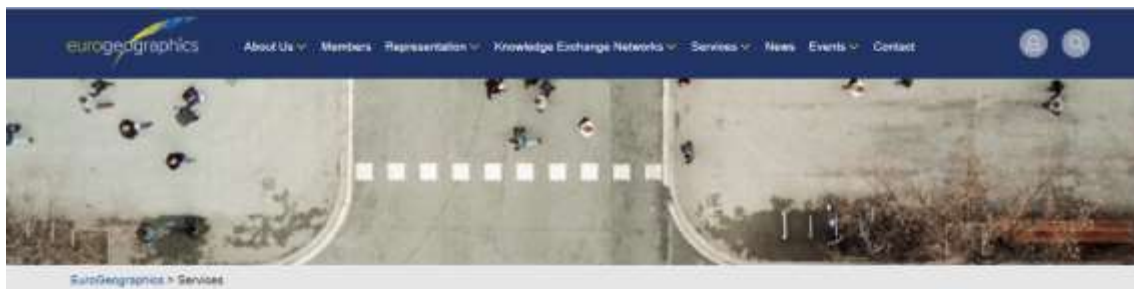
European open geospatial data services from official national sources

- OpenELS is a core component of EuroGeographics' wider vision for operational European Location Services.
- It complements the national activities of members and will respect national policy, legislative and business requirements.
- It aims to provide user-focused services using open geospatial data which is already available from members.

European Location Services

Products & Users





Services

European geospatial information from official sources

EuroGeographics offers four European geospatial data products. Each is produced using official geospatial data from our members, the National Mapping, Cadastre and Land Registry Authorities.

Our products are harmonised to standard specifications, so users can be confident that the information provided is consistent, comparable and easily shared – regardless of its national source. The data is updated annually and can be used in a wide range of applications including analysis, planning and research.

We offer standardised, transparent pricing and licensing [link to licences](#) agreements, including an [open data link](#) licence for our 1:1 million scale European topographic dataset, EuroGlobalMap. Read our Data Policy <http://www.eurogeographics.org/sites/default/files/20100128_EuroGeographics%20Data%20Policy_V1.1.pdf>

[Back to top](#) ↑

eurogeographics

CONNECTING YOU TO MAPS,
GEOSPATIAL AND LAND
INFORMATION FOR EUROPE.

Navigate

Home
About Us
Members
Representation
Knowledge Exchange Networks

Services
News
Events
Contact

Contact

e: info@eurogeographics.org
t: [+32 \(0\) 2 888 71 19](tel:+3228887119)
EuroGeographics AISBL
Head Office
Rue du Nord 76/Noordstraat 76
1000 Brussels
BELGIUM



EBM

EuroBoundaryMap is a seamless geo-database at the scale 1:100 000 covering 55 countries (according to ISO country code and Kosovo) from 39 data producers. It contains geometry, names and codes of administrative and statistical units continuously updated by our members, the national mapping and cadastral authorities (NMCA) of Europe. It links to the updated statistical LAU- and NUTS-codes for all local administrative units of the 28 member states of the European Union.



Basic information

Current version	v11
Release date	January 2017
Nominal scale	1:100 000
Coordinate system	Geographical in degrees (longitude, latitude) with decimal fraction and based on the ETRS89 spatial reference system
Database structure	The geometry of administrative units at most detailed level is stored in a data layer. The boundaries, administrative units on upper hierarchical level and statistical regions are provided as additional layers. Attributive information is stored in linked tables.

EuroGeographics products

Current products

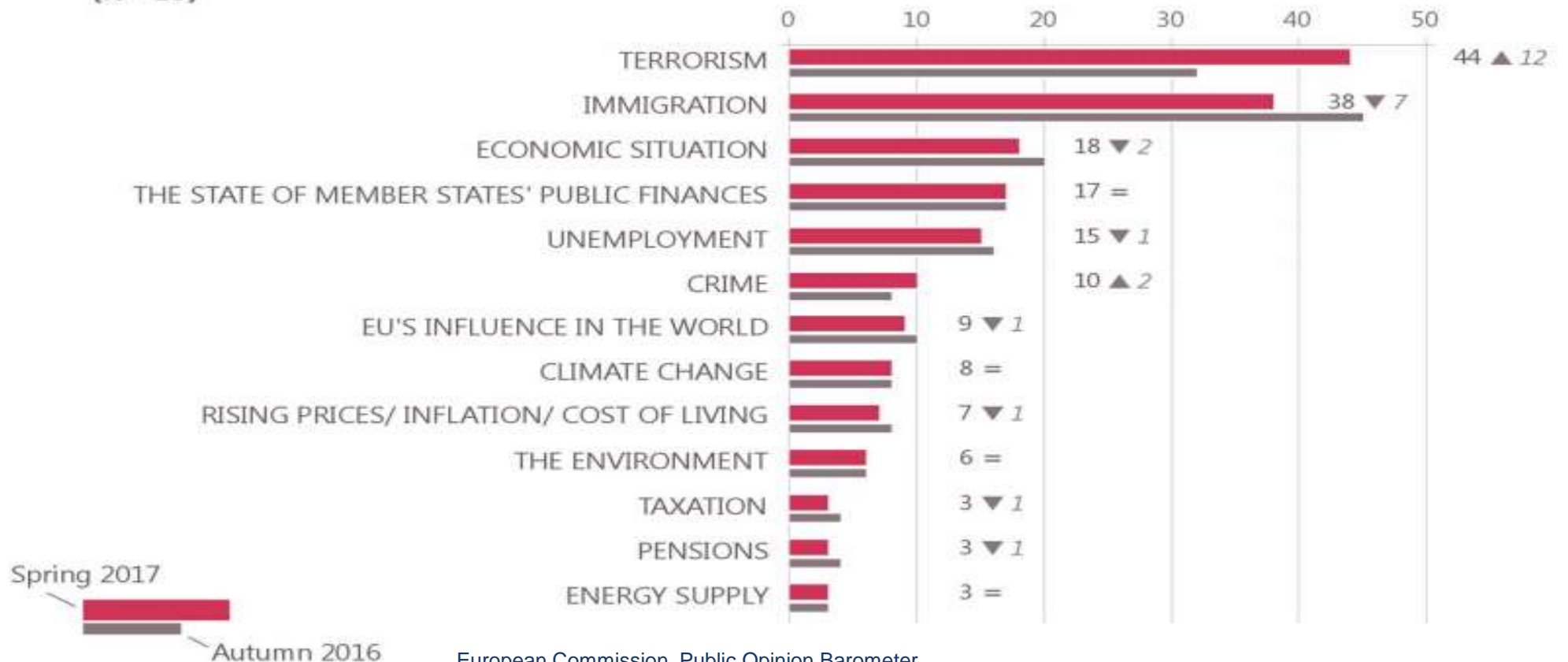
- ERM
- EBM
- EGM
- EuroDEM

Core Reference Data (CRD) prototype development

European Location Services (ELS) programme

Challenges Beyond Boundaries !

QA5 What do you think are the two most important issues facing the EU at the moment?
(% - EU)



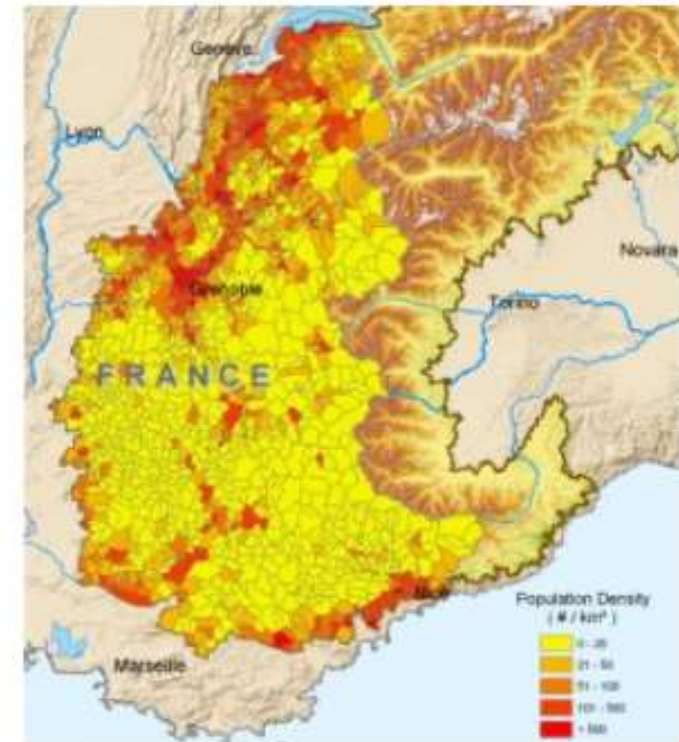
Case Studies

Alpine Convention

The Alps are considered as one of the most sensitive regions in Europe. To ensure the sustainable development of this unique area, seven Alpine States and the EU signed the **Alpine Convention** in 1991.

Since the adoption of the **European Spatial Development Perspective** in 1999 regional policy focuses increasingly on a coherent economic and social development, on the conservation of natural and cultural diversity and on a balanced competitiveness of the regions.

The **DIAMONT** project, managed by the **European Academy**, uses **EuroBoundaryMap** to advise the Alpine Convention on the elaboration of an Alpine wide information system (**SOIA**) and the selection of appropriate indicators and relevant data for **sustainable regional development**.



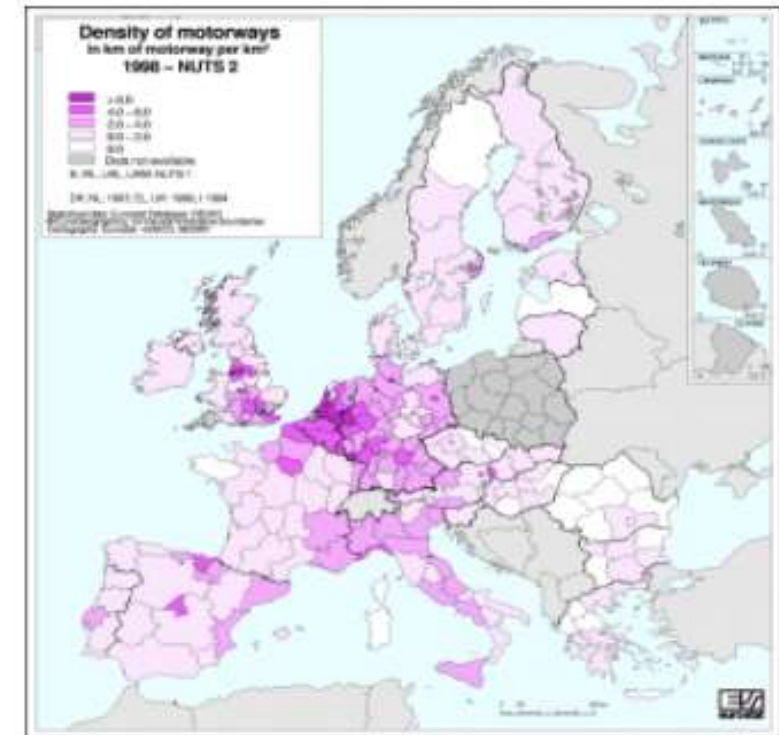
Case Studies

Eurostat

As the European Commission's statistical office, **Eurostat** collects, processes and distributes European **economic, geo-demographic and social information** on all EU and candidate countries.

They provide their customers with easy and rapid access to comparable statistics. To achieve this they use **EuroBoundaryMap, mapping their NUTS based statistics to the administrative units in Europe.**

All this information is made available to the different Commission's departments for a variety of purposes, such as the management of the structural funds, worth € 195 Billion in the period 2000 – 2006.



Case Studies

NAVTEQ

NAVTEQ is one of the world's leading producers of digital road data. Its data is found in many in-car navigation systems.

NAVTEQ digital map data does not just feature road geometry. It contains dozens of road attributes for every kilometer, everything from speed restrictions to lane configurations – in **more than 40 countries**. And it also offers millions of Points of Interest, so it enables turn-by-turn directions to restaurants, fuel stations, shopping and more.

NAVTEQ uses **EuroBoundaryMap's** administrative boundaries to reference their road data.

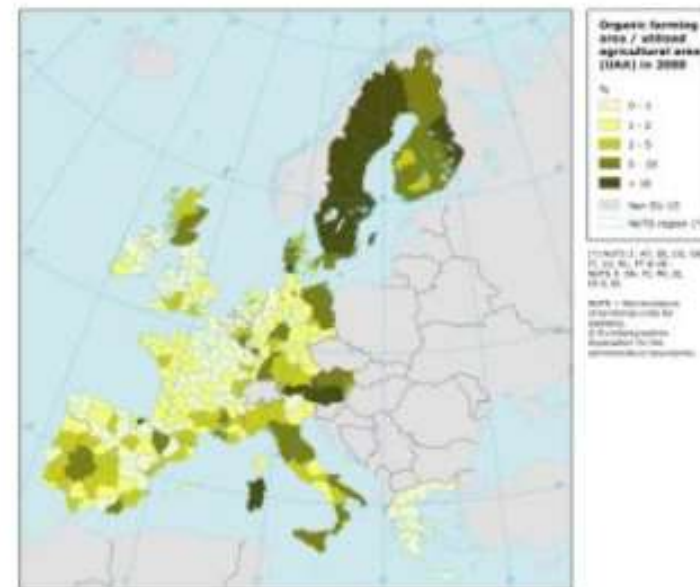


Case Studies

European Environment Agency

The **European Environment Agency**, the EU body dedicated to providing independent information on the environment and the main information source for environmental policies, are using **EuroBoundaryMap** to relate their environmental information and indicators to the administrative areas in Europe.

One example is the use of **EuroBoundaryMap** to classify environmental regions within their **CORINE** landcover dataset, providing support for the protection of **European ecosystems**, stopping the loss of biological diversity, tracking the impacts of climate change, assessing developments in agriculture and implementing the European Union's Water Framework Directive among others.



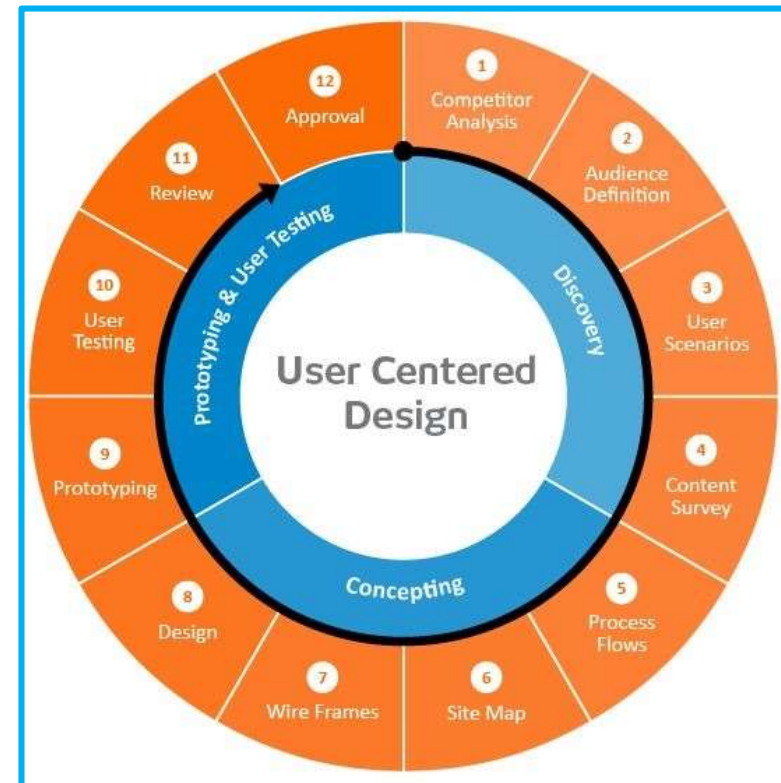
Developing a User Centred Approach



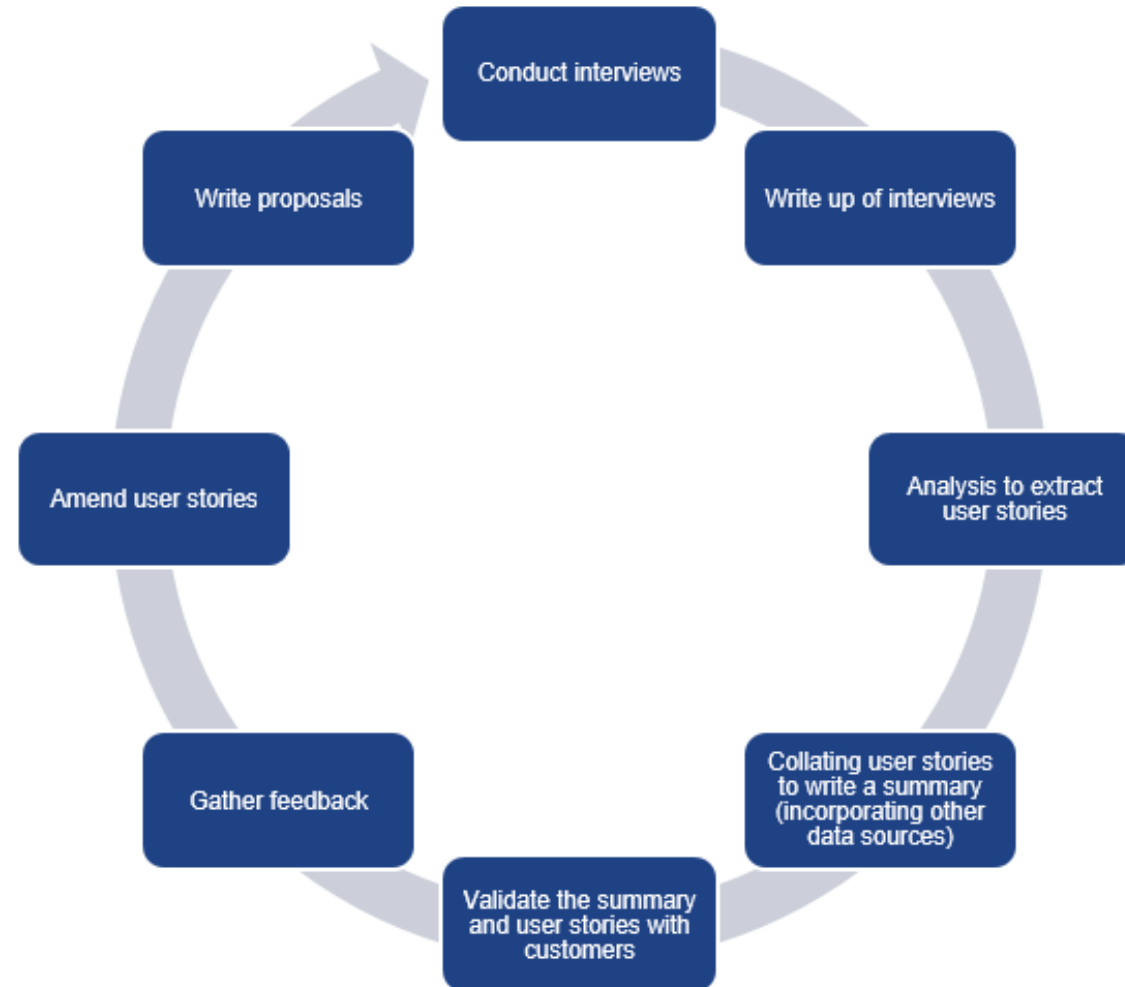
Build it and they will come

...or...

User Centred Design



OpenELS Approach



What did we learn.... More later...

Users of pan-European Authoritative Geo Data - summary

- Data that can be trusted
- Data that is easy to access (access point; terms of use; well described)
- High quality, maintained and up to date
- Harmonised (cross-border; content; terms of use)
- Sufficient level of detail for application

- ... meets requirements for specific use cases

- **Design with the user at the centre!**

Thank you

