



INSPIRE GML used as exchange format of CP in the real estate traffic in Spain



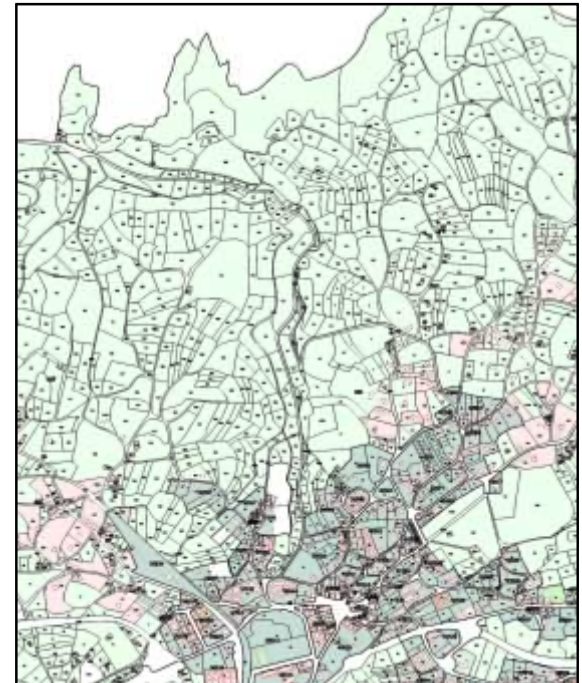
Amalia Velasco
General Directorate for Cadastre

- **Spanish Cadastre is**
 - **An Administrative Register (Ministry of Finances)**
 - **Available to public policies and citizens requiring information from the Territory (by Law)**

Main task for the Spanish cadastre: Valuation
Our values are the base for taxation
Main income for municipalities

Cadastral GIS

The cadastre has information on all rural and urban parcels in a **homogeneous way, as a territorial continuum,**



Spanish law establishes that the Cadastre is a register describing rural and urban real estates.

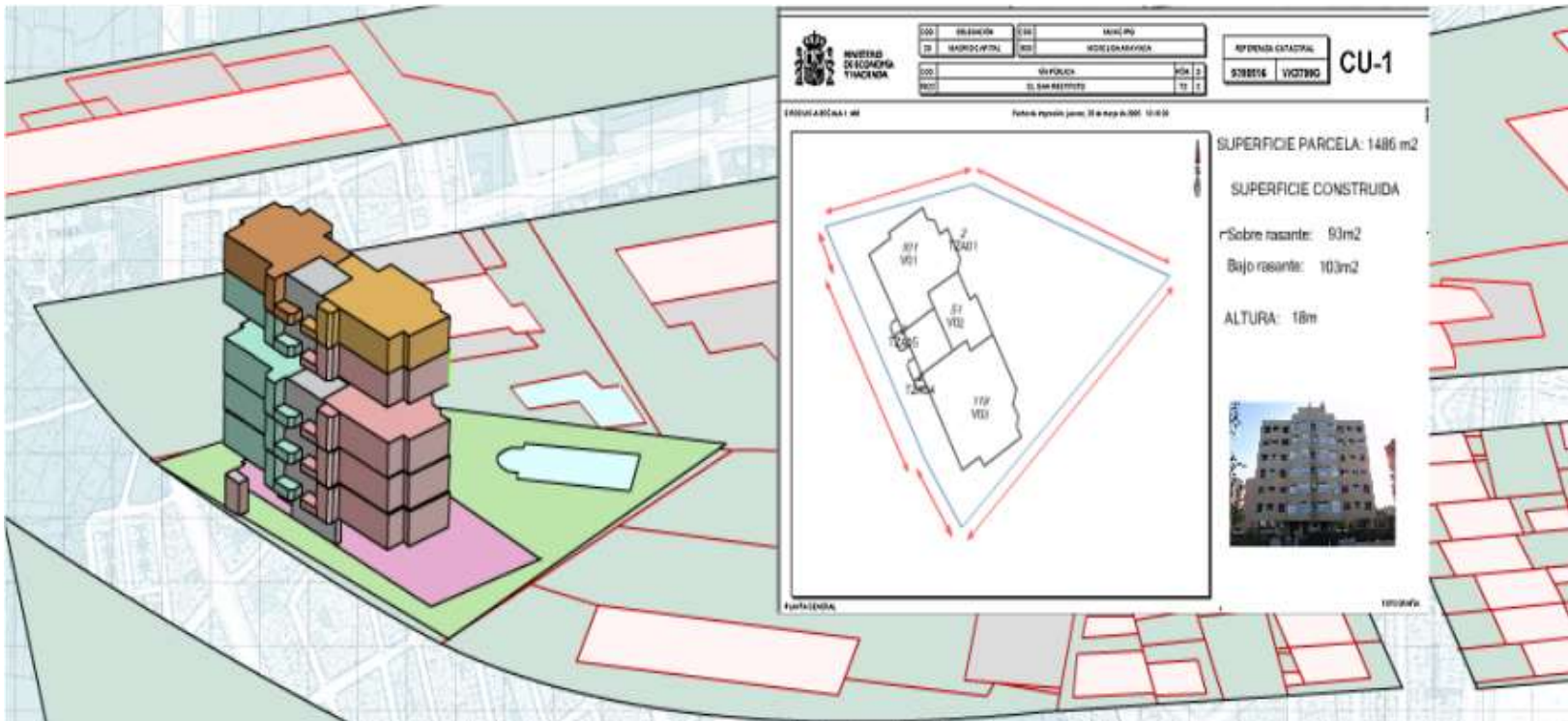


- **Real Estate Identification data:**
 - cadastral reference, province, municipality, addresses or location.
- **Juridical data of real estate:**
 - Titleholders' name and national identity number, addresses of titleholders and the notification address, date of acquisition and rights data....
- **Physical data of real estate:**
 - land area, buildings area, class of crops, coordinates, conservation status, use (legal and actual one), construction typology, year of construction.....

Economic data of the real estates:

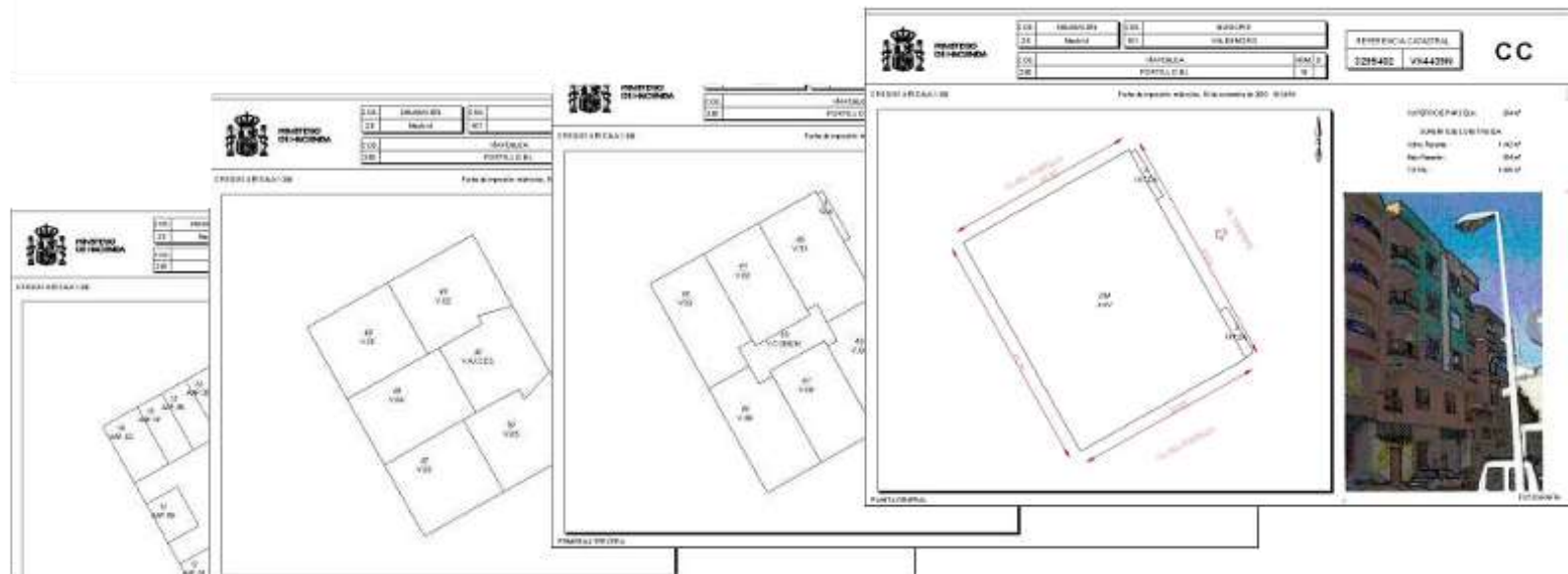
value of land, value of construction and cadastral value, criteria and valuating module, real estate taxable value, exemptions and benefits.

**Because we are a fiscal cadastre.
We can not have only information about the parcel or the
building , we need more information.
We need the information inside the building , the
distribution of each property, the common areas etc...**





For every building we have a document with scaled graphic representation of the properties forming an urban real estate building.



All the different floors and interior spaces are represented .

Also a digital photo of the building

This document is stored in the system as documental information and link up to parcel data by means of the cadastral reference

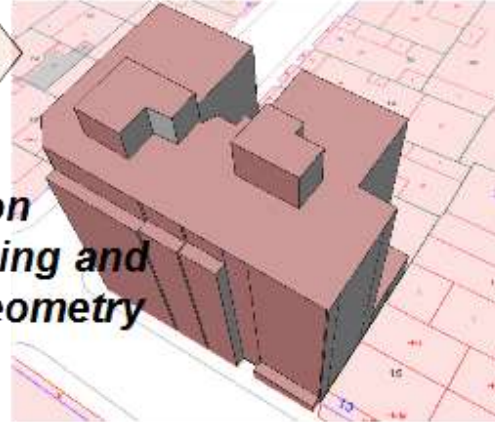


3D MODELING

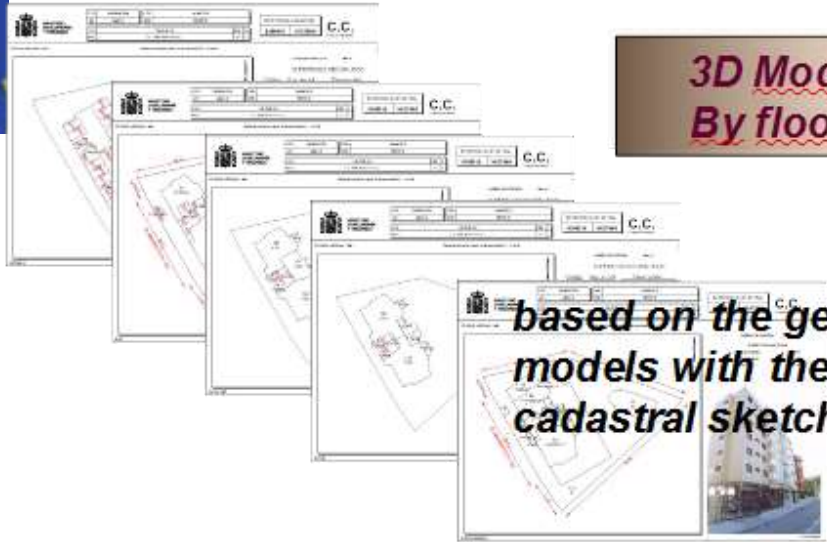
**3D Model
General floor**



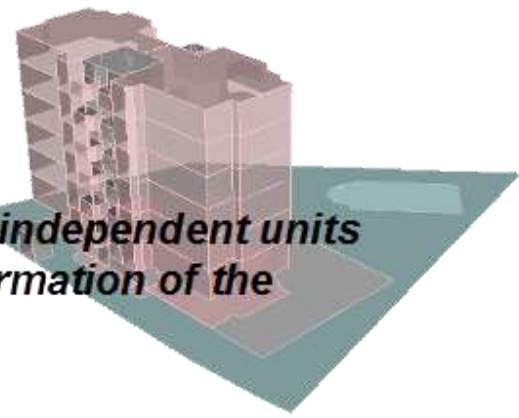
Based on modeling by extrusion on the basis of cadastral mapping and the attribute of construction geometry to get the "z" component



**3D Model
By floors**



based on the generation of independent units models with the vector information of the cadastral sketch by plants



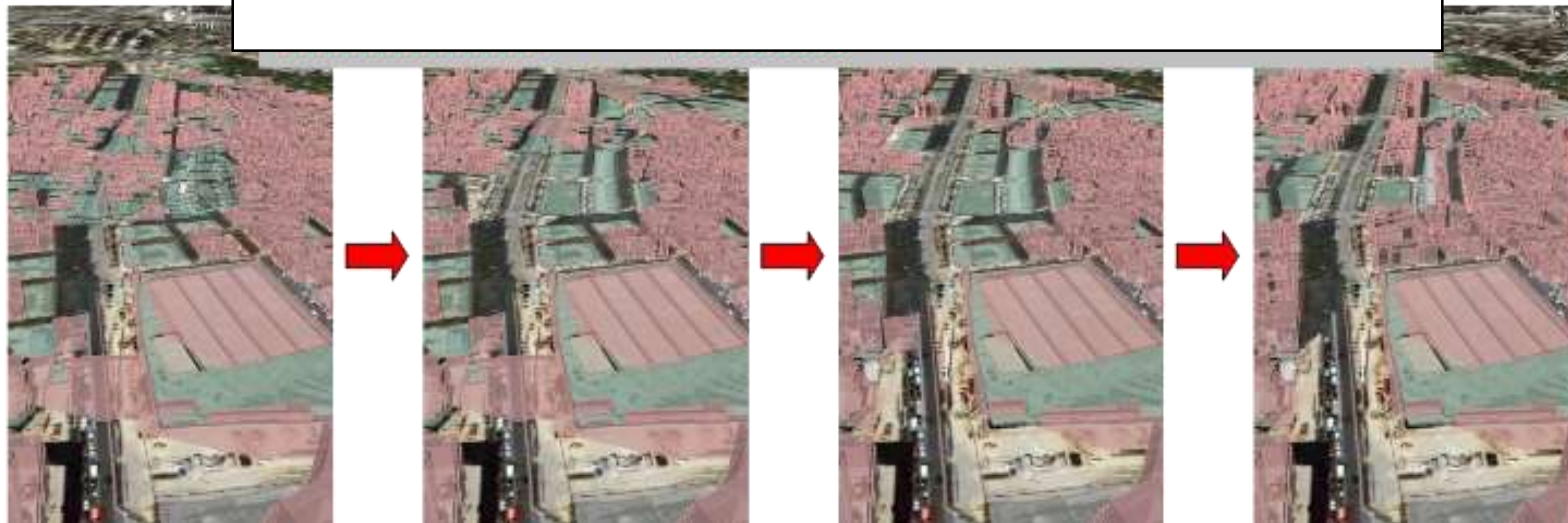
2002



2008

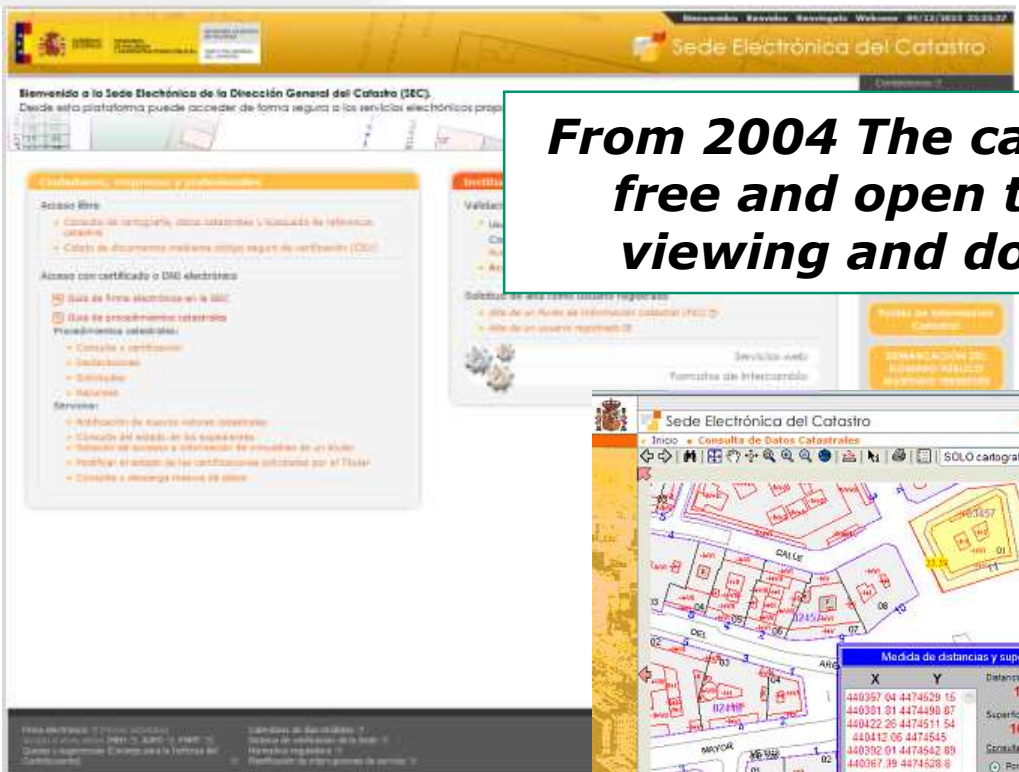


4D cadastre....3D + time

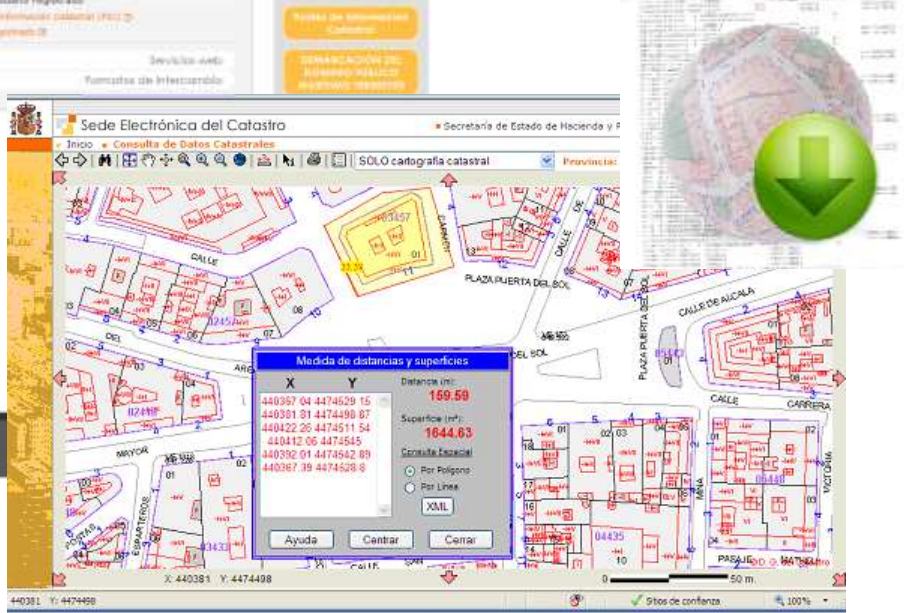




Cartography in the electronic website



From 2004 The cadastral maps are free and open to everyone for viewing and download , 24x7



Annual maps download: over 180 M



Cartography in the electronic website



Viewer



viewer that allows users to navigate from an overview of the complete territory to approach each one of the parcels, buildings and units

and also through the map access to the most relevant alphanumeric characteristics of them.



INSPIRE Services of Cadastral Cartography

General Directorate for Cadastre



Download Services



Download services with INSPIRE information offered by General Directorate for Cadastre are:

 **WFS INSPIRE Services**

 **WFS Cadastral Parcel (GP)**
<http://ovc.catastro.moh.es/INSPIRE/wfsCP.aspx?>
 METADATA
 Description of the service

 **WFS Addresses (AD)**
<http://ovc.catastro.moh.es/INSPIRE/wfsAD.aspx?>
 METADATA
 Description of the service

 **WFS buildings (BU)**
<http://ovc.catastro.moh.es/INSPIRE/wfsBU.aspx?>
 METADATA
 Description of the service

 **ATOM Services INSPIRE of Predefined Data Sets**

This services allow the completed download by municipality of the INSPIRE data set.
Description of the service

 **ATOM Cadastral Parcel (CP)**
http://www.catastro.moh.es/INSPIRE/CadastralParcel/ES.SBOC_CP.atom.xml
 METADATA

 **ATOM Addresses (AD)**
http://www.catastro.moh.es/INSPIRE/Addresses/ES.SBOC_AD.atom.xml
 METADATA

 **ATOM buildings (BU)**
http://www.catastro.moh.es/INSPIRE/buildings/ES.SBOC_BU.atom.xml
 METADATA



Factors to be taken into account in the implementation of INSPIRE

- 1 We have a huge amount of data and not all of them are included in INSPIRE
- 2 We can not only think in our corporative system but in the many collaborators and users of our information.

creation, maintenance and diffusion of cadastral data is done either directly or in collaboration with local authorities, notaries, land registrars and other public entities that work in the territory

- 3 . We update continuously



Cadastral basic data / Daily updating

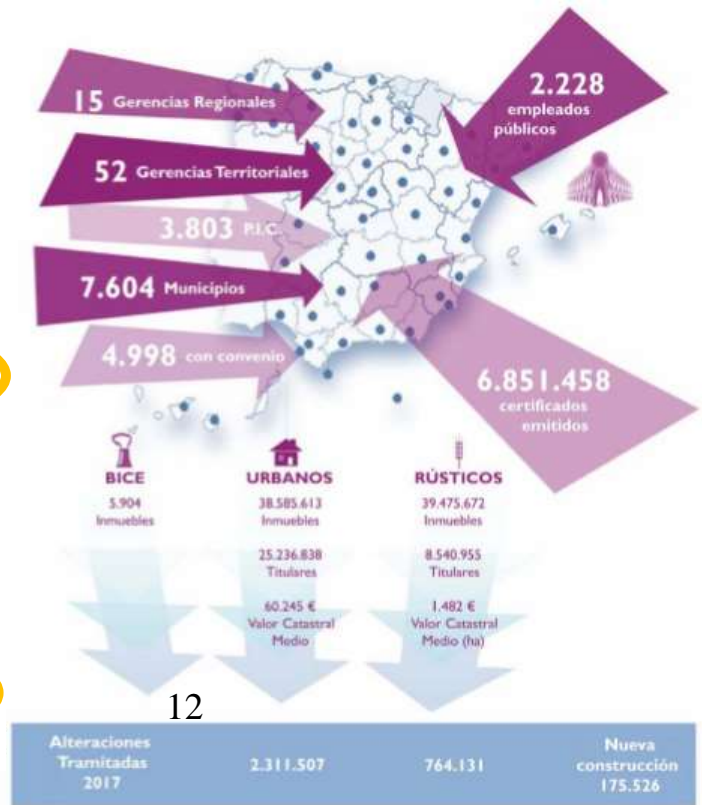
Urban Cadastre

- 1.062.636 ha maps 1/1.000 o
- 12 M de buildings
- 14 M cadastral parcels,
- 39 M urban units
- **6.500 real estate updated daily, 480 new constructions**



Rural Cadastre:

- 47.387.942 ha maps a 1:5.000
- 39,2 M parcels
- **2.500 real estate updated daily**



INSPIRE Services of Cadastral Cartography

General Directorate for Cadastre

INSPIRE SERVICES IMPLEMENTATION

We do not change our data base...too much implications-

We produce the INSPIRE services only with some of our data

- *Metadata and WMS and WFS service are already implemented*
- *Own Developing*
- *Continuous map for the whole territory*
- *Integrated in the Cadastral Virtual Office*
 - *7 days , 24 hours , free of charge*



INSPIRE GEOPORTAL

Enhancing access to European spatial data

[About](#) | [Contact](#) | [Legal Notice](#)

English (en) ▾

[European Commission](#) > [INSPIRE](#) > [Geoportal](#) > [Download details](#)

[Home](#) | [Priority Data Sets Viewer](#) ▾ | [INSPIRE Thematic Viewer](#) ▾ | [Harvesting status](#) | [Find out more about](#) ▾

Cadastral Parcel

[Download Options](#) ▾

[View Options](#) ▾

[Data set Metadata](#) ▾

Resource Title

Cadastral Parcel

Resource Abstract

Cadastral Parcels. Urban and rural cartography. Territorial representation of cadastre

Lineage

Authoritative Cadastral data validated and quality assured by the conditions defined by the Spanish Directorate General for Cadastre (SDGC). Completed for all urban and rural areas for the 95% of the Spanish territory under the responsibility of SDGC. No topological gaps or topological overlaps between cadastral parcels in adjacent data sets. Continuously updated. Transformed in its whole to INSPIRE CP data model, populating Cadastral Parcel and Cadastral Zoning features.

Unique Resource Identifier

Code:

Namespace:

Conditions Applying To Access And Use

Data should be attributed with :© Dirección General del Catastro" and following the Cadastral regulations in force, the users should adhere to the following restrictions:1. Use of the original graphic cadastral data is not allowed. Use can only be made of data that have been subject to some previous transformation process that gives rise to a different copyrighted work.2. The transformation of cadastral data shall not involve alteration of the content of the original data, nor distortion of the meaning thereof.The transformed product should not pass itself as a cadastral product, only as a product making use of cadastral data

Limitations On Public Access

Open Access

Geographic Bounding Box





European Commission > INSPIRE > Geo

Home Priority Data Sets

Cadastral Parcel

Download Options

View Options

Search..

Simple Viewer

Preview Data Set

Preview Data Set

Data set Metadata

Resource Title

Cadastral Parcel

Resource Abstract

Cadastral Parcels. Urban and rural cadastre

Lineage

Authoritative Cadastral data validated and quality assured by the conditions defined by the Spanish Directorate General for Cadastre (SDGC). Completed for all urban and rural areas for the 95% of the Spanish territory under the responsibility of SDGC. No topological gaps or topological overlaps between cadastral parcels in adjacent data sets. Continuously updated. Transformed in

Service metadata



CadastralParcel (CP.CadastralParcel)

you might need to zoom-in to see the information

Leaflet | Credits: © OpenStreetMap contributors | EC-GISCO, © EuroGeographics for the administrative boundaries (disclaimer)

Legend

Spanish General Directorate for Cadastre

OK

General del Catastro¹ and the users should adhere to the graphic cadastral data is not allowed. Use can only be made of data that have been subject to some previous transformation process that gives rise to a different copyrighted work.2. The transformation of cadastral data shall not involve alteration of the content of the original data, nor distortion of the meaning thereof.The transformed product should not pass itself as a cadastral product, only as a product making use of cadastral data

Limitations On Public Access



INSPIRE GEOPORTAL

Enhancing access to European spatial data

About | Contact | Legal Notice

English (en) ▾

European Commission > INSPIRE > Geoportals > Download details

Home Priority Data Sets Viewer INSPIRE Thematic Viewer Harvesting status Find out more about ▾

Cadastral Parcel

Download Options ▾

Search..

Download link

Get Data Set

Get Data Set

View Options

Data set Met

INSPIRE Geoportals



```

<?xml version="1.0" encoding="ISO-8859-1"?>
<!--Parcela Catastral de la D-G del Catastro-->
<!--La precisión es la que corresponde normalmente a la escala de captura de la cartografía-->
<FeatureCollection numberReturned="84" timeStamp="2018-11-23T15:24:39" xmlns="http://www.opengis.net/wfs/2.0" xsi:schemaLocation="http://www.opengis.net/wfs/2.0 http://schemas.opengis.net/wfs/2.0/wfs.xsd http://inspire.ec.europa.eu/schemas/cp/4.0 http://inspire.ec.europa.eu/schemas/cp/4.0/CadastralParcel.xsd" xmlns:gml="http://www.isotc211.org/2005/gml" xmlns:cp="http://inspire.ec.europa.eu/schemas/cp/4.0" xmlns:slink="http://www.w3.org/2001/xlink" xmlns:gml2="http://www.opengis.net/gml/3.2" xmlns:xsi="http://www.w3.org/2001/XMLSchema-instance">
  <member>
    <cp:CadastralParcel gml:id="ES.SDGC.CP.1707903VK4810F">
      <cp:areaValue uom="m2">519</cp:areaValue>
      <cp:beginLifeSpanVersion>2002-02-14T00:00:00</cp:beginLifeSpanVersion>
      <cp:endiLifeSpanVersion nilReason="http://inspire.ec.europa.eu/codelist/VoidReasonValue/Unpopulated" xsi:nil="true"/>
      <cp:geometry>
        <gml:MultiSurface gml:id="MultiSurface_ES.SDGC.CP.1707903VK4810F" srsName="http://www.opengis.net/def/crs/EPSSG/0/4326">
          <gml:surfaceMember>
            <gml:Surface gml:id="Surface_ES.SDGC.CP.1707903VK4810F.1" srsName="http://www.opengis.net/def/crs/EPSSG/0/4326">
              <gml:patches>
                <gml:PolygonPatch>
                  <gml:exterior>
                    <gml:LinearRing>
                      <gml:posList count="19" srsDimension="2">40.474116 -3.688096 40.474115 -3.688088 40.474083 -3.68789 40.474058 -3.687728 40.474052 -3.687694 40.474044 -3.687697 40.474022 -3.687703 40.473954 -3.687721 40.473934 -3.687727 40.473929 -3.687728 40.473921 -3.68773 40.473936 -3.687825 40.473952 -3.687932 40.473953 -3.687933 40.473957 -3.687961 40.473983 -3.688125 40.473984 -3.688132 40.47405 -3.688114 40.474116 -3.688096</gml:posList>
                    </gml:LinearRing>
                  </gml:exterior>
                  <gml:PolygonPatch>
                    </gml:PolygonPatch>
                  </gml:patches>
                </gml:Surface>
              </gml:surfaceMember>
            </gml:MultiSurface>
          </cp:geometry>
          <cp:inspireId>
            <Identifier xmlns="http://inspire.ec.europa.eu/schemas/base/3.3">
              <localId>1707903VK4810F</localId>
              <namespace>ES.SDGC.CP</namespace>
            </Identifier>
          </cp:inspireId>
          <cp:label>03</cp:label>
          <cp:nationalCadastralReference>1707903VK4810F</cp:nationalCadastralReference>
          <cp:referencePoint>
            <gml:Point gml:id="ReferencePoint_ES.SDGC.CP.1707903VK4810F" srsName="http://www.opengis.net/def/crs/EPSSG/0/4326">
              <gml:pos>40.474018 -3.687913</gml:pos>
            </gml:Point>
          </cp:referencePoint>
        </cp:CadastralParcel>
      </member>
    </member>
  </cp:CadastralParcel gml:id="ES.SDGC.CP.1707904VK4810F">
    <cp:areaValue uom="m2">290</cp:areaValue>
    <cp:beginLifeSpanVersion>2002-02-14T00:00:00</cp:beginLifeSpanVersion>
    <cp:endiLifeSpanVersion nilReason="http://inspire.ec.europa.eu/codelist/VoidReasonValue/Unpopulated" xsi:nil="true"/>
    <cp:geometry>

```





INSPIRE GEOPORTAL

Enhancing access to European spatial data

[About](#) | [Contact](#) | [Legal Notice](#)

English (en) ▼

[European Commission](#) > [INSPIRE](#) > [Geoportal](#) > [Download details](#)

- [Home](#)
- [Priority Data Sets Viewer](#)
- [INSPIRE Thematic Viewer](#)
- [Harvesting status](#)
- [Find out more about](#)

Address

[Download Options](#) ▼

[View Options](#) ▼

[Data set Metadata](#) ▼

Resource Title

Address

Resource Abstract

Address. Urban and rural cartography. Territorial representation of cadastre

Lineage

Addresses of the authoritative Cadastral data validated and quality assured by the conditions defined by the Spanish Directorate General for Cadastre (SDGC). Addresses are related to cadastral parcel. Each cadastral parcel contains as attribute one or more addresses. Address data is completed for all urban and rural areas for the 95% of the Spanish territory under the responsibility of SDGC. Addresses are georeferenced, when it is possible, to the entrance of the building and in other cases to the centroid of the cadastral parcel. Continuously updated. Transformed in its whole to INSPIRE AD model; populating Address, ThoroughfareName, PostalDescriptor and AdminUnitName features.

Unique Resource Identifier

Code:

Conditions Applying To Access And Use

Data should be attributed with :© Dirección General del Catastro" and following the Cadastral regulations in force, the users should adhere to the following restrictions:1. Use of the original graphic cadastral data is not allowed. Use can only be made of data that have been subject to some previous transformation process that gives rise to a different copyrighted work.2. The transformation of cadastral data shall not involve alteration of the content of the original data, nor distortion of the meaning thereof.The transformed product should not pass itself as a cadastral product, only as a product making use of cadastral data

Limitations On Public Access

Open Access

Geographic Bounding Box





INSPIRE GEOPORTAL

Enhancing access to European spatial data

[European Commission](#) > [INSPIRE](#) > [Geoportal](#) > [Download details](#)

- [Home](#)
- [Priority Data Sets Viewer ▾](#)
- [INSPIRE Thematic Viewer ▾](#)
- [Harvesting status](#)
- [Find out more about ▾](#)

Building

- [Download Options ▾](#)
- [View Options ▾](#)
- [Data set Metadata ▾](#)

Resource Title

Building

Resource Abstract

Buildings. Urban and rural cartography. Territorial representation of cadastre

Lineage

Authoritative Cadastral data validated and quality assured by the conditions defined by the Spanish Directorate General for Cadastre (SDGC). Completed for all urban and rural areas for the 95% of the Spanish territory under the responsibility of SDGC. Continuously updated. Transformed in its whole to INSPIRE 2D extended BU model; populating Building, Building Parts and Other Constructions (only open air pools) features.. The geometry of Buildings is defined a multi-surface feature that represents the footprint of the all existing constructions above ground inside each cadastral parcel. BuildingPart is each of the parts of a building that has homogeneous volume (numbers of floors).

Unique Resource Identifier

Code:

Namespace:

Conditions Applying To Access And Use

Data should be attributed with :© Dirección General del Catastro" and following the Cadastral regulations in force, the users should adhere to the following restrictions:1. Use of the original graphic cadastral data is not allowed. Use can only be made of data that have been subject to some previous transformation process that gives rise to a different copyrighted work.2. The transformation of cadastral data shall not involve alteration of the content of the original data, nor distortion of the meaning thereof.The transformed product should not pass itself as a cadastral product, only as a product making use of cadastral data

Limitations On Public Access

Open Access

Geographic Bounding Box





Building

Download Options

View Options

Search..

Simple Viewer

Preview Data Set

Data set Metadata

Find out more about

Service metadata

BuildingPart (BU.BuildingPart)

you might need to zoom-in to see the information

Legend

Spanish General Directorate for Cadastre

OK



The fiscal Cadastre has become a Multifunctional Cadastre



Legal security and fraud control in real estate traffic:

Location and identification of the properties.
The cadastral reference as "Real estate identifier" in deeds- Rg. Property / Tax ation/ Contracts / Valuations

Social and aid policies

Policies, infrastructures, services

- Urban planning, land use
- Networks of services and supplies
- Agrarian, environmental, building features
- Other rights, limitations and restrictions
- Risk maps, civil protection, emergencies
- Linking or support of statistical data (geo-statistics)



INSPIRE data and services can be very helpful to users.

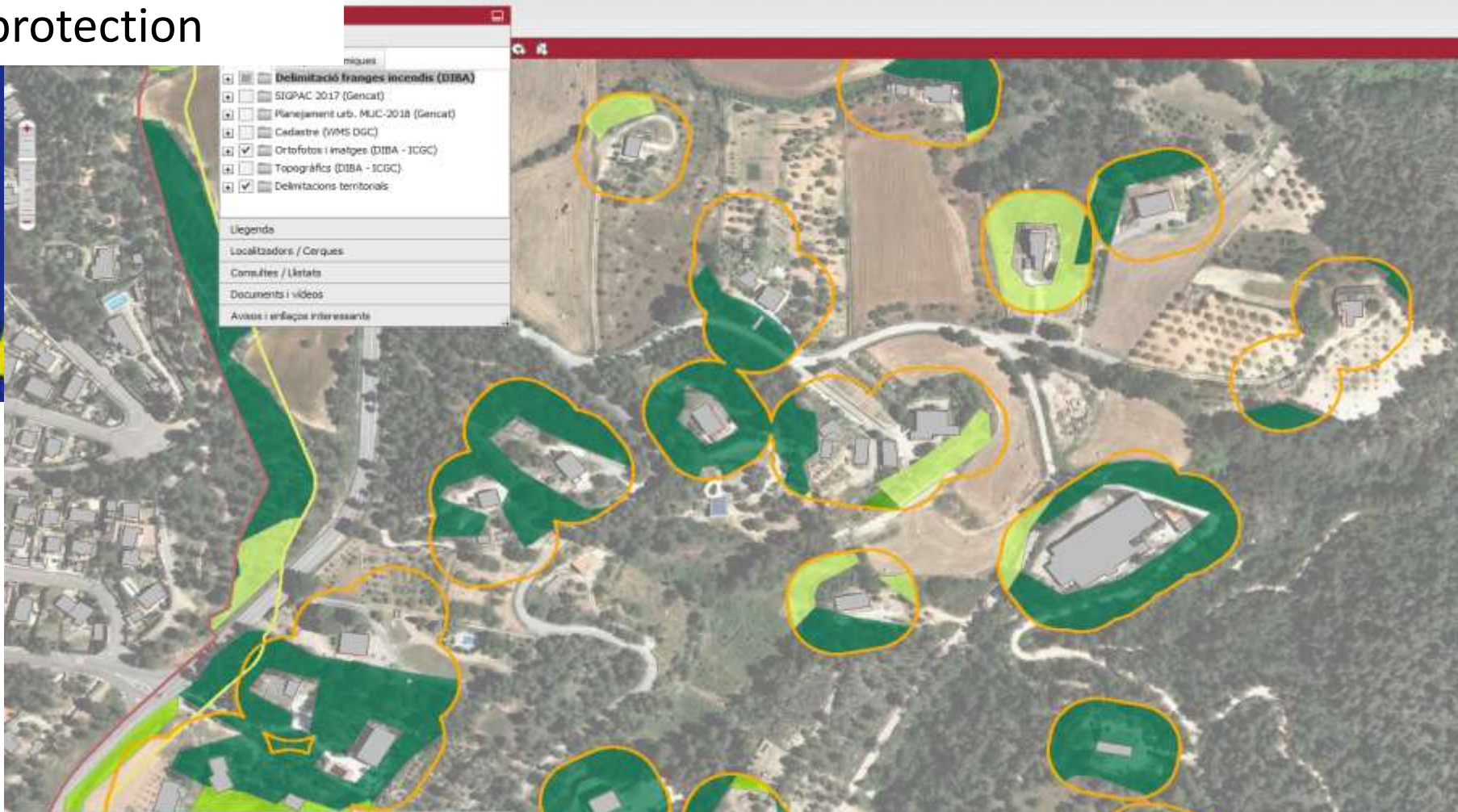
- Interoperable with other themes.
- Standard
- Less information than in our traditional exchange formats.
- Compatible with more tools



But still not very much known by our users

Some examples of current uses:

For example:
delimitation of
forest fire
protection



Some examples of current uses:

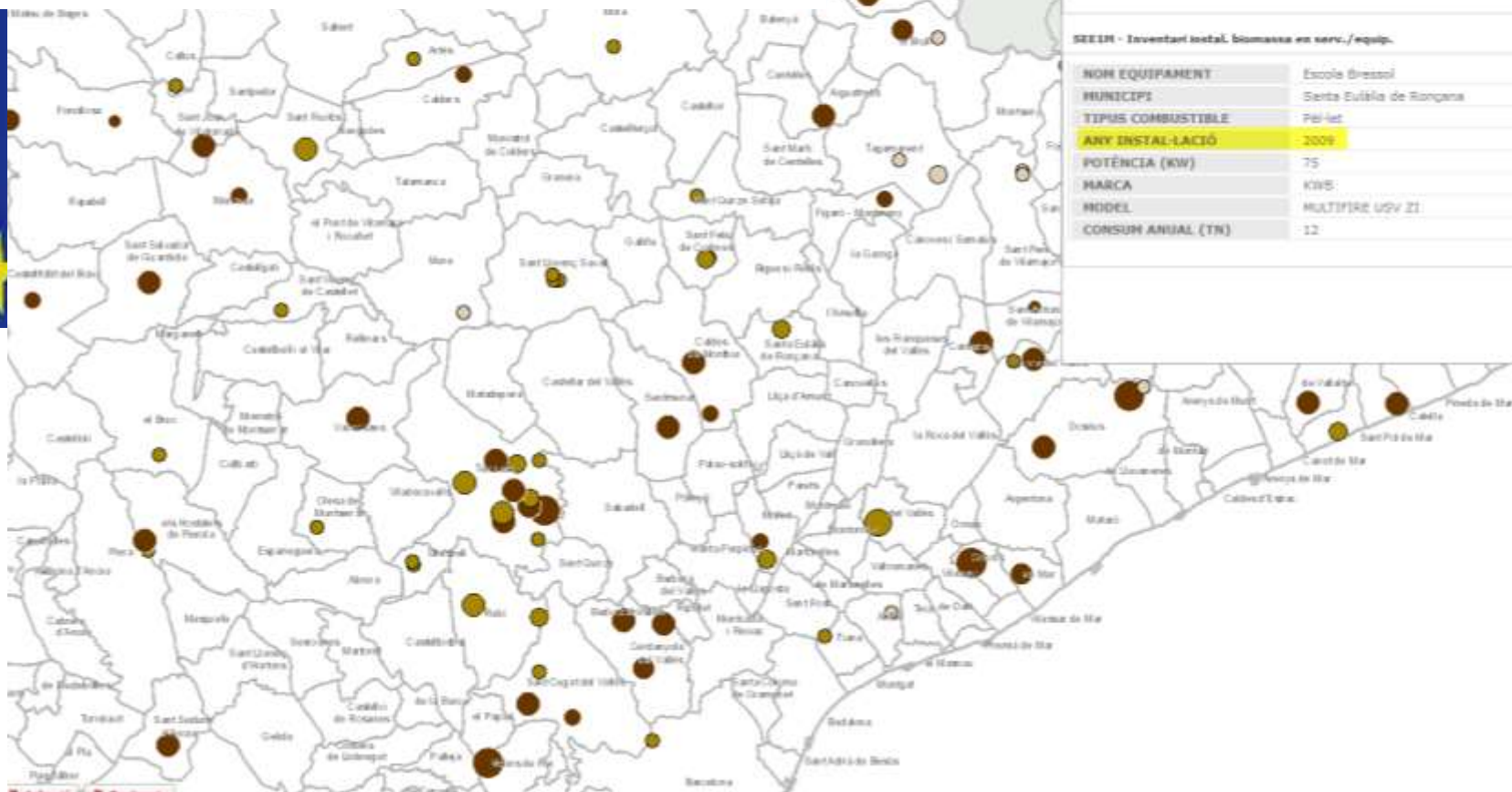
With the surface of swimming pools (other constructions) we can calculate an approximation of water consumption in summer, very useful in dry season

Superficie piscines (m2)
Total: 4.319.645,26



Some examples of current uses:

In order to know the year of installation of biomass boilers and taking into account that they are installed especially in buildings of new construction, the year of construction of the building is used (and is revised retrospectively)



Informació	
DTES0 - Municipis (Simita) (ICGC)	
NOM MUNICIPI	Santa Eulàlia de Ronçana
CODI INE MUNICIPI	08248
CODI INE (6 posicions)	082482
[i]	DT - Disponibilitat d'informacions geogràfiques
[i]	DT - Informació general del municipi
[i]	DT - Informació municipal IDESCAT
SEEM - Inventari instal. Biomassa en serv./equip.	
NOM EQUIPAMENT	Escola Bressol
MUNICIPI	Santa Eulàlia de Ronçana
TIPUS COMBUSTIBLE	Pel·let
ANY INSTAL·LACIÓ	2009
POTÈNCIA (KW)	75
MARCA	KWS
MODEL	MULTIFIRE UQV 21
CONSUM ANUAL (TN)	12

Some examples of current uses:

Studies on empty housing: they intersect addresses and cadastral ref with other information



Some examples of current uses:

OBJECTIVE

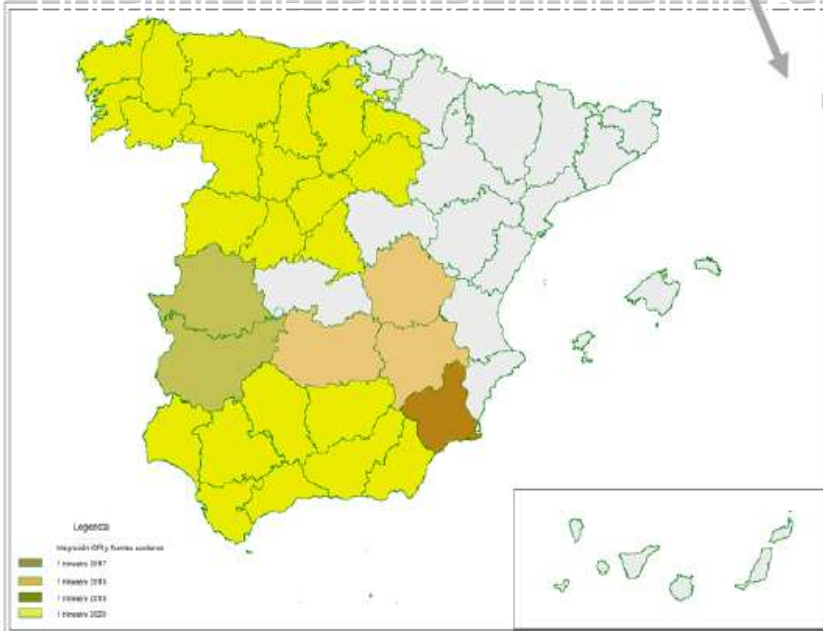
Updating the national topographic Base in a continuous way



WFS Catastro



BTN25 actualizada

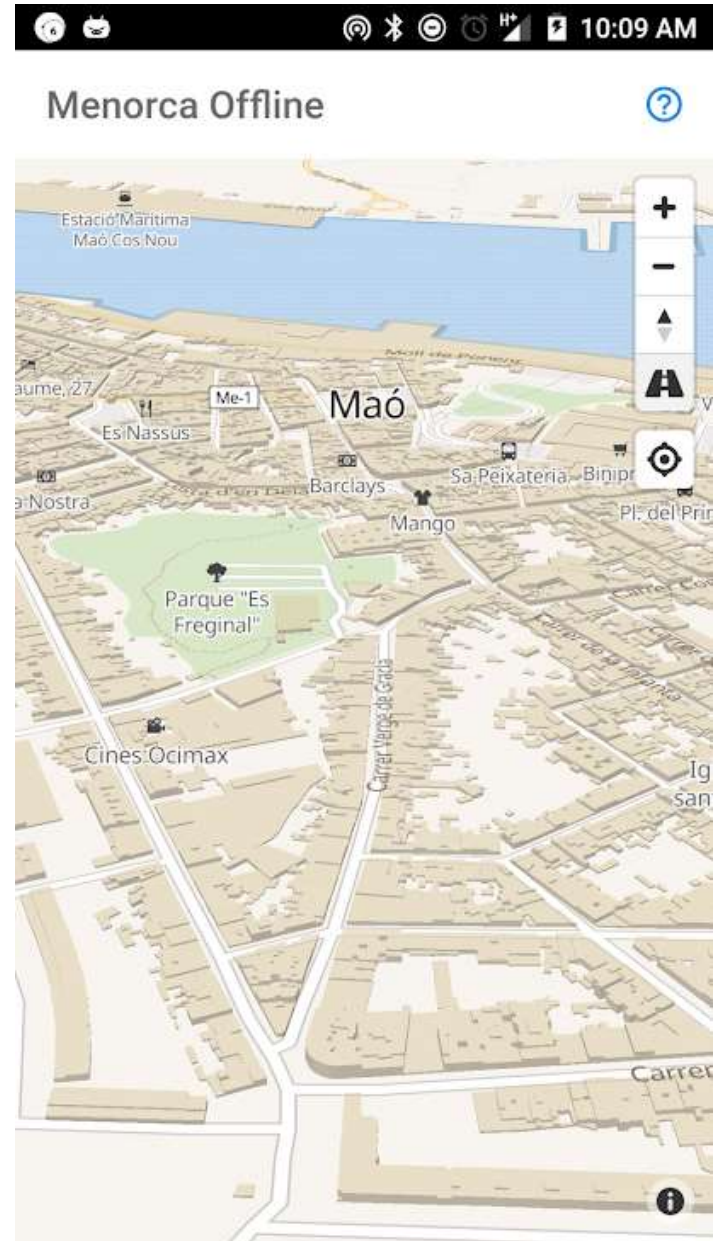


Some examples of current uses:



Private company create an aap

Simple solution to the problem of developing apps that are both offline and multyplatform.



After many attempts for coordination between the Cadastre and Property Rights Registry

Cadastre – Property Rights Registry Coordination



Law 13/ 2015 Goals



To give real estate traffic greater legal certainty by incorporating the **georeferenced** graphic information of the parcels in the Property Rights Registry,

- **the cadastral map** as the basis of its graphic representation,
- Mechanism to exchange INSPIRE CP GML
- allowing simultaneously the updating and correction of the cadastral data.





Cadastre, Registries and Notaries have designed a new technologically advanced model of institutional interaction that enables the use of geo-referenced graphical information in the real state transactions.

Web Services



www.sedecatastro.gob.es



the INSPIRE GML cadastral parcel has been the instrument chosen to achieve the correct graphic description of the registered properties,



GML INSPIRE of a cadastral parcel, is now widely used by all agents involved in property transactions in Spain.

INSPIRE in Real life of people



The deed and the registration anotation must include a cadastral certificate

The cadastral certification is an electronic document (PDF format)
 It includes embedded the GML INSPIRE of cadastral parcel.

CERTIFICACIÓN CATASTRAL DESCRIPTIVA Y GRÁFICA
 Referencia catastral: 3226708Y10232N0001JB

DATOS DESCRIPTIVOS DEL INMUEBLE

Localización: CL MARINA 35 SECTOR 6-7 PARC 146 03177 SAN FULGENCIO [ALICANTE]
 Clase: Urbana
 Uso principal: Residencial
 Superficie construida: 133 m² Año construcción: 2001

Valor catastral (2016): 150.000,00 €
 Valor catastral suelo: 30.000,00 €
 Valor catastral construcción: 70.000,00 €

Titularidad

Apellidos Nombre / Bases social	NO/NIE	Derecho	Domicilio fiscal
JUAN ESPAÑOL ESPAÑOL	121456789 X	100% de PI	CL MARINA 35 03177 SAN FULGENCIO [ALICANTE]

Construcción

Local E/FP	Destino	Superficie m ²	Local E/FP	Destino	Superficie m ²
IND	VIVIENDA	88	IND	PORCHE 100%	11
INDICATA	CAPACITIVO	37			

PARCELA CATASTRAL

Superficie gráfica: 254 m² Tipo: Suelo sin edificar Participación del inmueble: 100,00 %

Este certificado refleja los datos incorporados a la Base de Datos Nacional del Catastro. Solo podrá utilizarse para el ejercicio de las competencias del solicitante.
 Solicitante: DIRECCIÓN GENERAL DEL CATASTRO
 Fase/Acta: inscripción
 Fecha de emisión: 28/03/2016



The deed and the registration anotation must include a cadastral certificate



CERTIFICACION CATASTRAL DESCRIPTIVA Y GRÁFICA
Referencia catastral: 89B4704TF398BS001YA

DATOS DESCRIPTIVOS DEL INMUEBLE

Localización: CL CLARA CAMPOAMOR 35 Suato 41730 LAS CABEZAS DE SAN JUAN (SEVILLA)
Clase: Urbano
Uso principal: Residencial
Superficie construida: 414 m2 Año construcción: 2005
Valor catastral [2016]:
Valor catastral suelo:
Valor catastral construcción:

Titularidad

Apellidos Nombre / Razón social	NIF/NIE	Derecho	Dominio fiscal
		100% de propiedad	

Construcción

Esc./Pta./Pta.	Destino	Superficie m²	Esc./Pta./Pta.	Destino	Superficie m²
E1-1A	APARCAMIENTO	130	E-50B	VIVIENDA	83
E00C	OTROS USOS	10	E-50D	OTROS USOS	28
E00E	DEPORTIVO	69	E-61F	VIVIENDA	84

PARCELA CATASTRAL



The certificate and its attached file are signed electronically using a Secure Verification Code (CSV)

Composed by 16 digits

Documento firmado con CSV y emitido por la DIRECCIÓN GENERAL DEL CATASTRO. CSV: 89B4704TF398BS001YA

These 16 digits are the only information that is exchanged



What happen when it is necessary to change the representation of the parcel?

- declarations of citizens: segregations, divisions, joints ..
- land consolidations,
- reparcelling,
- administrative demarcation,
- expropriation
- acts of urban planning and urban managing
- first registration in the PRR
- errors

Citizens and administrations must provide an **alternative geo-referenced representation**, also as INSPIRE GML Cadastral Parcel format



"Validation service of alternative geo-referenced graphical representations"

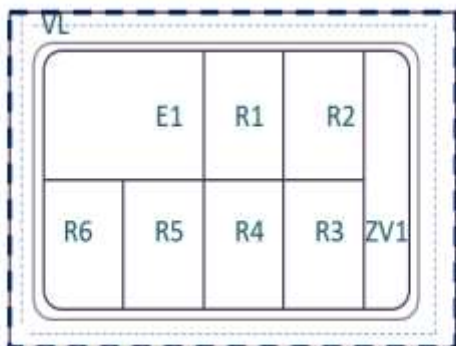
Alternative geo-referenced representation

The cadastral cartography is the basis of the new representation.

The technicians are required to represent the reality as an overlay on the cadastral cartography,



New parcelation



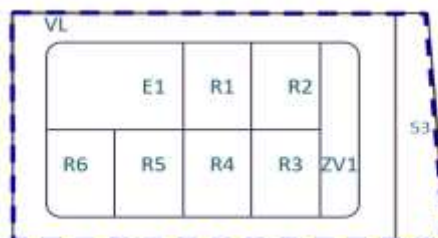
1. Download GML (or other formats: DXF, etc) from Cadastre
2. Modify by private tools (autocad, qgis, etc..)
3. Include the alternative geo-referenced representation that must be expressed in GML of CP



Cadastral original data



Alternative georeferenced representation



Validation service of alternative geo-referenced graphical representations”, 34

GML INSPIRE of the origin cadastral parcel



1. Free access from the screen, as query results.

```

<cp:geometry>
<!-- Geometria en formato GML -->
-<gml:MultiSurface gml:id="MultiSurface_ES.LOCAL.1A" srsName="urn:ogc:def:crs:EPSG::25830">
<!-- srsName codigo del sistema de referencia en el que se dan las coordenadas -->
-<gml:surfaceMember>
-<gml:Surface gml:id="Surface_ES.LOCAL.1A" srsName="urn:ogc:def:crs:EPSG::25830">
-<gml:patches>
-<gml:PolygonPatch>
-<gml:exterior>
-<gml:LinearRing>
<gml:posList srsDimension="2">269206.53 4805322.37 269208.05 4805321.49 269213.18 4805318.58 269214.32
4805318.03 269217.09 4805316.71 269215.45 4805312.97 269215.07 4805312 269214.02 4805309.29 269213.49
4805308.53 269210.73 4805304.61 269208.93 4805301.04 269214.33 4805297.84 269218.83 4805295.18 269222.32
4805293.13 269220.9 4805290.06 269217.22 4805282.12 269213.26 4805280.82 269193.37 4805292.4 269194.81
4805295.18 269197.19 4805299.77 269198.41 4805302.03 269200.19 4805305.32 269197.13 4805307.24 269203.13
4805318.29 269203.85 4805317.84 269206.53 4805322.37</gml:posList>
</gml:LinearRing>
</gml:exterior>
</gml:PolygonPatch>
</gml:patches>
</gml:Surface>
</gml:surfaceMember>
</gml:MultiSurface>
  
```

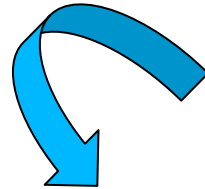
2. As a service using the WFS INSPIRE cadastral Parcel

3. With the cadastral certification, obtained by the title holders and public partners agents

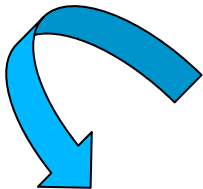


Captura y generación de ficheros por técnico competente

GML de parcela catastral



Validation service of alternative geo-referenced graphical representations”,



whose result is the "Graphic validation report“.

INFORME DE VALIDACIÓN GRÁFICA

Datos del solicitante

Nombre: [Redacted]
 Domicilio: [Redacted]
 Teléfono: [Redacted]

Especificaciones del trabajo profesional

Resultado de la validación

POSITIVO

The report is an electronic document signed with the secure verification code.



It has also de INSPIRE GML file



Document collation (Cotejo de documentos)

Cotejo de documentos

Castellano | Gallego | Català | English

Este servicio permite el cotejo de un documento electrónico mediante su código seguro de verificación (CSV). El Código Seguro de Verificación garantiza, mediante el cotejo en la Sede electrónica de la Dirección General del Catastro, la integridad y autenticidad de los documentos electrónicos del citado centro directivo (Artículo 18.1.b de la Ley 11/2007, de 22 de junio, de acceso electrónico de los ciudadanos a los Servicios Públicos). Dicho código, regulado por la Orden HAP/12902/2011, se visualiza en el margen derecho de todas las páginas de los documentos electrónicos emitidos por la Dirección General del Catastro

📄 Descargue un ejemplo de notificación de Procedimiento de Valoración Colectiva (PVC) con CSV.
📄 Descargue un ejemplo de una Certificación Descriptiva y Gráfica con CSV.

Código Seguro de Verificación

Código Seguro de Verificación: 97ATAZQBNG4R15Z1x

Aceptar | Volver

📄 Descargue documento

📄 Actualización de previsiones al descargar el documento PDF

INFORME DE VALIDACIÓN GRÁFICA

Parcelas catastrales afectadas

La representación gráfica alternativa según del presente informe afecta a las parcelas catastrales que se relacionan a continuación. La modificación de esta representación gráfica en la cartografía catastral podrá producir una alteración de la ordenación y sujeción de estas parcelas, por lo que se requiere la verificación previa a los titulares catastrales de las mismas en el procedimiento correspondiente.

	Referencia Catastral: 37136A50405231 Dirección: FUENTEGUALDO (SALAMANCA) AFECTADA TOTALMENTE
	Referencia Catastral: 37136A50405230 Dirección: FUENTEGUALDO (SALAMANCA) AFECTADA TOTALMENTE

INFORME DE VALIDACIÓN GRÁFICA

Parcelas resultantes



PARCELA UOK_30-31
superficie 1370 m2

LINDEROS EXTERNOS:
37136A50405228
37136A50405232
37136A50409031
37136A50409032

COORDENADA UTM					
	X	Y			
1.-	697475.37	4473518.82	11.-	697451.47	4473490.16
2.-	697479.14	4473510.93	12.-	697446.38	4473506.46
3.-	697482.07	4473493.55	13.-	697442.04	4473511.29
4.-	697482.80	4473491.04	14.-	697441.10	4473512.00
5.-	697484.86	4473484.96	15.-	697460.22	4473542.28
6.-	697477.97	4473485.05	16.-	697463.45	4473538.43
7.-	697472.85	4473485.61	17.-	697467.80	4473535.45
8.-	697463.99	4473487.78	18.-	697466.10	4473532.08
9.-	697469.70	4473490.06	19.-	697475.37	4473518.82
10.-	697455.36	4473483.61			

Coordinates and boundaries of new parcels

In order to register a building in the Property Rights Registry, the georeference of its position is also required by the law 13/2015 and

Therefore we have done a step further,



- creating the mechanism to use for that the INSPIRE GML BU too
- and open the door to include other attributes of buildings in the future.





Spanish Cadastre can already provide the INSPIRE BU services

with the cadastral attributes : geometry 2d, surface, use, number of floors, below and over the floor, conservation status, year of construction, number of dwellings, cadastral reference, address etc...

Core data is not enough for us because:

*there are attributes as **number of floors below ground** , **values of properties** etc... that are important in cadastre.*

*And also **other constructions** openairpools are important for cadastre*



BuildingExtended2D

Error in the validation



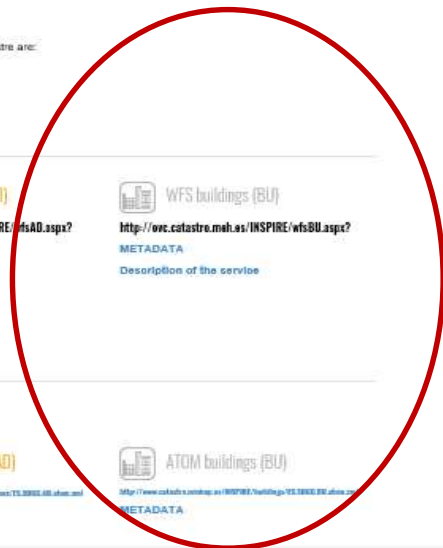
BU extended 2D

- featureMember Building
 “horizontalGeometryReference”-
 “footPrint”
- featureMember OtherConstruction

Download Services

Download services with INSPIRE information offered by General Directorate for Cadastre are:

WFS WFS INSPIRE Services		
 WFS Cadastral Parcel (CP) http://orc.catastro.meh.es/INSPIRE/wfsCP.aspx? METADATA Description of the service	 WFS Addresses (AD) http://orc.catastro.meh.es/INSPIRE/wfsAD.aspx? METADATA Description of the service	 WFS buildings (BU) http://orc.catastro.meh.es/INSPIRE/wfsBU.aspx? METADATA Description of the service
ATOM ATOM Services INSPIRE of Predefined Data Sets		
This services allow the completed download by municipality of the INSPIRE data set. Description of the service		
 ATOM Cadastral Parcel (CP) http://www.catastro.meh.es/INSPIRE/Geobase/Predefined/TS_2002_CP_atom.xml METADATA	 ATOM Addresses (AD) http://www.catastro.meh.es/INSPIRE/Geobase/Predefined/TS_2002_AD_atom.xml METADATA	 ATOM buildings (BU) http://www.catastro.meh.es/INSPIRE/Geobase/Predefined/TS_2002_BU_atom.xml METADATA





1. Download GML CP (or other formats: DXF, etc) from Cadastre



2. Create by private tools (autocad, qgis, etc..)

- featureMember Building

“horizontalGeometryReference”-“footPrint”

- featureMember OtherConstruction



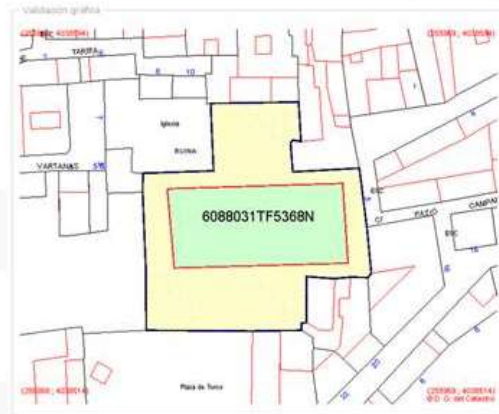
3. Include the alternative geo-referenced representation that must be expressed in GML of BU

- Also the GML of the CP

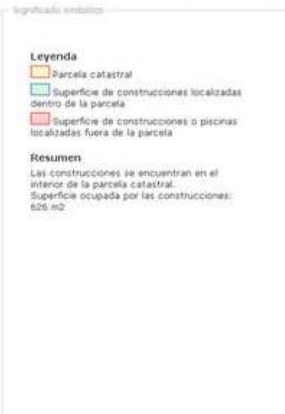


In the same way

Validation report of georeferencing constructions



Informe positivo



The electronic document includes as attachments, the provided GML files.

It is signed with a CSV



Informe negativo



The building must be inside the cadastral parcel

http://www.catastro.minhap.es/ayuda/vga/ayuda_ICUC.htm

(1) El esquema Building Extended 2D de INSPIRE (<http://inspire.ec.europa.eu/draft-schemas/bu-ext2d/2.0/BuildingExtended2D.xsd>) se encuentra aún en fase de draft, y tiene pendiente la incorporación de algunos detalles que figuran en el estándar. Entre ellos, añadir el valor openAirPool al atributo constructionNature del featureMember OtherConstruction.

La D.G.C. usa dicho atributo con ese valor para calificar las piscinas al aire libre, lo que hace que los gml de edificio que incluyen piscina proporcionados por la SEC no validan frente al draft de esquema actual. Por ello las validaciones de esquema se realizan contra un esquema ligeramente modificado que se mantiene en local. La url de este esquema es: <http://www.catastro.minhap.es/ws/esquemas/GML/inspire.ec.europa.eu/draft-schemas/bu-ext2d/2.0/BuildingExtended2D.xsd>



Conclusions



There are not jet many uses of the INSPIRE services of Spanish Cadastre. It is only the begining...

But the new system of coordination between Cadastre and registre based in the INSPIRE GML:

has allowed to establish a fluid and safe exchange of information between all the agents involved in the real estate traffic and

has led to the development of applications, products and services by private initiatives.

GML file is now well known by surveyors, engineers, architect, notaries, register workers, etc. and it has become the standard in cartography exchange

INSPIRE in Real life





Conclusions

With the introduction of this system, not only we are making advance in the coordination between Cadastre and Property Rights registry

but also **we are standardizing the data and processes within all the actors that work in the land management.**

The citizens, the public authorities that work in the territory have the duty to communicate to the Cadastre land consolidations, reparcelling, administrative demarcation, expropriation and acts of urban planning and urban managing

for this communication they are using now the INSPIRE GML.



In this way we are

**enhancing interoperability between them,
simplifying administrative procedures
and reducing costs**



Thanks for your attention!!!!

INSPIRE GML used as exchange format of CP in the real estate traffic in Spain



Amalia Velasco
amalia.velasco@catastro.minhfp.es
General Directorate for Cadastre