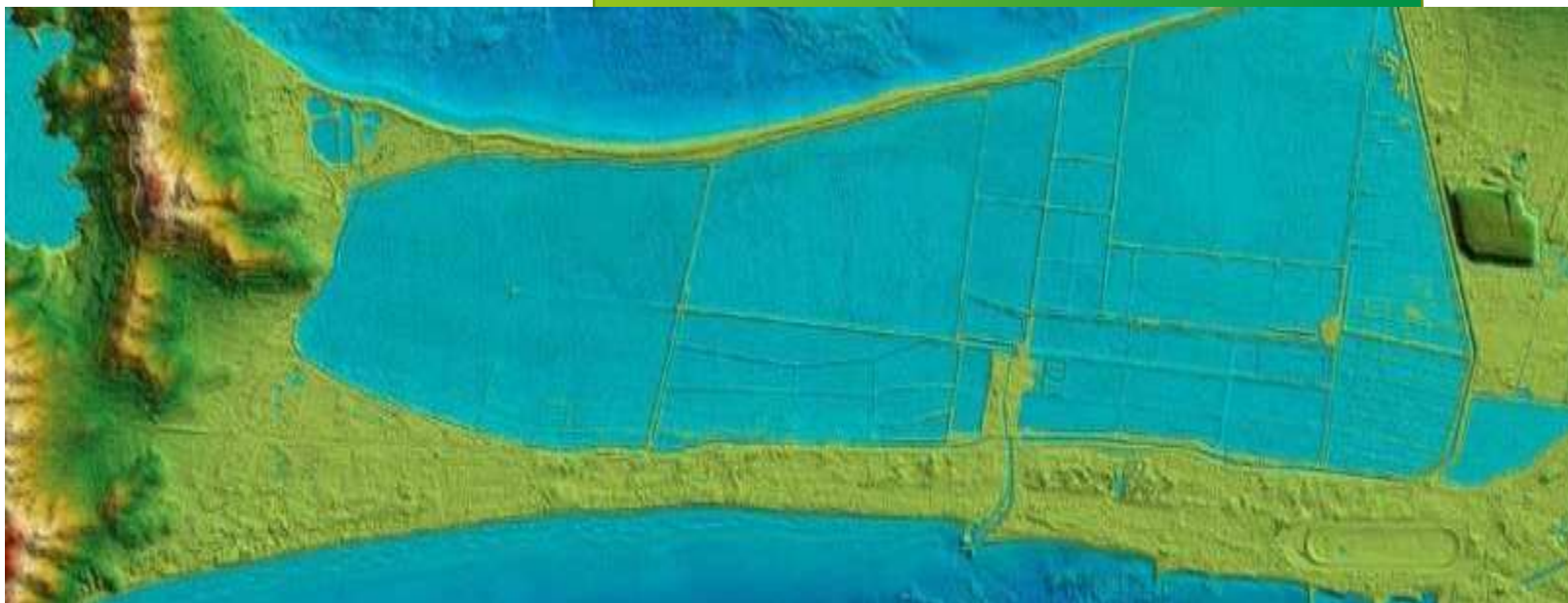




INSTITUT NATIONAL  
DE L'INFORMATION  
GÉOGRAPHIQUE  
ET FORESTIÈRE

# IGN EXPERIENCES ABOUT USE OF INSPIRE DATA



Modèle TN-02.018-1.6

© IGN-SHOM

Dominique Laurent

November 2018 – Workshop « Use of  
INSPIREdata »



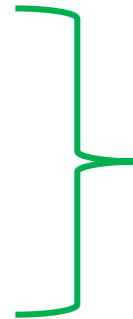
ISN 18.137

# PLAN

 Phase 1 : 2012 – 2014

 Phase 2: 2014 – 2018

 Some learnings



*describe*

*Analyse, explain*



## PHASE 1 (2012- 2014)

# Main characteristics

📍 A lot of enthusiasm



📍 ... but with some doubts



📍 **INSPIRE data might be for all users (included national ones)**



# Strategy

📍 We envisaged an ambitious strategy

- **INSPIRE data instead of our national products**



📍 but we decided a careful one

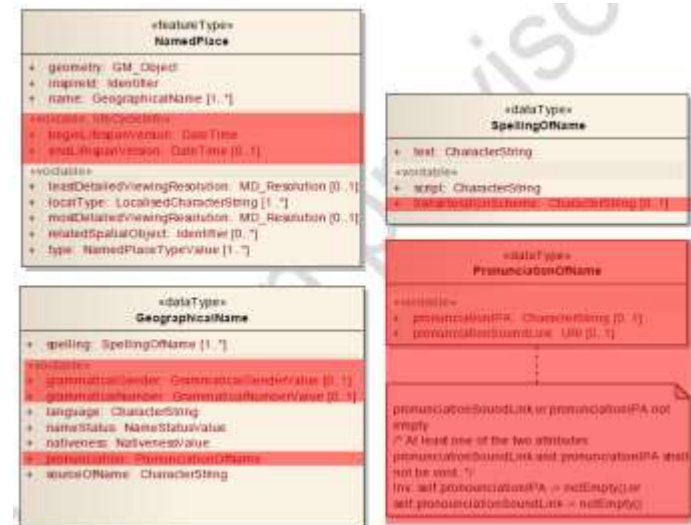
- **in first step, INSPIRE data in complement of our national products**
- **In second step, we 'll see!**



# User accompaniment

## 📍 Enthusiasm:

- **we prepared documentation in French**
  - General INSPIRE modelling principles
  - data specification for each of our 3 first INSPIRE themes (AU, GN, AD)
- Feature Catalogue : use the translation provided by IR
- UML : highlight unpopulated features and attributes



# User accompaniment



## 📍 Enthusiasm:

- **we organised some training for IGN staff in contact with customers**
  - target: marketing, vendors, consultants, after-sales
  - content :
    - INSPIRE context and objectives, IGN policy
    - INSPIRE data models and their implementation
    - integration of INSPIRE

# User accompaniment



## 📍 Some doubts:

- **we conducted several studies related to integration of INSPIRE data into GIS**
  - interview with GIS vendors => know their strategy
  - exercise of integrating INSPIRE data in GIS
  - contact some users to encourage them to integrate our test INSPIRE data and provide feed-back



**Many difficulties, very limited interest from national users**





## PHASE 2 (2014- 2018)

# Main characteristics

📍 Hardly no investment towards users



📍 As very limited set of potential users

- **INSPIRE data is only for X-border or pan-European users**

# Potential users and use cases

## Cross-border cartography

### • **Use of BaseMap on IGN GeoPortal**

- from the ELF project, derived from INSPIRE data
- IGN France, IGN Belgium, IGN Spain
- Belgian Civil Security : need for x-border data
- Under negotiation

### • **Regional initiatives**

- need for harmonised data
- e.g. Pyrenean map (from ERM data)

# Potential users and use cases

## Cross-border database

- **Regional initiatives**

- Hydrographic database
- Potential source: INSPIRed data (Core Reference Data)
- X-border “grande région”

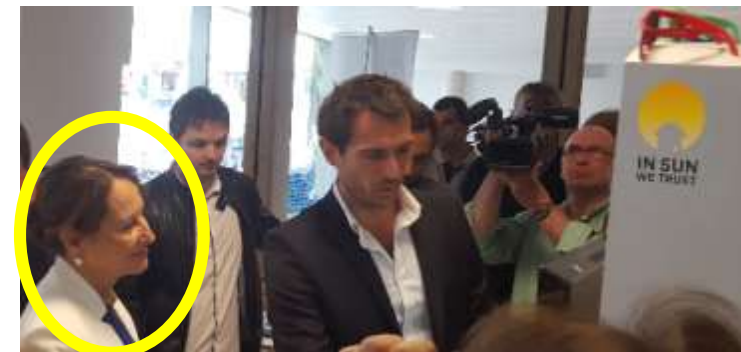
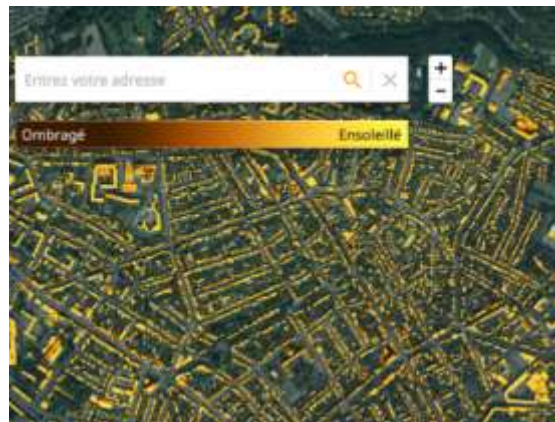


# Potential users and use cases



## 📍 Application developers

- **IGN fab => to promote innovation by start-up**
- interest for some of them to customise their application for other countries with minimum adaptation
  - e.g. Estimate solar potential of roofs => interest for INSPIRE EL, BU data



# Potential users and use cases

## Research

- interest for data in several European areas
  - Urban climate
  - Finding **names** in texts, analysis according their location



Spanish migration around 1935-1940

# State-of-play

## 📍 INSPIRE data and related services published lately (November 2017)

- accessible from IGN web site
- for themes AU, AD, GN, HY, TN and BU

## 📍 Very limited communication about INSPIRE data

- We promote INSPIRE only to users with interest
- No prospection
- No advertisement, no awareness campaign

**Not yet any real users**

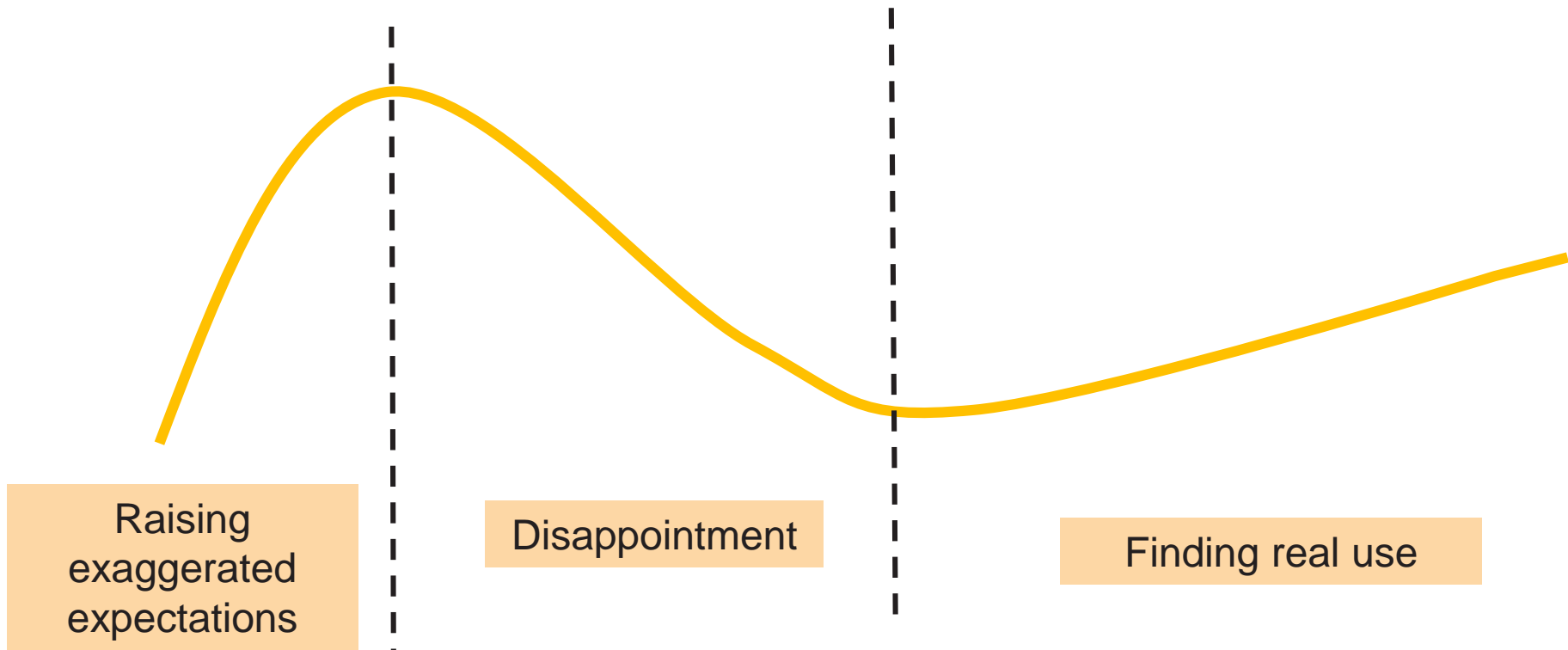


## SOME LEARNINGS



# Why the disruption between phases 1 and 2?

📍 Because of (normal) innovation cycle? partly



# Why the disruption between phases 1 and 2?

## Because of the (bad) results coming from GIS and user survey?

- **partly**

- We realized national users would have difficulties
- But we were not discouraged, envisaging help to users
  - Preconfigured files for QGIS
  - Guidelines, videos, ...

But nothing was done

# Why the disruption between phases 1 and 2?

## Because of the economic context

- continuous cuts in funding
- human resources getting rarer
- **INSPIRE activities in (severe) competition with some other IGN activities**
- Benefits of INSPIRE considered as
  - Future
  - Doubtful

# Why the disruption between phases 1 and 2?

📍 Mainly because of human factor



Those who decide

Those who do

European affairs

Marketing

Programing

Standardisation

Archive –  
Delivery -  
GeoPortal



Phase 1



Phase 2



# Why we might wake up?



# Why we might wake up?

## Stop waiting for INSPIRE data

- **We had first sample data around 2013 (AU, AD, GN)**
- **But it took a long time to have data for effective delivery**
  - Industrialisation of production process
  - Changes of INSPIRE schemas version or in IGN products
  - Add new themes (TN, HY, BU)
  - Validation process

**We have now INSPIRE data we may be confident in.**

# Why we might wake up?

## 📍 Stop waiting to decide on access point

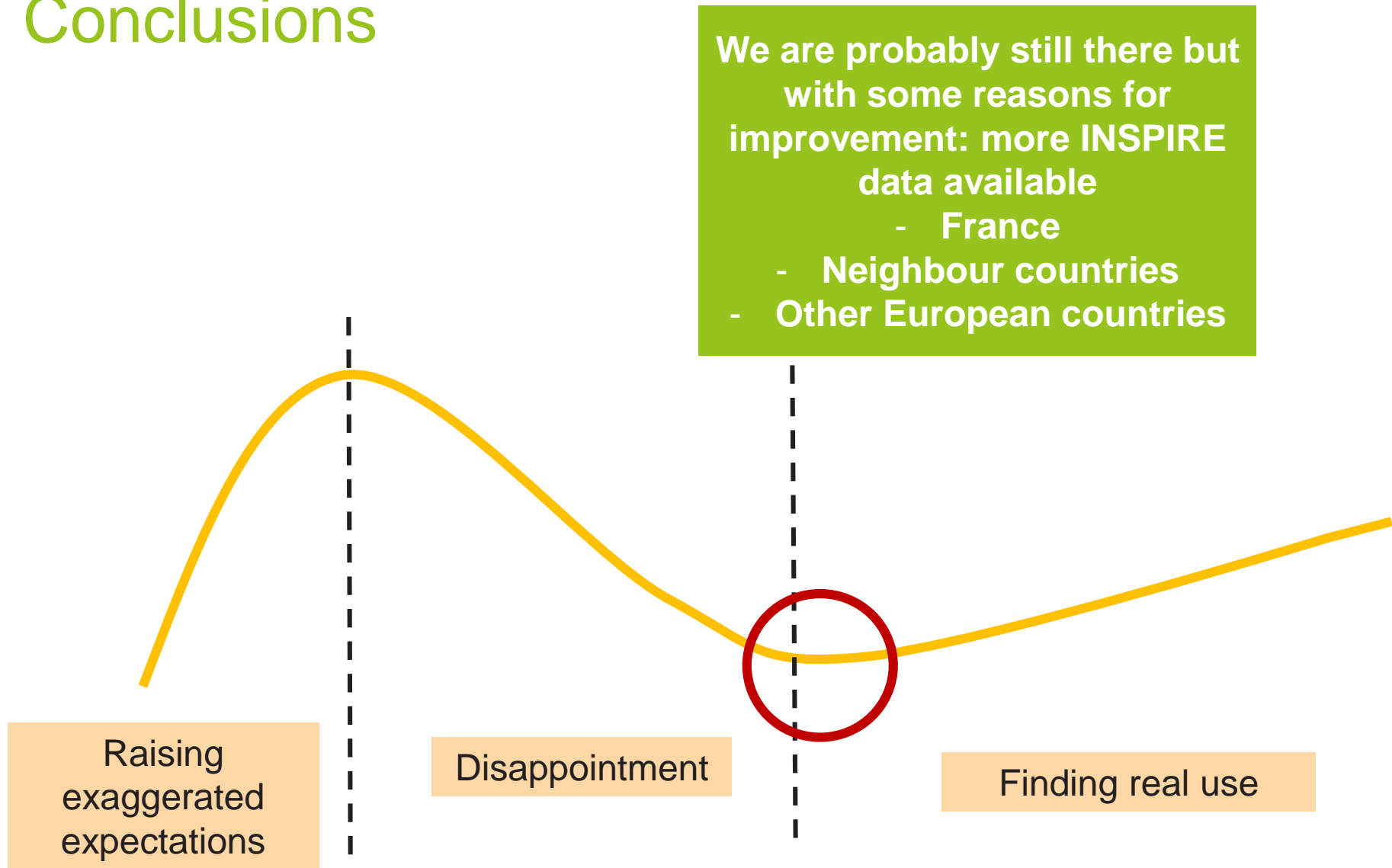
- **IGN was very willing to use the ELF access point**
  - Considered as very relevant for European users (target for INSPIRE data)
  - Expectations for the operational platform

**ELF operational platform  
not ready in 2017**



**Decision to publish  
INSPIRE data on IGN  
web site**

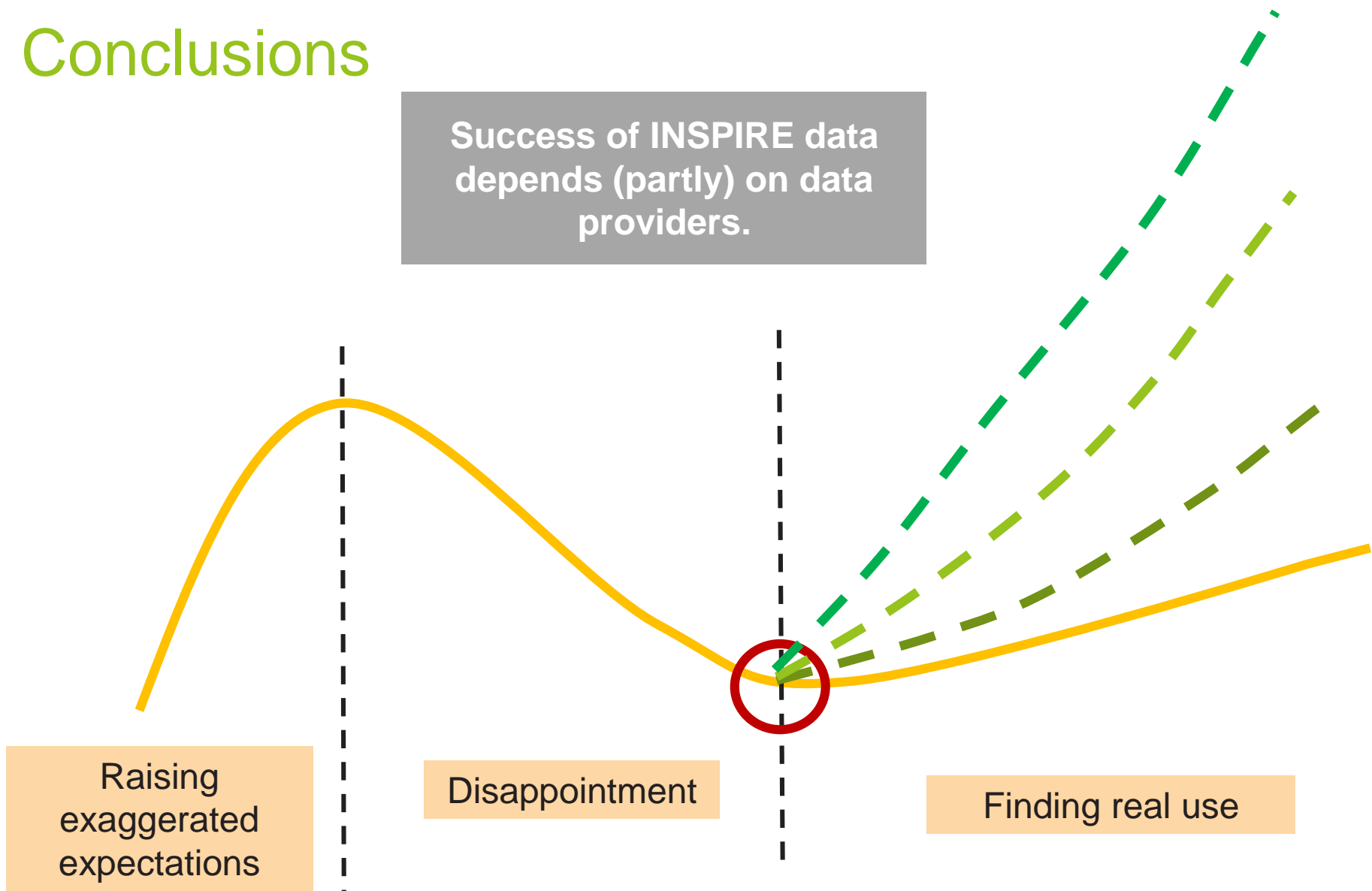
# Conclusions





# Conclusions

Success of INSPIRE data depends (partly) on data providers.



# Conclusions

## 📍 What we should do (ideally)

- **clear strategy**
- **marketing**
  - communication
  - prospection, ..

## 📍 but still a long road ....



Stop hiding our INSPIRE data!

