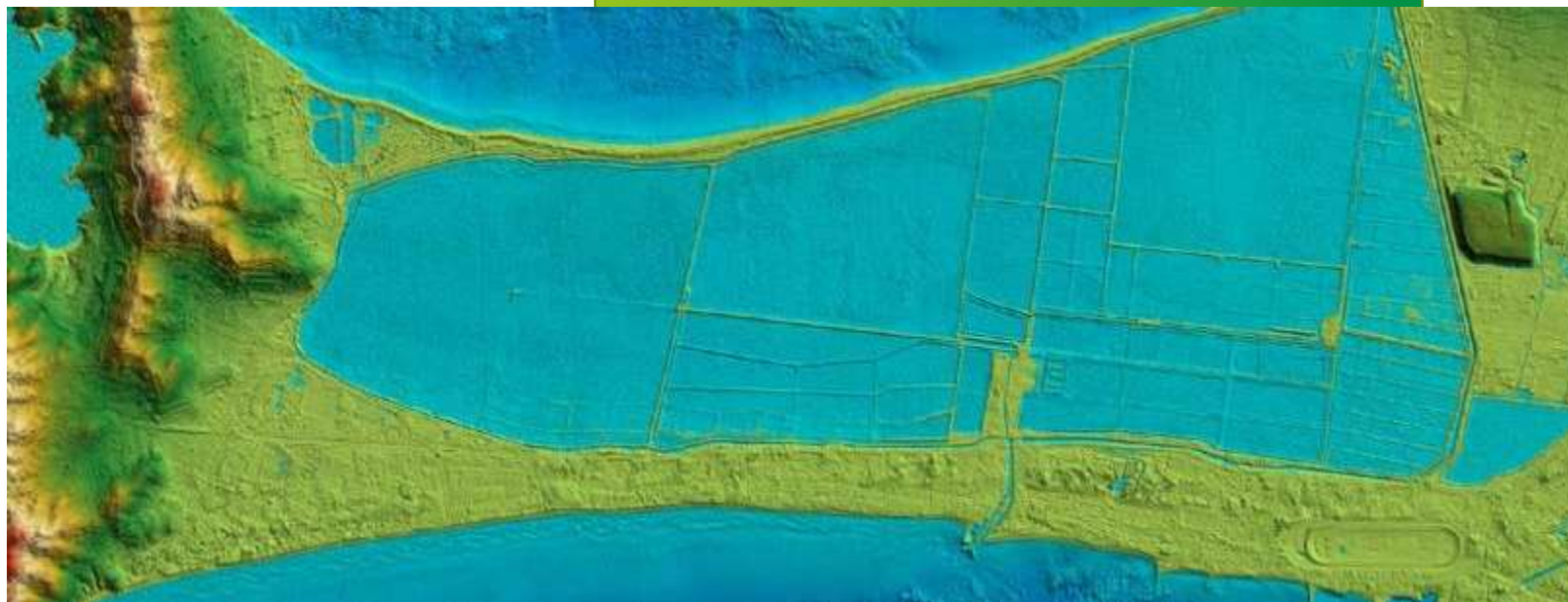




INSTITUT NATIONAL
DE L'INFORMATION
GÉOGRAPHIQUE
ET FORESTIÈRE

NEW MONITORING PROCESS

French case



Modèle TN-02.018-2.0

Dominique Laurent

27 March 2019

© IGN-SHOM



SP4/AA.xxx



FRENCH CONTEXT

FRENCH SDI

- 📍 INSPIRE used as a driver to share data at national level
- 📍 => Big number of INSPIRE data sets
 - 📍 Between 35 000 and 100 000
 - 📍 Lots of local data sets
 - 📍 Some having limited intersection with INSPIRE data models
 - 📍 Not only reference data but also lots of business data
- 📍 => Many difficulties to discover relevant data sets on our national GeoCatalogue.



IMPACT OF NEW RULES ON MONITORING AND REPORTING

AUTOMATIC REPORTING

- 📍 France was a pioneer
- 📍 Previous monitoring was done by harvesting our own metadata
- 📍 Main change:
 - 📍 Harvesting to be done by European Commission
 - 📍 Our workload will be decreased but only lightly

ADDITIONAL KEY WORDS IN METADATA

📍 Preventive action: lobbying, negotiation with Commission

📍 Previous Commission proposal: provide geographic extent for each data set

📍 Would have generated too much burden for many data producers

📍 Was not accepted by France

📍 Current new rules are reasonable consensus

📍 Additional key words are recognized as useful

- For European GeoPortal
- Possibly also for French GeoCatalogue

📍 Additional burden only for few data sets and few data producers

ADDITIONAL KEY WORDS IN METADATA

- 📍 European Commission explicative notice asked to tag “selected reference data sets that are considered to be the **national or regional reference** data set “
- 📍 Notion of “reference” disappeared from European text but France has decided to keep this notion
- 📍 => lots of discussions are on-going
 - 📍 within CNIG (coordinating structure for INSPIRE) – Implementing Rules Commission
 - 📍 Meeting on 07/12/2019
 - Initial discussion about national (or regional) coverage
 - Discussion about methodology for decision: both based on defining selection criteria and selecting data sets from list of candidates
 - 📍 Meeting on 26/03/2019

COVERAGE: DISCUSSION EXAMPLES

📍 Production mode (regional data)

📍 Should we tag as 'regional'

📍 Only data directly produced by the region?

📍 Also data that has been produced at lower levels (department, municipality) and integrated by the region?

📍 Decision:

📍 likely both (but not very clear decision)

COVERAGE: DISCUSSION EXAMPLES

📍 Delivery mode (and data set granularity)

📍 Example : theme Cadastral Parcels

- 📍 One national product (PCI: Plan Cadastral Informatisé)
- 📍 One national producer (Taxation Office)
- 📍 But one data set and one metadata fiche per municipality
- 📍 => \approx 35 000 “local” data sets

📍 Decision:

- 📍 PCI will be tagged with “national” keyword
- 📍 but huge integration work will remain on users!

COVERAGE: DISCUSSION EXAMPLES

- 📍 Priority data sets for environmental reporting
- 📍 By obligation, they cover national territory
- 📍 Is it necessary to add “national” (in addition to “priority data set”)?
- 📍 Decision:
 - 📍 Ask European Commission

COVERAGE: DISCUSSION EXAMPLES

📍 Concept of program

- 📍 Large scale Land Cover data
- 📍 Done with **regional partnership** based on national standard
- 📍 Intends to cover whole France (long term goal)
- 📍 But until now, only small part of France is covered

📍 Decision:

- 📍 Metadata should document current data
- 📍 Large scale LC to be tagged with “regional” coverage

URI:
http://inspire.ec.europa.eu/metadata-codelist/SpatialScope/national
Label:
National
Governance level:
eu-legal (The item is governed at the level of INSPIRE legal acts, including the INSPIRE Directive and Implementing Rules)
Definition:
The scope of the data set intends to cover the national territory.

COVERAGE: DISCUSSION EXAMPLES

📍 Global understanding is that additional key words aim to facilitate integration of pan-European data

1. From national data
2. From regional data produced according to national (or international) standards
3. From any regional data

📍 Integrating heterogeneous regional data

- 📍 may be quite challenging
- 📍 But better than no data at all

📍 Decision:

- 📍 Regional data (even if not standardised) to be tagged with “regional” coverage

REFERENCE DATA: DISCUSSION EXAMPLES

📍 Conflicting view points

- 📍 We expect more interoperability obligations on “national” or “regional” data sets => keep a small list
- 📍 But regions are willing to have their data recognized as “reference” => enlarge the list

📍 Some criteria to be recognized as “reference data”

- 📍 Need for perennial data
- 📍 if recognized as national reference (by regulation) => reference also for INSPIRE

CONCLUSIONS AND LEARNINGS

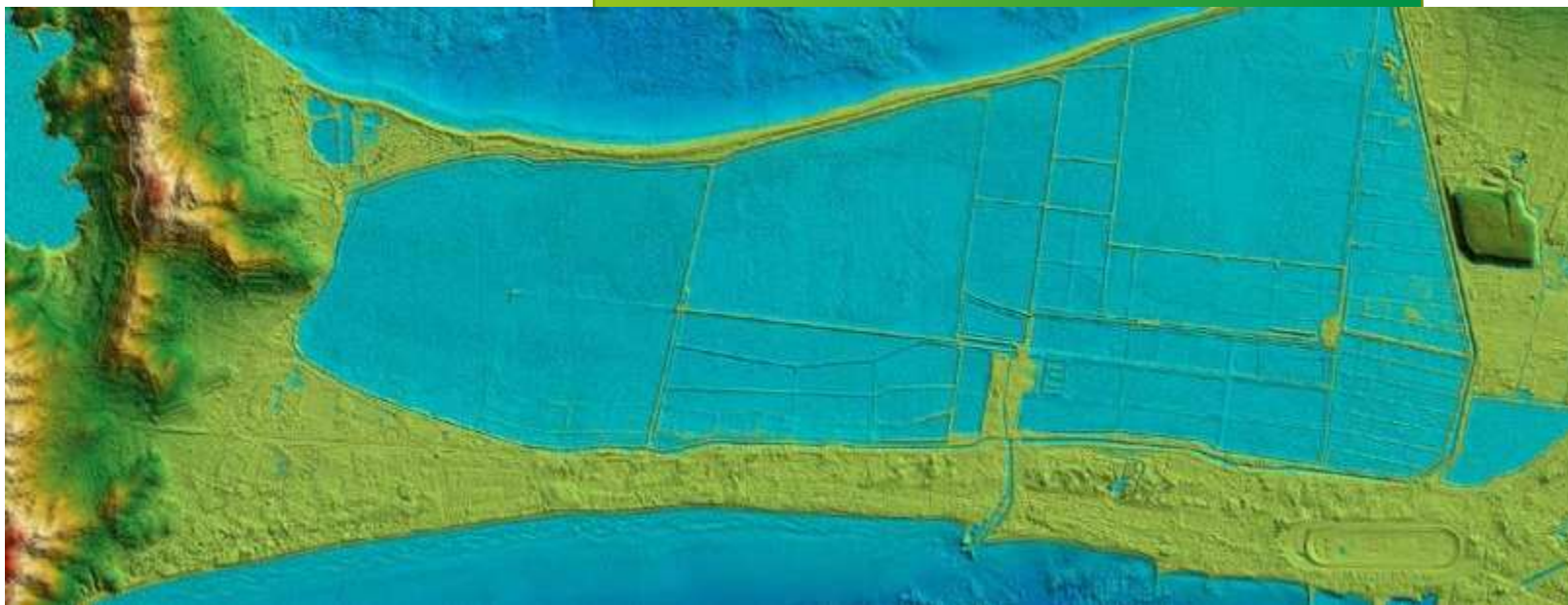
- 📍 We have worked mainly from a list of candidate data sets
 - 📍 Not enough knowledge about these candidates for some themes
- 📍 Work still on-going
 - 📍 No decision for last themes in annex III
 - 📍 Remaining doubts on some data sets
 - 📍 Some general criteria to decide if “national”, “regional” or not
 - 📍 But mainly case by case decisions



INSTITUT NATIONAL
DE L'INFORMATION
GÉOGRAPHIQUE
ET FORESTIÈRE

THANKS FOR YOUR
ATTENTION

ign.fr



© IGN-SHOM



SP4/AA.xxx