



SUSTAINABLE AND SMART CADASTRE

PERMANENT COMMITTEE ON CADASTRE, BUCHAREST, 6-7 JUNE 2019

LANTMÄTERIET



CADASTRE, LAND REGISTRATION AND GEODATA


- A BASIS FOR THE SOCIETY

- 
- A scenic view of a coastal town, likely in Sweden, featuring colorful houses (red, yellow, white) built on a hillside overlooking a body of water. Several boats are docked in the harbor, and the water is blue with gentle ripples. The sky is light blue with some clouds.
- Sweden is divided into just over 3.6 million properties. Securing of ownership and boundaries for these assets.
 - Almost everything can be linked to a place. Providing the community with current geodata.



Mapping Sweden since 1628

CADASTRE, LAND REGISTRATION AND GEODATA



Cadastral services

Is responsible for the division into property units and also decides about joint property units, easements, utility easements and infrastructure cadastral procedures.



Land registration

Examines, decides about and register:

- ownership
- site leaseholds
- mortgages
- use rights
- community associations
- notes

also decides about and collects stamp duties and handling charges.



Geographic and Land Information

Collects and provides geographical information and property information.

SOME FACTS ABOUT LANTMÄTERIET



Appr. 2 200 employees



Offices in 50 places

We handle large volumes of cases



Cadastral services: ca **12 500** cases per year

Land registration: ca **950 000** cases per year

Lantmäteriet transfers the following amounts to the Treasury

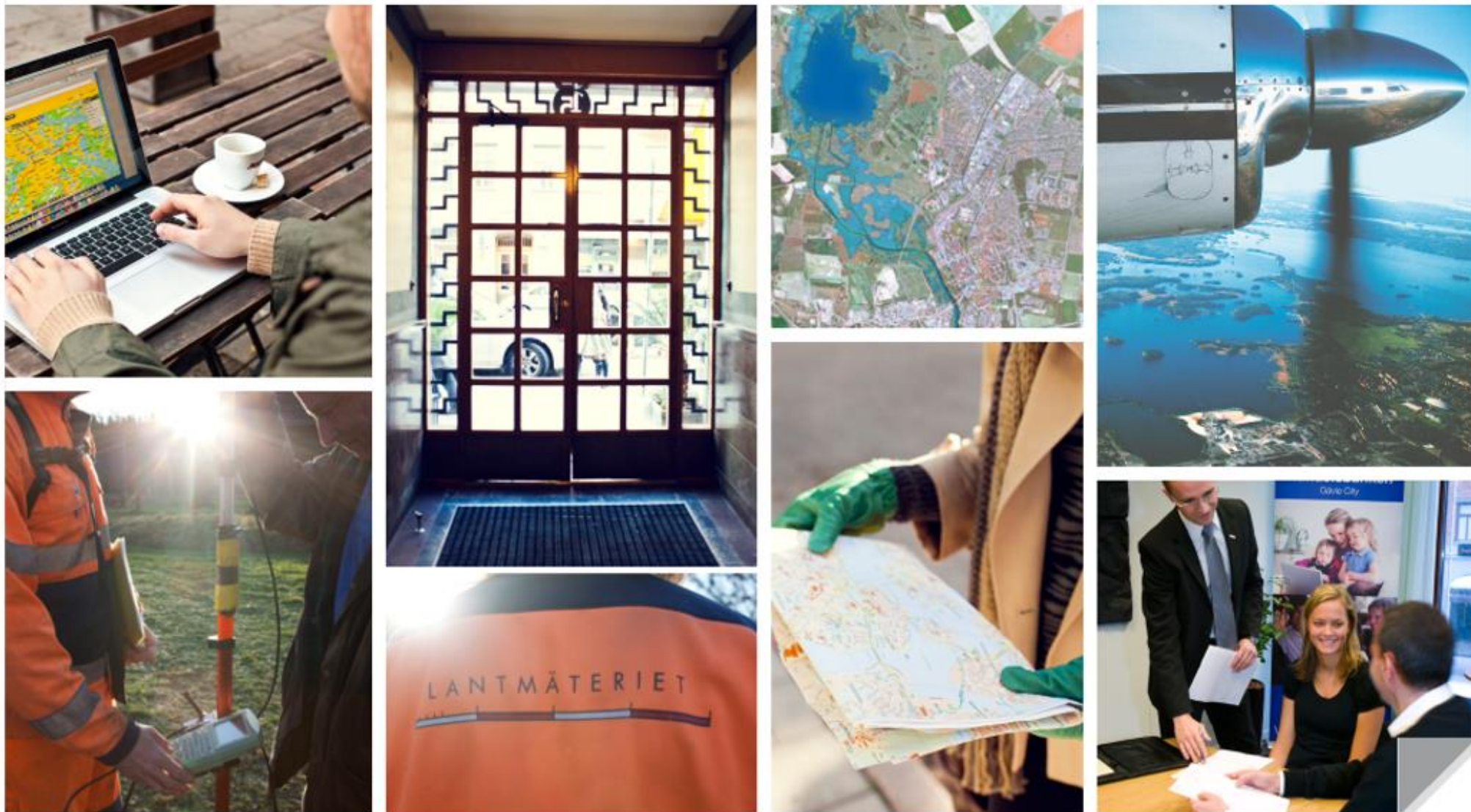
11,8 billions SEK in stamp duties

260 miljons SEK in handling charges

Lantmäteriets business volume: 1,9 billions SEK

Total amount of mortgage: 5,443 trillions SEK

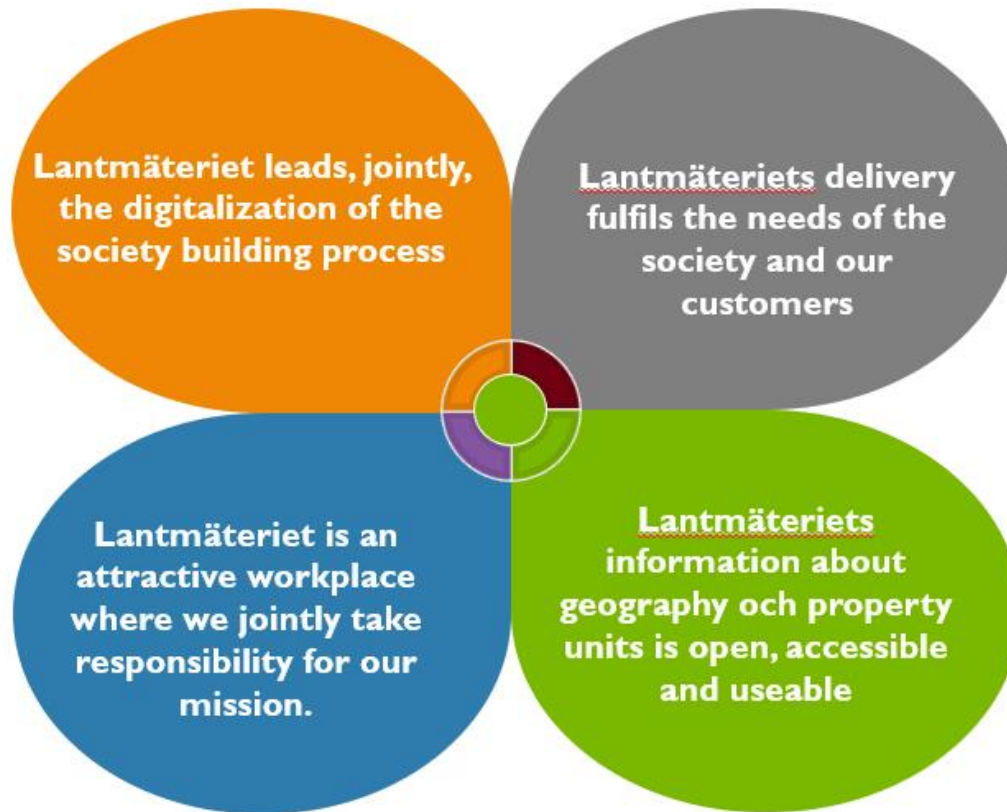




Lantmäteriet's contribution to the society

ACCESS TO GEODATA

STRATEGIC GOALS



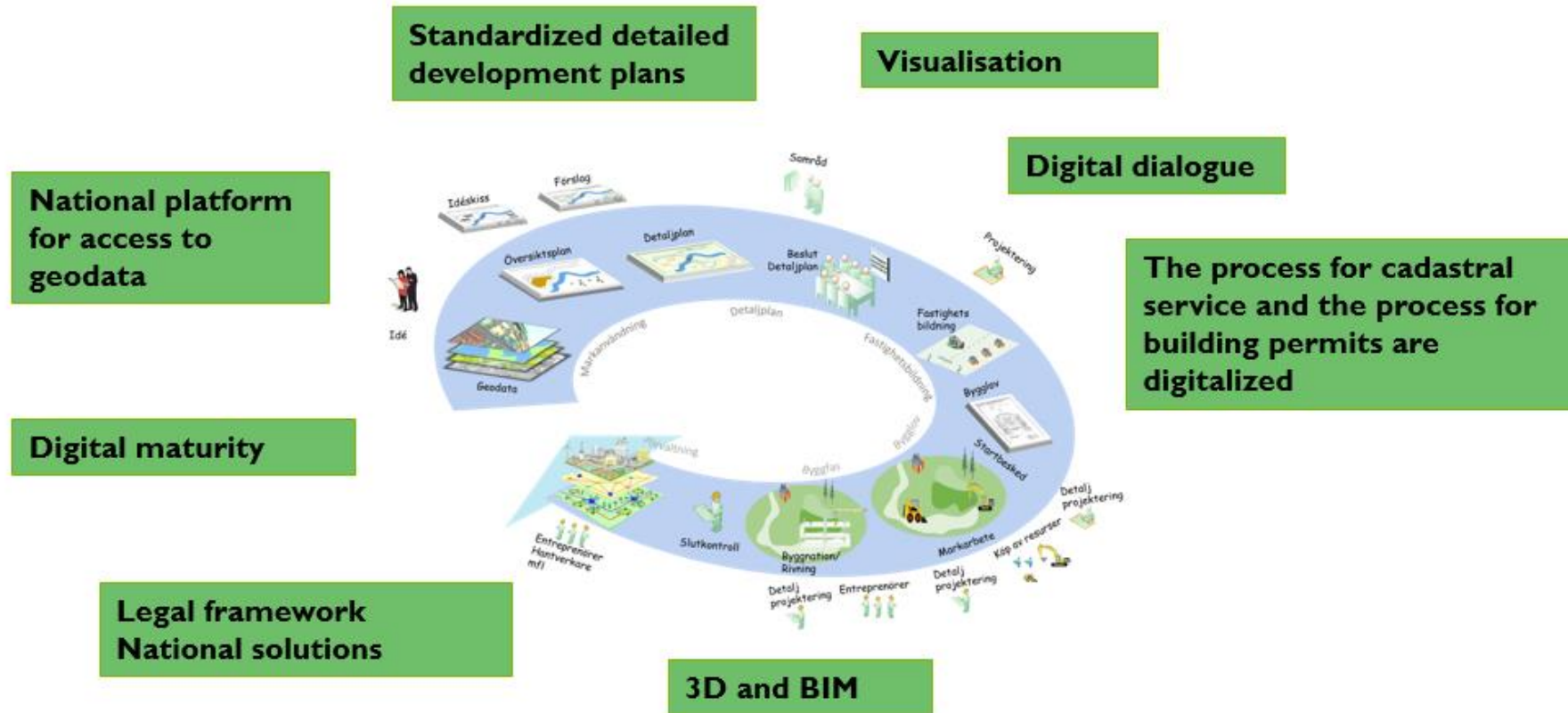
UP-TO-DATE GEODATA



IMPORTANCE OF GEODATA



SMARTER PLANNING AND BUILDING PROCESS



	Customer needs	Examples	
	Private housebuilding	A private person wants to build a house	
	Private land and property development	A private person wants to adjust the form of her/his property unit by buying or selling land	
	Commercial and public land and property development	A company wants to build rental flats or condominiums	
	Agriculture and forestry	A farmer wants to develop his/her farm by adjusting the form of her/his property unit by buying or selling land	
	Public services	A public operation wants to build a nursery school or a school	
	Infrastructure	A company or a public operation wants to build a power line	
	Joint facilities	Private persons, companies or public operations want to jointly use and manage a private road	

THANK YOU FOR YOUR ATTENTION!