

The Role of the Czech Cadastre in the Environment Protection Issue

Jaroslav Bačina

PCC Conference and Plenary Meeting, Helsinki 2019

Introduction:

- Czech Cadastre
 - Recorded objects
 - Information systems
 - Data attributes
- Nature and Landscape Protection
 - Categories of the specially protected areas
 - Legal background
- Ministry of Agriculture, State Land Office
 - Land Consolidation

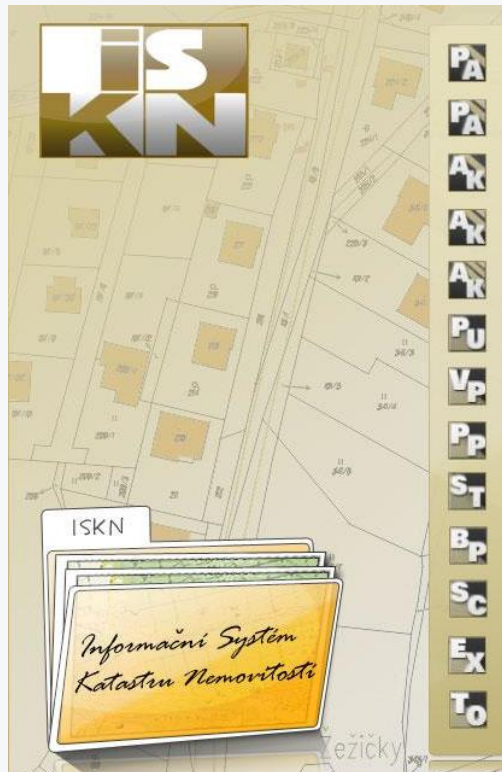
Czech Cadastre:

- Legal framework: Act No. 256/2013 on Cadastre of Real Estates
- Definition of the Czech Cadastre – source of data for
 - protection of legal rights to land,
 - tax purposes,
 - protection of the environment etc.

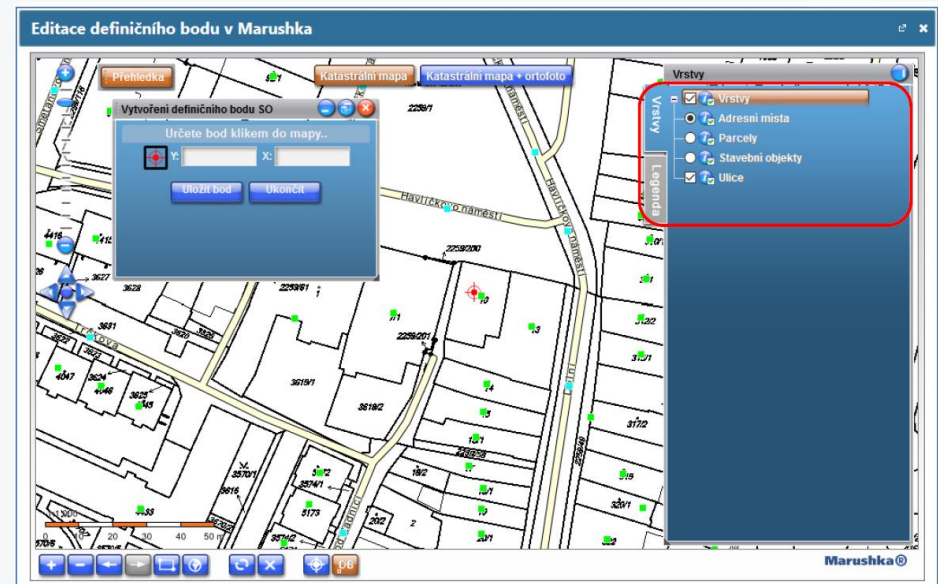


Two massive information systems:

ISKN - Information System of the Cadastre of Real Estates

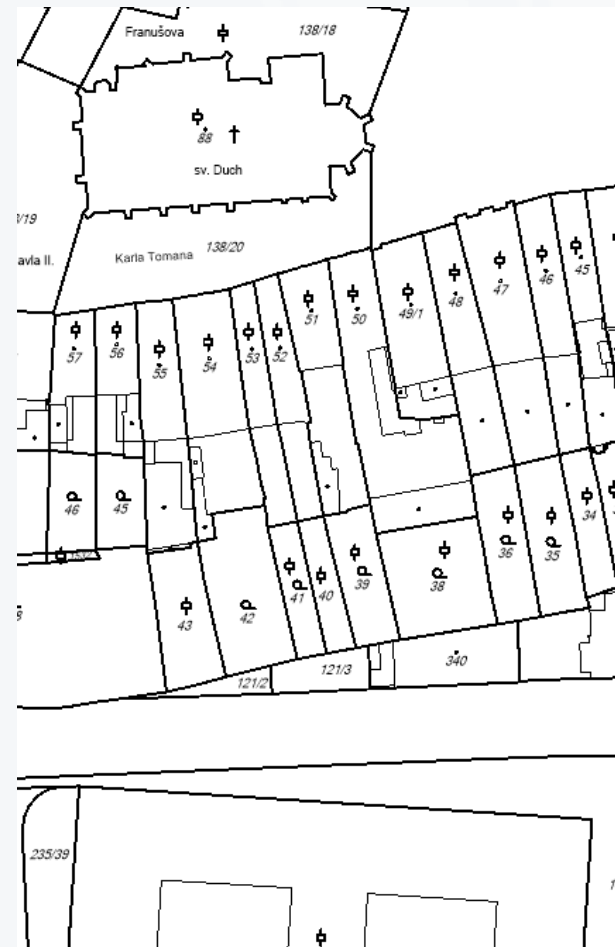


RÚIAN - the Register of Territorial Identification, Addresses and Real Estate



Czech Cadastre:

- Municipalities 6,258
- Buildings 4 million
- Apartments 2 million
- Plots of land 23 million
 - Agricultural land 11 million
 - Water area 1 million
 - Forests 2 million
 - Build-up area 4 million
 - Others 5 million



Records in the Cadastre:

The specially protected areas are recorded in descriptive data with its attributes

Typ	Zkrácený název typu ochrany	Kód způsobu	Zkrácený název způsobu ochrany
1	ochrana přírody a krajiny	6	národní park - I. zóna
		7	národní park - II. zóna
		8	národní park - III. zóna
		9	ochranné pásmo národního parku
		10	chráněná krajinná oblast - I. zóna
		11	chráněná krajinná oblast - II.-IV. zóna
		12	národní přírodní rezervace nebo národní přírodní památka
		13	přírodní rezervace nebo přírodní památka
		14	ochr. pásmo jiného zvlášť chrán. území nebo pam. stromu
		34	evropsky významná lokalita
		35	ptačí oblast

... a map key
in graphic data

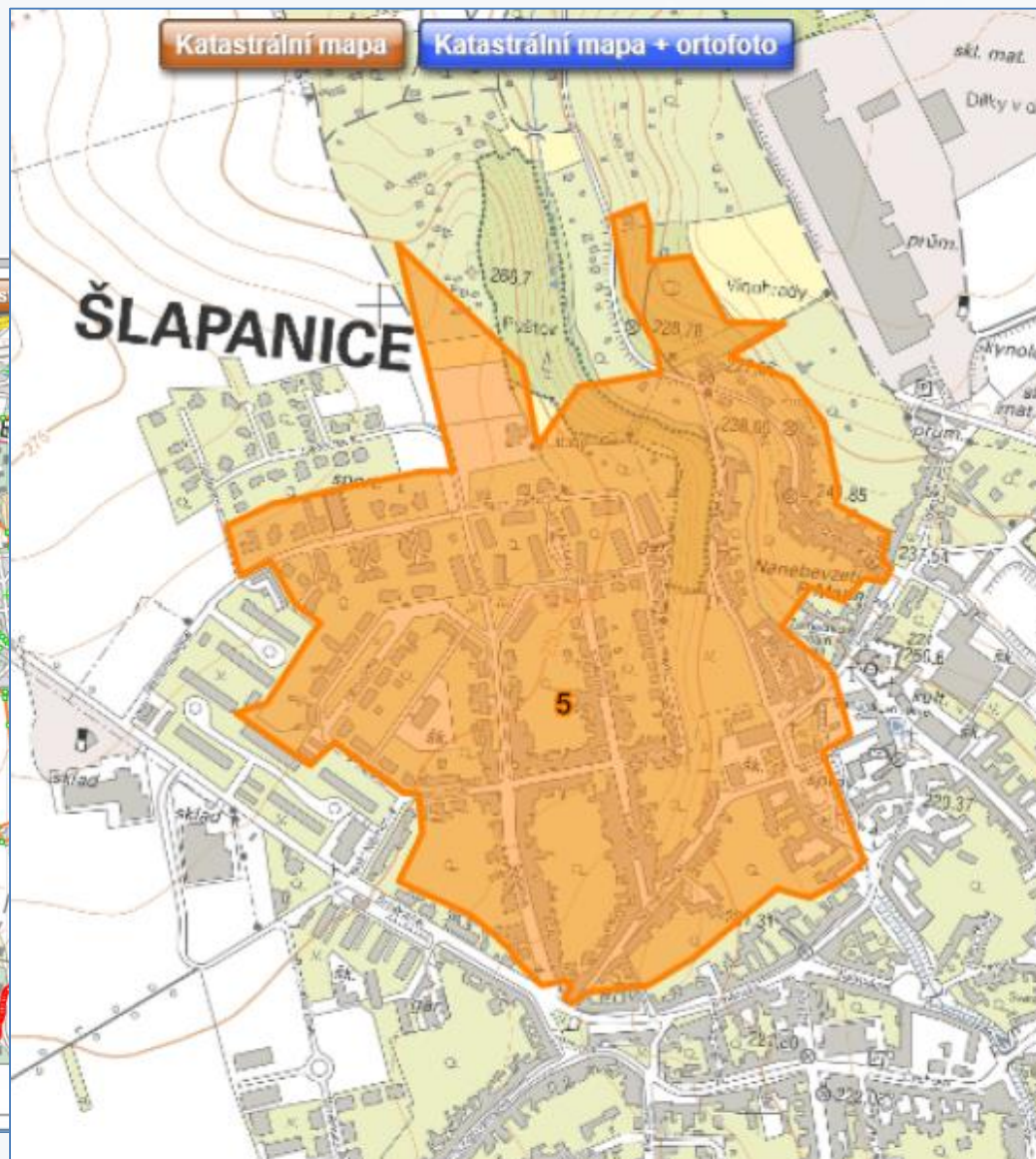
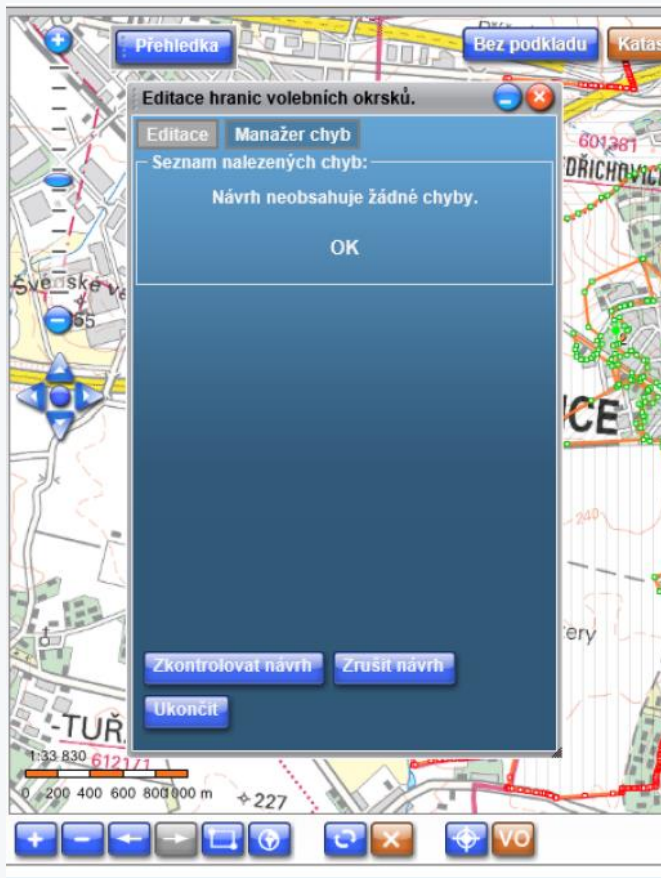
Poř. číslo	Předmět	Značka	Příklady použití	Poznámka
2.23	Hranice chráněného území	— — — — —		čára 0.181
2.24	Hranice ochranného pásma	— — — — —		čára 0.191

RÚIAN

contribution to the e-government

- the Basic Registry Act, No 111/2009 Coll.
- editors – municipalities, building offices, environment protection bodies, Czech Statistical Office, ...
- RÚIAN contains also data about special territorial features, which help to define the special territory determined by any legal act.
- special territorial features created in 2020:
 - protected landscape areas and their protective zones,
 - sites of Community importance,
 - bird areas,
 - memorable trees and their protective zones.

RÚIAN



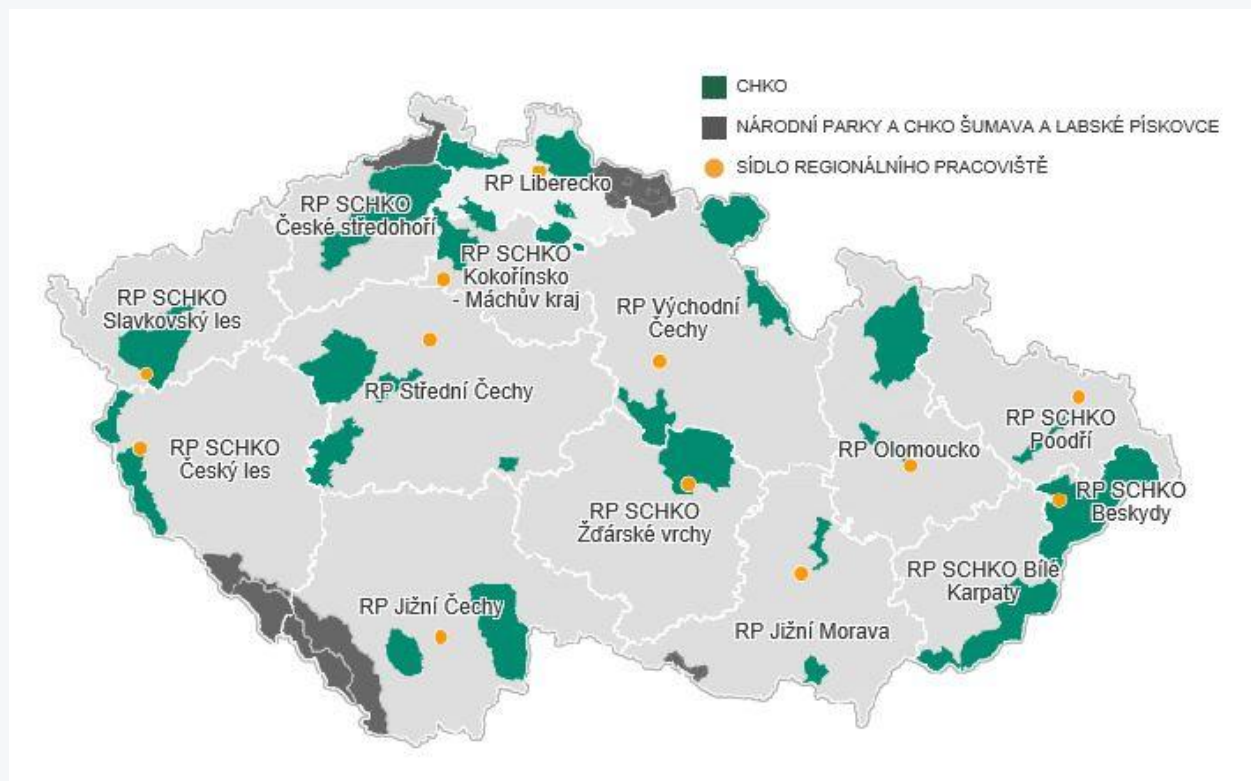
the Act No. 114/1992 Coll. on Nature and Landscape Protection

The categories of the specially protected areas shall be:

- a) national parks,
- b) protected landscape areas,
- c) national nature reserves,
- d) nature reserves,
- e) national natural monuments,
- f) natural monuments.

**All the
categories are
recorded in
the Cadastre**

National parks, protected landscape areas and regional offices



the Act No. 114/1992 Coll. on Nature and Landscape Protection

Section 45e
Bird Areas

**Bird Areas
Delimited**

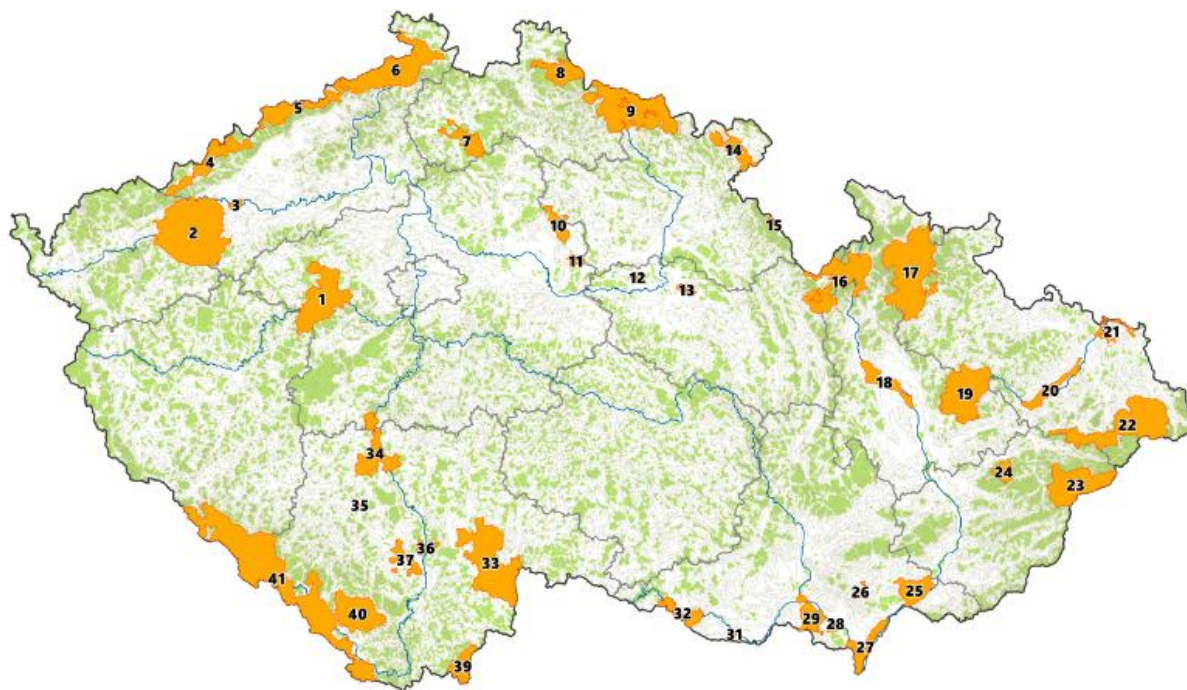
(1) Territories most suitable, from the point of view of the occurrence, state and levels of their populations, for the protection of the species of birds occurring on the territory of the Czech Republic and specified by the legislation of the European Community, set out by the Government in a government order, shall be delimited as bird areas.

(2) The bird areas shall be delimited by the Government in a government order...

the Act No. 114/1992 Coll. on Nature and Landscape Protection

Bird Areas

- 41 areas
- 7 035 km²



the Act No. 114/1992 Coll. on Nature and Landscape Protection

Section 32

Property Rights to Certain Property in National Nature Reserves



No
sales

Forests, forest land resources, watercourses, expanses of water, and unbuilt-on lands on the territory of national nature reserves, state owned on the day of entry of this Act into force, cannot be alienated. This shall not influence the rights of natural and legal persons according to regulations on the restitution of property.

the Act No. 114/1992 Coll. on Nature and Landscape Protection

Section 60

Expropriation and Obligatory Transfer of Competence to Manage a Property

**Expropriation
possibilities**

(1) In cases set out by a separate regulation, it shall be possible to expropriate a real property or rights to it with the purpose of nature and landscape protection.

(2) In the case of expropriation pursuant to paragraph 1, it shall be proceeded according to separate regulations on expropriation, and this shall be done on the basis of a proposal of a nature protection authority.

the Act No. 114/1992 Coll. on Nature and Landscape Protection

Section 61

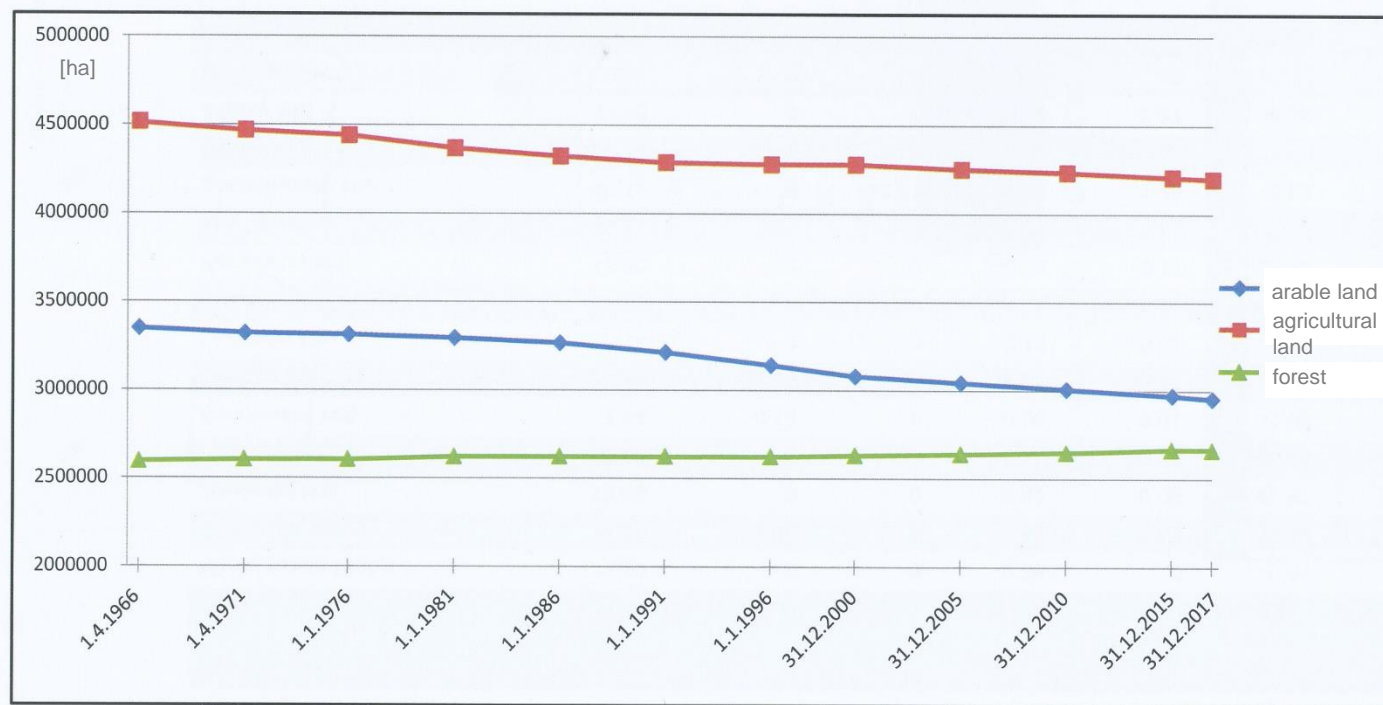
Pre-emptive Right of the State and Financing of Land Purchase

**Pre-emptive
Right exercised**

Owners of unbuilt-on lands located outside settlement formations on the territory of national parks, national nature reserves and national natural monuments, and owners of lands connected with caves, shall be obliged, in the case of their intended sale, first to offer these lands for sale to a nature protection authority. If the nature protection authority does not show, in writing, a binding interest in these lands within 60 days of the day of receipt of the offer of the land, then the owners may effect the intended sale.

Statistics:

- A line graph to visualize the forested and agricultural areas and arable land over time



Ministry of Agriculture, Ministry of the Environment

The Ministry of the Environment is the central state administrative authority and supreme inspection authority in environmental affairs.

The Ministry of Agriculture - the central body of the State administration of agriculture, water management, the food industry and forest management, hunting and fishing outside the National Parks.

Water Management

We take care of water-courses and protect against floods and drought

The Ministry of Agriculture's priorities are protection against floods and drought and support for the development of the water supply and sewerage systems. Water flows are taken care of by means of the state-owned enterprises, Vltava River Board, Elbe River Board, Morava River Board, Odra River Board, Ohře River Board and Lesy ČR (Forests of the Czech Republic). We are strengthening the safety of water flows and waterworks, we support the cleaning of ponds, and we provide the main supervision in the field of water supply and sewerage systems for public use with regard to protecting consumers and the long-term sustainability of the sector.

Forestry

We take care of forests

Forests are a national wealth and form an irreplaceable component of the environment. By means of the Lesy ČR state enterprise, we manage half of the forests in the Czech Republic. Forests are managed in a sustainable manner and all the functions of forests are supported.

Soil

We protect the soil and settle land ownership rights

Soil is the most valuable natural treasure. Our goal is to protect the soil and to use it wisely. We also want to ensure that our agriculture is based on sound principles, those being absolutely clear property relations for farmers managing the soil.

The Common Agricultural Policy

We successfully develop the European model of agriculture

Within the framework of the Common Agricultural Policy, we seek to increase the competitiveness of agriculture in the Czech Republic and to reduce the administrative burden for farmers and the state administration. The Ministry of Agriculture's priority is also rural development, while preserving and improving the environment and ensuring a good standard of living for our farmers. Agricultural activity is an integral part of rural areas, which deserve our care and support.

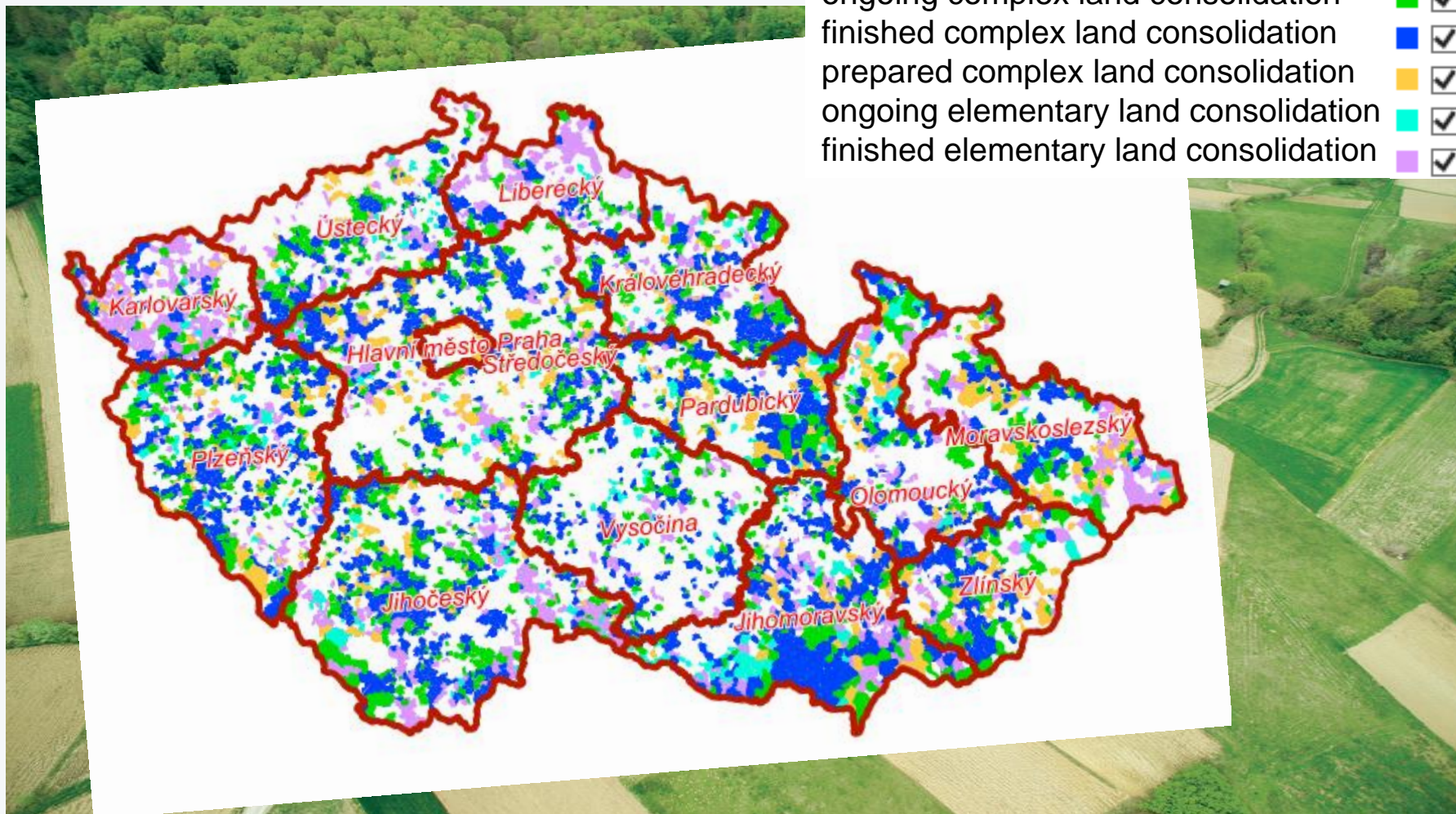
State Land Office



- Land Consolidation
- Territorial System of Ecological Stability - mutually interconnected complex of both natural and altered, but nearly natural, ecosystems, which maintain natural balance - network of local (bio)corridors linking local biozones (1 to 3 hectares).

Land consolidation completed → records into the Cadastre

Land Consolidation



Thank you for your attention.

