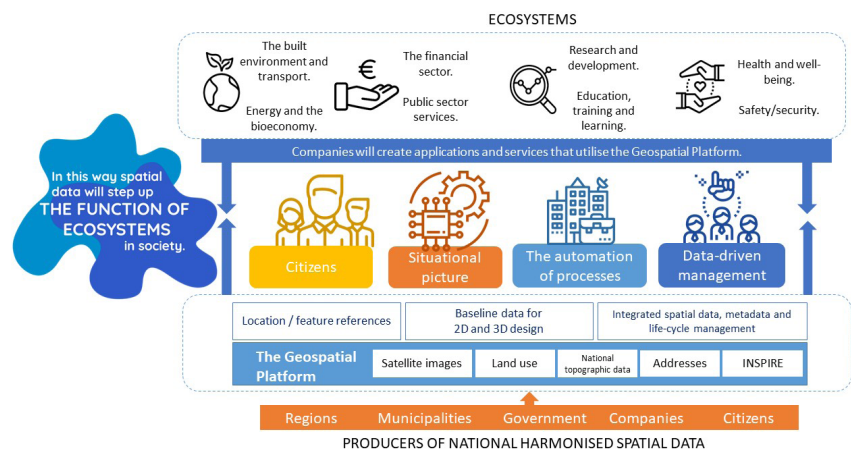


Finland

Finland's geospatial platform enables management of data from different providers

Finland's new geospatial platform enables the management of distributed data sources with work now taking place to include 3D data and addresses.



The three-year government project, which was completed at the end of 2019, was a collaboration between the Ministry of Agriculture and Forestry, the Ministry of Environment, the National Land Survey of Finland, and the Finnish Environment Institute. The services are now available at beta.paikkatietoalusta.fi.

The focus of the platform is to manage the quality and lifecycle of distributed data from different data providers, such as municipalities, using common data models as a basis. Data models are now available for buildings, road network, hydrography and addresses, as well as as a pilot for land cover and use. In addition, the Government has started a new project to establish a new building platform and register for Finland.

The key services developed in the geospatial platform project include;

- 1 A quality guard which allows automated quality checking of the logical consistency rules for municipal buildings and regional plans.
- 2 An upload service and life-cycle management for municipal building information.
- 3 National INSPIRE implementations.
- 4 A crowdsourcing application for collecting building entrances and waypoints, and for reporting possible errors.
- 5 National redirection service.
- 6 National geospatial search using the different names by which a place is known as well as the contents of the national registries which have been implemented. It also supports general search engines such as Google.
- 7 A table Joining Service for edge-matching data.
- 8 Data cards for geospatial names with linked data.
- 9 New data viewing services: National Land Survey of Finland maps with vector tiles; and national satellite mosaics based on Sentinel 1 and 2 images.
- 10 New data download services based on OGC API Features.
- 11 A geocoding service based on addresses, geographical names, cadastral IDs and map sheets.
- 12 The Suomigrammi Dashboard which enables users to access, geospatial statistics from the platform.
- 13 An indexing service pilot to manage buildings and addresses by administrative and statistical areas.

National Land Survey of Finland is now continuing the development of the National Topographic Database and the new address register which are part of the platform. A key target is to add municipality data, correct data according to the new data model and to create new 3D building data for all of Finland. This will be based on new laser scanning which started in 2020.