



# Digital dimension of the Recovery and Resilience Programme and relevant results from ELISE

*Francesco Pignatelli & Peter Ulrich*

**Joint Research Centre, European Commission**

*Ispra & Seville, 10 November 2021*

# Content

- What is the European Commission's Joint Research Centre?
- How does the Recovery and Resilience Facility help modernise Europe's public sector with digital technologies?
- What can we learn from the ELISE programme for Europe's recovery and resilience?

# What is the European Commission's Joint Research Centre?



# JRC Mission

As the science and knowledge service of the European Commission our mission is to support EU policies with independent evidence throughout the whole policy cycle.

# JRC sites

Headquarters in **Brussels**  
and research facilities located  
in **5 Member States**:

- Belgium (Geel)
- Germany (Karlsruhe)
- Italy (Ispra)
- The Netherlands (Petten)
- Spain (Seville)



# JRC role

- **Independent** of private, commercial or national interests
- **Policy neutral:** has no policy agenda of its own
- Works for more than **20 EC policy departments**



How does the Recovery and Resilience Facility help modernise Europe's public sector with digital technologies?

# The Recovery and Resilience Facility

- €723.8 billion in loans and grants to support reforms and investments in Member States.
- Mitigate economic and social impact of Covid19 pandemic; make European economies and societies more sustainable and resilient.
- In force from 19 February 2021 until 31 December 2026.



[https://ec.europa.eu/info/business-economy-euro/recovery-coronavirus/recovery-and-resilience-facility\\_enconomy-euro/recovery-coronavirus/recovery-and-resilience-facility\\_en](https://ec.europa.eu/info/business-economy-euro/recovery-coronavirus/recovery-and-resilience-facility_enconomy-euro/recovery-coronavirus/recovery-and-resilience-facility_en)



# The Digital Dimension of the RRF

- Speed up the recovery in Europe and reinforce the commitment to the twin transition: green and digital.
- National plans need a minimum of 37% of expenditure for climate investments and 20% of expenditure to foster the digital transition.

**RECOVERY AND RESILIENCE FACILITY**

## Twin Transitions: Green and Digital

Each recovery and resilience plan will have to include

a minimum of	<b>37%</b> of expenditure	for <b>CLIMATE</b> investments and reforms	a minimum of	<b>20%</b> of expenditure	to foster the <b>DIGITAL</b> transition
--------------	------------------------------	---	--------------	------------------------------	---

The Commission will assess national plans against these targets.



[https://ec.europa.eu/info/business-economy-euro/recovery-coronavirus/recovery-and-resilience-facility\\_enconomy-euro/recovery-coronavirus/recovery-and-resilience-facility\\_en](https://ec.europa.eu/info/business-economy-euro/recovery-coronavirus/recovery-and-resilience-facility_enconomy-euro/recovery-coronavirus/recovery-and-resilience-facility_en)

# Public sector digitalization in the RRF

- Creation of European flagship areas for investments and reforms.
- Commission strongly encouraged Member States to put forward investment and reform plans in 7 areas.
- Digitalization of public administration one of the 7 flagship areas.



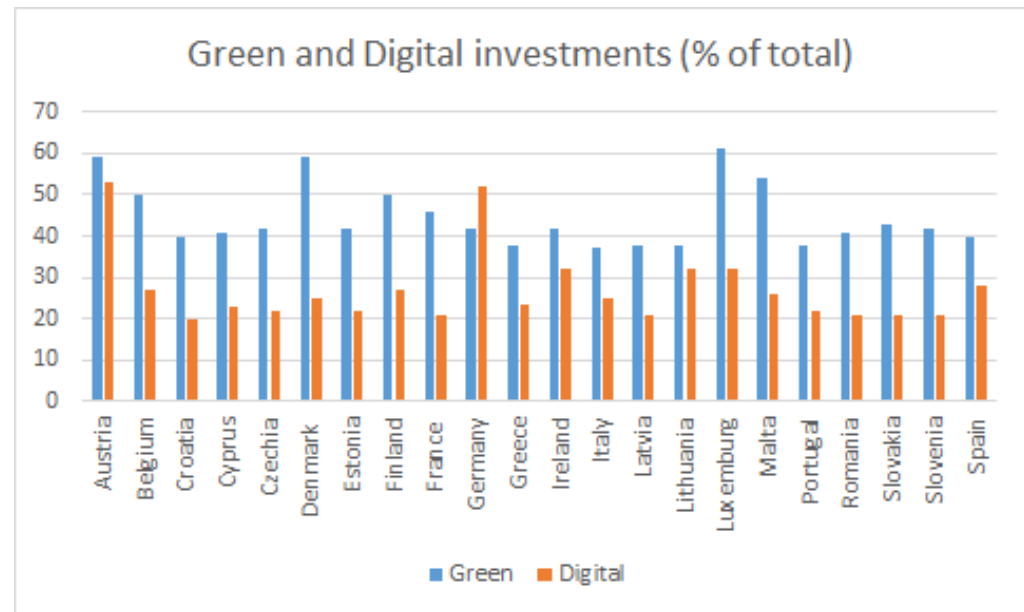
[https://ec.europa.eu/info/business-economy-euro/recovery-coronavirus/recovery-and-resilience-facility\\_enconomy-euro/recovery-coronavirus/recovery-and-resilience-facility\\_en](https://ec.europa.eu/info/business-economy-euro/recovery-coronavirus/recovery-and-resilience-facility_enconomy-euro/recovery-coronavirus/recovery-and-resilience-facility_en)

# Analysing the national plans: overview

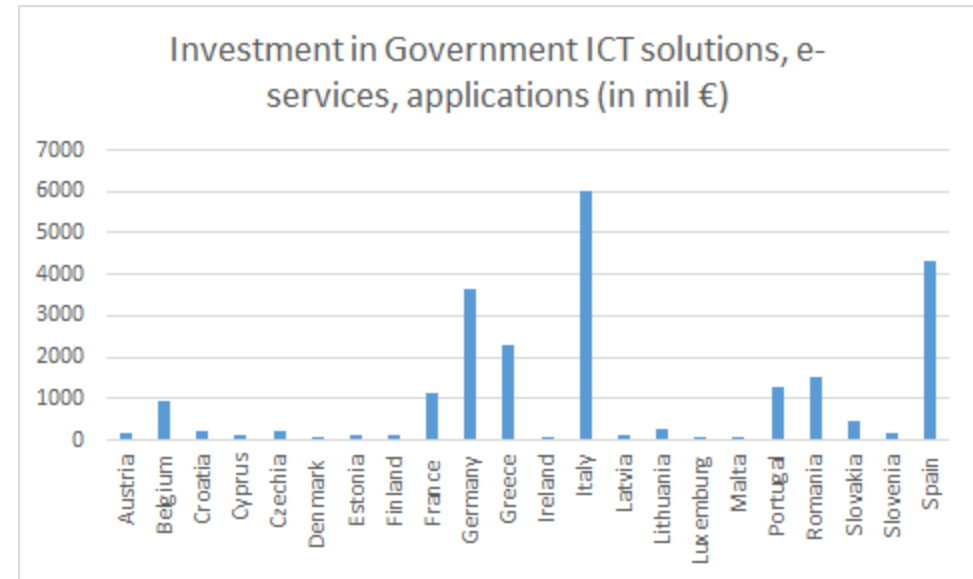
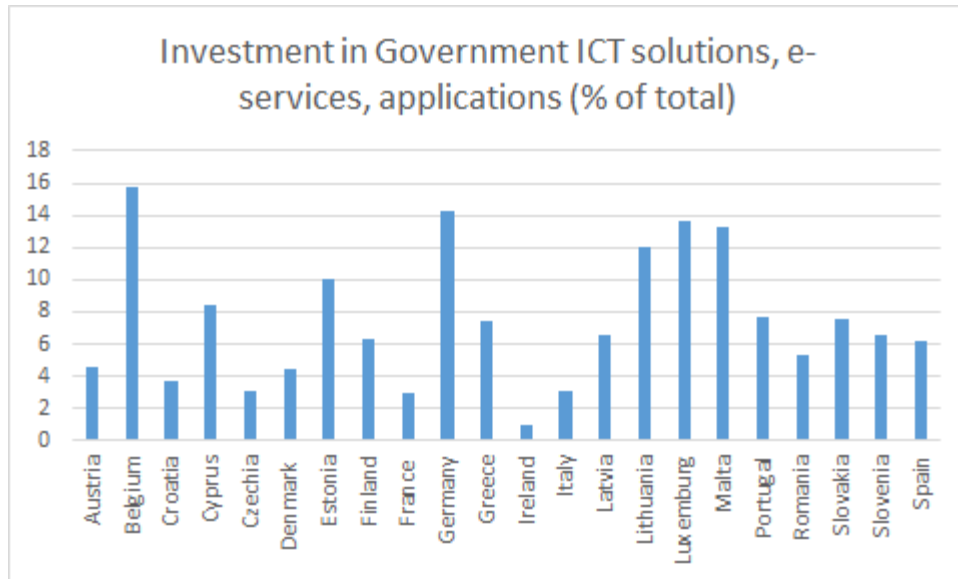
## Total investments

Country	bn €	Country	bn €
Austria	3.5	Ireland	0.989
Belgium	5.9	Italy	191.5
Croatia	6.3	Latvia	1.8
Cyprus	1.2	Lithuania	2.2
Czechia	7	Luxemburg	0.093
Denmark	1.5	Malta	0.316
Estonia	0.969	Portugal	16.6
Finland	2.1	Romania	29.1
France	39.4	Slovakia	6.3
Germany	25.6	Slovenia	2.5
Greece	30.5	Spain	69.5

## Share of green and digital



# Analysing the national plans: public sector



# Main messages from analysing national plans

- Until 2026, about 23bn euro will be spend on digitalizing the public sector
- Depending on the priorities of the different national plans, national mapping, cadaster and land registry authorities will be impacted
  - > great challenge as well as great opportunity
  - > experiences of mapping, cadaster and land registry authorities in creating interoperable, impactful, digital services is needed

What can we learn from the  
ELISE Action for Europe's  
recovery and resilience?

# A BIT OF HISTORY...

2004

IDABC: Interoperable Delivery of European eGovernment Services

2010

ISA: Interoperability solutions for public administrations

Actions:

EULF  
ARE3NA

2016

ISA<sup>2</sup>: Interoperability Solutions for European Public Administrations, Businesses and Citizens

ELISE

2021

DIGITAL: Digital Europe Programme

ELISE builds upon the outcomes of the former ISA actions EULF and ARE3NA. It is the only action of the ISA<sup>2</sup> Programme, aiming to improve Digital Government through Location Interoperability.

European Commission

## WHAT?

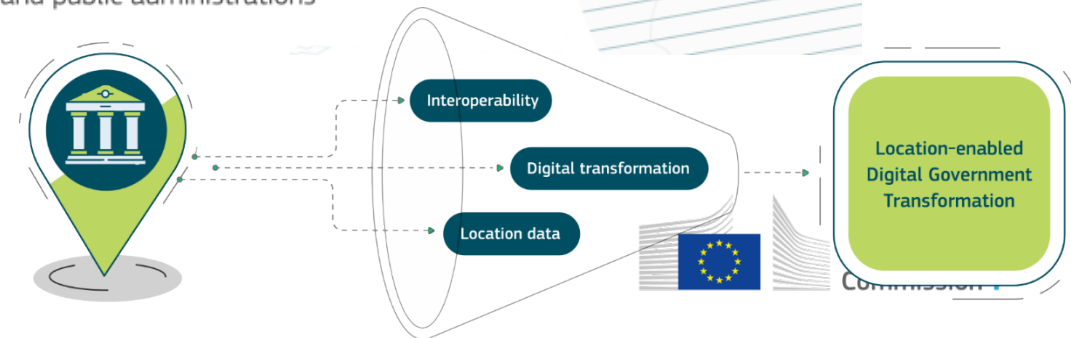
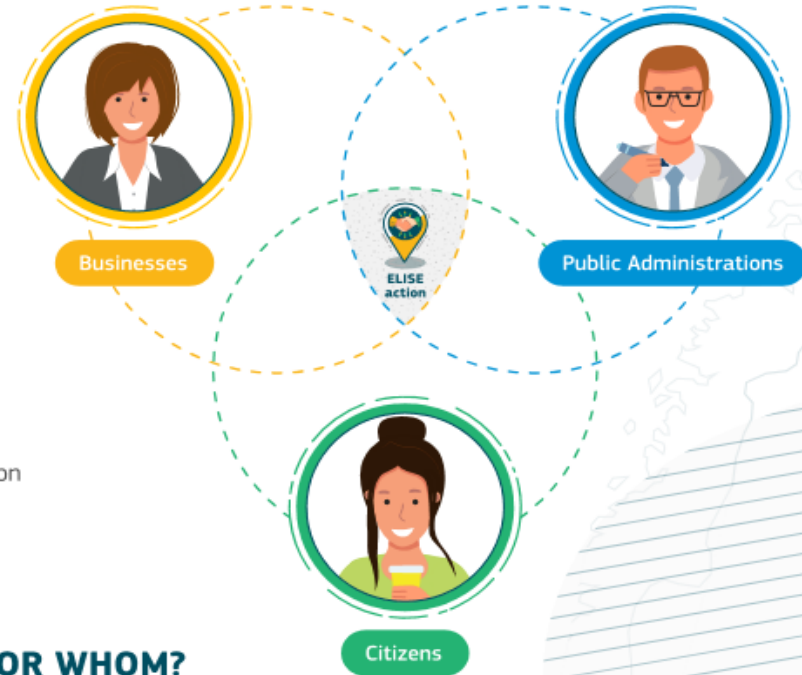
ELISE stands for **E**uropean **L**ocation **I**nteroperability **S**olutions for e-Government. It is one of the more than 50 actions in the European Interoperability Programme ISA<sup>2</sup>.

## WHAT FOR?

To support Digital Government Transformation by making the best use of location data and technologies in an interoperable manner

## FOR WHOM?

For all: citizens, businesses and public administrations



ISA<sup>2</sup>

## ELISE outputs and topics

## ELISE impact in numbers

More than 10,000 interactions with ELISE over the past 6 years



STUDIES

41 Studies



FRAMEWORKS AND SOLUTIONS

1 Framework (Guidance/Monitoring)  
11 Solutions



APPLICATIONS

6 Applications



GEO KNOWLEDGE  
BASE SERVICE

52 Webinars / 22 Workshops

Evolution of Spatial Data Infrastructures

Support of data ecosystems

Technologies for location-enabled innovation

Collaboration models

Spatial skills for Digital Government Transformation

Location data privacy

Improving access to spatial datasets

Supporting cross-border and cross-sector data sharing

Location intelligence for policy and digital public services

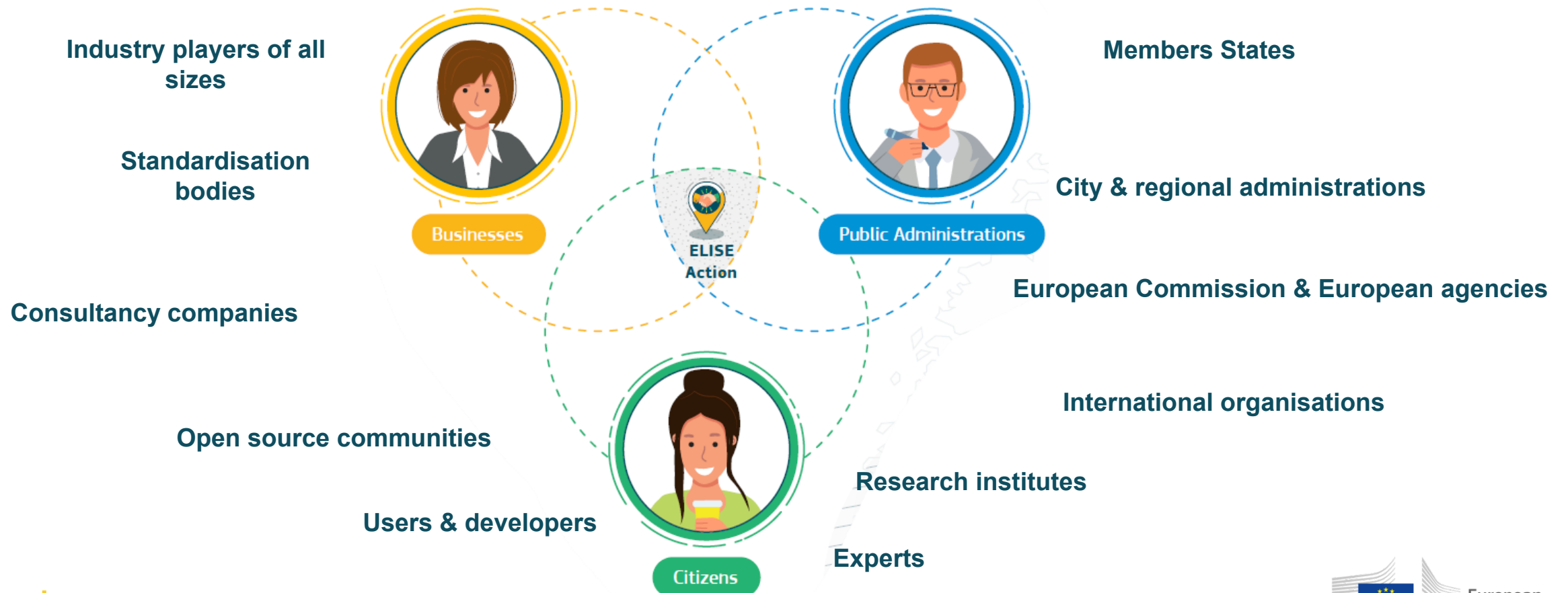
Supporting innovation, growth and Return of Investment

Managing data quality

Supporting the creation of common EU public services



# For and with a varied stakeholder community



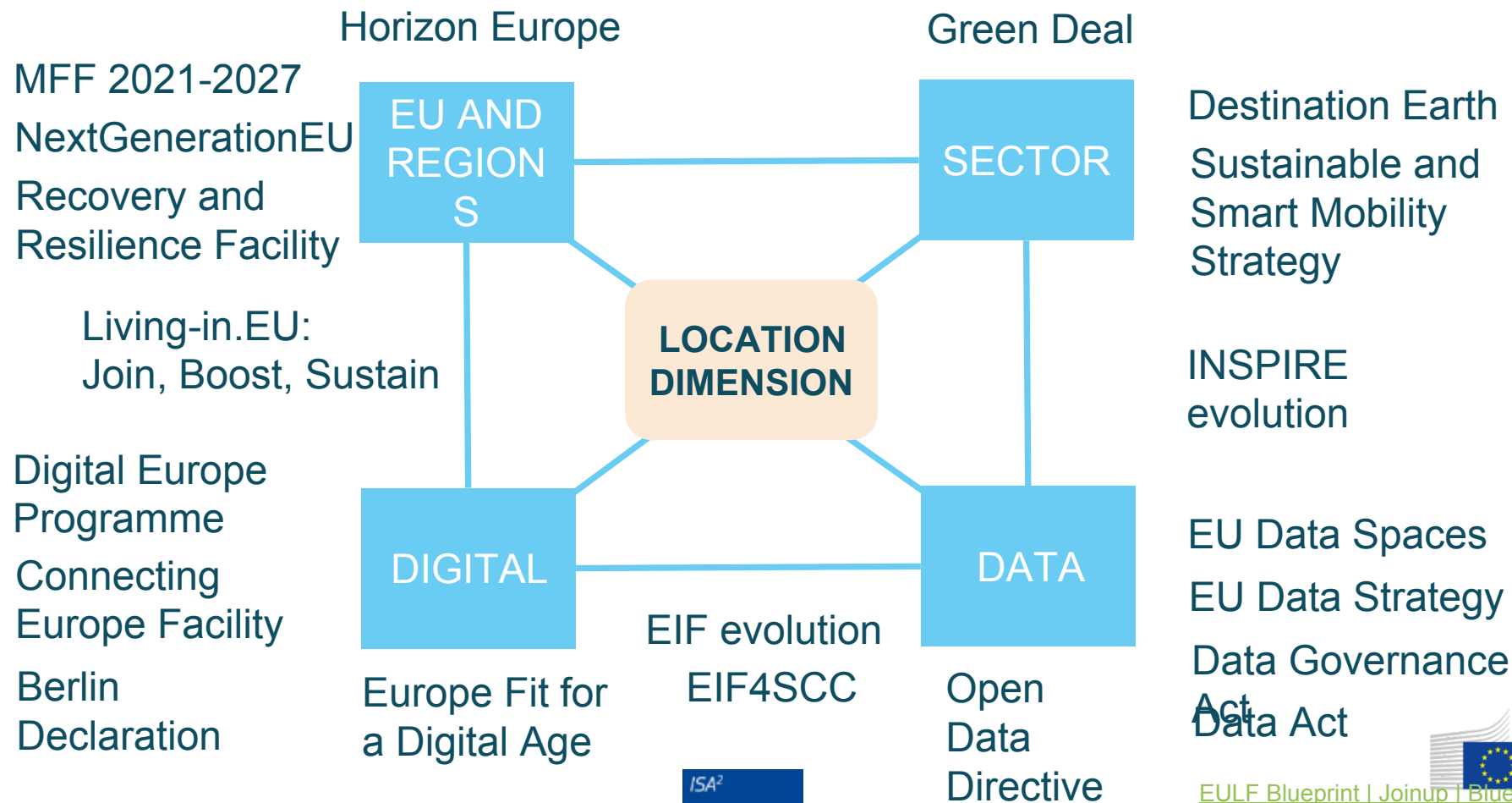
## Some ELISE achievements

- ✓ **Complemented EIF and NIFO** with a location interoperability framework (**EULF Blueprint**) and **state of play assessment (LIFO)**
- ✓ **EULF Blueprint cross-reference with UN-GGIM** Integrated Geospatial Information Framework (IGIF)
- ✓ Helped put the **INSPIRE Directive into practice** with tools for data providers (e.g. **Reference Validator, Re<sup>3</sup>gistry**)
- ✓ Built a **large community of** European and international **stakeholders**
- ✓ Raised awareness on **new approaches to** location-enabled **digital government transformation**
- ✓ **Assessed role of SDIs** in future business models, e.g. **data ecosystems, digital platforms**
- ✓ **Assessed new policies** (e.g. GDPR, European Data Strategy) and **technologies** (e.g. APIs, AI, blockchain)
- ✓ Promoted and facilitated better links on **location data** between **public and private actors**
- ✓ Helped generate value from public sector location data through **assessing barriers and solutions, providing guidance on benefit realisation, and best practice illustrations**

## Some lessons learnt

- **Location interoperability framework and guidance (EULF Blueprint) in combination with monitoring mechanism (LIFO) provide sustainable support to the Member states in achieving location interoperability for better digital public services delivery**
- **Location aspects** often well recognised in policy and strategic digital frameworks
- **Knowledge transfer support is** seen as **vital** to make the most of ‘location’ assets in the **new policy landscape** for all types of stakeholders
- **Preserving the community dealing with the location interoperability** will assure better knowledge sharing among the stakeholders and increase their skills and competencies.
- **Closer engagement with digital government and private sector users** across all levels of society will help ‘raise the game’.

# Location interoperability in the future EU policy context



# Building on ELISE for the Digital Europe Programme

## Digital Europe Programme Themes



High performance computing



Cloud, data and AI



Cybersecurity



Advanced digital skills

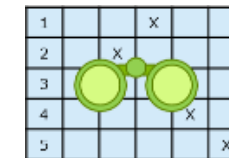


Accelerating best use of technologies

## European Location Intelligence and Technological Enablers



EULF Blueprint



LIFO



Data Spaces Cookbook



Sandboxing



Interoperability Academy

## Common Services Platform



ETF Validator



Re3gistry



# Keep in touch



EU Science Hub: [ec.europa.eu/jrc](https://ec.europa.eu/jrc)



@EU\_ScienceHub



EU Science Hub – Joint Research Centre



EU Science, Research and Innovation



EU Science Hub



EU science

# Thank you



© European Union 2021

Unless otherwise noted the reuse of this presentation is authorised under the [CC BY 4.0](https://creativecommons.org/licenses/by/4.0/) license. For any use or reproduction of elements that are not owned by the EU, permission may need to be sought directly from the respective right holders.

Slide 2: © Jukan Tateisi – unsplash.com