

# “Role of National Mapping, Cadastre and Land Registry Authorities in Resilience and Recovery program “

Magdalena Andersson and Gunnar Ersbo

## Real Property Register – a crucial component



REPUBLIC OF SLOVENIA  
MINISTRY OF THE ENVIRONMENT  
AND SPATIAL PLANNING  
THE SURVEYING AND MAPPING AUTHORITY  
OF THE REPUBLIC OF SLOVENIA

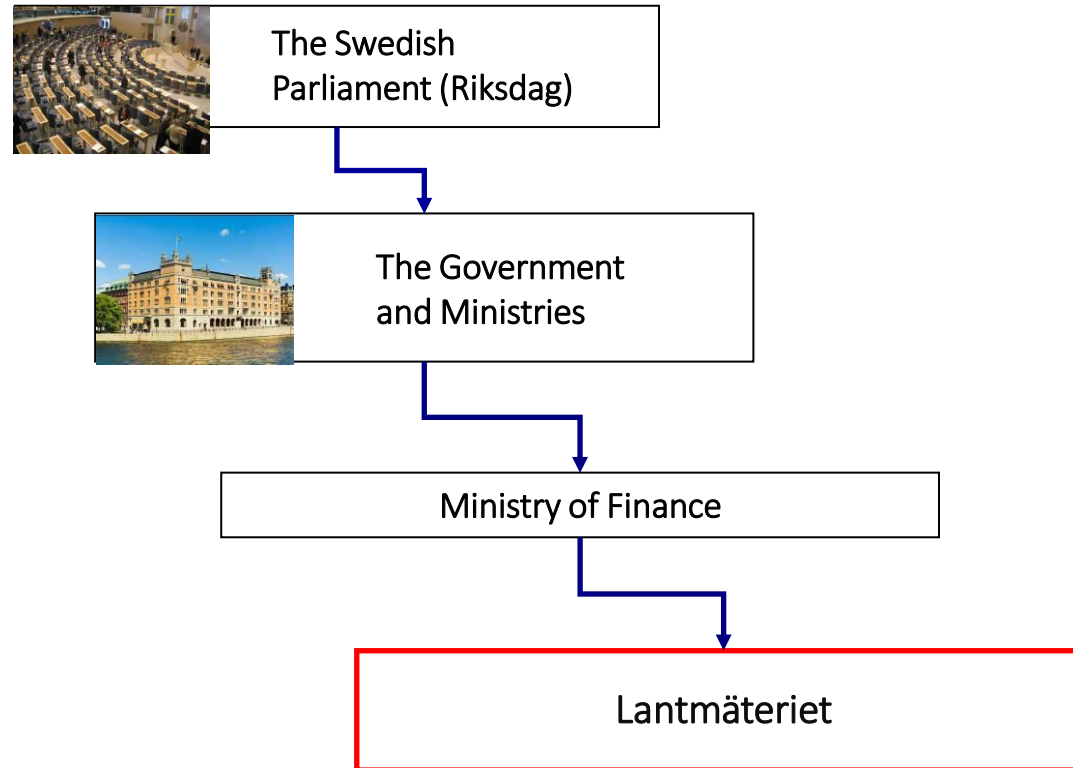


# Agenda

1. Lantmäteriet
2. Co-operation
3. Real Property Register
4. Geographic information
5. Examples and challenges

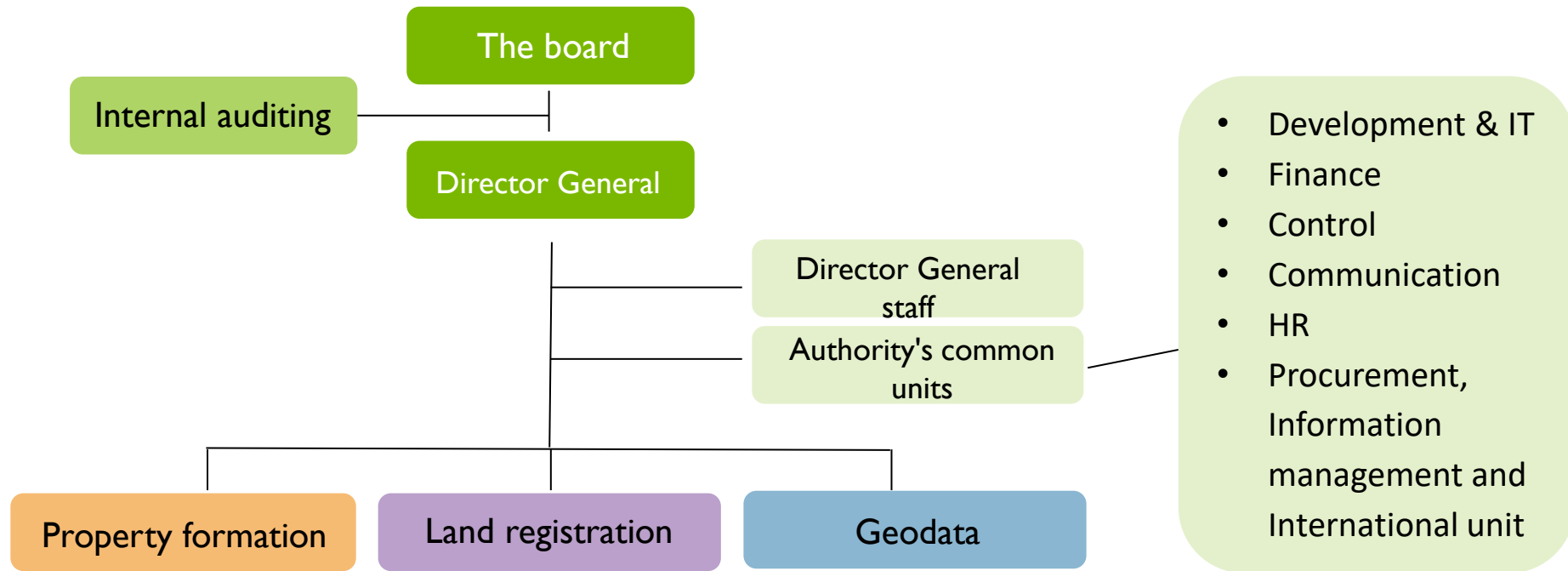
“Role of National Mapping, Cadastre and Land Registry Authorities in Resilience and Recovery program “

# Lantmäteriet



“Role of National Mapping, Cadastre and Land Registry Authorities in Resilience and Recovery program “

# Organization



“Role of National Mapping, Cadastre and Land Registry Authorities in Resilience and Recovery program “

# Co-operation

- Municipalities
- County councils and Governmental authorities
- Geodata Council
- Private Sector e.g., information providers and different user groups

“Role of National Mapping, Cadastre and Land Registry Authorities in Resilience and Recovery program “



# Real Property Register

Some characteristics :

Cadaster and land register are integrated, plans and regulations included, co-operation with municipalities and governmental authorities as to the information, basis for the economy, publicity of ownership, complete all over the country, digital accessible in many ways depending on use.

On-going development, two examples:

Geometrix – project to integrated text and map information as one object. New technical solution is developed, will give possibilities for presenting e.g., 3-D

New solutions for supply of information, consuming services

“Role of National Mapping, Cadastre and Land Registry  
Authorities in Resilience and Recovery program “



# Geographic data

Topographic data – program for image supply, laser scanning, management of data

Co-operation with other authorities in the management of data e.g.: - road network, hydrography in network, addresses, buildings

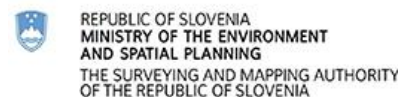
Place names

On-going development, two examples:

Modern topographic information – project

Laser data, increasing demand on quality for forestry use

“Role of National Mapping, Cadastre and Land Registry  
Authorities in Resilience and Recovery program “



# Examples and challenges

## Examples;

- Calculate flooding and prevent risk for landslides Göta älv
- Geocell- complete mobile office for contingency planning for e.g., wildfires including printing of maps
- First data set in the national platform – all new detail plans will be digital from 2022-01-01, more datasets will be added e.g., building information under 2022.
- Real Property Register and topographical information – basis for fact-based decisions,
- Cooperation between authorities and other parties (user and customer needs)

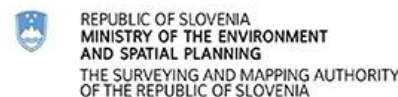
## Challenges

Interconnection between Land registers in Europe, looking into the project from Sweden

Anti money laundering – Lantmäteriet is obliged to report suspicious activities

Recovery – resilience, broadband, charging poles for electric cars

“Role of National Mapping, Cadastre and Land Registry  
Authorities in Resilience and Recovery program “





# 8. More challenges

## Challenges;

- Increasing demands of the quality in the RPR and in the cadastral index map for e.g., planning and building processes, machine control e.g., logging, harvesting, adapted fertilizing of soil
- Wishes to extend or link RPR with further information e.g., marine and environmental information. Development work is needed in the area.
- Today's legislation needs to be adapted to a digitized working methods
- Rising demands of security e.g., personnel, register information, approval of images
- Preparing for test of digitalization e.g., historical documents by using AI
- Tests of new technologies e.g., crowdsourcing of boundary marks by using smartphones

“Role of National Mapping, Cadastre and Land Registry Authorities in Resilience and Recovery program “