



**NLS**  
NATIONAL  
LAND SURVEY  
OF FINLAND

# Finnish Perspective on How Land Administration Data Can Be Made to Good Use

**Conference and Plenary Meeting of the Permanent Committee on Cadastre in the European Union (PCC)**

**June 1, 2022**

**Pekka Halme**

Today's young people don't have the patience to handle the complicated formal procedures created by yesterday's young people.

They want fast, simple, and straight forward service.



# Cadastral, Land Register, Topographic Data - Cornerstone of the Society and Vital for Economic Activities

- Coverage, timeliness, trustworthiness, accuracy, interoperability...
- Key to usage of real estate (Cadastral, Land Register) data - or any data
- Open and free topographic data since 2012



# Adding Value to Cadastral Data

- Project to formalise the basic processes for improvement of data.
  - Use rights and servitudes of a real estate unit are given location
- A service will retrieve the location directly to map view.
  - Offers clear benefits to the customer.
- Legislation allows other authorities to update the Cadastre directly
  - Only National Enforcement Authority does this in the Land Register where it is available in cadastral activities.
- Plans to enable also the other relevant authorities are underway.

# Tools for Users to Access Data

- Mainly web services and API's, such as REST, WMS, WFS and also OGC API Features.
- User can get a map (an image) or actual cadastral data (GML, GeoJSON, XML).
- Several e-services to view data of your own property units, query owner of a property unit, register ownership, register a leasehold or other special right and order extracts and certificates.
- For professional users resellers of the cadastral data are central in offering services.
  - Use authorities' APIs and have web services, where they process data from various sources for end-users' needs.
  - Can also digitalise property transactions and offer services for digital property agreements using NLS document APIs.

Beside the traditional users, the police use the Cadastre when investigating financial crimes.

# “Boundary Mark Chase”

Project to test improving the location data of boundary mark information through crowd-sourcing

- Available to citizens in summer 2021
- More accurate location data collected using mobile phones.
- Web-based service, not a separate downloadable application.
- On the map view the boundary marks, on which we wanted more accurate location
- Ca 20 000 measurement results received → the project was considered successful.

Next project started early 2022.

- Goal to improve the accuracy of the mobile phone data from 3 m to 1 m through additional calculations using satellite data and correction factors.
- If successful potential tool for own production

# Cadastral and the Environment

Cadastral and Land Register contain

- no environmental information
- no building information
- only marginally land use planning information
- owner data

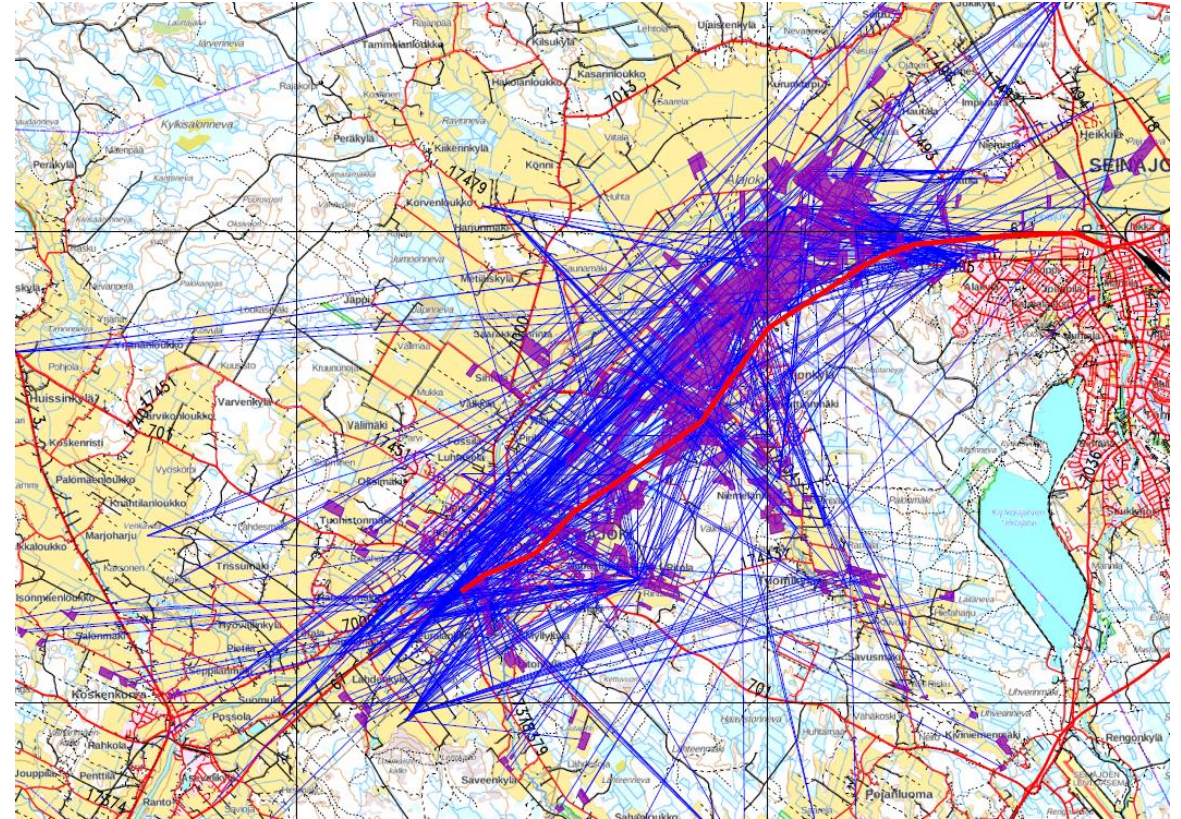
Add value when used with other databases like

- topographic and land use data
- soil data
- forest data



# Multiple Effects of Land Consolidation

- Decreasing production costs of farms not the only goal
- Good examples projects that affect e.g.
  - carbon emissions
  - traffic safety
  - vitality of the region.
- The benefits to the farmers, society and environment come hand in hand.



Straight-line distances from farm centres to their fields. You need to use the main road with an average daily traffic of 10 000 vehicles.

# Keeping Track on Land Use Changes – and Carbon Emissions

- Joint undertaking: Finnish Environment Institute, NLS, Natural Resources Institute Finland, Finnish Food Authority, Finnish Forest Centre (Jan 2021 – summer 2022)
- Improve the knowledge base describing land use and its changes for planning, decision-making, and reporting
- Create a common operating model for organisations producing land use information enabling regular monitoring of land use and its changes using data from different actors

2021 first time that the land-use sector was carbon negative

# Conclusions

- The cadastral data can be a part of the solution in many sectors
  - economy, logistics, land-use, infrastructure, emergency...
- When
  - data is of high quality, accessible, interoperable...
  - there is cross-sectoral cooperation
  - there is broad understanding of the possibilities



# Advancing together

