

kadaster



Cadastral data as a pivotal component for evidence-based decision making

Martin Salzmann

Netherlands' Cadastre, Land Registry and Mapping Agency

PCC Conference “Valorisation of Digital Cadastral Data
– Towards a More Sovereign, Effective, and Ecological European Model”
Paris, France, May 31- June 1, 2022



Cadastral data in times of challenging societal issues

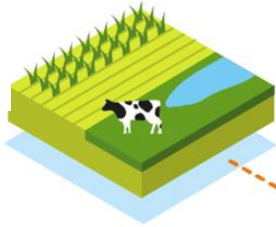
- Increasing need for and sharing of authoritative data
- Conflicting spatial demands for various societal issues
- Emergence evidence based planning, decision making, stakeholder participation, execution and monitoring
- The added value of cadastral data

Various issues compete for the same scarce space (I)

Climate adaptation



Agriculture

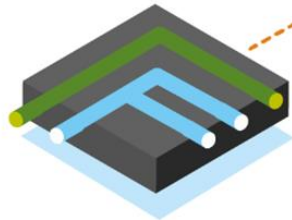


Energy transition

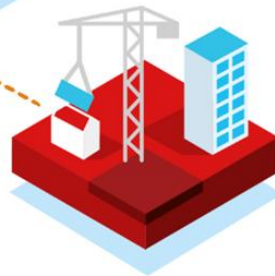


Thematic View

Infrastructures

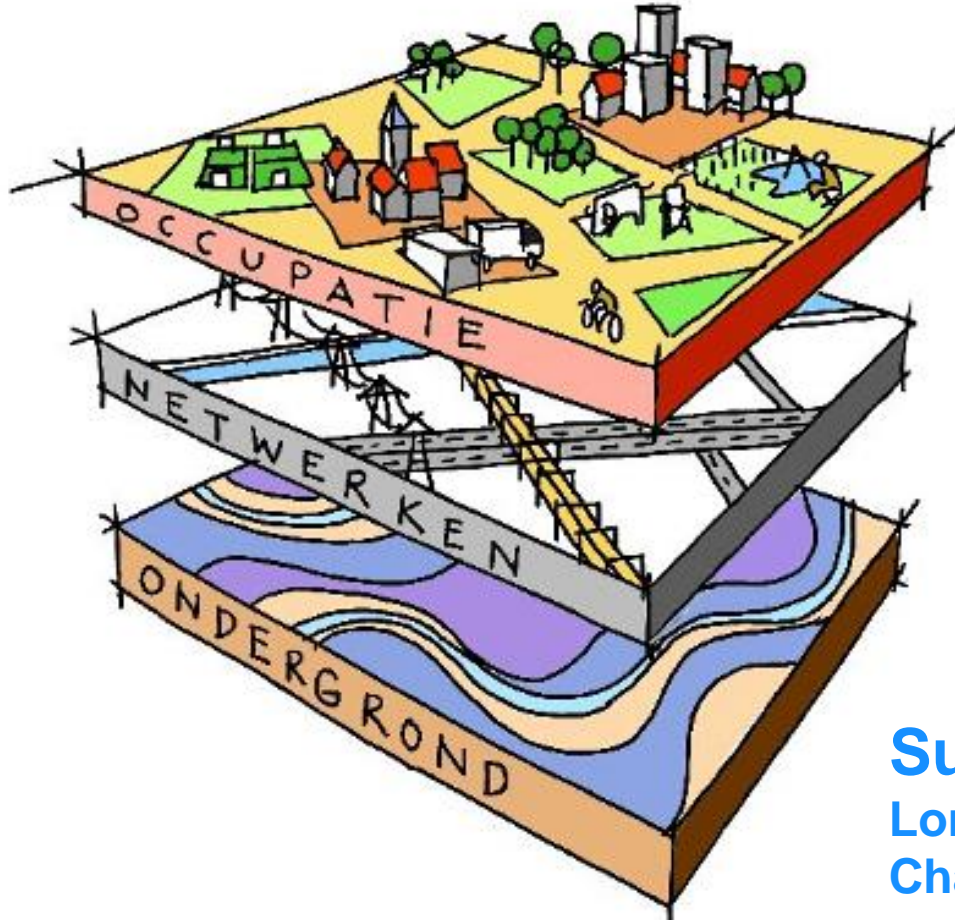


Housing





Various issues compete for the same scarce space(II)



Usage Layer

High rate of change
Changes usually take place within one generation (10-40 years)

Network Layer

High investments
Long term planning
Changes take 20-80 years

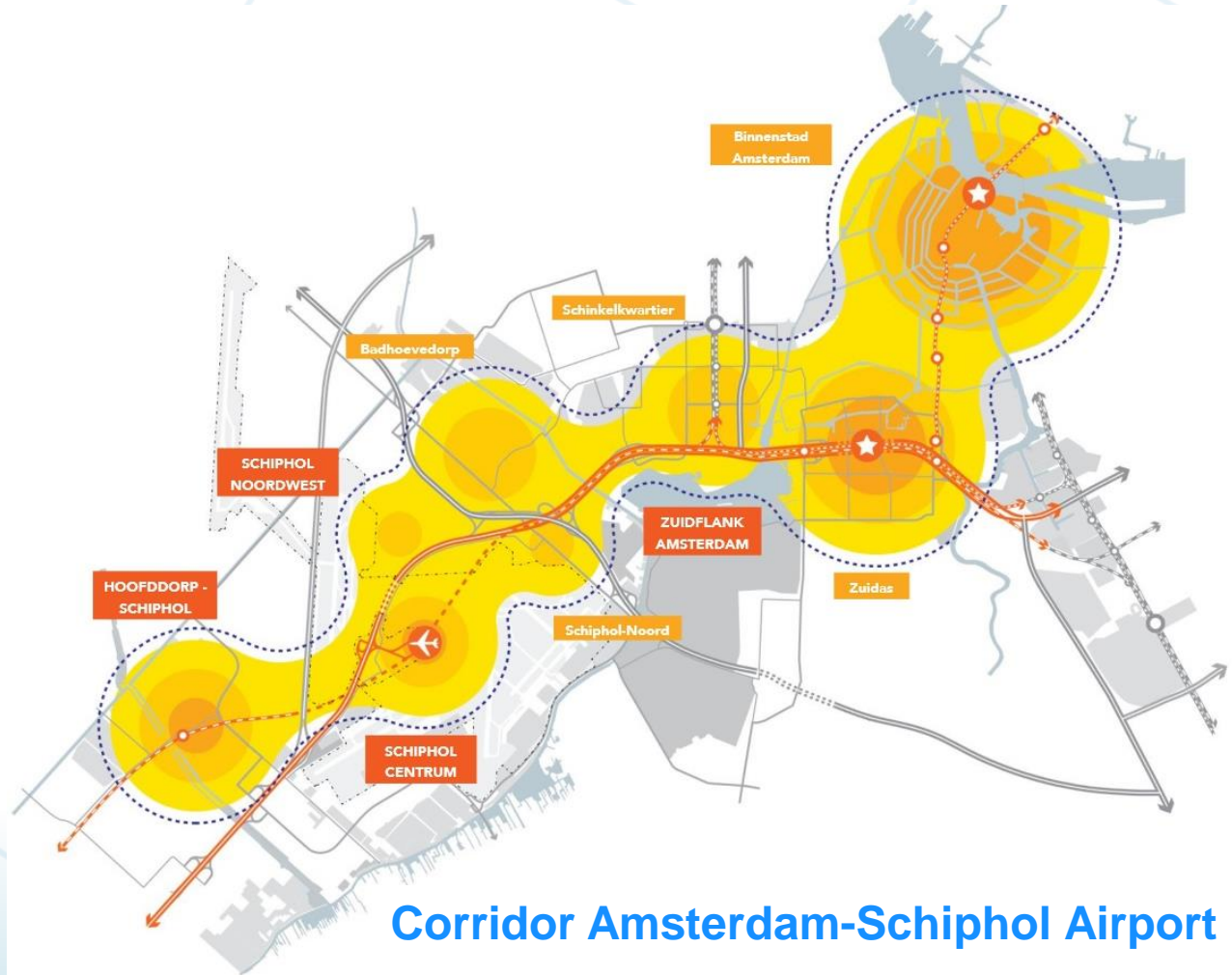
Subsoil

Long history and vulnerable
Changes take centuries

Physical View



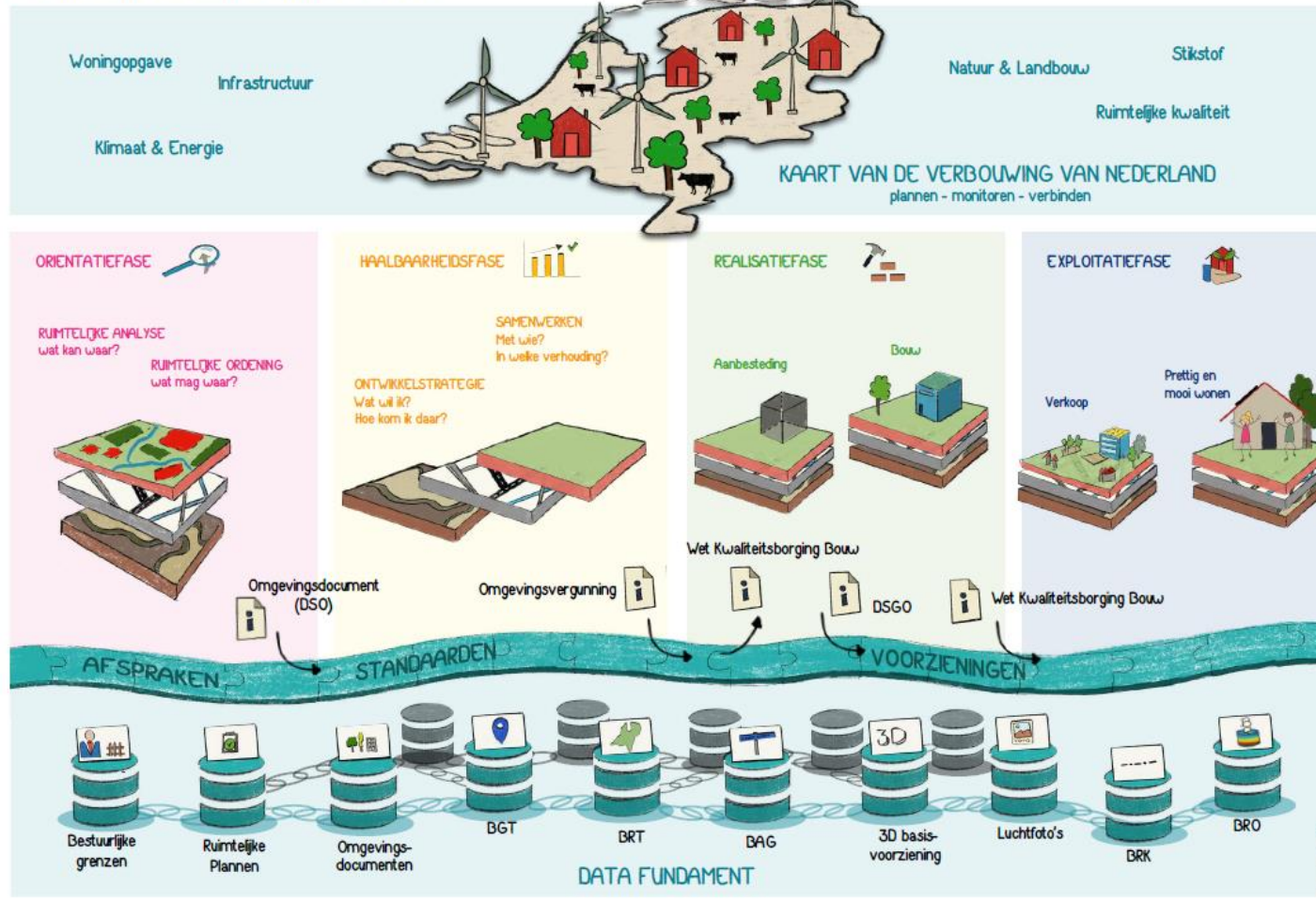
Various issues compete for the same scarce space(III)



Area-oriented View

Reconstruction of the Netherlands

REGIE OP HET GEHEEL VAN OPGAVEN



Political, national policies

Planning, Decision Making
Execution, Exploitation
provinces, municipalities

Stakeholders, Needs,
Participation

Agencies

REGIE OP HET GEHEEL VAN OPGAVEN



Coherence, Monitoring
Policy objectives

Complex world

Requires
integrated
decision making

Data foundation
as *shared* base:
connecting issues
easily accessible



Trust Framework, Standards, Services

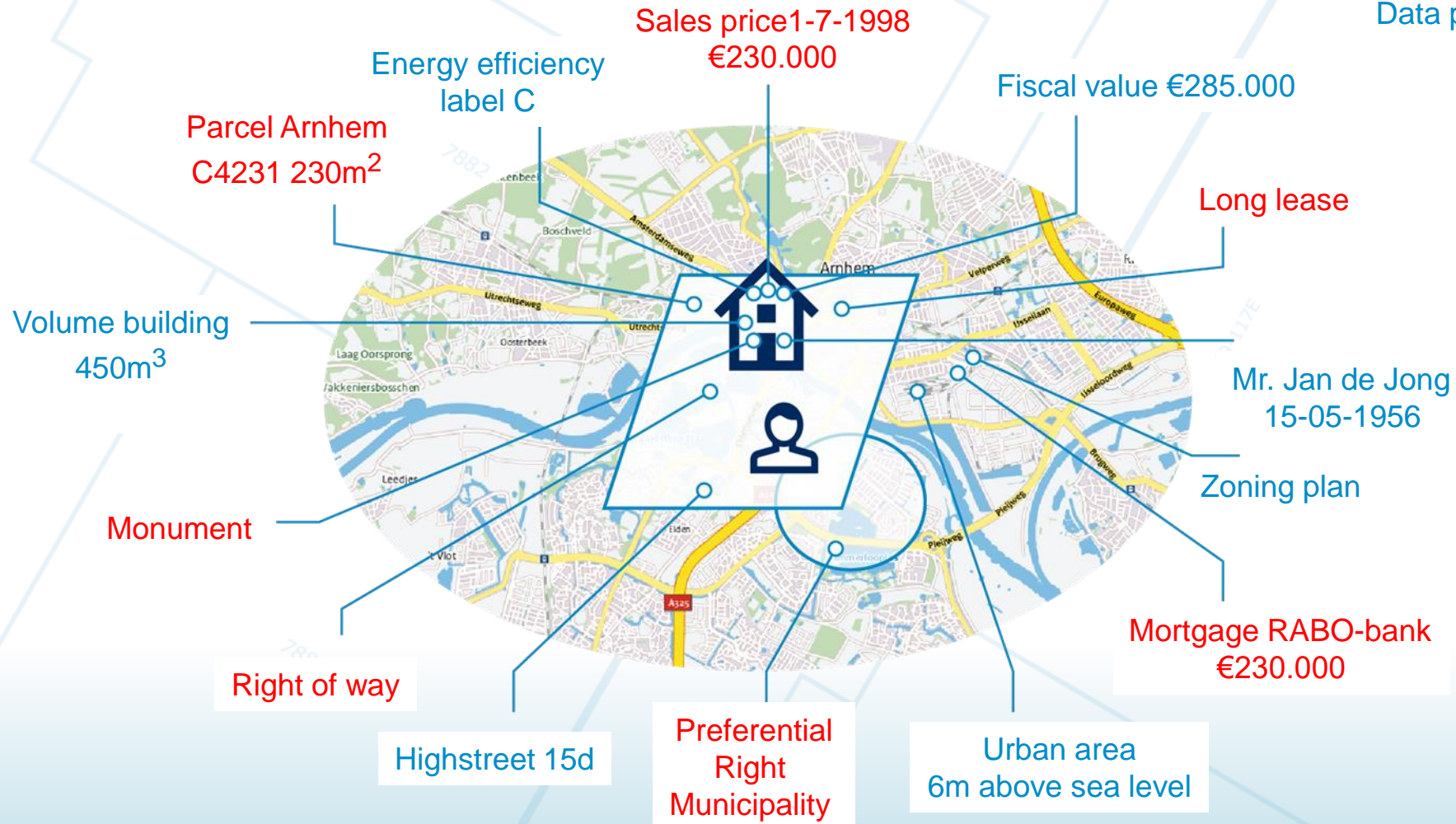




Information from public sources

Cadastral Data

Data provided through Kadaster



Pivotal role of cadastral data; role of the cadastre



Policy makers, stakeholders and users need coherent, comprehensive information in all phases of the process; cadastral data are essential element

Cadastral data are part of a **federated data ecosystem**

In complex situations insight in rights, restrictions and responsibilities is essential and sometimes the key to success in finding a solution



Data policies related to a data ecosystem





Data policy Cadastral/Land Registry-data

Findable

OK

Accessible

API's, Data at the source

cadastral parcels HVD (open); LR: open access

Interoperable

Semantics, Currency

Re-usable

Partly

Metadata

Semantic Interoperability

European Data Policies

data governance act, data act, open data directive



Concluding remarks

- Cadastral data are pivotal for solving current issues
- Cadastral are *part* of a federated data foundation
- Users need and expect a coherent and comprehensive data foundation: this requires cadastres to team up with other agencies and stakeholders