



# PCC – INVITATION TO PRAGUE AND PROPOSED TOPIC FOR THE CZECH PRESIDENCY

**Svatava Dokoupilová**

PARIS, PCC IN EU – PLENARY MEETING

1 June 2022



# BASIC DATA ABOUT THE CZECH REPUBLIC

**Area:** 78 866 km<sup>2</sup>

**Population:** 10 mil.

**Administrative division:**

*14 regions*

*77 districts*

*6258 municipalities*

*13 076 cadastral units*



# BASIC DATA ABOUT THE CZECH OFFICE FOR SURVEYING, MAPPING AND CADASTRE

- ČÚZK is central administrative body responsible for land surveying and mapping activities as well as registration of property rights and cadastral activities for the whole territory of the state
- President is appointed by Government
- Independent chapter in state budget
- Approximately 4 800 employees



# BASIC DATA ABOUT THE CADASTRE OF THE CZECH REPUBLIC

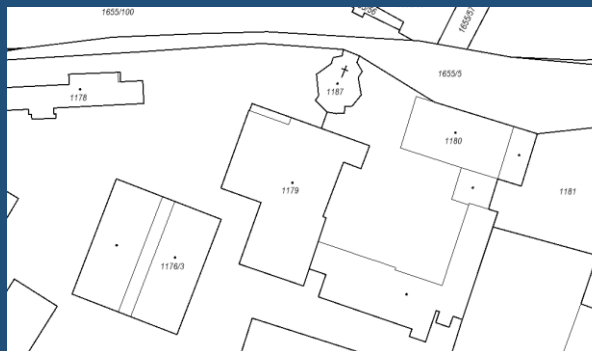
**Real estate cadastre** is administered with help of the Information system of the real estate cadastre (ISKN) - an integrated information support system for state administration of the real estate cadastre and for providing user services of the cadastre.

**Number of objects:**

*22,8 million parcels*

*4,2 million buildings*

*6,4 million ownership folios*



# PRAGUE 2009



2009

FROM

- Cadastral systems overview

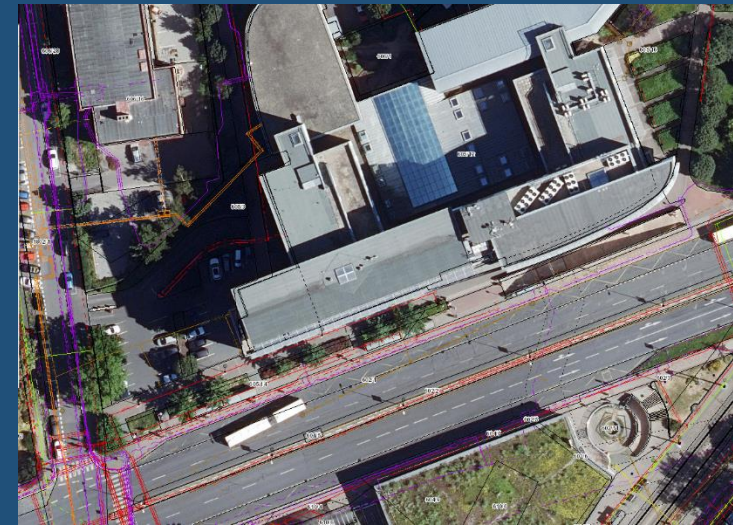


- eCadaastre
- INSPIRE implementation

2022

TO

- Important role of the cadastre in supporting the infrastructure development



# CZECH PRESIDENCY TOPIC FOR THE PCC MEETING

**„Cadastral Role in Information Support of the  
Infrastructure Development Necessary for  
Enhancement Energy Independence and  
Meeting Environmental Goals“**

# WORKPLAN PROPOSAL

## 1. Questionnaire on

Electronic identity for access to cadastral data – conflict of the information openness and security issues  
Solution in different European countries

## 2. Workshop and Plenary meeting in Prague



# NEXT PLENARY MEETING - PRAGUE November 2022

together with CLR KEN of the EuroGeographics



*AirPano*

# LOOKING FORWARD TO SEEING YOU IN PRAGUE



# CONTACT

## Svatava Dokoupilova

Czech Office for Surveying, Mapping  
and Cadastre

Pod sídlištěm 9/1800,CZ18211 Praha 8

## International relations

Phone: +420 284 041 299

E-mail: [svatava.dokoupilova@cuzk.cz](mailto:svatava.dokoupilova@cuzk.cz)

