

UN-GGIM: Europe Working Group on Data Integration

—

Webinar I - Paving the way for new markets *Challenges and recommendations*



UN-GGIM
EUROPE

UNITED NATIONS
COMMITTEE OF EXPERTS ON
GLOBAL GEOSPATIAL
INFORMATION MANAGEMENT



24 February 2022

Pier-Giorgio Zaccheddu, BKG, Germany
Markus Jobst, BEV, Austria
Nathalie Delattre, NGI, Belgium
Carol Agius, UN-GGIM: Europe Secretariat



Agenda

Introduction

Methods

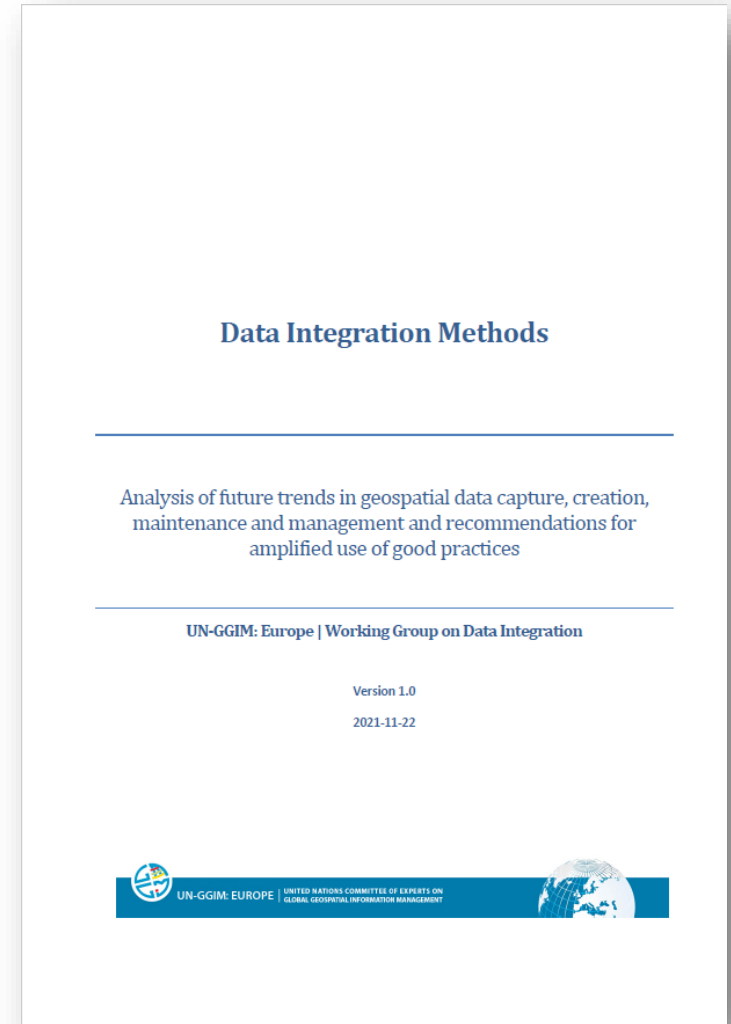
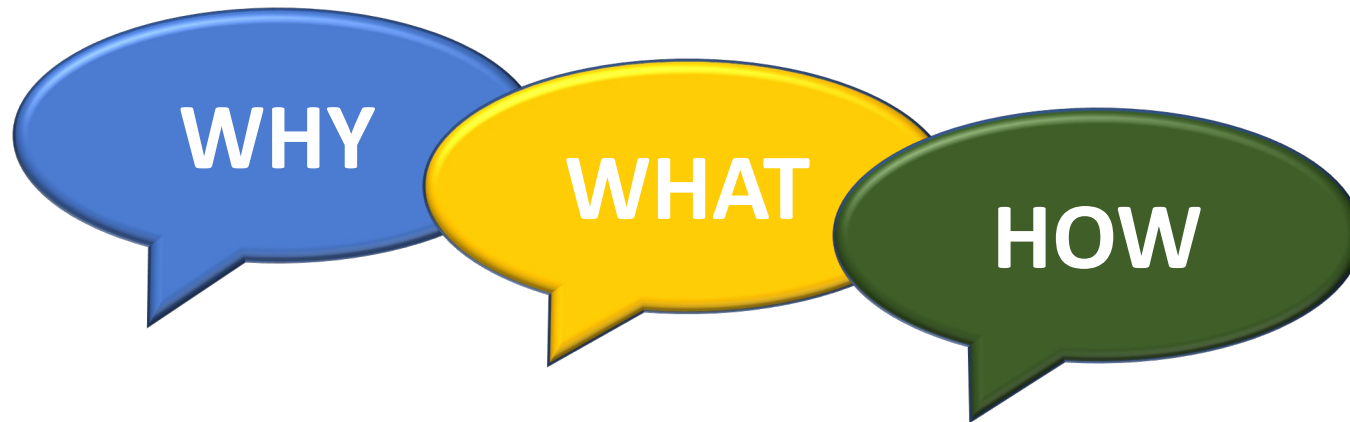
Recommendations

1. Welcome
2. Intention of the webinar
3. **Why** is data integration meaningful? A fictive perspective from a Director General
4. **What** tools and requirements enable data integration? A fictive perspective from a Data Provider
5. **How** can we enable data integration processes? A fictive perspective from a Senior Manager
6. Key messages retained from the discussion
7. Resumé



Intention of the webinar

Present and discuss the outcome of the Deliverable on Data Integration Methods in a Role play



Why did we work on this document?

Geospatial ↔ Statistics

Organizational
issues

Different
data
structures

Legal
constraints

Technical
encodings



Overcome the
bridge
between
Geospatial and
Statistics

© CC BY-SA



UN-GGIM: EUROPE

UNITED NATIONS COMMITTEE OF EXPERTS ON
GLOBAL GEOSPATIAL INFORMATION MANAGEMENT



What does that mean for my agency?



<https://www.business2community.com/content-marketing/5-key-elements-successful-content-marketing-strategy-0947654>

Do we have the requirements in mind?



UN-GGIM: EUROPE

UNITED NATIONS COMMITTEE OF EXPERTS ON
GLOBAL GEOSPATIAL INFORMATION MANAGEMENT



What can we do better in the development towards more efficient data integration methods?

- Look at the situation on data integration in Europe mainly between geospatial and statistical data?
- Analyse the relevant aspects via national examples?
- Illuminate the barriers from a technical point of view?
- Provide a global and cross-domain perspective?



Is this document a call for political action in Europe?

Am I provided with clear recommendations to improve or change my agency's processes?



Join at
slido.com
#EG-WS22-05



UN-GGIM: EUROPE

UNITED NATIONS COMMITTEE OF EXPERTS ON
GLOBAL GEOSPATIAL INFORMATION MANAGEMENT



Agenda

Introduction

Methods

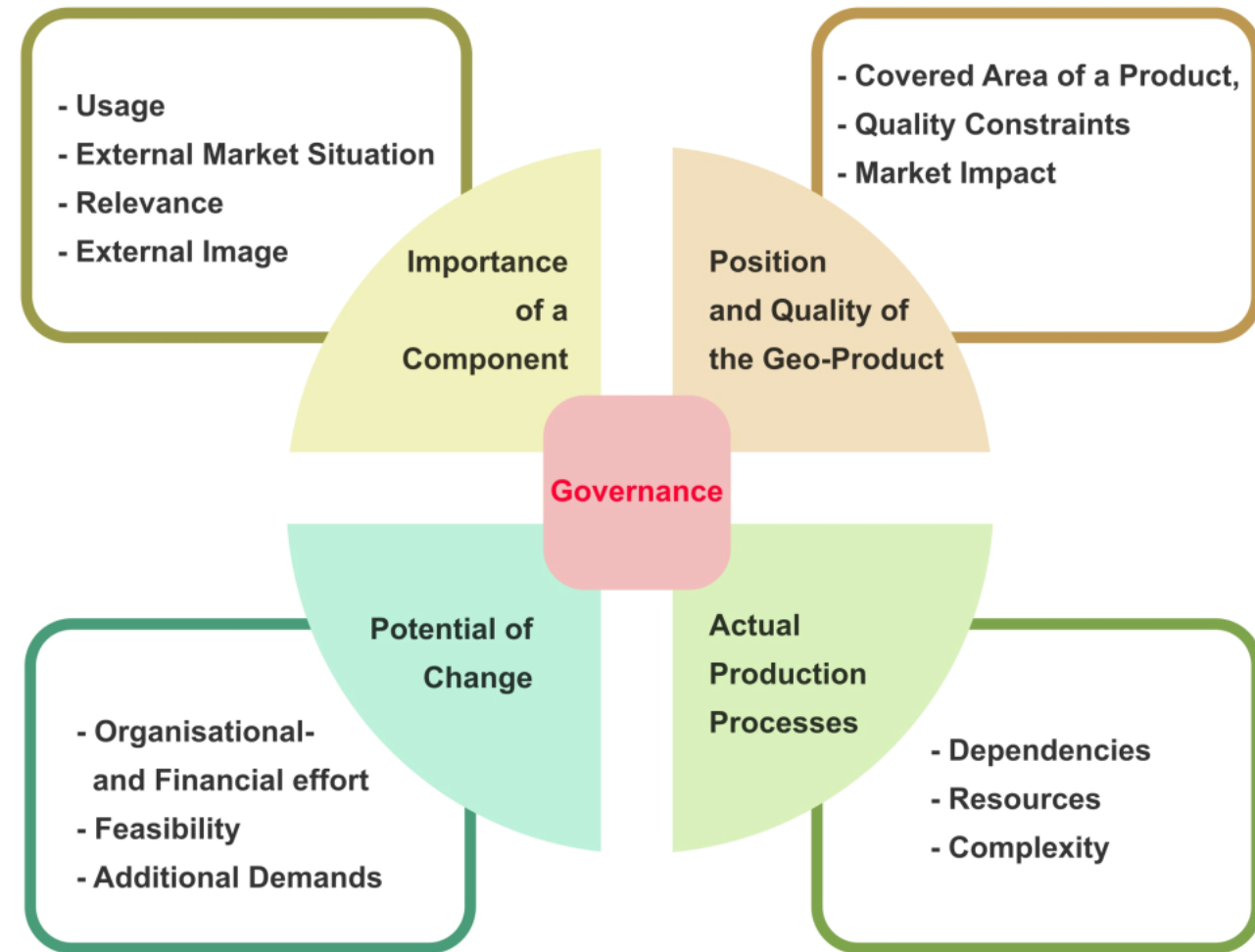
Recommendations

1. Welcome
2. Intention of the webinar
3. **Why** is data integration meaningful? A fictive perspective from a Director General
4. **What** tools and requirements enable data integration? A fictive perspective from a Data Provider
5. **How** can we enable data integration processes? A fictive perspective from a Senior Manager
6. Key messages retained from the discussion
7. Resumé



What do we need to make it (collaboration) happen?

- Established production processes
- „external“ influences and new perspectives
- Mutual stewardship (reliable x-domain data and services)
- Infrastructures/changes that transform our customers

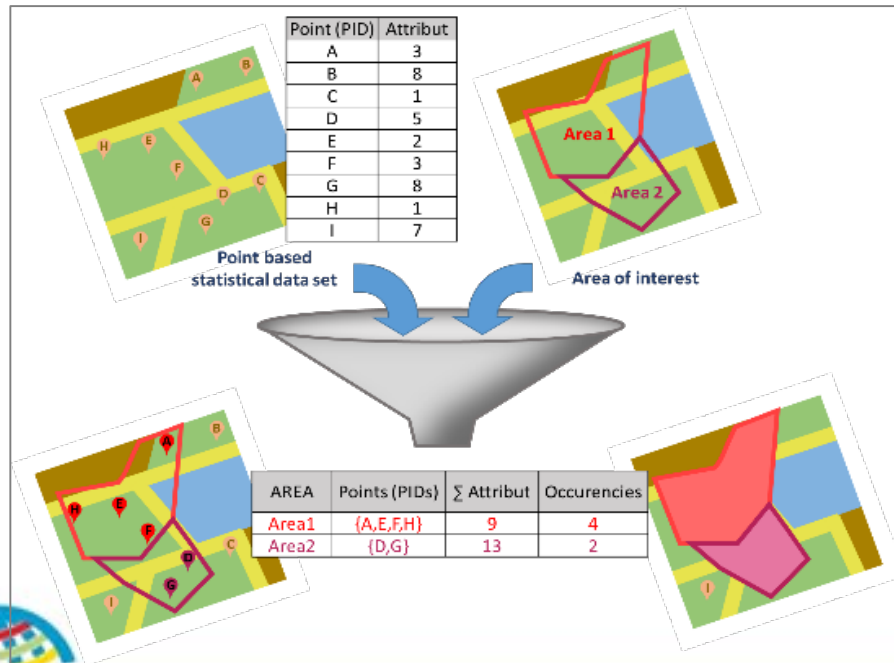


<https://link.springer.com/book/10.1007/978-3-319-72434-8>



What are future adjustments in my technological understanding?

- Pool of tools
- Pool of methods
- Need of collaboration



Infrastructure

Analytics

Applications

Cross-Infrastructure/Analytics

Data Sources & APIs

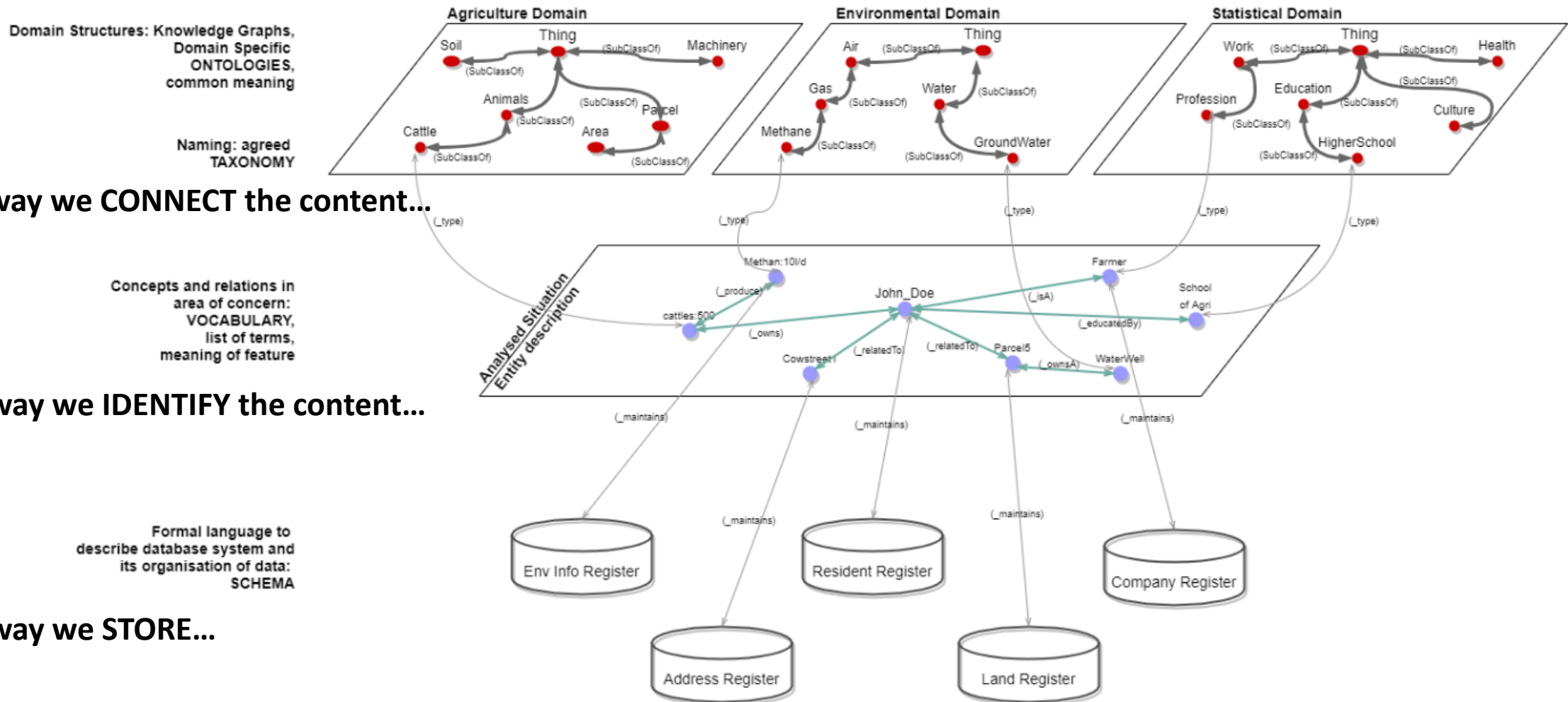
Open Source

© Matt Turck (@mattturck), Jim Hao (@jimhao), & FirstMark Capital (@firstmarkcap)

<https://www.datasciencecentral.com/data-integration-tools-market-study-1/>



How can we establish mutual understanding in a formalized way?



What is the key information that is always used in data integration? ..and the relevance of time?

sr	Serbian	Кластернојбург
be	Belarusian	Кластэрнойбург
ka	Georgian	კლასტერნობურგი
zh	Chinese	克洛斯特新堡

The language code is referring to the ISO-639-2 and ISO-639-3 codes

- *en* (english)
- *fr* (french)
- ...

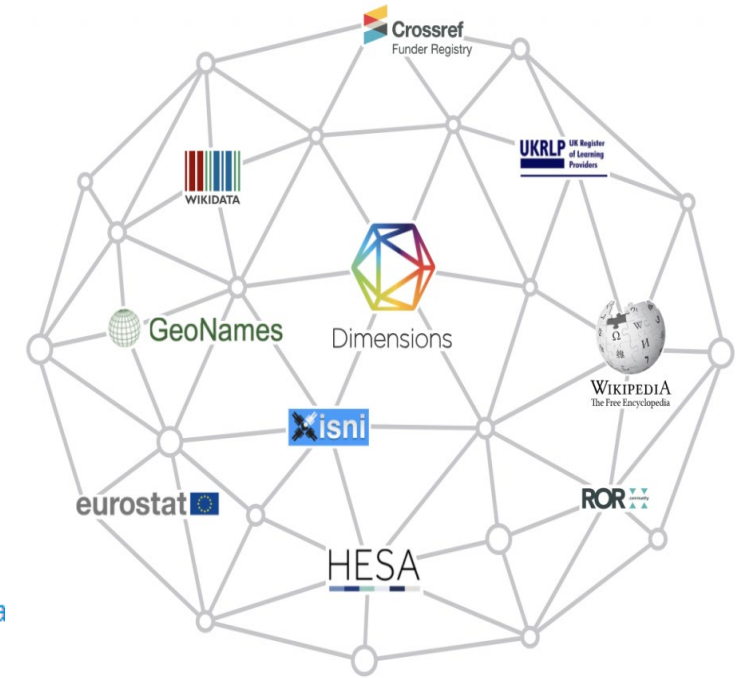
Accepted pseudo language codes :

- *post* (postal codes)
- *icao, iata, faac, tcid* (airport codes)
- *abbr* (abbreviation)
- *link* (link to website)
- *phon* (phonetics)
- *piny* (pinyin)
- *wkdt* (wikidataid)
- *unic* (UNLOCODE)

- Persistent: historicized ID
- MD, datasets and features
- Existing key data spaces and their persistent identifiers (e.g. geonames.org)

Feature Hierarchy History Tags Alternate na

#	time	user	comment
9	2019-09-05 14:55:32.165	geonames	update name :update name :be Горад Кластэрнойбург>Кластэрнойбург
8	2018-09-23 23:20:07.171	etsy	update name : Klosterneuburg (p)
7	2018-07-28 13:15:21.012	statistik austria	pop 24'843 > 15'614 (37% diff)
6	2017-06-16 20:55:50.805	statistik austria	adm2:324>321 adm3:32408>32144
5	2011-07-31 16:40:03.517	geonames	adm2:null>324 adm3:null>32408 featureCode:PPL>PPLA3



Agenda

Introduction

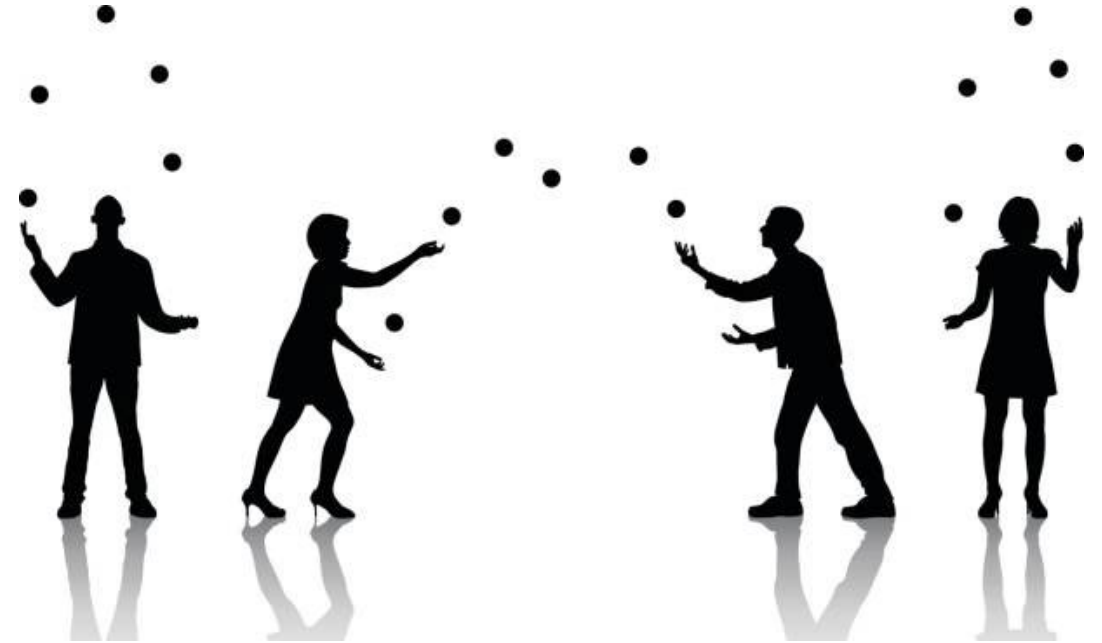
Methods

Recommendations

1. Welcome
2. Intention of the webinar
3. **Why** is data integration meaningful? A fictive perspective from a Director General
4. **What** tools and requirements enable data integration? A fictive perspective from a Data Provider
5. **How** can we enable data integration processes? A fictive perspective from a Senior Manager
6. Key messages retained from the discussion
7. Resumé



How to setup the suitable technical rules and specifications in matter of data integration process?

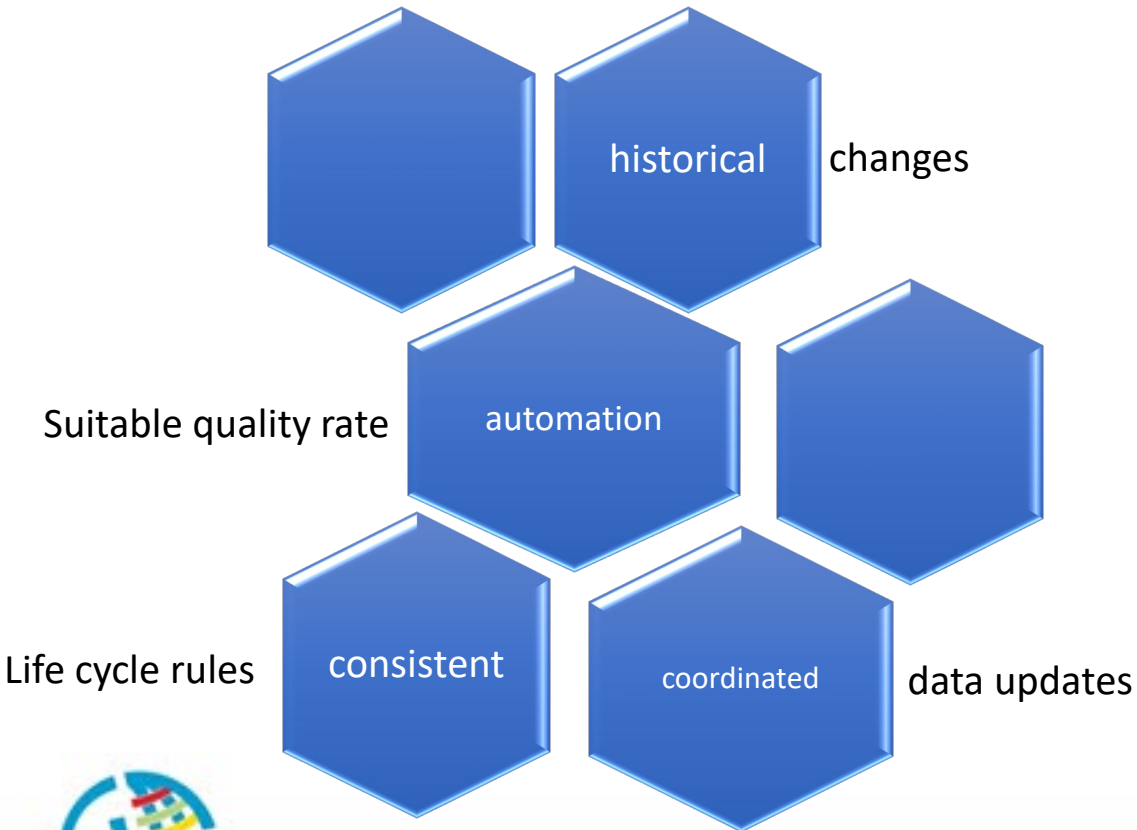


How to automatize the process?

Fill the conditions

&

Let's what the machine is able to do!
Based on existing standards



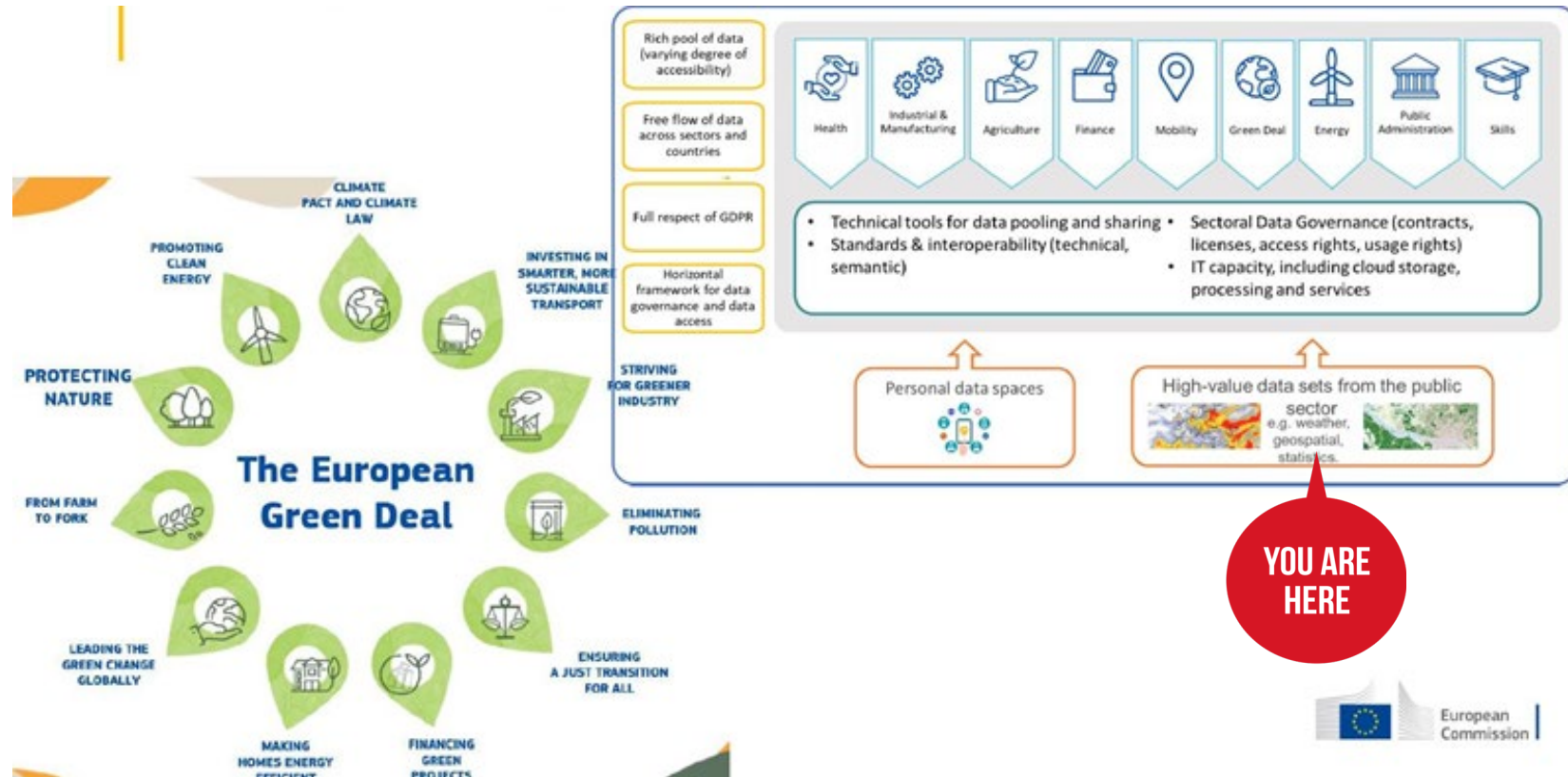
How to cooperate?

- integration process let to ...
- coordination to improve the maintenance of..
- at the level of ...
- kind of agreement



How to integrate new (European) Data Spaces?

- modernizing the SDIs towards GKIs
- investing in matter of capacity and resources
- our datasets are linkable



Agenda

Introduction

Methods

Recommendations

1. Welcome
2. Intention of the webinar
3. **Why** is data integration meaningful? A fictive perspective from a Director General
4. **What** tools and requirements enable data integration? A fictive perspective from a Data Provider
5. **How** can we enable data integration processes? A fictive perspective from a Senior Manager
6. **Key messages retained from the discussion**
7. **Resumé**

