



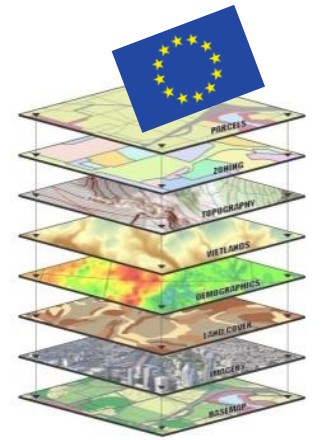
Creation of pan-European geospatial datasets Experiences in real life

**Joint EuroSDR & EuroGeographics Workshop
on Geodata Discoverability**

Eurostat – E.4 – GISCO – H.I. Reuter



GISCO – The Geographical Information System of the Commission



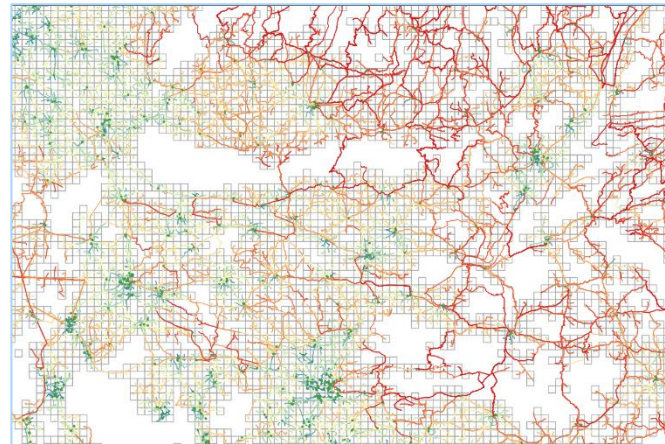
- Permanent service of the European Commission (Eurostat)
- Role: Answers needs of European Commission, Eurostat and the ESS for geographical information at EU/national/regional levels.
 - Provision of GIS (reference) data, services and software,
 - Support cartographic and spatial analysis activities,
 - Coordinates commission-wide GI activities,
 - Stimulate the use of GIS to support commission activities,
 - Support activities on the integration of statistical and geospatial information.

GISCO - the Geographic Information System of the Commission

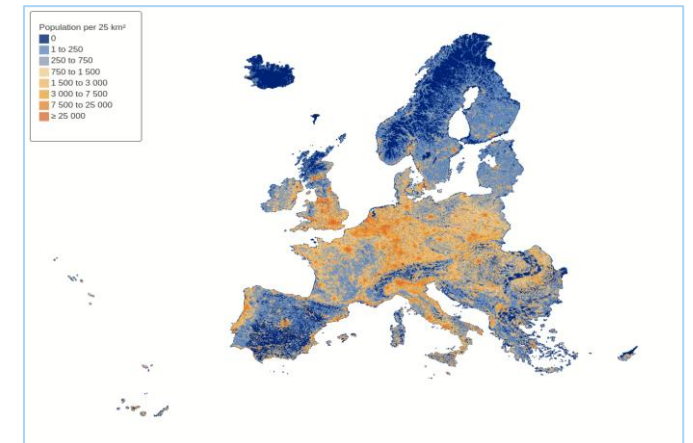
localise



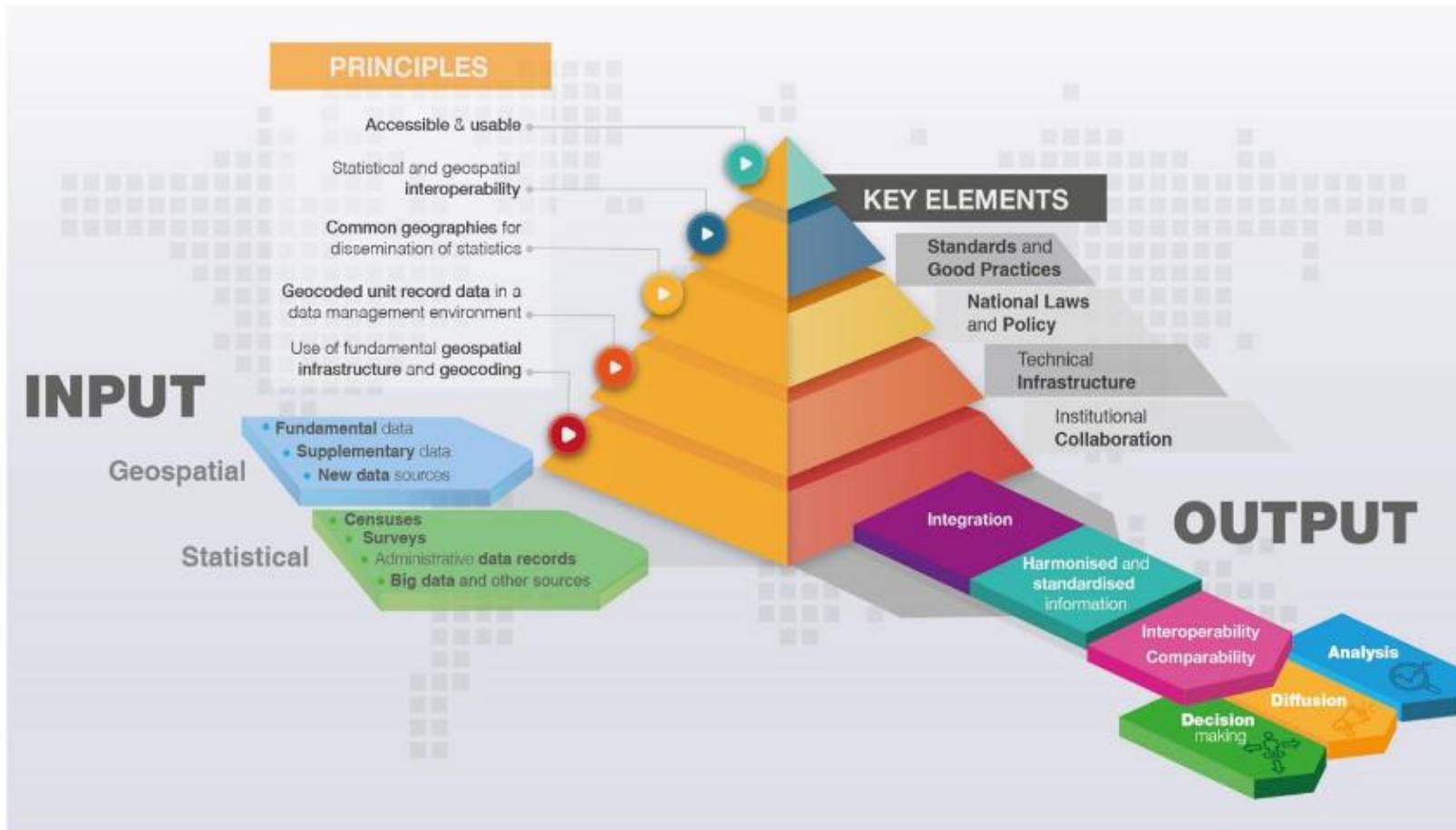
analyse



visualise



Global Statistical Geospatial Framework



Eurostats Workprogramm 2022

To bring Europe closer to citizens and regions, Eurostat will continue to make use of georeferenced data by systematically integrating and mainstreaming geospatial information into statistical production and **collecting more geospatial data, with a special focus on the core geospatial datasets** ⁽³⁾. This will allow for more detailed regional and local level statistics in areas such as demography, economy, environment, energy, transport and agriculture.

Management plan 2022

EURO

⁽³⁾ These are as defined by the Commission inter-service group on Geographic Information (COGI): administrative units, statistical units, buildings, cadastral parcels, addresses, transport networks, land parcel information system, postal codes, utility and governmental services.

Establishing pan European Datasets Workflow

Analysis / Dissemination

Computer Systems

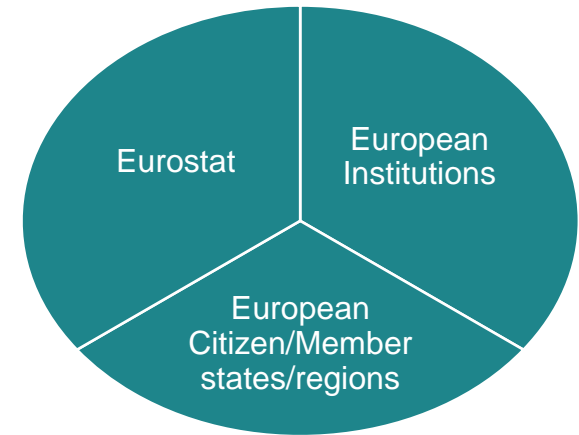
INSPIRE Geoportal 

data.europa.eu

[Kohesio: discover EU projects](#)



Analysis in Incoming WIKI
Import into Database
QAQC Cycles,
Integration, Generalisation,
Topological Checks,
Feedback with MS



GISCO ReferenceDB

[Website](#) [Tercet](#)

Services: [Download](#),
[AddressAPI](#), [ID](#), [VectorT](#),
[OGC-API](#)



Human Intelligence

Local Contacts Reports



NSI/NMCAs

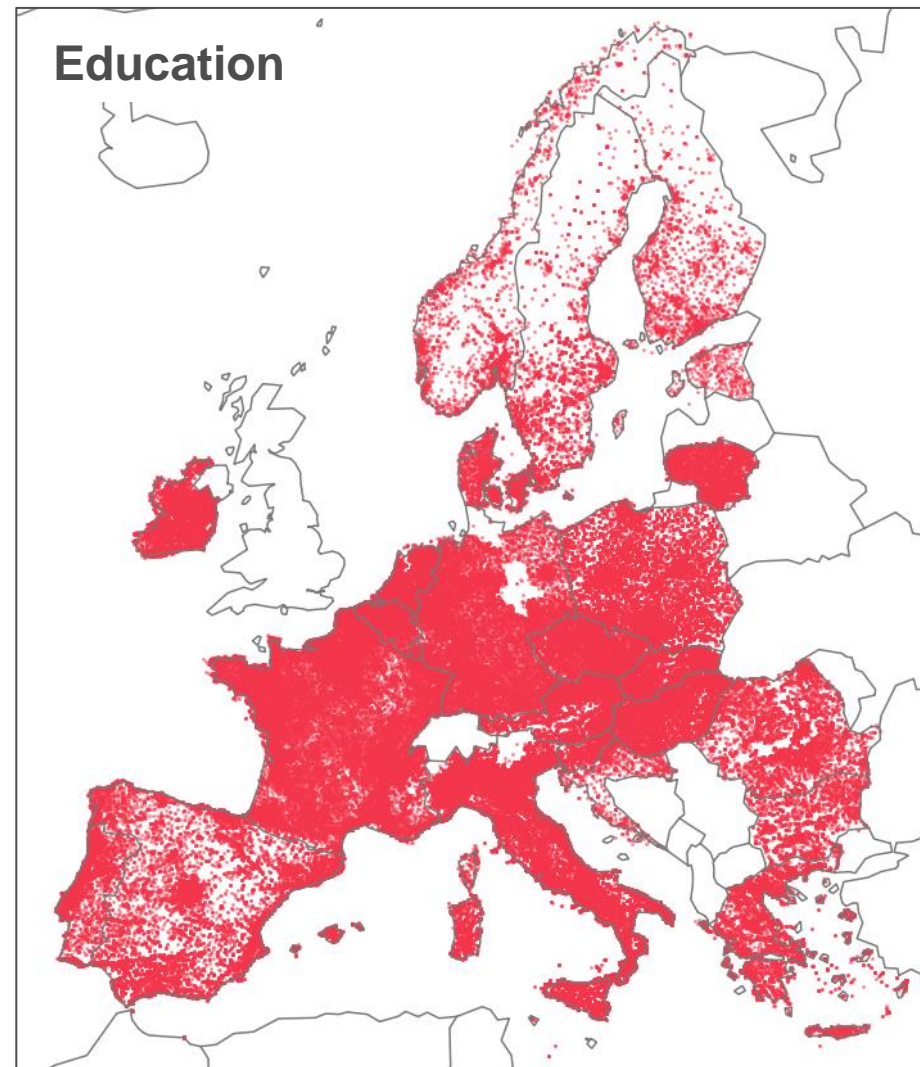
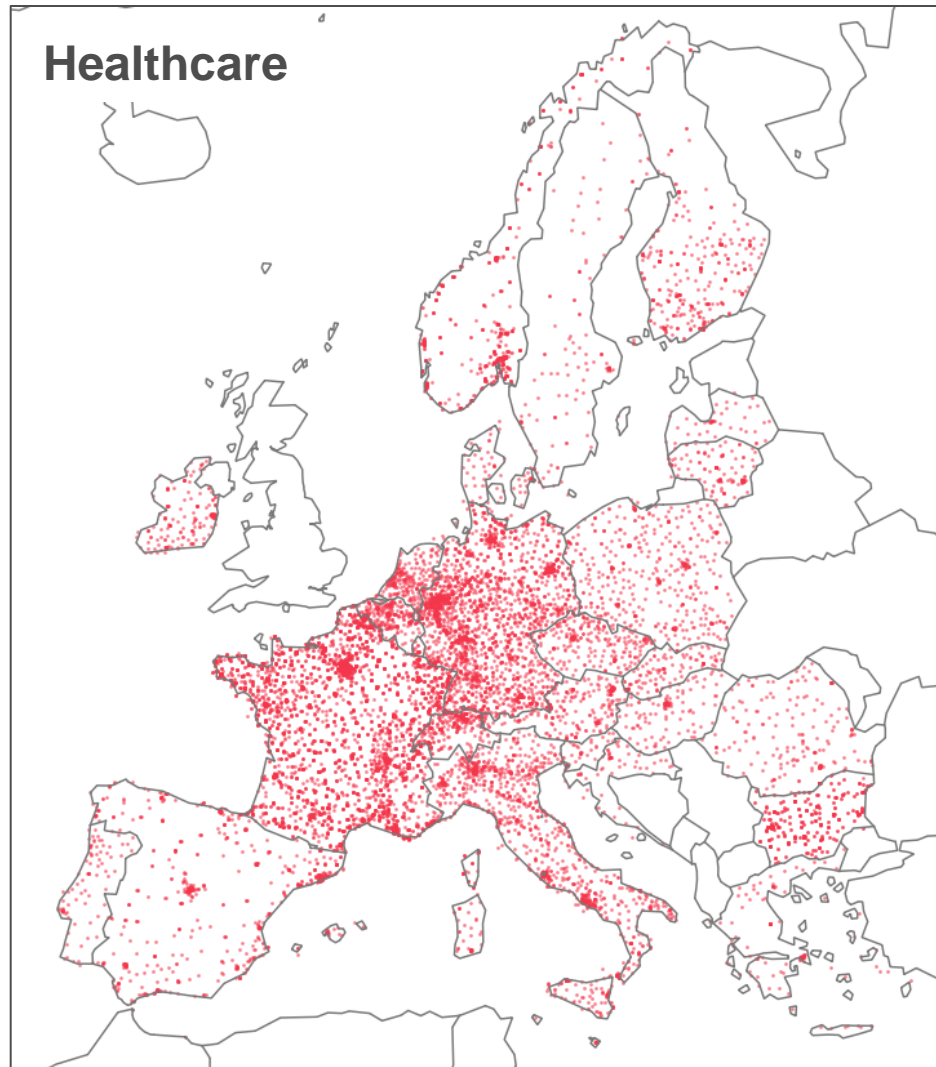
Social media Research projects



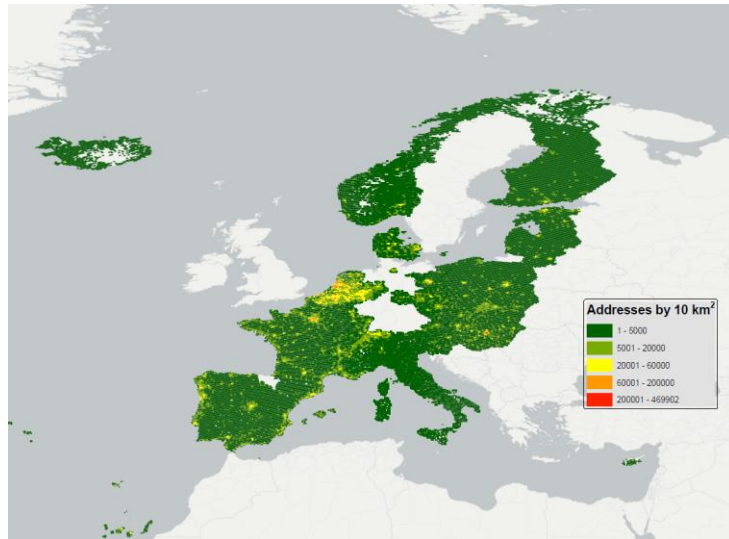
Majority of work



Data & systems: Utility services, examples



Data & systems: GIS reference data – AD-BU-CP-AU–TN



Addresses

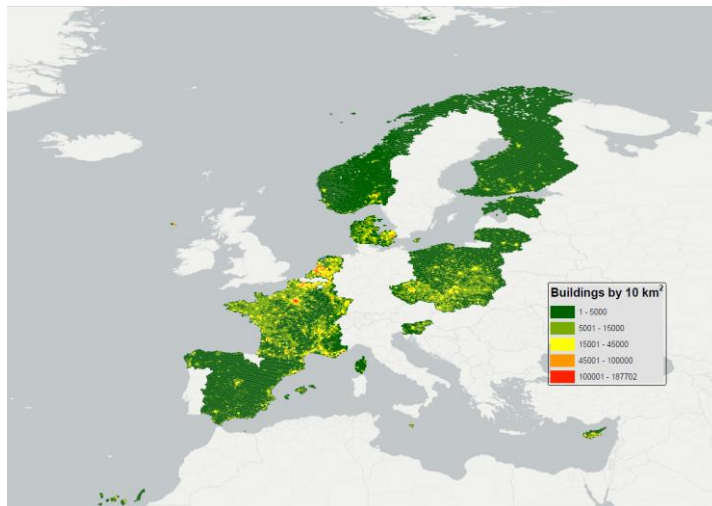
tackles the issue of non-validated data Address data entry (1 – 10 - 100 rule)

<https://gis-services.ec.europa.eu/addressapi/>

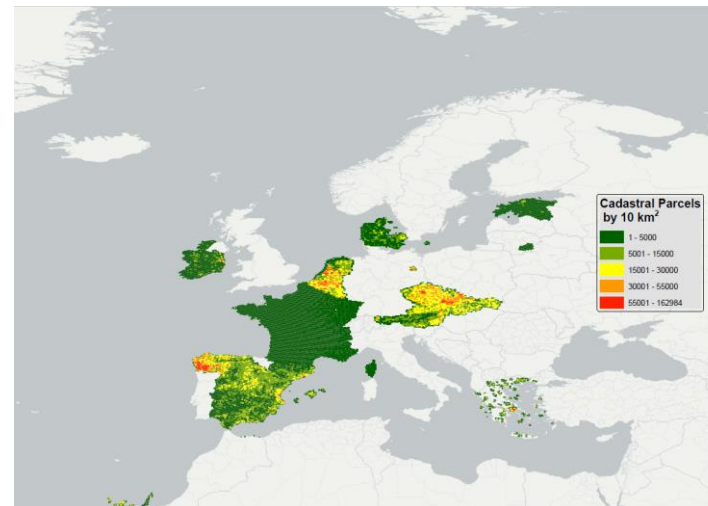
Transport Networks



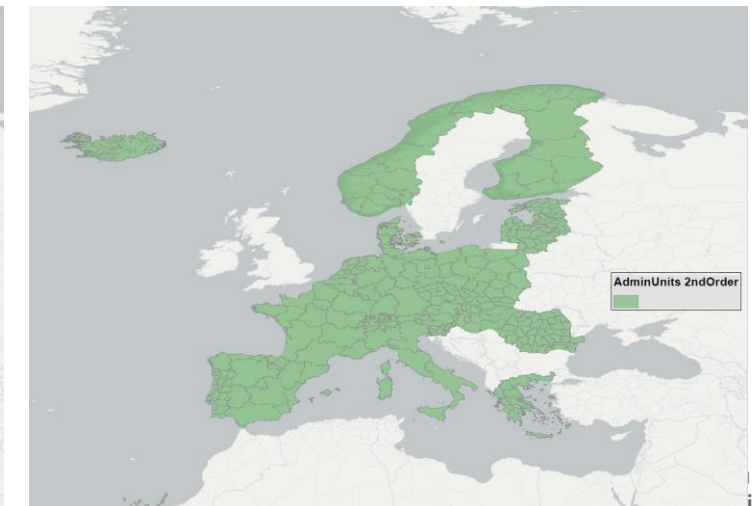
If your areas is gray and you want to contribute estat-gisco@ec.europa.eu



Building Units



Cadastral Parcels



Administrative Units

Observations

Data exists but are not documented in Metadata systems (neither European or MS ones) or directly *hidden*.

Several datasets with various specifications exists for the same theme maintained by different organisations? Who is the master?

Dispersed datasets per country without a central authority

Depending on organisations - Administrative hurdles / Lock down mentality – not user centric

Officially data do not exist, but commercial datasets exist for the same area.

Outdated (temporally) and semantically reduced data (e.g. content)

- Requirement: Data are documented in INSPIRE/ EuropeanDataPortal/National Portals
- Requirement: Coordination inside the MS
- Requirement: Central Access/Distribution Point
- Requirement: Data Access for EC
- Requirement: Public Administration data **MUST** exist and be accessible
- Requirement: update data at least once a year, full attributes

Conclusions

- Eurostat works on a range of topics for pan-European data sets
- Depending on the datasets a) European Databases are created or b) datahub pointing back to MS resources to provide services internally/externally
- Annual updates envisaged – In general good feedback iterations with data providers as they see their data used and can improve..... takes time + resources (e.g. funding available via REGIO/CONNECT/ESTAT)
- Progress is hampered by e.g. a) documented and available datasets, b) stability of services, c) performance of services or d) at point of use restrictions due to financial demands.
- Code of conduct for Geospatial Data is required

Thank you



© European Union 2022

Unless otherwise noted the reuse of this presentation is authorised under the [CC BY 4.0](https://creativecommons.org/licenses/by/4.0/) license. For any use or reproduction of elements that are not owned by the EU, permission may need to be sought directly from the respective right holders.

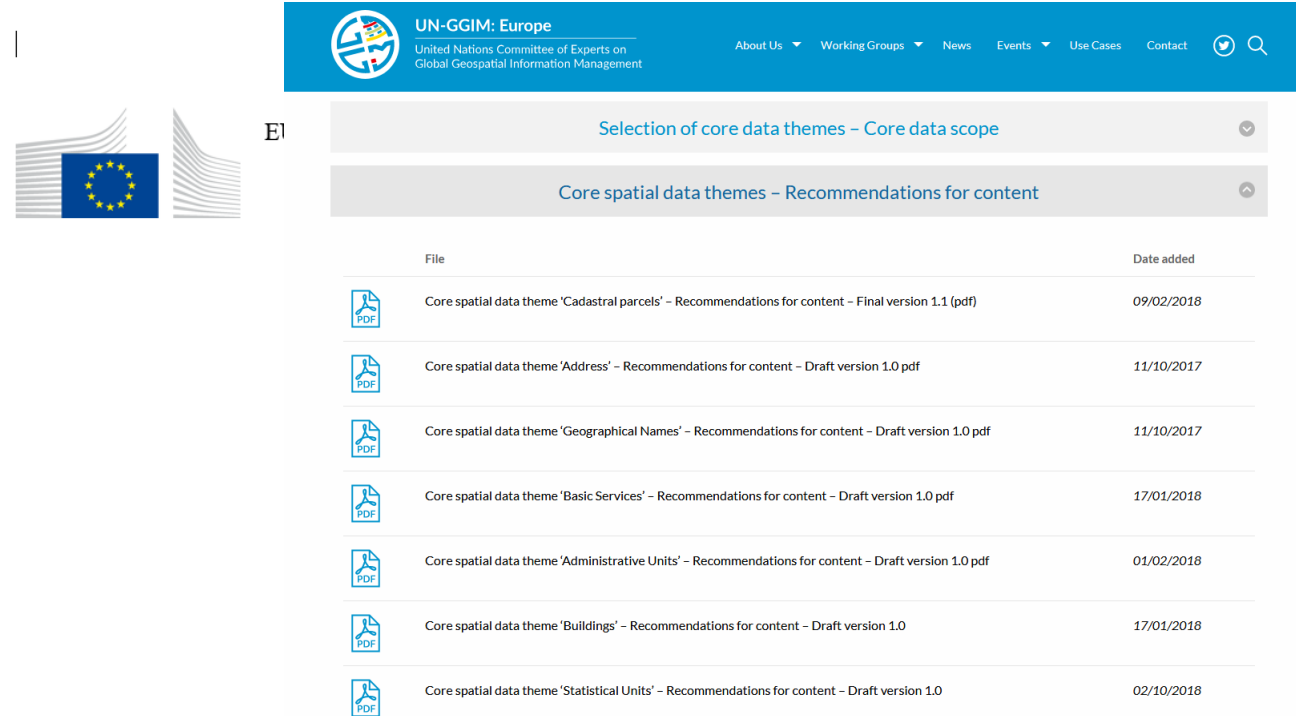


EC Geospatial Data Requirements








Internal EC Consensus document outlining the EC needs for geospatial data

(Document for information and not approval)

...to provide a consolidated and consistent overview of the European Commission user needs and set out cross-cutting and domain specific requirements of the European Commission for EU wide geospatial information and data products from Member States in support to Sustainable Development and other EU policies....



The screenshot shows the UN-GGIM: Europe website interface. The header includes the logo and text: "UN-GGIM: Europe United Nations Committee of Experts on Global Geospatial Information Management". Navigation links include "About Us", "Working Groups", "News", "Events", "Use Cases", and "Contact". The main content area is titled "Selection of core data themes - Core data scope" and "Core spatial data themes - Recommendations for content". Below this is a table listing various PDF documents.

File	Date added
 Core spatial data theme 'Cadastral parcels' - Recommendations for content - Final version 1.1 (pdf)	09/02/2018
 Core spatial data theme 'Address' - Recommendations for content - Draft version 1.0 pdf	11/10/2017
 Core spatial data theme 'Geographical Names' - Recommendations for content - Draft version 1.0 pdf	11/10/2017
 Core spatial data theme 'Basic Services' - Recommendations for content - Draft version 1.0 pdf	17/01/2018
 Core spatial data theme 'Administrative Units' - Recommendations for content - Draft version 1.0 pdf	01/02/2018
 Core spatial data theme 'Buildings' - Recommendations for content - Draft version 1.0	17/01/2018
 Core spatial data theme 'Statistical Units' - Recommendations for content - Draft version 1.0	02/10/2018

Priority Geospatial Datasets for the European Commission

General Requirements for data themes

- Unique and persistent identifier
- full geographic extent of the territory
- at the scale ~1: 5000-10.000
- update frequency (incremental) should be once a year or better
- INSPIRE mechanism of life-cycle attributes and versioning.

IN, AG, QA, DI