



INFRASTRUCTURE FOR TRANSPORTATION AND ENERGY, THE ROLE OF THE CADASTRE IN THE PROCESSES

PRAGUE, NOVEMBER 2022

PRESENTED BY GUNNAR ERSBO AND MAGDALENA ANDERSSON
SWEDISH MAPPING, CADASTRAL AND LAND REGISTRATION AUTHORITY

IMPORTANCE OF GEODATA

- In society and for the use of land and water, for a sustainable world – for everyone.
- A central component for digital transformation and a sustainable society. For infrastructure such as transportation and energy security.
- Secure, fast and available; location and ownership



NATIONAL STRATEGY FOR GEODATA

- The strategy is developed by Lantmäteriet in cooperation with authorities and organizations in the Geodata council.
- Members of the council are appointed by the Government.
- A focus for the strategy is its contribution to the Swedish implementation of Agenda 2030.

Participating authorities

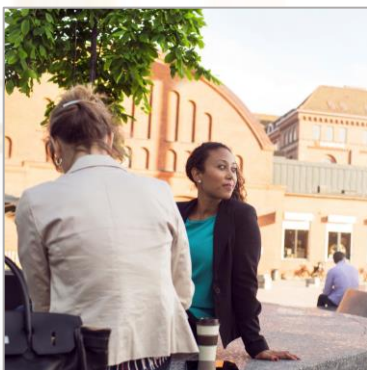


GEODATA FOR A SUSTAINABLE SOCIETY

- Geodata is part of our everyday life, e.g. map services, apps, decision support systems.
- Digital geodata is a necessary cornerstone.
- The need for information about our surroundings and our physical environment runs like a common thread through almost all of our challenges
- These include the supply of water and energy, transport and road systems, safety and risk prevention, climate adaptation and the development of land, city, coast and sea.



CHALLENGES FOR SOCIETY



Sustainable city
development

Smart rural areas



Climate adaptation

A secure and
robust society



PLANNING FOR RAILROADS - CADASTRE

Railroad to Gävle Harbor – Electrifying, changes in layout



Fastighet

Beteckning	Senaste ändringen i allmänna delen	Senaste ändringen i inskrivningsdelen	Aktualitetsdatum i inskrivningsdelen
Gävle Näringen 4:1	2021-02-16	2019-09-23 13:36	2022-11-14
Gävleborgs län, X, 21			
Nyckel: 210014919			
Anmärkning: Järnvägsmark			

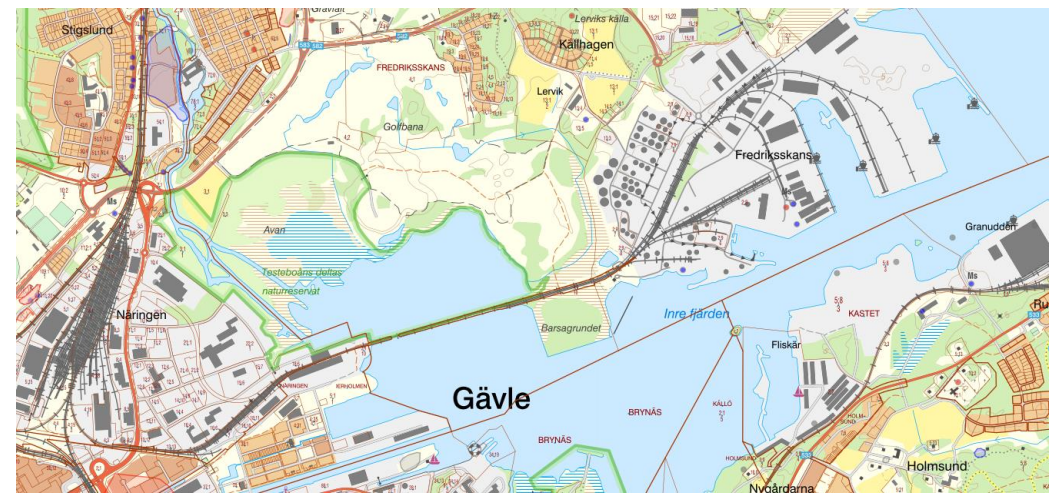
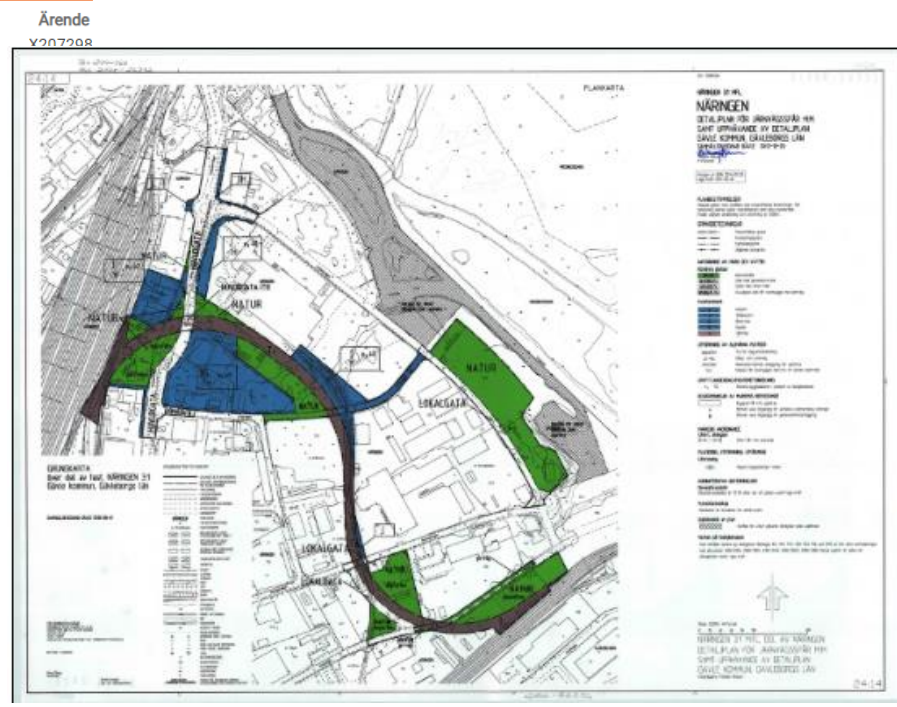
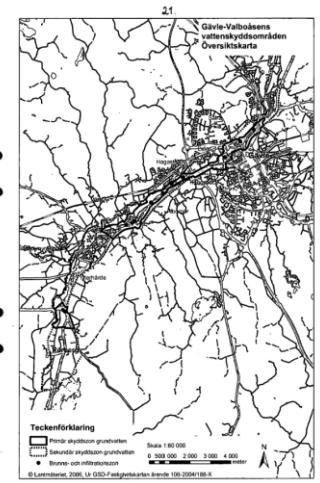
Pågående förrättningsärenden

Status
Lantmäteriförrättning pågår

Fastställelse av järnvägsplan för Fredriksskansbanan i Gävle kommun, Gävleborgs län

BESLUT

Trafikverket beslutar med stöd av 2 kap. 8 § lagen (1995:1649) om byggande av järnväg i dess lydelse före den 1 januari 2013 att fastställa järnvägsplanen för byggande av nytt spår och elektrifiering av befintligt spår på Fredriksskansbanan till Gävle Hamn.



Ärende
Y207208

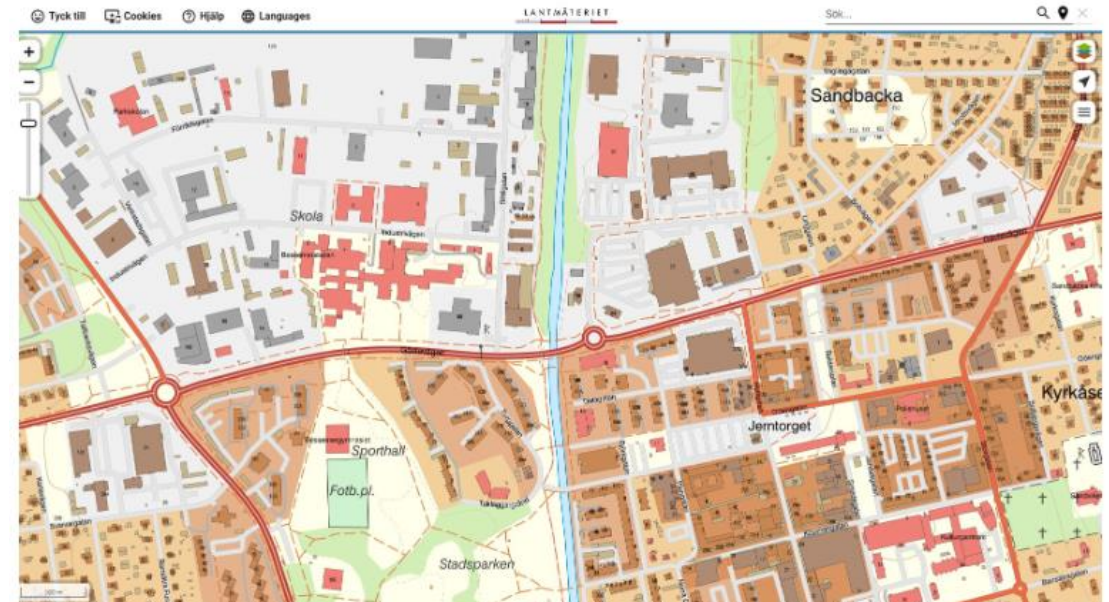
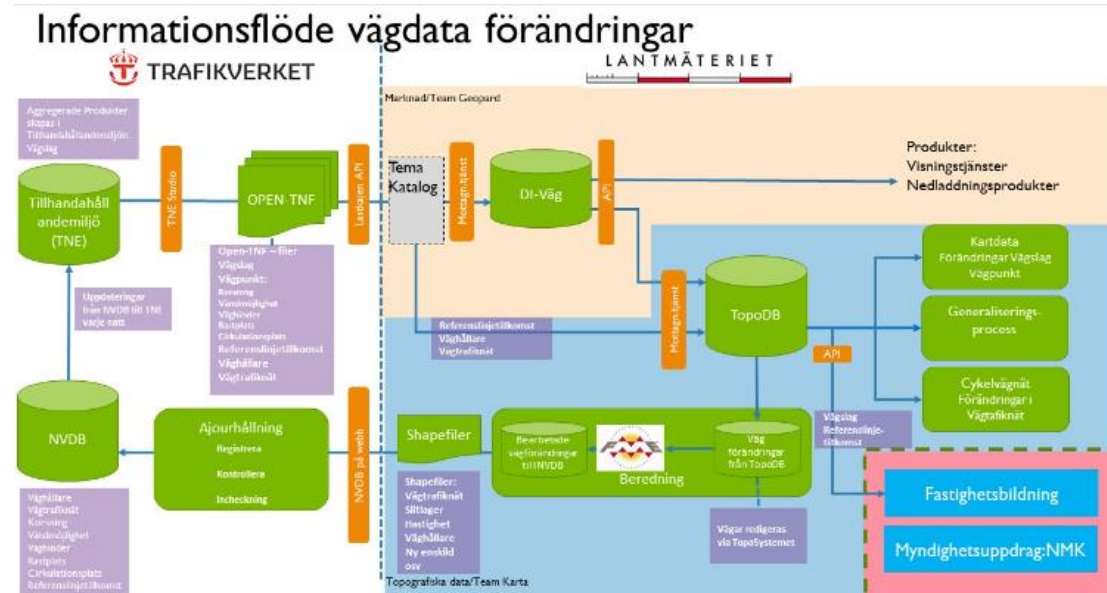
THE NATIONAL ROAD DATA BASE – TOPOGRAPHIC DATA – DIGITAL CADASTRE INDEX MAP

A step in retrieving data directly from the source; the Swedish Transport Administration (roads and railroads)

Working towards further automation of processes

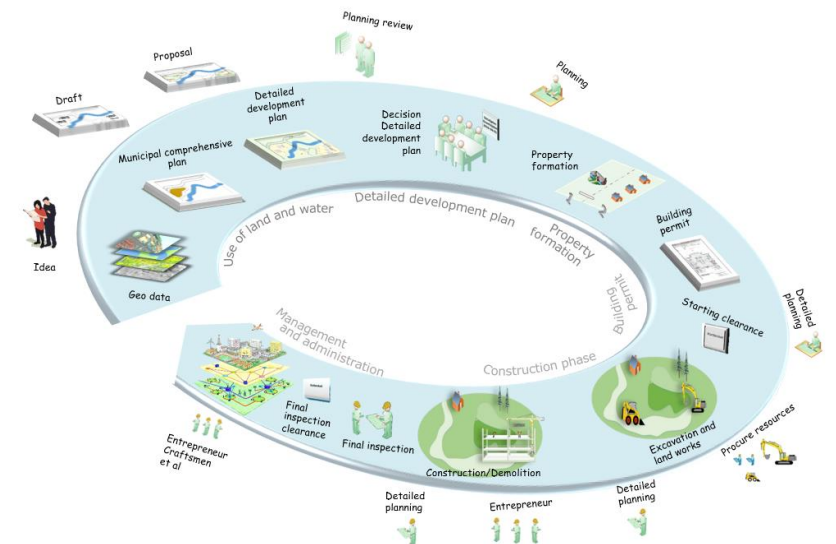
Topographic data – Digital Cadastre Index Map

Importance of co-operation, efficient processes, quality of data



CONTINUED WORK

- Gradual transition to automatic generalized products 1:50,000 and upwards
- Direct updating National Road Database (private roads) 2022/2023
- Automatic delivery of biking roads from the National Road Database?
- Smarter planning and building process
-



A COMPARISON - BASIC GEOGRAPHICAL DATA – ROAD DATABASE

Information from outside the municipalities' delivery area is sent to the line of national road database production.

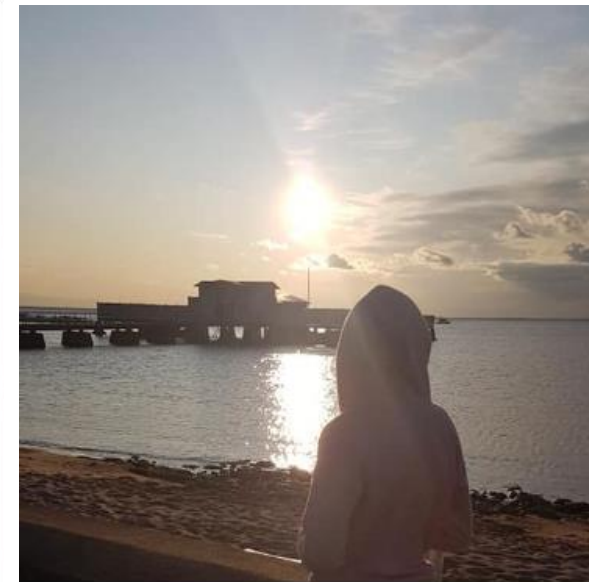
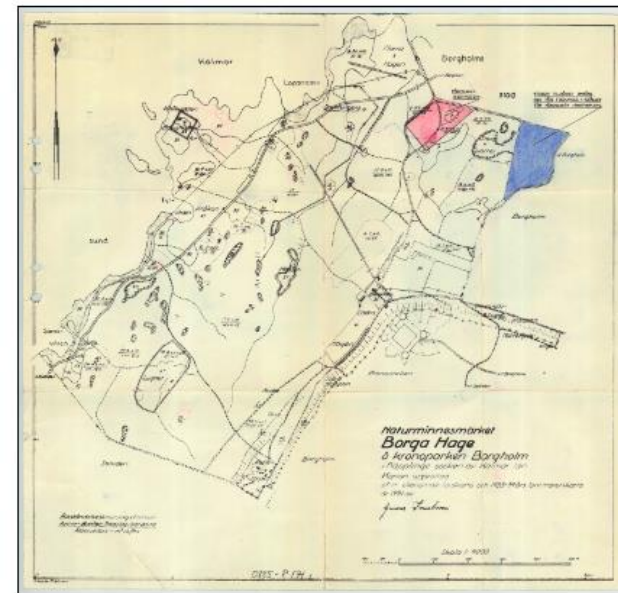
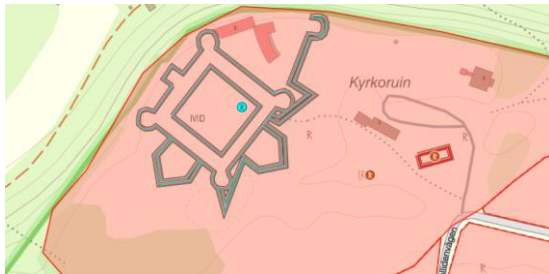
Within the responsibilities of municipalities

- New roads in residential areas
- Neighborhood roads
- Roads in industrial areas
- Driveways
- Forest roads
- Completed roads



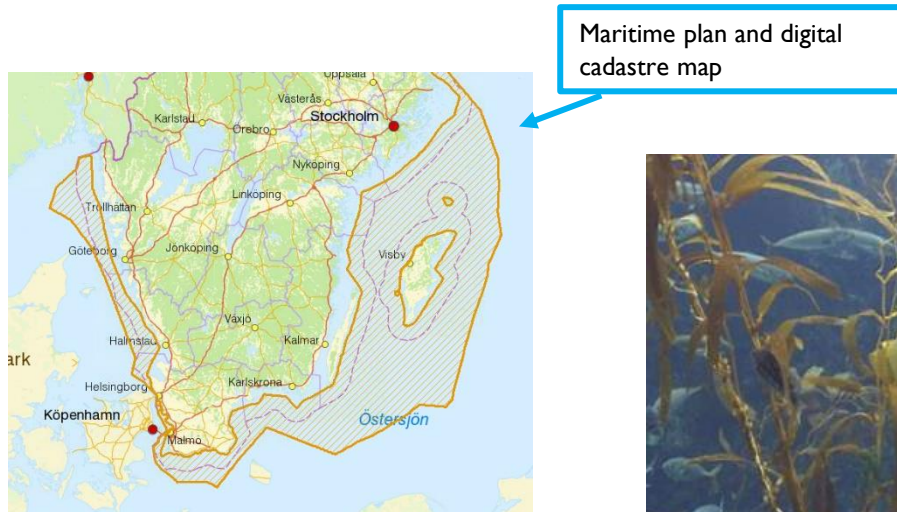
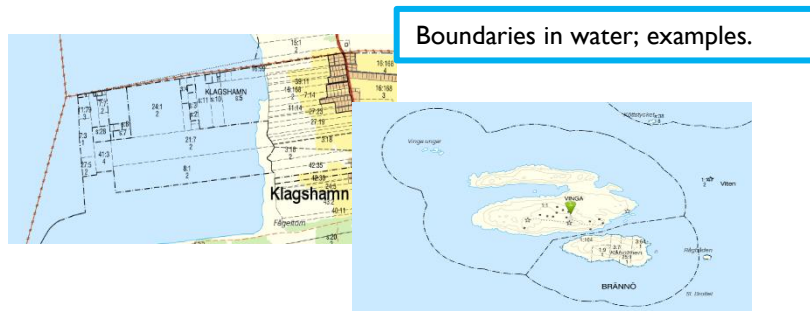
SUSTAINABLE LAND, MARINE AND WATER MANAGEMENT

- Importance of good knowledge and planning base
- Importance of comprehensive planning processes which encompasses land, coastal area and the sea. Overlapping planning instruments.
- Visualization of boundaries between different zones, e.g. private and public water
- Disposition rights
- Cadastre and Marine Cadastre



ENERGY

- Wind turbines in public water area and in economic zone



Lillgrundens vindkraftpark i Öresund. Foto: Ingvar Lagenfelt.

THANK YOU FOR LISTENING!

For questions and information, feel free to contact:

Magdalena Andersson, magdalen.andersson@lm.se

Gunnar Ersbo, gunnar.ersbo@lm.se

Marika Ström, marika.strom@lm.se

Anna-Lena Fridolfsson, anna.lena.fridolfsson@lm.se

