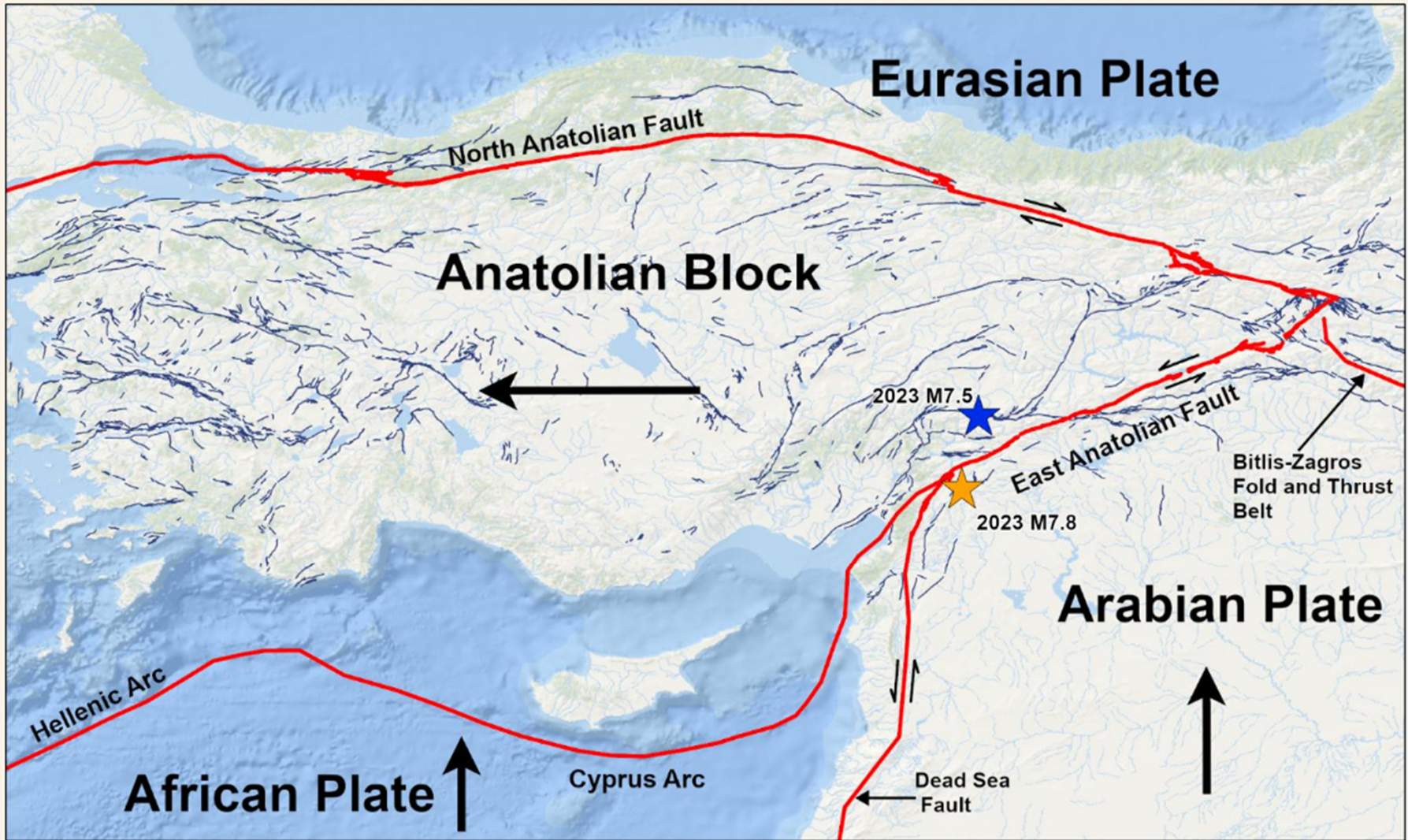


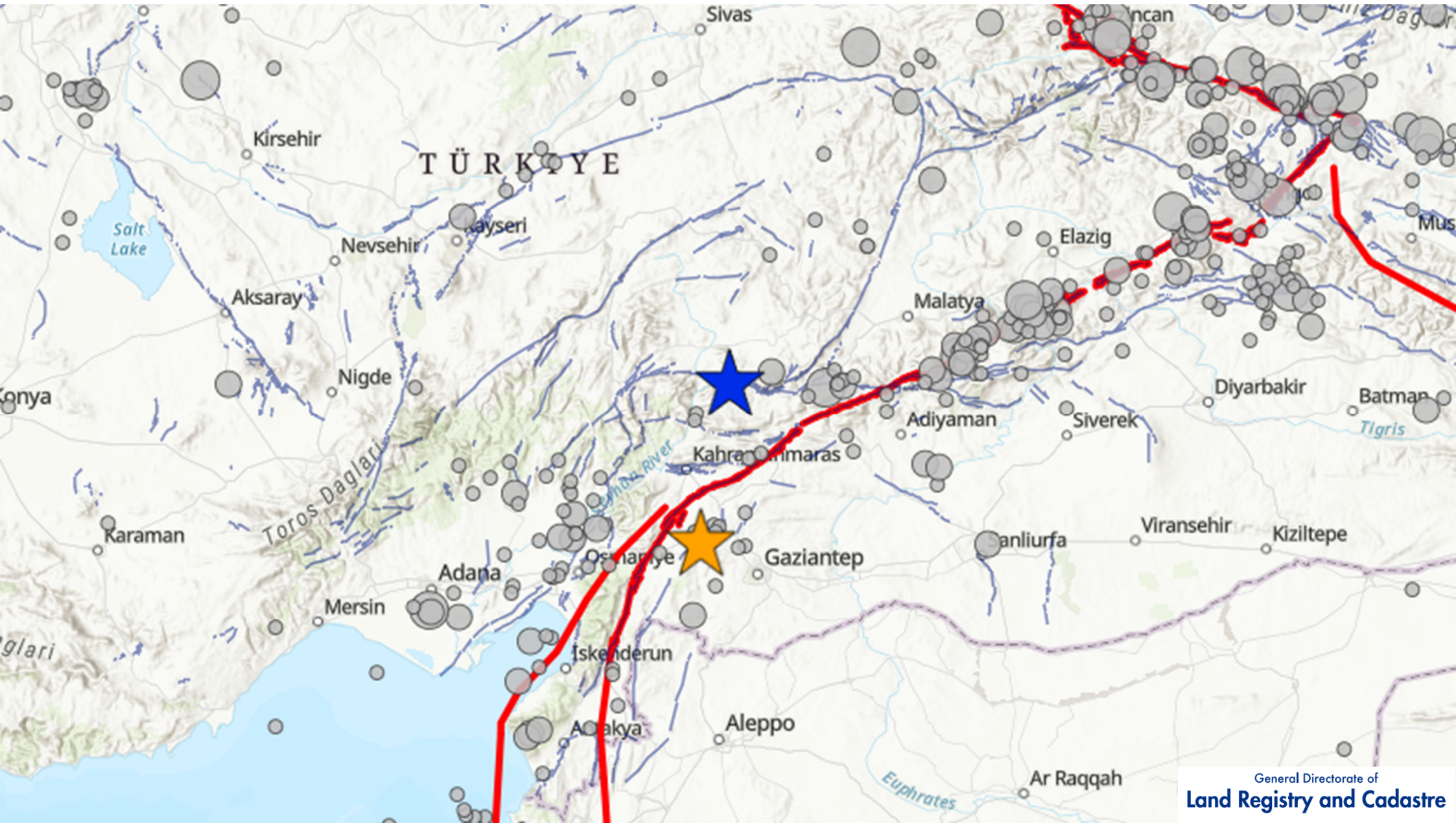


**Disaster Management and Cadastre in Türkiye,
Experiences from
Kahramanmaras Earthquakes, February 6th 2023**

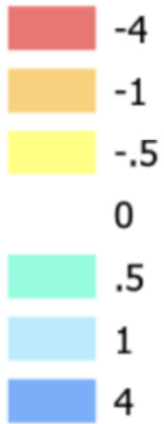




<https://storymaps.arcgis.com/stories/355bfc8b3c5941e683d4f258e8fb2dfa>



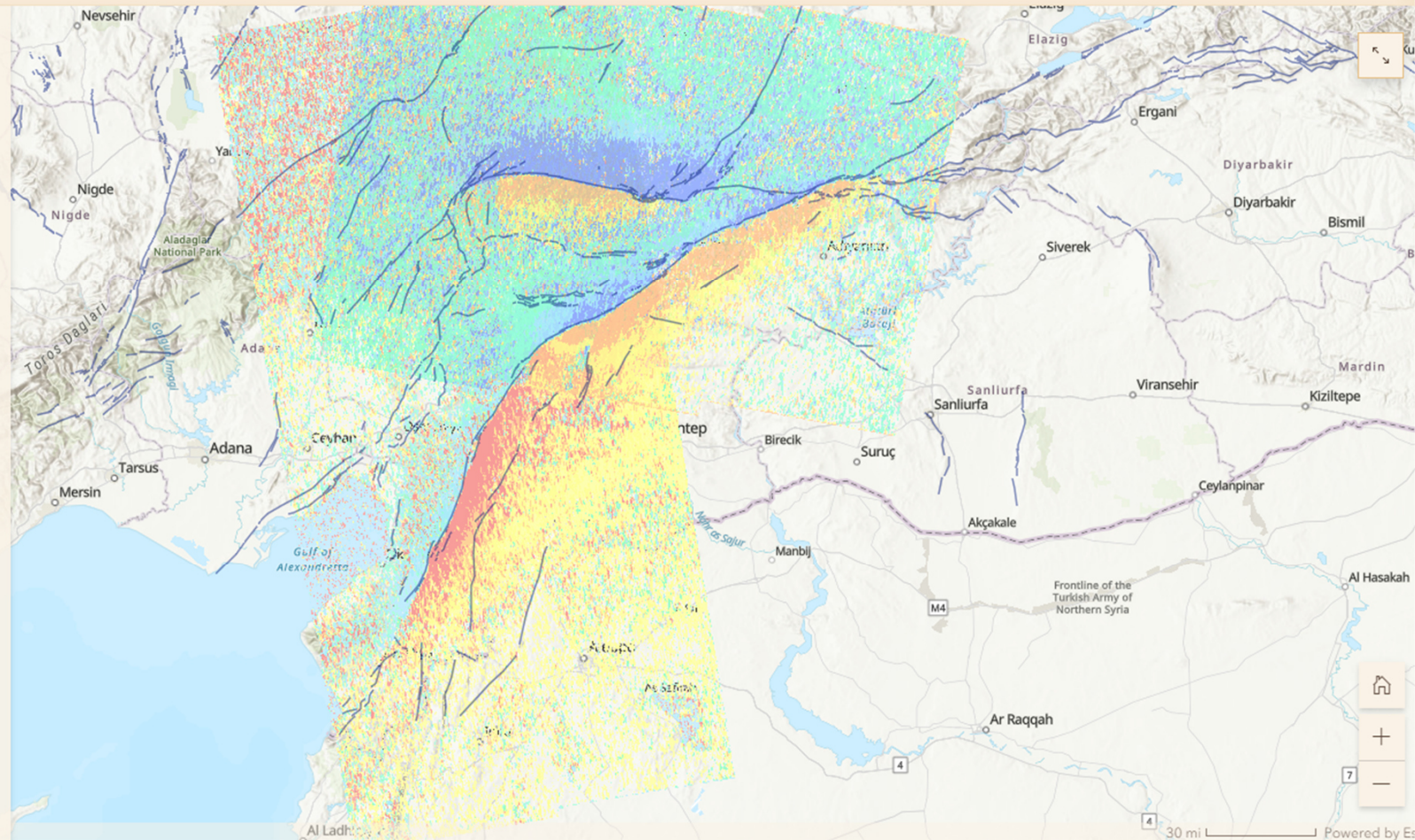
Displacement (m)



Legend for interpreting the amount and direction of fault offsets observed in the Sentinel-1 imagery.

The magnitude of surface displacements is towards and away from the satellite

View the displacement map with each respective epicenter.



<https://storymaps.arcgis.com/stories/355bfc8b3c5941e683d4f258e8fb2dfa>

DISASTER MANAGEMENT

Post-Disaster

- Response
- Recovery
- Reconstruction

Pre-disaster

- Prevention
- Mitigation
- Preparedness

<https://www.gktoday.in/disaster-management-pre-disaster-and-post-disaster-phases/>

POST DISASTER PHASE AND GDLRC

Response

- Search and Rescue Activities
- Damage Detection
- Monitoring Activities
- Monitoring of Building Deformation

Recovery

- Site selection
- Monitoring ground deformation

Reconstruction

- Re-establishing parcel boundaries
- Re-planning activities
- Expropriations
- Mass Housing Projects
- Management of Parcel Boundary Data



General Directorate of
Land Registry and Cadastre













POST DISASTER PHASE AND GDLRC

Response

- Search and Rescue Activities
- Damage Detection
- Monitoring Activities
- Monitoring of Building Deformation

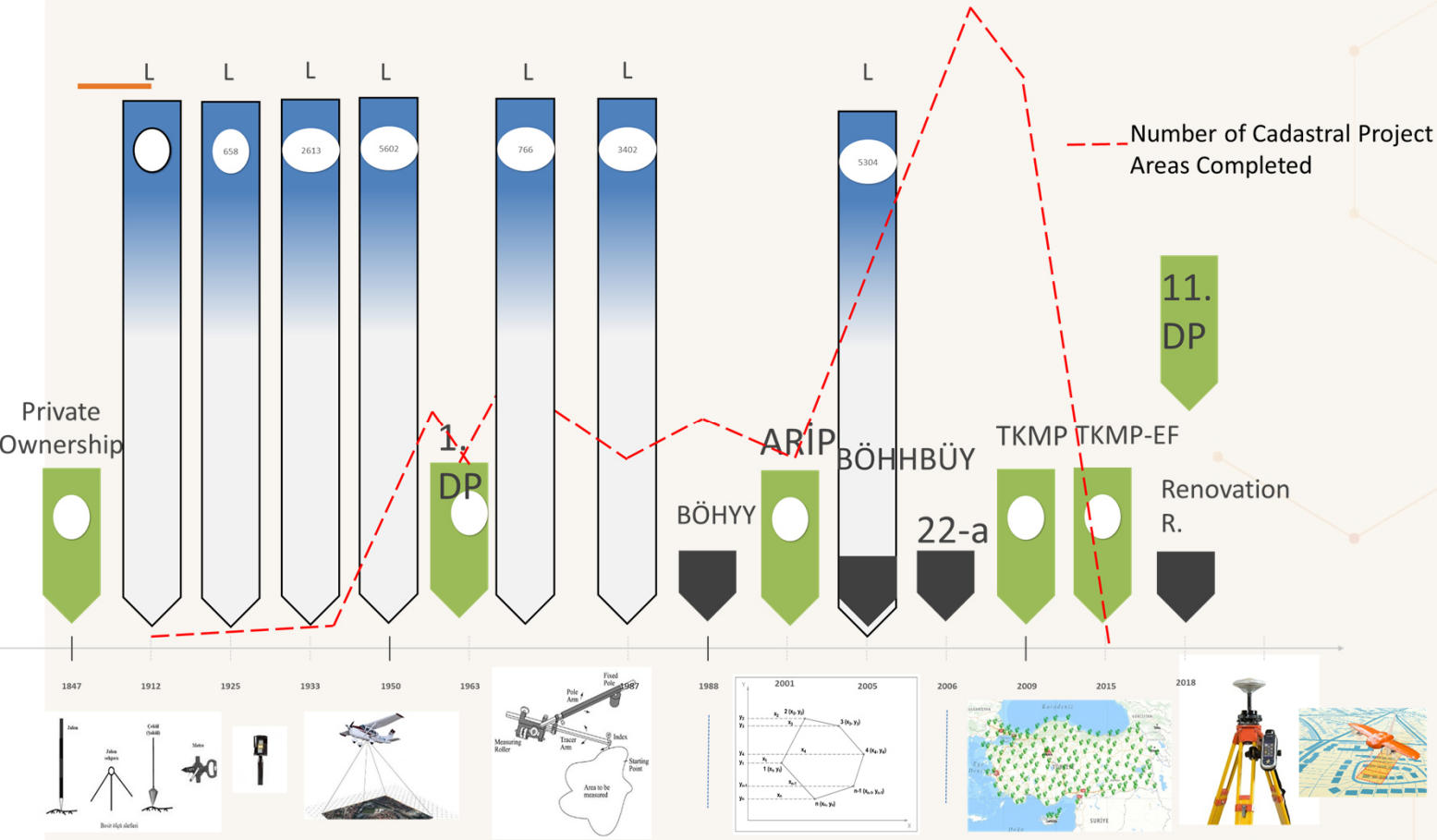
Recovery

- Site selection
- Monitoring ground deformation

Reconstruction

- Re-establishing parcel boundaries
- Re-planning activities
- Expropriations
- Mass Housing Projects
- Management of Parcel Boundary Data

CADASTRE IN TURKIYE



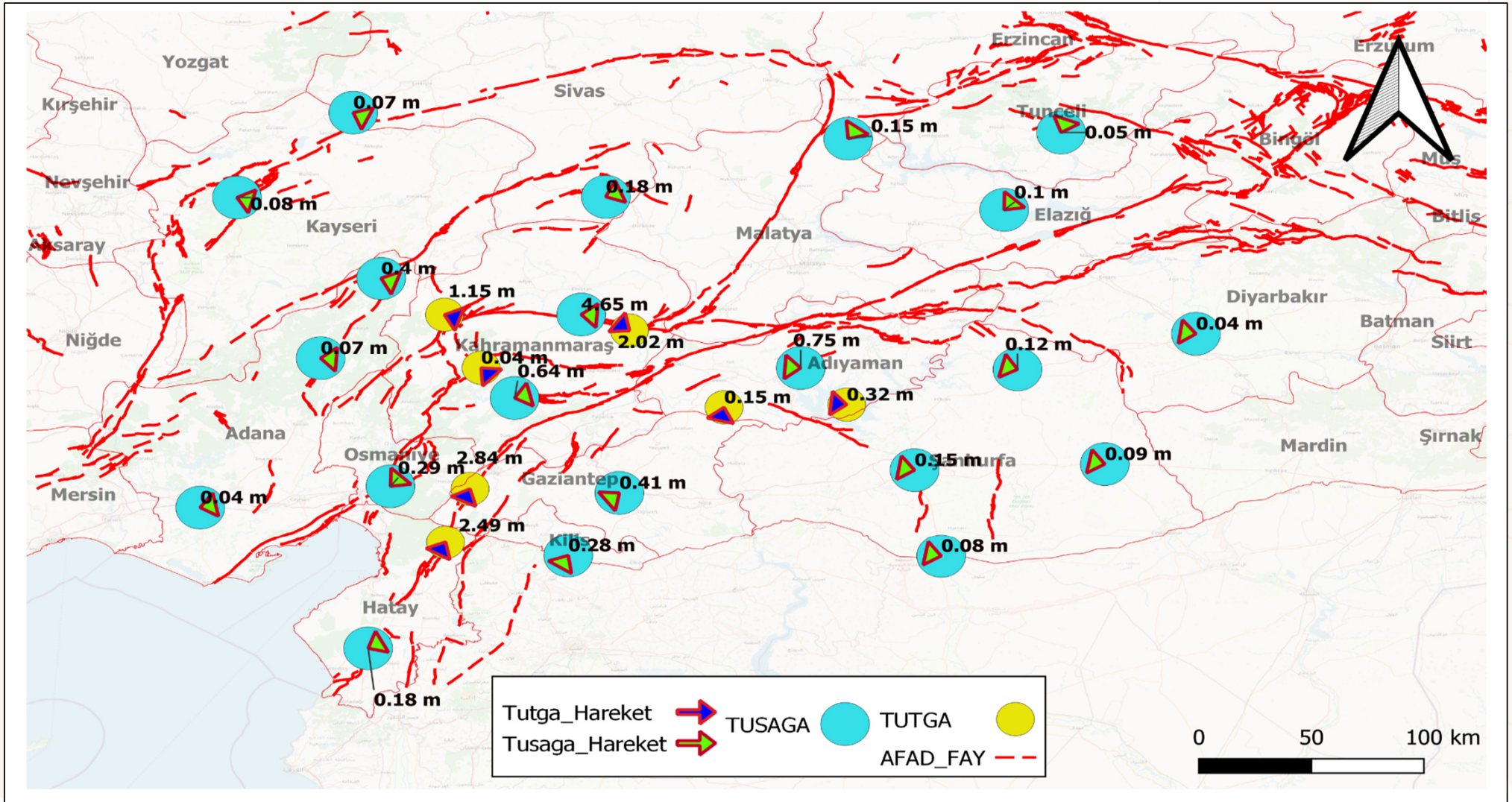
Cadastre; a tool for establishing land registries

Land registry → under the state guarantee

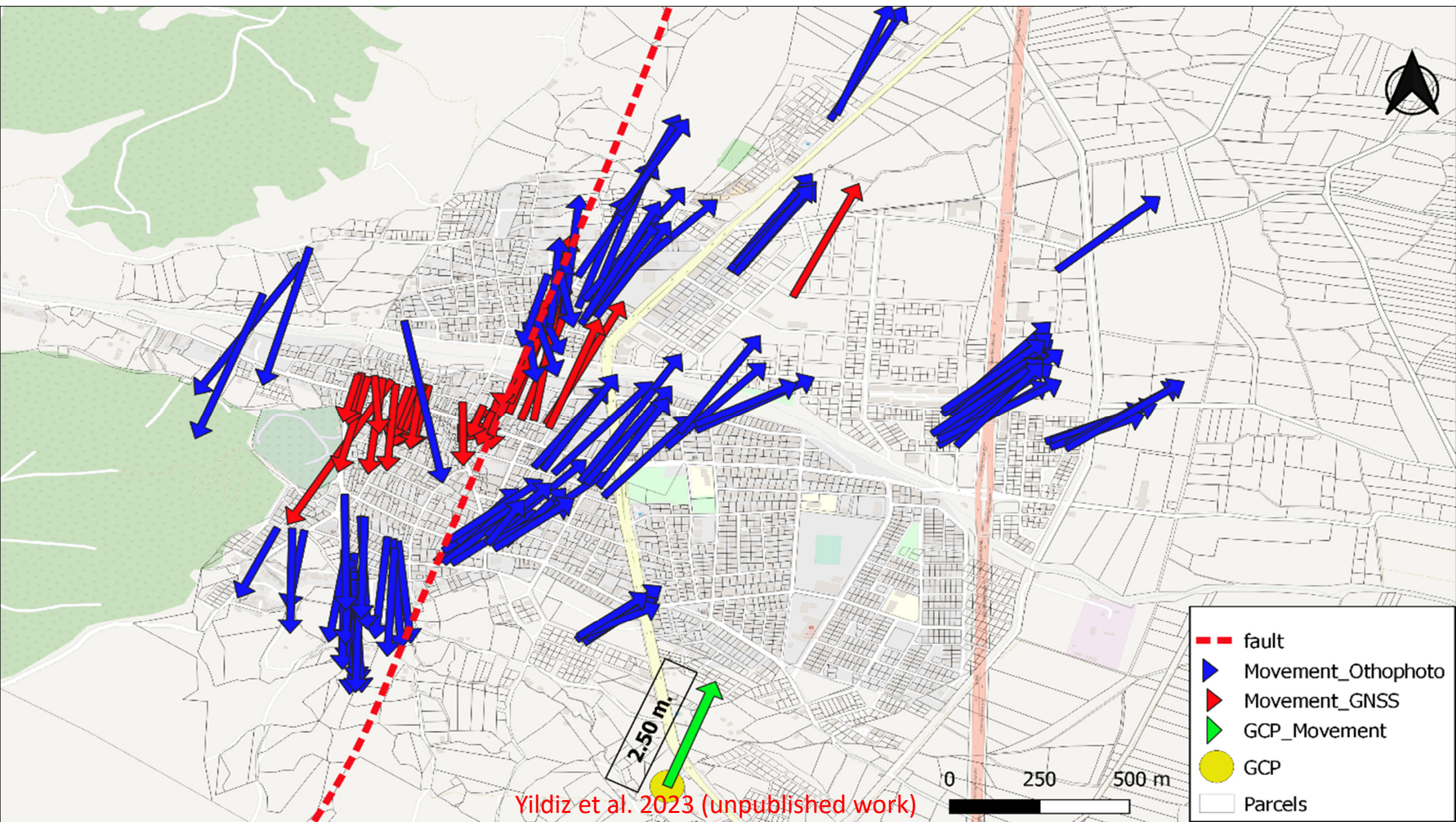
Ownership, Easements (personal/real), incumbrance, liens (mortgage etc), restrictions (public, private) and responsibilities (Civil Code Article 1000)

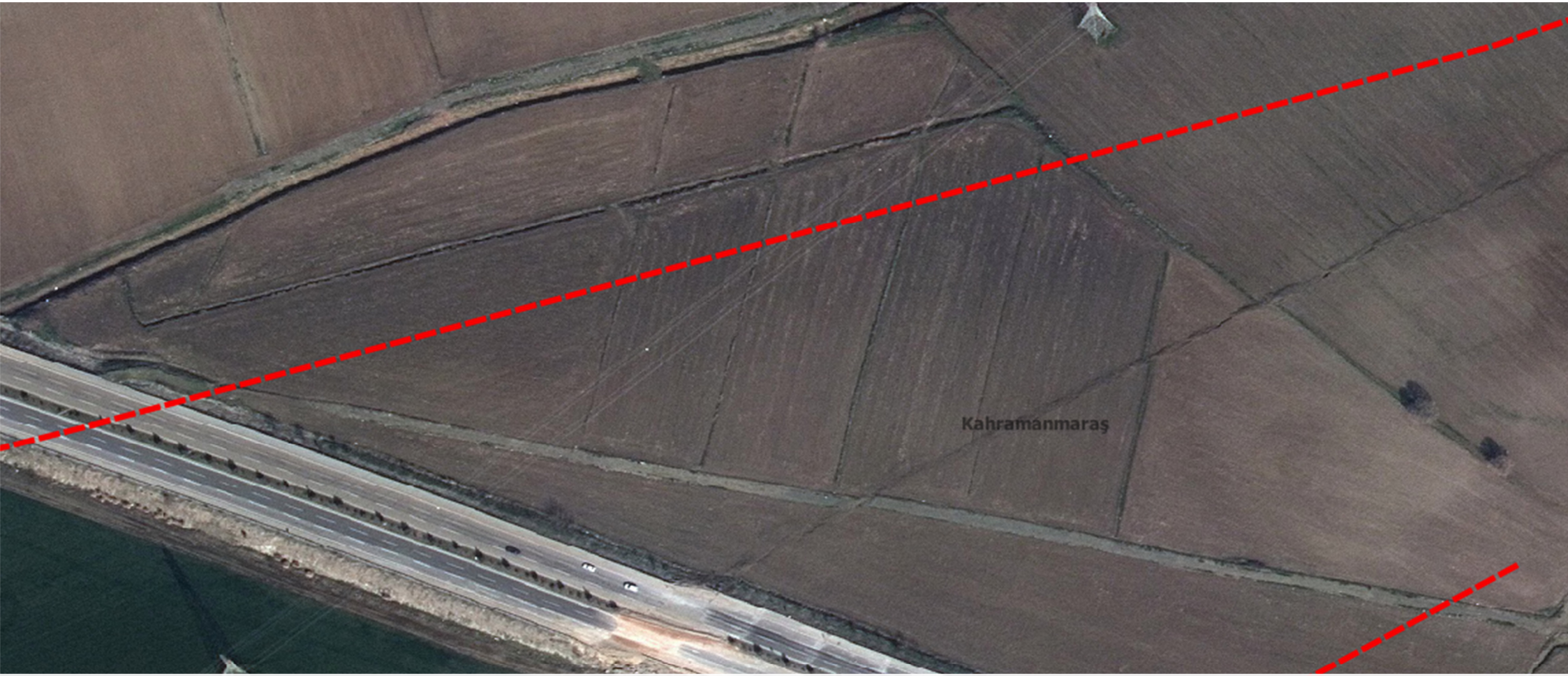
CADASTRE IN the EARTHQUAKE REGION

- Total parcel: 5.3 million (almost 10 % of the country)
- 4 / 5.3 produced with digital approaches
 - 3 million → ITRF96
 - 1.7 million → ED50
 - 0.5 million → local coordinat
 - 0.1 million → without any coordinates
- Renovation projects were still onging before earthquakes

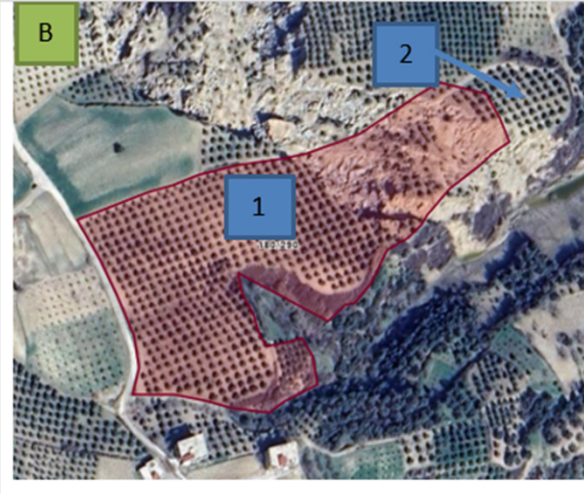


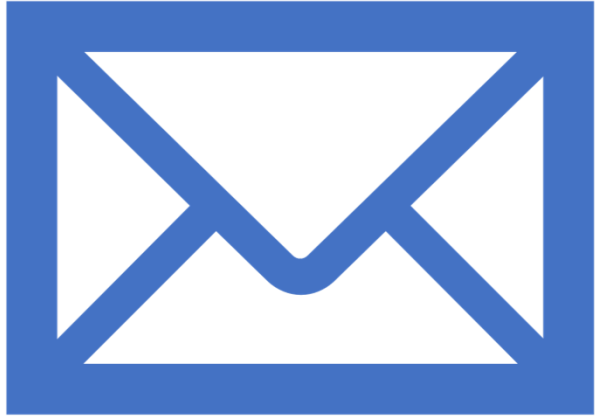






East Anotolian Fault (Parcelid : 103882438)





Thank you for attention.

uyildiz@tkgm.gov.tr

umityildiz1981@gmail.com