



RE-THINKING AUTHORIZED DATA OPENNESS: functioning of national geoportals during martial law

Dmytro Makarenko
State Service of Ukraine for Geodesy, Cartography and Cadastre

08 of June 2023, Gävle, Sweden



Key topics

- **StateGeoCadastrre: key responsibilities and martial law restrictions**
- **NSDI and geoportal operation during the war time**
- **E-Cartographic Fund of Ukraine**
- **State Land Cadastre of Ukraine during the war**
- **Security of SLC data under martial law**
- **Priorities and support for further development**

KEY DOMAINS OF RESPONSIBILITY:



Topography, geodesy, mapping



State Land Cadastre



Spatial Data Infrastructure



Land use & protection



Control for land use



Administrative services

- ❑ The Martial Law from February 2022
- ❑ Resolution of the Cabinet of Ministers of Ukraine "Some issues of ensuring the functioning of information and communication systems, electronic communication systems, public electronic registers under martial law" № 263 dated 12.03.2022
- ❑ Resolution of the Cabinet of Ministers of Ukraine "Some Issues of Maintaining and Functioning of the State Land Cadastre under Martial Law" № 546 dated 07.03.2022



Public Cadastre Map closed for the open access



State Geodetic Network Geoportal closed for the open access



NSDI Pilot Geoportal closed for open access



Geoportal of other central and local data holders

Main provisions:

- **All geospatial data are open, free and in public access**
- Definitions of “core” and “profile” data are given
- Annexes with INSPIRE data sets are included
- Geospatial data will be in the format in which they were created
- In accordance with INSPIRE services will be provided
- The administrator collects metadata, administers the NSDI geoportal and **provides easy data search/access**
- **Data holders are obliged to promulgate geospatial data at their websites/geoportals**



NSDI creation means:

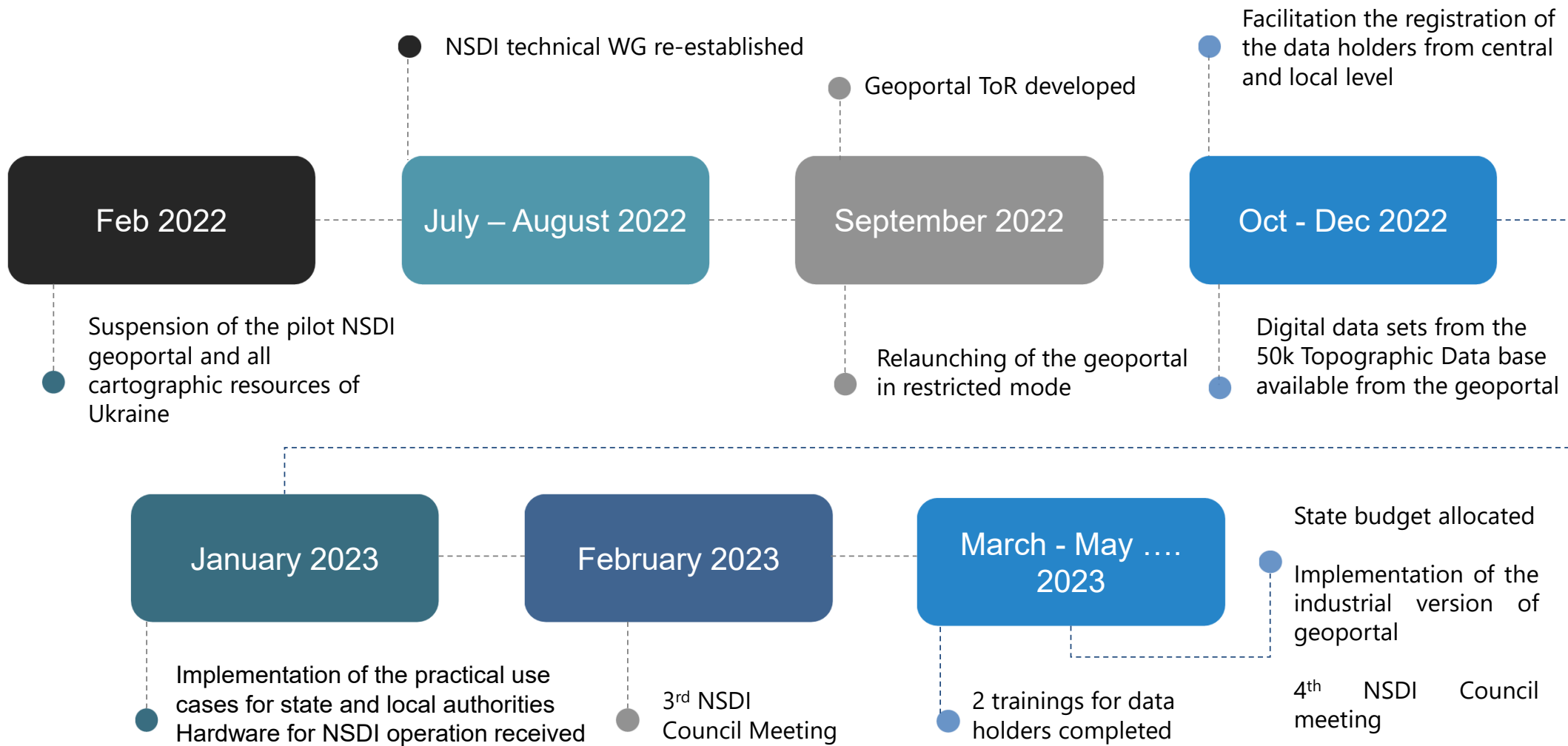
- To comply with INSPIRE and open data EU Directive
- Free georeferenced data



NSDI creation **DOESN'T** mean:

- To collect all data in single register
- To change the usage mode of geospatial data
- Changing the use of geospatial data

NSDI of Ukraine during the war



2020 > Pilot Project Implementation

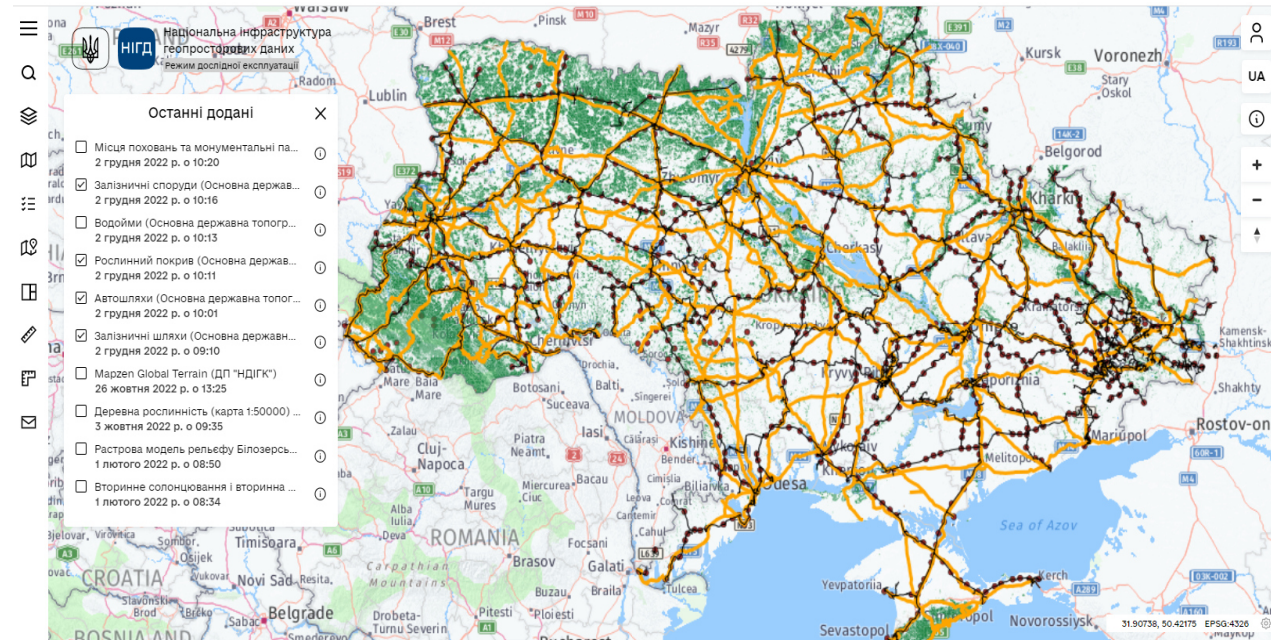
2021 > Launch of the NSDI Pilot Project Geoportal



WWW.NSDI.GOV.UA

2022 > Switching the Geoportal to a closed mode

2023 > Interaction between the information systems of the State Land Cadastre and the NSDI Pilot Project



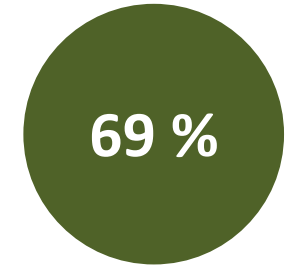
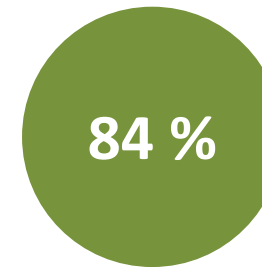
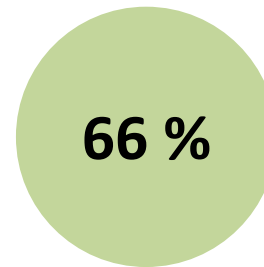
USERS VERIFICATION

1000+ verified users as of 25.05.2023

- ✓ central executive bodies – 16
- ✓ regional state administrations – 21
- ✓ amalgamated territorial communities – 1026

USERS OF THE GEOPORTAL:

- 16** Central Executive Authorities (66%) *NATIONAL LEVEL*
- 21** Oblast State Administrations (60%) *REGIONAL LEVEL*
- 1021** Territorial communities (67%) *LOCAL LEVEL*



DATA OF THE GEOPORTAL:

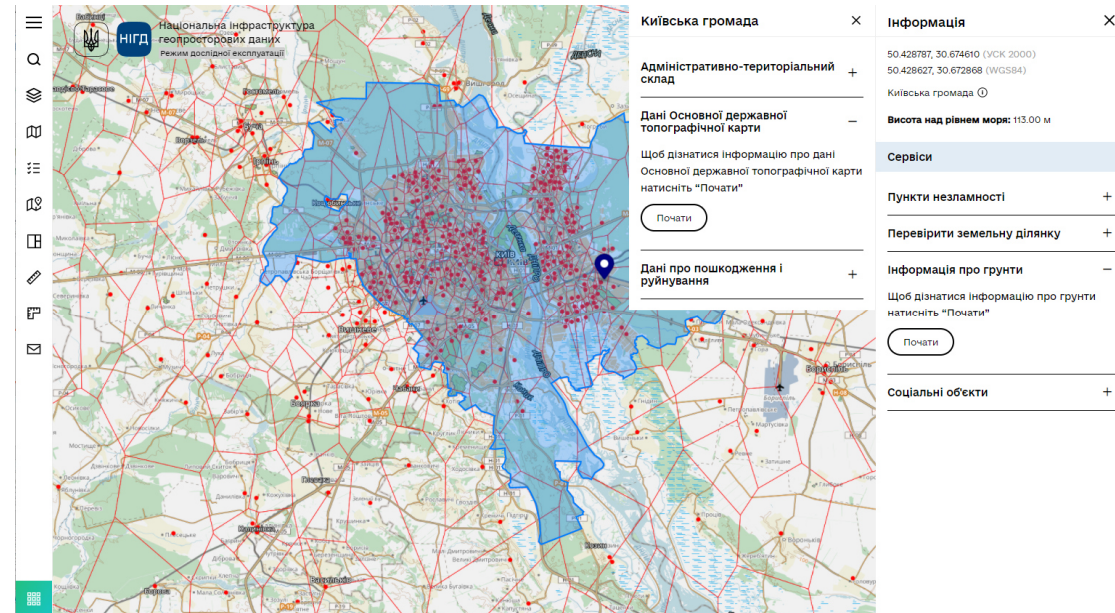
20+ national wide data sets
(available from the updated Main state topographic 50k map)
Geoportals of the data holders **are restricted** for the public use

PRACTICAL USE CASES WITH THE DATA:

Technical capabilities for making management decisions using NSDI data have been introduced by the principle:

- ❑ nationwide data for the entire territory of the country (territorial units, occupied or blocked areas, points of invincibility, land boundaries)
- ❑ spatial analysis of information in a point

(community passport, soils, buffer zone for invincibility points, land parcel check, buffer zone for social objects, damages)





Державний картографо-геодезичний фонд України

KEY PURPOSES

INTERACTION WITH DEVELOPERS

of topographic and geodetic, cartographic information and remote sensing data

TRANSFER OF INFORMATION AND DATA

to the State Cartographic Fund

2023

LAUNCH OF THE TRIAL OPERATION MODE



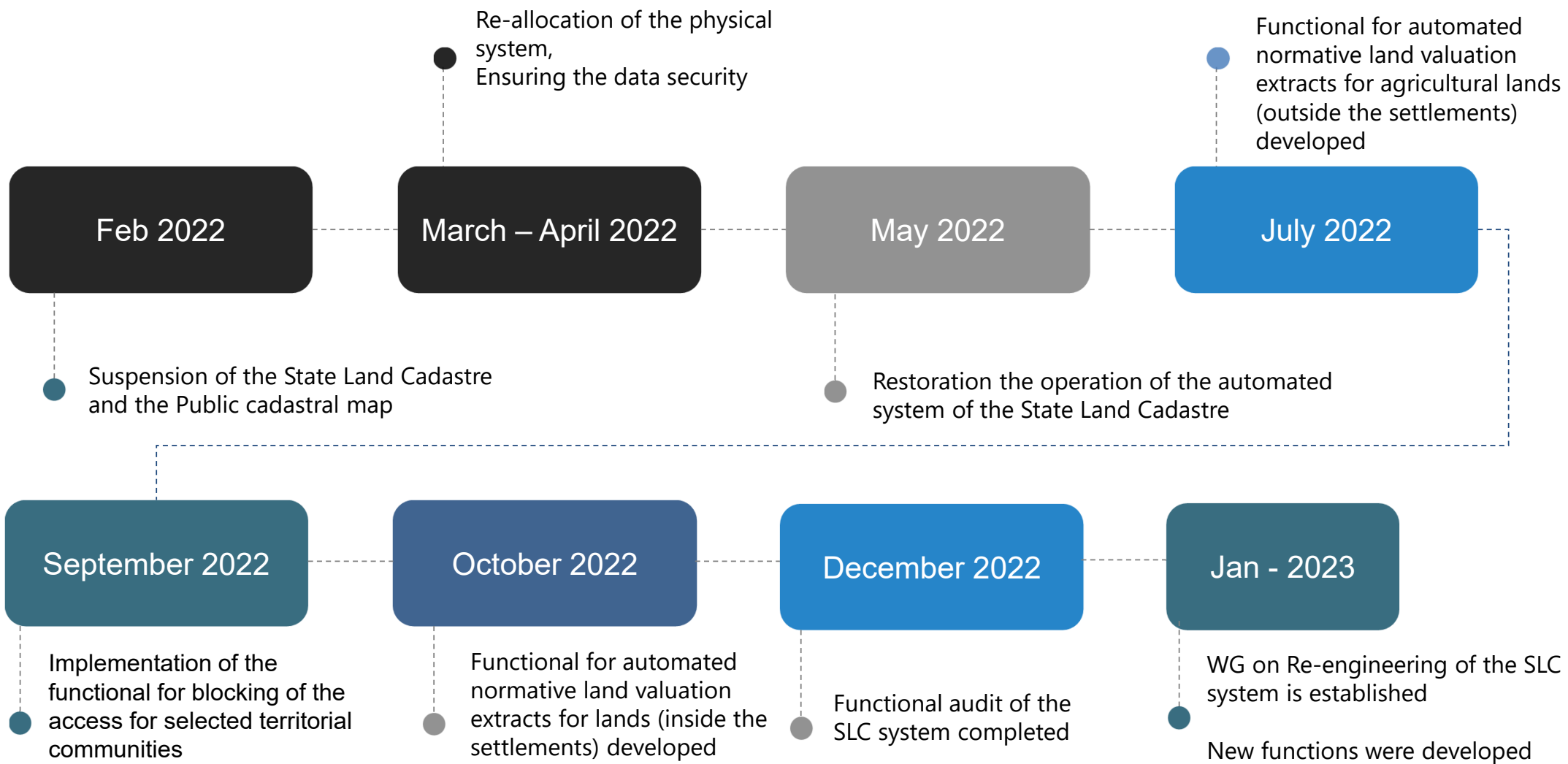
WWW.KARTFOND.LAND.GOV.UA

OUTCOMES

Providing validated topographic, geodetic and cadastral data

Saving budgetary funds for replication during the creation of such materials

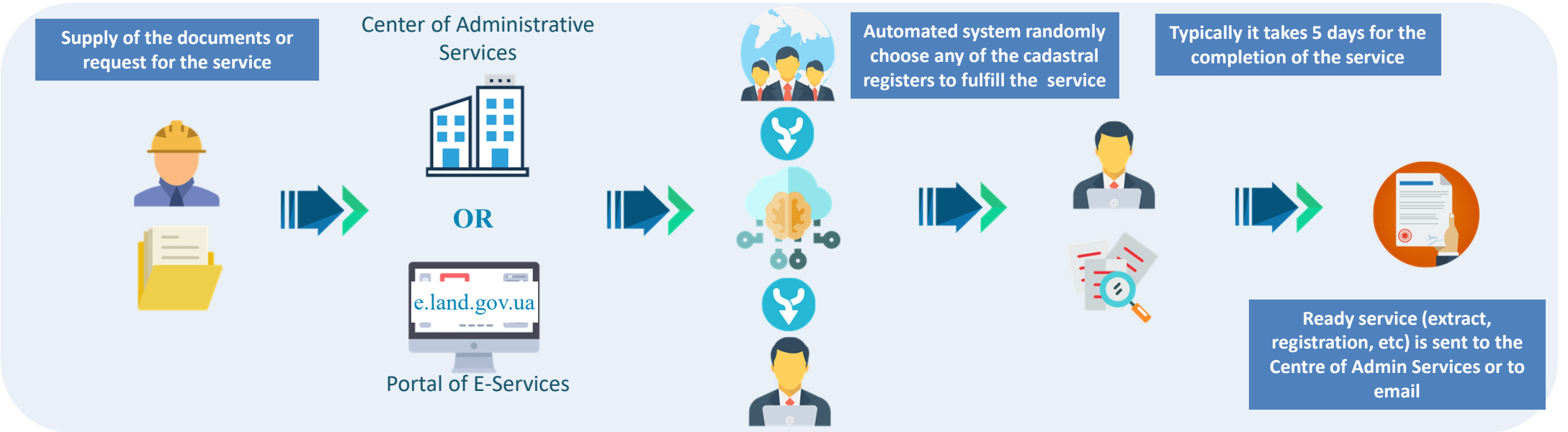
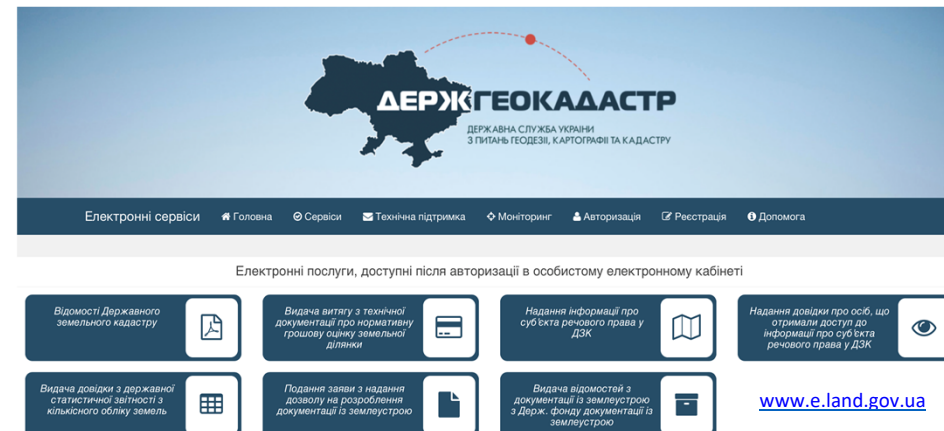
State Land Cadastre of Ukraine during the war



Portal of E-services – has been operational during martial law

Exterritorial approach – is the key principle of the land registration

The business process of the extraterritorial service:





Restriction of public access to data restrains the development on national and local level

Data integration, especially with SLC, is crucial for i) E-construction system, ii) de-mining projects, iii) taxation system

Data integration in close protected mode with SLC has been established with the key stakeholders



Public cadastral map will be closed until the Martial Law is active NSDI pilot geoportal will be restricted until the Martial Law is active



NSDI council suggestions on changes to the NSDI legislation on re-thinking of the open data approach were taken onboard

Data security and hardware sustainability are core priorities for SGC

STATEGEOCADASTRE

DIGITALIZATION ▪ DEREGULATION ▪ DE-SHADOWIZATION

THANK YOU FOR ATTENTION!

Dmytro Makarenko,

Deputy Chairman of the StateGeoCadastr



makarenko@land.gov.ua
d.makarenko89@gmail.com