



State Land Service  
Republic of Latvia

# A YEAR AFTER OPENING OUR DATA: EXPECTATIONS VS REALITY

Mr. Vents Priedoliņš  
Cadastral Development Manager

Riga, 2023

# 627

**EMPLOYEES ALL OVER  
THE COUNTRY**

Capital: **Riga**

Area: **64 589 km<sup>2</sup>**

Population: **1,86 million**

Local municipalities: **43**

State cities: **10**

Coastline: **498 km**



**1** **CENTRAL OFFICE**

**5** **REGIONAL ADMINISTRATIONS**

**18** **CUSTOMER SERVICE CENTERS**



The Cadastre  
Information System



Real Estate  
Market Database



The State Address  
Register

## OPEN DATA SINCE 2022



Information System Of  
Restricted Territories



High-detail Topographic  
Information Central  
Database

# WHERE TO FIND OUR OPEN DATA?



**LATVIAN OPEN DATA PORTAL**

<https://data.gov.lv/lv>



**INSPIRE GEOPORTAL**

<https://inspire-geoportal.ec.europa.eu/>



**EUROPEAN  
DATA PORTAL**

**OFFICIAL PORTAL FOR  
EUROPEAN DATA**

<https://data.europa.eu/lv>



# FEATURES OF THE OPEN DATA



REUSABLE



MACHINE READABLE



FREELY AVAILABLE  
WITHOUT  
REGISTRATION



UPDATED



FREE OF CHARGE



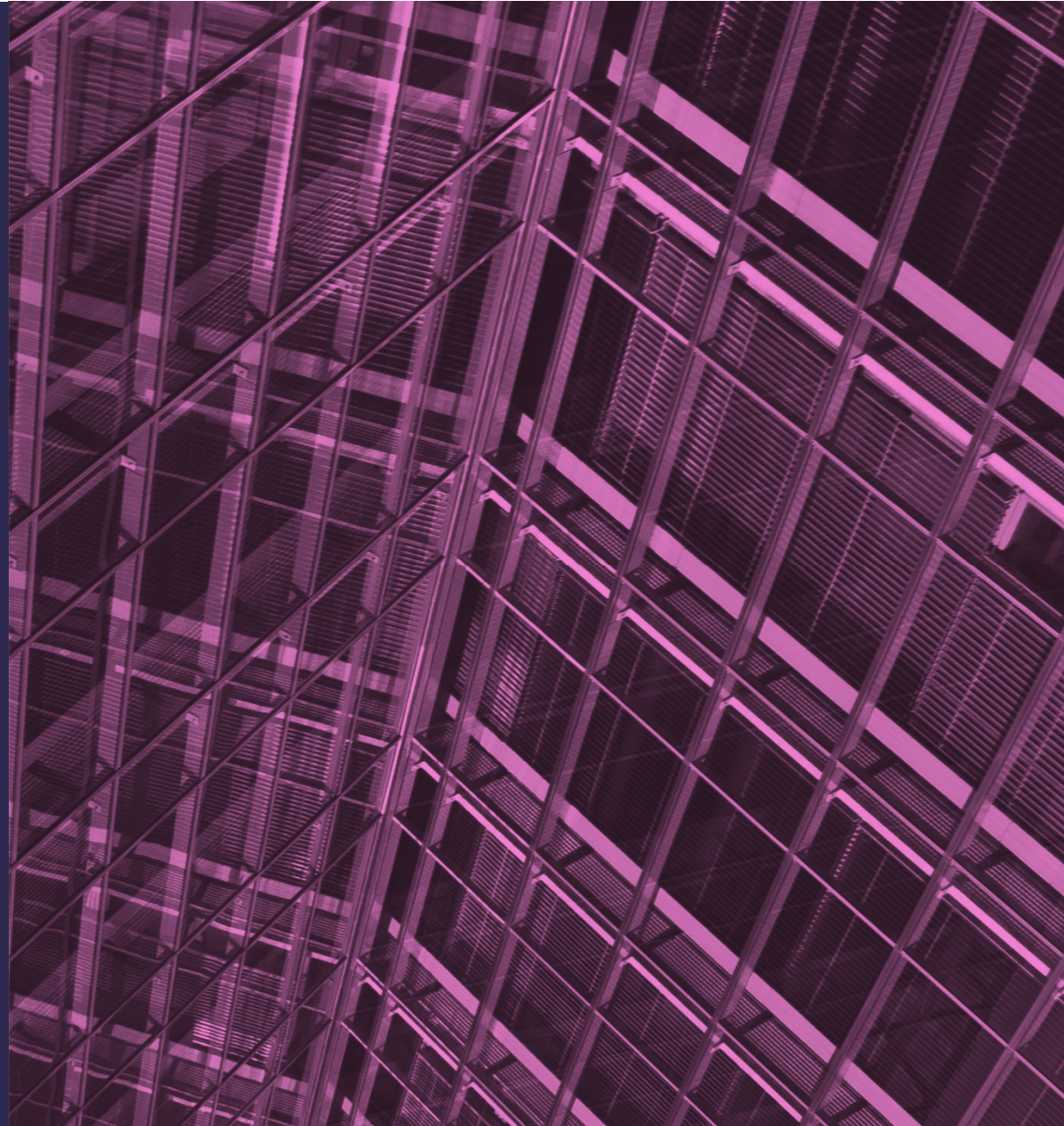
OPEN FORMAT FILES



Only **generally accessible data** are published in a form of open data!



# OPEN DATA OF THE STATE ADDRESS REGISTER



# DATA ON THE LATVIAN OPEN DATA PORTAL

*DATA.GOV.LV*

## CURRENT TEXTUAL DATA

in CSV format files [here](#)

## HISTORICAL TEXTUAL DATA

in CSV format files [here](#)

Data specification available [here](#)

## SPATIAL DATA

in SHP format files [here](#)

Data specification available [here](#)



Updated once a day



# DATA ON INSPIRE GEOPORTAL

*INSPIRE-GEOPORTAL.EC.EUROPA.EU*

*Data is available in a form of a **WMS web service** (ensures receipt of a raster map image) and a **WFS web service** (provides data retrieval)*

**Data corresponding to the theme of Annex I to the INSPIRE Directive Addresses**

Data specification available [here](#)

**Data corresponding to the theme of Annex I to the INSPIRE Directive Administrative units**

Data specification available [here](#)



**Updated once a week**



# OPEN DATA OF THE CADASTRE



**CADASTRE  
DATA ON THE  
LATVIAN OPEN  
DATA PORTAL**  
*DATA.GOV.LV*

## TEXTUAL DATA

in a form of XML files [here](#)

Data specification available [here](#)

## SPATIAL DATA

in a form of SHP files [here](#)

Data specification available [here](#)



### UPDATES:

Textual and spatial data in a form of SHP file – once a week

# CADASTRE DATA ON INSPIRE GEOPORTAL

*INSPIRE-GEOPORTAL.EC.EUROPA.EU*

*Data is available in a form of a **WMS web service** (ensures receipt of a raster map image) **and a WFS web service** (provides data retrieval)*

Data corresponding to the theme **CADASTRAL PLOTS** of Annex I to the INSPIRE Directive *Addresses*

Data specification available [here](#)

Data corresponding to the theme **BUILDINGS** of Annex III to the INSPIRE Directive

Data specification available [here](#)



## **UPDATES:**

**Textual and spatial data in a form of SHP file – once a week**

# THE OPEN DATA OF THE REAL ESTATE MARKET DATABASE

*DATA.GOV.LV*

## REAL ESTATE MARKET OPEN DATA AND STATISTICS

CSV and XLS files [here](#)

Data specification available [here](#)

- The specification contains information on real estate market data in CSV format in UTF-8 encoding;
- Data available in 10 compressed directories – NITIS\_CSV\_[year].zip on transactions with real estate, including land, buildings and apartments

### UPDATES:



- **Information on market transactions – once a month**
- **Average transaction prices and amount – half-yearly (March, October)**

# DATA ON THE VALID ZONING OF THE CADASTRAL VALUES\*

**DATA.GOV.LV**

*\* was available before January 1,  
2022 on different sources*

## VALID ZONING OF THE CADASTRAL VALUES, DEVELOPED FOR 4 GROUPS:

- Rural real estate group,
- Residential building real estate group,
- Industrial building real estate group,
- Commercial and public building real estate group.

SHP format files [here](#)

Data specification available [here](#)



**Updated once every 4 years**

**THE OPENING OF  
OUR DATA MADE  
US STRONGER!**





## OPENING OF OUR DATA WAS LIKE **AN EXAM OF MATURITY** FOR US BECAUSE:



We have data quality assistants  
– data enthusiasts now.



We have more valuable data  
than we thought before.



Our communication with users  
of our data is more open.



Opening of data made  
our team more cohesive.



# EXPECTATIONS VS REALITY

# EXPECTATION

We will not be able to deal with the customer inquiries

## REALITY

We were afraid of several hundreds of questions, but in fact we got approx. 46 questions per quarter



50% of cases are consultations regarding the open data

# EXPECTATION

We will not be able to deal with all complaints regarding the data quality

# REALITY

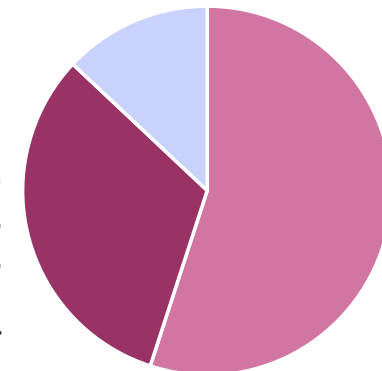
Of all the messages received, 42% are error notifications of which:

**13%**

For an error, the update of which must be proposed by the owner

**32%**

For a mistake which was checked and was not detected to be an error



**55%**

On error which was detected and resolved



The investment in data quality management was justified

# EXPECTATION

We thought that opening our data would sharply reduce the demand for the data services

## REALITY



The demand for high value-added data services increased **by 10%**



We no longer provide basic data services

# EXPECTATION

We thought that opening our data would have a negative impact on our reputation

# REALITY



The society is more supportive than expected



Cooperation with the non-governmental sector is now stronger - we understand each other better

# EXPECTATION

We will not know if and how the public uses our data

# REALITY

We have no control over data usage!



**We know some socially active examples:** *Jana seta group/ dodies.lv, Openstreet map, Lursoft*



*data.gov.lv* we are **TOP 10** with our Open data

**CONCLUDING  
OUR STORY  
AND MOVING  
TOWARDS OUR  
COMMITMENT:**

We have 2 unopened datasets as seen before.

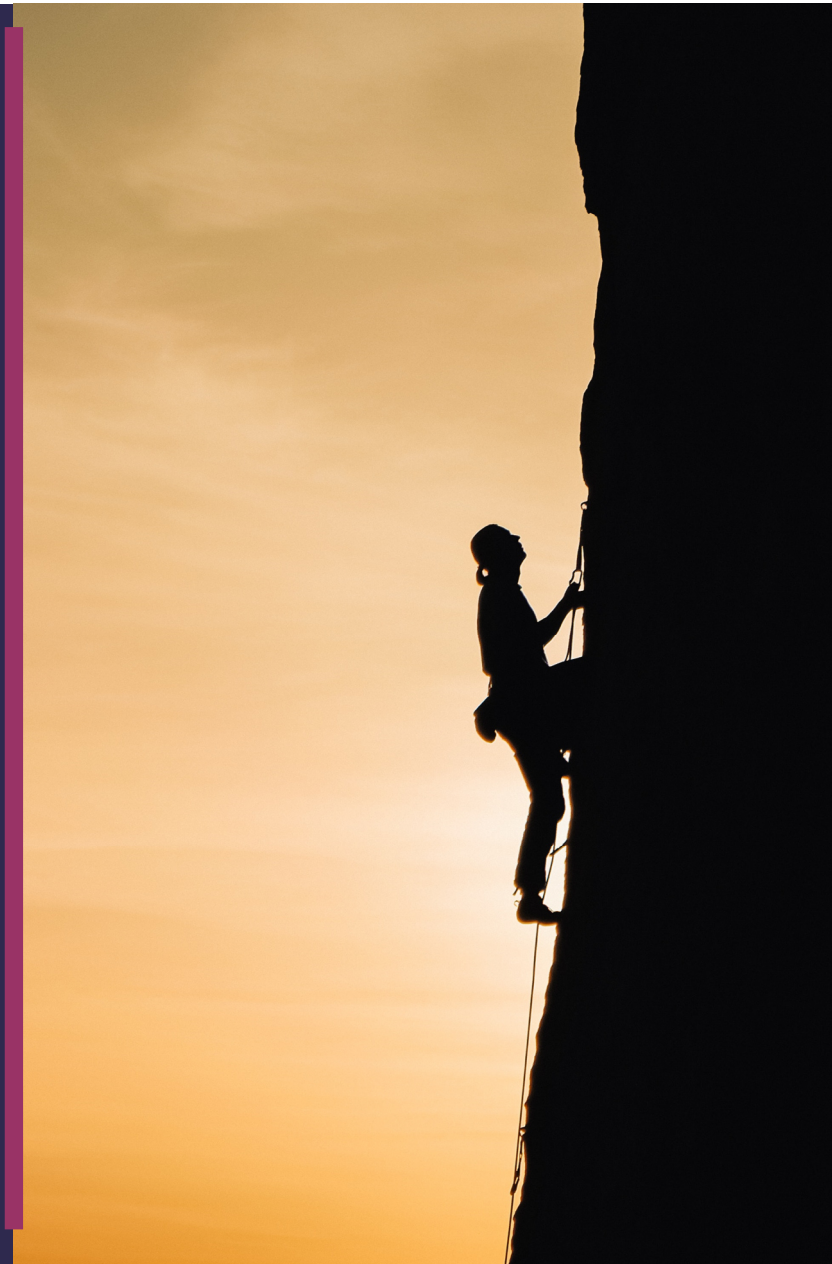
We are working on the necessary regulations in cooperation with the national security authorities to make them open.



**WE ARE NOTICED INTERNATIONALLY–  
Google IS INTERESTED IN USING OUR  
ADDRESS DATA!**

## OUR COMMITMENT

WE WILL CONTINUE TO  
PUBLISH NEW DATASETS AND  
TO IMPROVE THE EXISTING  
ONES



**FOLLOW US**



**TAKE A LOOK**

*[www.vzd.gov.lv](http://www.vzd.gov.lv)*

*[www.kadastrs.lv](http://www.kadastrs.lv)*



State Land Service  
Republic of Latvia



**ANY REMARKS?**