An aerial photograph of a city street, likely in Madrid, showing a mix of traditional brick buildings and modern structures. A prominent feature is a large green field in the center of the street. The image is overlaid with a semi-transparent dark blue banner containing white text.

EuroGeographics updates

Patricia Sokacova

Joint PCC-EuroGeographics
Conference 25-27 October 2023 Madrid

New head of EuroGeographics

Sallie Payne-Snell

Secretary General and
Executive Director



Delivering value to you

- Facilitating access to your data & demonstrating its importance
- Representing your interests
- Maintaining a knowledge exchange network to support you in improving your capabilities & role



Knowledge Exchange



Webinars



Events



KENs

2,000+ total participants

Members-only webinars

Cadastre & Land Registry, Policy, Quality & INSPIRE KENs

Workshops with EuroSDR

Events extending our reach beyond NMCA communities

Talking Heads programme

Permanent Correspondents Exchange

Participation in member events and one-on-one meetings

Constant monitoring of information, and policy evolution, with weekly updates

Members' webinar on 14 September

Spain: Enhanced services for citizens: 3D Cadastre

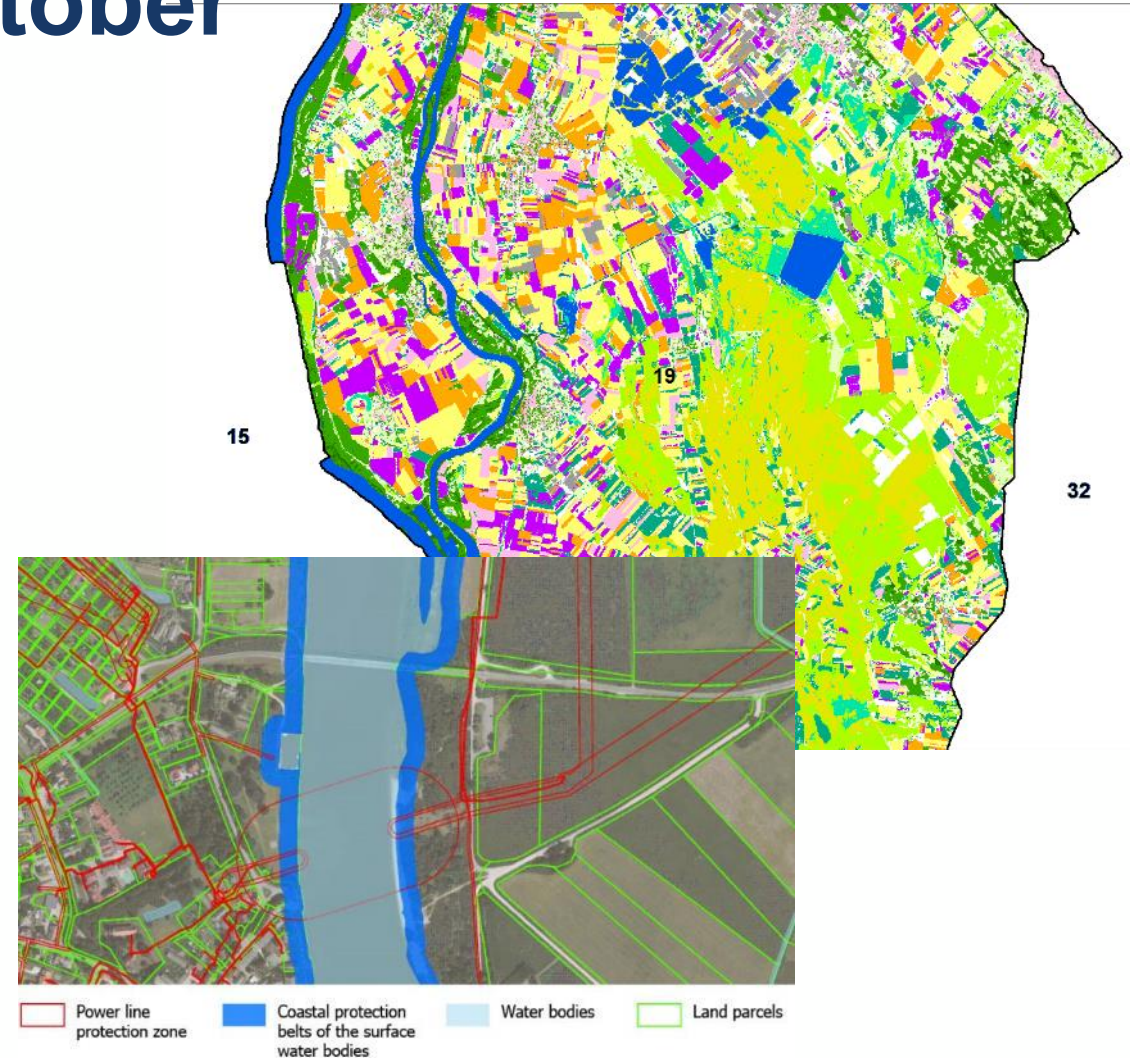
Latvia: Open datasets of the National Real Estate Cadastre Information and more



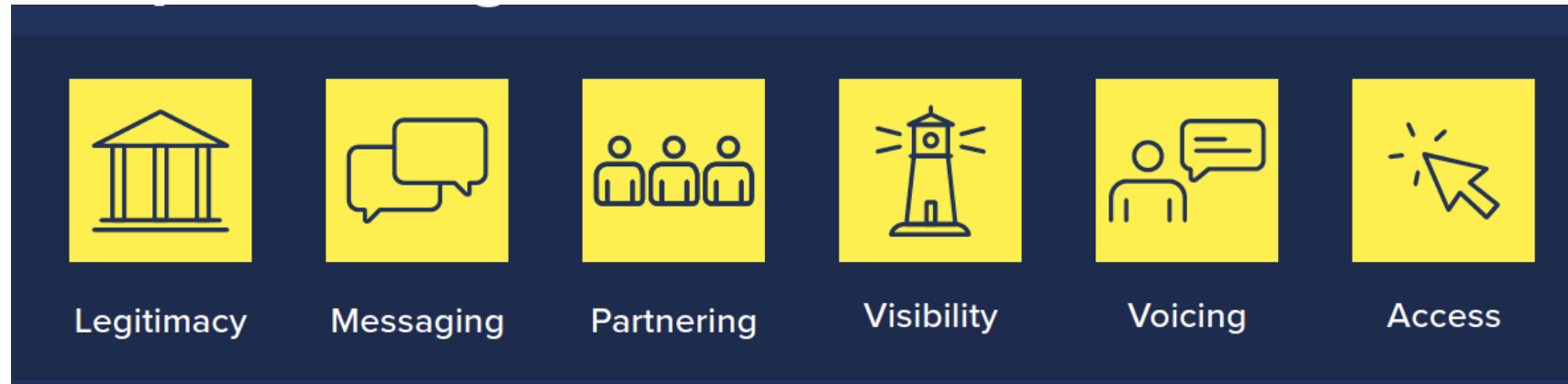
Members' webinar on 19 October

Hungary: Special mapping combining Machine Learning with Earth Observation for the Land Parcel Identification System LPIS

Lithuania: Registration of special land use conditions on the cadastral map



Representing your interests



Data Access and Integration



Delivering Open Maps for Europe to support Open Data and Re-Use of Public Sector Information.



Providing data for policy making, monitoring and measurement.



Meeting current and future user requirements to keep official geospatial data relevant.



eurostat

European Environment Agency



Copernicus
Europe's eyes on Earth

OME2

Digital Europe Programme
Grant Agreement No 101100625



Co-funded by
the European Union

OCM goals and reasons to participate

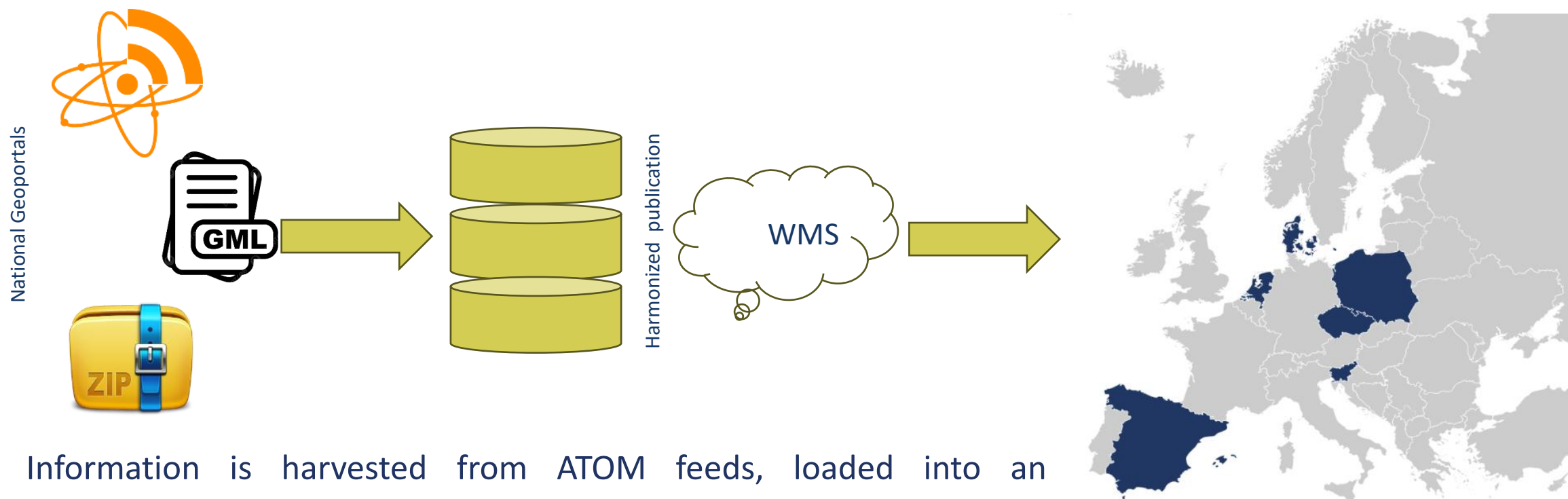
The OCM aims to :

- **provide** users with a simplified and harmonised web service of all the INSPIRE themes Cadastral Parcels (CP), Buildings (BU), Addresses (AD) and Administrative Units (AU) from one single point.
- **establish** an unified pan-European cadastral map and a fundamental layer of authoritative data in Europe (High Value Datasets) that can generate significant socioeconomic and environmental benefits.
- **satisfy** the everyday needs of a wide spectrum of users
- **support** NMCAs in implementing rules for the Open Data by re-using OME2 techniques nationally and sharing good practices.
- **increase NMCAs' prominence** as key authoritative data providers in Europe



Co-funded by
the European Union

Publishing Data on the OCM



Information is harvested from ATOM feeds, loaded into an intermediate database and published in a more harmonized way.

Periodical updates are planned.

Work development

First stage: Identify which countries to include for the first coverage expansion

Members contacted to allow to express their interest

Prioritization

- Members that have sent a written positive reply to the EG invitation of May 18th
- Members that have given verbal confirmation that they want to participate
- **National portals have been visited, OCM relevant datasets has been discovered and ATOM feeds has been explored and carried out initial checks over the data.**



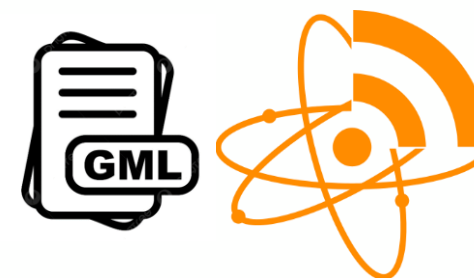
Co-funded by
the European Union

Digital Europe Programme
Grant Agreement No 101100625

First Outcomes

Among members that responded:

- ✓ Some have both the required datasets in INSPIRE gml formats and openly provided via INSPIRE AtomFeeds.
- ✓ Some have the required datasets in INSPIRE gml formats, openly available for direct download but no AtomFeeds implemented.
- ✓ Some have INSPIRE AtomFeeds implemented but the data format is not gml.
- ✓ Some others still have legal restrictions but are very willing to participate once those restrictions extinct.
- ✓ Some faced security issues and had to temporarily deactivate their services.



We'll work with and support members to achieve compliance



Our Next Steps

An update for the current datasets is ongoing and expected to be available by January 2024.

Final decision about the four (4) new countries that will extend the OCM before March, 2024.

Implementing INSPIRE AtomFeeds when INSPIRE gml formats already exist will be the first cases that will be examined.

We will need contact persons from each member country to establish regular communication with an aim to ensure the provision of compliant data.



Find out more about the OCM and Get involved

- **Guide for Data Producers:**

An informative document describing how to generate the necessary files to incorporate your country's national cadastral datasets to the Open Cadastral Map have been developed within the OME2 project and is available.

- **Contact us**

We will be more than happy to answer your questions regarding the project and your potential participation.

Contacts:

Hara Papadaki, hpapadak@ktimatologio.gr

Javier Luque, javier.luque@catastro.hacienda.gob.es



OPEN CADASTRAL MAP |

Guide for Data Producers

This document contains a simple description of how to generate the necessary files to incorporate the national cadastral datasets to the Open Cadastral Map that EuroGeographics is developing within the OME2 project (Open Maps for Europe2) and is structured in the following sections:

1. What is Open Cadastral Map
2. Implementation of ATOM FEEDS
3. [GetFeatureInfo](#) functionality
4. Licences and Attribution
5. OME2 plan for Open Cadastral Map and contact

1. What is Open Cadastral Map

The Open Cadastral Map is a view service that provides a simplified and harmonised view of the INSPIRE themes: Cadastral Parcels (CP), Buildings (BU), Addresses (AD) and Administrative Units (AU), all of them High Value Data set, for pan-European use.

It is not one single map layer. It is composed by theme-specific map layers organised theme-wise. Each theme has its [layers](#) and the styles are defined for each layer. This also makes the Open Cadastral Map visualization more flexible, as the layers can be individually switched on and off.

<https://www.mapforeurope.org/datasets/cadastral-all>



Co-funded by
the European Union

Digital Europe Programme
Grant Agreement No 1011100625

Thanks!