

# 3D Spanish Cadastre and GeoE3 project



UE23

PRESIDENCIA ESPAÑOLA  
CONSEJO DE LA UNIÓN EUROPEA



MINISTERIO  
DE HACIENDA  
Y FUNCIÓN PÚBLICA

SECRETARÍA DE ESTADO  
DE HACIENDA

DIRECCIÓN GENERAL  
DEL CATASTRO



# Overview



3rd  
dimension  
in Spanish  
Cadastral

3d viewer

HVD

GeoE3

Final  
comments



MINISTERIO  
DE HACIENDA  
Y FUNCIÓN PÚBLICA

SECRETARÍA DE ESTADO  
DE HACIENDA

DIRECCIÓN GENERAL  
DEL CATASTRO

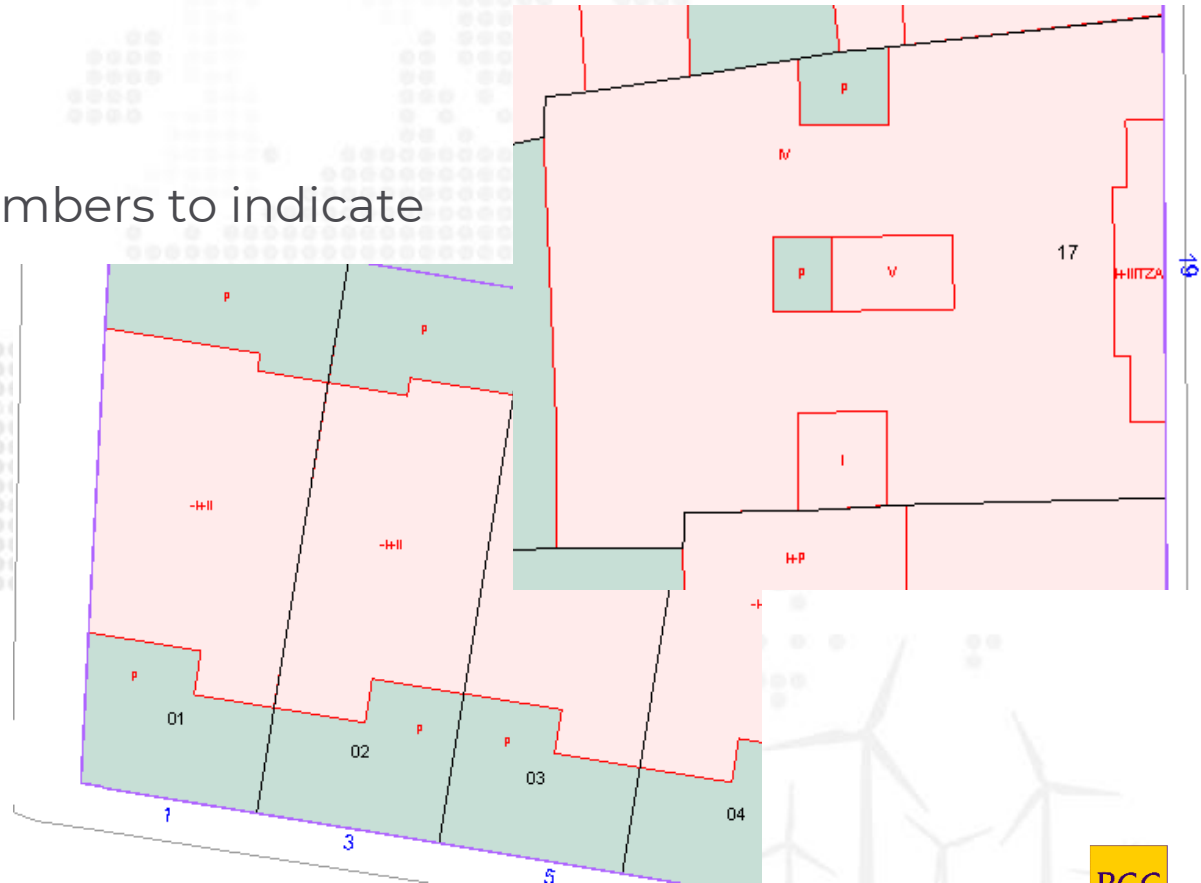


# 3<sup>rd</sup> dimension in Spanish Cadastre

Since long time ago, 3rd dimension has been present in Spanish Cadastre data

Buildings → romans numbers to indicate numbers of floors

- -I+II: One floor below ground level and 2 floors above ground level
- IV: 4 floors above ground level
- V: 5 floors above ground level
- ...



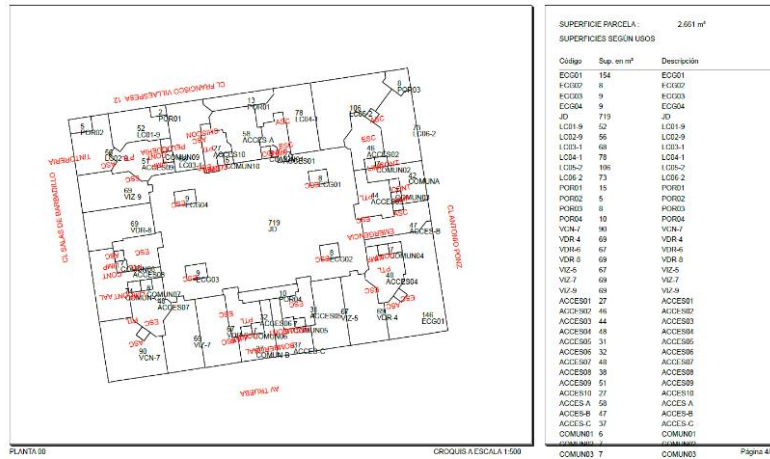
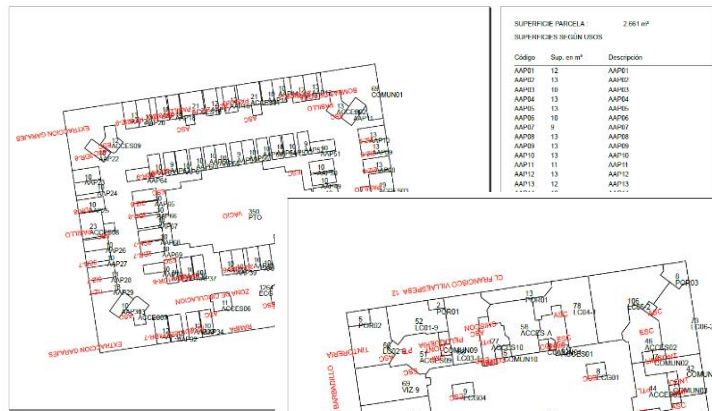
# 3<sup>rd</sup> dimension in Spanish Cadastre



Also, available through blueprint of floor division.

This information is free available to public...

...but not easy to understand for all users.



GOBIERNO DE ESPAÑA  
MINISTERIO DE HACIENDA Y FUNCIÓN PÚBLICA

SECRETARÍA DE ESTADO DE HACIENDA  
DIRECCIÓN GENERAL DEL CATASTRO



# 3<sup>rd</sup> dimension in Spanish Cadastre

Since beginning 21<sup>st</sup> century Spanish Cadastre has been providing 3D models of buildings, but they were limited to Google Earth



That means:

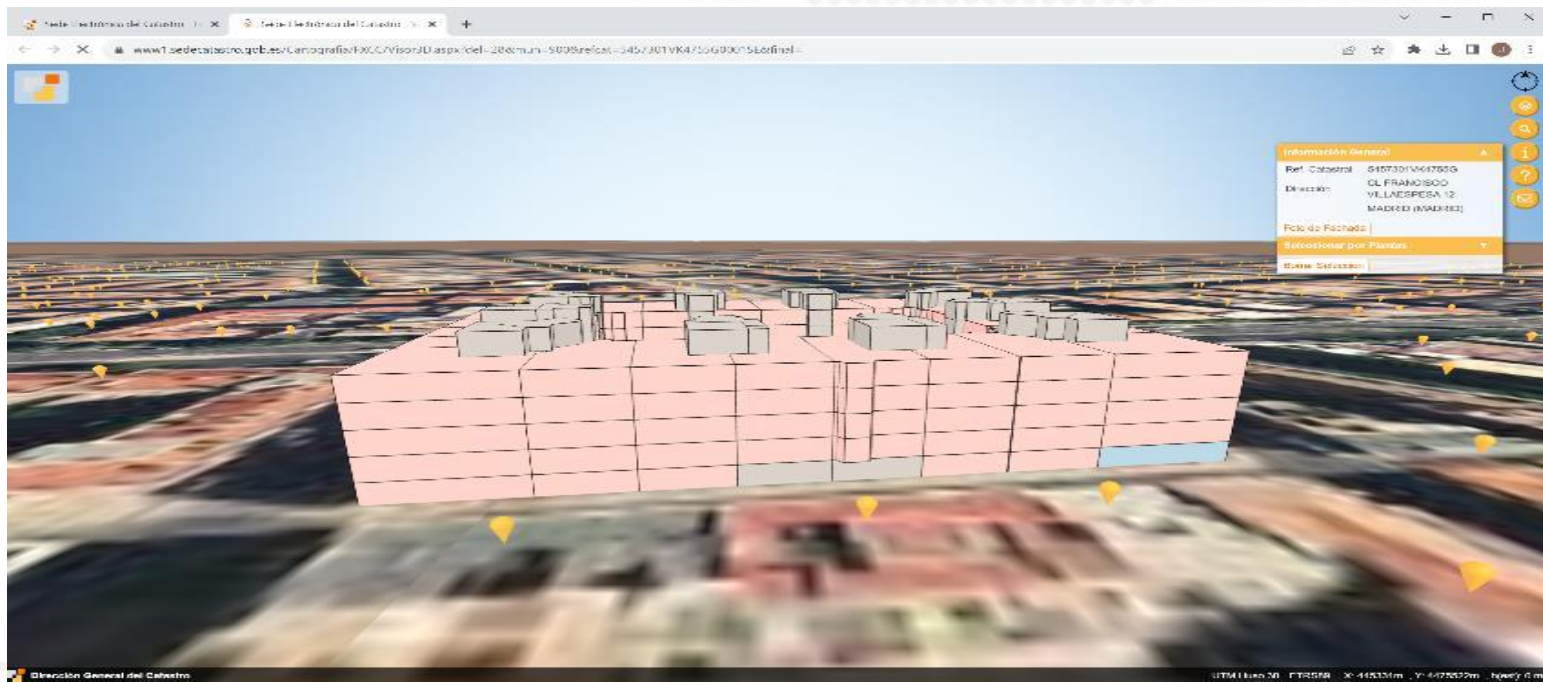
- User installation of proprietary software is required.
- Limitations in the representation of the buildings, few alternatives in the customization of the view.

# 3D Cadastral Viewer



New way to access information about buildings, without requiring external applications.

Fully integrated in Spanish Cadastre's Electronic Office and Site and cadastral map viewer.



GOBIERNO DE ESPAÑA

MINISTERIO DE HACIENDA Y FUNCIÓN PÚBLICA

SECRETARÍA DE ESTADO DE HACIENDA

DIRECCIÓN GENERAL DEL CATASTRO



# 3D Cadastral Viewer

Offer users different kind of views and functionalities.

**Mapa Base**

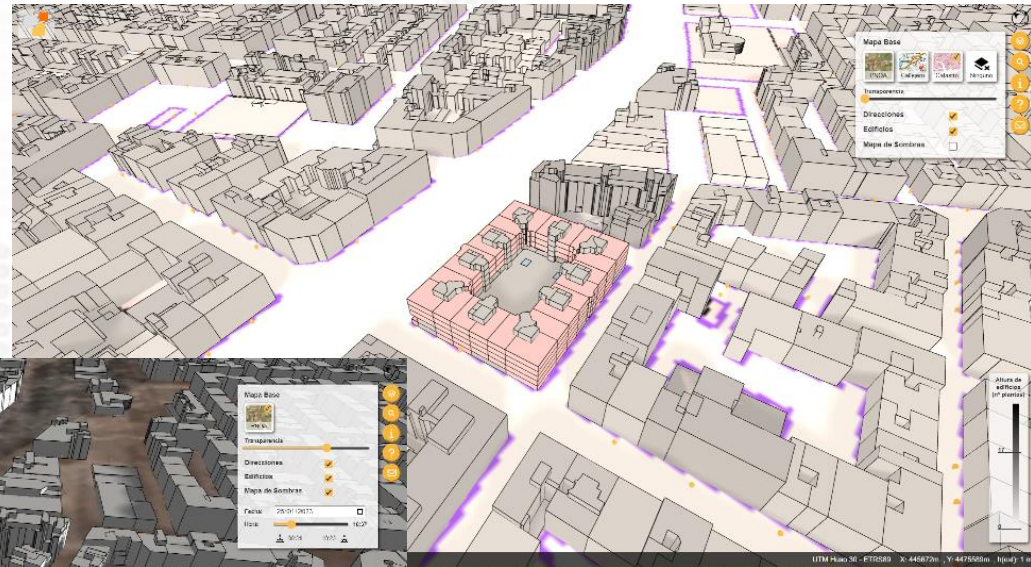
PNOA Callejero Catastro Ninguno

Transparencia

Direcciones

Edificios

Mapa de Sombras



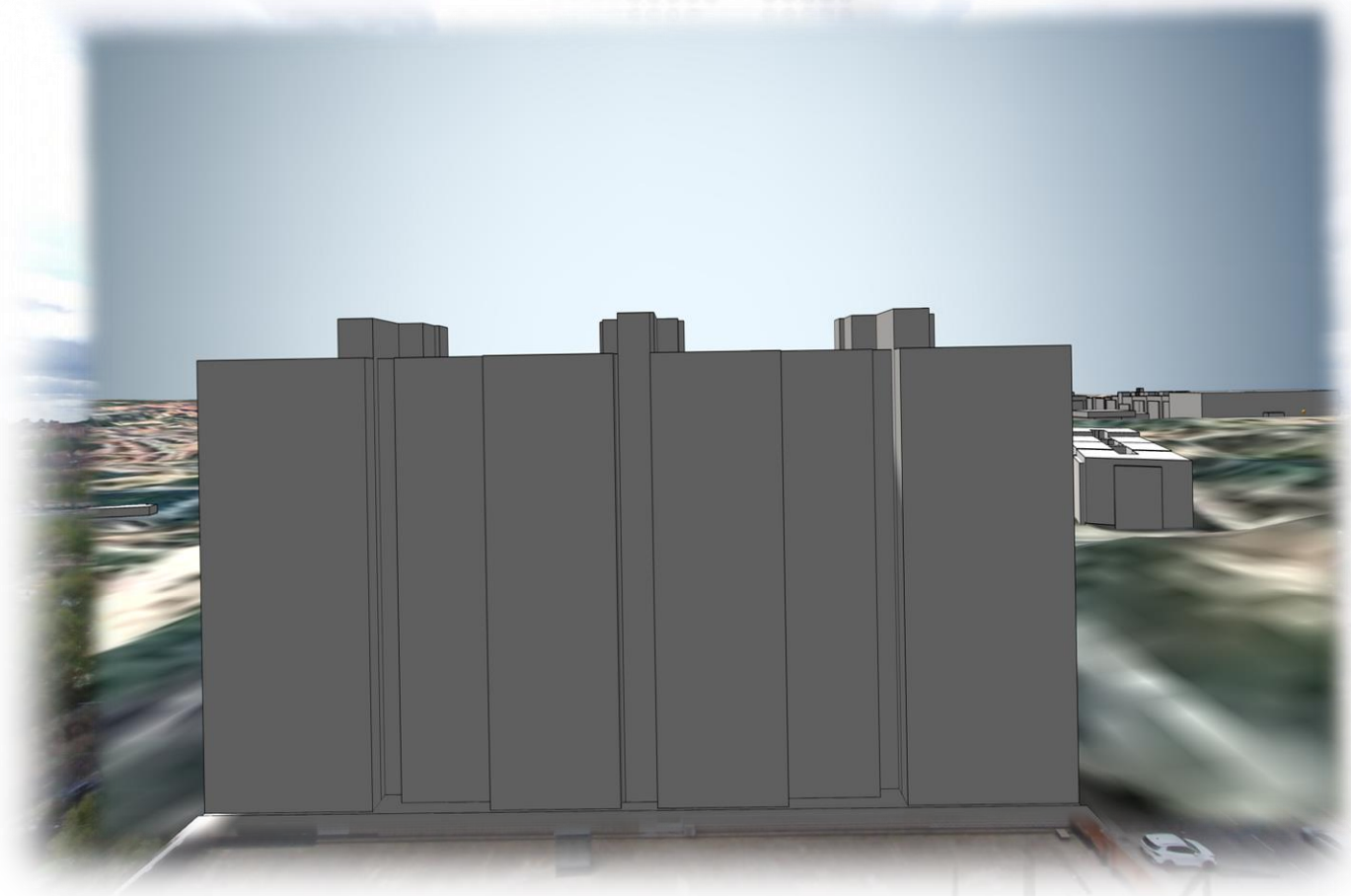
# 3D Cadastral Viewer

U  
23

CATASTRO  
MADRID | 2023

Latest feature:

**View point**  
from  
the unit.



GOBIERNO  
DE ESPAÑA

MINISTERIO  
DE HACIENDA  
Y FUNCIÓN PÚBLICA

SECRETARÍA DE ESTADO  
DE HACIENDA

DIRECCIÓN GENERAL  
DEL CATASTRO





# High value datasets



Most cadastral information is included under the Implementing Regulation (EU) 2023/138 of 21 December laying down a list of specific high-value datasets and the arrangements for their publication and re-use.

- Buildings
- Cadastral parcels
- Addresses

20.1.2023

EN

Official Journal of the European Union

L 19/43

## COMMISSION IMPLEMENTING REGULATION (EU) 2023/138

of 21 December 2022

laying down a list of specific high-value datasets and the arrangements for their publication and re-use

(Text with EEA relevance)

THE EUROPEAN COMMISSION,

Having regard to the Treaty on the Functioning of the European Union,

Having regard to Directive (EU) 2019/1024 of the European Parliament and of the Council of 20 June 2019 on open data and the re-use of public sector information <sup>(1)</sup>, and in particular Article 14(1) thereof,

Whereas:

- (1) It transpires from Directive (EU) 2019/1024 that an EU-wide list of datasets with a particular potential to generate socio-economic benefits and with harmonised re-use conditions is a significant enabler of cross-border data applications and services.



MINISTERIO  
DE HACIENDA  
Y FUNCIÓN PÚBLICA

SECRETARÍA DE ESTADO  
DE HACIENDA

DIRECCIÓN GENERAL  
DEL CATASTRO



# High value datasets

The new Cadastre 3D viewer is a fantastic way to make easier the exploration of the information by citizens.

But do not allow download information to more technical users.

GeoE3 project help to cover this part.



The platform simplify the discovery of relevant data for the uses cases and improve access to them through new API standard.

Buildings3D

## GeoE3 OAPIF Buildings 3D

Experimental service for cross-border provision of 3D buildings

geospatial ecosystem cross-border building

Terms of service <https://creativecommons.org/licenses/by/4.0>  
License CC-BY 4.0 license

### Collections

View the collections in this service

### Processes

View the processes in this service

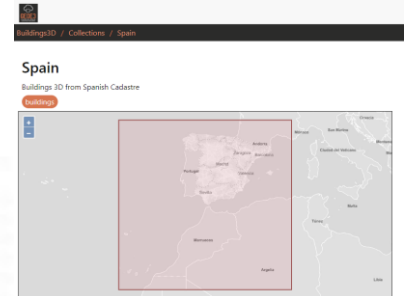
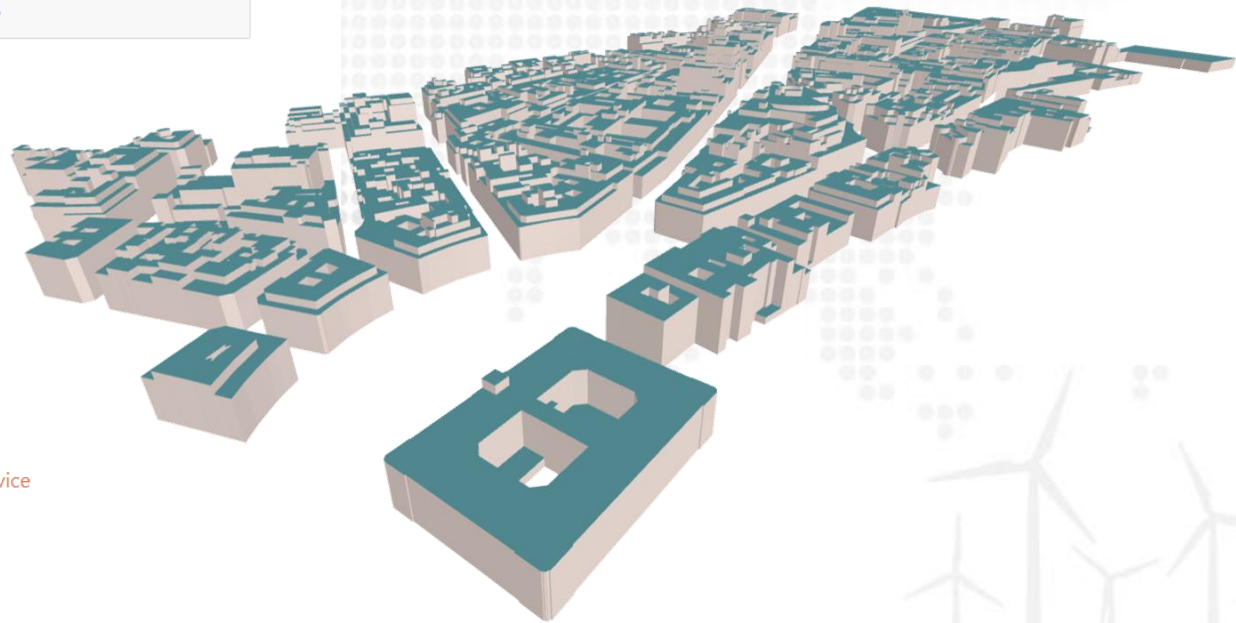
### API Definition

Documentation

OpenAPI Document

### Conformance

View the conformance classes of this service



## GeoE3 goals:

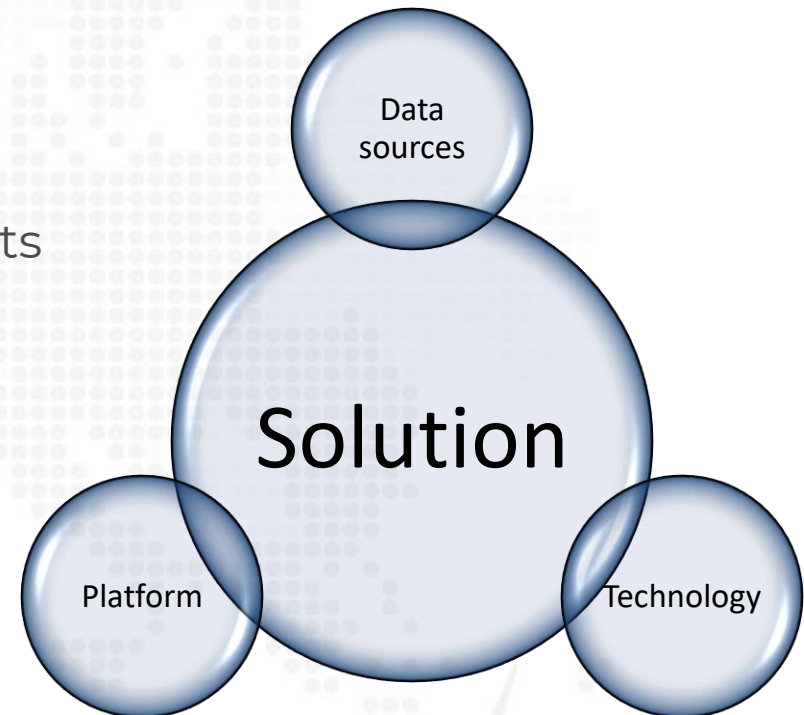
- Better access and interoperability of Geospatial data /other data.
- Dynamic harmonisation of geospatial data based on use cases and new APIs.
- Build an ecosystem based on national platforms.



Implementation of the project is in line with the principles of the European Directive 2019/1024 on open data and re-use of public sector information and its implementing regulation.

This kind of platform allows...

- sharing data,
- integration of different datasets,
- integration of datasets from different geographic areas,
- new applications,
- solutions for day to day problems,
- facilitate decision making,
- development of policy planning,
- ...



First step in the way to data spaces.

# Conclusions



3D data is more necessary day by day and has to be accesible to be useful.

The use of new standards and ways of sharing increases the oportunities to make use of the data.

There is still many things to do and many ways to improve...

3d for rural areas, more detailed models, 3d certifications for real state, ...



MINISTERIO DE HACIENDA Y FUNCIÓN PÚBLICA

SECRETARÍA DE ESTADO DE HACIENDA

DIRECCIÓN GENERAL DEL CATASTRO



# Thanks!

*Javier Luque*

[javier.luque@catastro.hacienda.gob.es](mailto:javier.luque@catastro.hacienda.gob.es)

*General Directorate of the Cadastre of Spain*

# U 23

PRESIDENCIA ESPAÑOLA  
CONSEJO DE LA UNIÓN EUROPEA



MINISTERIO  
DE HACIENDA  
Y FUNCIÓN PÚBLICA

SECRETARÍA DE ESTADO  
DE HACIENDA

DIRECCIÓN GENERAL  
DEL CATASTRO



# U 23

PRESIDENCIA ESPAÑOLA  
CONSEJO DE LA UNIÓN EUROPEA



MINISTERIO  
DE HACIENDA  
Y FUNCIÓN PÚBLICA

SECRETARÍA DE ESTADO  
DE HACIENDA

DIRECCIÓN GENERAL  
DEL CATASTRO

