

Contributing to the new European baseline for monitoring Land Cover and Land Use

“To meet end user requirements regarding data content and quality, Copernicus Services need access to open, up-to-date, and harmonised geospatial information across Europe. Data produced by National Mapping, Cadastral and Land Registration Authorities, the members of EuroGeographics, is therefore key to its success.

Typically, geospatial data is relevant for all the different services, but we have identified three key services which require geospatial data: the Copernicus emergency service and its rapid mapping, and risk and recovery mapping; the Copernicus land monitoring service; and the Copernicus Security Service which supports, inter alia, the EU External Action Service.

By working closely together, we can improve the use of authoritative data and services by Copernicus and ensure National Mapping, Cadastral and Land Registration Authorities are recognised for their essential contributions.”

Jose Miguel Rubio Iglesias
Geospatial Data Management Expert
European Environment Agency (EEA)

Introduction

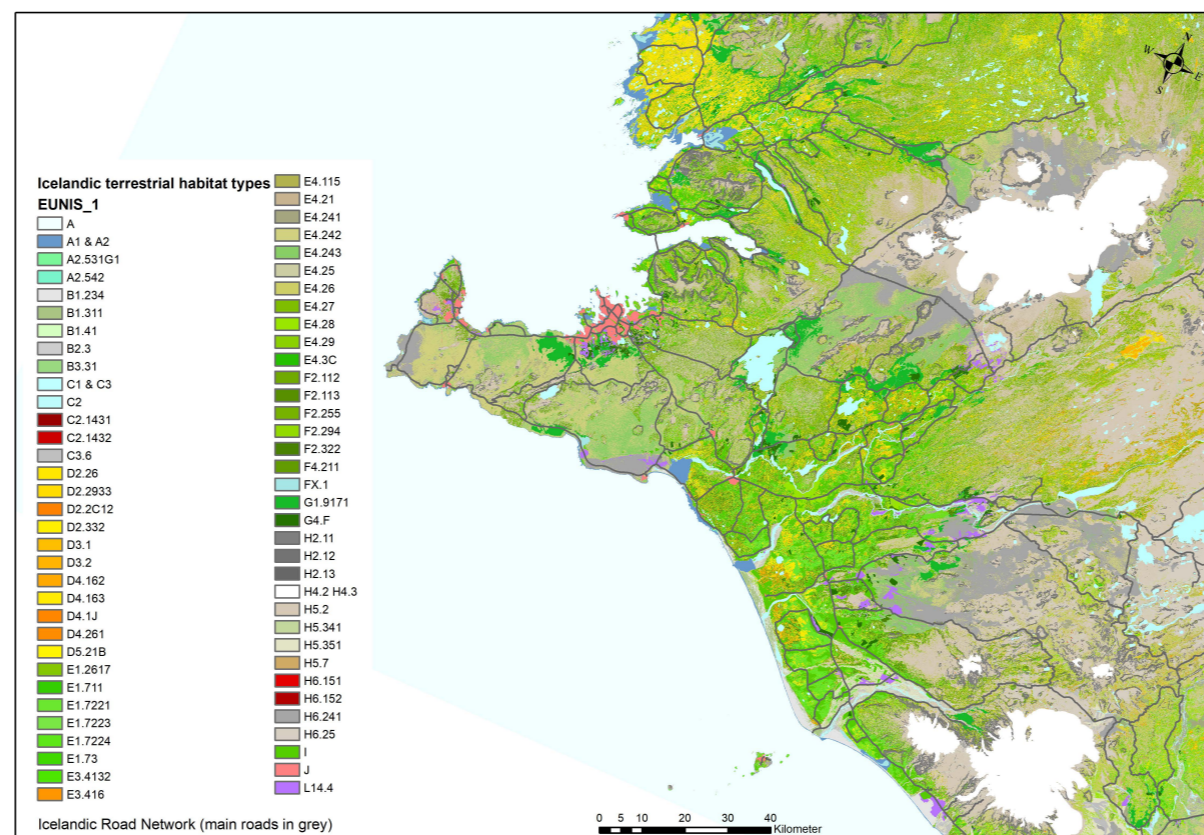
As one of the Entrusted Entities implementing the Copernicus Land Monitoring Service (CLMS), the European Environment Agency (EEA) is developing the CLC+ Suite of products.

Authoritative data from National Mapping, Cadastral and Land Registration Authorities is important input to the CLC+ Backbone (the geospatial component of the CLC+ Suite of products) to complement the production and updating of satellite-data derived land cover data.

This will be essential for the derived CLC Instances, such as the legacy product which is meant to provide continuity to the CLC series aiming to provide land use data.

Challenge

CLC+ complements and extends the suite of currently existing CLMS products to better align with increasing requirements for European Land Cover/Land Use monitoring and reporting obligations. To ensure accurate results, it is essential that the CLC+ Backbone has access to reliable, consistent, national and pan-European data.



Benefits of providing authoritative data for CLMS

- Simplifies access to and licensing of authoritative data from National Mapping, Cadastral and Land Registration Authorities.
- Contributes to the new European baseline for Land Cover/ Land Use monitoring for the next decade.
- Contributes to production of tailored products (known as CLC+ Instances) to support key EU policy needs through the full policy cycle, as well as specific needs expressed by stakeholders in the Member States.
- Contributes to a key element for monitoring the European Green Deal.
- Contributes to monitoring, reporting and validation to support implementation of the Regulation on the Inclusion of Greenhouse Gas Emissions, and removals from Land Use, Land Use Change and Forestry (LULUCF).
- Demonstrates value of cooperation between EEA and European National Mapping, Cadastral and Land Registration Authorities.

Solution

“We are delighted to provide data for CLC+ which plays a vital role in supporting key EU policy needs, as well as specific requirements for stakeholders in EU Member States. As a member of EuroGeographics, we fully support the partnership with the EEA to further explore solutions for providing full, free, and open access to geospatial data for the Copernicus programme.”

Gunnar Haukur Kristinsson

Director General, National Land Survey, Iceland

Official providers of geospatial data are contributing to the CLC+ Backbone. For example, National Land Survey of Iceland is providing access to geospatial data consisting of land cover and land use data, contour lines and height points, structures, boundaries, transportation, hydrology, coastal line, surface and place names. It is constantly being updated using a variety of sources and data, such as GNSS (Global Navigation Satellite System) tracking for roads, aerial photographs, satellite images or data from agencies and municipalities. The database, known as IS 50V, also offers a height model in the download service.

To simplify access to national datasets across Europe, the EEA and EuroGeographics, which represents Europe’s National Mapping, Cadastral and Land Registry Authorities, are creating, maintaining, and implementing a Framework Licence agreement for official geospatial data. The partnership is also exploring solutions for providing full, free, and open access to geospatial data for the Copernicus programme, including the geospatial data component of the CLC+ Suite of products, the CLC+ Backbone.



MORE INFORMATION
<https://land.copernicus.eu/pan-european/clc-plus>



The CLC+ Backbone is the geospatial data component of the CLC+ Suite of products.

