



EuroGeographics Update

Patricia Sokacova
Membership & Communication Manager

Joint PCC & EuroGeographics CLRKEN
Conference and Plenary 17-19 June 2024



CONNECTING YOU TO MAPS, GEOSPATIAL AND LAND INFORMATION FOR EUROPE



#MAPSFOREUROPE

60+  **members** from the whole of geographical Europe

EUROGEOGRAPHICS ACTIVITIES

Well-established network for sharing knowledge, expertise and access to data



Sharing experiences and best practice



Representing our members interests



Fostering use and re-use of public sector geo-information

MAPS, CADASTRE, AND MORE

Our members provide data to help protect people, the planet and so much more



Environmental monitoring & management



Real-time data for pandemic response



Smarter, sustainable agriculture



Cleaner, safer, intelligent transport



Emergency responses



Aerial survey

TRUST & RELIABILITY

Our members empower society with trusted geospatial services



Trusted daily everywhere for secure ownership transactions, diligent policy elaboration and monitoring



Relied on by European institutions and UN, governments, businesses and citizens



Registered on the EU Transparency Register and bound by its code of conduct



Enabling access
to members' data
and expertise

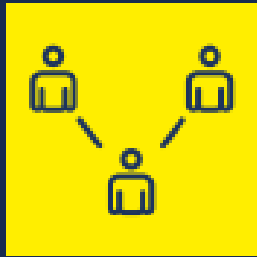


Representing
members'
interests



Providing opportunities
for knowledge
exchange

Knowledge Exchange



Maintaining an
extensive knowledge
exchange network



Delivering webinars
that enable maximum
participation by
members



Organising a
comprehensive
calendar of events,
including with partners

Knowledge Exchange



Maintaining an extensive knowledge exchange network



CLRKEN
Cadastre and Land Registry

The purpose of this KEN is to help meet user needs for cadastral information at both national and European level.



INSPIRE KEN

This KEN enables members to discuss and share their experiences of implementing the INSPIRE Directive.



PolKEN
Policy

This KEN tracks, evaluates and constructively participates in the development of relevant European initiatives, programmes and policies.



QKEN
Quality

This group focuses on data quality and quality management issues, produces benchmarking reports and tracks international standards.



TDKEN

The Positioning Forum (previously POS KEN) provides a forum for discussion between organisations which each represent a different GNSS market segment.

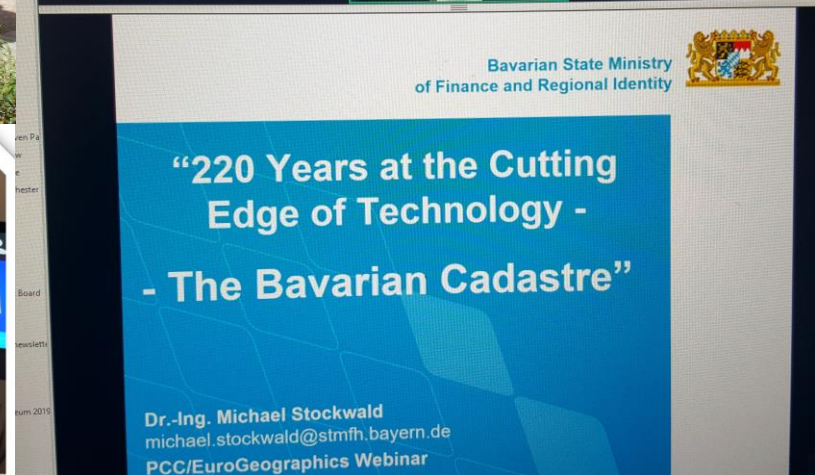
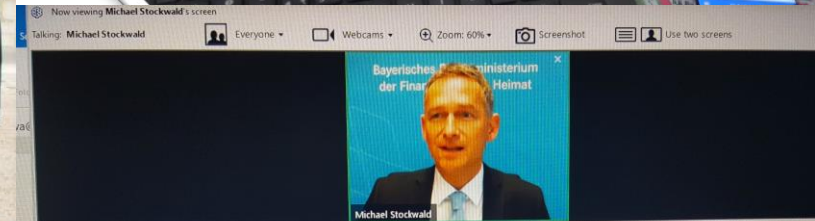
Knowledge Exchange



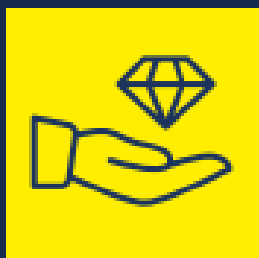
Organising a comprehensive calendar of events, including with partners



Delivering webinars that enable maximum participation by members



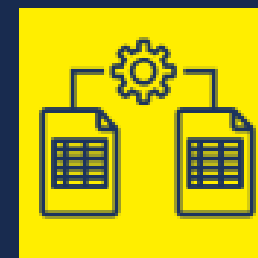
Representation



Demonstrating value
of trusted geospatial
services from official
national sources



Establishing
partnerships to support
the public good



Promoting integration
of authoritative data
within the European and
International systems

European Representation



Global Representation



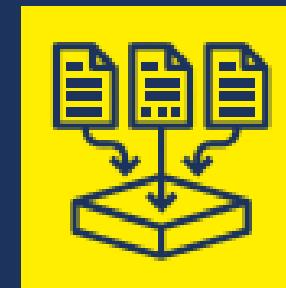
Data



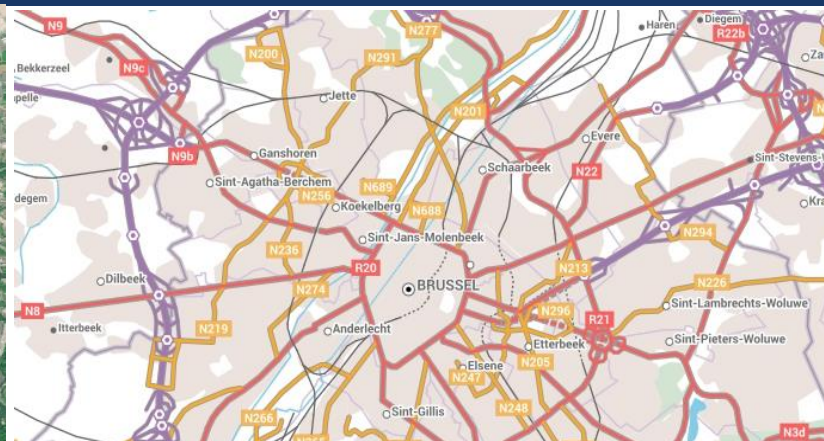
Connecting users
to official national
geospatial information



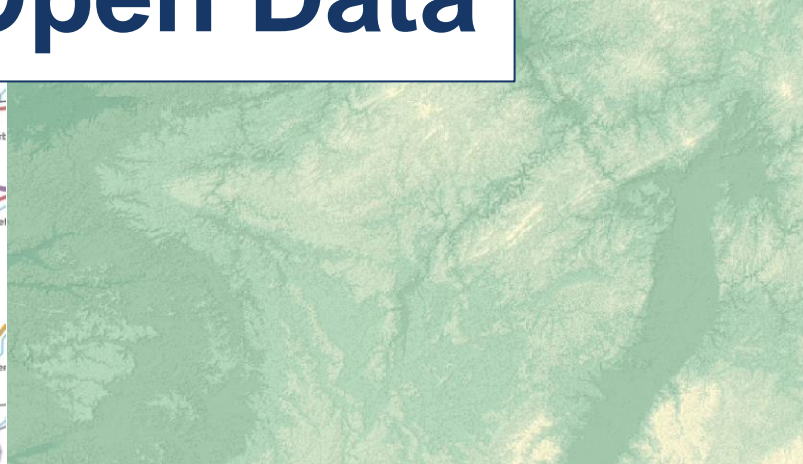
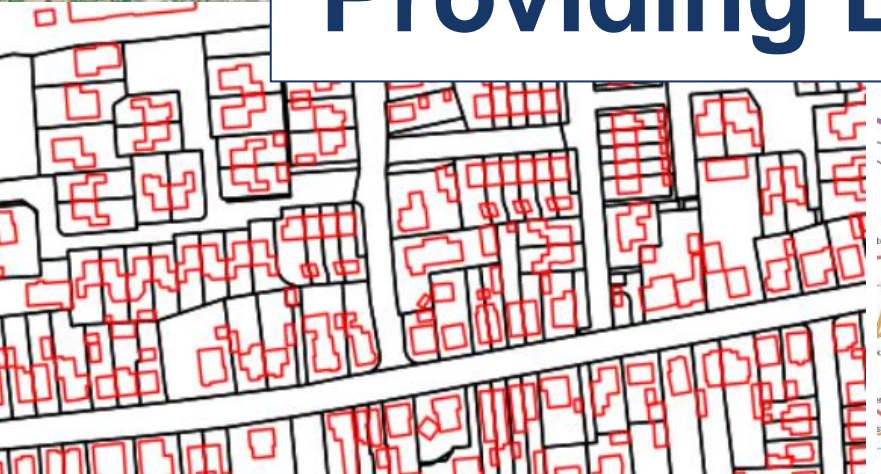
Facilitating access to
high-value geospatial
datasets



Providing
expertise in data
production

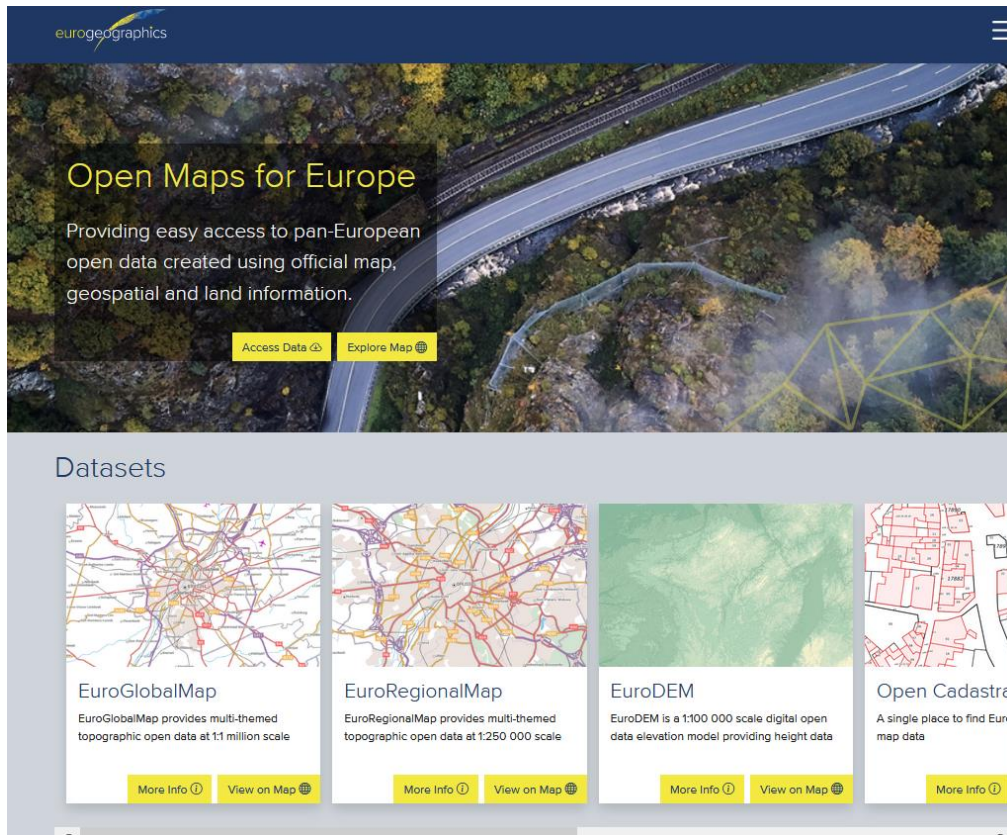


Providing Easy Access to Open Data



Co-financed by the European Union
Connecting Europe Facility

Enhancement of the interface

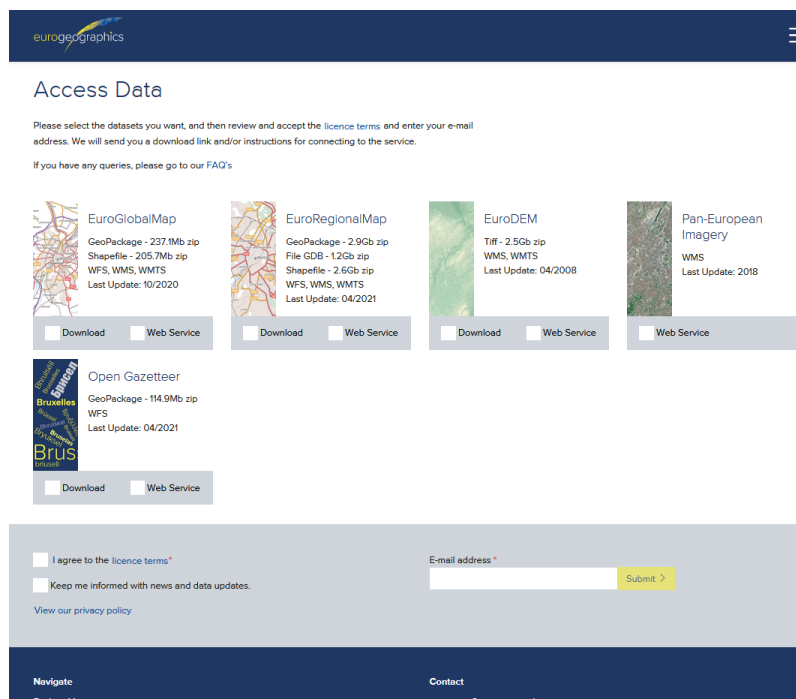


Open Maps for Europe
Providing easy access to pan-European open data created using official map, geospatial and land information.

[Access Data](#) [Explore Map](#)

Datasets

- EuroGlobalMap**
EuroGlobalMap provides multi-themed topographic open data at 1:1 million scale
- EuroRegionalMap**
EuroRegionalMap provides multi-themed topographic open data at 1:250 000 scale
- EuroDEM**
EuroDEM is a 1:100 000 scale digital open data elevation model providing height data
- Open Cadastral**
A single place to find Euro map data



Access Data

Please select the datasets you want, and then review and accept the [licence terms](#) and enter your e-mail address. We will send you a download link and/or instructions for connecting to the service.

If you have any queries, please go to our [FAQ's](#)

- EuroGlobalMap**
GeoPackage - 237.Mb zip
Shapefile - 205.7Mb zip
WFS, WMS, WMTS
Last Update: 10/2020
- EuroRegionalMap**
GeoPackage - 2.9Gb zip
File GDB - 1.2Gb zip
Shapefile - 2.6Gb zip
WFS, WMS, WMTS
Last Update: 04/2021
- EuroDEM**
Tiff - 2.5Gb zip
WMS, WMTS
Last Update: 04/2008
- Pan-European Imagery**
WMS
Last Update: 2018
- Open Gazetteer**
GeoPackage - 114.9Mb zip
WFS
Last Update: 04/2021

Download Web Service

I agree to the [licence terms](#)*

Keep me informed with news and data updates.

E-mail address* [Submit >](#)

[View our privacy policy](#)

Navigate
[Explore Map](#)

Contact
contact@eurogeographics.org



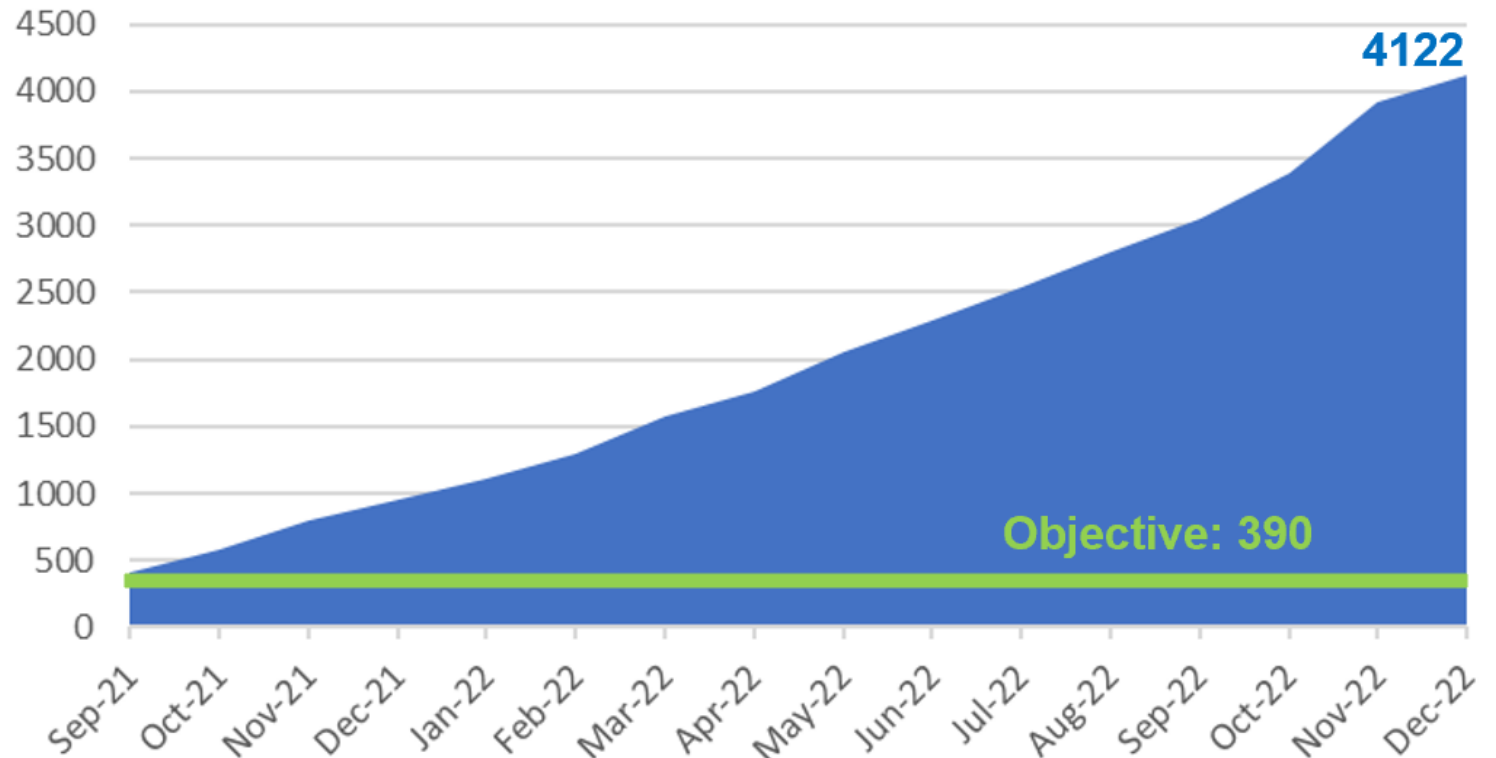
<https://www.mapsforeurope.org/>



A Great Success!

- > 4000 registered users
- 4700 dataset downloads
- 6 million web service transactions

Total Number of OME Interface Users



Co-financed by the European Union
Connecting Europe Facility

The Open Cadastral Map

HVD: Cadastral Parcels, Buildings, Addresses and Administrative Units

Sustain: Currently data from 6 countries provided through the OME interface

Extend: 9 additional countries

Enhance: New functionalities



User requirements



Large scale



Key Themes



Life-cycle
management



Harmonised &
edge-matched

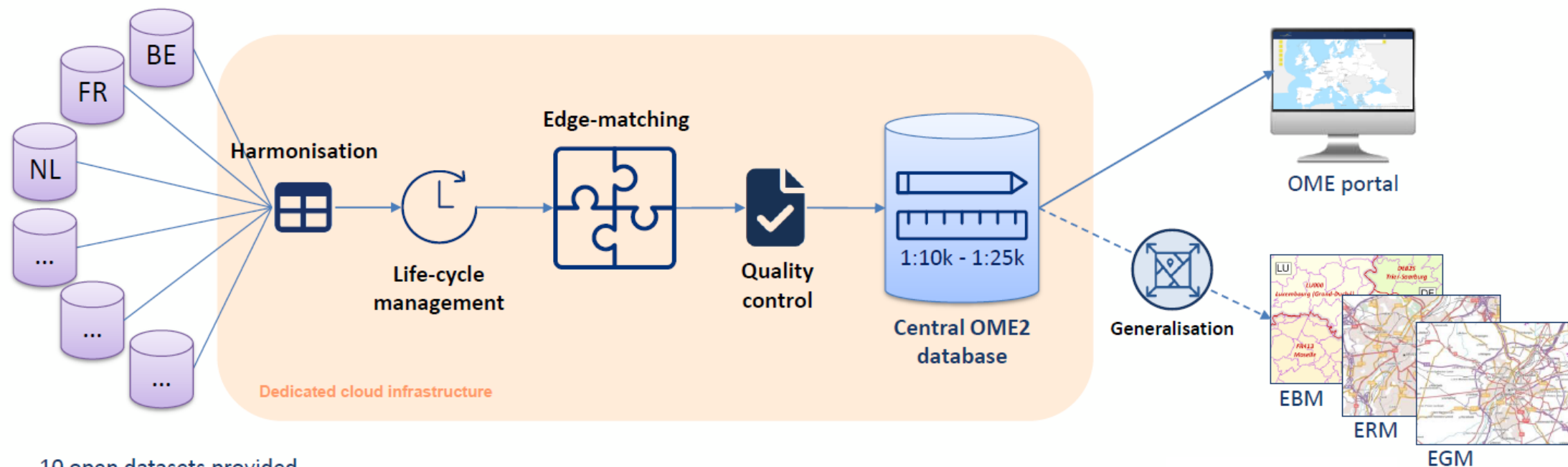


Authoritative



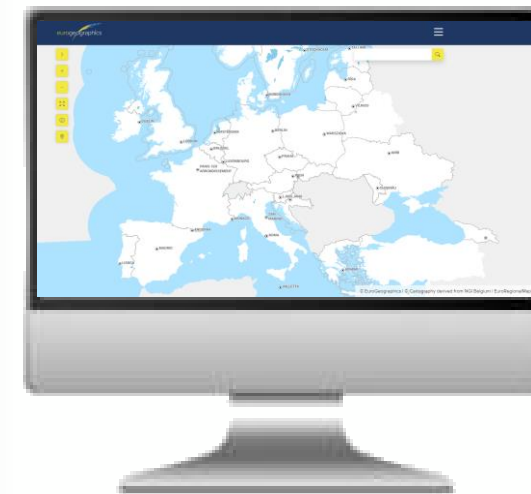
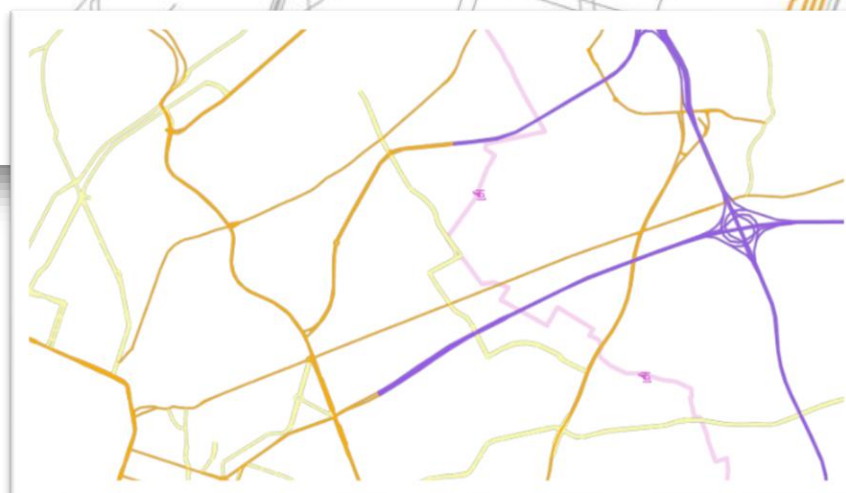
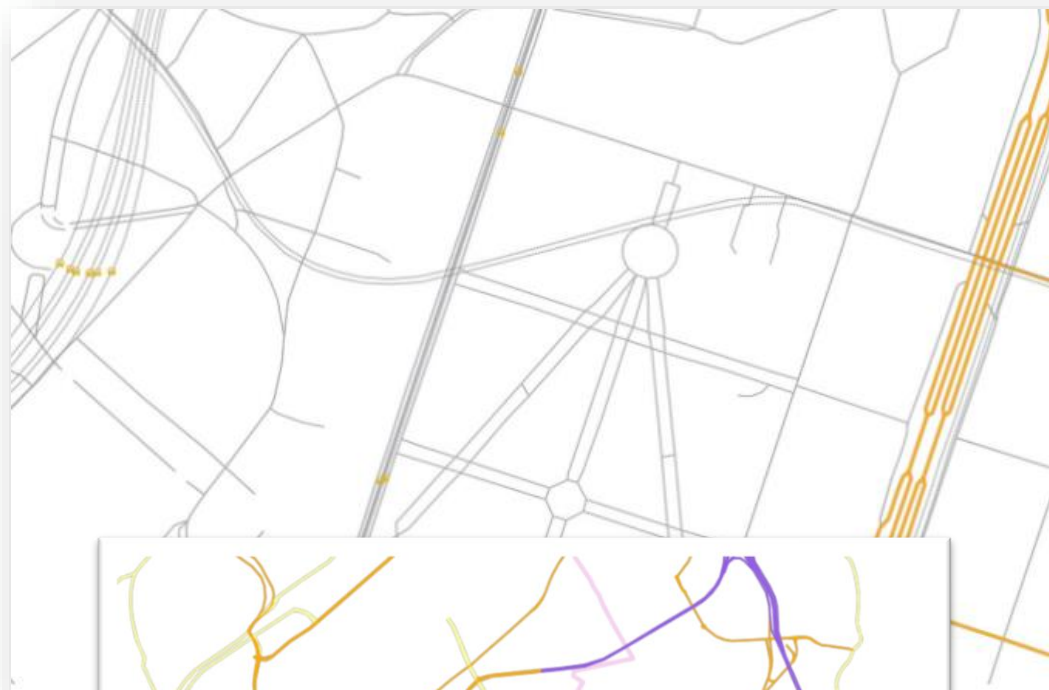
Geographical
Europe
coverage

New production process for Large Scale Data



10 open datasets provided
by national producers with
mapping tables

Prototype



OME2 interface
www.mapsforeurope.org

Communications

Connecting you to
maps, geospatial and land information
for Europe



VISIT OUR WEBSITE
<https://eurogeographics.org>

eurogeographics

**Members'
Newsletter**



eurogeographics

Messenger

**Annual Review
2023**



EuroGeographics showcases
value of official national
geospatial data in Copernicus
Services



Thank you very much for your attention!

