



State Land Service  
Republic of Latvia

# INTRODUCTION TO STATE LAND SERVICE OF LATVIA AND ITS RESPONSIBILITIES

**Vents Priedoliņš**  
Cadastre development manager

Riga, 2024

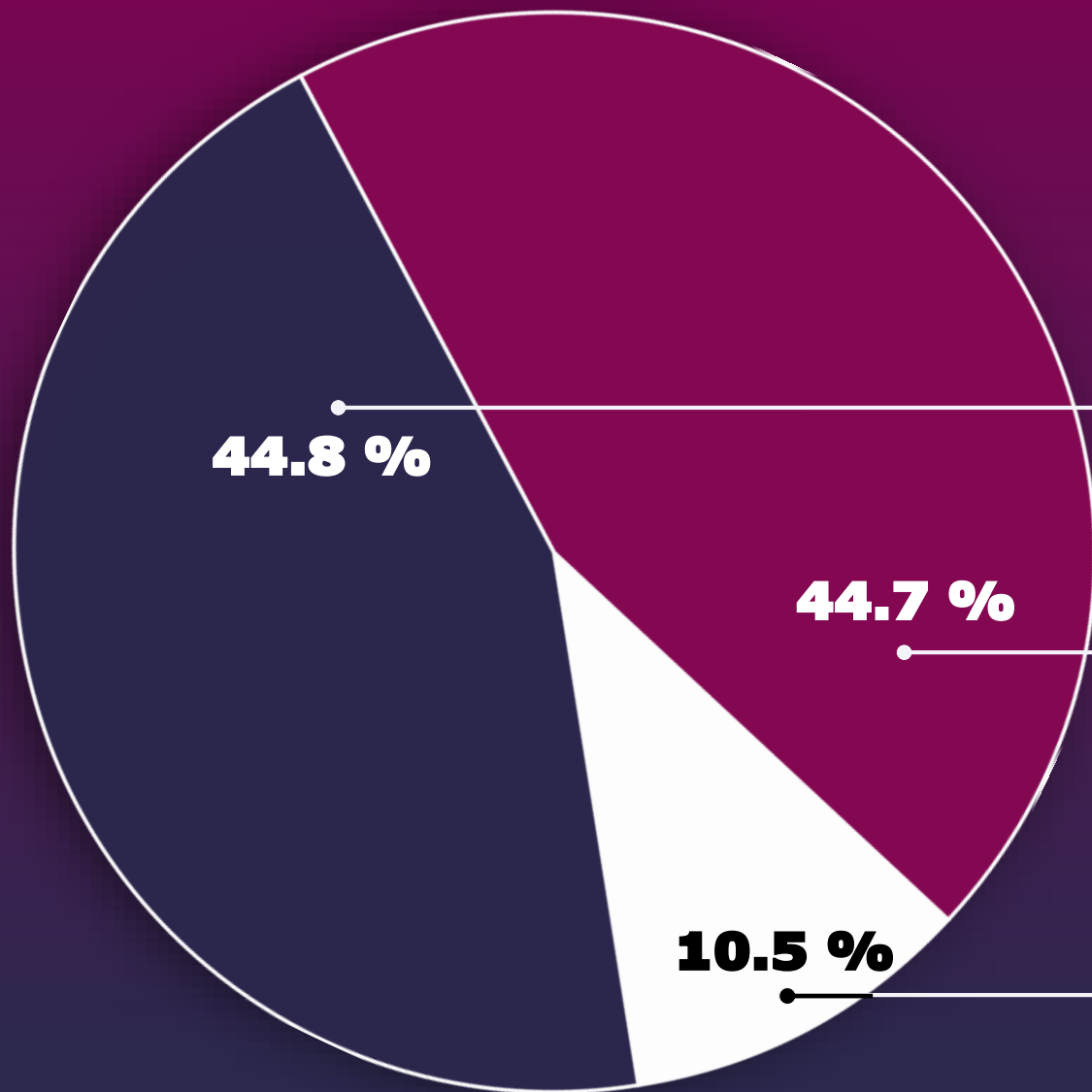
**641** Employees in  
a whole country

**1** Central  
administration

**5** Regional  
administrations

**14** Customer  
service  
centres



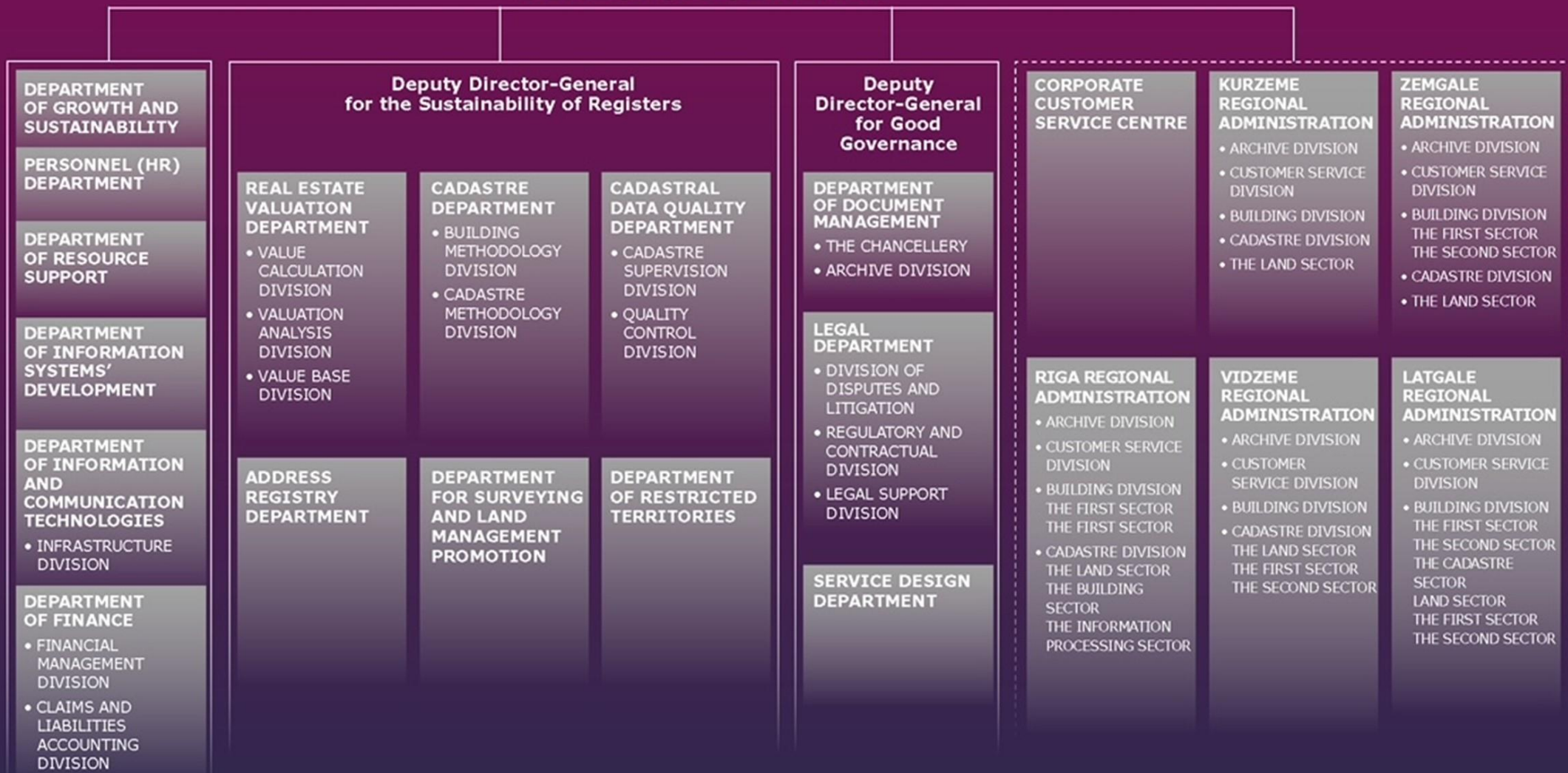


## BUDGET 2023

**19.75 mil. €**

- ❖ General State Budget Grant  
**8.84 mil. € | 44,8 %**
- ❖ Revenue from paid services' income and other self revenue  
**8.83 mil. € | 44.7%**
- ❖ *Implementation of European Regional Development Fund (ERDF) projects and actions 2014-2020*  
**2.08 mil. € | 10.5%**

# DIRECTOR GENERAL





# OPERATIONAL STRATEGY

TARGET MAP  
(2022–2026)

## Mission

Strategic partner for smart territory management in Latvia

## Vision

Simple – about land and buildings

## Values

- ❖ Professionalism
- ❖ Cooperation
- ❖ Responsibility
- ❖ Development

## Priority directions

- ❖ Smart data and process management.
- ❖ Services that are easy for everyone to use, easy to understand and focused on the public interest.
- ❖ A solution-focused cooperation partner.
- ❖ A motivating and engaging work environment – a place to grow into an expert.

# Areas of responsibility

**Cadastre**

❖ **Real estate  
market  
database**

**State Address  
Registry**

**Information system  
of restricted  
(encumbered)  
territories**

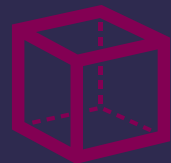
**Central database  
for high-detail  
topographic  
information**

**Cadastral  
valuation of  
real estate**

**Cadastral  
surveying of  
buildings and  
groups of  
premises**

**Land reform**

# Briefly on Cadastre 2023



Total objects in the  
Cadastre:

Real estate

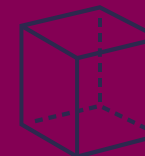
**1 495 355**

Land parcels

**1 041 551**

Buildings

**1 553 748**



Objects registered  
in the Cadastre in  
2023

Real estate

**17 822**

Land parcels

**8937**

Buildings

**22 053**

# Cadastral textual data

## On land

- Real estate types of use
- Restrictions (encumbrances)
- Types of land use and distribution by area
- Total area



## On buildings

- Main type of use
- Depreciation and materials of constructive elements
- Distribution of areas (residential groups of premises/ non-residential groups of premises)



## On groups of premises

- Type of use
- Name of the group of premises
- Area

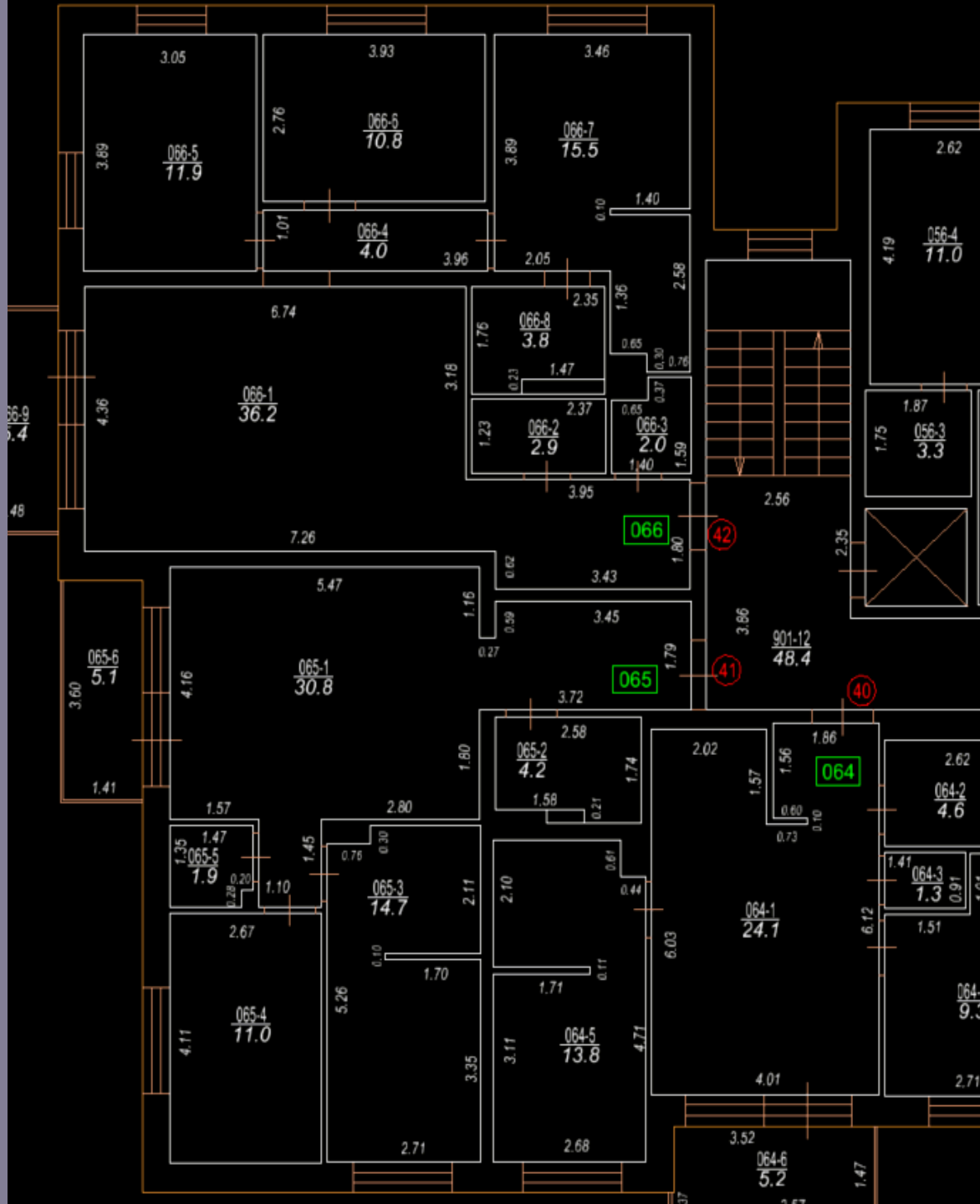


## Cadastral value of each object

- Land parcels,
- Buildings,
- Groups of premises (apartments)
- Real estate.







## Cadastre spatial data

- ❖ Land parcels, their boundaries
- ❖ Building footprints
- ❖ Restrictions (Encumbrances) – servitudes
- ❖ Floor plans. Digitised since 2007

# Which data can be found in the State Address Registry?



Administrative territories and territorial units



Villages, small villages



Streets and their spatial location



Buildings, building land and location thereof



Groups of premises (textual data)



Historical addresses



National and municipal roads, and their spatial location



Various attribute information (ATVK, postcode)



Planned addresses

# Data in the Information system of restricted territories

## Restricted territories and their boundaries

- ❖ Protection zones
- ❖ Specially protected nature areas
- ❖ Micro-reserves and their buffer zones
- ❖ Tow area
- ❖ Areas of building restrictions, etc.

## Restricted objects and their boundaries

- ❖ Geodetic survey points
- ❖ Electrical and electronic communications networks
- ❖ Water intake sites
- ❖ National motorways, railways
- ❖ Objects of national defence
- ❖ Landfills and dumps etc.

# Data in the Central database for high-detail topographic information

❖ on-ground natural objects

❖ on-ground man made objects

❖ underground engineer-communications

- ❖ Topographic information is stored as separate files
- ❖ Each file corresponds to a **1:1000 scale map sheet** of the 1993 topographic map system, divided by administrative boundaries



*The resource files are available on the State Land Service website*



# 🔍 kadastrs.lv

The screenshot displays the 'Mans konts' (My account) page on the kadastrs.lv website. The page features a green header with the logo and navigation links. A left sidebar contains a menu with items like 'Kadastra informācijas sistēma', 'Valsts adrešu reģistrs', 'Kartes', 'Elektroniskie pakalpojumi', 'Mans portāls', 'Veiktās darbības', 'Mans konts', 'Maksājumu transakcijas', 'Mani dati', and 'Palīdzība'. The main content area is titled 'Mans konts' and contains two primary sections: 'E-pakalpojumu vēsture' (E-services history) and 'Mani pasūtījumi VZD' (My VZD orders). Each section includes a brief description of the service and a 'Tālāk' (Next) button. The footer contains copyright information, logos for ERAF and the European Union, and a list of partners.



*Conveniently  
receive  
documents  
ordered  
electronically!*

❖ Textual  
and  
spatial data

❖ State  
Address  
Registry

❖ Topographic  
data

❖ Real estate  
cadastral  
values

❖ My account

# Cooperation A key to success

**Regular meetings  
with partners**  
surveyors, private valuers,  
real estate developers,  
municipalities etc.

## Partnership

- ❖ Open data conferences
- ❖ Innovation week events
- ❖ Talking festivals
- ❖ Events, organised by the National Surveyors' Association
- ❖ Various expert discussions organized by SLS.







# Active international cooperation

- ❖ **EuroGeographics**  
*Cadastral and Land Registry Knowledge Exchange Network Core Team management*  
*Quality Knowledge Exchange Network participant*
- ❖ **Permanent Committee on Cadastre in the European Union (PCC)**
- ❖ **International Federation of Surveyors**



# KADIS

## The New Cadastre

### Zemes vienības - Rediģēt

<b>Kadastra apzīmējums</b>	<b>Adrese</b>	<b>Kopplatība, ha</b>	<b>ATVK</b>
01000500115	Buru iela 17, Rīga	0,0776	0001000 Rīga

[Pamatdati](#) [Lietošanas veidi un mērķi](#) [Mērniecība](#) [Apgrūtinājumi](#) [Atzīmes](#) [Dokumenti](#) [Vērtēšana](#) [Zemes vienības daļas un plānotie objekti](#)

<b>Statuss</b>	<b>Īpašuma kadastra numurs</b>	<b>Platība, ha</b>	<b>Grafiskās daļas platība, ha</b>
10 nekustamais īpašums	01000500115	0,0776	0,0776
<b>Administratīvā teritorija</b>	<b>Kadastrālā teritorija</b>	<b>Kadastra grupa</b>	
Rīga	Rīgas pilsētas kadastrālā teritorija	grupa 50 grunts	

#### Paziņojumi no grafiskās daļas

[i](#) ZV graphic info 01000500115 - 0,0776 - Uzmērīta zemes vienība - 01.11.2011

#### Informācija par izcelsmi

[i](#)

#### VVDZ paziņojumi

[i](#)

#### Piezīmes

#### Adrese

Atvērt

Pievienot

Dzēst

# Achievements

## Land parcels and parts of land parcels

- ❖ Registration and updates  
→ 4 processes

## The map

- ❖ Migration of spatial data (cadastral objects)

## The workflow

- ❖ Integrating workflows into the processes of the SLS

## Data distribution network (DDN)

- ❖ Distribution of cadastral data to DDN

## Cadastral values

- ❖ Preparation of data for cadastral valuation of real estate



# **KATE**

## **New technical solution for cadastral map**

- ❖ Five months from idea to result!
- ❖ The technological solution is based on the PostgreSQL PostGIS database.
- ❖ The working environment was created using QGIS v3.34 software.

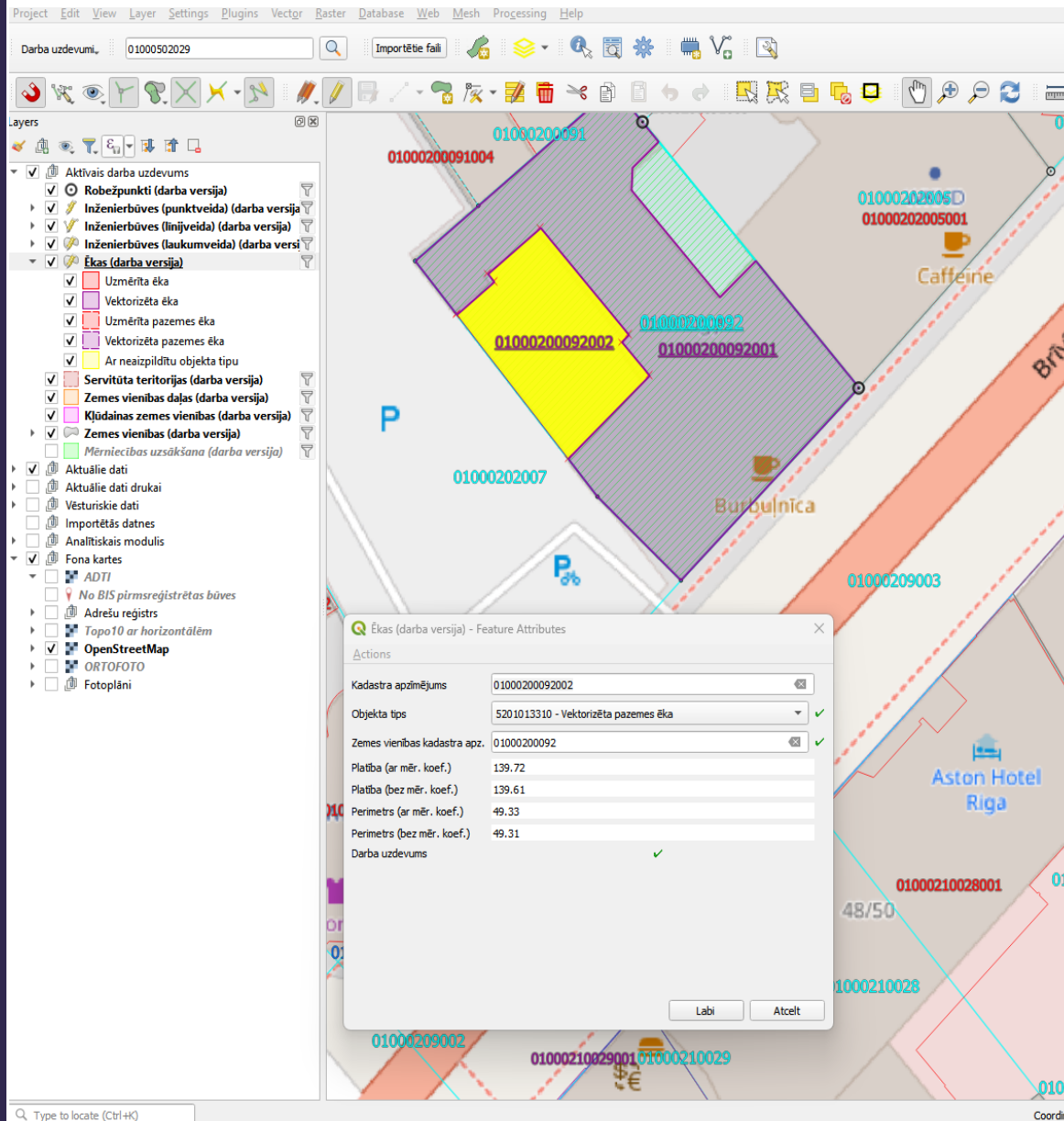


*The previous KRIS GP solution used Bentley MicroStation V8.1 and the platform was based on Oracle database 10 g*



# KATE benefits

- ❖ No paid licences required.
- ❖ Access to the latest technologies.
- ❖ A side benefit – a communication site in the *Webex* environment established where data operators communicate with each other, exchange knowledge and receive immediate support from IT support staff.



# Technical improvements

- ❖ Data specification change.
- ❖ Data storage is now fully centralised.
- ❖ Separation of the working database from the underlying database.
- ❖ More complete validation of topological data.
- ❖ Improved ability to store and view historical data.
- ❖ Several new validations have been developed, both in the database and in the work environment.
- ❖ Various raster and vector backgrounds available in QGIS formats can be added to the working environment.



## Challenge

Incorporation of the Address Registry data and the Restricted Territories' Information System data into the same technical solution as used for the cadastral map.





## ... another challenge

Development of the new online portal for data and services of the SLS.

Stay updated  
by following the news  
of the State Land Service!

---



[www.vzd.gov.lv](http://www.vzd.gov.lv)  
[kadastrs.lv](http://kadastrs.lv)



**Thank You!**

Thank You!

[vents.priedolins@vzd.gov.lv](mailto:vents.priedolins@vzd.gov.lv)