

Cadastral information systems in dispersed cadastre

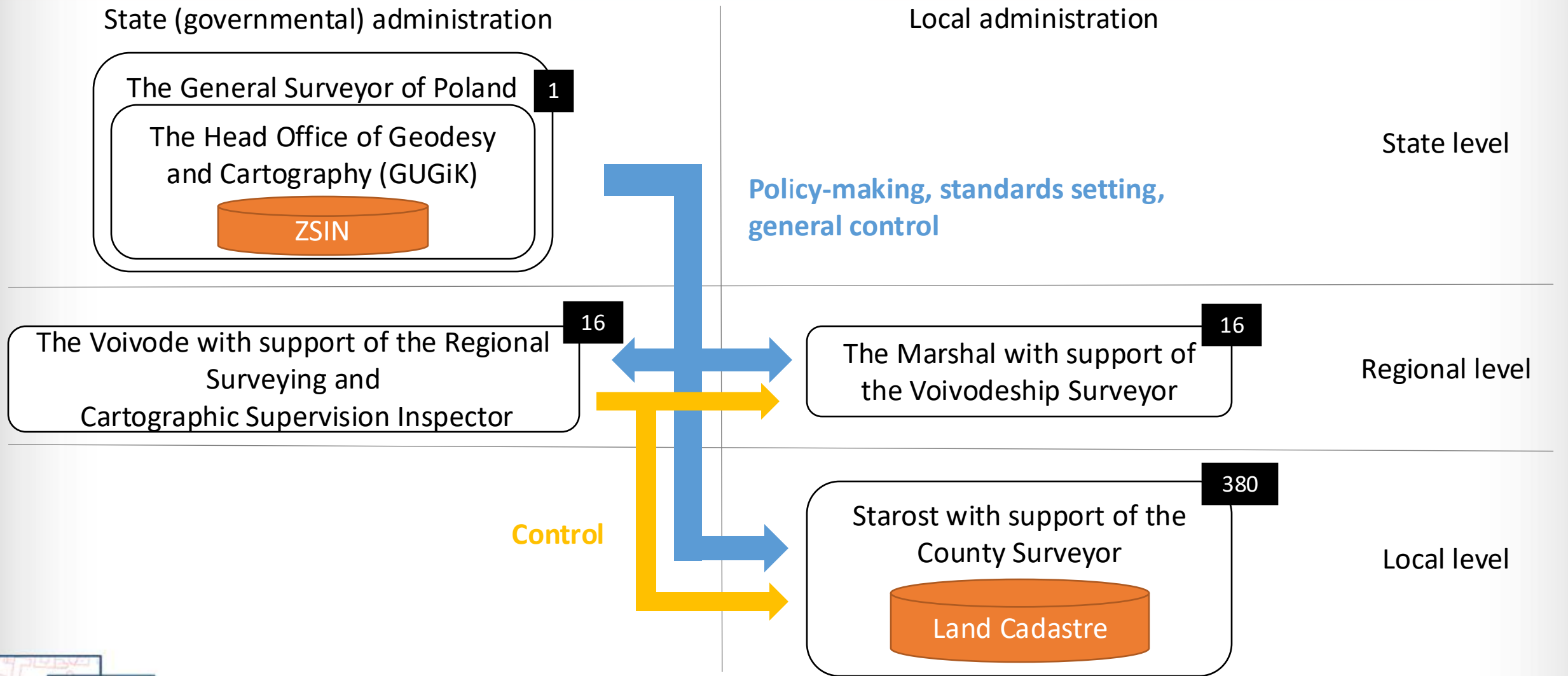


Marcin Grudzień – Director of Real Estate Department
The Head Office of Geodesy and Cartography

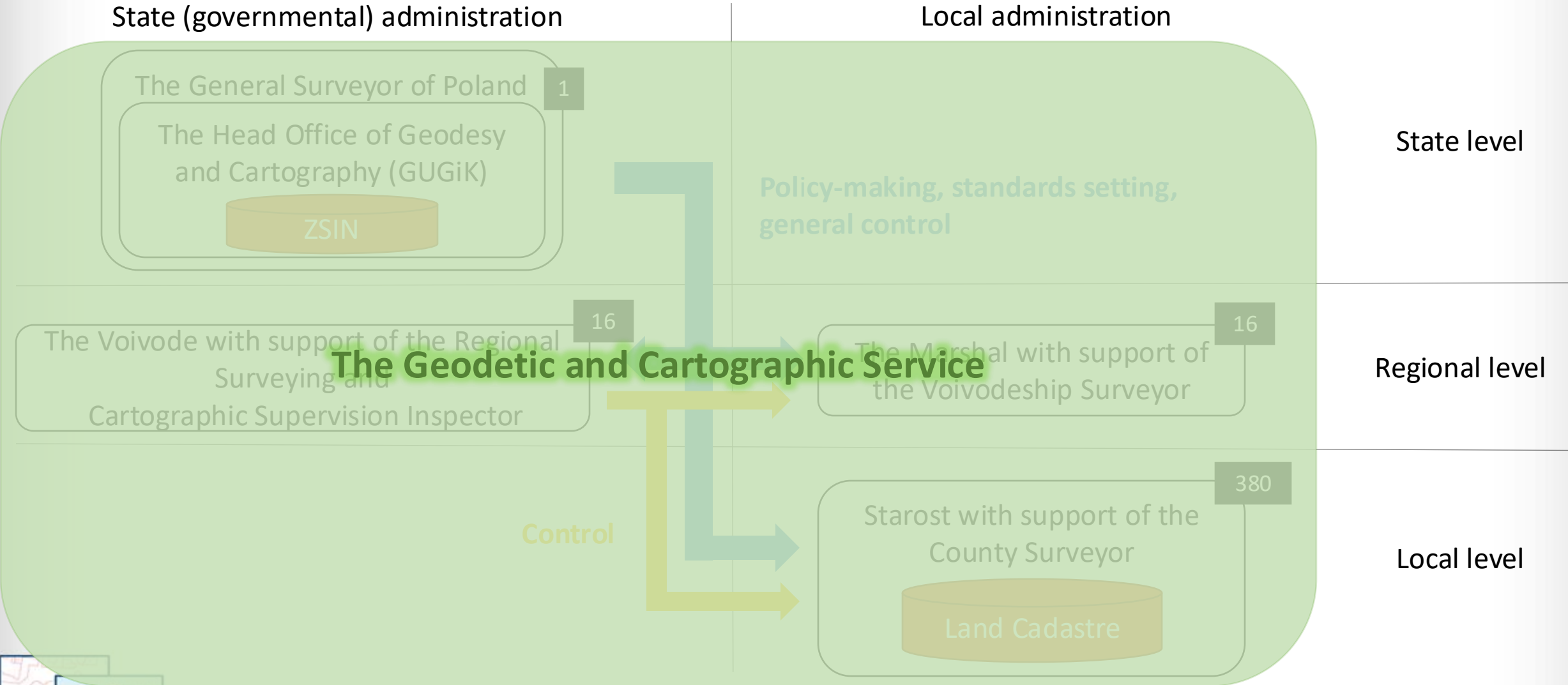
- **Structure of Polish Geodetic and Cartographic Service**
- **Land Register vs Land Cadastre**
- **Cadastre IT Systems in Poland**
 - **Cadastre IT systems in counties**
 - **Integration of services**
 - **ZSIN**
 - **Validators**
- **Polish Presidency**



Structure of the Polish Geodetic and Cartographic Service



Structure of the Polish Geodetic and Cartographic Service



The Geodetic and Cartographic Service



Structure of the Polish Geodetic and Cartographic Service



- ✓ 16 voivodeships
- ✓ 380 counties
- ✓ 385 cadastral databases
 - ✓ 380 in counties
 - ✓ 5 in communes as a result of an agreement with Starost

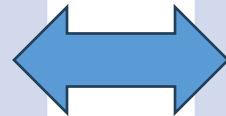


Land Cadastre vs Land Register



Land Cadastre

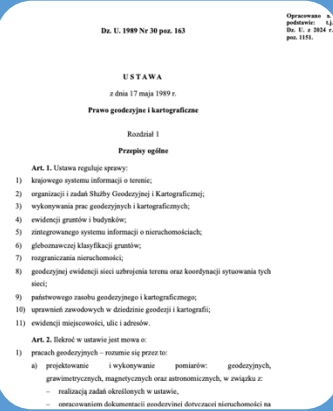
- Managed by the Geodetic and Cartographic Service
- Legally binding regarding spatial extent of ownership rights
- Contains information about parcels, buildings, premises (flats), land use and soil quality (for agriculture land only)
- Contains data about owners



Land Register

- Managed by Ministry of Justice and courts
- Legally binding regarding ownership
- Contains information about real estates (consisting of parcels, buildings and premises), mortgage and limited real rights
- Contains data about owners

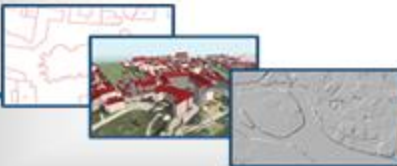
Cadastre Law



Geodetic and Cartographic Law from 17th of May 1989

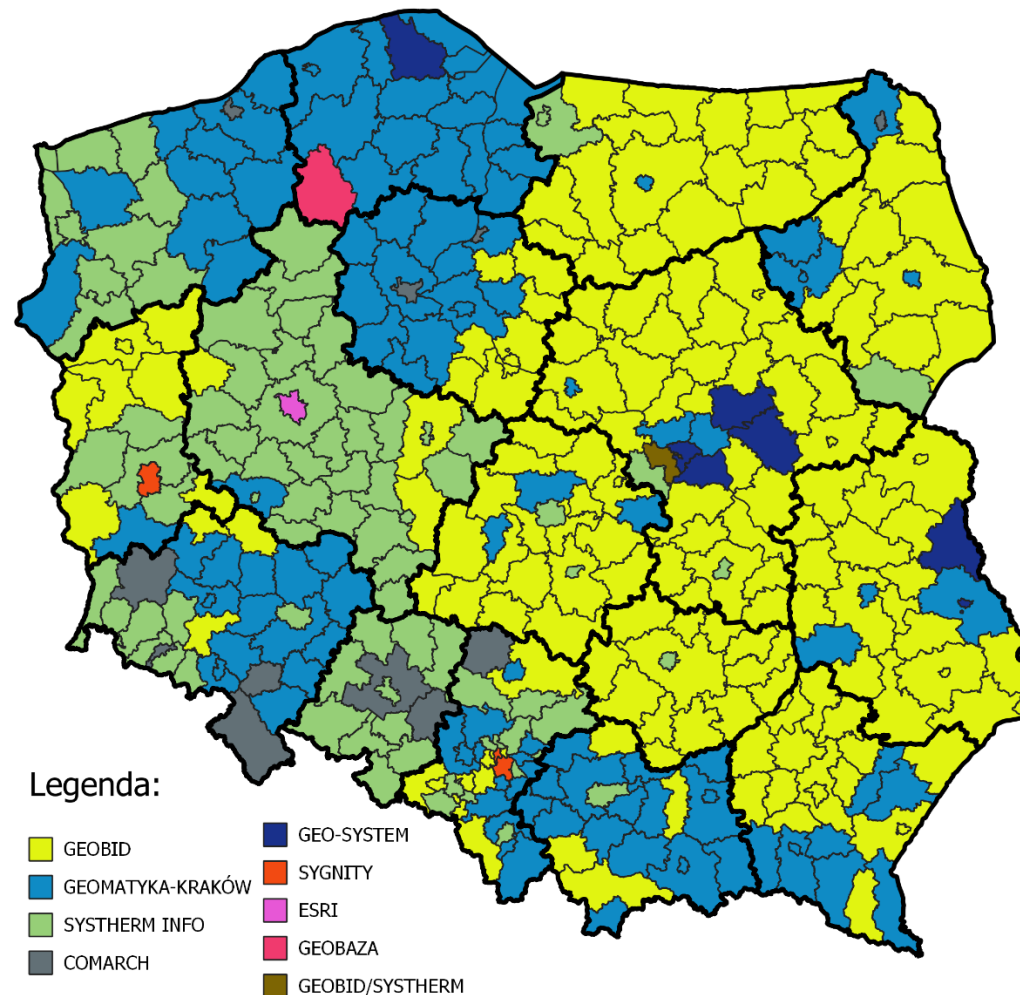


Regulation of Minister of Economic Development and Technology from 27th of July 2021 regarding land cadastre



Geodetic IT systems - producers

Comarch	11
Esri	1
Geobaza	1
Geobid	166
Geobid i Systherm	1
Geomatyka	113
Geo-system	7
Sygnity	3
Systherm	82



IT systems

Typically IT systems in counties manage following databases:

Land Cadastre

Cadastre of
Utilities

Basic Topographic
Database

Prices of Real
Estate Register

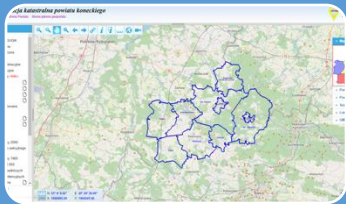
Register of
Geodetic Detailed
Control Points

Documents of
Geodetic and
Cartographic
Resource

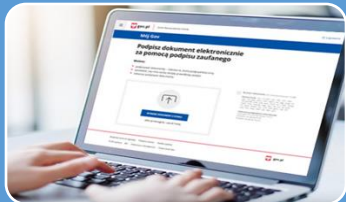
Cadastral data distribution



Network services



Counties (geo)portals

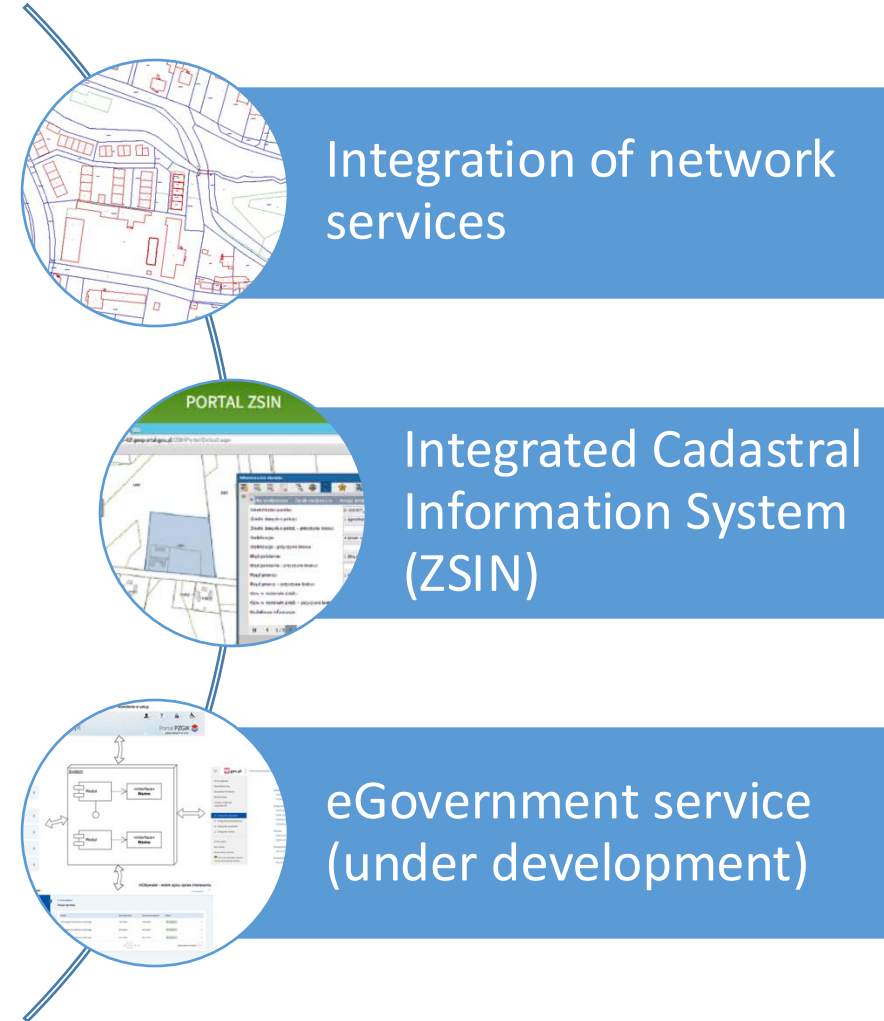


Other digital means (email, eGov)



Visit in the office

How GUGiK integrates fragmented cadastre?



Subset of Land Cadastre is published as **Open Data** via network services

Web Feature Service (WFS)

Cadastral parcel

- geometry
- cadastral parcel identifier
- parcel number
- identifier of cadastral zone
- identifier of cadastral unit
- name of cadastral zone
- name of commune
- date of data publication

Building

- geometry
- building identifier
- type of building
- date of data publication

Subset of Land Cadastre is published as **Open Data** via network services

Web Map Service (WMS)

Cadastral Parcels

- cadastral parcel identifier
- number
- identifier of cadastral zone
- Identifier of cadastral unit
- name of cadastral zone
- name of the commune
- area
- land use classes
- ownership category

Building

- building identifier
- type of building
- number of above ground floors
- number of underground floors

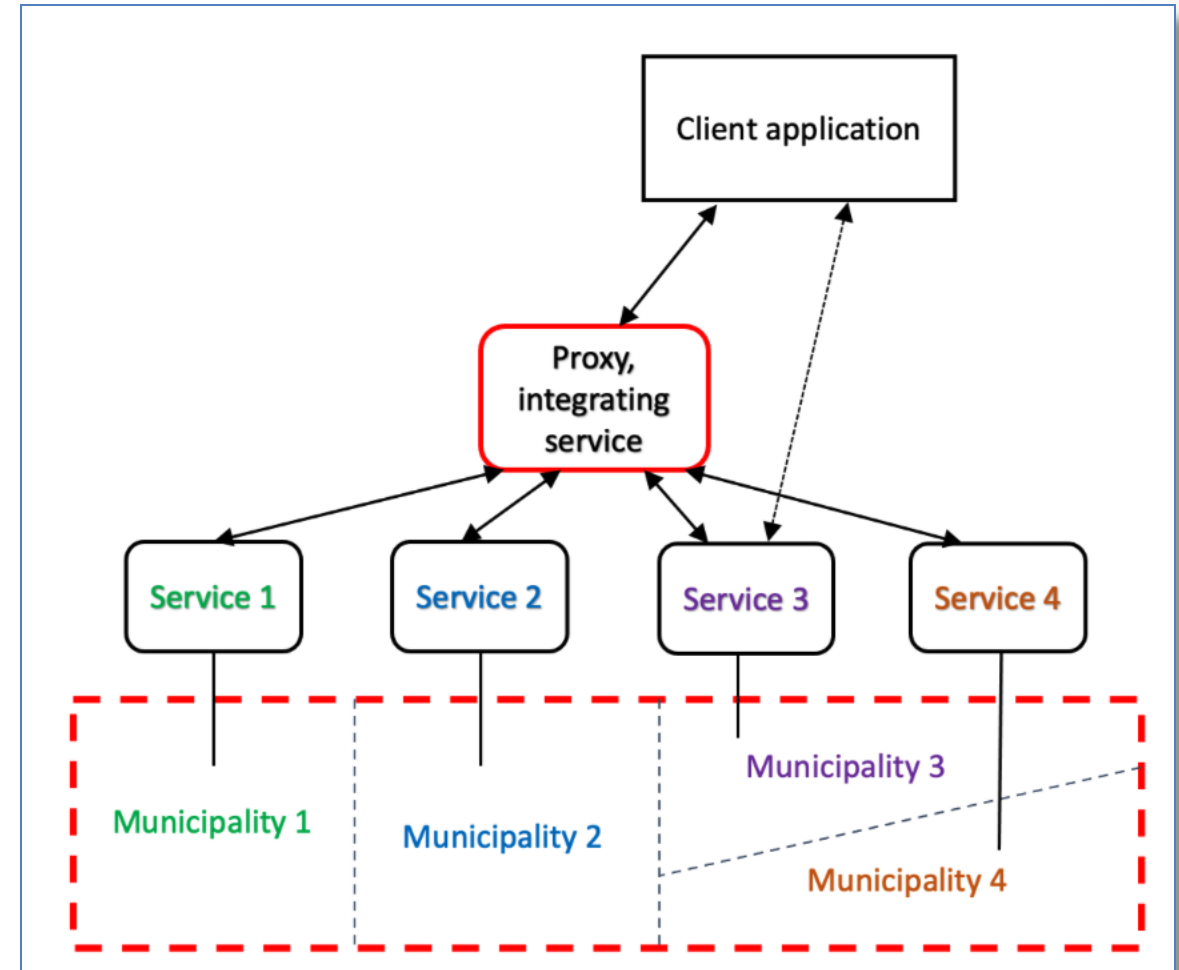
Land use

- land use category

Soil quality

- soil quality category

- ✓ GUGiK integrates local WMS and WFS services published by local governments (counties)
- ✓ Integrating service allows users to access cadastral data from one endpoint instead of 385 local endpoints
- ✓ The European Commission endorsed this way of integrating spatial data as [INSPIRE Good Practice](#)



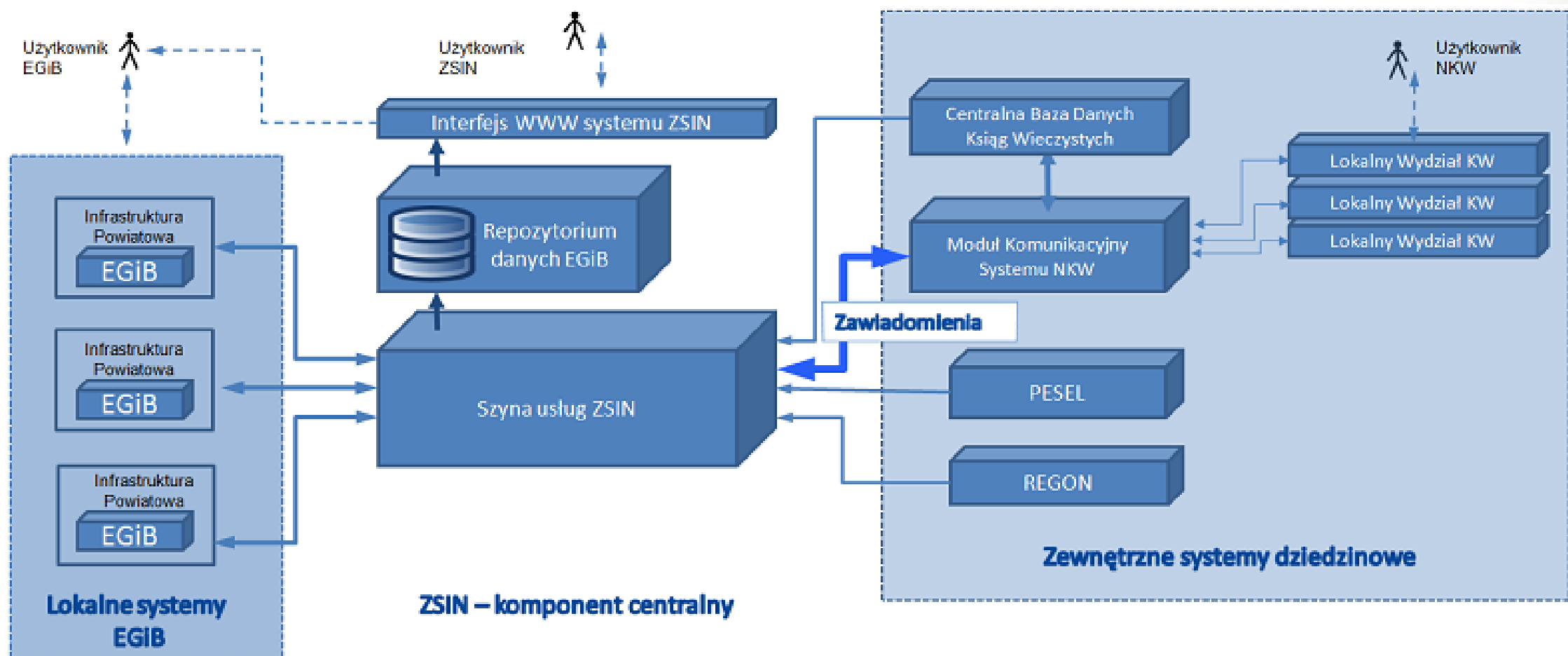
State Integration of Land Cadastre Service (KIEG)

- WMS API
- Works on top of local view WMS services
- Allows to display a cadastral map for any part of Poland
- Allows to display attributes of any cadastral parcel in Poland

Cadastral Data Localisation Service (ULDK)

- Custom API
- Works on top of local download WFS services
- Allows to find any cadastral parcel or building in Poland using different parameters e. g. id, geometry, cadastral zone name and parcel number

Integrated Cadastral Information System (ZSIN) (1)



Cadastral data backup and integration

- Integrated database containing data from all counties (updated at least once a year)
- Cadastral data quality verification
- Provides access to cadastral data for authorised users

Integrates local cadastral systems with state registers

- EKW (Land Register)
- PESEL (Register of individuals)
- REGON (Register of business entities)

Service validation

- Web service
- Validates local WMS and WFS services against rules from data specifications

Data validation

- QGIS plugin
- Validates cadastral data against GML application schemas and additional rules from data specifications

Walidator zgodności usług WMS/WFS

Adres usługi:

Rodzaj danych: EGIB

Rodzaj usługi: WMS WFS

Identyfikator jednostki:

X: Y: Kod układu współrzędnych: EPSG:2180

[Opcje usługi walidacji](#) Główny Urząd Geodezji i Kartografii

Walidator plików GML

Walidacja plików GML | Kontrola atrybutów GML | Dane źródłowe | Ustawienia | Infor

Wskazany plik:

Walidowana baza: EGIB

Formaty raportów: xls

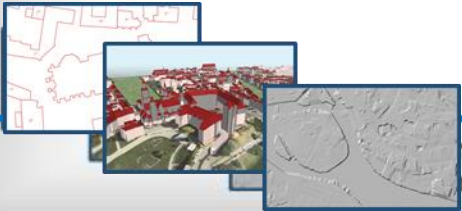
[Główny Urząd Geodezji i Kartografii](#) Cancel OK

GUGIK 2024

PCC in Poland – data and venue



On January 1st, 2025, Poland will assume the Presidency of the Council of the European Union for the second time, so the next conference of the Permanent Committee on Cadastre (PCC) will be held on **May 5-6, 2025**, at the **PGE National Stadium** in Warsaw as part of the program of meetings organized under the Presidency.





Software

- Operational model (centralised, distributed)
- Maintenance model (external or internal, funding)
- Other (cybersecurity, AI, etc.)

10/2025

3D, 4D cadastre

- Legal and organisational frameworks
- Data models
- Technological challenges



Thank you for your kind attention

www.gov.pl/web/gugik

www.geoportal.gov.pl

marcin.grudzien@gugik.gov.pl