

Romania

National Agency for Cadastre and Land Registration of Romania

Significant progress towards completion of the general cadastre achieved in Romania

"I am very pleased with the significant progress achieved towards the realisation of the general cadastre in Romania. This will facilitate the government, the central, and the local authorities to take documented decisions, In addition, it will contribute to the proportional increase in income from property taxation, will facilitate access to agricultural credits for small farmers and contribute to renewable energy projects by identifying locations for installations."

Laurentiu Alexandru Blaga
Director General, National Agency
for Cadastre and Land Registration,
Romania

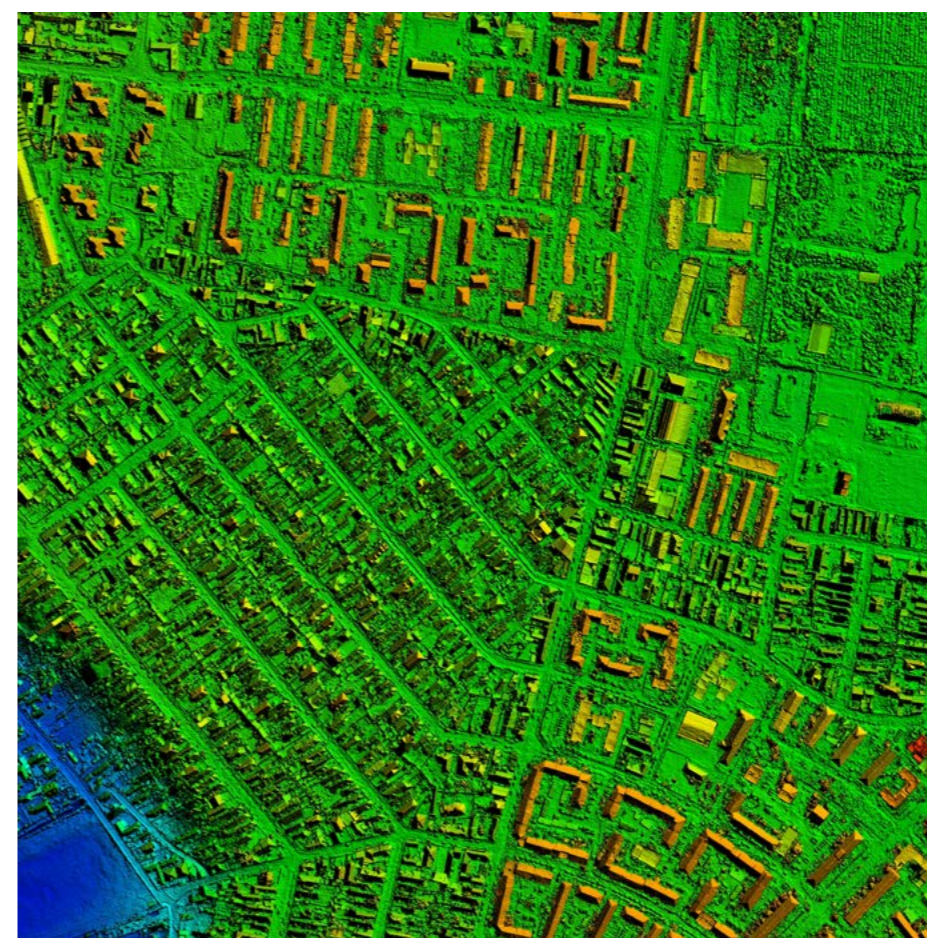
Completion of the general cadastre remains a national priority in Romania. The National Agency for Cadastre and Land Registration ended 2023 having delivered significant results accomplished through the National Cadastre and Land Registry Program (PNCCF).

To support this program, a national scale project was developed for the realisation of true-orthophoto plans for urban areas. The project covers 320 administrative territorial units and is carried out within the National Mapping Centre. The National Mapping Centre is a public institution with legal personality and subordinated to the National Agency for Cadastre and Land Registration.

For the country's capital, the city of Bucharest, images were acquired using the UltraCam 4.1 oblique photogrammetric camera. For the rest of the localities, the images were harvested with the UltraCam Eagle Mark or UltraCam Lp nadir photogrammetric cameras.

The results of the project, a true-orthophoto plan for the 320 UATs in the urban environment, will support the implementation of the systematic registration works and the quality verification of cadastral documentation prepared for the sporadic registration of properties.

The innovative oblique image acquisition technology presents multiple advantages for cadastral activity.



Benefits

- Enables excellent visibility of roofs and facades, multiple views (including nadir views).
- Allows easy interpretation of building types (number of floors, footprints etc.).
- Provides potential access to products delivered by the project to the central administration, local administrations and civil society.
- Supports the further development of applications in areas such as:
 - Energy management (estimating the photovoltaic potential of building roofs, with the aim of producing renewable energy).
 - Monitoring heat losses of buildings and determination of energy losses.
 - Urban planning (realisation of General Urban Plans, preparation of urban planning documentation, generation or updating of topographical or thematic maps).
 - Identification of constructions erected without authorisation and verification of compliance with the conditions of building authorisation.