



# Opening Session

Deputy Director General Jesper Nørgaard Andersen

4. November 2025



Danish Geodata Agency





DGA

Conference  
venue

Welcome to Aalborg





# The Danish Geodata Agency

(Geodatastyrelsen - GST)



Danish Geodata Agency

1. januar  
**1989**

Danish Geodata Agency was originally established as a government enterprise — called the National Survey and Cadastre.

28. juni  
**2015**

Danish Geodata Agency became a part of the Ministry of Climate, Energy and Utilities.

1. januar  
**2016**

The former Danish Geodata Agency was divided into two independent agencies: the Danish Agency for Data Supply and Efficiency (now the Climate Data Agency) and the Danish Geodata Agency, was relocated to Aalborg. Today approximately 175 employees.





## Danish Ministry of Climate, Energy and Utilities



The Danish Energy Agency



The Danish Agency for Climate Data



The Danish Meteorological Institute



The Danish Geodata Agency



The Geological Survey of Denmark og Greenland (GEUS)



Forsyningstilsynet

**ENERGINET**

**Klimarådet.**

# Main tasks with in the DGA



## Cadaster and Property Data



- About 50 employees
- Around 10 student assistants



## Nautical Charts and Marine Data



- About 75 employees and 13 hydrographic surveyors
- Around 10 student assistants

# DGA strategy

## Vision

We ensure easy access to reliable, location-based information about the sea and real estate.

## Mission

We collect, quality-assure, and communicate authoritative data in the areas of real estate and hydrography.  
We do this across authorities and stakeholders — for the benefit of society as a whole.



# Nautical Charts and Marine Data in Denmark and Greenland

We collect, store, and quality-assure depth data and produce and develop nautical charts, nautical publications, and other marine products.

As the national authority for depth information, DGA surveys Danish and Greenlandic waters to produce both electronic and paper charts. Sales of nautical charts and marine products generates revenue to fund the production

Data, charts, and other marine products are continuously maintained, developed, and updated to ensure navigational safety.

Marine data are combined and made available for marine and maritime management purposes.

GST conducts hydrographic surveys in both Danish and Greenlandic waters.



**2.000.000 km<sup>2</sup>**  
in Greenland



**105.000 km<sup>2</sup>**  
in Denmark

With **65.000** passages every year, Danish waters are among the busiest in the world.



# Nautical Charts

**173**

**Papercharts**

Weekly update

**500+**

**Electronical charts**

Daily update

# Cadaster and Property Data

The Cadaster is a fundamental infrastructure that serves important functions in society:

- Securing (registration) of rights, i.e. deeds, mortgages and easements
- Assessment and taxation of real estate
- Planning and management of land use
- Implementation of construction and civil engineering works



## **Cadaster**

Real properties (parcels), condominiums and buildings on leased land



## **Property ownership Register**

All owners and administrators of real estate



## **The Property Location Register**

Fastlægger primær adresse for en ejendom

# Cadaster

**2.1+ mio.**

Real properties

**416.000**

Condominiums

**57.000**

Buildings on  
leased land



# Green Denmark Agreement

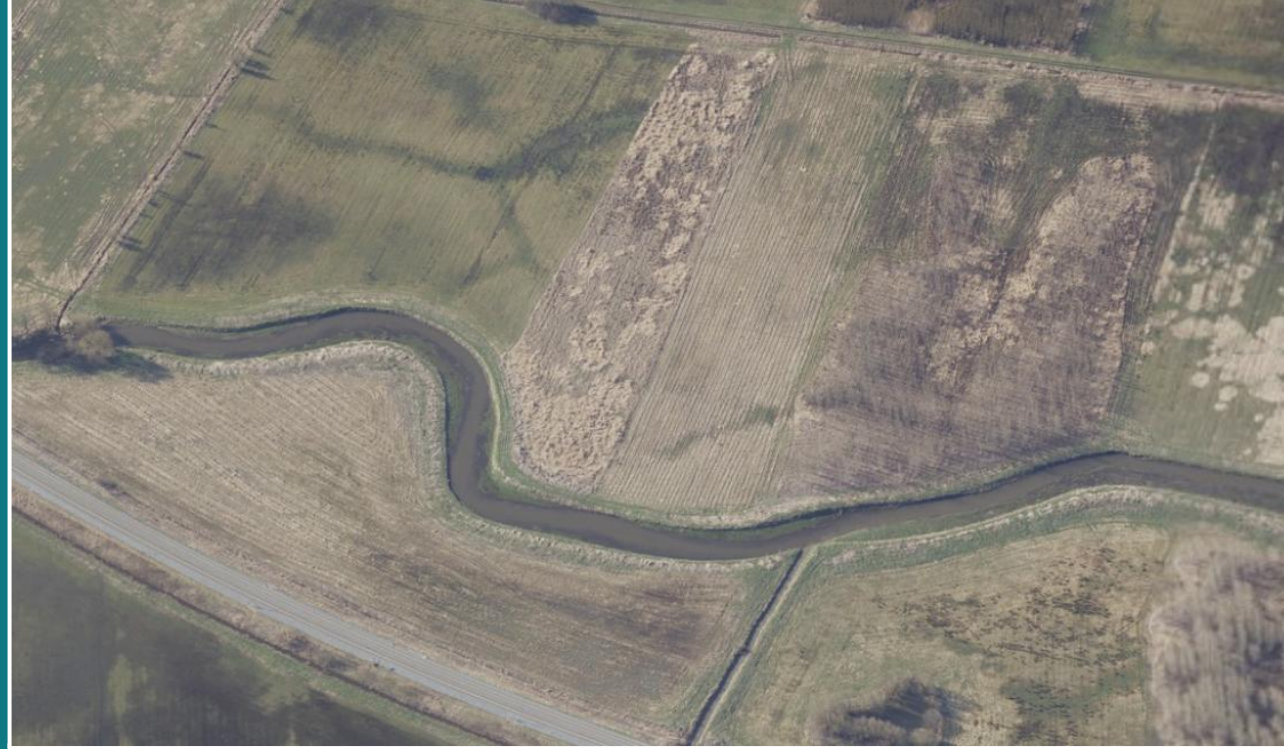
- Political settlement  
(november 2024)
- The purpose:
  - › Reduce greenhouse gas emissions
  - › Improve water quality
  - › Promote biodiversity
- New ministry and agency created:
  - › Ministry of Green Transition
  - › Agency for Green Transition and Aquatic Environment





# Transition of the agricultural sector

- 10 % of Denmark's land area is to be converted to nature and forest by 2045.
  - › 140.000 hectares of carbon-rich lowland soils (by 2030)
  - › 250.000 hectares of new forest, including 100.000 hectares of new forest (undisturbed)
- New land-use restrictions (defined in an act)
- Voluntary agreements with land owners
- Compensation





# DGA contributes to 'green transition' by

Taking part in landconsolidation – a necessary cadastral tool in the green transition

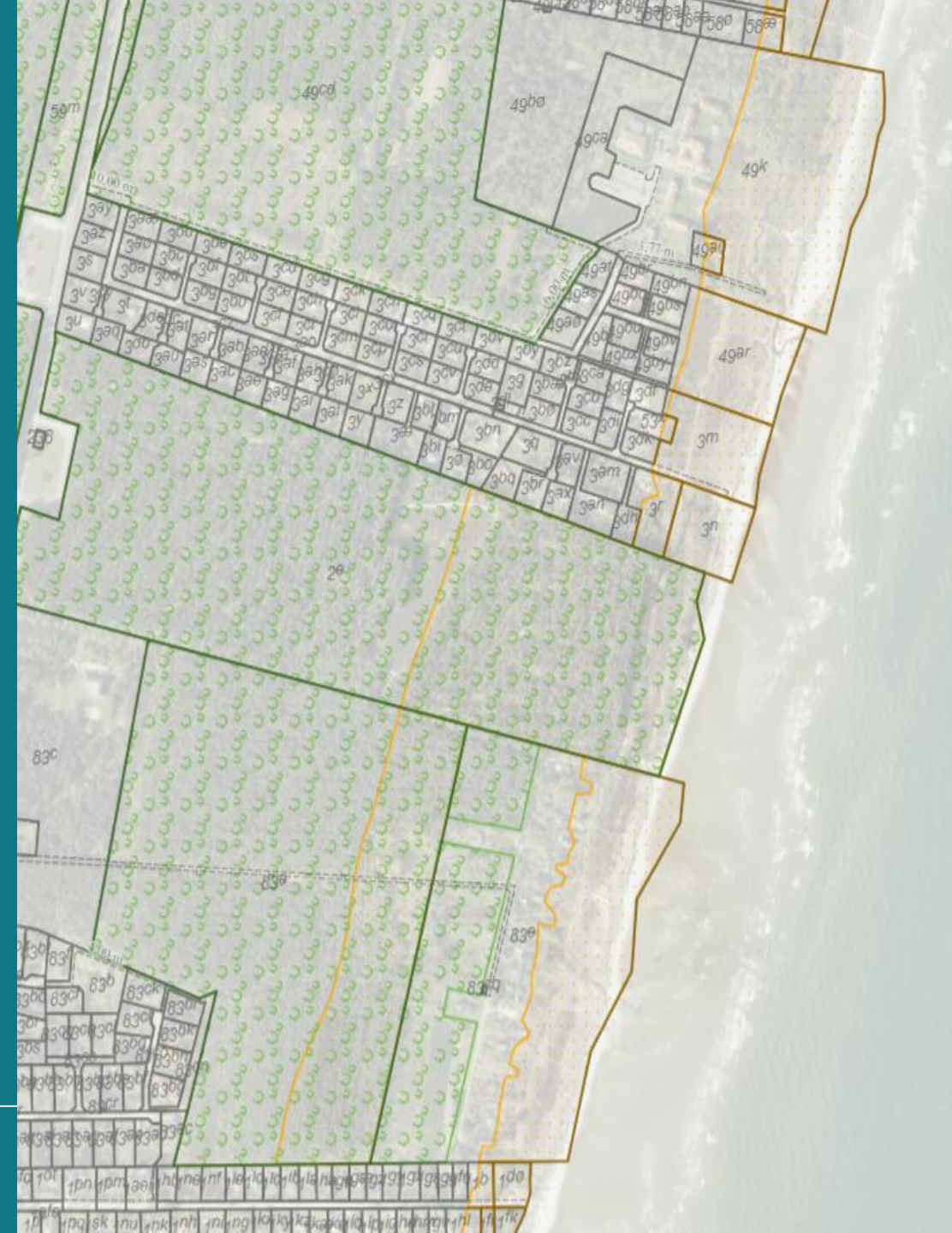
Protected forest obligation – a land use registration registered in the cadastre

- 250.000 hectares new forest will be planted and registered in the cadaster as protected forest
- Expects a large increase in the number of new registrations of protected forest in the cadastre

Providing reliable property data

Making historical cadastral data available for climate adaptation projects.

Registration and identification of wind turbines and similar 'energy' installations both on land and at sea - for use in securing rights in the Land Registry





# I wish you all a productive, engaging, and inspiring conference, and..

- I sincerely hope and firmly believe that over the coming days, we will inspire one another — sharing insights, experiences, and ideas.
- Together, we have a unique opportunity to strengthen the role of the Cadastre — ensuring it remains a vital backbone of Europe, supporting transparency, legal certainty, and sustainable development for generations to come.

