




**The Council of European Geodetic Surveyors**  
**Comité de Liaison des Géomètres Européens**

A large, semi-transparent watermark of the CLGE logo is centered in the background of the slide. It consists of a light blue circle with twelve white stars around its perimeter and a stylized 'CLGE' monogram in the center.

# CLGE

## Working for the Profession

## Working for more Europe

Nele Vanhoutte  
[nele.vanhoutte@clge.eu](mailto:nele.vanhoutte@clge.eu)



# Overview of the presentation

- What is CLGE?
- The importance of geodesy
- Professional governance project
- Young surveyor's contest



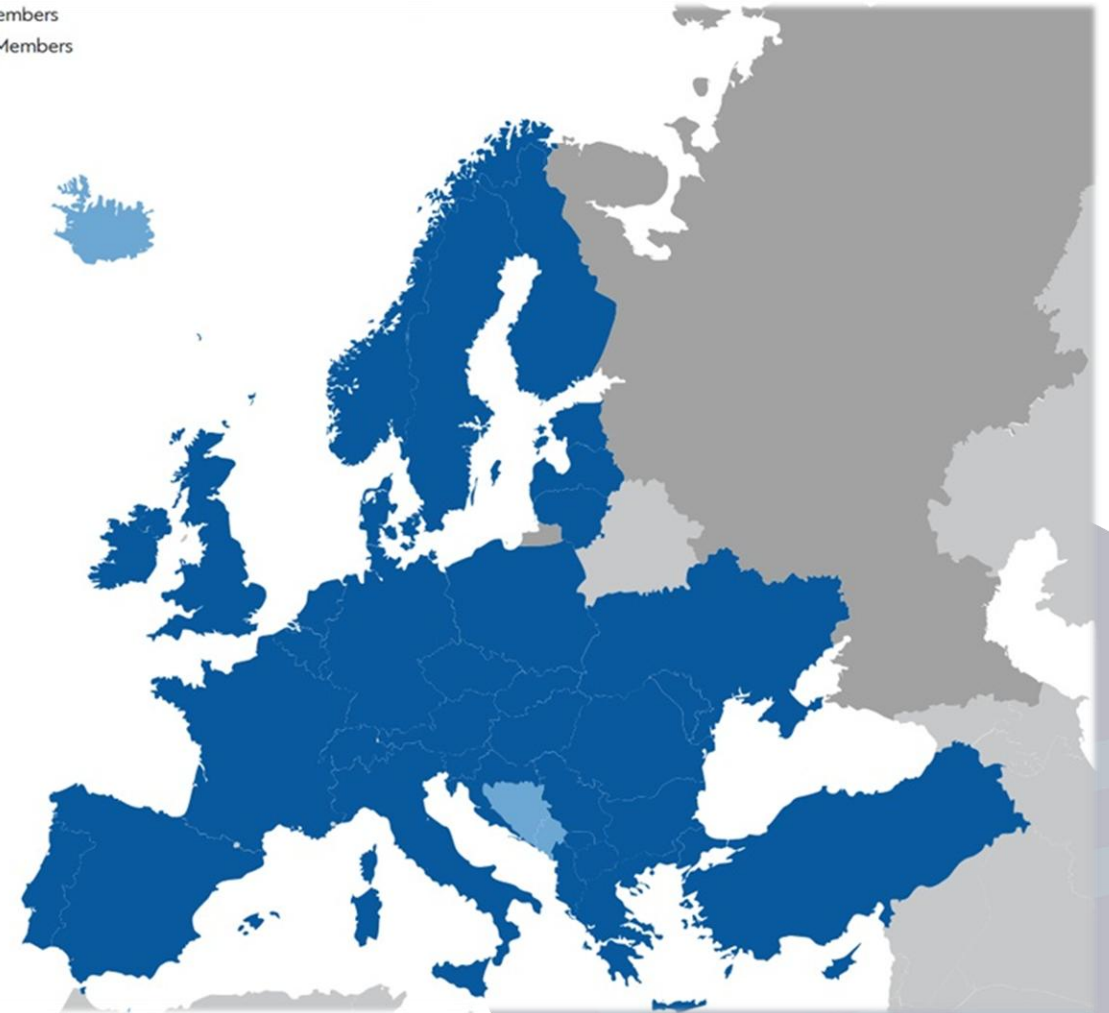


# Leading Surveyors' Association in Europe

- Since 1962
- 37 Member Countries + 3 Observing
- >> 100.000 Surveyors
- Requires close cooperation
  - FIG
  - EuroGeographics, PCC, CEPLIS, ...
  - National Associations, Regional Events

● Principal Members  
● Observing Members

Civil Servants	Publicly Appointed	Regulated Profession	Free Market
-------------------	-----------------------	-------------------------	----------------





# CLGE: a definition

CLGE is the **leading representational body** for the Surveying Profession in Europe.

- Promotes the Profession in the EU
- Fosters its development in the Council of Europe

Surveying includes **Cadastral Surveying** which provides security to land and property title and thus underlies the economic base of western society.

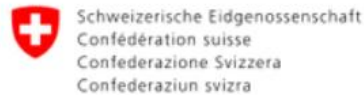
**Geospatial Information** is now ubiquitous in our lives and the Surveyor plays a fundamental role in this field.





The **Council** of European Geodetic Surveyors  
**Comité** de Liaison des Géomètres Européens

# Our institutional members





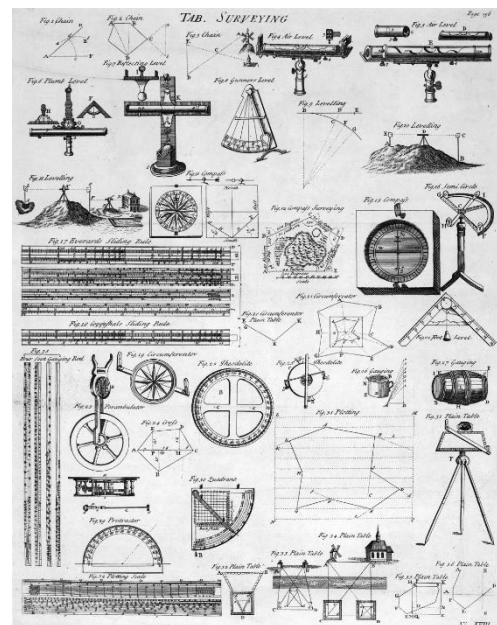
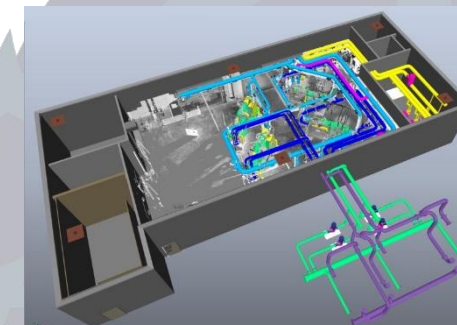
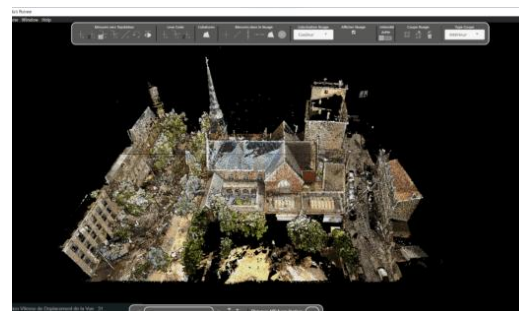
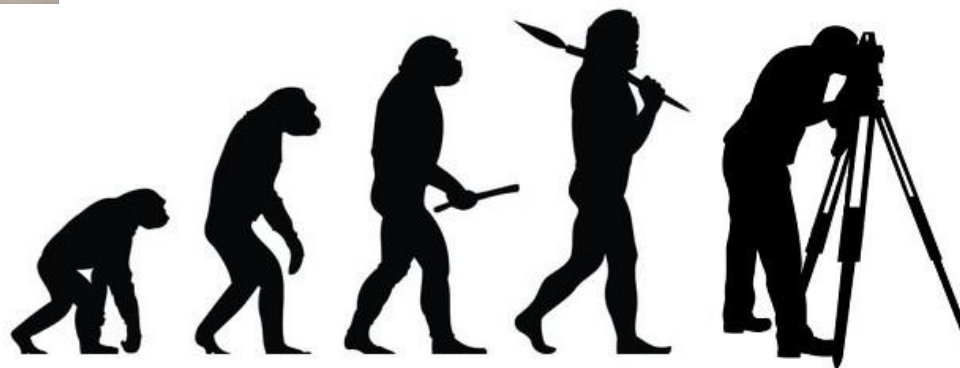
**The Council of European Geodetic Surveyors**  
**Comité de Liaison des Géomètres Européens**



# The importance of Geodesy



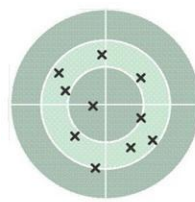
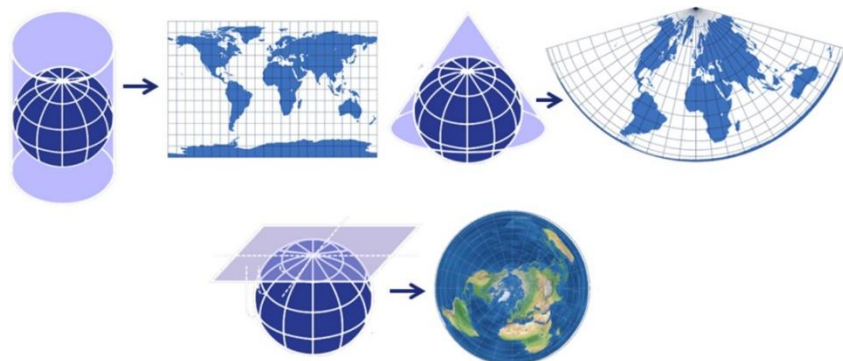
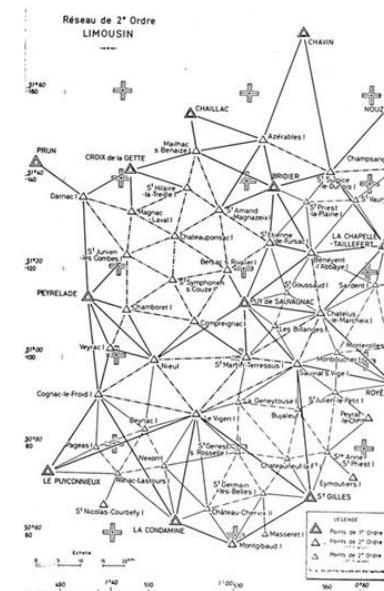
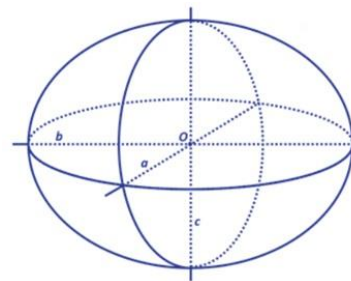
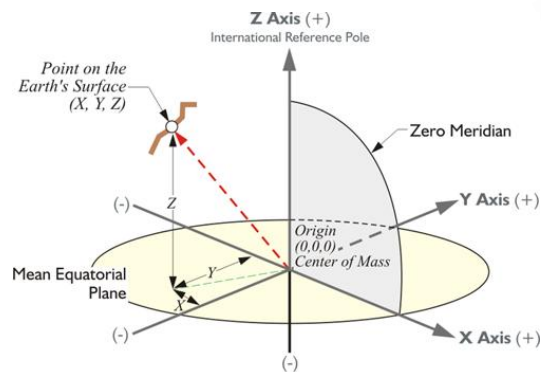
# Technology evolutions in Surveing activities



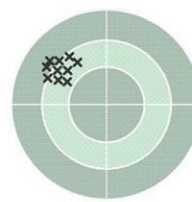




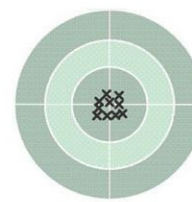
# Geodesy : Our Profession DNA



(A)  
Accurate  
but not  
precise



(B)  
Precise  
but not  
accurate

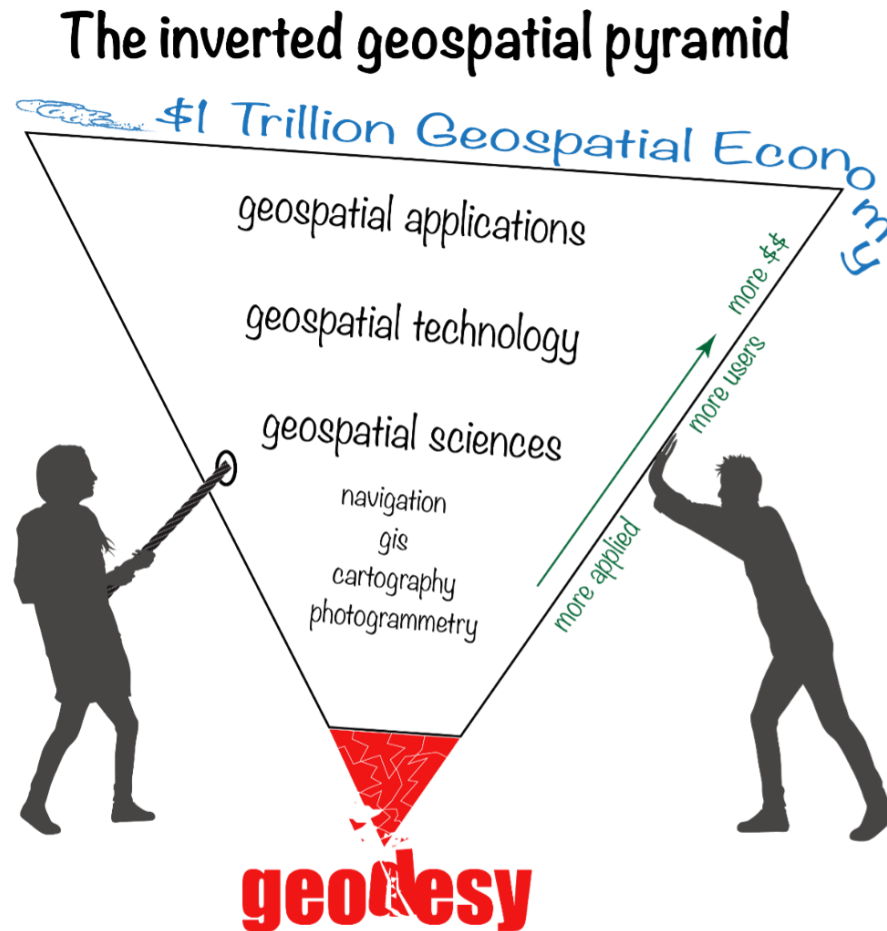


(C)  
Accurate  
and  
precise





# Geodesy : Our Profession DNA



The entire geospatial economy is supported by geodesy!



# Dublin Declaration (18/10/2025)



Adopted at the X Council of European Geodetic Surveyors Conference (CLGE<sup>1</sup>),  
Dublin, 18 October 2025

Land surveying<sup>2</sup> and geodesy form the unseen infrastructure of Europe's future. Without them, neither digital innovation nor sustainable progress can endure.

The European Geodetic Surveyors, gathered at the X CLGE Conference of the European Surveyor in Dublin, on the theme '**Professional Development and Development of the Professional: Geodesy Matters**', and during the CLGE General Assembly, to reaffirm their commitment to advancing the land and geodetic surveying profession across Europe. Building on the legacy of previous CLGE Conferences and Assemblies, they adopt the following declaration:

**1) Strengthening Land and Geodetic Survey Education, and awareness throughout Europe**  
European Surveyors express serious concern over the trend of various universities across Europe closing their educational programmes related to land surveying, and geodesy. This development threatens not only the sustainability of the profession, but also society's ability to meet critical needs in areas such as, but not limited to;

- Land administration and Land management
- Infrastructure development
- National security and resilience
- Position, Navigation and Timing (PNT)
- Geospatial data capture, and management
- Climate resilience
- Digital transformation

Surveyors urgently call upon European governments, academic institutions, and professional organisations to **protect, strengthen, and modernise land surveying and geodesy**. Future professionals must have access to high-quality, innovative education, and training that are grounded in both technical and ethical standards, in service of the public interest.

**2) Geodesy is the Foundation for a Resilient Europe**  
Geodesy is more than a scientific discipline. It is the foundation upon which accurate measurement, mapping, and spatial understanding are rooted. Its contributions are vital to;

- Securing land and property rights
- Delivery of critical infrastructure
- National defence
- Resilient Position, Navigation and Timing
- Developing digital twins and smart cities
- Capturing and supplying robust spatial information
- Supporting disaster management
- Enabling environmental monitoring

<sup>1</sup> CLGE Comité de Liaison des Géomètres Européens – Council of European Geodetic Surveyors.

<sup>2</sup> Surveying is understood to include surveying engineers.



The Conference theme underscores that while technologies evolve rapidly, the **human expertise of land and geodetic surveyors is irreplaceable**. Ensuring access to bachelors (undergraduate), masters and doctorate (postgraduate) and lifelong learning opportunities together with cultivating a respected and recognised professional identity, is essential to meet existing and future challenges.

**3) Commitment to Professional Development**  
Through CLGE, European Land and Geodetic Surveyors, solemnly commit to:

- **Advocate** for the recognition and preservation of land and geodetic surveying programs at national and European levels.
- **Collaborate** with stakeholders to raise the visibility of land and geodetic surveying as strategic disciplines for Europe's future.
- **Foster** a respected and recognised professional community for land and geodetic surveyors dedicated to innovation, ethical practice, and serving the public interest.
- **Support** continuous professional development, to keep land and geodetic surveyors at the forefront of technological and societal change.

Signed in Dublin, 18th October 2025

Nicolas Smith  
CLGE President

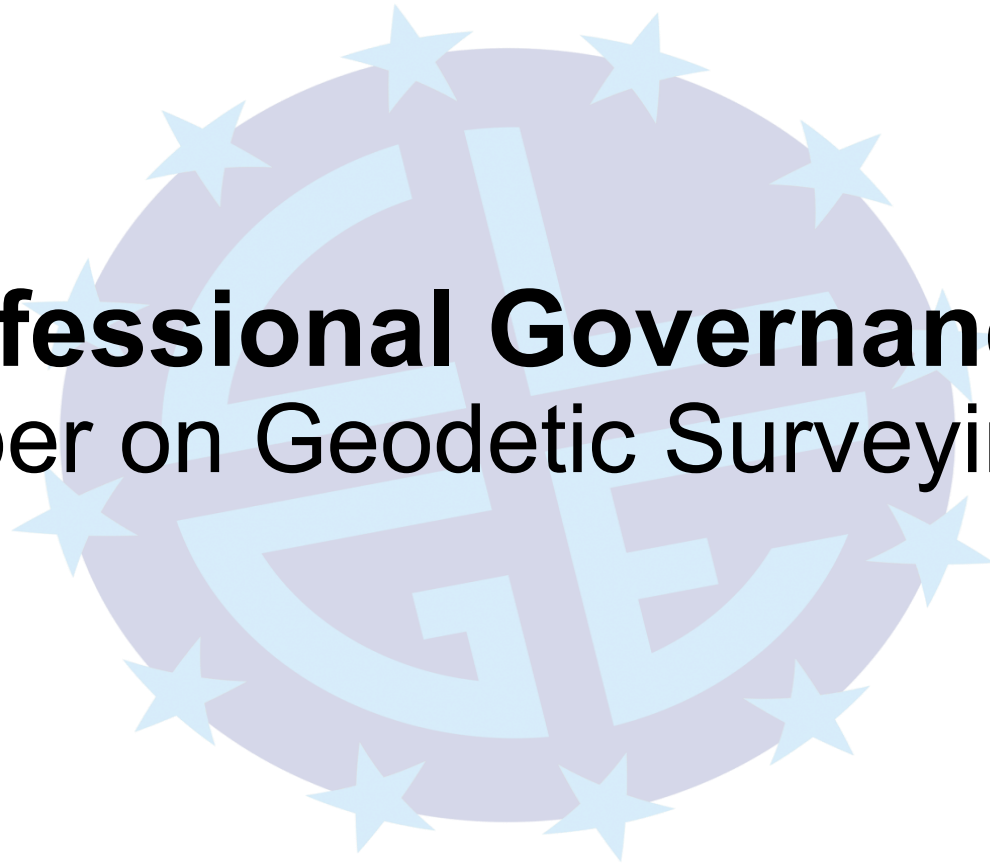
Paddy Prendergast PhD  
Geomatics Chair, SCSI





**The Council of European Geodetic Surveyors**  
**Comité de Liaison des Géomètres Européens**

# **The Professional Governance Project** **(White Paper on Geodetic Surveying in Europe)**







# EGSAct

- European Geodetic Surveyors' Act
- White Paper on Surveying in Europe (smart Regulation)
  - Sector Study (Facts and Figures about Surveying in Europe)
  - Impact of Surveying (economic, legal and social)
  - CLGE Recommendations for the Future
- Code of Professional Qualifications for Property Surveyors



# Goals

- Externally - Promote the profession
  - Systematically present the importance of the geodetic surveying profession, its economic, legal, and social impact
  - Future directions for geodetic surveying in Europe - strengthening the role of geodetic surveying in One Europe
- Internally – CLGE protect from deregulation
  - Smartly regulated profession
  - Inform drafting of the European Geodetic Surveyors Act



# Ambition

- Groundwork for the European Geodetic Surveyors Act – late 2025 - early 2027
- Main results – presenting at the Autumn 2027 XI CLGE Conference of the European Surveyor







# Geodetic Surveyors and SDGs

65% of the 169 targets underlying the 17 Goals are linked to territorial and urban development

1 PEOPLE	2 ZERO	3 GOOD	4 QUALITY	5 GENDER	6 CLEAN	7 AFFORDABLE	8 ECONOMIC	9 INDUSTRY	10 REDUCED	11 SUSTAINABLE	12 RESPONSIBLE	13 CLIMATE	14 LIFE	15 LAND	16 PEACE	17 PARTNERSHIP
1.1	2.1	3.1	4.1	5.1	6.1	7.1	8.1	9.1	10.1	11.1	12.1	13.1	14.1	15.1	16.1	17.1
1.2	2.2	3.2	4.2	5.2	6.2	7.2	8.2	9.2	10.2	11.2	12.2	13.2	14.2	15.2	16.2	17.2
1.3	2.3	3.3	4.3	5.3	6.3	7.3	8.3	9.3	10.3	11.3	12.3	13.3	14.3	15.3	16.3	17.3
1.4	2.4	3.4	4.4	5.4	6.4	7a	8.4	9.4	10.4	11.4	12.4	13a	14.4	15.4	16.4	17.4
1.5	2.5	3.5	4.5	5.5	6.5	7b	8.5	9.5	10.5	11.5	12.5	13b	14.5	15.5	16.5	17.5
1a	2a	3.6	4.5	5.6	6.6		8.6	9a	10.6	11.6	12.6		14.6	15.6	16.6	17.6
1b	2b	3.7	4.6	5a	6a		8.7	9b	10.7	11.7	12.7		14.7	15.7	16.7	17.7
		3.8	4a	5b	6b		8.8	9c	10a	11a	12.8		14a	15.8	16.8	17.8
		3.9	4b	5c			8.9		10b	11b	12a		14b	15.9	16.9	17.9
		3a	4c				8.10		10c	11c	12b		14c	15a	16.10	17.10
		3b					8a				12c			15b	16a	17.11
		3c					8b							15c	16b	17.12
		3d														17.13
																17.14
																17.15
																17.16
																17.17
																17.18
																17.19



# What others have done in other fields?

## European Psychotherapy Act



## European Union Standards for Nursing and Midwifery; Delegated Act – proposal



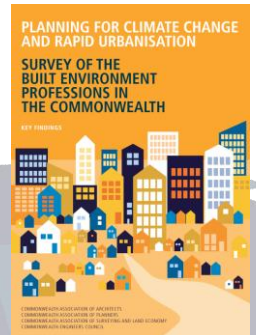
## European Council of the Liberal Professions



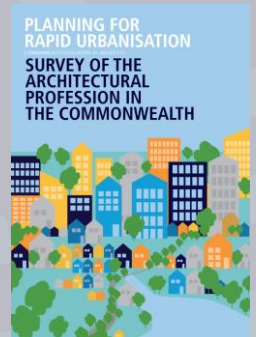
## Architects' Council of Europe The Architectural Profession in Europe 2024 Sector Study



## Survey of the Built Environment Professions in the Commonwealth 2020



## Survey of the Architectural Profession in the Commonwealth 2018





# Professional Governance Project

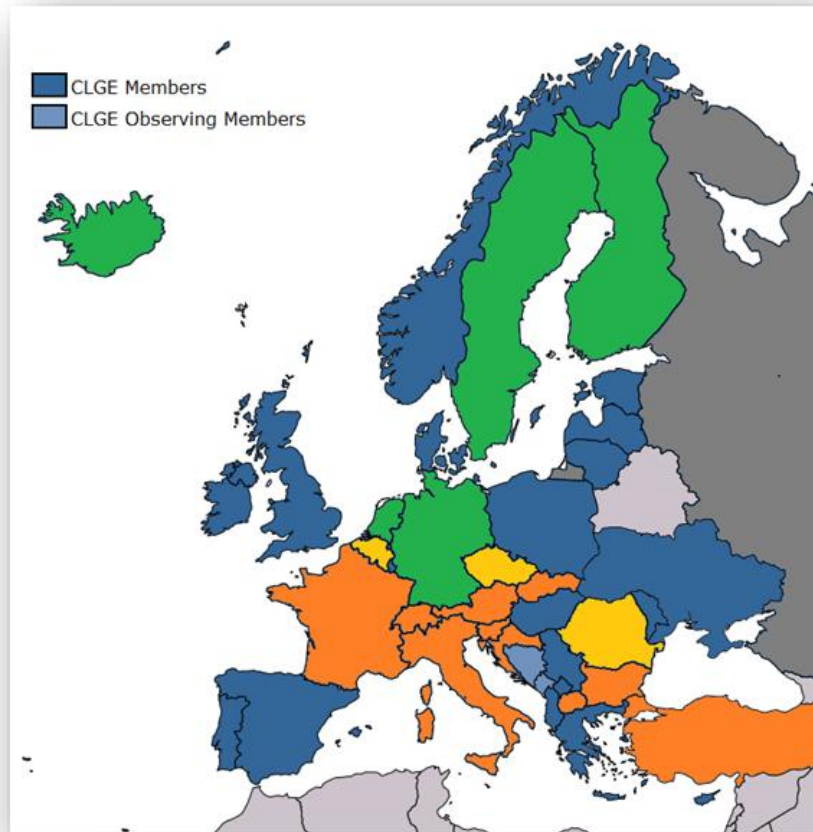
## Different Professional Governance Models (examples)

- State run governance
  - Ministry, Authority, Agency
  - Property surveyors are Civil Servants
- Governance outsourced by the State
  - Ministry, Authority, Agency
  - Chamber
  - Property Surveyors are Private Surveyors, or employees, or civil servants
- Low level of Governance
  - Associations try to establish some self-regulation





# Professional Governance Project



- Green: countries in which the State plays an important role
- Orange: Governance outsourced by the State
- Yellow: recent creation of a chamber



**The Council of European Geodetic Surveyors**  
**Comité de Liaison des Géomètres Européens**

# Young Surveyors' Contest



# Young Surveyor's Contest, what?



- Max. 35 years old
- 2 categories (Master/bachelor thesis AND **projects at company in Geodesy or related fields**)
- Application form (1000 words + max. 5 illustrations)
- Topic of geodesy, cadastre, mapping, geoinformation
- **Deadline July – August 2026**
- Online finals in September
- Awarding Ceremony during INTERGEO München 16/09/2026





# Young Surveyor's Contest, why?



- 1<sup>st</sup> €1500  
2<sup>nd</sup> €1000  
3<sup>rd</sup> €500
- Awarding ceremony at INTERGEO for free
- CLGE will fund travel and hotel costs
- Fame as a young surveyor, experience, improve CV, meet colleagues, engagement in international activities, ambassador of YSC ...



The Council of European Geodesy  
Comité d'Europe de Géodésie

**Paweł Czernic**

Moscow University of Technology, Poland

**Mar Roca Mora**

Spanish National Research Council, Spain

**Juan Portela**

PhD in Geomatics Engineering (Universidad Politécnica de Madrid, Spain)  
Hydrographic Surveyor at Jan de Nul, Belgium

**Miloš Basarić**

Junior Researches at Military Geographical Institute in Belgrade  
PhD student of Geoinformatics at the Faculty of Technical Sciences  
University of Novi Sad, Serbia

Second Prize winner in 2024 for Master's thesis  
"Automatic Extraction and Placement of Building Point Vector Data from  
Aerial Imagery for the 1: 25 000 Topographic Map Production using U-N

«Winning this Second Prize from CLGE for my Master's thesis wasn't just a sign that I'm on the right track — it was a huge boost of motivation! Now, as a PhD researcher in geospatial technology, this recognition has inspired me to keep exploring how spatial data and modern technologies can help solve real-world challenges. Attending INTERGEO opened the door to new ideas and connected me with people who are pushing the boundaries in geo-sciences. In short, the award made me even more curious, inspired, and committed to turning data into smart decisions.»

Contest

Young  
Surveyors'  
Contest

Young  
Surveyors'  
Contest

Young  
Surveyors'  
Contest

Young  
Surveyors'  
Contest





# CLGE YS Contest 2025 (13th edition)

- We've got 30 applications
- Statistics by countries:
  - 10 – Germany
  - 5 – Austria
  - 2 – Spain and Poland
  - 2 – France, Bosnia and Herzegovina
  - 1 – North Macedonia, Estonia, Belgium, Switzerland, Italy, Türkiye, Ukraine, Romania and one from joint programme - DE/PT/ES



Total Number of Papers

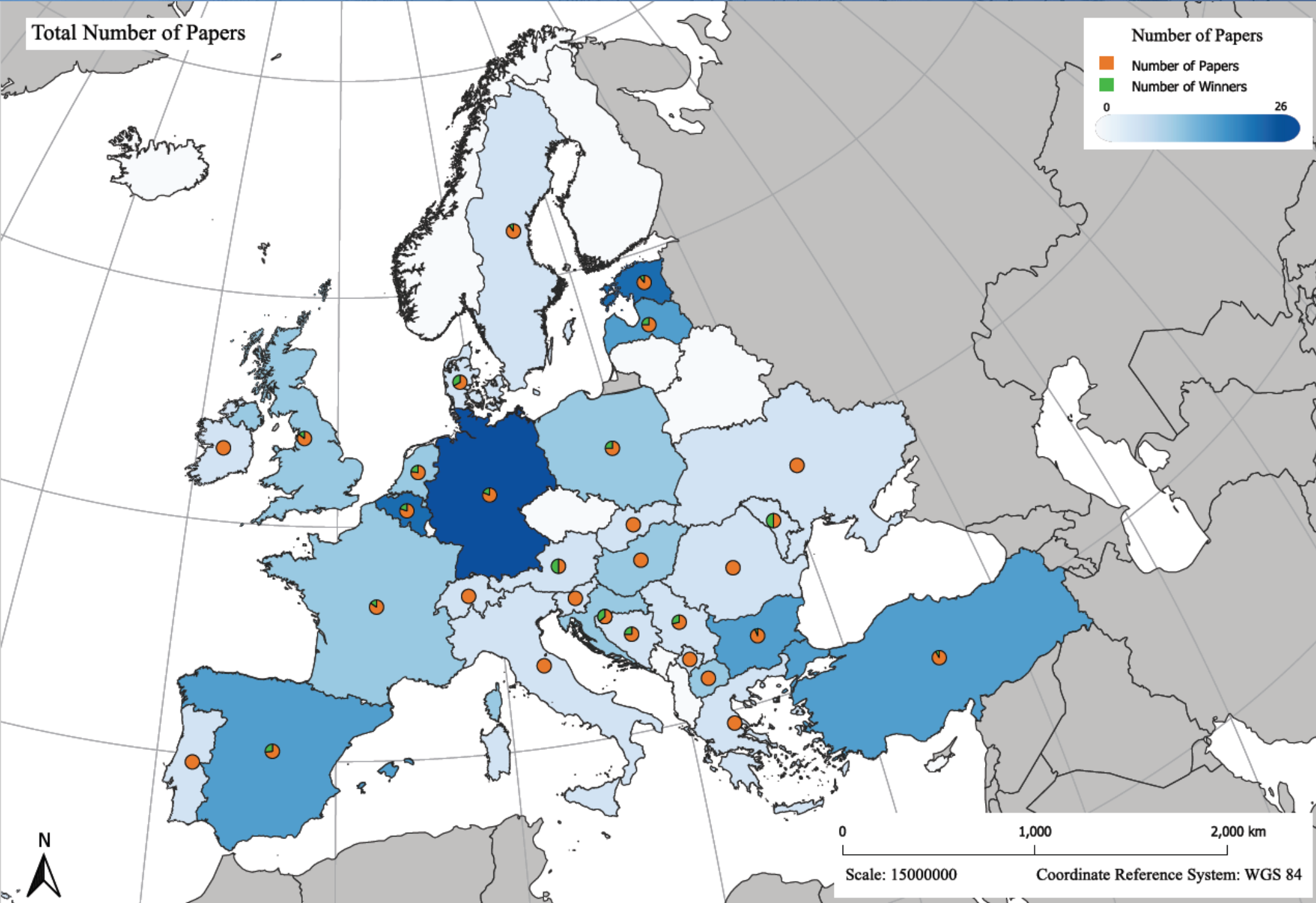
Number of Papers

Number of Papers

Number of Winners

0

26

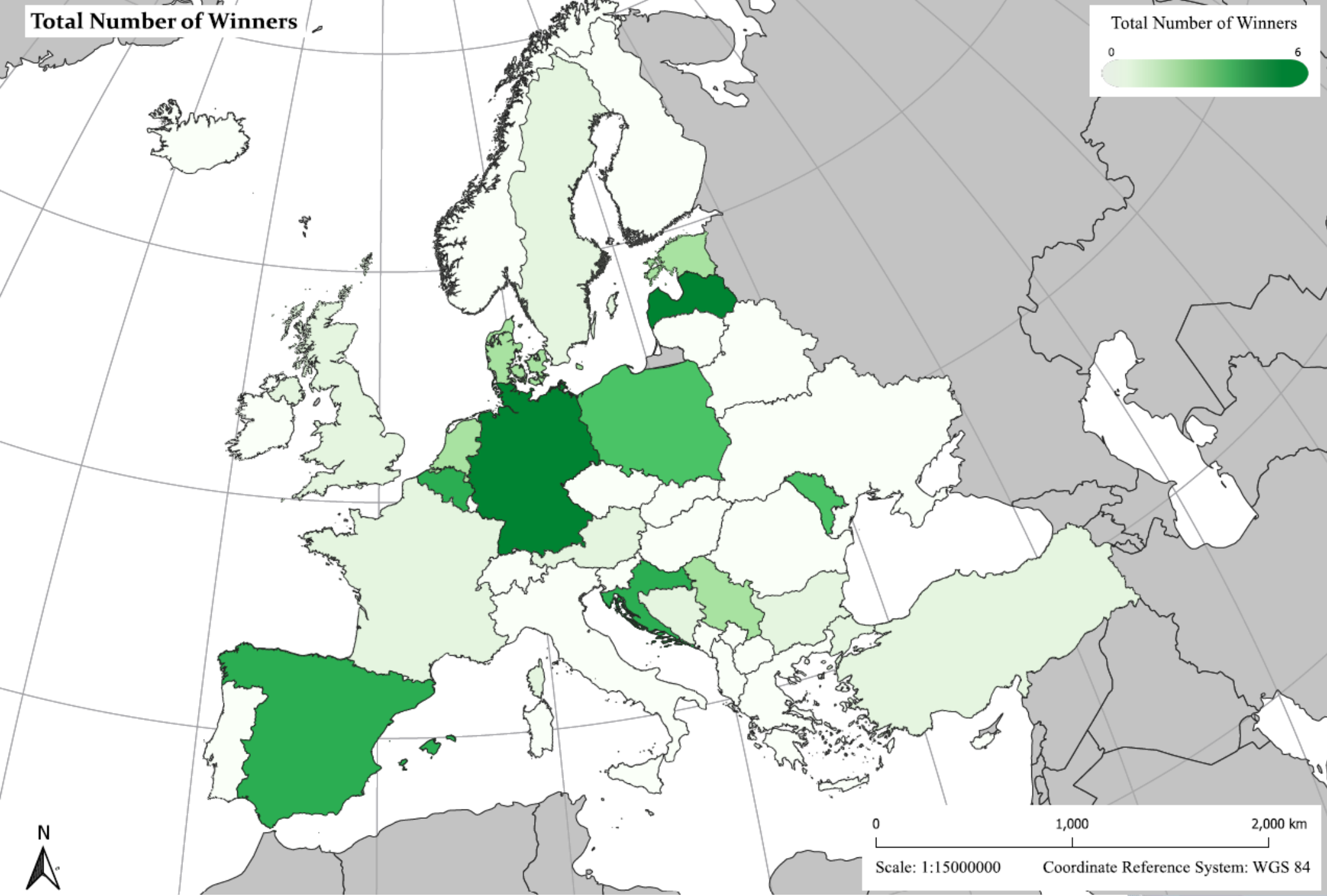


Total Number of Winners

Total Number of Winners

0

6



0 1,000 2,000 km

Scale: 1:15000000 Coordinate Reference System: WGS 84





# The Council of European Geodetic Surveyors

## Comité de Liaison des Géomètres Européens







# Young Surveyors' Contest

- We had a tremendous success in Frankfurt during INTERGEO (8/10/2025)
- Each year we repeat the YSC and we can announce that the next will be in München on 16 September 2026
- It's a success but it would be bigger if...

you could motivate youngsters from your agencies to take part in the category "Projects"




# Photo Contest

## Global Surveyors' day 21 March


The Global Surveyors' Day






**JULIAN CASTILLO ORTEGA**

Villarrobleto-España  
Levantamiento topográfico de Bombo: construcción rural tradicional concebida para alojar en ella a pastores y labradores junto con sus animales de labor y sus aperos de labranza



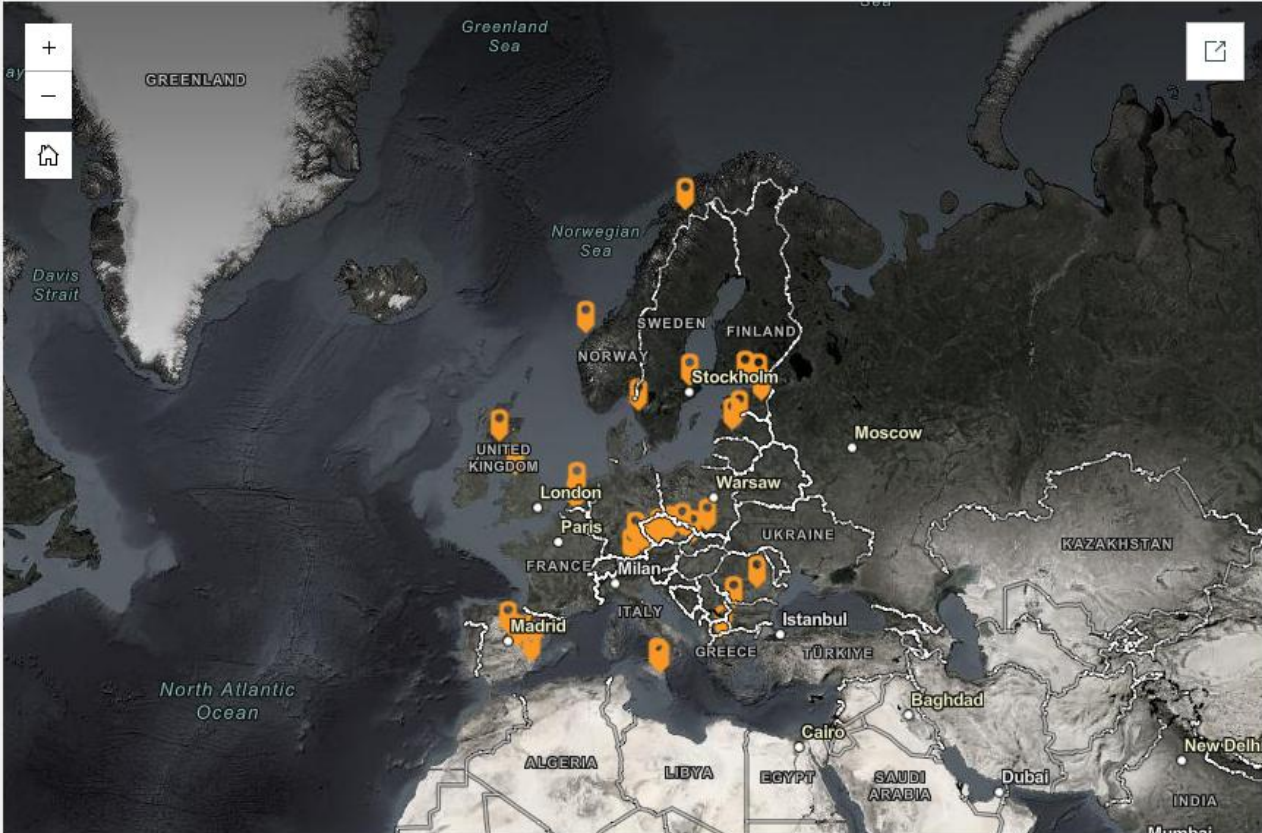
**Álvaro Benito Fernández**

Balsicas (Región de Murcia)  
Setting to stake out.  
After the rain.



**Marcelina Klimek**

Entering the pressure chamber for surveying a tunnel in an urban railway project that is constructed under compressed air at 230m below ground level.



Source: Esri, Maxar, Earthstar Geographics, and the GIS User Community | Esri, TomTom, FAO, NOAA, USGS  
Powered by Esri





# Photo Contest

## Global Surveyors' day 21 March

 3rd Place – Damián Fečík, High Tatras, Slovakia



*“Altitude measurement at the highest point of the Carpathians (High Tatras) – Gerlachovský štít (2,655 metres – confirmed). GNSS measurement.”*





# Photo Contest Global Surveyors' day 21 March

 2nd Place – Sarah Schwarz, Schönberg am Kamp, Lower Austria

*“Our brave colleague Mario defies the freezing cold to take a closer surveyor-look at the river. As soon as he was in, there was already a thumbs-up and a big smile.”*





# Photo Contest

## Global Surveyors' day 21 March

 1st Place – Even Sellevoll, Narvik, Norway

*“Top of Rombakstøtta in Narvik, Norway. Checking height at control point. It was a nice day and I figured - why not check the height at a spectacular spot and get a nice picture as well.”*







**The Council of European Geodetic Surveyors**  
**Comité de Liaison des Géomètres Européens**







The **Council** of European Geodetic Surveyors  
**Comité** de Liaison des Géomètres Européens

# House of the European Surveyor and GI

Brussels, Rue du Nord 76



# Welcome!



*The **Council** of European Geodetic Surveyors*  
***Comité** de Liaison des Géomètres Européens*



Thank you for your attention

Nele Vanhoutte  
[nele.vanhoutte@clge.eu](mailto:nele.vanhoutte@clge.eu)