

Supporting development through UN-GGIM: Europe



UN-GGIM
EUROPE

UNITED NATIONS
COMMITTEE OF EXPERTS ON
GLOBAL GEOSPATIAL
INFORMATION MANAGEMENT

James Norris
UN-GGIM: Europe Executive Committee
7 May 2026



Executive Committee

Chair

- Ingrid Vanden Berghe – Belgium

Members

- Paul Becker – Germany
- Tomaz Petek – Slovenia
- Janusz Dygaszewicz – Poland
- Darko Vucetic – Serbia
- James Norris – United Kingdom
- Mikko Lindholm – Finland
- Neoclis Neocleous - Cyprus



Executive Committee's areas of responsibility

- ExCom members have been designated as focal points for each of UN-GGIM's main areas of activity. This is based on **experience and interest**.
- These focal points will **coordinate UN-GGIM: Europe activities** and contribute to relevant discussions.
- In addition, each of the ExCom members work is **underpinned by four priorities**:



UN-GGIM: Europe

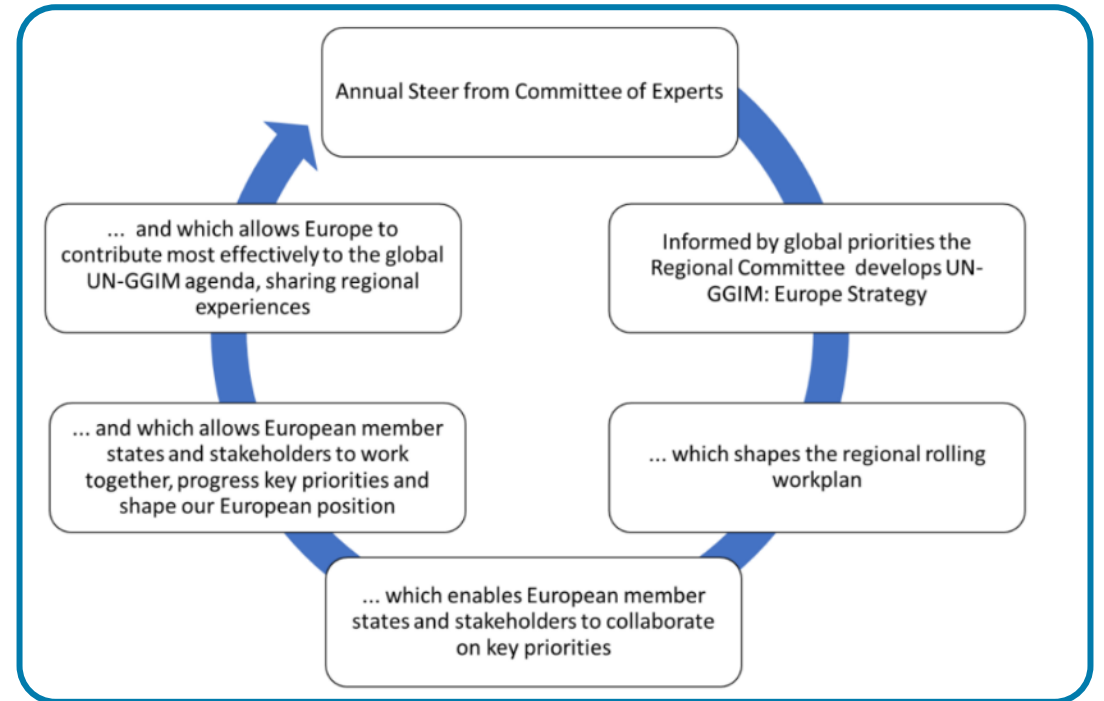
Updated strategy of UN-GGIM: Europe was adopted at the Regional Plenary in 2025.
Currently developing a new workplan to support the updated.

Vision & Mission Statement

Building on the overarching vision of UN-GGIM of *positioning geospatial information to effectively address global challenges*, UN-GGIM: Europe mission is:

Maximise the use of geospatial information in Europe for a safer and more sustainable world.

Through identifying opportunities, understanding and solving common challenges across the Europe Region. By collaborating with partners to enhance the use of geospatial data and its integration with statistics to inform and drive action.



UN-GGIM: Europe Strategy – an overview

Vision & Mission Statement

Building on the overarching vision of UN-GGIM of *positioning geospatial information to effectively address global challenges*, UN-GGIM: Europe mission is:

Maximise the use of geospatial information in Europe for a safer and more sustainable world.

Through identifying opportunities, understanding and solving common challenges across the Europe Region. By collaborating with partners to enhance the use of geospatial data and its integration with statistics to inform and drive action.

The Strategic Pillars

Three main strategic pillars support UN-GGIM: Europe mission and shape its strategy for the next five years.

| | Sharing Knowledge | Raising Awareness | Strategic Leadership |
|--------------|---|---|---|
| AIM | <i>Providing the tools for society to use geospatial information for good</i> | <i>Bringing everyone together by showcasing the added value of geospatial information</i> | <i>Providing strategic alignment with the wider European and global framework in which we operate</i> |
| FOCUS | <i>Prioritising contributions and creating a work plan to take action</i> | <i>Determining relevant partnerships and initiatives to leverage the work</i> | <i>Guiding the core areas of work and strengthening the role of UN-GGIM: Europe</i> |
| GOALS | <p>Create and deliver a Work Plan that links global objectives to European and individual Member States priorities</p> <p>Consolidate the role of geospatial data in addressing SDG indicators</p> <p>Support the provision of geospatial pan-European datasets and derived products as a relevant input for the geospatial and statistical data integration</p> <p>Promote relevant frameworks and standards as tools for Member States</p> <p>Leverage the use of geospatial information and improving its national implementation</p> <p>Embed the principles of DEI and ethical and responsible use of AI</p> | <p>Encourage geospatial data harmonization and quality – official and authoritative geospatial data is key</p> <p>Actively contribute to the work and promote IGIF as an evaluation system and support Member States to implement the UN-IGIF</p> <p>Initiate and promote engagement with relevant partners and stakeholders to ensure greater participation and bridge internal regional gaps</p> <p>Proactively display its work through initiatives and events on specific subjects showcasing the value of geospatial data</p> <p>Bring other data communities in terms of application and data combination and work on data interoperability</p> | <p>Support the global UN-GGIM architecture and cross border cooperation</p> <p>Promote the value of geospatial data and its integration with statistical data</p> <p>Leverage the value of geospatial data to support better decision-making processes to address critical socio-economic and environmental issues</p> <p>Support national capacity building and development in geospatial data and promote cooperation between Member States</p> <p>Create an environment that develops initiatives to promote a clear governance of geospatial data in Europe</p> <p>Provide guidance to officially establish the cooperation between geospatial and statistical organisations in Member States</p> <p>Focus on embedding geospatial data within the post-2030 development agenda</p> |

TRANSLATED INTO UN-GGIM: EUROPE WORK PLAN

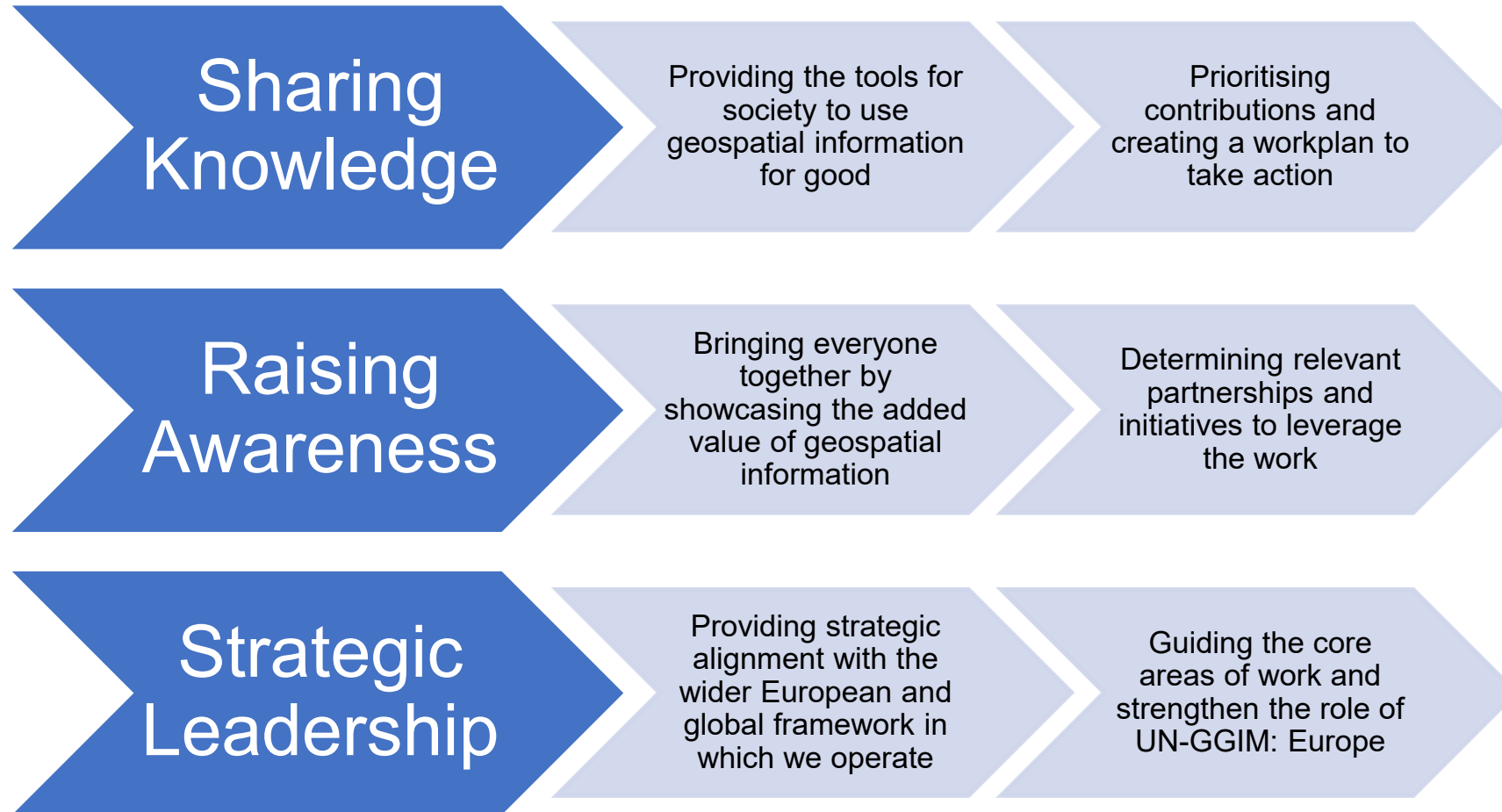
- High-level document
- Is a five-year strategy for our region
- Supports the overall objectives of UN-GGIM and links to the UN-GGIM Strategic Framework 2025-2030
- Call to action for a wider participation and engagement
- Based on three strategic pillars
- Will be translated into a work plan and supported by Member States

Points for consideration...

- Delivery and implementation will need to have impact for Member States
- An approach to growing participation in tasks



UN-GGIM: Europe Strategy 2025-2030



The strategy is delivered through a Work Plan

... a blueprint that facilitates the collaboration of European Member States, European Institutions and observer bodies to work together to progress key priorities that are relevant to the region

Integrated Geospatial Information Framework

- Provides support and input to European Members of the HLG-IGIF
- Contribute to the global tasks of HLG-IGIF making sure regional concerns are raised and addressed
- Understand issues and obstacles that Regional Members may face when looking to implement IGIF

Geodetic Reference Frames

- Contribute to the activities of the Subcommittee of Geodesy
- Focus on growing and sustaining geodesy

Sustainable Development Goals

- Showcasing the added value of integration
- Focus on the use and integration of Earth Observation data

Data Strategy

- Strengthen the links between European policy and the IGIF

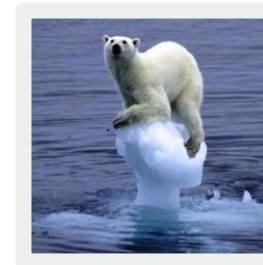
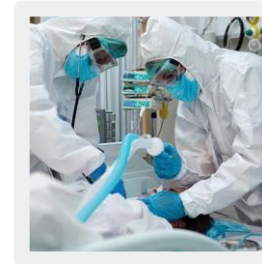
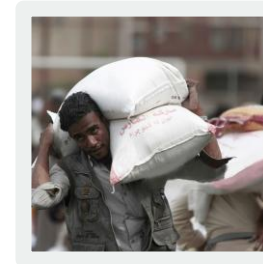
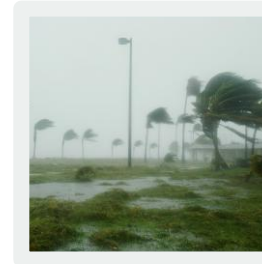
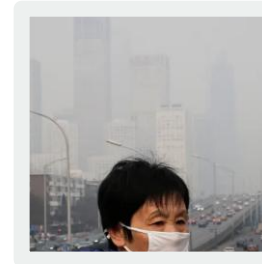
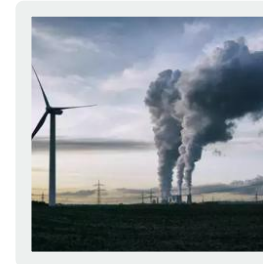
Data Integration

- Maintain the active contribution on data methods and showcasing the value of integrating geospatial data with other data
- Explore ways to support activities promoting geospatial and statistical data integration

Under Review and Development



The need for the UN-IGIF



The need for new data

Relevant Data Sources

- Population
- Age/Gender
- Race
- Education
- Owner/Renter
- Income/Poverty
- Employment
- Health
- Access to services
- Weather
- Business

Geospatial Data

- Addresses
- Buildings and Settlements
- Elevation and Depth
- Functional Areas
- Geographical Names
- Geology/Soils/Water
- Global Geodetic Reference Frame
- Land Cover and Land Use/Land Parcels
- Physical Infrastructure
- Population Distribution
- Orthoimagery
- Transport Networks



Geospatial Data Tools

- Critical Analysis
- Powerful Visualizations
- Maps
- Charts
- Graphics
- Tables
- Dashboards
- Viewers



The UN-IGIF

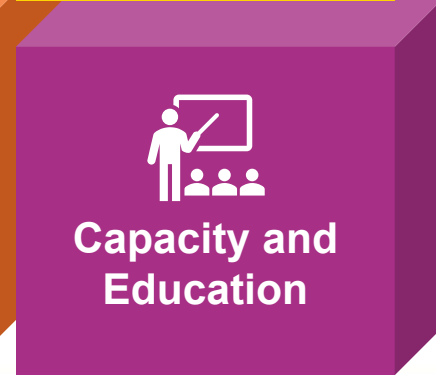
Governance



Technology



People



Working Group membership

Our Working Group began in November 2022.

Members come from across our region.

Albania

Italy

Ukraine

Armenia

Poland

United Kingdom

Belgium

Portugal

Finland

Serbia

EuroGeographics

Germany

Spain

ESRI

Greece

Sweden

ConsultingWhere

Ireland

The Netherlands

EuroSDR



The work plan outline

Deliverable 1: Expert contributions

- Promote regional experts by contributing experts to global tasks
- Support the European representatives on the HLG-IGIF

Deliverable 2: Avoid duplication

- Make sure regional activities support global plans
- Global outputs should be transferrable into UN-GGIM: Europe

Deliverable 3: Share knowledge

- Act as a convening body for UN-GGIM: Europe
- Host knowledge share events such as webinars or seminars

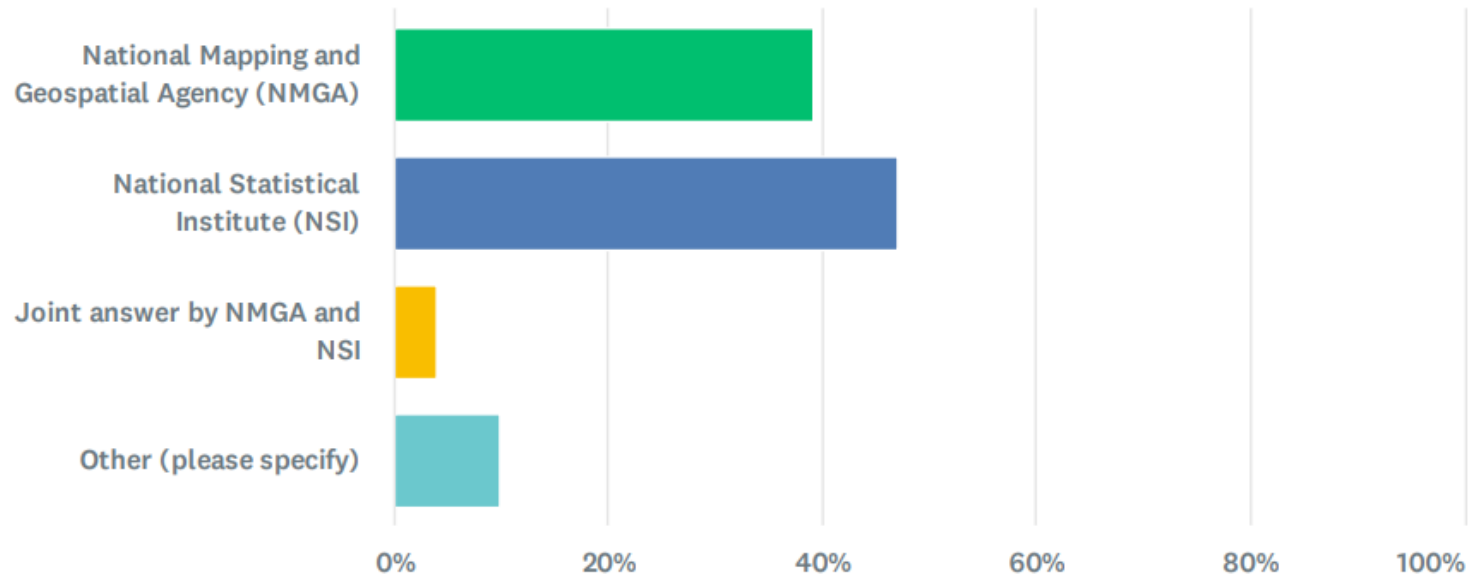
Deliverable 4: Promote regional successes

- Provide Regional case studies.
- Support Member States to develop Country-level Action Plans



Where are we now?

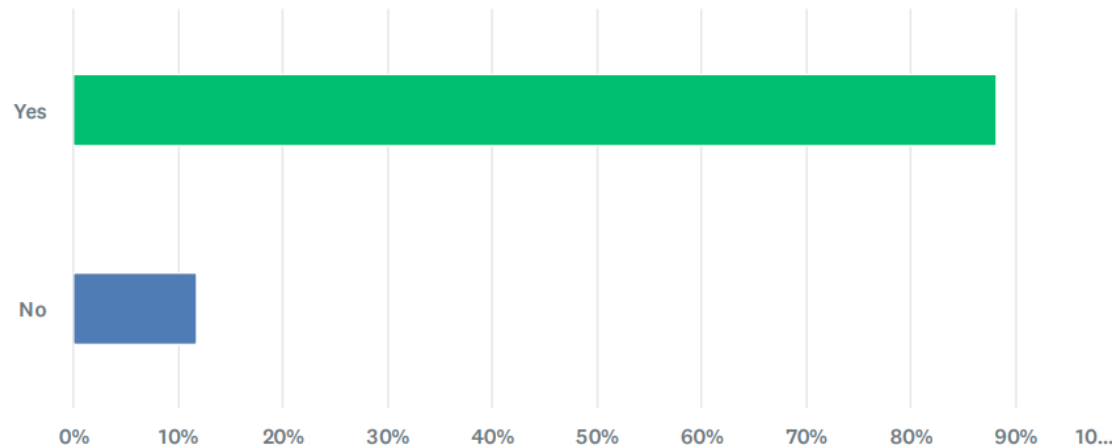
- 52 response from 33 countries



Adoption of the UN-IGIF across Europe

Q7 Is your organisation aware of the United Nations Integrated Geospatial Information Framework (UN-IGIF)

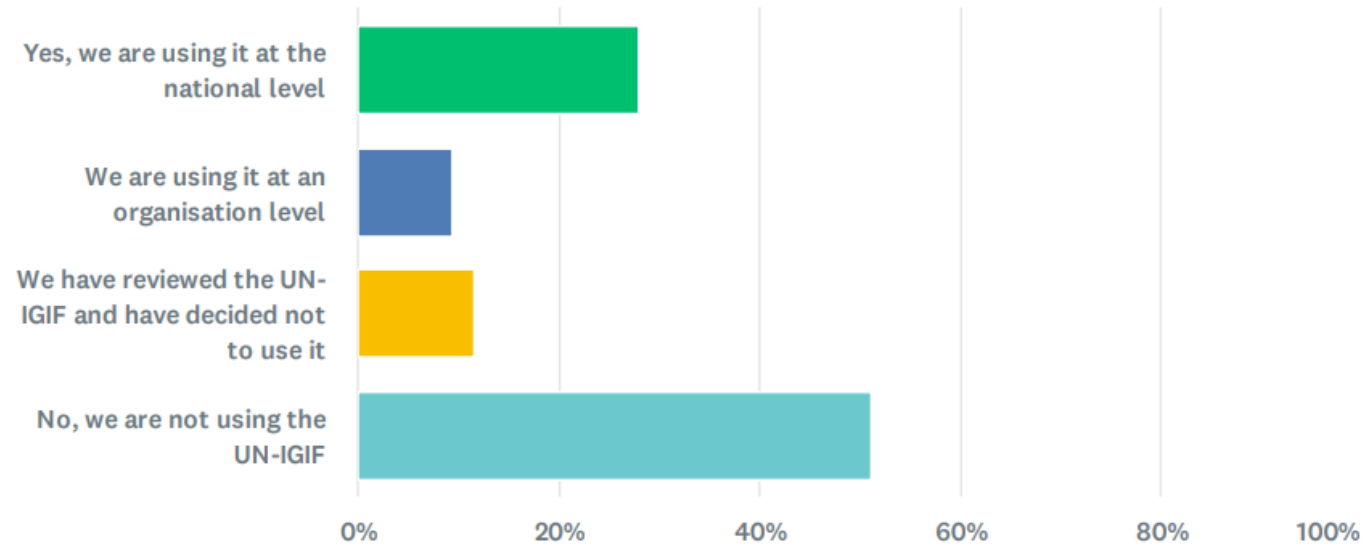
Answered: 51 Skipped: 0



Use of UN-IGIF

Q9 Are you using or implementing the UN-IGIF?

Answered: 43 Skipped: 8



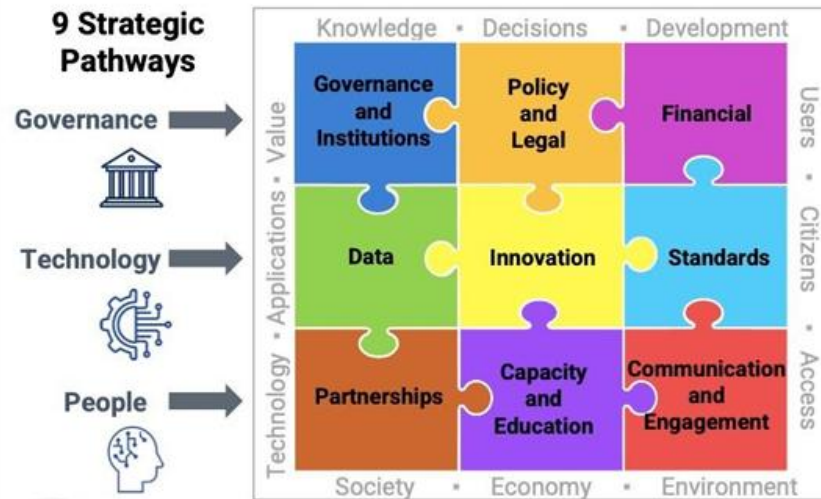
The Framework for Effective Land Administration (FELA)

- Vision – Secured people to land relationships in all forms for the wellbeing of partnerships, planet, prosperity and peace.
- Mission – to provide leadership, coordination and internationally recognised standards, and support responsible innovation and partnerships, for effective land administration to realise sustainable social, environmental and economic development.



UN-IGIF and FELA

Integrated Geospatial Information Framework



- Overarching Framework adopted at 8th Session (2018)
- Implementation Guide 2020 adopted at 10th Session
- 9 Strategic Pathways
- 36 Key Elements
- [IGIF](#)

Framework for Effective Land Administration



- Adopted at 10th Session (2020)
- No Implementation Guide
- 9 Pathways - FELA is fully aligned with the IGIF*
- *I: Accountability; IX: Advocacy and Awareness
- **FELA implements the IGIF for the land sector**
- [FELA](#)

Presented by: Eva-Maria Morscher-Unger, Kadaster, the Netherlands, Unlocking FELA Webinar, July 2025



Call to action

- Visit the UN-GGIM: Europe website for more information.
[Home | UN-GGIM Europe](#)
- For more information about UN-GGIM: Europe's work on UN-IGIF please contact myself of the Secretariat.
- Continue to embed UN-GGIM's frameworks in your national action plans to strengthen capacity development.



Thank you for listening.



UN-GGIM
EUROPE

UNITED NATIONS
COMMITTEE OF EXPERTS ON
GLOBAL GEOSPATIAL
INFORMATION MANAGEMENT

