



The **Council** of European Geodetic Surveyors
Comité de Liaison des Géomètres Européens

CLGE

**CLGE launches EGSAct, a white
paper on Geodetic Surveying in
Europe**

Nele Vanhoutte
nele.vanhoutte@clge.eu

5 – 7 May 2026

PCC Conference PAFOS (CY)



Overview of the presentation

- What is CLGE?
- EGSAct: Professional governance project
- Young surveyor's contest / Photo Contest





CLGE: a definition

“ **Our Mission is** to represent and promote the interests of the geodetic surveying profession in the private and public sector in Europe. ”

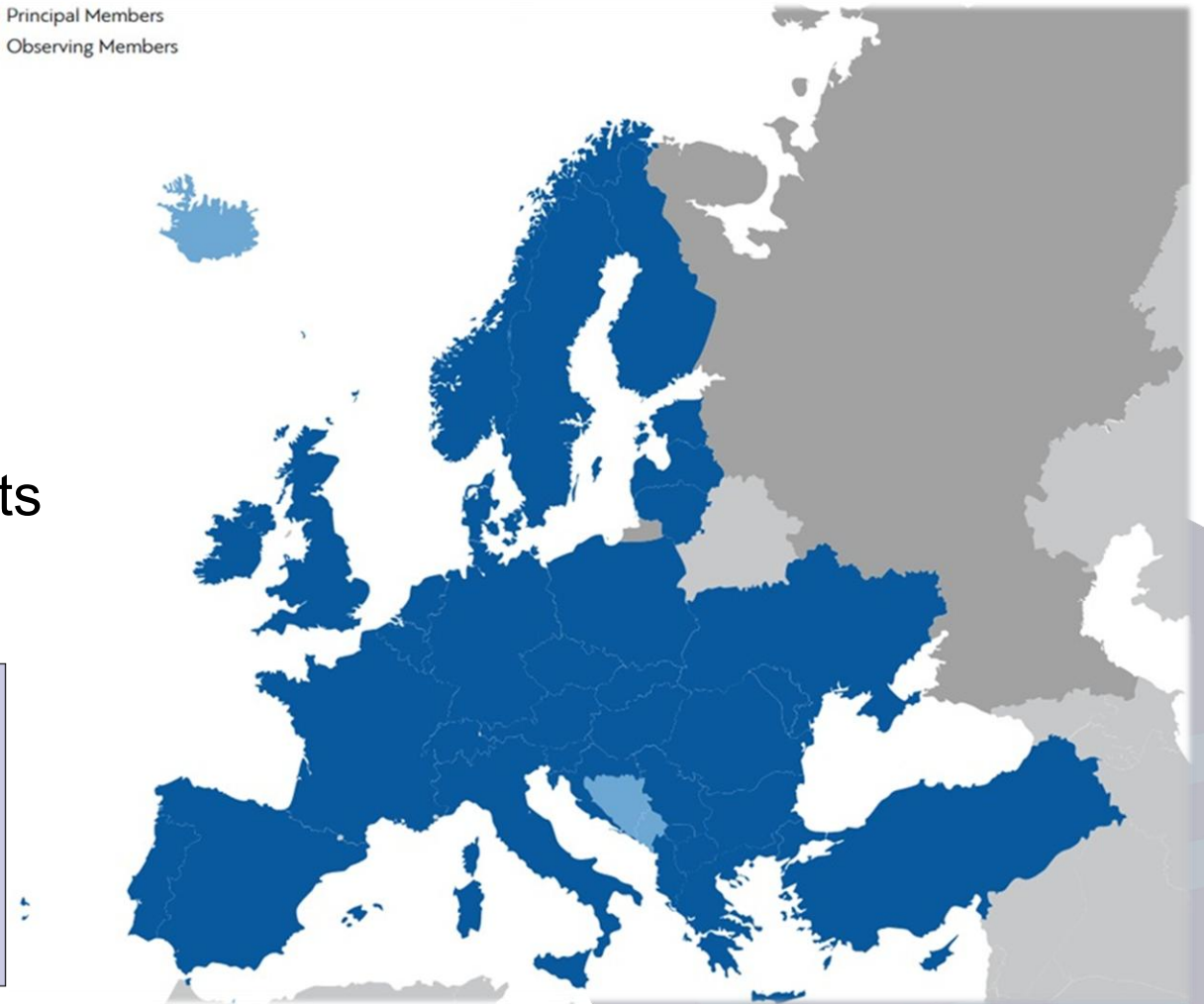
- CLGE is the **leading representative body** for the surveying profession in Europe. It promotes and strengthens the profession within the European Union and supports its development within the Council of Europe.
- Surveying also includes **cadastral surveying**, which ensures legal certainty regarding land ownership and property rights, forming an essential foundation of our economic system.
- In today's world, **geospatial information** is everywhere, and surveyors play a key role in collecting, managing, and safeguarding this information.



Leading Surveyors' Association in Europe

- Since 1962
- 37 Member Countries + 3 Observing
- >> 100.000 Surveyors
- Requires close cooperation
 - FIG
 - EuroGeographics, PCC, CEPLIS, ...
 - National Associations, Regional Events

● Principal Members
● Observing Members

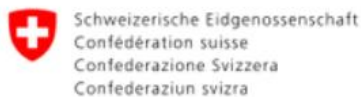


Civil Servants	Publicly Appointed	Regulated Profession	Free Market
----------------	--------------------	----------------------	-------------



The **Council** of European Geodetic Surveyors
Comité de Liaison des Géomètres Européens

Our institutional members





The **Council** of European Geodetic Surveyors

Comité de Liaison des Géomètres Européens

The Professional Governance Project

(White Paper on Geodetic Surveying in Europe)



EGSAct

- European **G**eodetic **S**urveyors' **A**ct
- White Paper on Surveying in Europe (smart Regulation)
 - Sector Study (Facts and Figures about Surveying in Europe)
 - Impact of Surveying (economic, legal and social)
 - CLGE Recommendations for the Future





Goals

- **Externally - Promote the profession**
 - Systematically present the importance of the geodetic surveying profession, its economic, legal, and social impact
 - Future directions for geodetic surveying in Europe - strengthening the role of geodetic surveying in One Europe
- **Internally – CLGE protect from deregulation**
 - Smartly regulated profession
 - Inform drafting of the European Geodetic Surveyors Act

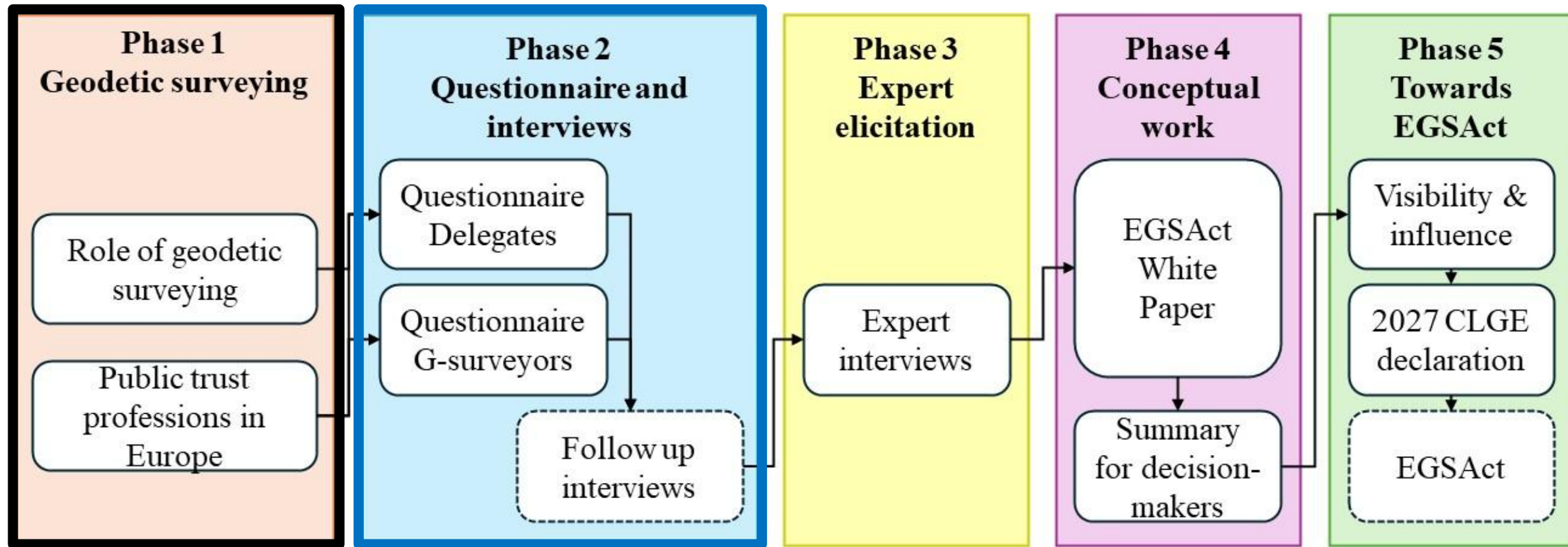


Background

- Dublin – We agreed to proceed with the project
- Scoping the paper for FIG 2026 Congress (Grazyna Wiejak-Roy, Agnieszka Bieda, Matjaž Grilc, Vladimir Krupa, Nicolas Smith and Jean-Yves Pirlot) [The EGSAAct Project – Towards a White Paper on Surveying in Europe](#)
- Sofia Board Meeting – discussion on draft paper (16 Jan 2026)
- IG-PARLS meeting – discussion on progress and questionnaire (20 Mar 2026)



Whole EGSAct project in phases





Role of geodetic surveying

1. Public governance



Accurate spatial data for evidence-based decisions, transparency and effective public services.

2. Land reallocation, use and spatial planning



Boundaries, cadastre and planning data to manage land use, zoning and reallocation equitably.

3. Digital spatial information services



High-quality geospatial data and platforms enabling interoperable digital services and innovation.

4. Economic value of geodetic services



Reliable data reduces costs, creates jobs and supports economic growth and investment.

5. Efficiency of real estate markets



Secure property rights and accurate information increase market efficiency and confidence.

6. Construction, infrastructure and industrial facilities development



Precise measurement and monitoring for safe, efficient design, construction and asset management.

7. Natural environment



Mapping and monitoring ecosystems, resources and climate impacts for sustainable management.

8. Social, health, safety and well-being



Data for healthy communities, accessible spaces and informed policies that improve quality of life.

9. Disaster management



Risk mapping, early warning and rapid assessment to protect lives and assets.

10. Culture and heritage



Documenting, preserving and monitoring cultural heritage for future generations.

11. Tourism



Accurate maps and attractive destinations that enhance visitor experiences and local development.





What others have done in other fields?

European Psychotherapy Act



European Union Standards for Nursing and Midwifery; Delegated Act – proposal



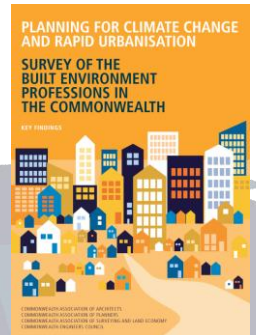
European Council of the Liberal Professions



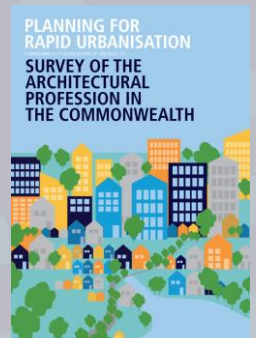
Architects' Council of Europe The Architectural Profession in Europe 2024 Sector Study



Survey of the Built Environment Professions in the Commonwealth 2020



Survey of the Architectural Profession in the Commonwealth 2018





Questionnaire - drafting

Part 1: Respondent profile

Part 2. Education and entry into the profession

Part 3. Skills and future competencies

Part 4. Professional practice and labour market

Part 5: Market demand and clients

Part 6: Technology, data and innovation

Part 7: Public value and societal relevance

Part 8: Sustainability and wider challenges

Part 9: Trust, ethics and public confidence

Part 10: Engagement and promotion

Part 11: Final comments and follow-up

Questionnaire
CLGE delegates

Questionnaire
geodetic surveyors

Next steps:

- Final review
- Signoff



EGSAct project – Next steps

FIG 2026 Congress – plan

- Present paper
- Discuss observations
- Kick off questionnaires





EGSAct project – Next steps - IG PARLS

- Learn from success stories on professional regulation
 - New regulation
 - Belgium (regulations of 2023) – creation of the chamber
 - Czech Republic (regulations of 2023)
 - Romania (regulations of 2024)
 - Resistance from deregulation – Switzerland
- Developing compendia
 - Learn from the success of the condominium and underground cadastre compendia
 - Finish the boundary compendium
 - Finish the governance of profession compendium
- Interviews with experts





The **Council** of European Geodetic Surveyors
Comité de Liaison des Géomètres Européens



Young Surveyors' Contest



Young Surveyor's Contest, what?



- Max. 35 years old
- 2 categories (Master/bachelor thesis AND **projects at company in Geodesy or related fields**)
- Application form (1000 words + max. 5 illustrations)
- Topic of geodesy, cadastre, mapping, geoinformation
- **Deadline 13 July 2026 (23:00 CEST)**
- Announcement of Finalists 17 August 2026
- Online finals 27 August 2026
- Awarding Ceremony during INTERGEO München 16/09/2026



Young Surveyor's Contest, why?



- 1st €1500
2nd €1000
3rd €500



- Awarding ceremony at INTERGEO for free
- CLGE will fund travel and hotel costs
- Fame as a young surveyor, experience, improve CV, meet colleagues, engagement in international activities, ambassador of YSC ...



Gratitude to Ambassadors of the Contest

- Paweł Czernic
- Mar Roca Mora
- Juan Portela
- Miloš Basarić
- Laur Crocetti



Laura Crocetti

PhD in Space Geodesy, Postdoctoral Researcher at Federal Institute of Technology Zurich (ETH), Switzerland

First Prize winner in 2025 for PhD's thesis
"Application of Machine Learning Algorithms for the Detection of Spatio-Temporal Patterns linked to Geophysical Phenomena in GNSS Time Series"

«CLGE Young Surveyors' Contest was a great experience that I wouldn't want to miss. I thoroughly enjoyed presenting my research to a diverse jury and broad audience from both academia and industry. The award gave me the opportunity to reflect on my work and highlight the many possibilities of geospatial research. Visiting INTERGEO and connecting with peers and industry leaders was very inspiring and filled me with joy to be a part of it and to contribute. As I mentioned at the award ceremony: Geodesy is exciting!»



Winners of the Contest



Paweł Czernic

PhD Student at Warsaw University of Technology, Poland
owner of GeoHorizon – a geophysics company, Poland



Mar Roca Mora

PhD Candidate at Spanish National Research Council, Spain



Juan Portela

PhD in Geomatics Engineering (University of Valencia)



Miloš Basarić

Junior Researches at Military Geographical Institute in Belgrade
PhD student of Geoinformatics at the Faculty of Technical Sciences



Laura Crocetti

PhD in Space Geodesy, Postdoctoral Researcher at Federal Institute of Technology Zurich (ETH), Switzerland

First Prize winner in 2025 for PhD's thesis
"Application of Machine Learning Algorithms for the Detection of Spatio-Temporal Patterns linked to Geophysical Phenomena in GNSS Time Series"

«CLGE Young Surveyors' Contest was a great experience that I wouldn't want to miss. I thoroughly enjoyed presenting my research to a diverse jury and broad audience from both academia and industry. The award gave me the opportunity to reflect on my work and highlight the many possibilities of geospatial research. Visiting INTERGEO and connecting with peers and industry leaders was very inspiring and filled me with joy to be a part of it and to contribute. As I mentioned at the award ceremony: Geodesy is exciting!»

- Paweł Czernic
- Mar Roca Mora
- Juan Portela
- Miloš Basarić
- Laura Crocetti



CLGE YS Contest 2025 (13th edition)

- We've got 30 applications
- Statistics by countries:
 - 10 – Germany
 - 5 – Austria
 - 2 – Spain and Poland
 - 2 – France, Bosnia and Herzegovina
 - 1 – North Macedonia, Estonia, Belgium, Switzerland, Italy, Turkiye, Ukraine, Romania and one from joint programme - DE/PT/ES



The Council of European Geodetic Surveyors

Comité de Liaison des Géomètres Européens





Photo Contest

Global Surveyors' day 21 March



MIGUEL

Viaducte dels Masos, Duesaigües (Tarragona). I am taking topographic data of the track during its complete renovation; the tamping machine adjusts the ballast on the historic railway bridge from 1889.



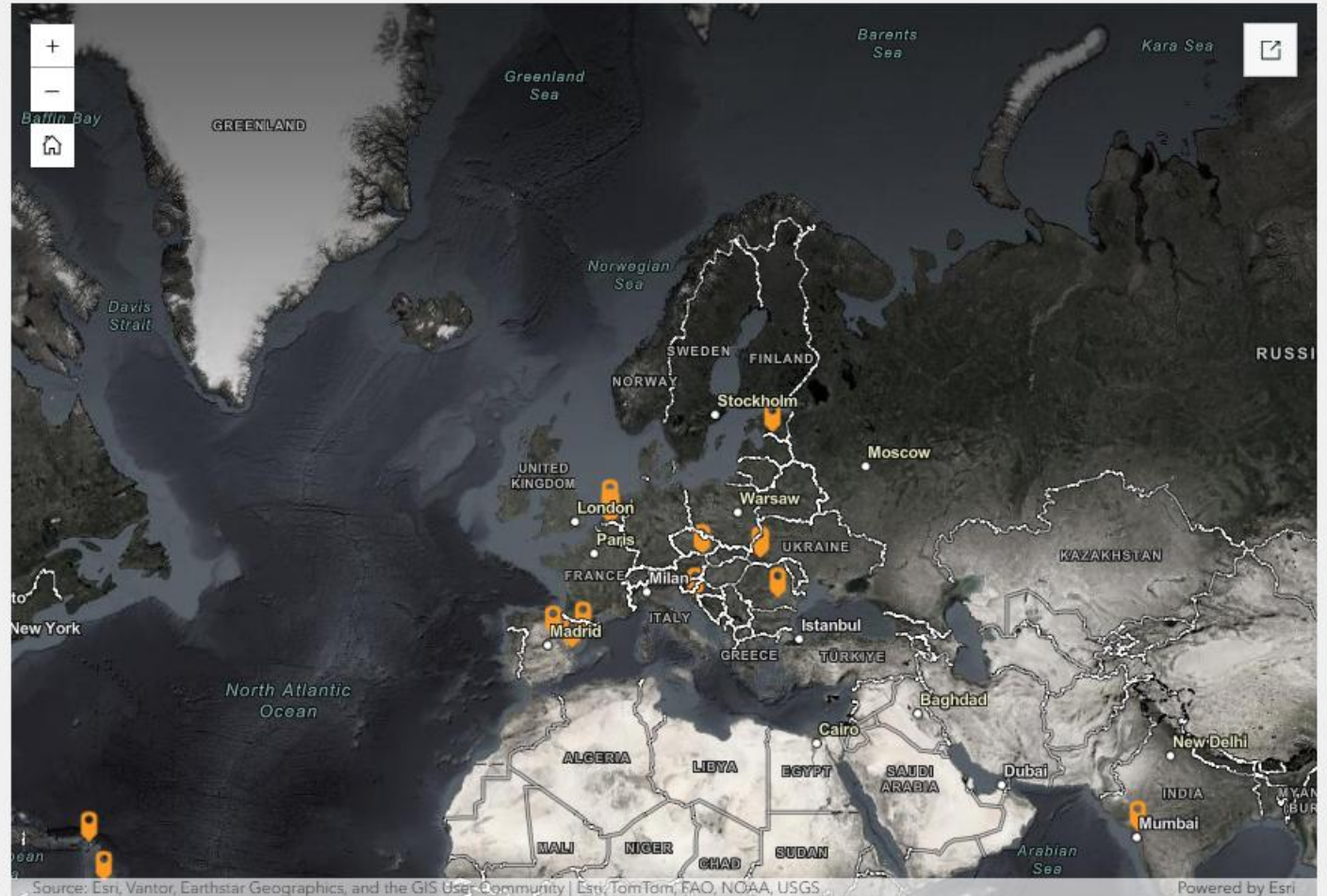
Dionisio Pequeño Vega

Bosque de roble joven en finca particular de Brihuega, Guadalajara, España.
Posicionando hitos y piquetas del cerramiento de una finca.
Escuchando el canto de pájaros, y algún bramido de ciervo.



Laura Becerra

On Saba we measured a resident's land for his property process, enjoying views of The Bottom's houses and Mount Scenery, the highest point in the Kingdom of the Netherlands. It is a dormant volcano.





The **Council** of European Geodetic Surveyors
Comité de Liaison des Géomètres Européens





The **Council** of European Geodetic Surveyors

Comité de Liaison des Géomètres Européens

House of the European Surveyor and GI

Brussels, Rue du Nord 76



Welcome!



The Council of European Geodetic Surveyors
Comité de Liaison des Géomètres Européens

Thank you for your attention

Nele Vanhoutte
nele.vanhoutte@clge.eu