An aerial photograph of a multi-lane highway with several cars. A white geospatial grid is overlaid on the right side of the image, showing a network of lines that form a triangular pattern over a green field and a road. The highway is set against a background of autumn-colored trees and a rocky embankment.

EuroCoreReferenceMap: Building a Sovereign, Future-Ready Geospatial Foundation for Europe

**Sallie Payne Snell
Secretary General and Executive Director**

**Joint PCC & EuroGeographics CLRKEN
Conference and Plenary 5-7 May 2026**

Connecting you to maps, geospatial and land information for Europe



Enabling access to official high-value European geospatial data:
Working with members for the public good



Sharing expertise and best practice in pan-European data production:
Supporting members' ambitions and capacity building



Demonstrating use and value to promote integration of members' data within European and global systems benefiting people and planet:
Representing members' interests.

A society empowered by use of members' trusted geospatial services

A successful shift in strategic focus = more activities and value for members

+ Influence

+ Relevance

+ Visibility

From 2026: A more certain future for authoritative data at pan-European level.



Reputation as enabler allowing easy access to authoritative data.



OME/OME2: Compelling case for pan-European authoritative data



Extensive, expanded programme of knowledge exchange



Euro Core Reference Map (high-value large-scale dataset)

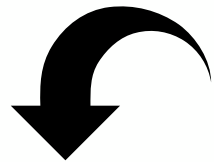
OME2: A foundation for future pan-European high-value datasets

OME2 delivered:

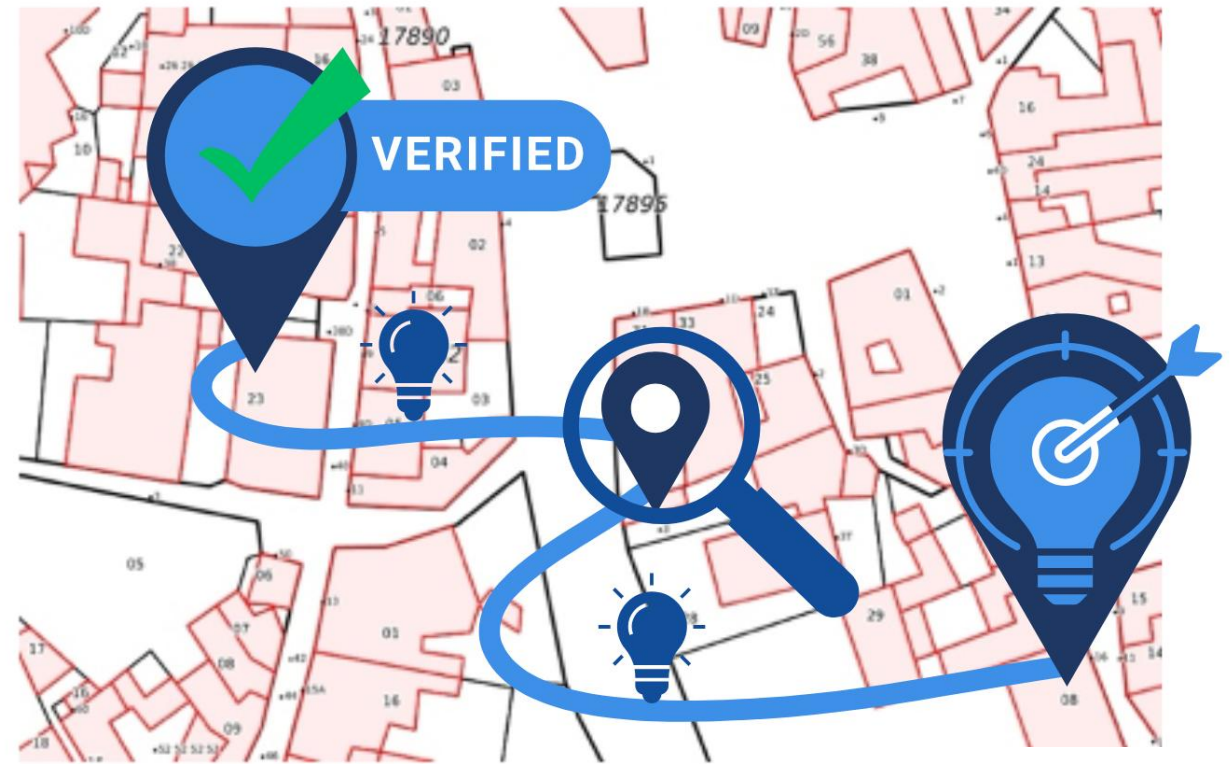
- Enhancements to the five existing Open Maps For Europe datasets, including the pilot Open Cadastral Map with increased coverage of 15 countries
- A new production process and technical specification for free-to-use-high-value data from multiple European countries under a single open licence.
- A high-value large-scale prototype dataset covering 10 countries.
- Infrastructure, process and tools as to achieve the long-term sustainability of authoritative pan-European geospatial data.

Geospatial data – one of Europe’s most valuable resources

Context + Clarity = Connections



Decisive action
Maximum impact



OME2  Co-funded by
the European Union

Digital Europe Programme
Grant Agreement No 101100625

Official geospatial data – one of Europe’s most trusted resources

Geospatial data delivered by National Mapping, Cadastral and Land Registration Authorities:

- High-value with its origin and sovereignty in Europe
- Important enabler of cross-border applications
- Offers a wealth of opportunities for reuse due to its compatibility with other datasets

An essential component of national, European and global critical infrastructure.

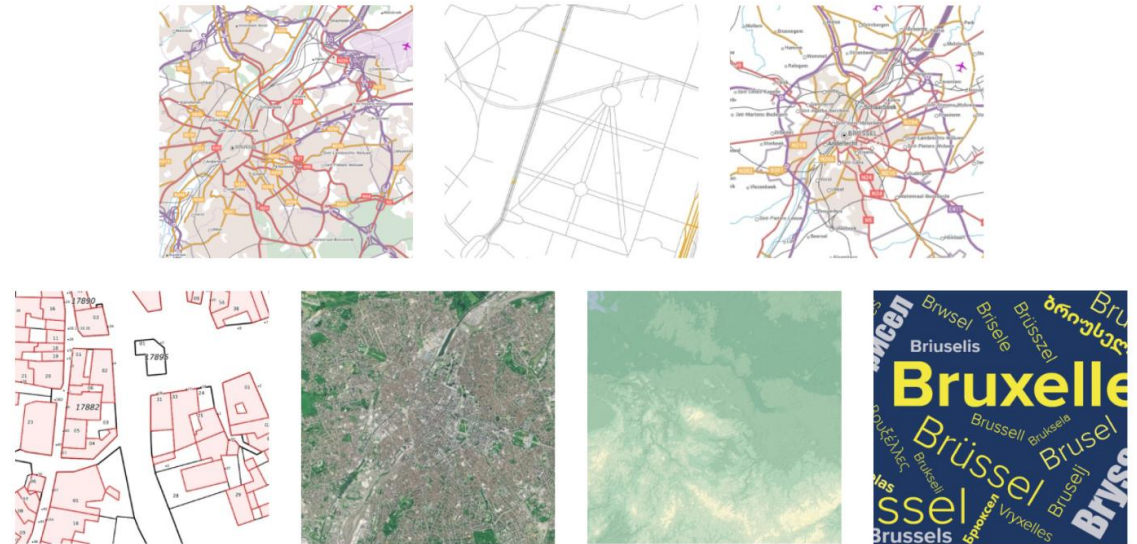
OME2  Co-funded by the European Union

Digital Europe Programme
Grant Agreement No 101100625

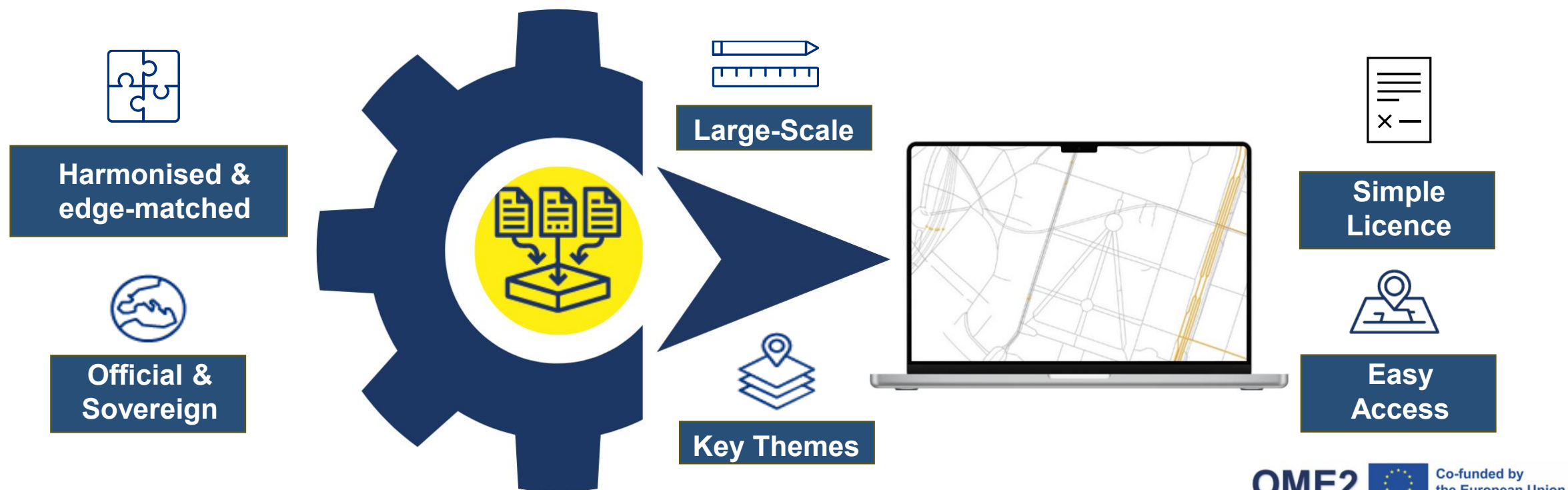
OME2: Turns EU rules for high-value geospatial information into a cross-border data solution



- Rules on High-Value Data
- Open Data Directive
- EU Data Strategy - Data Spaces
- INSPIRE Directive
- UNGGIM: Europe Core Data Recommendations

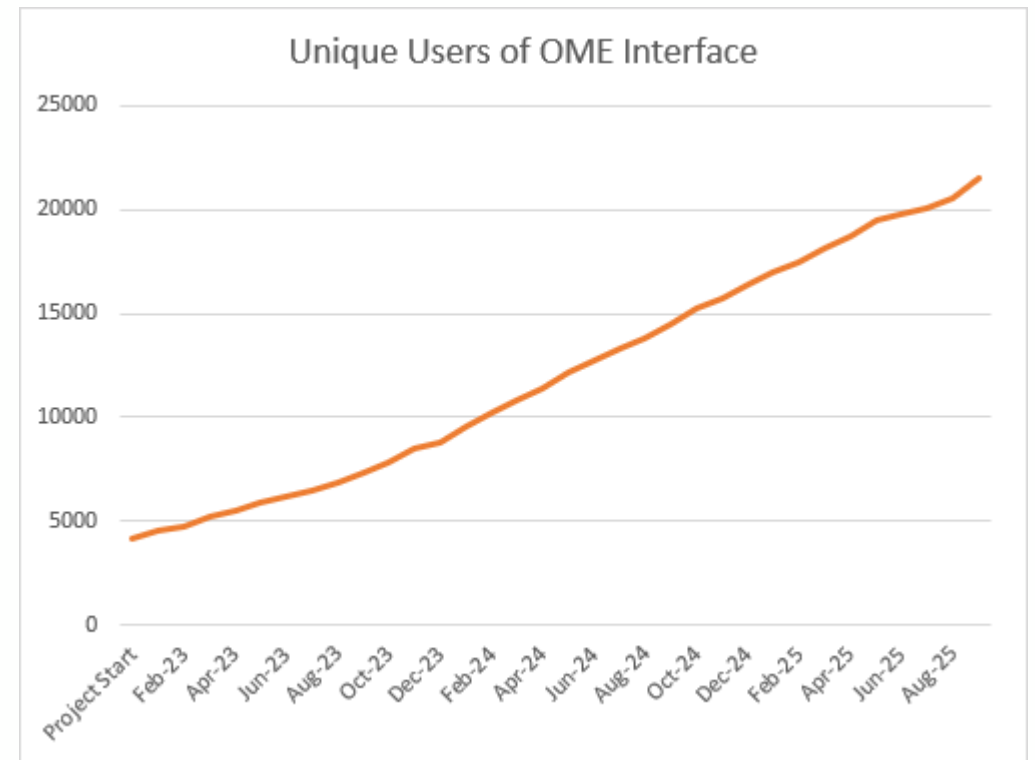


OME2: Solves complex challenge of delivering usable sovereign pan-European data through collective action



OME2: A foundation for future pan-European high-value datasets

- Proves EuroGeographics and its members can deliver large-scale edge-matched data.
- Provides a practical demonstration of the benefits of harmonised national data.
- Demonstrates demand for edge-matched data with higher-than-expected user numbers.
- Enhances Open Cadastral Map and establishes a vision for the future.



OME2 High-Value Large-Scale Prototype



Streamlined access to harmonised, authoritative geospatial data



Large-scale authoritative administrative boundary, transport network & hydrography data



Innovation in data access, integration, and harmonisation



EU 27 Coverage

EuroCoreReferenceMap

A one-of-kind dataset with a unique proposition

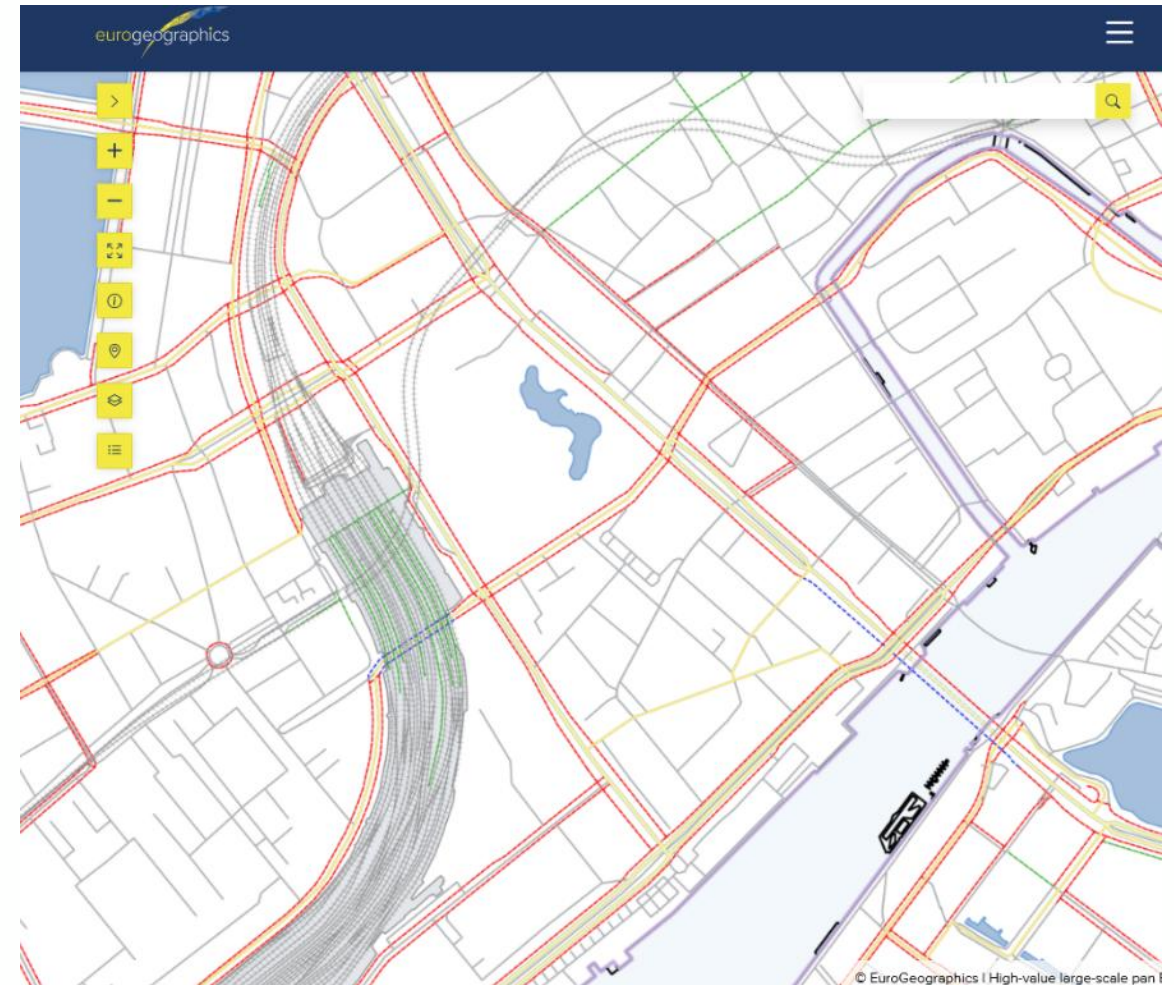
The **only high-value large-scale pan-European** dataset:

- Developed through a **unique production process underpinned by national expertise** in integration of core geospatial data.
- Created using **authoritative national data and offering initial EU27+CH coverage** with a vision to use data from all members.
- **Harmonised and edge-matched** to deliver the data that users have said they need and want: administrative boundary, transport network, hydrography.
- **Licensed to end users** to enable as much coverage and data inclusion as possible

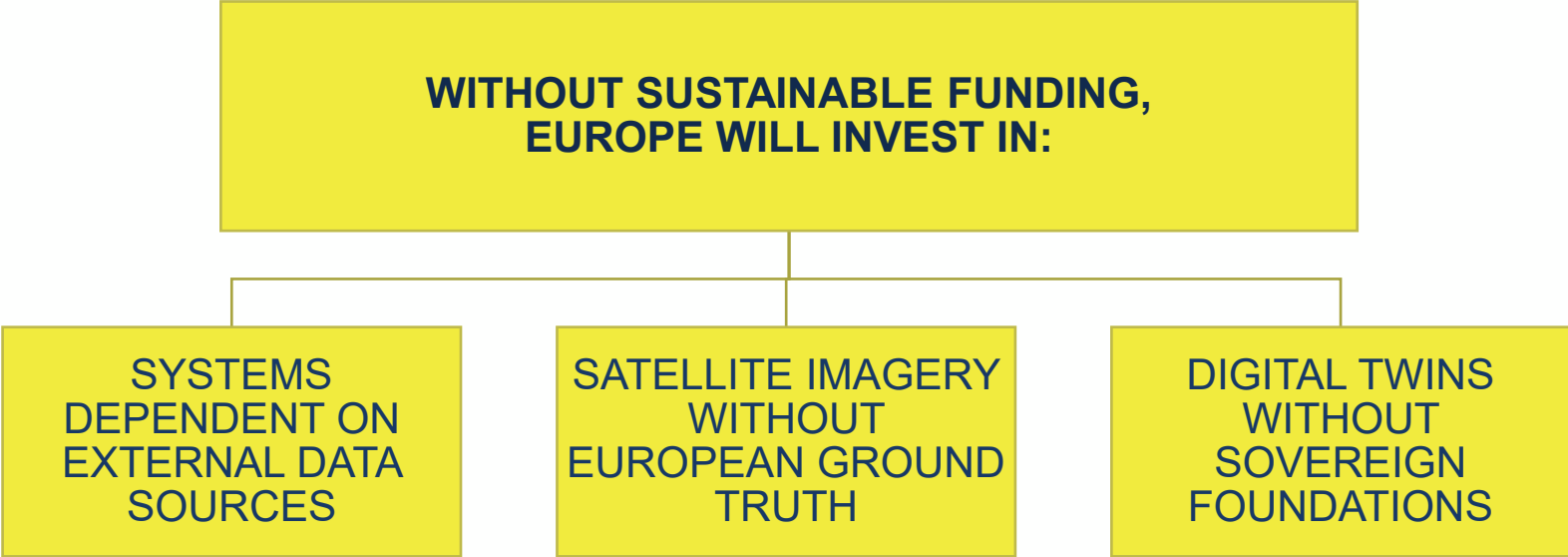
Vision for ECRM

Euro Core Reference Map (ECRM):
Creating a new authoritative foundation for
cross-border applications in Europe

- **Pan-European coverage (EU27 + X):** harmonised and edge-matched data across national borders
- **Large-scale (~1:10 000):** consistent high-resolution topographic information
- **Authoritative data:** trusted official sources from national mapping agencies
- **3 themes:** Admin, Hydro and Trans



BUT we need sustainable funding from EU users to ensure long-term availability



AND THE RETURN AND VALUE OF PREVIOUS EU INVESTMENTS IN SOVEREIGN PAN-EUROPEAN DATA WILL BE DIMINISHED

EuroGeographics Representation Objectives

Visibility

Increasing the visibility and relevance of members' authoritative geospatial data

increasing the visibility and relevance of members' authoritative geospatial data - an enabler for achieving the other two objectives



Sustainability

Securing long-term funding for European geospatial data

Geospatial infrastructure funding included in the next MFF 2028-2034, ensuring dedicated and sustainable resources for pan-European authoritative geospatial data

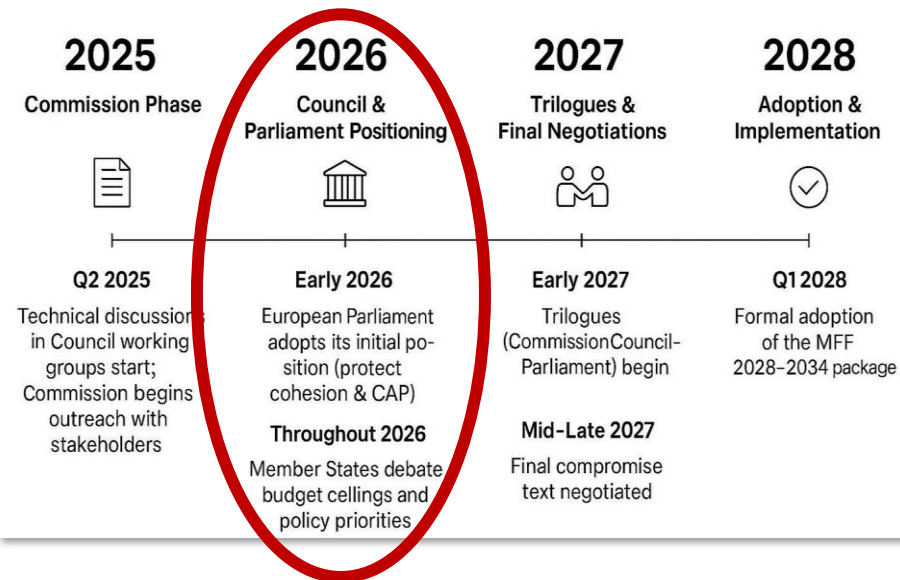
Policy Ownership

Establishing policy ownership of geospatial within Europe

Responsibility for geospatial policy explicitly referenced in a Commissioner's mission letter in the next European Commission 2029 - 2034 mandate

Inserting geospatial in the Multiannual Financial Framework

MFF 2028–2034 Negotiations Timeline
(Key Facts)



Case for the strategic investment of less than 1% of the €175+ MFF budget earmarked for data infrastructure to:

- **Guarantee long-term availability** of foundational geospatial data for Earth observation, digital services, and statistics.
- **Secure sustainable funding** for sovereign data to ensure a self-sufficient, resilient, competitive Europe.
- **Establish an EU policy home** to ensure Europe's digital backbone is built on European data.

Comprehensive policy framework for core geospatial data in the EU

Tender Issued by DG-DEFIS

- 18 month Contract of a value of up to €2M - Closed 2 March 2026
- General Objective
 - To provide the European Commission with a detailed analysis and actionable recommendations for establishing a **comprehensive framework for core geospatial information from authoritative sources across the EU.***
- Indicates that the solutions should revolve around three pivots:
 1. technology-centred,
 2. governance-based, or
 3. legal change option

This is a direct result of our OME2 event in Strasbourg in October 2023
EuroGeographics and NMCAs named as entities to be consulted in the study.





Questions?

sallie.payne@eurogeographics.org