

Improving the Usability of Geospatial Data

14th June 2017



Other industries – how have they made it easier to choose?



Food industry



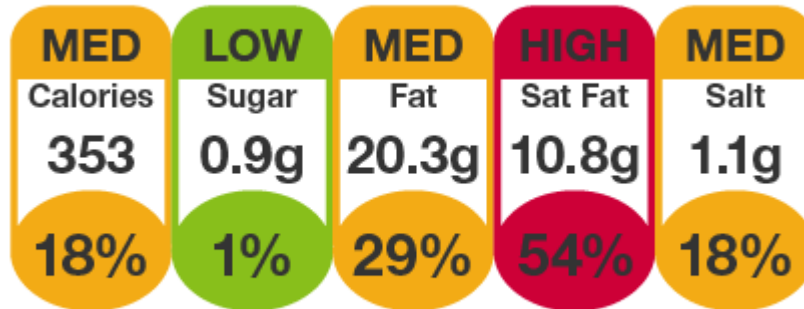
EuroGeographics

CONNECTING YOU TO THE
**AUTHORITATIVE GEO-INFORMATION
FRAMEWORK** FOR EUROPE



Food industry

Each 1/2 pack serving contains



of your guideline daily amount

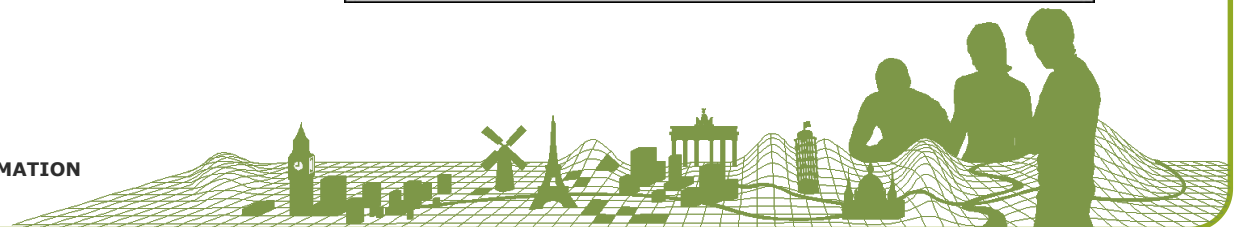
Source: Food Standards Agency

Nutrition

Typical values	100g contains	Each slice (typically 44g) contains	% RI*	RI* for an average adult
Energy	985kJ 235kcal	435kJ 105kcal		8400kJ 2000kcal
Fat	1.5g	0.7g	1%	70g
of which saturates	0.3g	0.1g	1%	20g
Carbohydrate	45.5g	20.0g		
of which sugars	3.8g	1.7g	2%	90g
Fibre	2.8g	1.2g		
Protein	7.7g	3.4g		
Salt	1.0g	0.4g	7%	6g

This pack contains 16 servings


*Reference intake of an average adult (8400kJ / 2000kcal)



Electrical Appliances



Energy		Fridge-Freezer
Manufacturer		
Model		
More efficient		A
A		
B		
C		
D		
E		
F		
G		Less efficient
Energy consumption kWh/year <small>(Based on standard test results for 24h)</small>		325
<small>Actual consumption will depend on how the appliance is used and where it is located</small>		
Fresh food volume l		190
Frozen food volume l		126

Noise (dB(A) re 1 pW)		
<small>Further information is contained in product brochures</small>		
<small>Norm EN 153 May 1990 Refrigerator Label Directive 94/2/EC</small>		



CONNECTING YOU TO THE
**AUTHORITATIVE GEO-INFORMATION
FRAMEWORK** FOR EUROPE

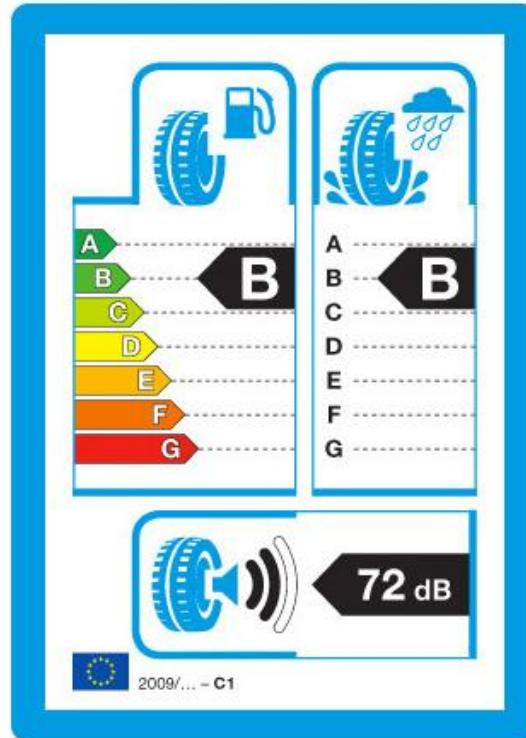


Tyres



Fuel efficiency

- The energy lost when a tyre is rolling is expressed as 'rolling resistance'
- Lower rolling resistance reduces fuel consumption and CO2 emissions
- A is the highest performance tyre
- G is currently the least performing



wet grip

- Provides you with information on the tyre's grip on wet roads
- Tyres with excellent grip in the wet have shorter braking distances on wet roads
- A indicates the highest wet grip performance
- G indicates the lowest wet grip performance

Noise levels

- The tyre's exterior noise grading is expressed in decibels
- One black wave indicates the best noise level – at least 3dB below the future legal limit
- Three black waves indicate the weakest performance
- New legal noise limits will be introduced between 2012 and 2016



Fire doors



Water efficiency rating



CONNECTING YOU TO THE
**AUTHORITATIVE GEO-INFORMATION
FRAMEWORK** FOR EUROPE



Farms

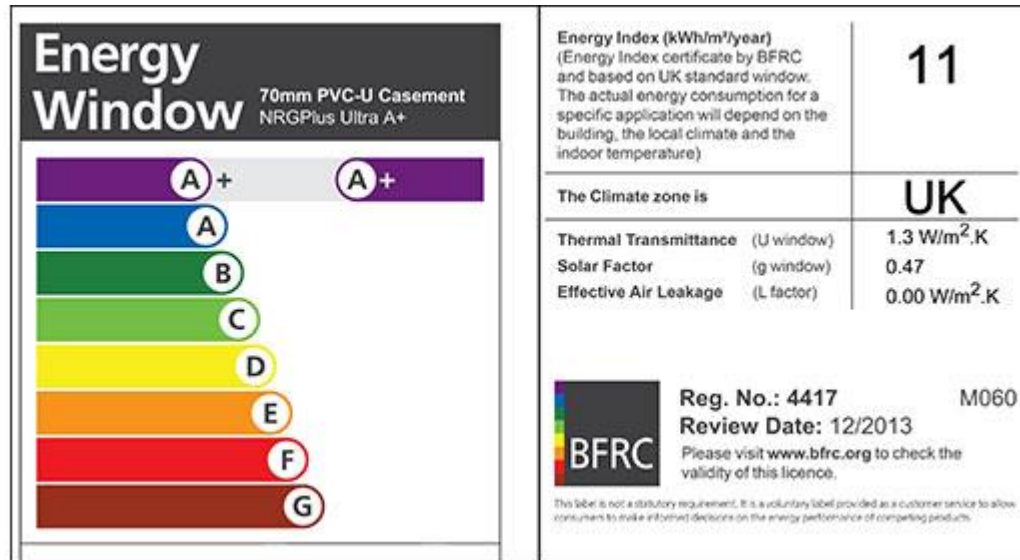
Get to know our **RESPONSIBLY GROWN RATING SYSTEM**



These ratings are based on standards you won't find anywhere else. In order to earn a Good rating, a farm must take major steps to protect human health and the environment. A Better rating indicates advanced performance, and a Best rating indicates exceptional, industry-leading performance.



Windows



CONNECTING YOU TO THE
**AUTHORITATIVE GEO-INFORMATION
 FRAMEWORK** FOR EUROPE



Drill bits



MAKITA PERFORMANCE MASONRY DRILL BIT SET 5 PIECE SET (5576R)



[\(Write a review\)](#) [ask a question.](#)

High quality drill bits with tungsten carbide tips. Suitable for use in percussion drills in brick, stone, block and light concrete.

- Tungsten Carbide Tip

[More Info](#)



Data

- `<gml:Point gml:id="osgb4000000073420692_geom-0" srsName="urn:ogc:def:crs:EPSG::27700" srsDimension="2">`
- `<gml:pos>453737.19 1204109.79</gml:pos>`
- `</gml:Point>`
- `</os:geometry>`
- `<os:toid>osgb4000000073420692</os:toid>`
- `<os:version>1</os:version>`
- `<os:versionDate>2016-06-21</os:versionDate>`
- `<os:reasonForChange>New</os:reasonForChange>`
- `<os:refToFunctionalSite>osgb4000000073338312</os:refToFunctionalSite>`
- `<os:accessType>Motor Vehicles,Pedestrian</os:accessType>`
- `<os:refToRoutingPoint>osgb4000000073943106</os:refToRoutingPoint>`
- `<os:natureOfAccess>Unknown</os:natureOfAccess>`
- `</os:AccessPoint>`
- `</os:featureMember>`
- `<os:featureMember>`
- `<os:RoutingPoint gml:id="osgb4000000073943106_geom-0" srsName="urn:ogc:def:crs:EPSG::27700" srsDimension="2">`
- `<os:geometry>`
- `<gml:Point gml:id="osgb4000000073943106_geom-0" srsName="urn:ogc:def:crs:EPSG::27700" srsDimension="2">`
- `<gml:pos>453737.80 1204107.47</gml:pos>`
- `</gml:Point>`
- `</os:geometry>`
- `<os:toid>osgb4000000073943106</os:toid>`
- `<os:version>1</os:version>`
- `<os:versionDate>2016-06-21</os:versionDate>`
- `<os:reasonForChange>New</os:reasonForChange>`
- `<os:refToITNRoadLink>osgb4000000003210873</os:refToITNRoadLink>`
- `<os:itnRoadLinkVersionDate>2009-06-05</os:itnRoadLinkVersionDate>`
- `<os:startDistance>46.3</os:startDistance>`



Lunch



Breakout sessions

- Group 1 - Hamble
 - Carol Agius
 - Roger Longhorn
 - Rachel Carter
 - Nicola Ferre
 - Claire Ellul
 - Nikolaos Papapesios
 - Gunhild Lönnberg
 - Simona Bunea
 - Margarita Dogaru
 - Jonathan Sloan
 - Carol Hrynkiewicz
 - Jason King



Breakout sessions

- Group 2 - Here
 - Jonathan Holmes
 - Aidan Burke
 - Raul Molina
 - Fabian Koenig
 - Torsten Svärd
 - Jenny Vennberg Larson
 - Vera Djepa
 - Jon Arne Trollvik
 - Peter Hallahan
 - Mark Rogers
 - Simon McLellan
 - Abigail Page



Breakout sessions

- Group 3 - Itchen
 - Maria Pla
 - Dolors Barrot
 - Gerard O'Keeffe
 - Edward Mainwaring
 - Ian Holt
 - Olukemi Olowofoyeku
 - Erwin Kruck, Dr.
 - Ray Patrucco
 - Richard Duffield
 - Eszter Kiss
 - Stéphane Garcia
 - Alicja Karpinska



Coffee

Please remember to book taxis

