



ELF EUROPEAN
LOCATION
FRAMEWORK

EuroDEM and the EuroDEM30 prototype

Presentation to: INSPIRE KEN workshop

By: Saulius Urbanas (EuroGeographics); Sebastian Lass (BKG, DE)

Date: 29 September 2015



EuroDEM product

- 8 – 10m vertical accuracy
- 2 arc seconds grid width
- Grid – 60m
- CRS: ETRS89, EVRS
- 40 countries
- Delivery formats:
 - ★ ESRI Grid, ESRI Grid ASCII, GeoTIFF, XYZ ASCII



- Pilot for production of DEM30 based on the requirements of EuroControl (TOD - Terrain and Obstacle Data): DE, PL, CZ

	Area 1	Area 2	Area 3	Area 4
<i>Post spacing</i>	3 arc seconds (approx. 90 m)	1 arc second (approx. 30 m)	0.6 arc seconds (approx. 20 m)	0.3 arc seconds (approx. 9 m)
<i>Vertical accuracy</i>	30 m	3 m	0.5 m	1 m
<i>Vertical resolution</i>	1 m	0.1 m	0.01 m	0.1 m
<i>Horizontal accuracy</i>	50 m	5 m	0.5 m	2.5 m
<i>Confidence level</i>	90%	90%	90%	90%



Description of the dataset

- Pan-European Digital Terrain Modell with a grid width of 1 arc second
- Successor to EuroGeographics' EuroDEM (2 arc seconds)
- Pilot dataset contains data from Germany, Poland and a 20km strip of Czech Republic at the borders
- Produced in cooperation with NMCA's
- Seamless dataset which was harmonised at the country borders



Technical Specifications

- Raster data
- ‚Bare earth‘ heights
- Heights were derived by Laserscanning and Stereo-Photogrammetry
- Grid width 1 arc second → ~30m in meridian direction
- 1 – 3 meters vertical accuracy
- Geodetic Datum: ETRS89
- Vertical Datum: EVRS
- File Formats: ESRI Grid, ESRI Grid ASCII, ASCII XYZ

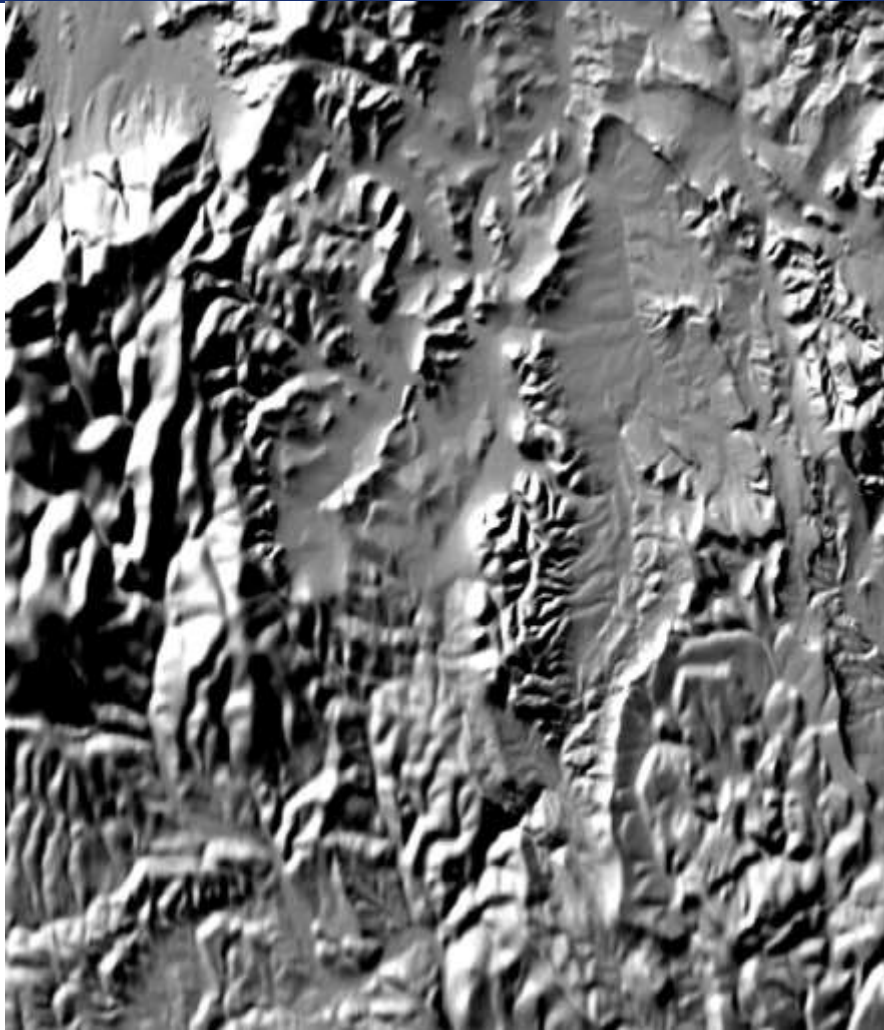


Germany

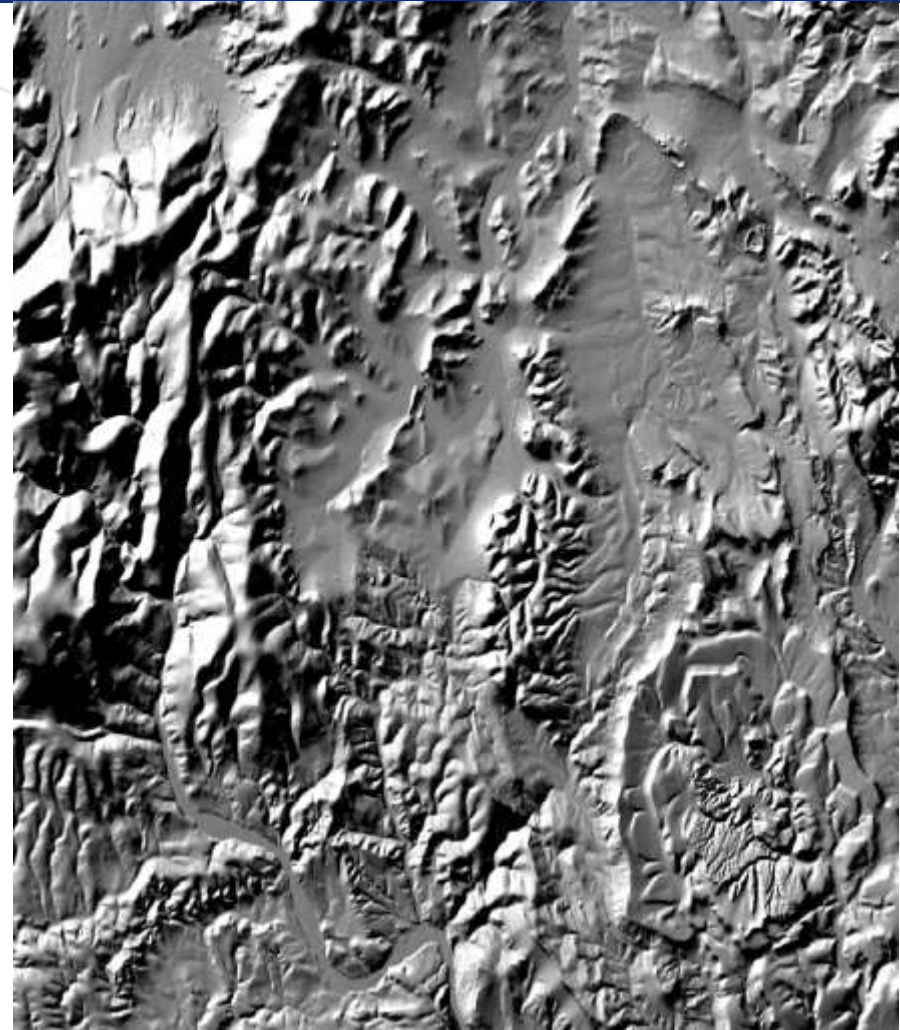
Poland

Czech Republic

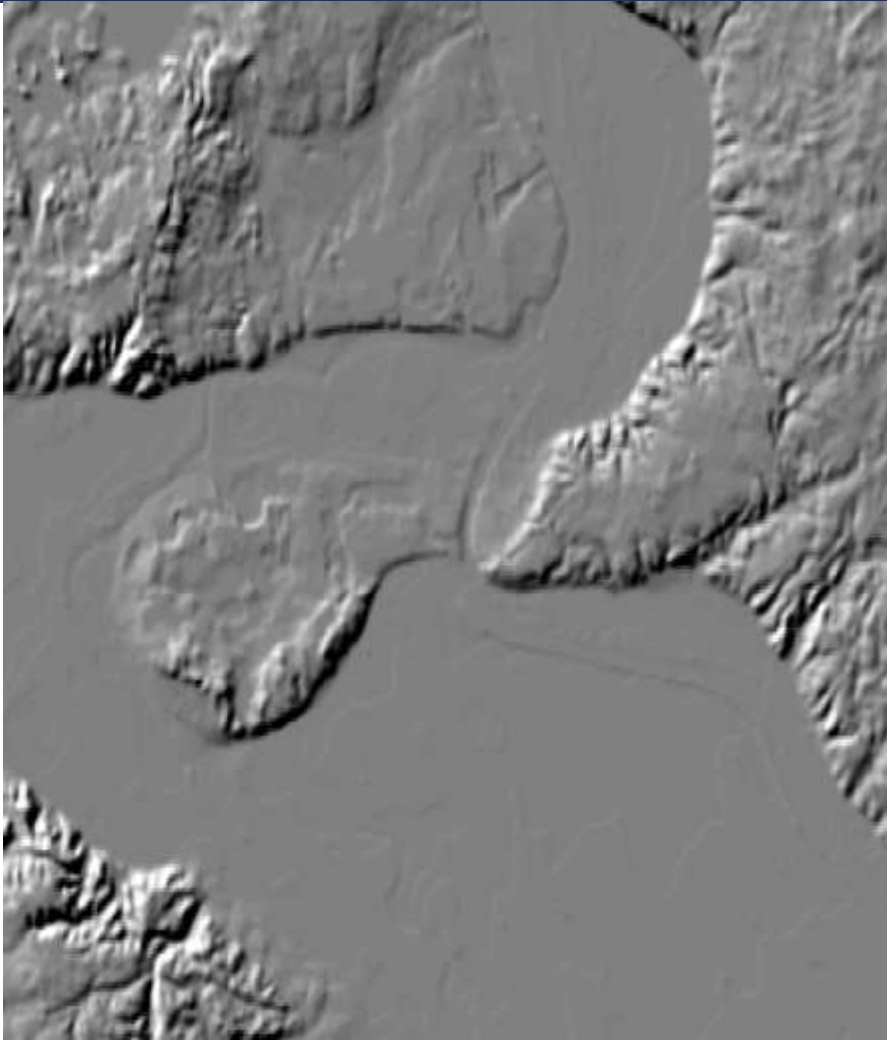




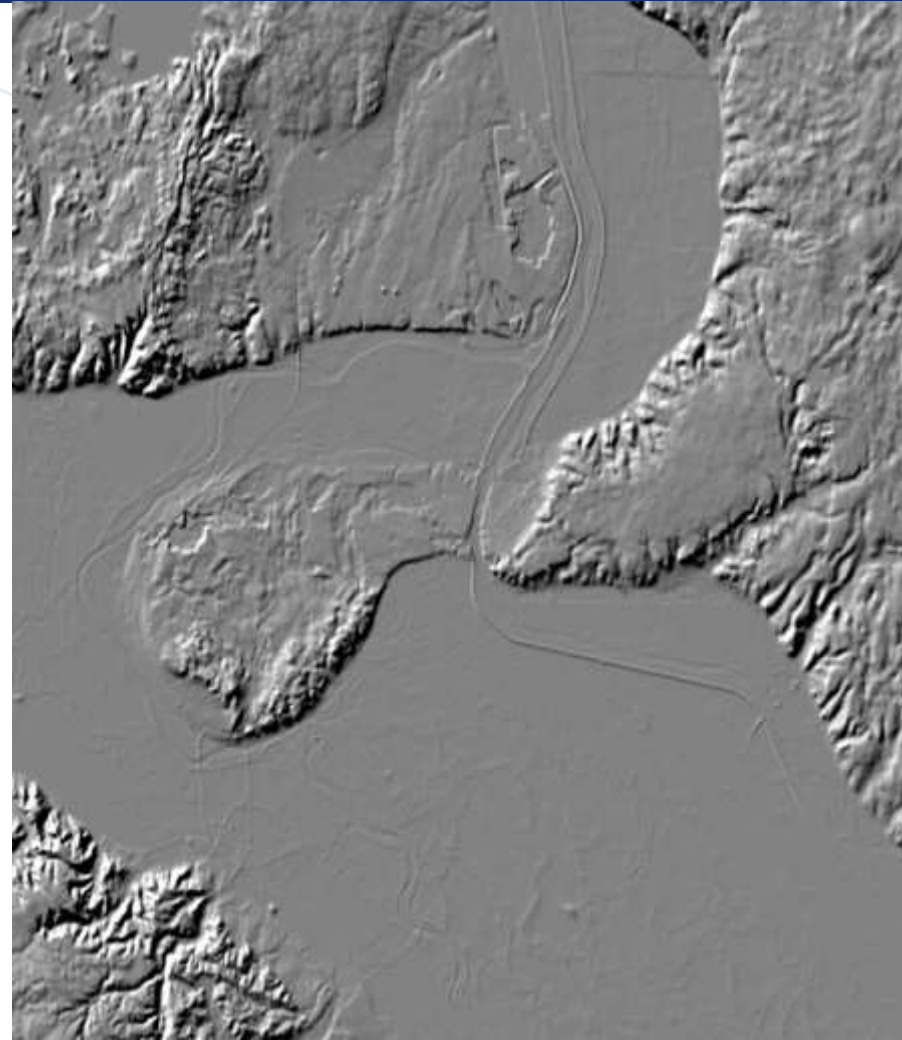
EuroDEM



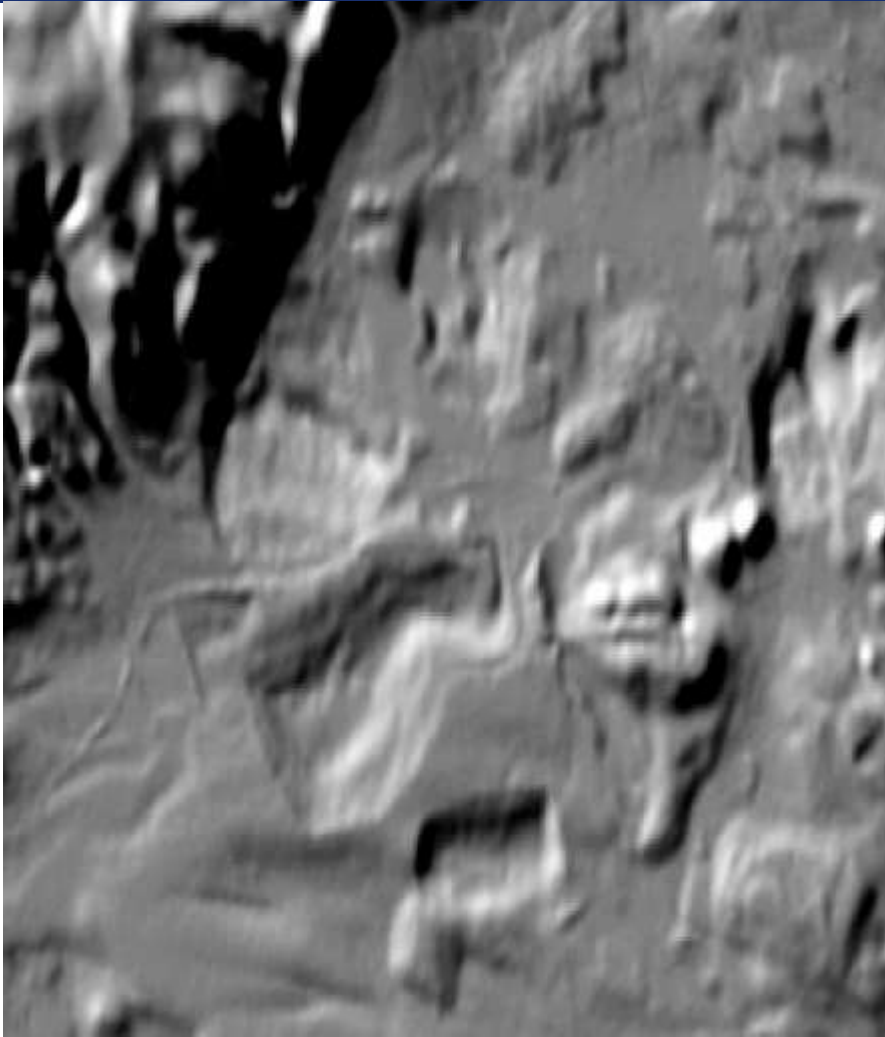
EuroDEM30



EuroDEM



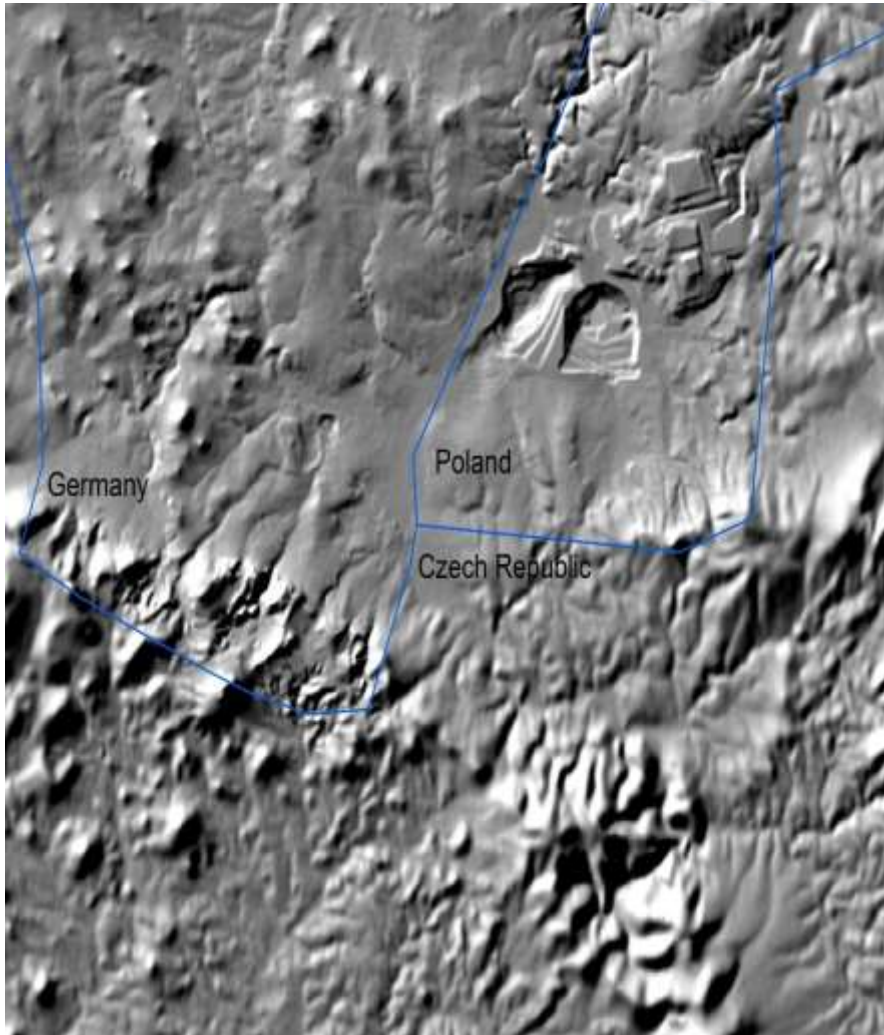
EuroDEM30



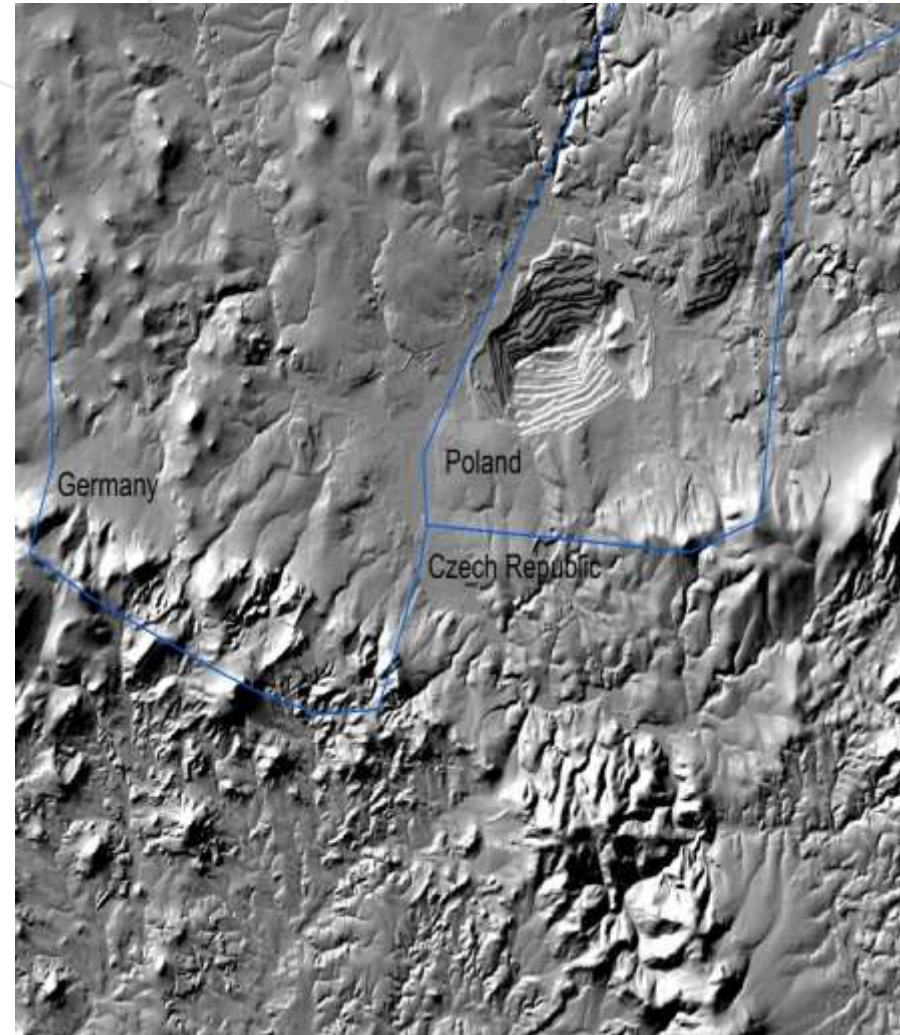
EuroDEM



EuroDEM30



EuroDEM



EuroDEM30

Meeting in EuroControl, 23rd Sept 2015

- **Positive appreciation – “mapping is not our primary business!”**
- **Interest to test the prototype by EuroControl and its partners**
 - ★ **Airbus Helicopters**
 - ★ **Jeppesen**
 - ★ **Lufthansa Systems**
 - ★ **Navtech**
- **Tests on the ground and in the air**