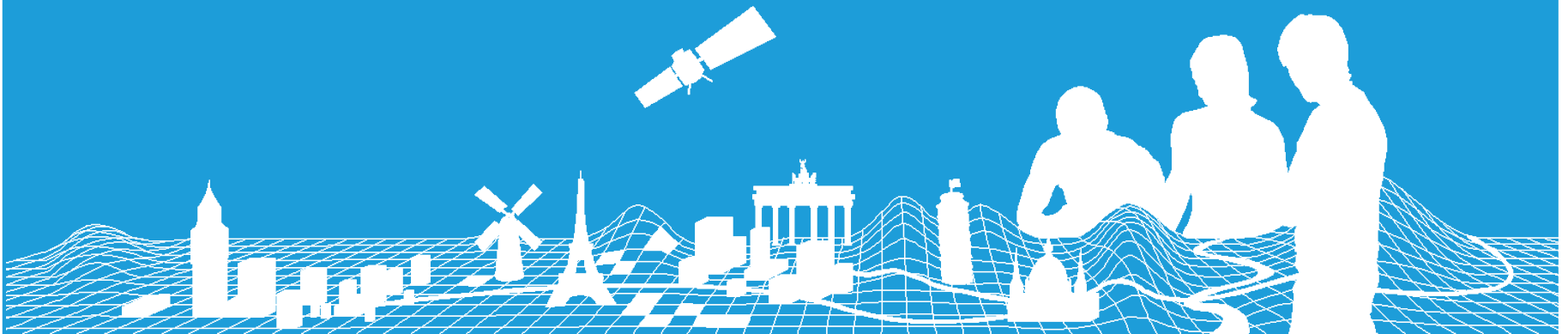


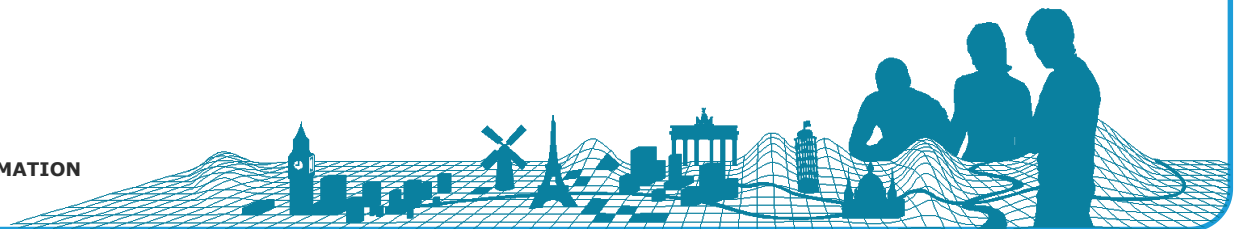
Production 2017/2018 EBM and ERM

Jörgen Spradau and Regine Elling, BKG
EG Producer Meeting, Lisbon
14th/15th November 2017



Content

- Eurostat update programme
- Status of production year 2017
- Production EBM and ERM 2018
- International Boundary

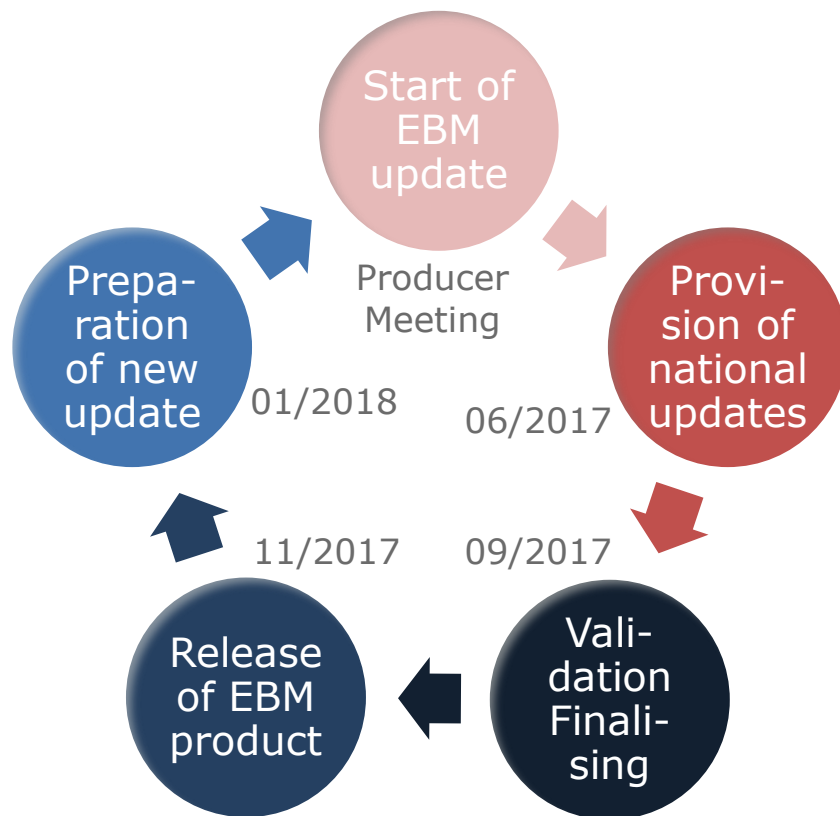


Update programme (Eurostat contract)

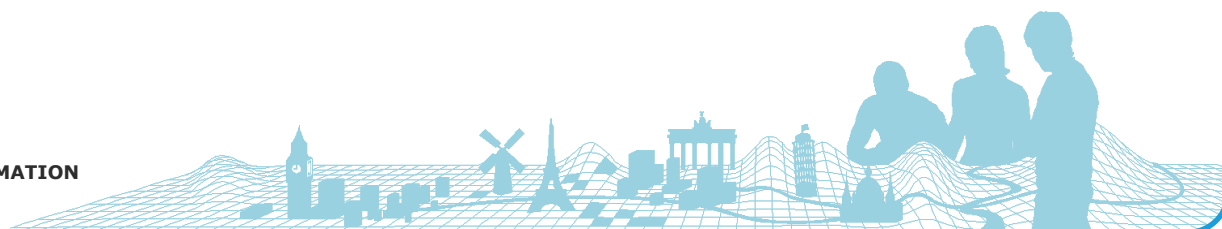
Production year		2015	2016	2017	2018
Delivery to Eurostat		Jan 2016	Jan 2017	Jan 2018	Jan 2019
EBM Version		10.0/10.1	11.0/11.1	12.0/12.1	13/13.1
ERM Version		9.0/9.1	10.0/10.1	11.0/11.1	12.0/12.1
ERM themes	BND	BND	BND	BND	BND
	HYDRO	HYDRO		HYDRO	
	TRANS		TRANS		TRANS
	POP		POP		POP
	MISC			MISC	
	NAME			NAME	
	VEG				VEG



EBM v12

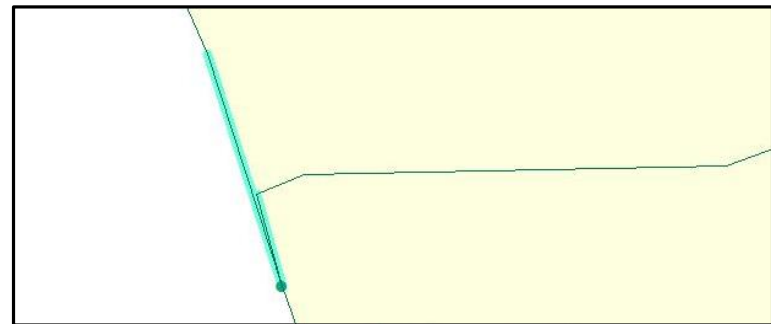


Reference date:
01.01.2017

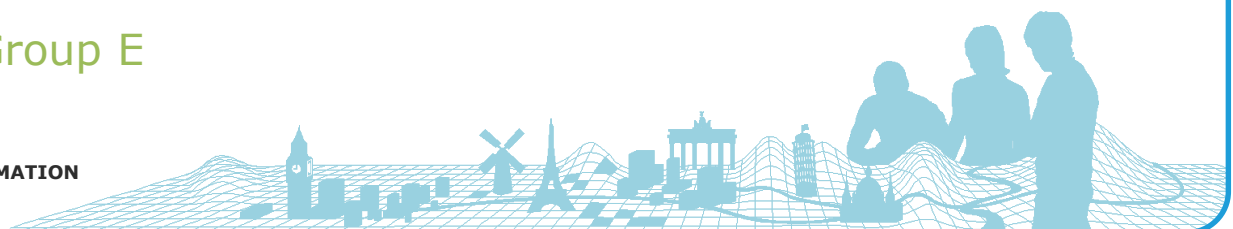
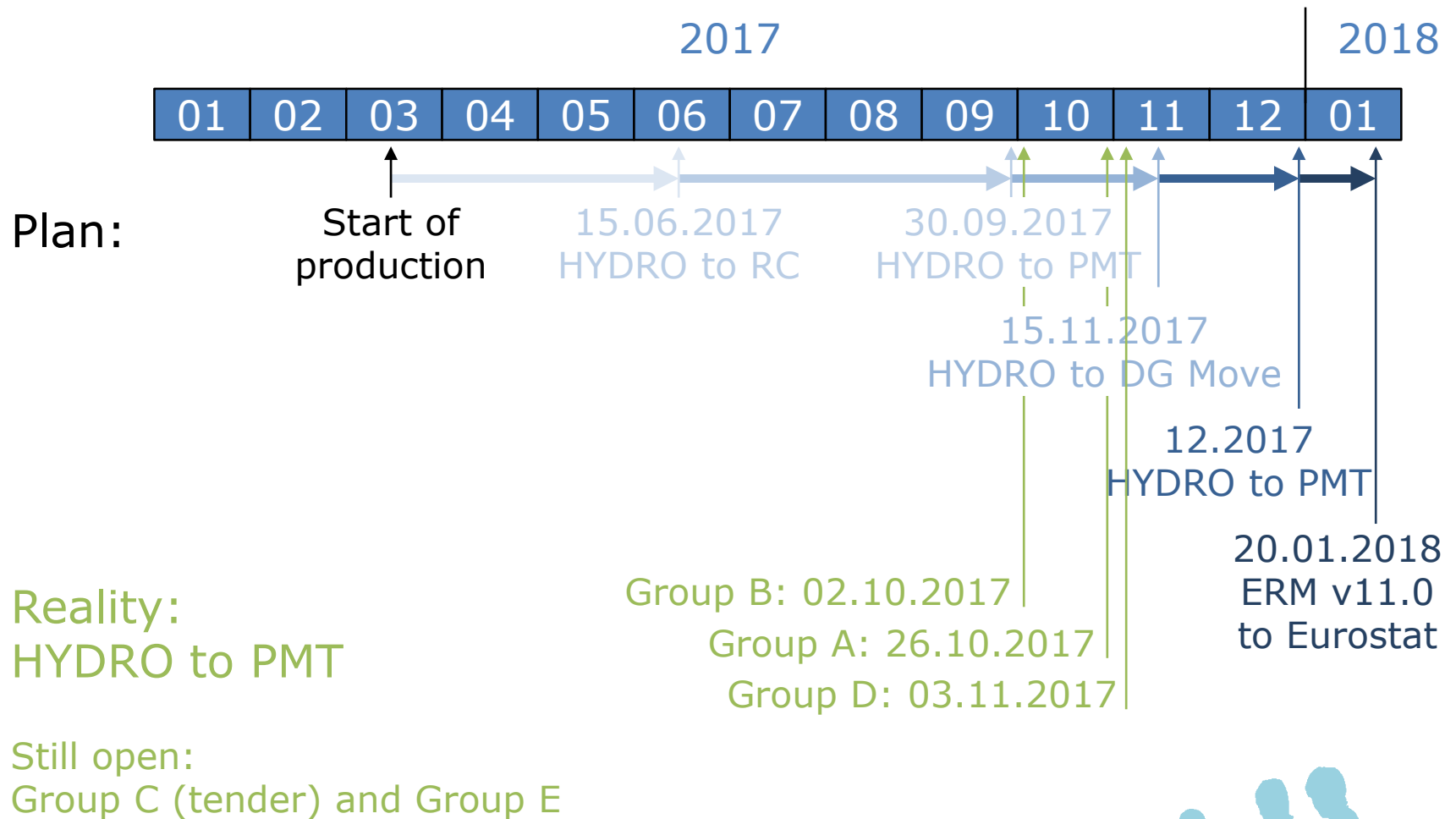


Open issues

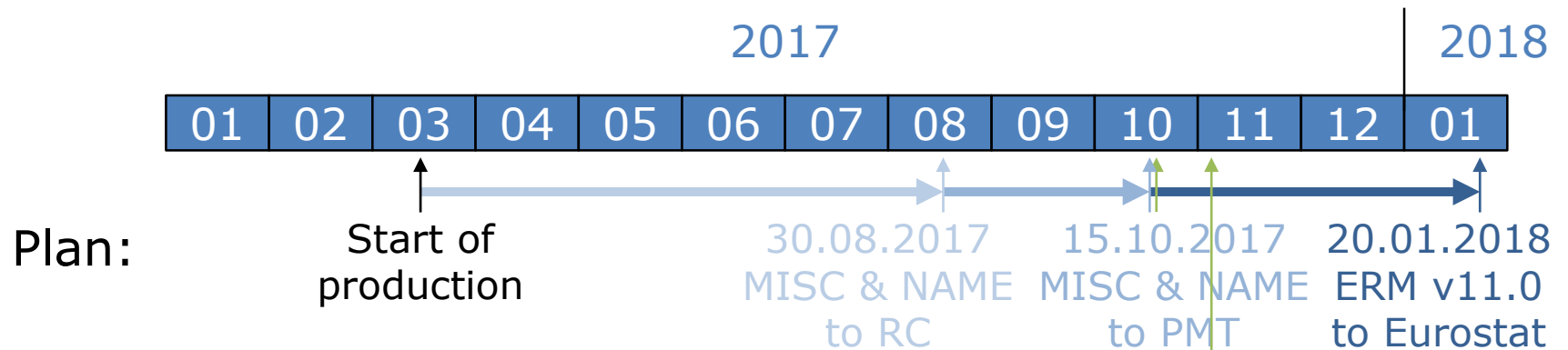
- Reference date:
Changes should be between 01.01.2016 and 01.01.2017 → effective Date
- Areas < 4 ha
- Short segments < 5 m (overlaps, gaps)
- Source of PPL (NMCA or Eurostat) and ARA (NMCA or calculated by PMT)
- Cutbacks
→ result of connecting feature points



Delivery of ERM - HYDRO



Delivery of ERM - MISC and NAME



Plan:

Reality:

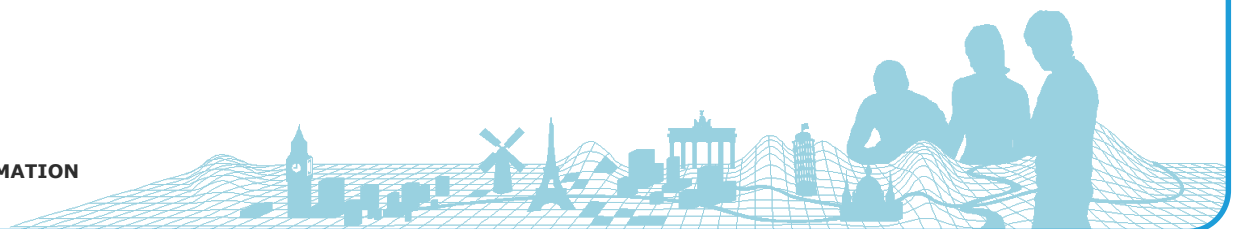
MISC & NAME to PMT

Group B: 19.10.2017

Group A: 03.11.2017

Still open:

Group C (tender), Group D, Group E

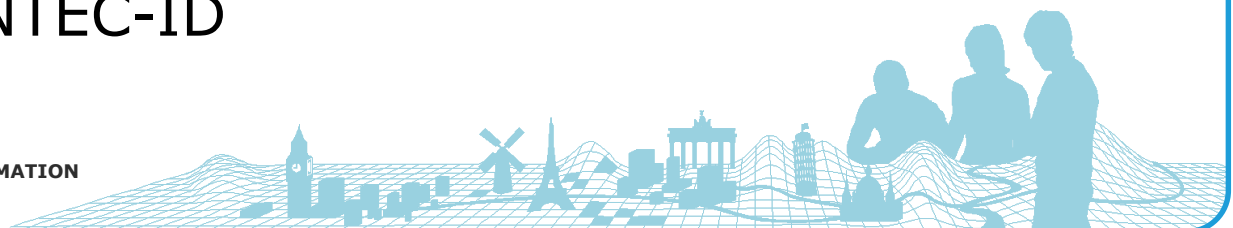


DG Move / TEN-T network

- Trans-European Transport Network (TEN-T):
Implementation and development of a Europe-wide network of roads, railway lines, inland waterways, maritime shipping routes, ports, airports and rail-road terminals
 - The Comprehensive Network
 - The Core Network
- DG MOVE defines the TEN-T policy, monitors and controls the overall programme execution
- Validation by EU Parliament in spring 2017
- Update of ERM transport layers (ports, airports, roads, railways) based on current version in force
→ Delivery to BKG on 16.10.2017 with
TEN and TENTEC-ID



Maintained by DG Mobility and Transport



Tasks till delivery to Eurostat (Jan 2018)

- Regional Coordinators:

- Validation of datasets and metadata / lineage files
- Assembling of groups

Theme HYDRO

→ Groups C and E

Themes MISC and NAME

→ Groups C and D and E

- Production Manager:

- Aggregation of all groups for HYDRO, MISC and NAME
- Validation and finalisation



- DG MOVE

- Update of TEN attributes for HYDRO network



Themes for ERM Production 2018

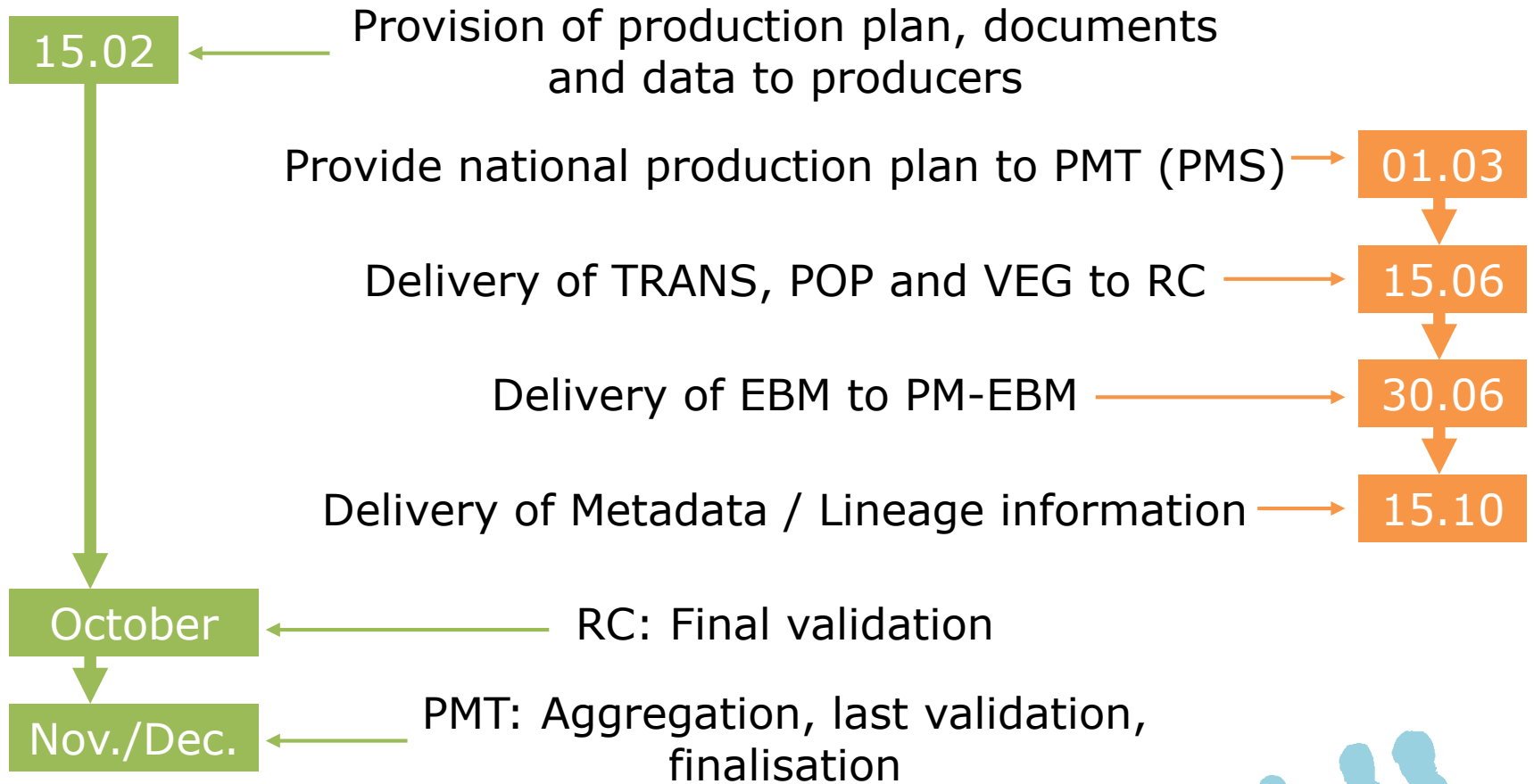
- BND
 - Consistency with EBM update
 - Countries with differences between EBM and ERM: Republic of Moldova, Romania, United Kingdom (?)
- Real update
 - TRANS
 - POP
 - VEG

Update of other themes?

- Will not be validated by RC
- Will not be included in ERM v12



Timetable for Production of EBM and ERM 2018



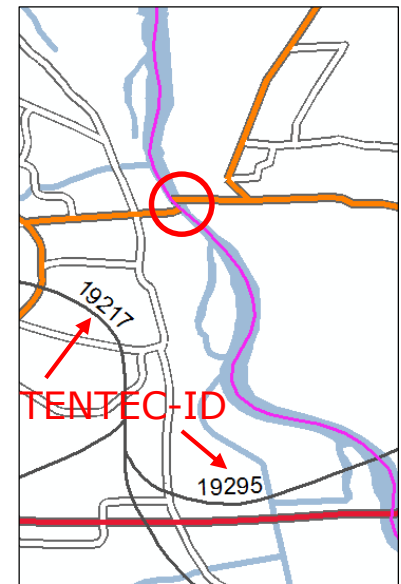
EBM v13

- The production of the next update will be carried out in the usual workflow
- The reference date of EBM v13 is 1.1.2018
- The data model and all documents are kept stable. There are no new requirements.
- NMCAs have to update the following content of the EBM database:
 - Feature class **EBM_A** → basic EBM geometry
 - Table **EBM_NAM** → basic EBM attribution
 - Feature class **ResidenceOfAuthority**
 - Table **EBM_NUTS** → **Keep aware of new regulation NUTS2016**
 - Table **EBM_ISN**
- NMCAs shall deliver only those feature classes or tables, where changes occur
- Plan for new and harmonised lineage files (PMS)



ERM v12

- Revised Technical Guide (Layout, Links, ...) → Please inform Regine Elling / PMT about mistakes / unclear explanations
- Minor changes in data specification and data model for ERM v12 (TENTEC-ID)
- Maintain TEN network (TRANS, HYDRO)!
- ERM Master database with features located on international boundary → Please check edge matching for TRANS
- Plan for new and harmonised lineage files (PMS)



International Boundary

- Responsibility for International Boundary Regional (IB Regional) and connecting feature points (CFP) changed within BKG
- New contact person:
Ramon Zacharias (ebrm@bkg.bund.de)



Thank you for your attention



Contact:

Jürgen Spradau and Regine Elling

Federal Agency for Cartography and Geodesy

Richard-Strauss-Allee 11

60598 Frankfurt am Main / Germany

Email: ebrm@bkg.bund.de

