



State Land Service
Republic of Latvia

Implementation of Restricted Territories Information System and registration of restricted territories in Cadastre IS in Latvia

Alvis Rudzītis

System Analyst of Division of Restricted Territories
The State Land Service of the Republic of Latvia





State Land Service
Republic of Latvia

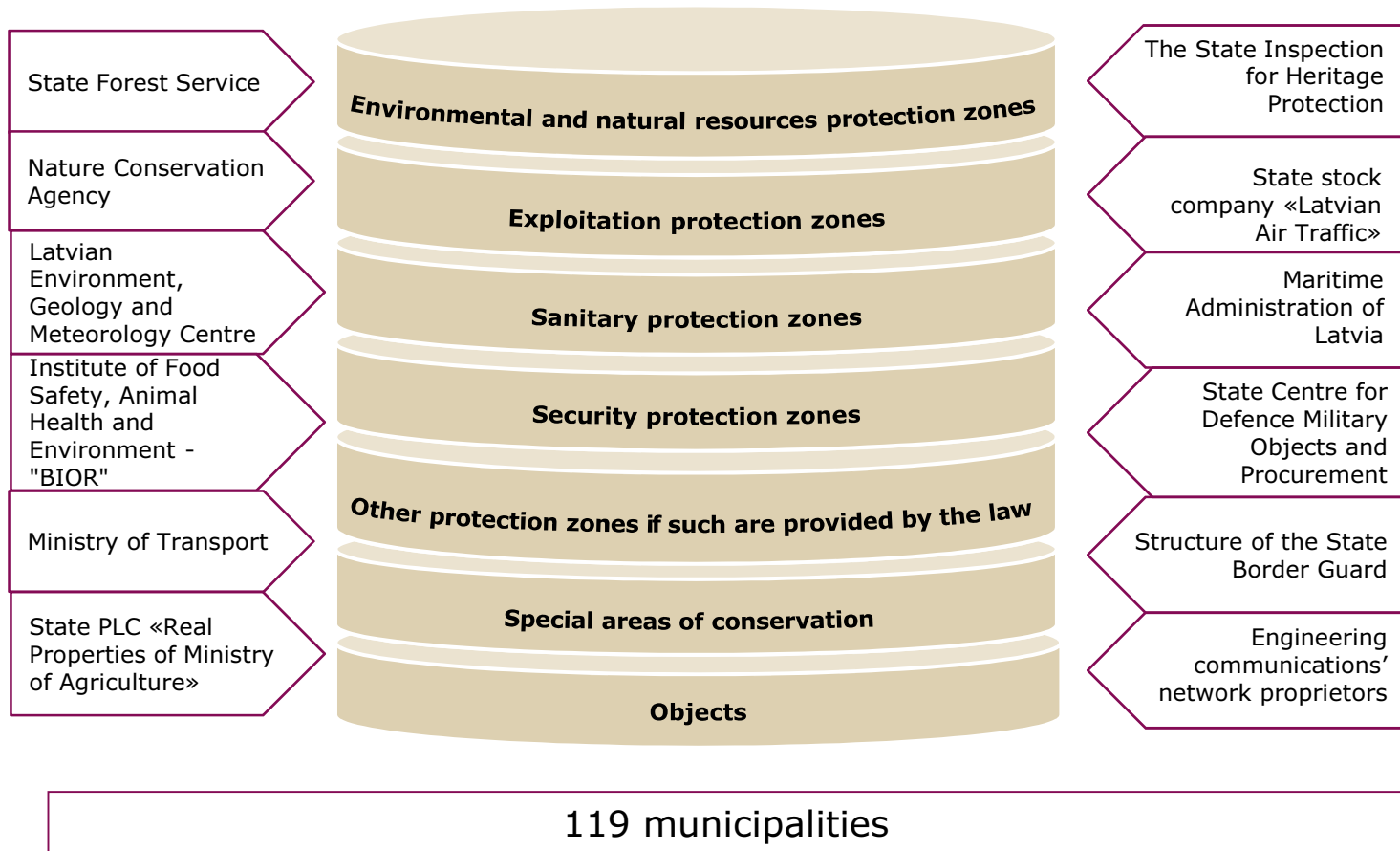
Restricted Territories Information System (RTIS) is State Information System and the goal of this IS is to provide society with actual and publicly available information in one place about restricted territories and objects which have protection zones.





State Land Service
Republic of Latvia

DATA PROVIDERS (1)





State Land Service
Republic of Latvia

DATA PROVIDERS (2)

SMALL

~ 55% of amount
~ 5 % data
Data is not
electronically
available or
provider have
small amount of
data

SOLUTION:
Online WEB
editing

AVERAGE

~ 40% of amount
~ 25% data
Data is stored in
files

SOLUTION:
File transfer
using FTP server

BIG

~ 5% of amount
~70% data
Have their GIS
systems

SOLUTION:
Individually
adapted Data
Transformation
models



State Land Service
Republic of Latvia

DISADVANTAGES AND SOLUTIONS

SMALL

Have to draw data manually when data is changed

SOLUTION:
Trying to change data input from WEB editing to FTP if data amount is growing

AVERAGE

Have to tailor data to fit specification

SOLUTION:
Provide unchanging data structure and try to define data transformation model or use developed RTIS resource file

BIG

Have to keep data structure unchanged

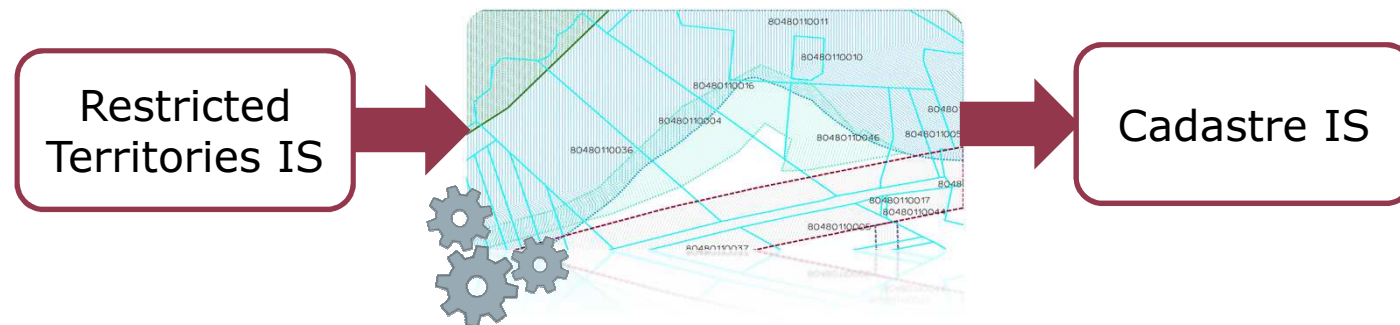
SOLUTION:
Put effort in making data transformation model once and supply with data automatically



State Land Service
Republic of Latvia

Restricted Territories IS – benefits to society

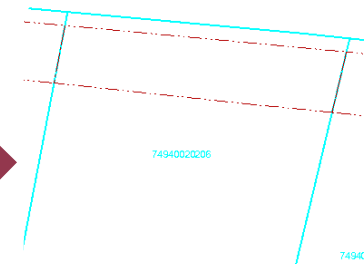
- All information about restricted territories available under unified classification and specification
- Automatic update of restricted territory following changes in regulations
- Actual data on restrictions of real estate in Cadastre IS





State Land Service
Republic of Latvia

Current registration of encumbrances in Cadastre



Sources of protection zones and other encumbered territories

- Spatial plan
- Detailed plan
- Land use planning project
- Municipality decisions etc.

Surveyor

- Collects information
- Field works
- Creates plans of encumbrances

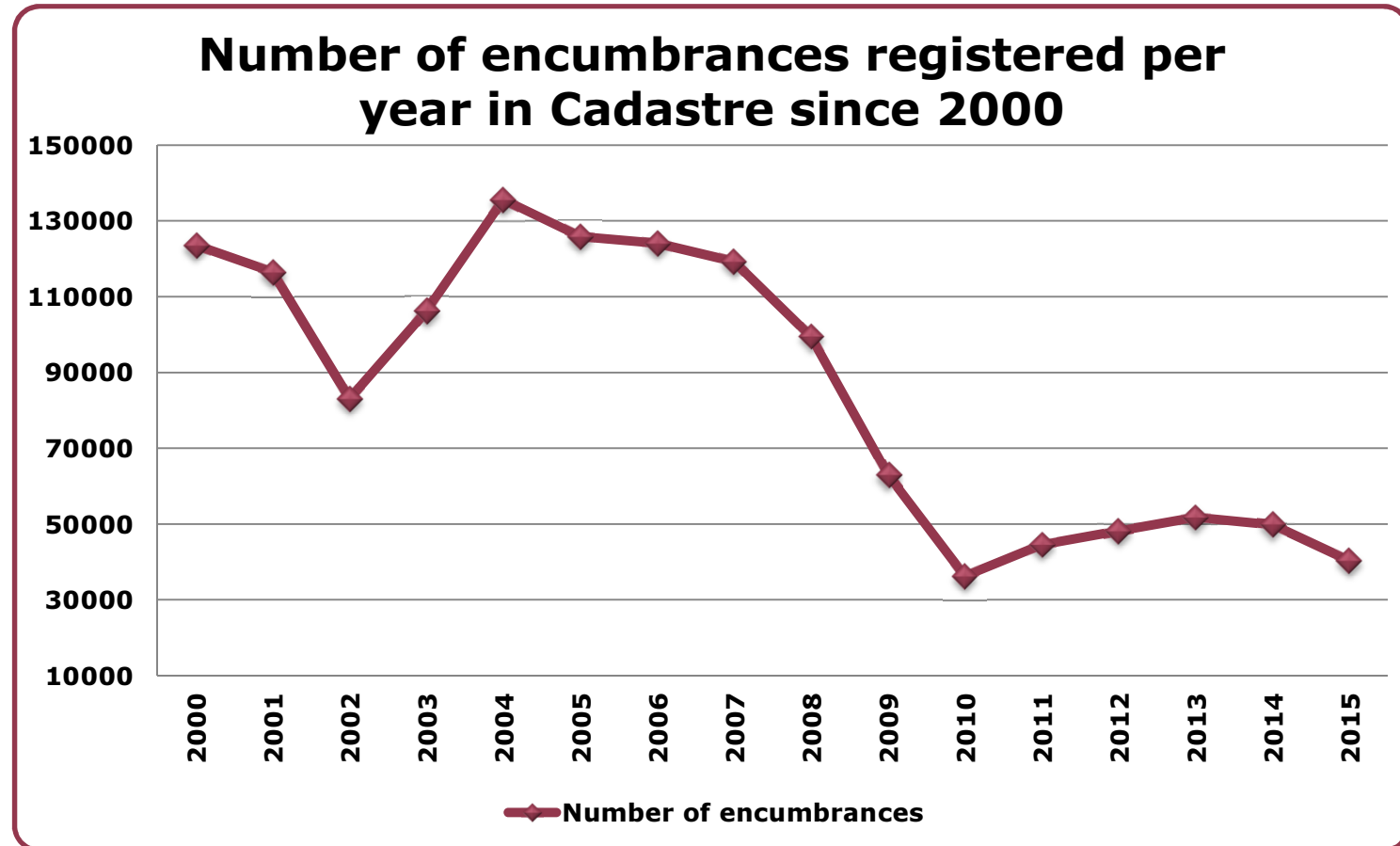
Cadastre Information System

- There are registered all encumbrances from plan in textual data;
- There are depicted only road servitudes in spatial data



State Land Service
Republic of Latvia

Dynamics of encumbrances registration in Cadastre





State Land Service
Republic of Latvia

Legislation now...

...requires that encumbrances will be registered in
Cadastré from Restricted territories IS

National Real Estate Cadastre Law

Restricted Territories Information System Law (*Launch of Restricted Territories IS - 1st of January, 2018*)

Legislation

Cabinet of Ministers Regulations Nr.263 «Regulations on the registration of Cadastre items and updating of the Cadastre data» (*Encumbrances in Cadastre from Restricted Territories IS from Restricted Territories IS will be launched*)

Cabinet of Ministers Regulations Nr.61 «Regulations on Restricted Territories Information System establishment and maintenance and restricted territories and encumbrances classification»



State Land Service
Republic of Latvia

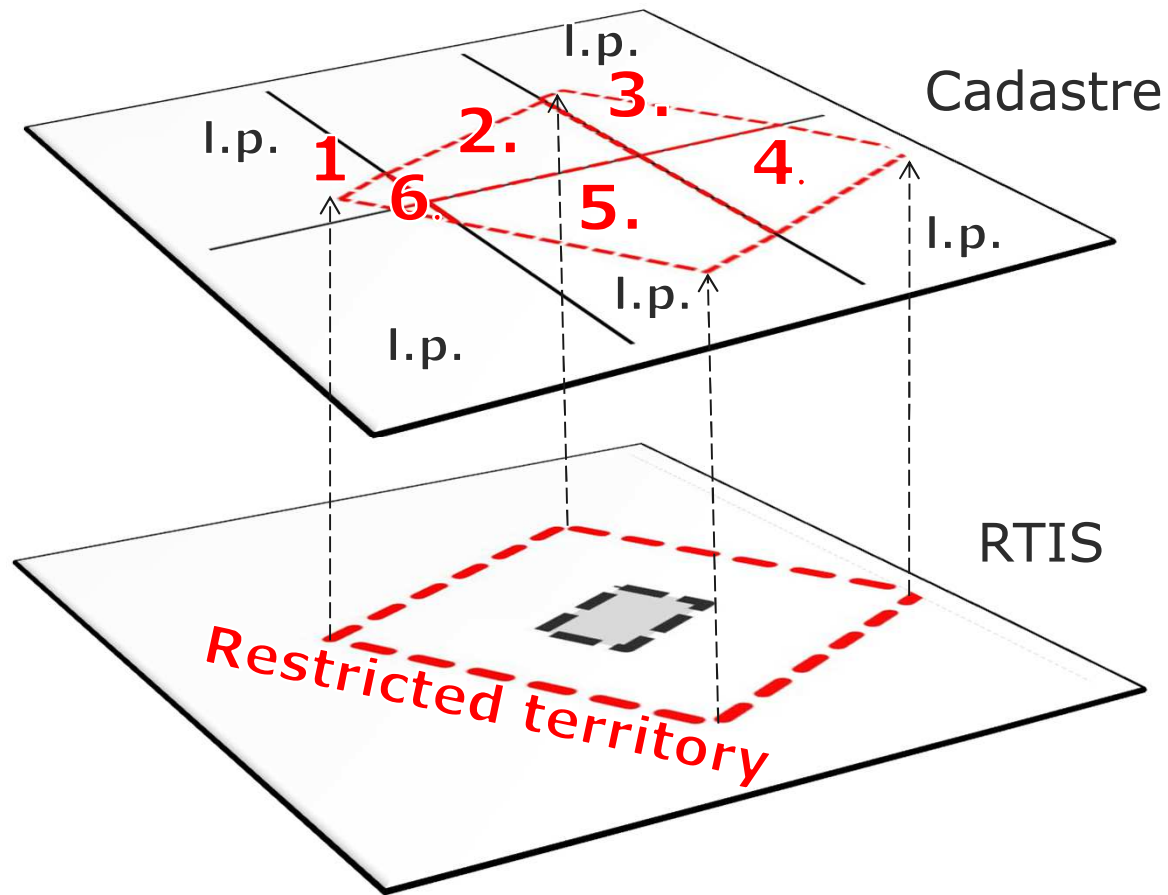
Launch of Restricted Territories IS

Although there are determined that Restricted Territories IS will be launched on the 1st of January 2018 in Latvian legislation, Directive 2014/61/ES of European Parliament requires that Restricted territories IS data must be available with minimum of infrastructure objects from the **1st of January, 2017**.



State Land Service
Republic of Latvia

Intersection of Restricted Territories IS data and cadastral map

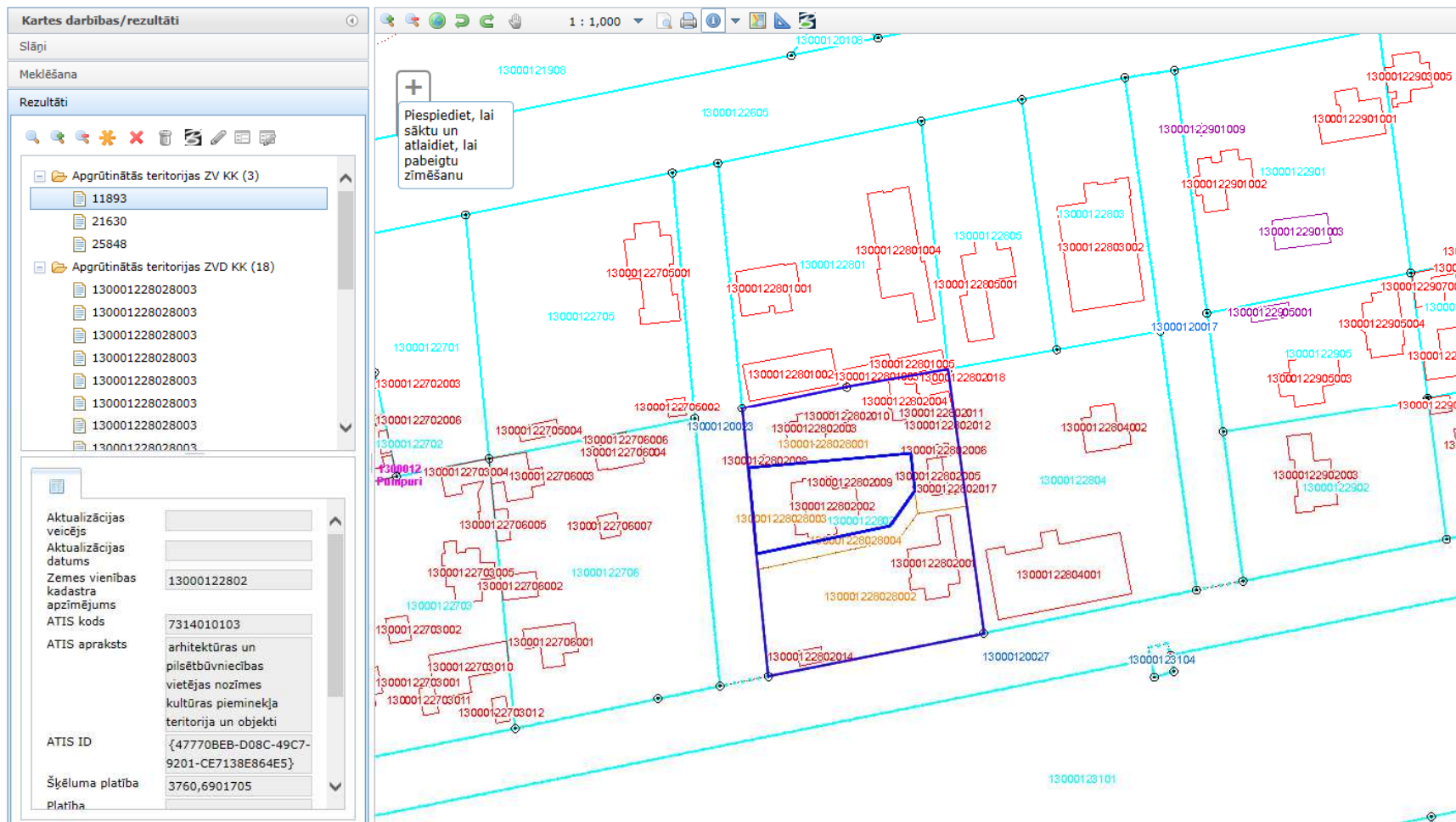


**Result after
intersection
=
Encumbrance
in Cadastre**



State Land Service
Republic of Latvia

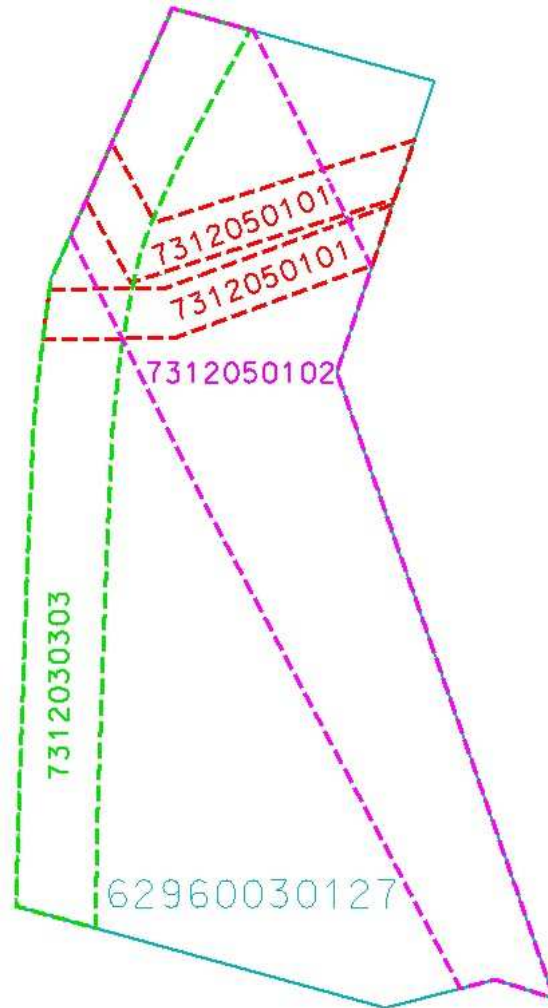
Intersection result



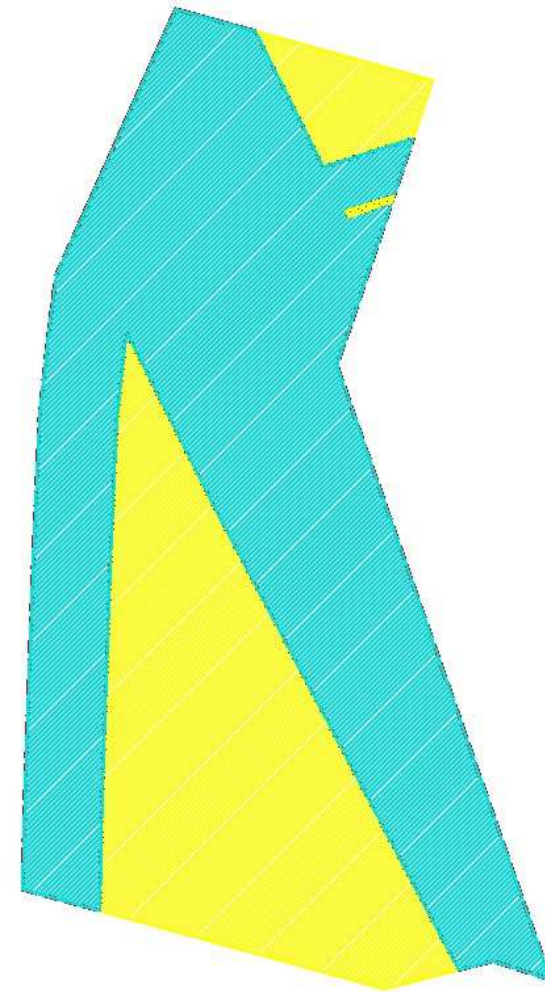


State Land Service
Republic of Latvia

Cadastral map after intersection



Land parcel from cadastral map where are depicted encumbrances from intersected data of RTIS.



Land parcel from cadastral map where are shown depicted encumbered and unencumbered areas.



State Land Service
Republic of Latvia

Future vision for frequency of data registration and updating in Cadastre

Mass update with encumbrances from intersection with Restricted Territories IS data twice a year:

- 1st of May,
- 1st of December.

If information in Cadastre is changed, also encumbrances from intersection with Restricted Territories IS data is updated.

Since the new registration of encumbrances affect the Cadastral Value of Real Property, it is necessary to change mass valuation model.



State Land Service
Republic of Latvia

Future (1)

E-services

Data browsing **without** contract

- a) Read-only spatial data of Restricted Territories IS
- b) Thematic map browsing

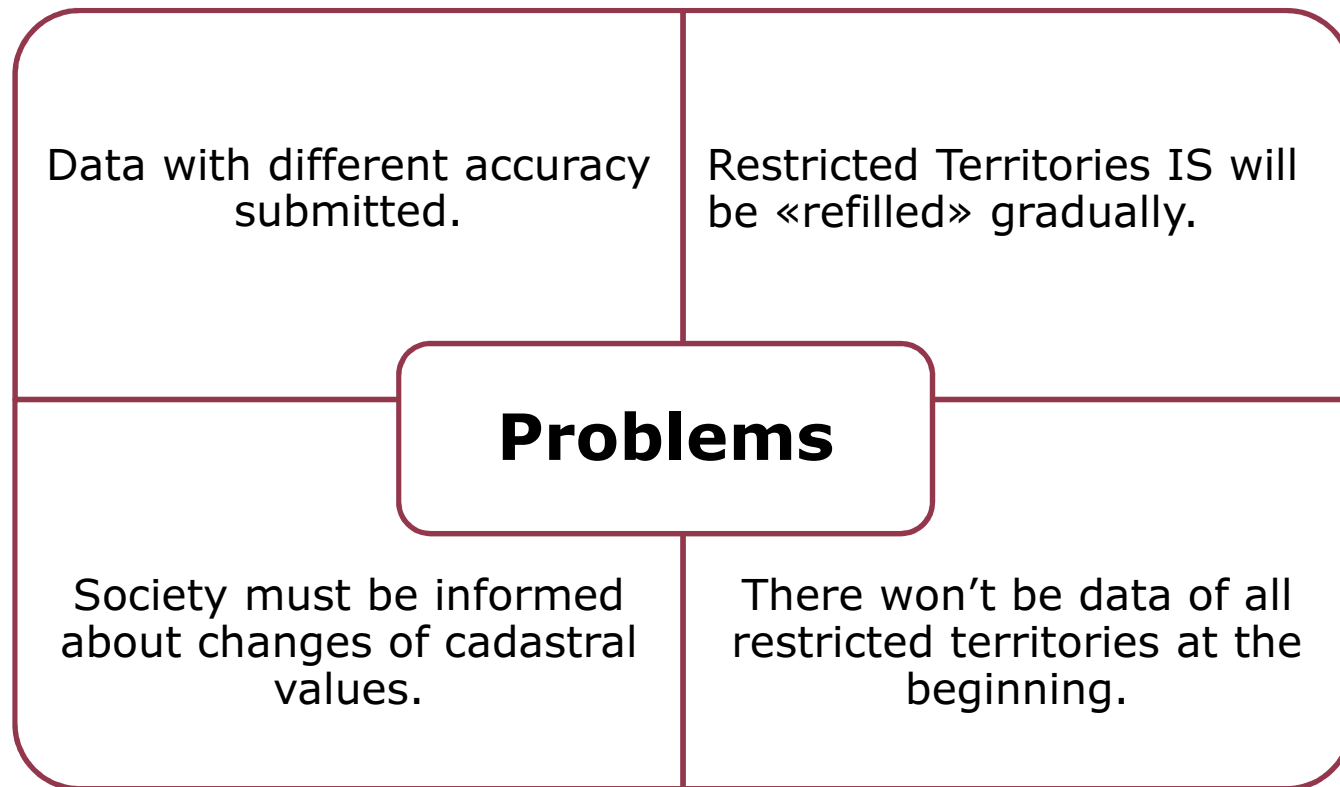
Data browsing **with** contract

- a) Download of restricted territories
- b) Request for restricted territories (without objects)
- c) Data provider's objects with restricted territories



State Land Service
Republic of Latvia

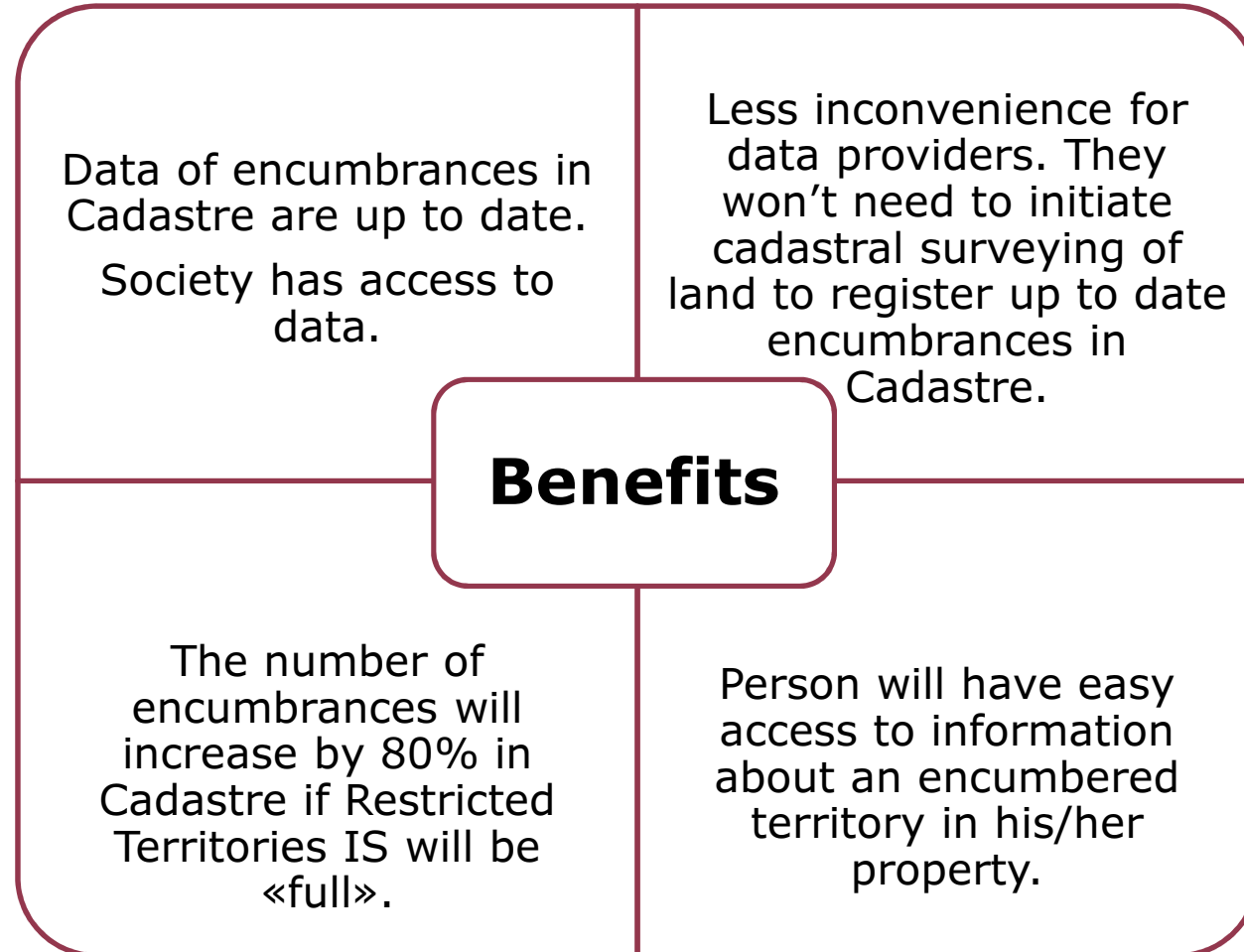
Future (2)





State Land Service
Republic of Latvia

Future (3)





State Land Service
Republic of Latvia

Thanks for attention!

