

# Italy

## Italy updates hydrography thematic layer as part of INSPIRE implementation

Revising its hydrography layer according to new technical specifications is enabling the Italian Military Geographic Institute (IMGI) to comply with the INSPIRE Directive.

With the completion of the work in 2018, IMGI has delivered data that meets the latest information requirements and the new technical rules for the 1:25 000 scale Italian geographical databases. The theme was reviewed semi-automatically by linking all available and useful data, and then comparing the results with high-resolution orthophotos collected between 2014 and 2016 (example of workflow in Fig. 1).

As the data was harmonised with a level of detail consistent with the scale target (e.g. Molise region's watercourses in Fig. 2), the layer for hydrography is homogeneous and continuous throughout the whole national territory. The layer is made of 14 selected features that, according to specific criteria of collection, describe the basic hydrography of the Italian territory at a level of detail equivalent to 1:25 000 scale.

The revised layer is now part of the GeoDB together with the other thematic layers.

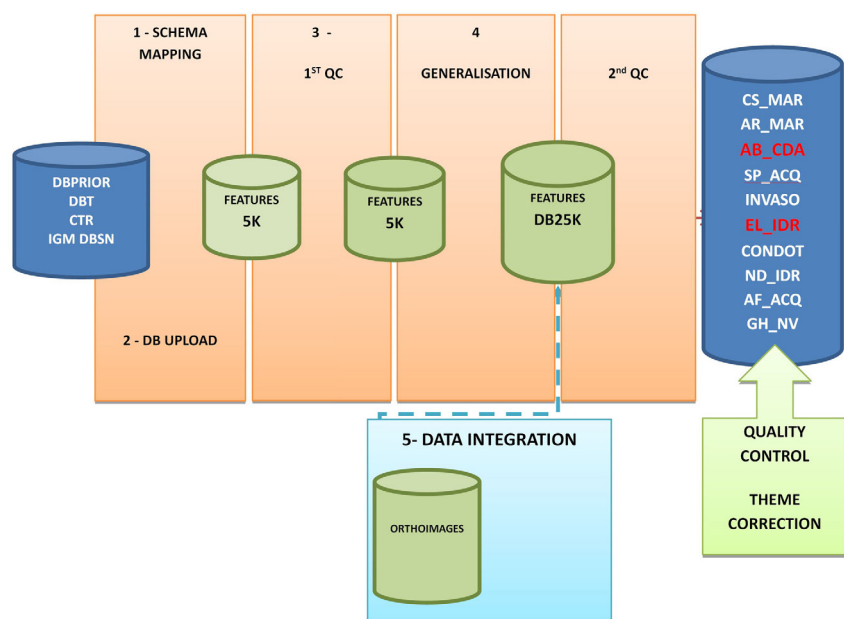


Fig. 1 – Example of workflow

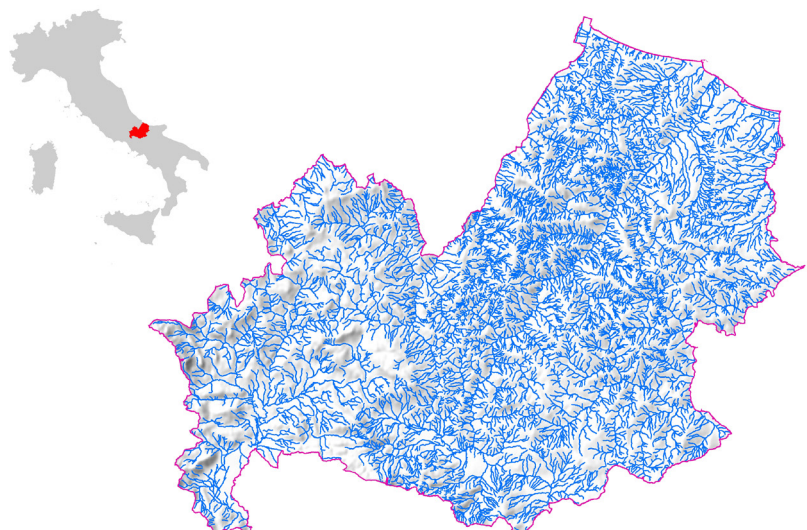


Fig. 2 – Molise region's watercourses